



Complete Streets Technical Assistance Program

Welcome to: Bradley Beach Walkable Community Workshop Follow-Up September 15, 2020

Housekeeping Notes:

-  Mute your microphone/telephone
 -  Use the chat for assistance with technical problems
- This presentation will be recorded

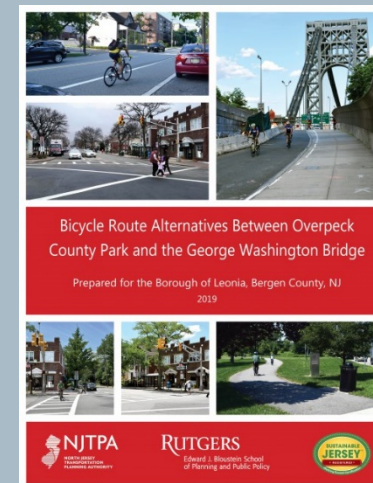
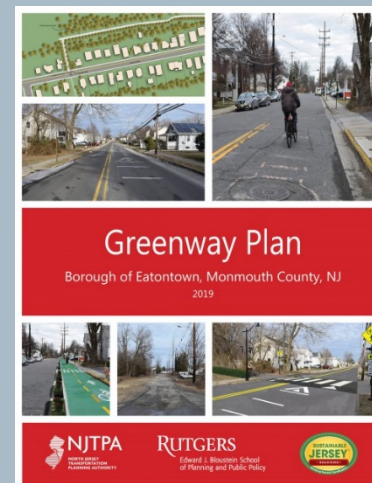
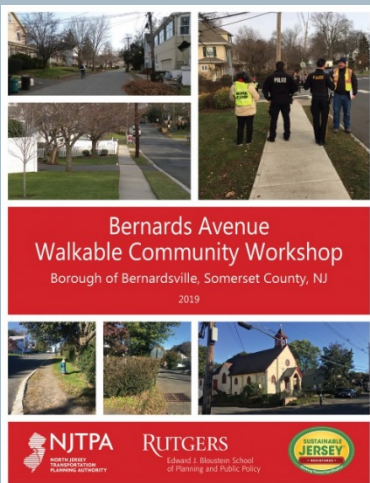
Agenda

- Background & Introductions
- Overview of the Walkable Community Workshop
- Discussion of Recommendations
- Next Steps



Background & Introductions

- NJTPA Complete Streets Technical Assistance Program
- 9 communities in 2019
- 8 communities in 2020



Introductions

- Your name and affiliation
- How long have you lived in Bradley Beach?
- How often do you walk around this area of Bradley Beach?

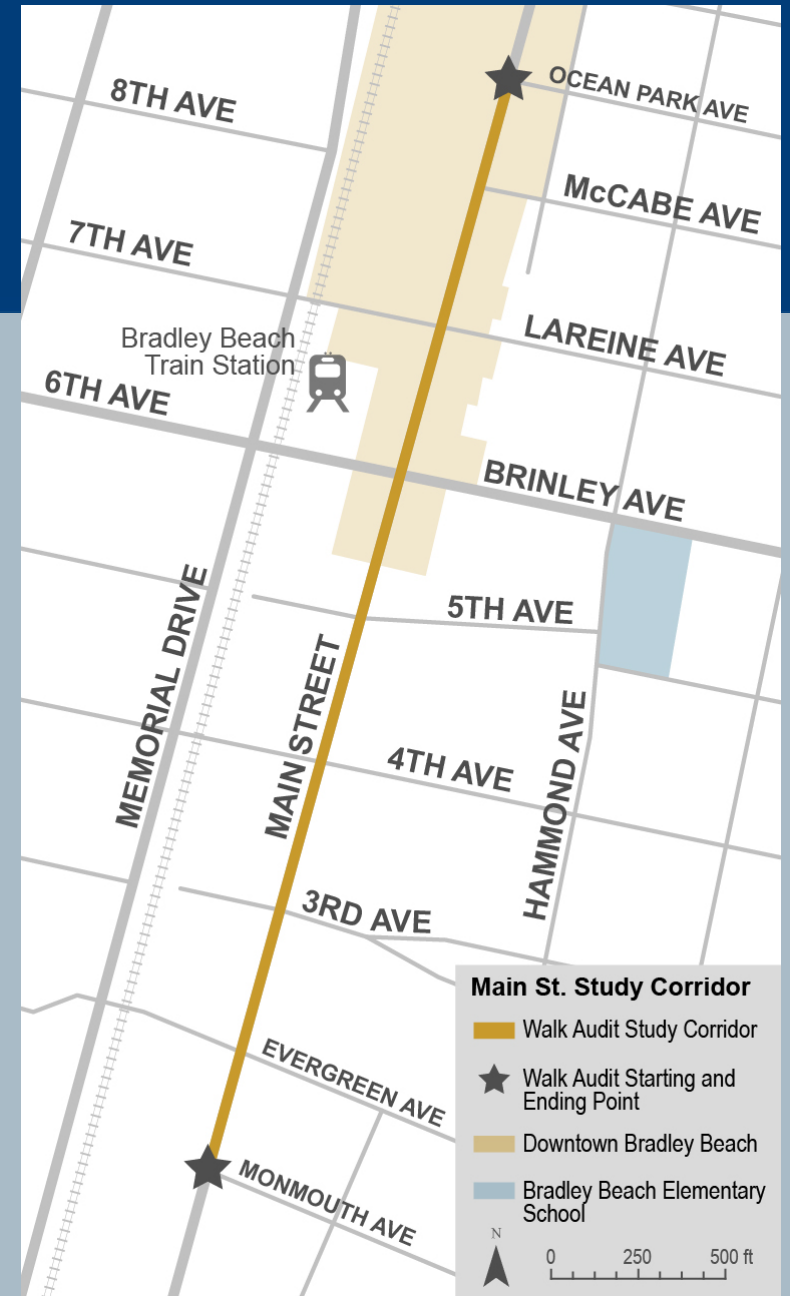
Example:

Aashna Jain, VTC. Does not live in BB and does not walk along Main Street often.



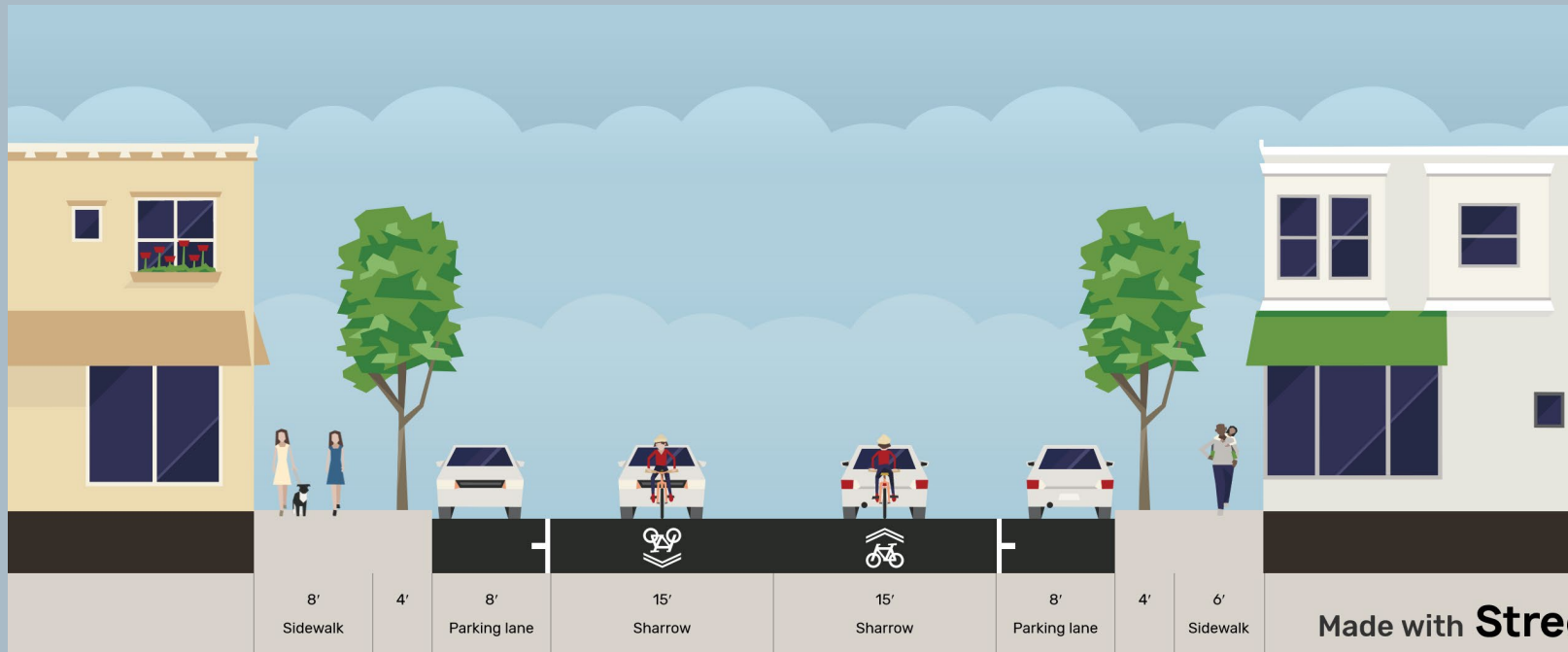
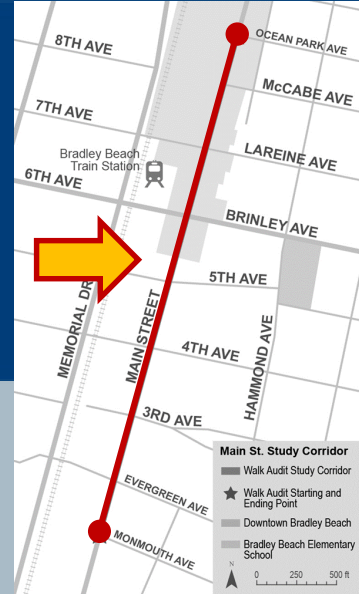
The Walk Audit

- Conducted virtually in July
- Study corridor
- Feedback collected
 - During audit
 - Via audit form and email

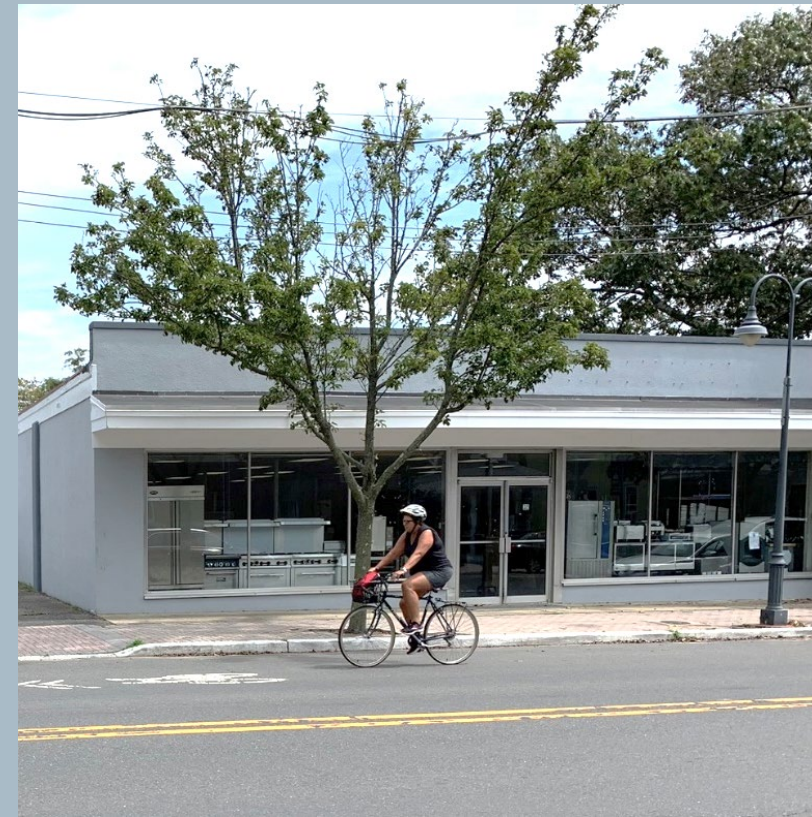


Recommendation

Incorporate Bicycle Infrastructure/Facilities

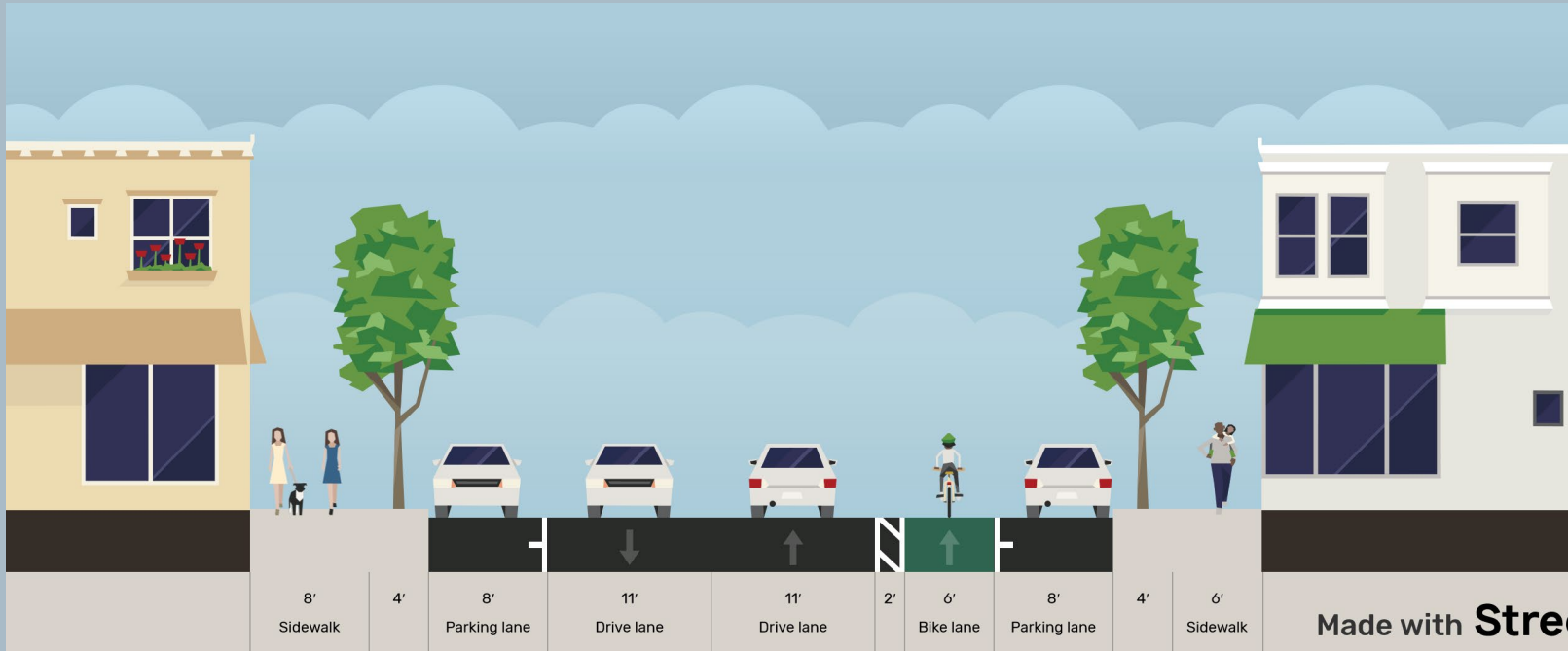


Existing Design

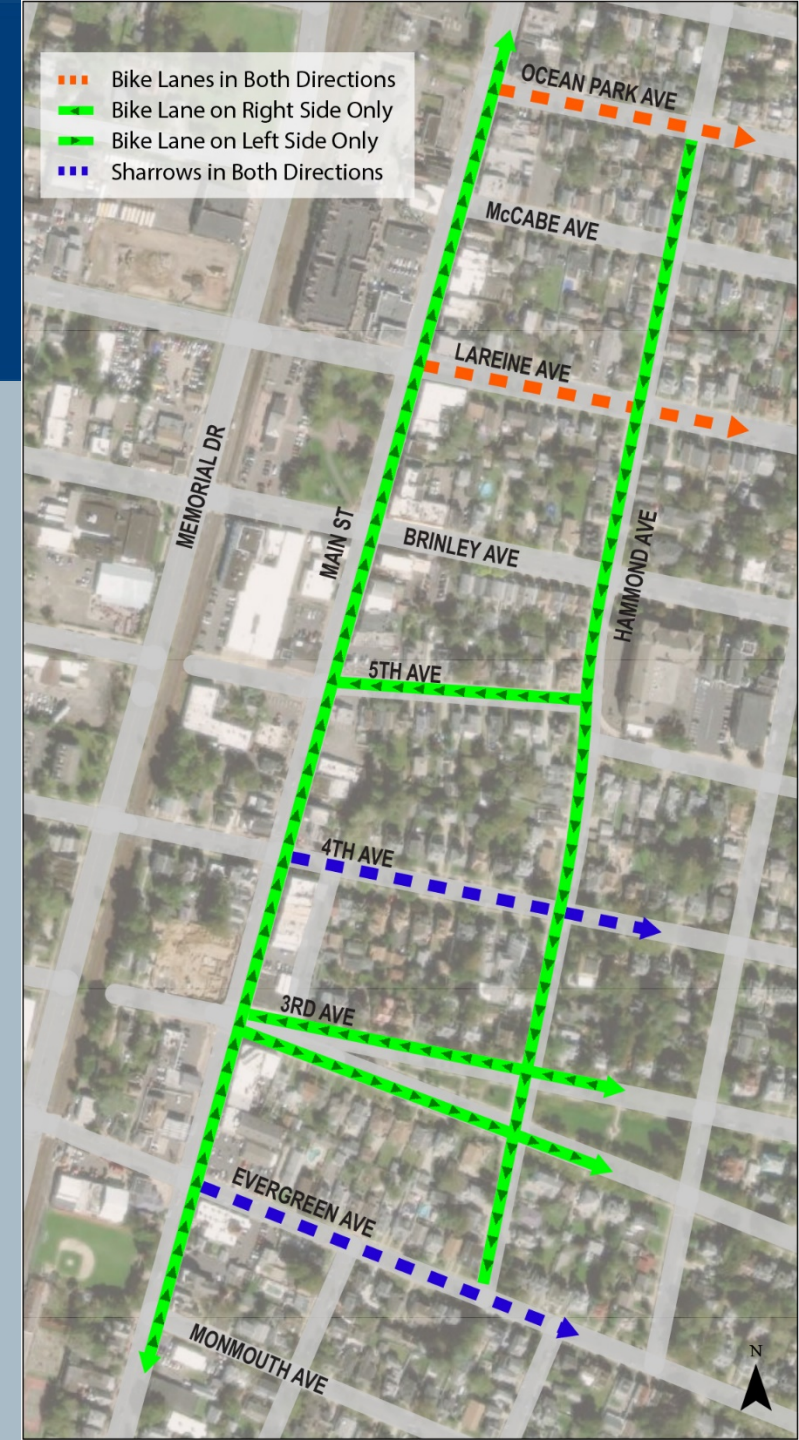


Recommendation

Incorporate Bicycle Infrastructure/Facilities

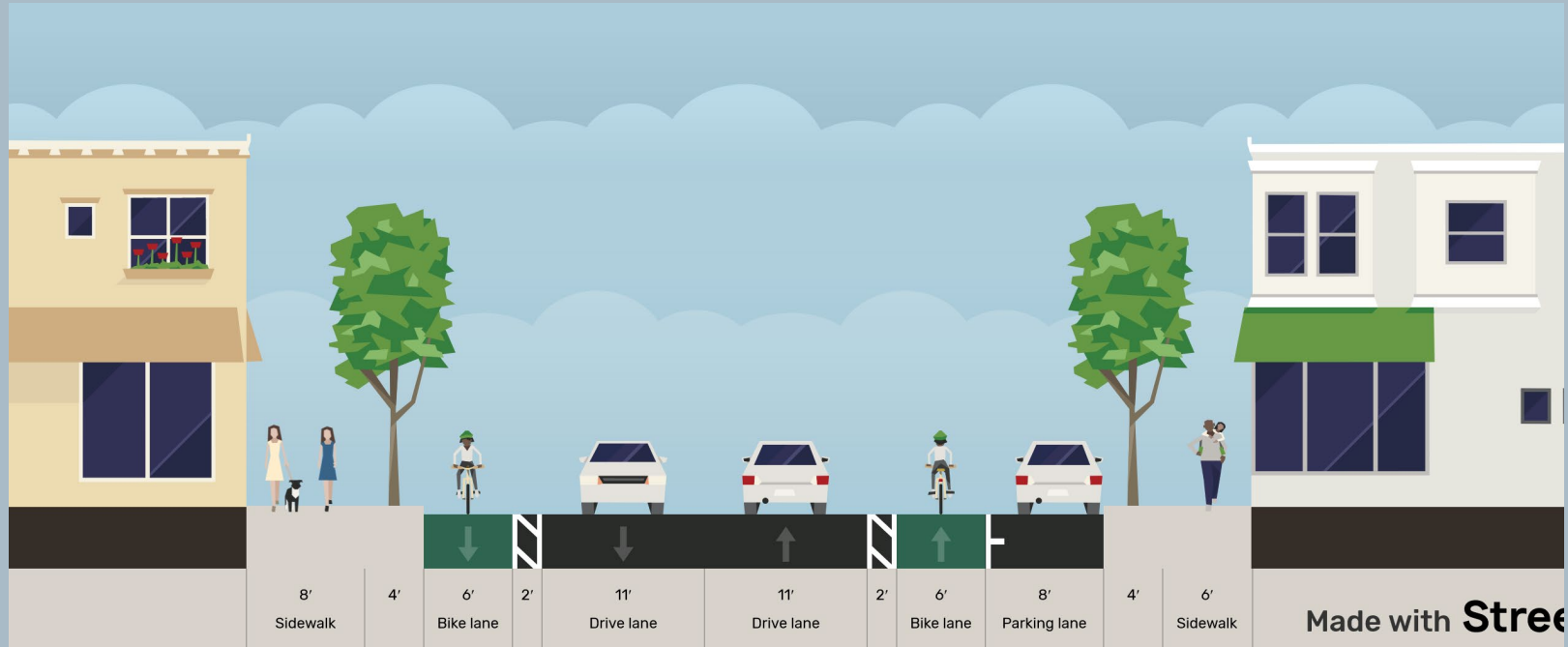


Proposed Design - Alternative I
(Bike Lane on One Side Only)



Recommendation

Incorporate Bicycle Infrastructure/Facilities

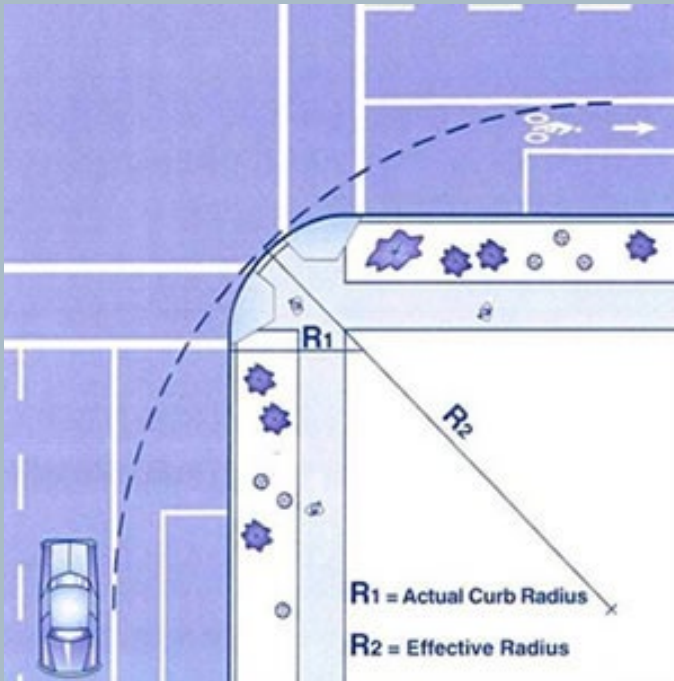


Proposed Design - Alternative II
(Bike Lane on Both Sides)

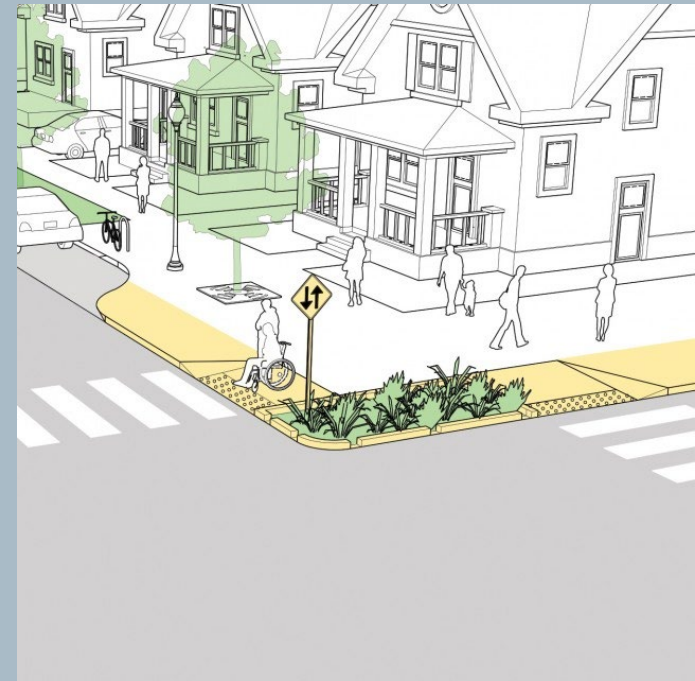


Detailed Recommendations

- Standard design for Curb Extensions, adding greenery and other amenities to the pedestrian realm.



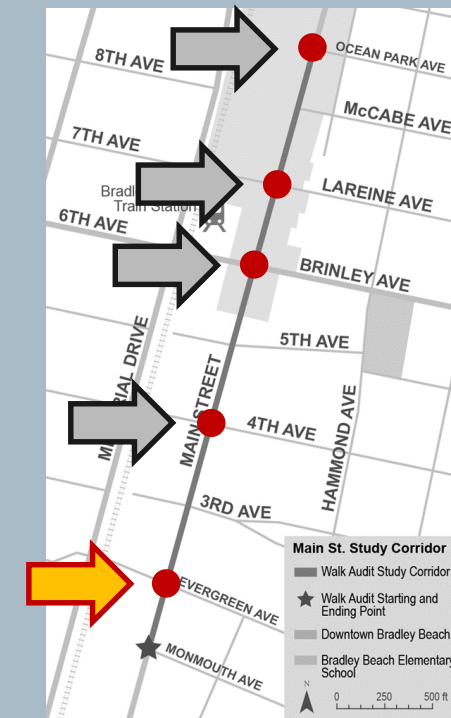
PBIC Image Library



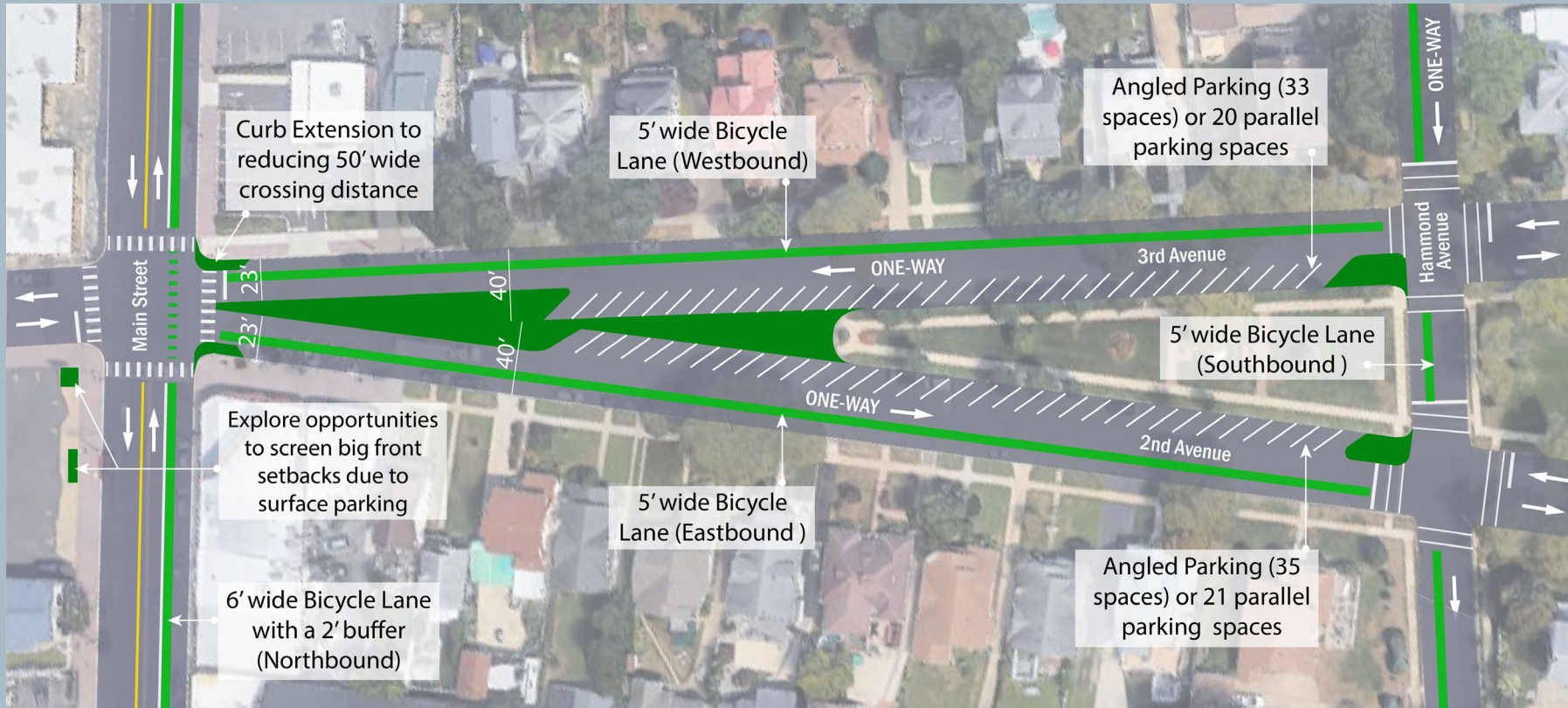
Detailed Recommendations

Evergreen Avenue

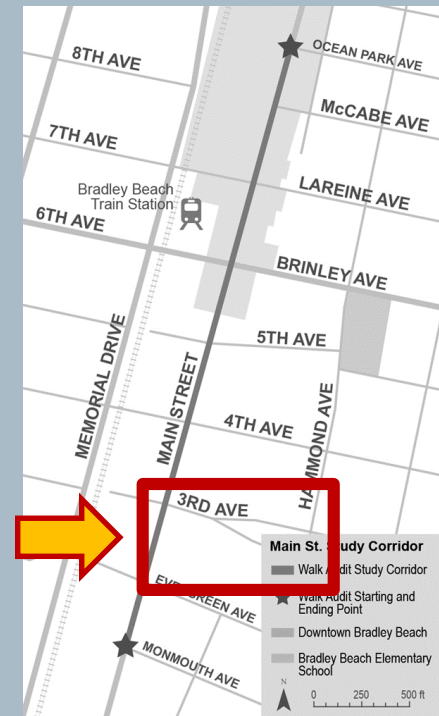
- Ladder crosswalks
- ADA compliant curb ramps and truncated domes
- Adjust signal timing to fixed timer, if push-button operated
- Consider curb extensions
- Provide adequate pedestrian-scale lighting



Detailed Recommendations

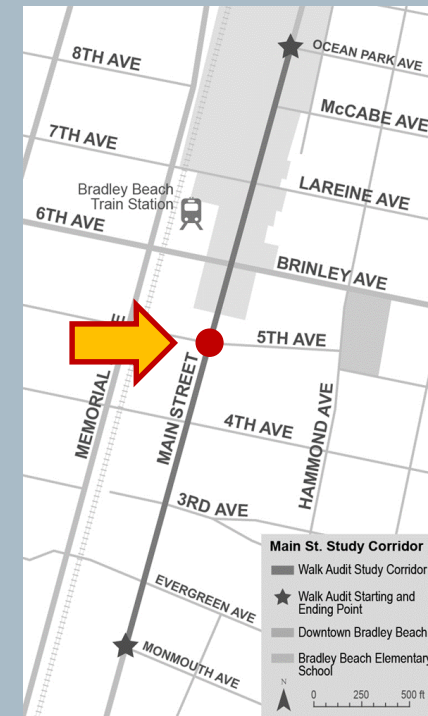
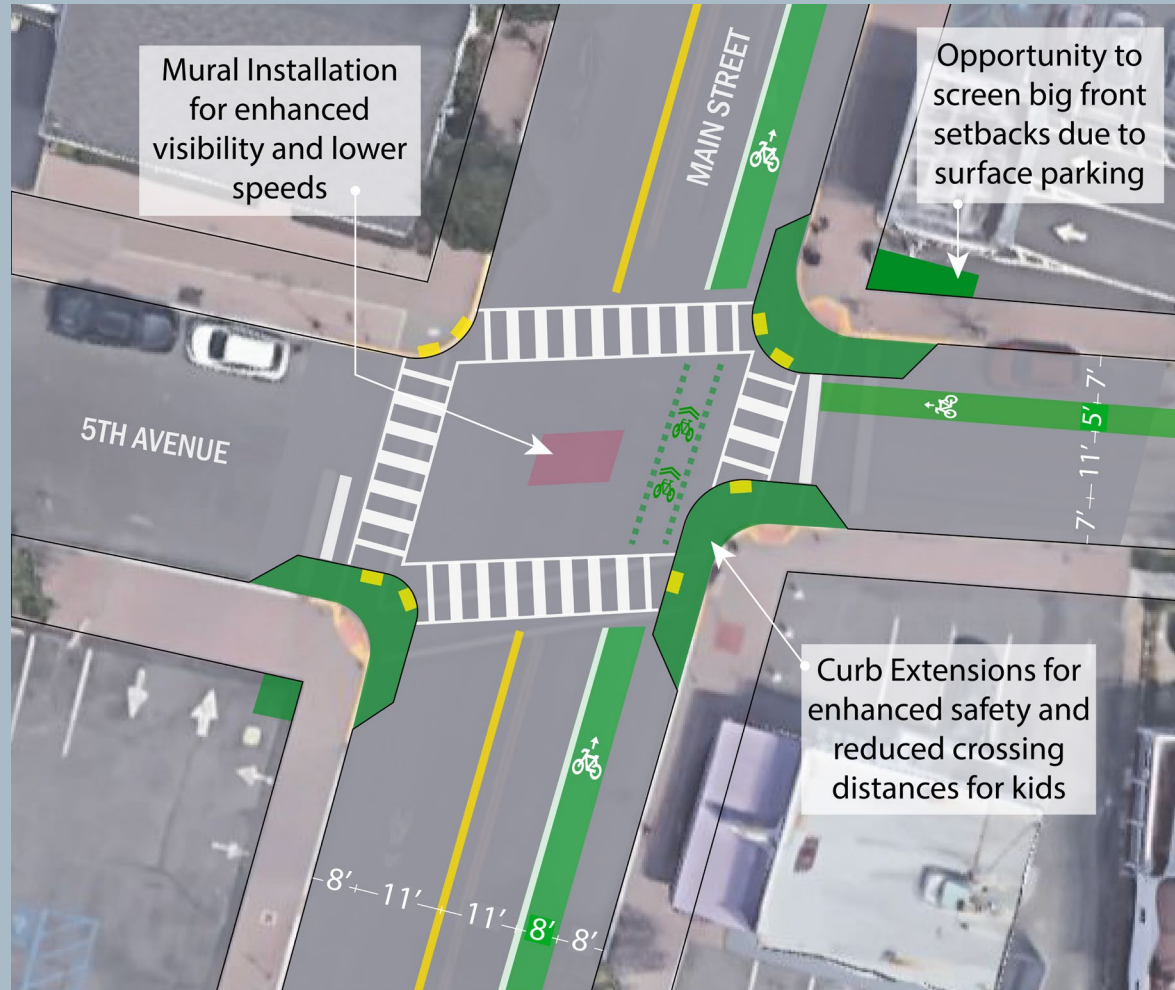


Second/Third Avenue



Detailed Recommendations

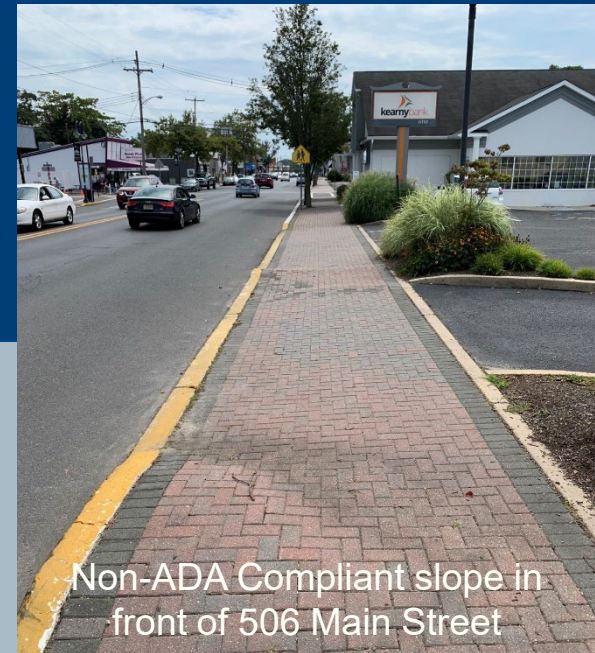
Fifth Avenue



Recommendation

Provide High Quality Pedestrian Infrastructure

- Ladder Crosswalks at ALL intersections
- ADA Compliant Crosswalk Ramps and Truncated Domes
- Level Sidewalk Pavement Condition



Recommendation

Provide High Quality Pedestrian Infrastructure

- Well-maintained Trees and Tree Wells



Planting Bed Design



Tree Placement and Tree Well Design in Downtown Somerville



Tree Grate

Recommendation

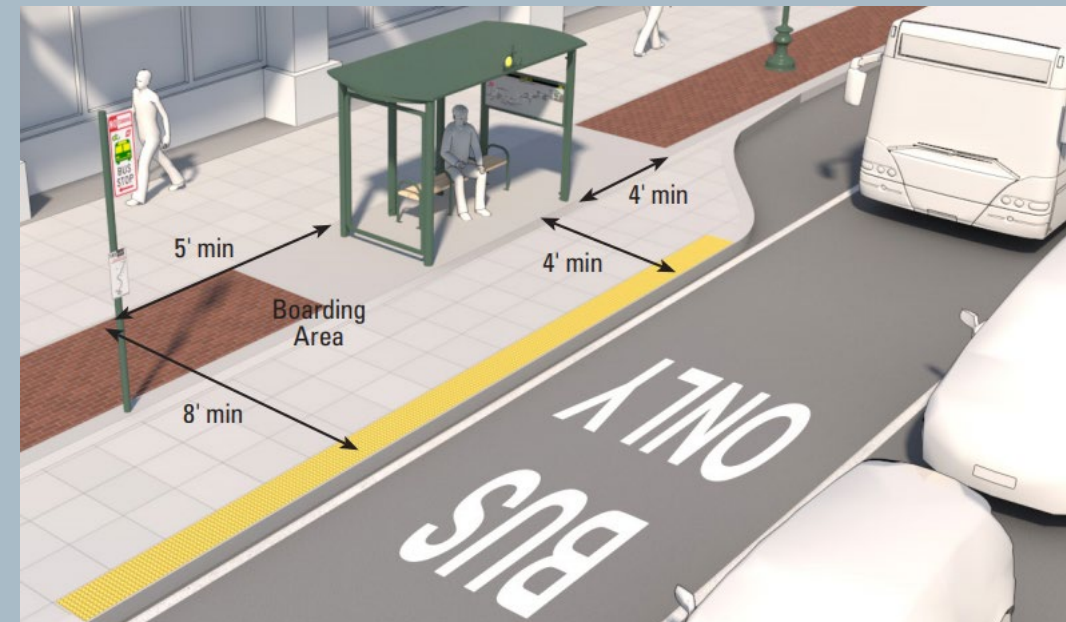
Provide High Quality Pedestrian Infrastructure



Recommendation

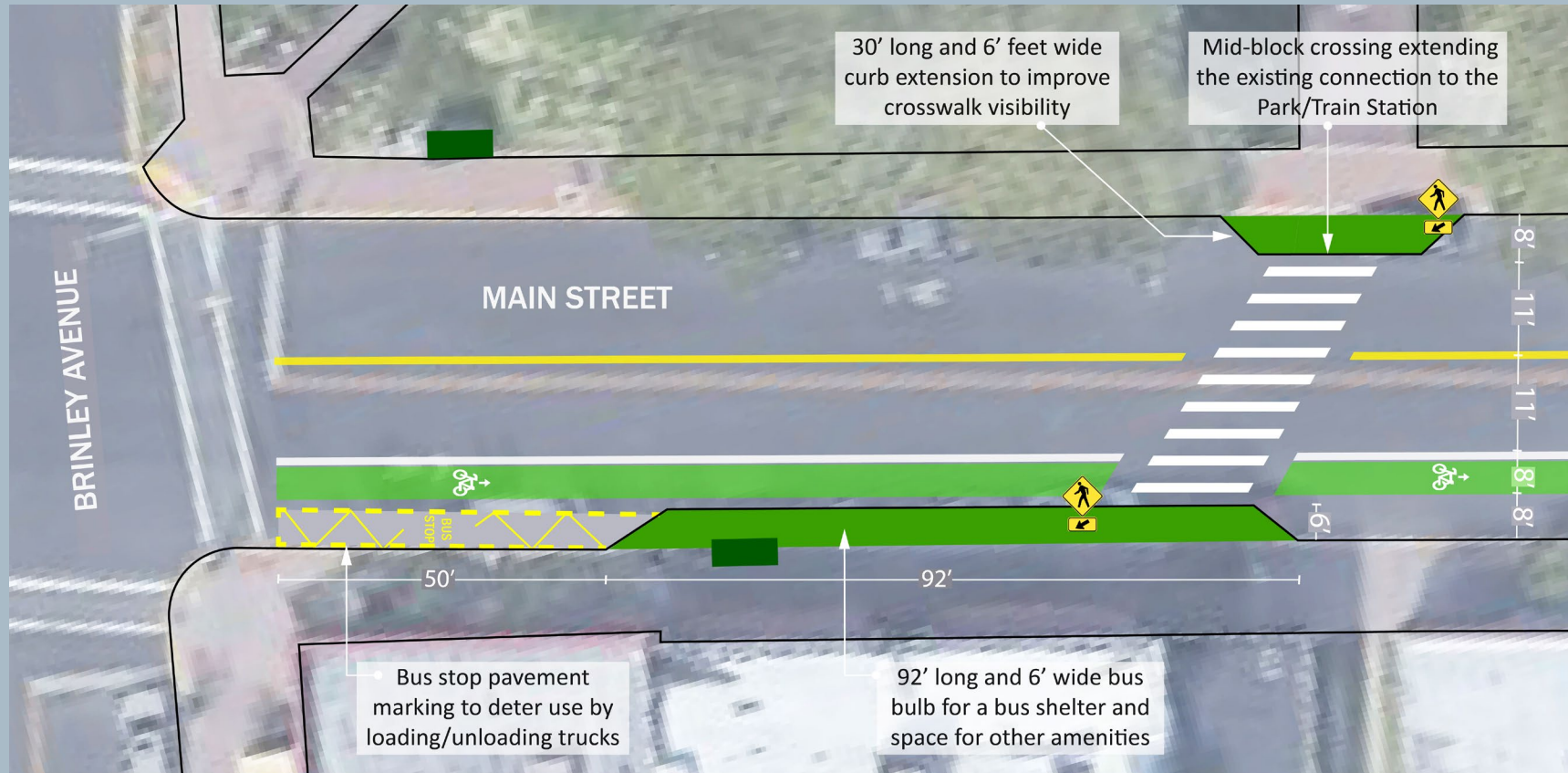
Provide High Quality Pedestrian Infrastructure

- Bus Shelters, and other related amenities such as lighting, transit/wayfinding information, and bike parking



Recommendation

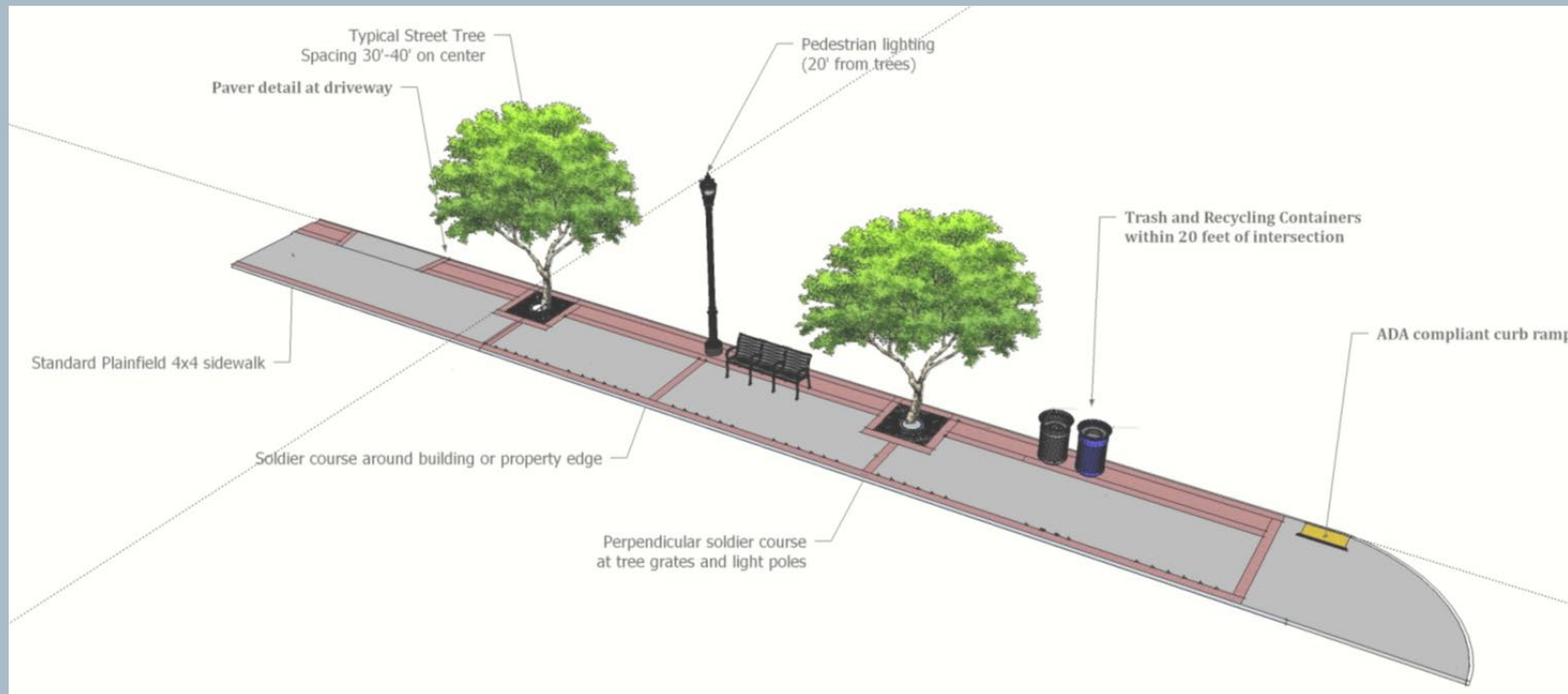
Provide High Quality Pedestrian Infrastructure



Recommendation

Provide High Quality Pedestrian Infrastructure

- Standard layouts optimizing the use of the furnishings zone for adequate lighting, seating, bike parking, and trash cans.



Recommendation

Envision A Unified Look And Character

- Consistent and coordinated development of street elements – street lights, trees, furniture, signage, and amenities.





Recommendation

Envision A Unified Look And Character

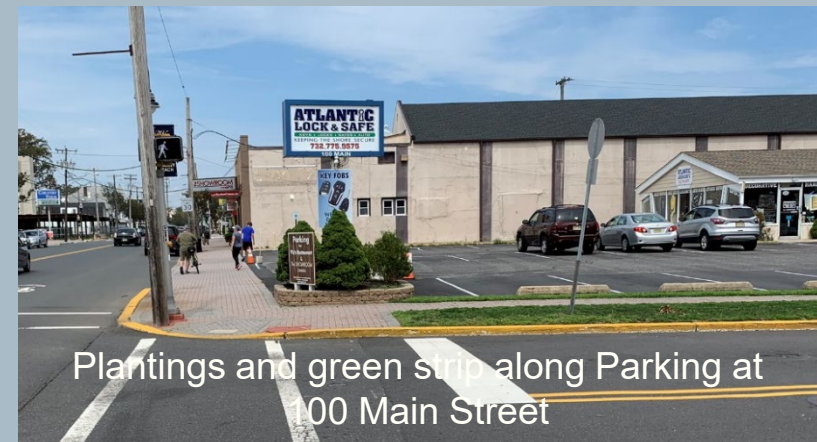
- Creative business signage designs and ideas



Recommendation

Envision A Unified Look And Character

- Screen big front surface parking lots using landscaping and green elements.



Recommendation

Envision A Unified Look And Character

- Opportunities to incorporate art to create a unique pedestrian experience.



Thank you!

Send additional comments,
suggestions to:
heaslya@tcnj.edu

Comments are due by
September 22, 2020

