



Make Your Town EV Friendly

New Statewide Model EV Ordinance, New
Sustainable Jersey Actions, New Funding
Webinar

December 7, 2021





Presenters (in speaking order)

Cathleen Lewis

E Mobility Program Manager, New Jersey Board of Public Utilities

Building an EV Future in New Jersey

Maria Connolly

Principal Planner, New Jersey Department of Community Affairs

DCA Statewide Model Municipal EV Ordinance

Anne Heasly

Program Manager for Policy and Planning, Sustainable Jersey

Sustainable Jersey EV Resources

David Kois

Sustainability Director, Deputy Zoning Official, Hillsborough, NJ

President, New Jersey Association of Planning and Zoning Administrators

Permitting of EV Infrastructure



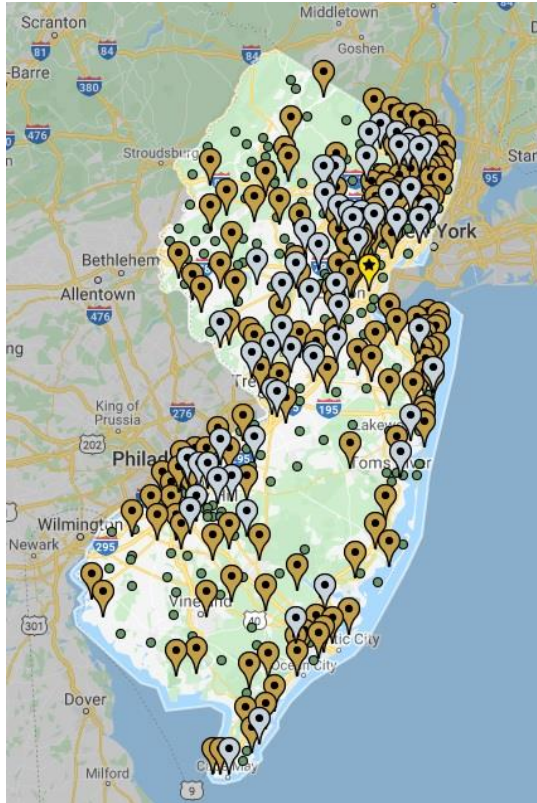
What is Sustainable Jersey?

- **Certification program** for municipalities and schools
- **Tools, resources, and guidance** to help municipalities and schools become more sustainable
- **Grants and funding** for municipalities and schools
- **Regional Hubs**

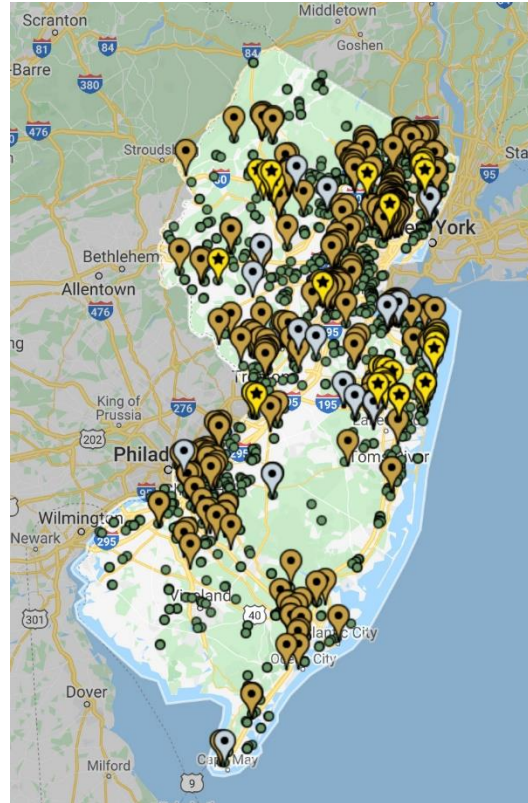




Program Participants



Municipal Program



Schools Program

Municipal Program

- 460 (81%) participating
- 219 Certified
 - 155 Bronze
 - 64 Silver

Schools Program

- 374 (54%) of school districts
- 1025 schools participating
- 335 schools certified
 - 292 Bronze
 - 43 Silver



Municipal Energy Actions

	Energy Efficiency	Renewable Energy	Alternative Fuel Vehicles
Municipal Operations	<ul style="list-style-type: none"> • Energy Efficiency for Municipal Facilities • Energy Tracking and Management 	<ul style="list-style-type: none"> • On-Site Geothermal System • On-Site Solar System +10 pt storage/resilience + 5 pt solar thermal • On-Site Wind System • Buy Renewable Energy 	<ul style="list-style-type: none"> • Fleet Inventory • Purchase Alternative Fuel Vehicles • Meet Green Fleet Targets
Community Energy Use	<ul style="list-style-type: none"> • Energy Assistance Outreach • Commercial Energy Efficiency Outreach • Residential Energy Efficiency Outreach 	<ul style="list-style-type: none"> • Make Your Town Solar Friendly • Municipally Supported Community Solar • Community-Led Solar Initiatives • Renewable Government Energy Aggregation (R-GEA) 	<ul style="list-style-type: none"> • Make Your Town Electric Vehicle (EV) Friendly • Public EV Chargers • Electric Vehicle Outreach



Building an EV Future in New Jersey

NJ League of
Municipalities
Sustainable Jersey
EV Session

December 7, 2021

Presented By
Cathleen Lewis

Federal Priorities

- Funding for charging stations across the country
- Funding for federal fleet electrification
- Incentives for personal EVs
- Incentives for replacing diesel vehicles with ZEZs

New Jersey's Got That!

- It Pay\$toPlug, Clean Fleet, utility programs
- Clean Fleet
- Charge Up New Jersey
- NJZIP, RGGI diesel replacement program





2025 EV Charging Goals

- At least **400** DC Fast Chargers shall be available for public use at no fewer than **200** charging locations
- At least **1,000** Level Two chargers shall be available for public use.
- At least **15 percent** of all multi-family residential properties in the State shall be equipped with EVSE for the routine charging of plug-in electric vehicles.
- At least **30 percent** of all multi-family properties shall be equipped for electric vehicle charging.
- At least **20 percent** of all franchised overnight lodging establishments shall be equipped with EVSE for routine electric vehicle charging by guests of the establishment by providing Level Two EVSE.



Public Charging



Utility Filings

Make Ready Incentives

- Public
- Workplace
- MUD



Fast Charging

PSEG 1200

ACE 100



Level 2

PSEG 3500

ACE 1500+



MHD Charging

Straw Proposal for the Medium Heavy Duty EV EcoSystem was released on June 30, 2021. Six stakeholder meetings were scheduled and comments were due on October 5, 2021.



How do we encourage EV adoption for fleets ?

- Light duty
- Medium duty
- Heavy Duty

What will charging look like?

- Public charging
- On-site charging

What role will energy storage and renewable energy play?



Clean Fleet




- \$2,000 for a public L2 charger
- \$1,500 for a fleet L2 charger
- 50% (up to \$5,000) for the Make-Ready for an L2 charger
- 50% (up to \$75,000) for the Make-Ready and charger for a Fast Charger.

njcleanenergy.com/ev



Clean Fleet Program

- Electric vehicles are now included on the State Purchasing Contract under AwardT0099
- \$4,000 per battery electric vehicle
- Grants awarded on rolling basis until funding expended
- Questions?
EV.programs@bpu.nj.gov



	EVs	Charging stations
Local governments, entities, schools		
<i>serving populations < 20,000</i>	2	1
<i>serving populations > 20,000</i>	5	2
<i>serving populations > 50,000</i>	7	4
Local governments		
<i>serving populations > 100,000</i>	10	4
State agencies, boards, commissions, universities, and counties	10	4

www.NJCleanEnergy.com/EV





EV Goals

- At least **330,000** registered light duty EV by December 2025
- At least **2 million** registered light-duty EVs by December 2035;
- At least **85 percent** of all new light-duty vehicles sold or leased in the State shall be plug-in EVs by December 2040
- At least **25 percent** of State- owned non-emergency light-duty vehicles shall be EVs by December 2025
- **100 percent** of State-owned non- emergency light-duty vehicles shall be plug-in electric vehicles by December 2035

It Pay\$ to Plug In

DEP's Grant Program for EV Charging Stations

- Level 2 chargers
 - Up to \$4,000 per port for Level 2 chargers at public places, multi-family homes and workplaces (including fleets).
 - First-come first-served. We are accepting applications now for the waiting list.
- Fast Chargers
 - Up to \$200,000 per location for public fast chargers.
 - Competitive solicitation.
 - Stay tuned for future funding rounds.

www.drivegreen.nj.gov/plugin.html





NJ ZIP NJEDA's Zero Emission Incentive Program

Voucher program for zero-emission medium duty vehicles

- Vehicles Class 2b – Class 6
- For businesses and institutions -- including local governments and schools
- \$25,000 - \$100,000 voucher
- Institutions and businesses in the greater Camden, Newark, New Brunswick, and Shore areas.

www.njeda.com/njzip

Charge Up New Jersey



Up to \$5,000 for EVs

- \$25 per e-mile
- MSRP must be under \$55,000
- tiered incentive to prioritize incentive essential buyers and lessors

\$30 million funding pot

- Funding required each year for 10 years through the EV ACT

Program currently paused

- Following a public stakeholder process NJBPU is reviewing feedback and considering changes to the program, including increased funding.

chargeup.njcleanenergy.com



Year 1 Program Summary

330,000 EVs by
2025

The Charge Up New Jersey post-purchase incentive program is driving Electric Vehicle (EV) adoption in New Jersey.

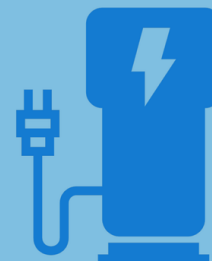
New Jersey residents received up to \$5,000 for the purchase or lease of a new EV in the state.



**OVER 7,500
NEW EVs
ON THE ROAD**
\$36 MILLION IN
INCENTIVES APPROVED



New Jersey's
cleanenergy
program™
njcleanenergy.com





@NJCleanEnergy



Contact info

Cathleen Lewis
E-Mobility Programs Manager
Cathleen.Lewis@nj.bpu.gov

Visit
NJCleanEnergy.com

Newsletter
NJCleanEnergy.com/NEWSLETTER

Listserves
NJCleanEnergy.com/LISTSERVS



DCA Statewide Model Municipal EV Ordinance

(Effective Sept. 1, 2021)

12/7/21



Model Municipal EV Ordinance

- Written with support from the DEP and BPU to comply with [P.L. 2021, c. 171](#), which Governor Phil Murphy signed into law on July 9, 2021.
 - Law requires that Electric Vehicle Supply/Service Equipment (EVSE) and Make-Ready parking spaces be designated as a permitted accessory use in all zoning or use districts and establishes associated installation and parking requirements related to EVSE in New Jersey's 565 municipalities. Requires DCA publish a model land use ordinance to implement the law.
- DCA published **Model EV Ordinance on September 1, 2021**, that includes mandatory provisions from the law. Municipalities cannot change these provisions.
- Model EV Ordinance also addresses **sightline, installation and setback requirements** and other **health- and safety-related specs** for EVSE & Make-Ready parking spaces ("Reasonable Standards"). Municipalities can change this part of the ordinance.
- **Effective immediately** in each municipality. Supersedes any existing ordinances.
- Provisions must be incorporated into **RSIS and UCC**.
- Intent of the Model EV Ordinance is to ensure that municipalities are requiring installation in a **consistent manner** and to provide an ordinance that can be **easily used** by every municipality with no or minimal amendments.

Mandatory Provisions: Approvals & Parking



- All Applications for installation of EVSE (charging station) or Make-Ready parking spaces ***shall be*** considered **permitted accessory use and permitted accessory structure** in all zoning or use districts and ***shall not*** require a variance.
- Applies to existing buildings and new buildings. If existing, it ***shall not*** require **site plan approval** and ***shall be*** approved through issuance of zoning permit.
- **Parking spaces** with EVSE and Make-Ready equipment ***shall*** be included in the calculation of **minimum required parking spaces**.
- **Parking spaces** with EVSE or Make-Ready ***shall*** count as **at least 2 parking spaces** (no more than 10% reduction of total).

Mandatory Requirements for chargers and Make-Ready parking spaces for new construction

- As a condition of preliminary site plan approval, applications involving **new** multiple dwelling with ≥ 5 units:
 - Immediately: 15% of parking spaces shall be make-ready and 1/3 of those shall have EVSE installed;
 - Within 3 years: install EVSE in an additional 1/3 of the original 15%
 - Within 6 years: install EVSE in the final 1/3 of the original 15%.
 - Overall, at least 5% of EVSE must be accessible for people with disabilities
 - Can install EVSE at a faster pace
- Applications involving **new garage or parking lot not covered above:**

# of Parking Spaces	# of Make-Ready Required (can be EVSE)
≤ 50	1
51-75	2
76-100	3
101-150	4
> 150	4%

← 1 accessible

← 5% accessible

- Exempt: a retailer that provides 25 or fewer off-street parking spaces
- Municipality may encourage (but not require) additional EVSE or Make-Ready parking spaces.

Reasonable Standards

- Municipalities may deviate from the Reasonable Standards (Section F) of the model ordinance by changing this section of the ordinance through the normal ordinance approval/amendment process. However, this does not authorize a municipality to require site plan review for the installation of EVSE or Make-Ready parking spaces.
- This Section of the ordinance covers the following:
 - Accessible EVSE and Make-Ready parking spaces (size, location)
 - EV only parking, violations, use of time limits (public vs. private)
 - Safety Issues (ID of EV spaces, lighting, setbacks, EVSE protection, mounting of EVSE, cord management system, maintenance)
 - Signage (regulatory and wayfinding/directional)
 - Usage Fees
- Location and layout of EVSE and Make-Ready parking spaces is expected to vary based on the design and use of the primary parking area. It is expected **flexibility** in this Section will be required to provide the most convenient and functional service to users.



What's Next?

- Model Ordinance on DCA and LPS website:
<https://www.nj.gov/dca/dlps/home/modelEVordinance.shtml>
- Changes can be made to the ordinance in the future. Changes to the EVSE and Make-Ready requirements must go through rule making. Changes to other parts of the ordinance do not.
- DEP & DCA working on BMP as companion to model ordinance.





Additional laws

1. P.L. 2019, c. 362 sets aggressive goals for New Jersey EV sales and public charging stations, requiring the establishment of rebates for EV purchases, and directing the state to electrify its fleet.
https://www.njleg.state.nj.us/2018/Bills/PL19/362_.PDF
2. P.L. 2021, c. 168 [1653_R1a.PDF \(state.nj.us\)](#) encourages municipalities to identify appropriate locations for the development of publicly-available infrastructure for fueling or charging zero-emission vehicles when adopting redevelopment plans.
3. P.L. 2020, c. 108 prohibits common interest communities from adopting rules that prohibit or unreasonably restrict the installation or use of EVSE in the designated parking space of a unit owner.
(https://www.njleg.state.nj.us/2020/Bills/PL20/108_.PDF).
4. P.L. 2020, c. 80 [80_.PDF \(state.nj.us\)](#) requires a developer to offer to install, or to provide for the installation of, an electric vehicle charging station into a dwelling unit when a prospective owner enters into negotiations with the developer to purchase a dwelling unit.
5. P.L. 2019, c. 267 [267_.PDF \(state.nj.us\)](#) encourages local units to plan for EVSE.

FLYER:

EV resources for local government



Includes:

- Incentives
- Procurement Tools
- Policy & Planning Support
- Sustainable Jersey Resources
- Resources for Residents

Download from
www.drivegreen.nj.gov/localresources.pdf

Contact Information

- Maria Connolly, Principal Planner

Local Planning Services, NJDCA: maria.connolly@dca.nj.gov





Make Your Town EV Friendly:

New Statewide Model EV Ordinance, New Sustainable Jersey Actions, New Funding

December 7, 2021





Framework for EV Ready Communities

Categories of action with best practices

Source: Great Plains Institute (GPI)

Category of action	EV Policy, Goals and Metrics	Regulation	Utility Engagement	Education and Incentives	Public Sector Leadership	Shared Mobility
Best Practices	P. 1 - Address EVs and EVSE in Comprehensive Plans	R. 1 - Enable EV and EVSE in land use regulations	U. 1 - Joint education and marketing with utility	E. 1 - Host public education events and campaigns	L. 1 - Electrify public fleet	S. 1 - Deploy electric transit, school buses
	P. 2 - Address EVs and EVSE in Specific-Area Plan	R. 2 - Incorporate EV and EVSE in parking standards	U. 2 - Work with utility on interconnection process	E. 2 - Create EV/EVSE education of commercial property owners	L. 2 - Provide public chargers	S. 2 - Deploy electric paratransit vehicles
	P. 3 - Address EVs and EVSE in Functional Plan	R. 3 - Incorporate EV and EVSE in the building code	U. 3 - Work with utility to promote or deploy managed charging	E. 3 - Financial incentives for EVSE installation	L. 3 - ROW charging deployment	S. 3 - Develop electric bike or scooter opportunities
	P. 4 - Establish a deployment benchmark and goals	R. 4 - Streamline EVSE permitting	U. 4 - Create or promote utility incentives for EV and/or EVSE	E. 4 - Expand local access to EV models, options	L. 4 - Install employee-reserved EVSE	S. 4 - Develop car sharing program
		R. 5 - Require EVSE in multi-family housing	U. 5 - Work with utility to integrate renewable energy			



Sustainable Jersey EV Actions

Fleet Inventory

- Assists municipalities in completing municipal fleet inventory
- Includes spreadsheet that automatically calculates carbon emissions of municipal fleet

Public EV Charging Infrastructure

- Awards points for installation of municipally-supported public EV charging stations

Purchase Alternative Fuel Vehicles

- Awards points for purchase of electric and other alternative fuel fleet vehicles



The Borough of Runnemede added a Chevy Bolt to its fleet.



Resource

Sustainable Jersey
Alternative Fuel Vehicle Procurement Guide



Sustainable Jersey
Sustainability Institute at The College of New Jersey
Forcina Hall, 3rd Floor
2000 Pennington Rd.
Ewing, NJ 08628-0718



Framework for EV Ready Communities

Categories of action with best practices

Source: Great Plains Institute (GPI)

Category of action	EV Policy, Goals and Metrics	Regulation	Utility Engagement	Education and Incentives	Public Sector Leadership	Shared Mobility
Best Practices	P. 1 - Address EVs and EVSE in Comprehensive Plans	R. 1 - Enable EV and EVSE in land use regulations	U. 1 - Joint education and marketing with utility	E. 1 - Host public education events and campaigns	L. 1 - Electrify public fleet	S. 1 - Deploy electric transit, school buses
	P. 2 - Address EVs and EVSE in Specific-Area Plan	R. 2 - Incorporate EV and EVSE in parking standards	U. 2 - Work with utility on interconnection process	E. 2 - Create EV/EVSE education of commercial property owners	L. 2 - Provide public chargers	S. 2 - Deploy electric paratransit vehicles
	P. 3 - Address EVs and EVSE in Functional Plan	R. 3 - Incorporate EV and EVSE in the building code	U. 3 - Work with utility to promote or deploy managed charging	E. 3 - Financial incentives for EVSE installation	L. 3 - ROW charging deployment	S. 3 - Develop electric bike or scooter opportunities
	P. 4 - Establish a deployment benchmark and goals	R. 4 - Streamline EVSE permitting	U. 4 - Create or promote utility incentives for EV and/or EVSE	E. 4 - Expand local access to EV models, options	L. 4 - Install employee-reserved EVSE	S. 4 - Develop car sharing program
		R. 5 - Require EVSE in multi-family housing	U. 5 - Work with utility to integrate renewable energy			



Make Your Town EV Friendly

- Adopt Model Statewide EVSE Ordinance
 - Must comply with SJ guidance on “reasonable standards”
 - ADA Accessibility
 - Lighting
 - Parking Enforcement
 - Safety (bollard, cord management, etc)
 - Signs

§
AN ORDINANCE
AUTHORIZING AND ENCOURAGING
ELECTRIC VEHICLE
SUPPLY/SERVICE EQUIPMENT (EVSE) & MAKE-READY PARKING SPACES

[Note: Pursuant to P.L. 2021, c.171, all sections of this model ordinance become effective in each municipality upon its publication on the Department of Community Affairs' Internet website. Municipalities may make changes to the reasonable standards in the model ordinance as noted below through the normal ordinance amendment process. However, municipalities may not make changes to the legislatively mandated requirements in Sections C., D., and E.]

This Ordinance sets forth procedures for the installation of Electric Vehicle Supply/Service Equipment (EVSE) and Make-Ready parking spaces and establishes associated regulations and other standards within the {name of municipality} _____ of {name of county} _____.

WHEREAS, supporting the transition to electric vehicles contributes to {name of municipality} _____'s commitment to sustainability and is in the best interest of public welfare; and

WHEREAS, installation of EVSE and Make-Ready parking spaces encourages electric vehicle adoption; and

WHEREAS, the {name of municipality} _____ encourages increased installation of EVSE and Make Ready parking spaces; and

WHEREAS, adoption of this ordinance supports the State of New Jersey's goals to reduce air pollutants and greenhouse gas emissions from the transportation sector as outlined and supported by various programs related to NJ's 2019 Energy Master Plan, Global Warming Response Act (P.L.2007, c.112 (C.26:2C-37 et al.)), and EV Law (P.L. 2019, c. 362); and

WHEREAS, P.L. 2021, c.171, which Governor Murphy signed into law on July 9, 2021, requires EVSE and Make-Ready parking spaces be designated as a permitted accessory use in all zoning or use districts and establishes associated installation and parking requirements; and

WHEREAS, adoption of this ordinance will support the Master Plan of {name of municipality} _____ adopted in concurrence with P.L. 1975 c. 291, s. 1 eff. Aug. 1, 1976, and is consistent with goals {list #s or names} _____ of the Master Plan as well as the land

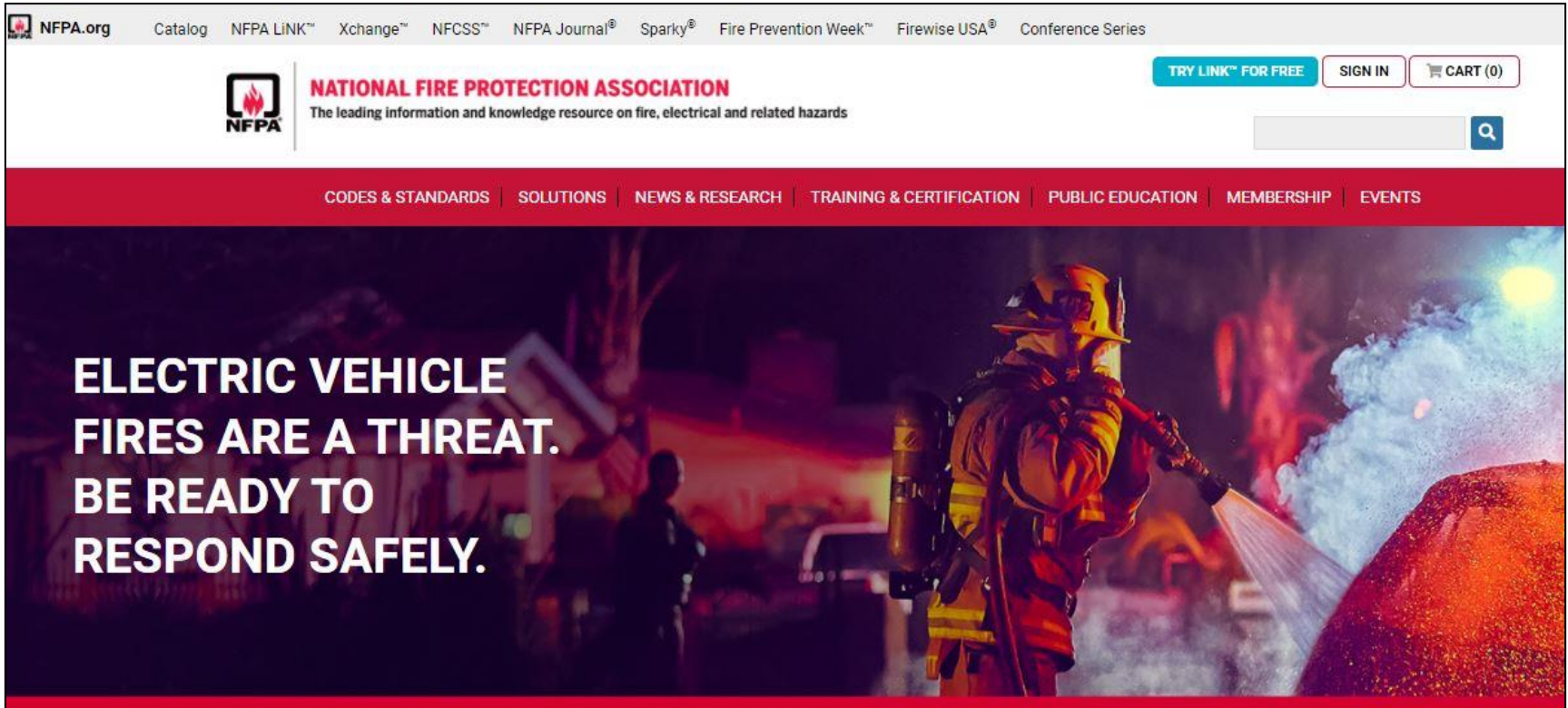
1

DCA Model Statewide EVSE Ordinance

www.nj.gov/dca/dlps/home/modelEVordinance.shtml



Make Your Town EV Friendly

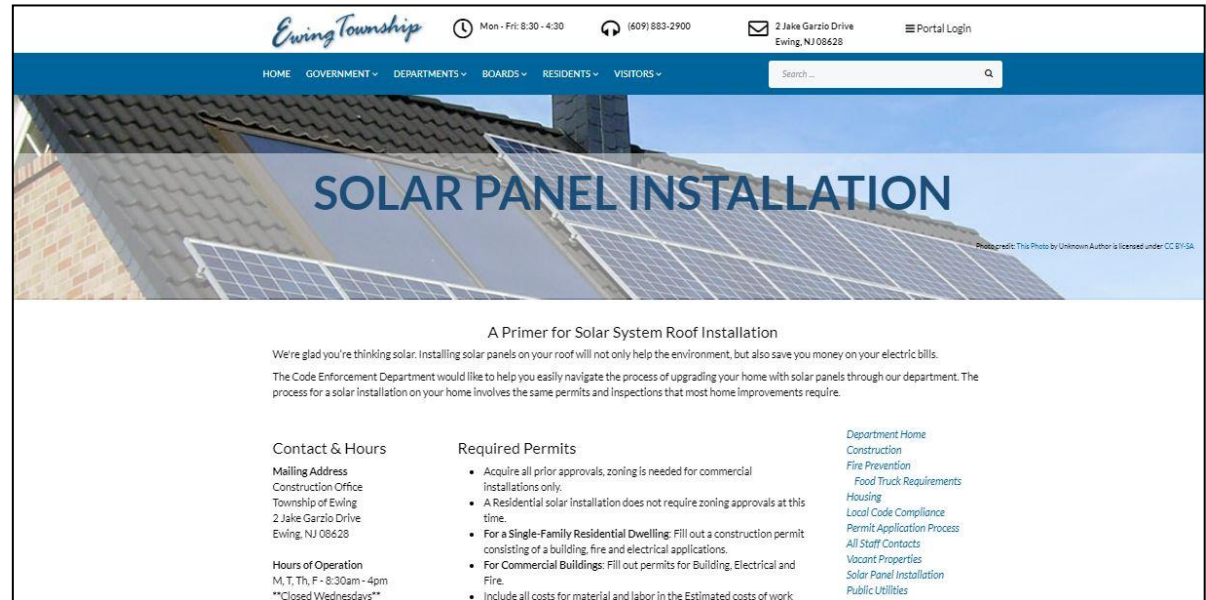


- Update land use code
- First responder training



Make Your Town EV Friendly

- Choose one of three options:
 - Information about EVSE permitting on municipal website
 - Information about EVSE inspection on municipal website
 - Amend master plan to incorporate electric vehicles





Make Your Town EV Friendly Resubmission Requirement

Document implementation of EVSE requirements.

- When certificate of occupancy is issued
 - Make-Ready 15% of required parking spaces
 - EVSE in one-third of 15 percent of Make-Ready parking spaces
- Three years following issuance of certificate of occupancy
 - EVSE in additional one-third of original 15% Make-Ready parking spaces
- Six years following issuance of certificate of occupancy
 - EVSE in final one-third of original 15% of Make-Ready parking spaces
- Throughout installation of EVSE
 - At least 5% EVSE accessible for people with disabilities



Forthcoming Resources

Guidance Documents under Development

- Charge Up Your Town: Best Management Practices for Ensuring Your Town is EV Ready
- Permit Checklist Template



Electric Vehicle Outreach Action

Select two audience types

- Residential
- Commercial fleets
- Commercial
- Workplaces
- Multifamily
- Auto dealerships



For each selected audience, complete 2 outreach activities such as:

- Webpage on green team or municipal website
- Create & distribute a brochure, flyer, and/or newsletter
- Table and/or present at local events
- Social media and/or email campaign
- Award recognizing individuals/businesses for EV/EVSE accomplishments
- “Ride and drive” or other EV-centric event



Anne Heasly, Program Manager for Policy and Planning, Sustainable Jersey

heaslya@tcnj.edu 609 771-2865



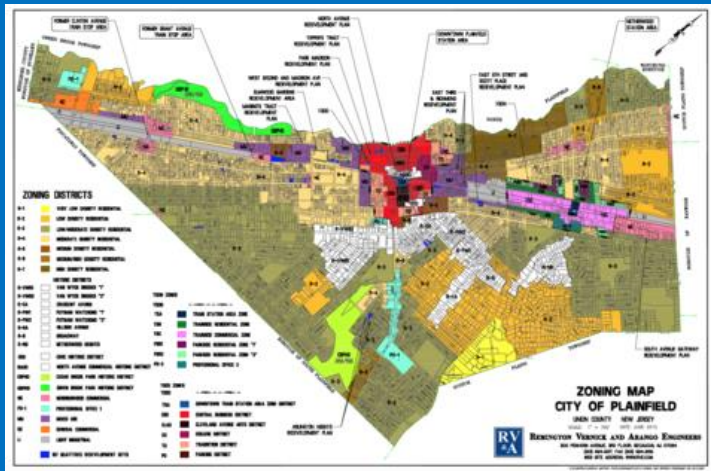


NEW JERSEY ASSOCIATION OF PLANNING & ZONING ADMINISTRATORS

The Make Your Town EV Friendly: New Statewide Model EV Ordinance, New Sustainable Jersey Actions, New Funding December 7, 2021

The Model Ordinance 101

- ❖ Approvals & Permits - Installation of EVSE or Make-Ready Spaces
 - ❖ EVSE or Make-Ready Parking Spaces are now a permitted accessory use in ALL Zones in New Jersey's 565 municipalities!
 - ❖ No site plan or other land use board review required
 - ❖ No variance required
 - ❖ Applies to Existing building and new buildings



The Model Ordinance 101

- ❖ Approvals & Permits - Installation of EVSE or Make-Ready Spaces (Cont.)
 - ❖ Existing Buildings:
 - Gasoline Service Station
 - Retail Establishment
 - Any other existing building





The Model Ordinance 101

- ❖ Zoning Permit Required
 - ❖ Completeness Review Requirements (20 Day Maximum Review Time)
 - ❖ Permit Fee
 - ❖ All necessary documentation
 - Location & layout plan
 - Sightline / Installation / Setback requirements
 - Other Health & Safety Related Specifications
 - Parking space identification / Wayfinding signage
 - Adequate site lighting and landscaping
 - EVSE outlet/connector design/cord management system
 - Accessibility
- ❖ Note: Not subject parking requirements

The Model Ordinance 101

- ❖ **Completeness Review (Cont.)**
 - ❖ A notice of incompleteness must be provided within 20 days after the filing of the application or it shall be deemed complete
 - ❖ A one-time written correction notice is not issued within 20 days after filing of the application detailing all deficiencies and identifying any information explicitly necessary to complete a review of the permit application
- ❖ **Compliance Review**
 - ❖ Does not violate bulk requirements & conditions of approval
 - ❖ All other conditions of prior approvals to be met
 - ❖ Complies with UCC

The Model Ordinance 101

❖ Sample Zoning Permit Language:

This Certifies that an application for the issuance of a Zoning Permit has been examined:

Work Description: Accessory structure - EVSE - two (2) dual (4 parking spaces) level 2 charging station (Electrical Vehicle Supply Equipment) as per proposed plan. All conditions of prior approvals shall be met. Shall comply with the construction codes (UCC).

Upon review it was determined that the Zoning Permit is permitted by 40:55D-70 (MLUL) & DCA Model Ordinance dated 9/1/21



The Model Ordinance 101

❖ Requirements for New Installation:

❖ Multiple Dwelling

- As a condition of preliminary site plan approval, applications involving NEW multiple dwelling with ≥ 5 units:
 - Immediately: 15% of parking spaces shall be make-ready and 1/3 of those shall have EVSE installed
 - 3 years: 1/3 of original 15%
 - 6 years: Final 1/3 of the original 15%
- Other:
 - Overall, at least 5% of EVSE must be accessible for people with disabilities
 - Can install EVSE at faster pace

The Model Ordinance 101

- ❖ Requirements for New Installation: Garage or Parking Lot
 - ❖ As a condition of preliminary site plan approval, each application involving a parking lot or garage:

# of Parking	Minimum # of Make-Ready Required (can be EVSE)	Minimum # of Make-Ready parking spaces accessible for people with disabilities
≤ 50	1	0
51 - 75	2	0
76 - 100	3	0
101 - 150	4	1
> 150	4%	5%

The Model Ordinance 101

- ❖ Requirements for New Installation: Garage or Parking Lot - Continued
 - ❖ Other:
 - In lieu of installing Make-Ready parking spaces, a parking lot or garage may install EVSE to satisfy the requirements
 - Can install EVSE at faster pace
 - Exemptions (Shall not be required to provide or install any EVSE or Make-Ready parking spaces):
 - Retailer (25 or fewer off-street parking spaces)
 - Developer or Owner of Single Family Home

The Model Ordinance 101

- ❖ Effective Date Requirements for New Installation per Department of Community Affairs (DCA):
 - ❖ July 9th, 2021 (Bill S3223)
 - Time of Application Rule DOES NOT APPLY!
 - DCA to release clarification



The background is a solid blue color. It features several decorative elements: a large, semi-transparent pie chart with a green center and blue outer rings in the upper right; several smaller, semi-transparent pie charts scattered around; and a bar chart in the bottom right corner with four bars of increasing height, each composed of three stacked segments in different shades of blue.

Thank You

Sustainable Jersey Supporters & Sponsors

Program Underwriters



Grants Program



Corporate Sponsors

PLATINUM



GOLD



SILVER





- Fund a project relating to Sustainable Jersey actions
- \$2,000, \$10,000, \$20,000
- Informational webinar Monday, December 13 at 1:00pm - bit.ly/2022SJPSEGWebinar
- Application due **Friday, February 11, 2022**
- www.sustainablejersey.com/grants



New Jersey Board of Public Utilities Community Energy Plan Grants

There are two grant award levels

- All New Jersey municipalities
 - Eligible for a \$10,000 grant
- Overburdened Municipalities
 - Eligible for a \$25,000 grant
 - Technical assistance
 - develop and submit application
 - assistance in creation of Plan

Application Deadline:
Friday March 18, 2022

Overburdened
Municipalities

Asbury Park City	Millville City
Atlantic City	New Brunswick City
Bridgeton City	Newark City
Buena Boro	North Wildwood City
Camden City	Passaic City
Cape May Point Boro	Paterson City
Chesilhurst Boro	Paulsboro Boro
City of Orange Twp	Penns Grove Boro
Clementon Boro	Perth Amboy City
Commercial Twp	Phillipsburg Town
East Newark Boro	Plainfield City
East Orange City	Pleasantville City
Egg Harbor City	Prospect Park Boro
Elizabeth City	Salem City
Fairfield Twp	Seaside Heights Boro
Flemington Boro	Trenton City
Freehold Boro	Union City
Harrison Town	Victory Gardens Boro
Hi-nella Boro	Vineland City
Irvington Twp	West New York Town
Lakewood Twp	Wildwood City
Lindenwold Boro	Woodbine Boro
Long Branch City	Woodlynne Boro
Maurice River Twp	Wrightstown Boro



Upcoming Sustainable Jersey Events

Complete Streets Technical Assistance Project Types Webinar

Dec 09, 2021, 12:00 PM to 1:00 PM

2022 Sustainable Jersey Grants Cycle Funded by the PSEG Foundation

Dec 13, 2021, 1:00 PM to 2:00 PM

New Resources for Sustainable Jersey Arts & Creative Culture Actions

Dec 14, 2021, 1:00 PM to 2:00 PM

Complete Streets Technical Assistance Application Process Webinar

Dec 15, 2021, 12:00 PM to 1:00 PM

Creating a Community Energy Plan: Resources and Technical Assistance

Jan 12, 2022, 1:00 PM to 2:30 PM

Funding for Transitioning Fleets to EVs

January 26, 2022, 1:00pm – 2:30pm

www.sustainablejersey.com/nc/events



Thank You!

Maria Connolly

Principal Planner

New Jersey Department of Community Affairs

Maria.Connolly@dca.nj.gov

Anne Heasly

Program Manager for Policy and Planning,
Sustainable Jersey

heaslya@tcnj.edu

David Kois

Sustainability Director, Deputy Zoning Official, Hillsborough, NJ

President, New Jersey Association of Planning and Zoning Administrators

dkois@hillsborough-nj.org

Cathleen Lewis

E Mobility Program Manager

New Jersey Board of Public Utilities

cathleen.lewis@bpu.nj.gov

Tracey Woods

Research and Project Specialist
Sustainable Jersey

woodst@tcnj.edu