

2026 NEW JERSEY

SUSTAINABILITY

SUMMIT



Rooted in Sustainability

May 15, 2026



Panel Speakers

Rich Kerr, Superintendent of
Recreation and Open Space,
Evesham Township

Thomas Flynn, Environmental
Specialist, Township of Woodbridge

Tracey Woods, Energy Program
Director, Sustainable Jersey





Operations & Maintenance Actions

Municipal Program

Green Grounds & Maintenance Policy (10 pts)

- Adopt policy addressing:
 - efficient landscape design,
 - water consumption minimization,
 - recycled materials & composting
 - Integrated Pest Management

Recycled Materials & Composting (10 pts)

- Implement municipal composting & landscape material recycling program, &/or
- Reuse of municipal waste products



Sustainable New Jersey





Green Infrastructure

Uses natural base solution to make ecosystems cleaner, cooler, more resilient and healthier for people and the environment



- Rain Gardens – Capture and filter stormwater, allowing it to soak into the ground before entry into grey or legacy infrastructure. (Designed site challenges, maintenance, native plant selections)
- Floating Wetlands – Uses plants & natural processes to clean water and support habitat for wildlife, regulate temperature and algae growth. (Maintenance, careful design, (1) Piece of the puzzle for heavily polluted waters)
- Rain Barrels/ Cisterns – Capture and store rain water for reuse, reducing demand on treated systems, decreasing stormwater run off and utility costs. Contains debris from roofs, drains and cisterns. (Non potable water for irrigation & outdoor cleaning).
- Maintenance, a little bit goes a long way...





Soil Health

- Soil Tests
 - *Most important tool*
- Soil Composition
 - *Use your resources: Acris, soil conservation districts, get dirty..*
- Fertilization, Synthetic or Organic, and do you really need it?
 - *What fits into your budget...What fits into your IPM plan*
- Soil Health and its Correlation to IPM
 - *Soil health is one of the most important keys to success in IPM.*
 - *Without soil health, utilizing IPM correctly is an up hill battle.*



IPM



- What is IPM, and why should we plan for it as it relates to Sustainability
 - *Reduces dependence on synthetic chemicals by combining biologics, cultural and physical means to control pests.*
- Blanket Bans- Good Or Bad?
 - *Total bans never achieves the desired results. Learn to reduce your dependence on Herbicides and Pesticides.*
- Acceptable Limits of Pests
 - *What is you and your towns level of acceptable pests?*





Maintenance



- Juggling Act- How Evesham handles Maintenance of No- Mows, Green Infrastructure
 - *1st step notifications to residents. Especially no-mows.*
 - *Scheduling Maintenance- Add it into the schedule, solicit help through environmental commissions, green teams and other volunteer groups.*

- Green Infrastructure- Do's, Try Not To and Do Not's
 - *Do...Maintain*
 - *Try Not To...over do it*
 - *Do Not..."Set it and Forget"*

- Engaging the Public, Administration, Commissions
 - *The most important aspect of maintenance, Engagement.*
 - *Remove some of the load off of your department*





Mowing and Sustainability

- Does an area need to be mowed and why?
- Can Mowing be reduced?
- No Mow areas and how to educate the public.
- Key Takeaways.
 - Reduced Emissions*
 - More Biodiversity,*
 - Cleaner water*
 - *Climate Resilience*



Contact Info

- Rich Kerr
 - *Superintendent of Recreation and Open Space,
Evesham Township, NJ*
- Cell: (609) 868-2527
- Email: KerrR@evehsam-nj.gov





May 15, 2026

Sustainable Landscaping

Thomas C. Flynn, M.P.A., CFM

Environmental Specialist

Township of Woodbridge, N.J., Division of Engineering

Mayor, John E. McCormac

Email: Thomas.Flynn@Twp.Woodbridge.NJ.US

Email: Thomas.Flynn@Twp.Woodbridge.NJ.US

Mayor, John E. McCormac

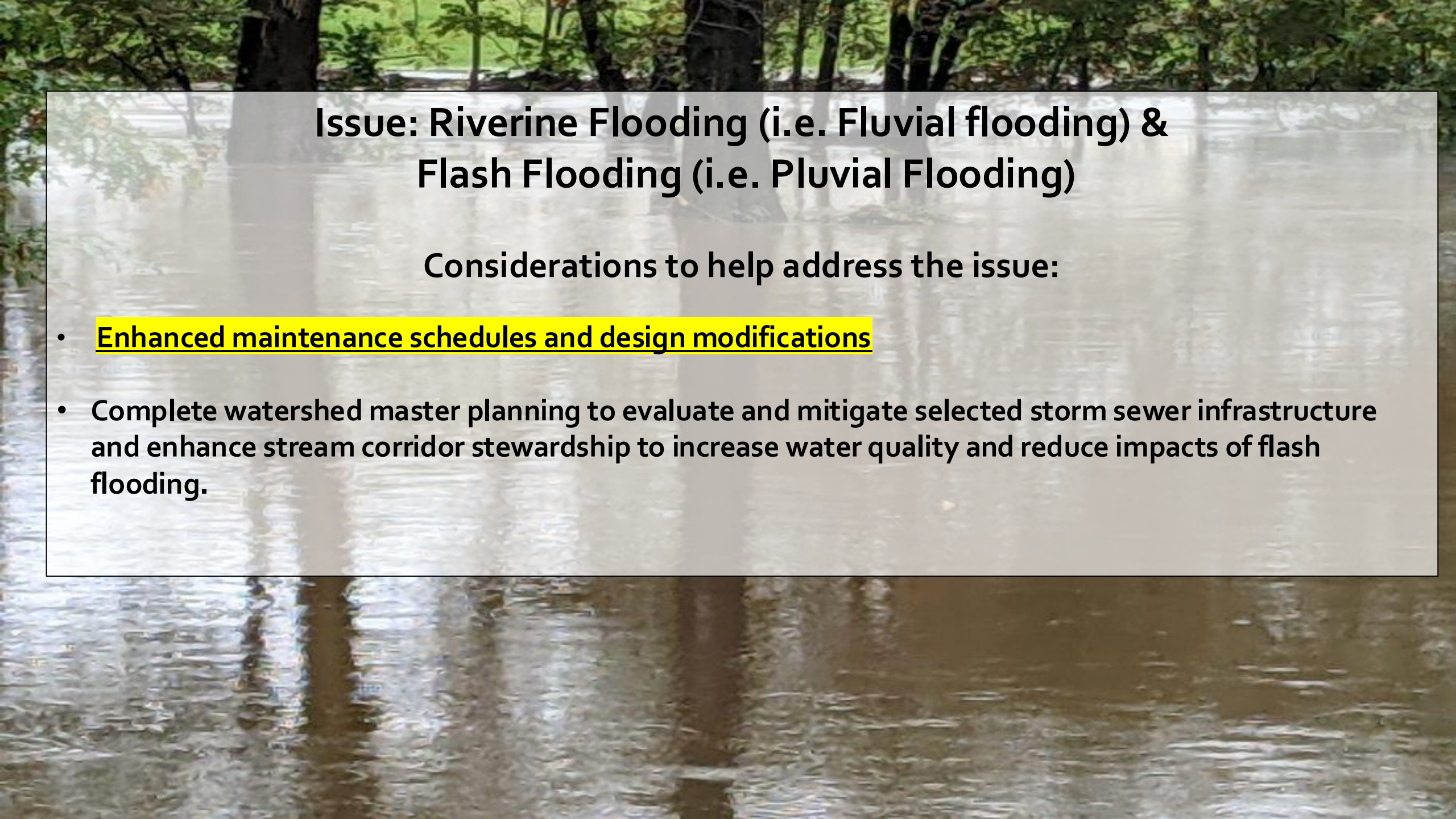
Township of Woodbridge, N.J., Division of Engineering



Woodbridge Township is the third oldest municipality in New Jersey

Woodbridge is over 350 years old, 23.1 square miles, and is comprised of ten towns: Avenel, Colonia, Fords, Hopelawn, Iselin, Keasbey, Port Reading, Menlo Park Terrace, Sewaren, and Woodbridge

- **> 870 acres of surface water**
- **> 1,160 acres of wetlands**
- **> 3,000 acres of regulated floodplains**
- **> 500 stormwater outfalls**
- **> 2,000 stormwater inlets**



Issue: Riverine Flooding (i.e. Fluvial flooding) & Flash Flooding (i.e. Pluvial Flooding)

Considerations to help address the issue:

- **Enhanced maintenance schedules and design modifications**
- **Complete watershed master planning to evaluate and mitigate selected storm sewer infrastructure and enhance stream corridor stewardship to increase water quality and reduce impacts of flash flooding.**

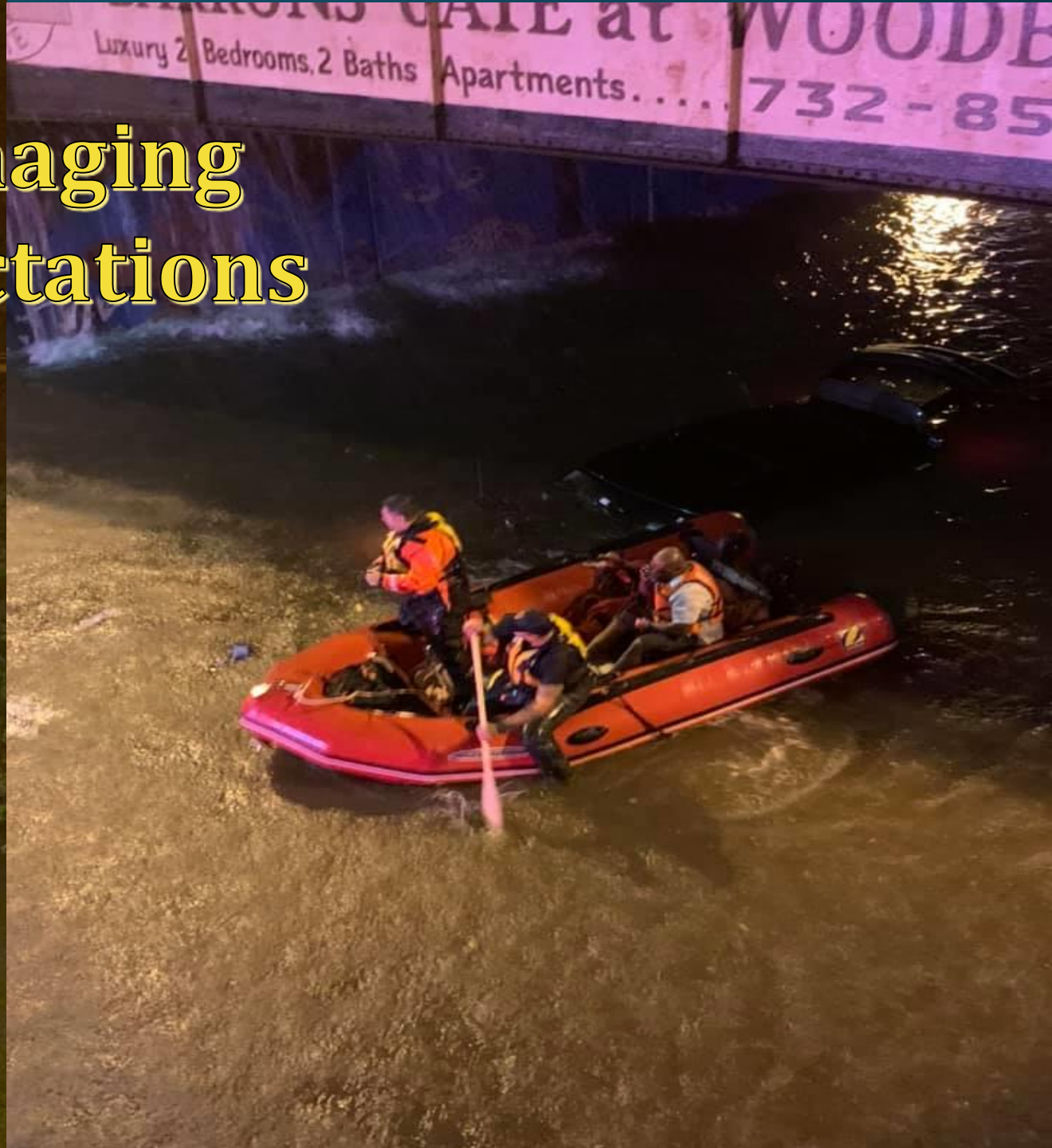


**Plan
Like Nature
Has No Memory
&
Implement
Like Time
Has No Heart**

What Does That Look Like?



Managing Expectations



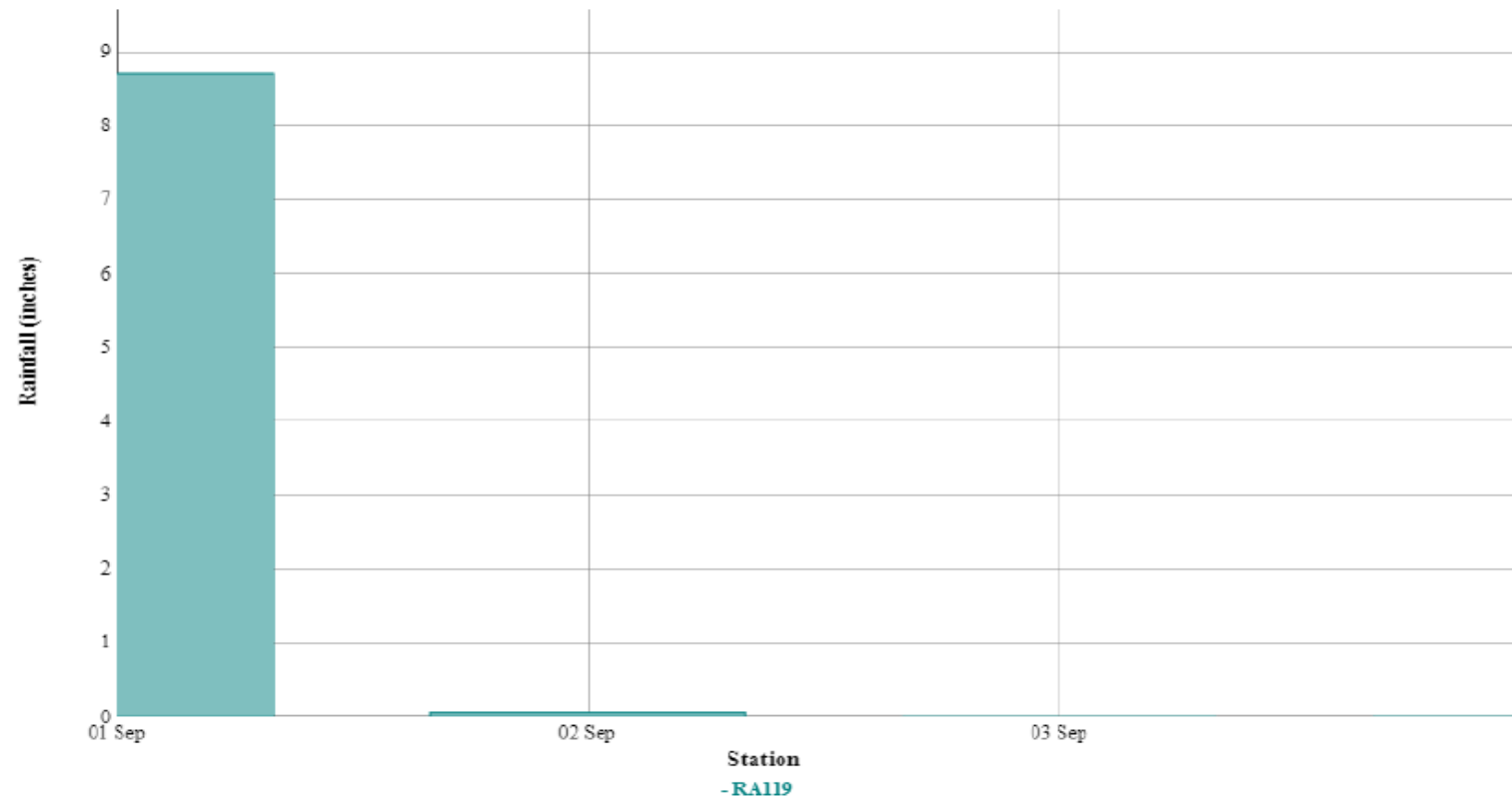
2021

Problem Site Maintenance (PSM) Post Storm Event Assessments (IDA)

NJDEP New Jersey Department of Environmental Protection - Rainfall - Graph

Rainfall data

From 09/01/2021 to 09/04/2021





Green Infrastructure Maintenance is Not Optional

— it's essential to keep these systems delivering their intended benefits, protecting public health, and ensuring that the initial investment yields lasting environmental and community gains



So why does green infrastructure maintenance matter?



Prevents Degradation and Costly Repairs

Neglect can lead to small issues escalating into major problems. For example, a rain garden blocked by sediment may fail to manage stormwater.



Ensures Continued Functionality and Performance

Green infrastructure — such as rain gardens, If not maintained, components like plants, soil, and drainage systems can become clogged with debris, overgrown, or damaged, reducing their ability to capture and infiltrate water, filter pollutants.



Maximizes Environmental Benefits

Proper maintenance enhances the system's capacity to reduce stormwater runoff, improve water quality, mitigate the urban heat island effect, and support wildlife habitats









DPW Support and Training

Adaptive Management





COMMON INVASIVES

SPECIES

Mugwort

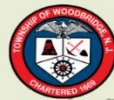
Is an aggressive establishment and colonization in roadsides, right-of-way areas, and disturbed and uncultivated areas. Can be identified by their alternate, papery, with large pinnate lobes.

Phragmites

Perennial wetland grass that grows three to 20 feet tall with dull, very slightly ridged, stiff and hollow stems. They can be identified by their smooth, linear leaves and bushy, light brown to purple plumes.

Tree of Heaven

Spreads quickly through seeds and roots and is difficult to control. Tree of Heaven can be identified by their large compound leaves and hanging pod shaped seeds.



WHAT IS AN OVERGROWN LAWN?

AN OVERGROWN LAWN IS SIMPLY TURF GRASS THAT HASN'T BEEN MAINTAINED. IT USUALLY INCLUDES: TALL, UNIFORM GRASS, FEW OR NO FLOWERING PLANTS, INVASIVE WEEDS, LACK OF PLANT DIVERSITY, & NO INTENTIONAL DESIGN OR ECOLOGICAL PURPOSE

THESE SPACES LOOK MESSY, DULL, AND UNKEPT.



WHAT ARE POLLINATOR HABITATS?

HEALTHY POLLINATOR HABITATS INCLUDE: NATIVE WILDFLOWERS, FLOWERING SHRUBS, GRASSES THAT SUPPORT INSECTS, DIVERSE PLANT HEIGHTS AND COLORS, BLOOMING PLANTS FROM SPRING THROUGH FALL

DO NOT MOW!

THESE SPACES LOOK INTENTIONAL, COLORFUL, AND FULL OF LIFE!



Preventative and Corrective Maintenance

Proper and timely maintenance is important for continuous, effective function of the rain garden. Access to the rain garden from surrounding lawn areas should be maintained at all times. The following maintenance actions are required to keep the rain garden functioning properly.

WATERING

Water is essential for the survival of a newly installed rain garden. The garden should be watered regularly during the first three months and as needed throughout the future in times of drought. Plants should be watered every day for the first week they are in the ground and then once a week after that, unless there is substantial rainfall. In hot weather or times of drought, the rain garden will need water one to two times a week to prevent the loss of plants, even if the garden is already established.

WEEDING

Remove unwanted weeds from the garden by hand. Pull them from the base of the weed to remove the roots. As the garden becomes established, the rain garden plants will spread and out-compete unwanted weeds.

MULCHING

Mulch is used to prevent weeds and retain moisture in the rain garden. During the first year the garden is growing, maintain a 3-inch layer of mulch between plants. As the rain garden plants spread and become denser, you may find mulching the garden more difficult. Mulching beyond the first year is optional. Please be careful not to excessively mulch the garden, and keep mulch away from any drain inlets and outlets.

INSPECTING AND CLEANING INLETS/OUTLETS

Inspect the rain garden's inlets monthly, and be sure to remove any leaves, trash, or debris that may prevent water from passing through. Observe the inlet during rainstorms to make sure stormwater is flowing into the rain garden. After rainstorms, please check the garden to be sure drainage outlet paths are clear and that water is not ponding for more than 48 hours. All structural components should be inspected at least once each year.

NO MOWING

DO NOT mow or use a line-trimmer inside of the rain garden. This damages the plants and can destroy the rain garden.



Green Infrastructure Maintenance Report Form

GENERAL INFORMATION

Name(s) of person inspecting the green infrastructure system:		Date:
Location (address and cross streets/site location name):	Property Owner / Tax Parcel Block & Lot:	
Property owner contact information:	Type of green infrastructure system:	

EXISTING CONDITIONS

Description of the current site conditions and specific condition of the system:
--

GENERAL OBSERVATIONS	YES	NO	COMMENTS
1) Any reports of the system not functioning?			
2) Are there any unauthorized or malfunctioning structures located in the system?			
3) Is the system overgrown with vegetation or contain excessive debris/trash?			
4) Is there standing water or evidence of standing water?			
5) Signs of breakage, damage, corrosion or rusting of any structures or components?			
6) Debris or sediment accumulation clogging the system?			
7) Signs of erosion, disturbance, or vandalism?			
8) Is vegetation healthy and thriving?			
9) Is there evidence that anyone has maintained the system in the recent past?			

ADDITIONAL OBSERVATIONS

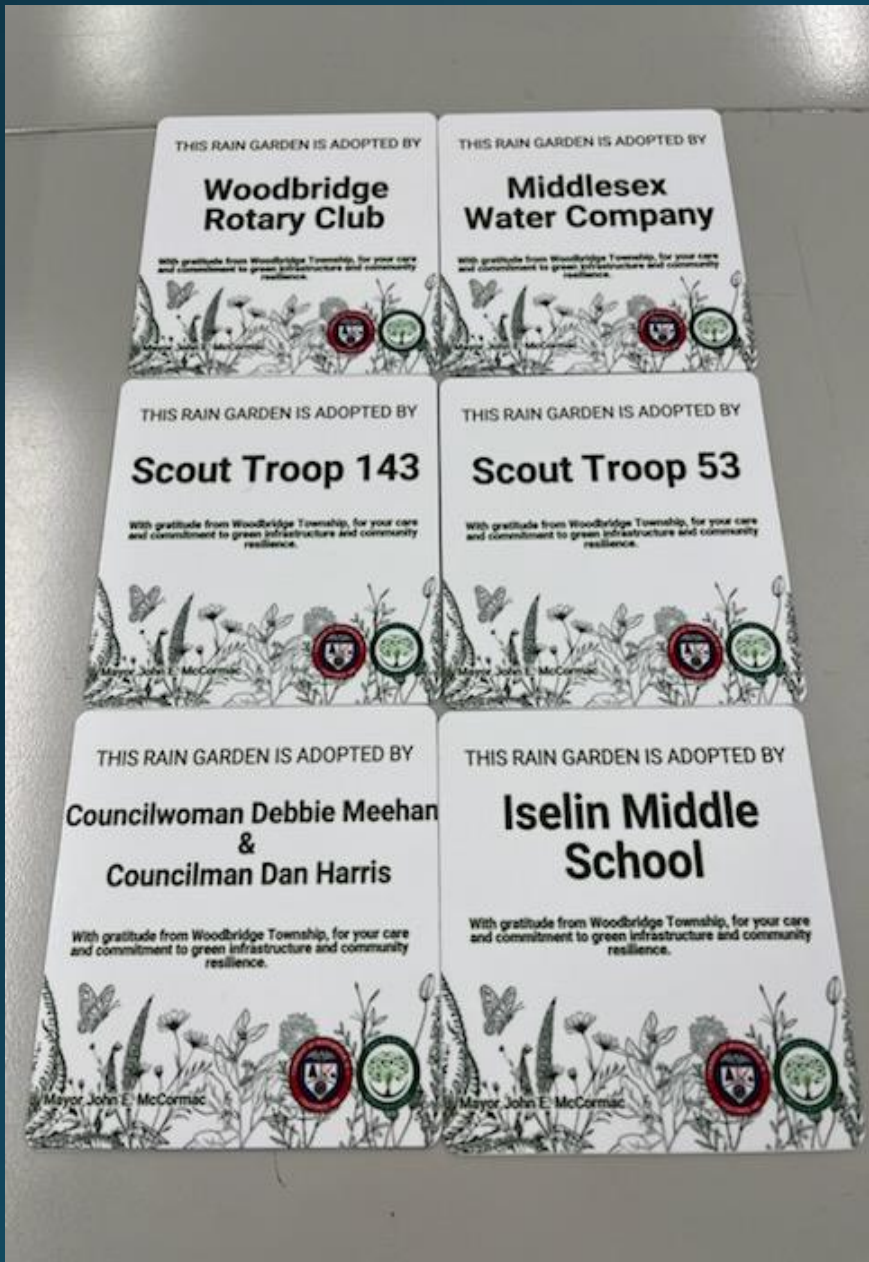
--

Supports Public Safety and Community Health

Well-maintained green spaces are safer, more accessible, and more enjoyable for residents. Overgrown vegetation or unsafe conditions in parks and streets can pose hazards, while functional stormwater systems reduce flooding risks



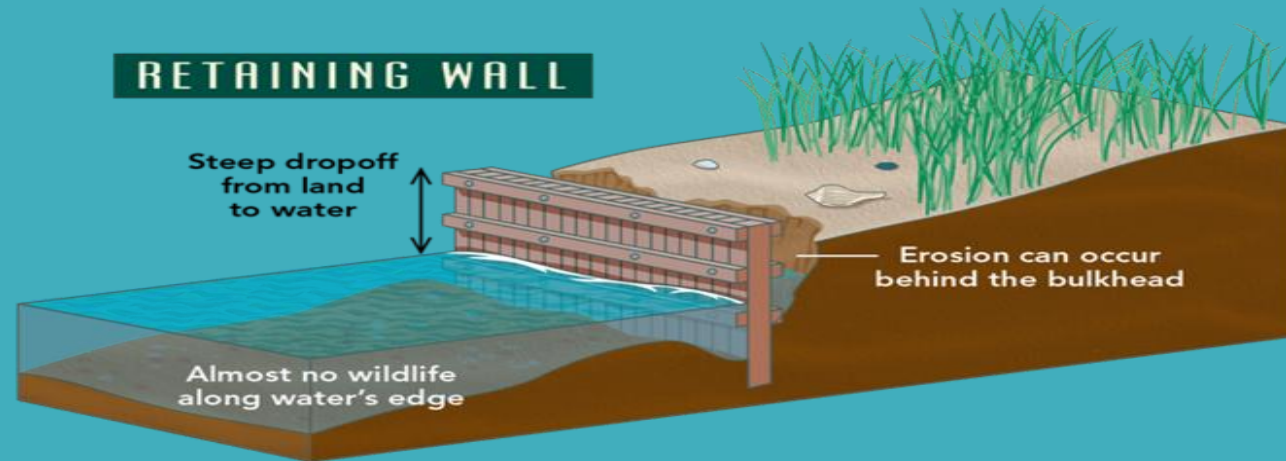




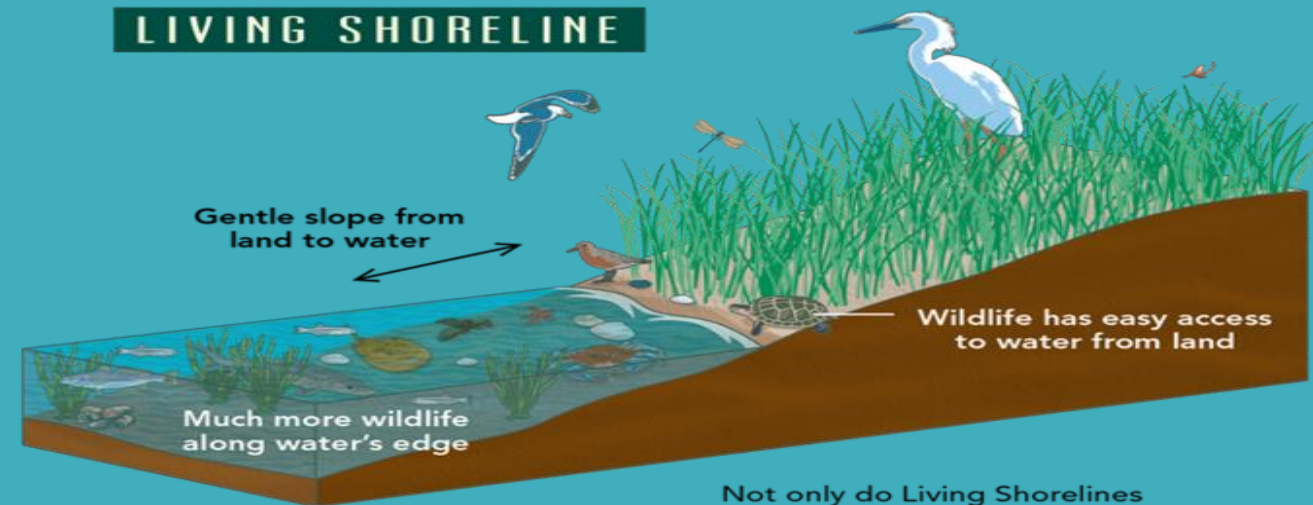




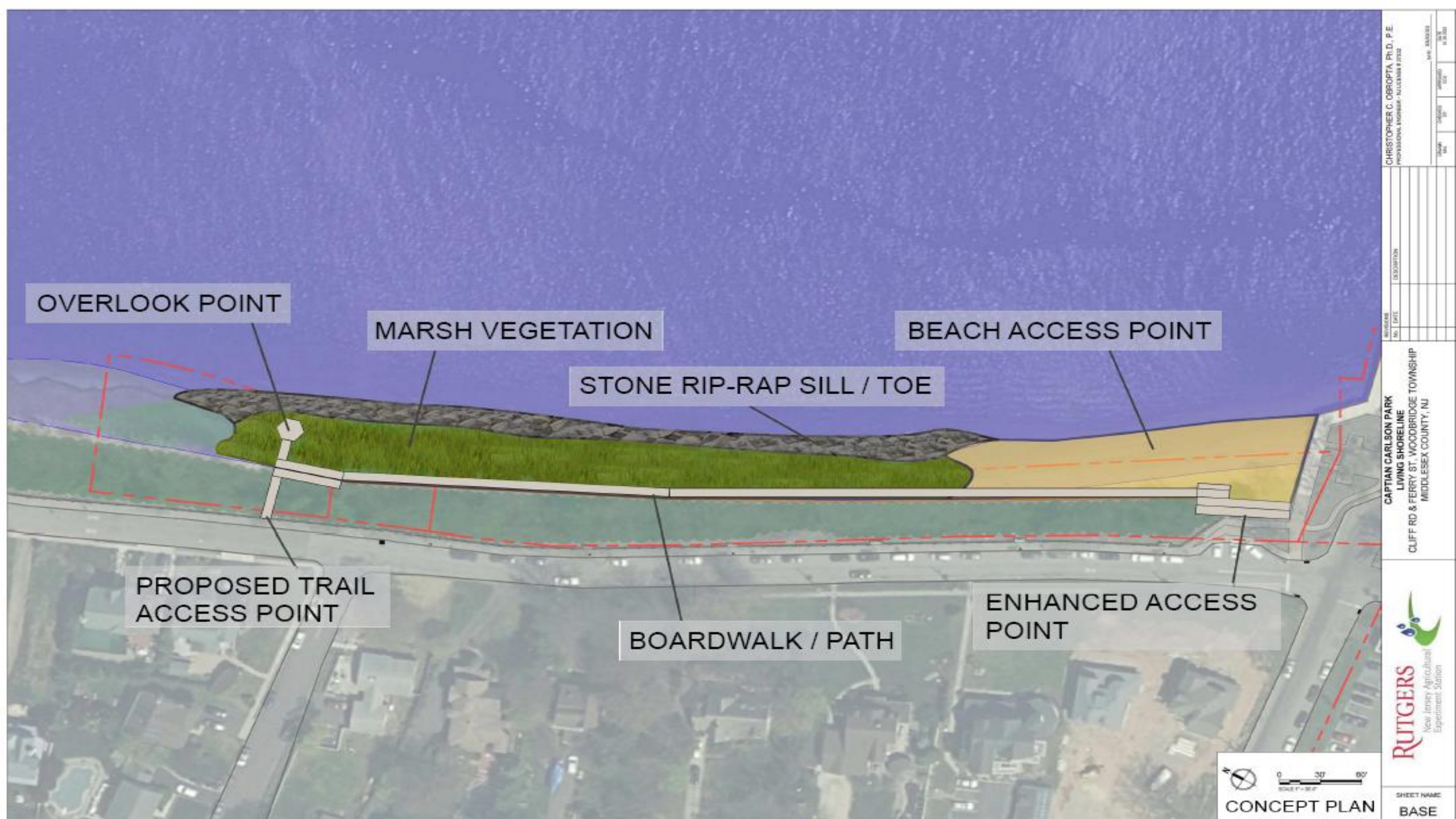
How does maintenance impact planning?



'Hard' infrastructure like retaining walls abruptly severs the ecological connection between the coast and water.



Not only do Living Shorelines defend land against destructive waves, but they also provide crucial habitat for fish and wildlife.



OVERLOOK POINT

MARSH VEGETATION

STONE RIP-RAP SILL / TOE

BEACH ACCESS POINT

PROPOSED TRAIL
ACCESS POINT

BOARDWALK / PATH

ENHANCED ACCESS
POINT

0 30 60'
SCALE 1" = 30'
CONCEPT PLAN

CHRISTOPHER C. OBROPTA, Ph.D., P.E.
PROFESSIONAL ENGINEER - LICENSE # 27022

NO.	DATE	DESCRIPTION

CAPTIAN CARLSON PARK
LIVING SHORELINE
CLIFF RD & FERRY ST, WOODBRIDGE TOWNSHIP
MIDDLESEX COUNTY, NJ



SHEET NAME
BASE



Remembering Super-Storm Sandy

Reshaping Resilience

- The misleading 100-year storm
- ABFE's & PFIRM's
- Restoring the Shore

Managing Expectations



Removing Families from Harm's Way



W
BARRONS





Watson Crampton Neighborhood Plan
Township of Woodbridge

Prepared by Heyer, Gruel & Associates

August 2015

Development of Codes, Ordinance, Regulations,
and Design Standards
&
Permit and Application Process Quality Improvements

For the Township of Woodbridge
Middlesex County
New Jersey

POST SANDY PLANNING ASSISTANCE PROGRAM

New Jersey Department of Community Affairs
Office of Local Planning Services

August 12, 2016

Prepared by:



Heyer, Gruel & Associates

Community Planning Consultants

236 Broad Street, Red Bank, NJ 07701

(732) 741-2900



A Partnership Between Woodbridge Township and Rutgers University Cooperative Extension Water Resources Program





§ 150-41.1 OSC/R Open Space Conservation/Resiliency Zone.

Crampton Neighborhood. Crampton Avenue in the Watson Crampton Neighborhood shall be reduced to an 18-foot wide cartway. All other existing roadways shall be removed and the land allowed to return to its natural state.

[2] Driveways. Driveways do not require curbs, sidewalks or parking lanes.

- (4) Landscaping. Vegetation shall be planted in accordance with the recommendations made in the Flood Plain Restoration Plan prepared by the Rutgers Cooperative Extension, dated January 29, 2016. As determined in that Plan, vegetation shall be planted based on its habitat: Edge, Floodplain Forest, Meadow, Saline Marsh, and Scrub/Shrub. The Plan is incorporated by reference.
- (5) Buffer Requirement. A minimum 12-foot wide buffer is required where the OSC/R zone abuts the adjacent residential zone. The buffer is to be designed to provide a visual buffer to the residential zone and shall be planted with soil-appropriate plants.
- (6) Registration Required. All properties in the OSC/R Zone shall be required to register annually, free of charge. Registration will include initial inspection, and re-inspection from time to time, as may be necessary. Failure to register within ninety (90) days of the adoption of this ordinance, and each year thereafter, by March 15th, shall constitute a violation in accordance with Section **150-97A(1)** of this Article, carrying a fine of up to \$2,000 a day. A separate offense shall be deemed to be committed on each day during or on which the violation occurs or continues.

§ 150-42 Planned Development.

[Added 12-21-1993 by Ord. No. 93-105]

- A. Purpose. The purpose of these provisions is to provide a range of flexibility within which special land use situations and conditions may be accommodated.
- B. Planned development option. As an alternative to conventional development, the Planning Board may authorize planned developments for areas designated PD on the Zoning Map in accordance with plans and proposals which conform to the requirements of this section. The standards herein establish the limits of discretionary action which may be taken by the

So why does green infrastructure maintenance matter?





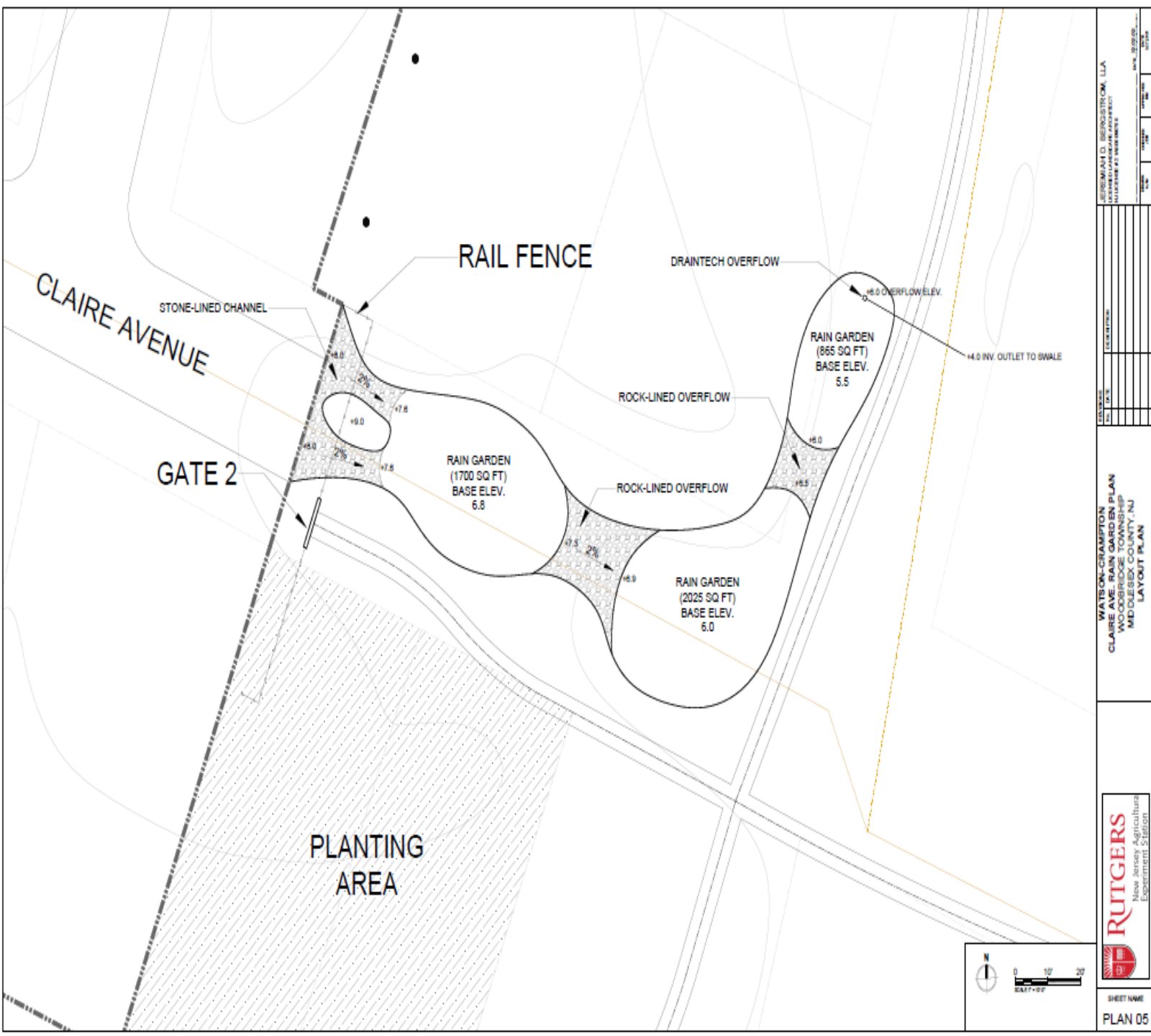
- Better manage runoff through GI where historical development pre-dates existing conditions associated with SWM regulations.







- Green infrastructure collects stormwater from streets, sidewalks, and other hard surfaces before it can enter the sewer system or cause local flooding.
- By reducing the amount of stormwater that flows into the Sewer System, green infrastructure helps prevent storm sewer overflows and improves the health of local waterways.



NO MOWING

WOODBIDGE TOWNSHIP OPEN SPACE CONSERVATION/RESILIENCY ZONE



This land has been designated by Woodbridge Township and the State of New Jersey as open space and is being managed to restore the ecological function of the existing floodplain. This natural landscape increases your community's resiliency to flooding and other climate change impacts.

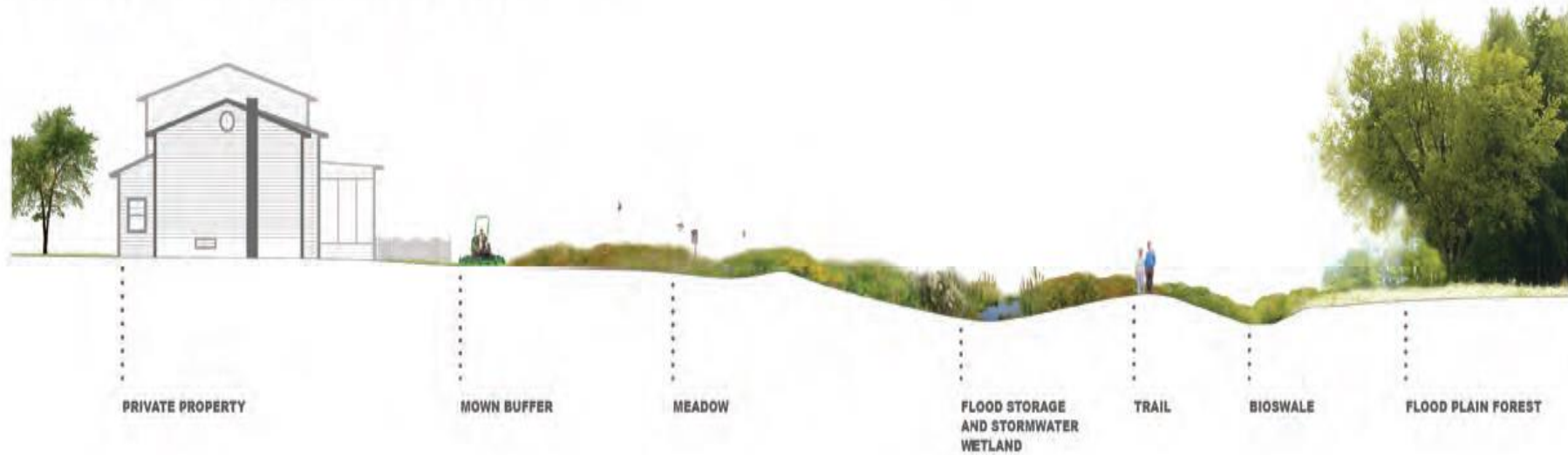


RUTGERS

Mayor John E. McCormac
 Produced by Rutgers Cooperative
 Extension in partnership with
 Woodbridge Township.



LOW-MAINTENANCE MANAGEMENT ZONE:



RESTORATION ZONE:





Open Space Conservation / Resilience Zone

- More stringent regulations within specific high hazard areas
- Acquisition and relocation
- Modifying / retro-fitting
- Better management of storm water run-off
- Preserve and enhance natural floodplain functions
- Providing self-help to property owners
- No new construction

Keeping SWM maintenance on the mind...



Only Rain Goes Down the Storm Drain Campaign

In streams suspended solids can reduce visibility and absorb light, which can increase stream temperatures and reduce photosynthesis.

Woodbridge Township Sustainable Jersey



Woodbridge Health Task Force

The role of the Woodbridge Health Task Force is to identify local public health concerns in relation to equity, public education, lead-use planning and control, reproductive justice, environmental management, housing, infrastructure investment, transportation, and community development. The purpose of signs and green signage is to identify safety and sustainable development.

5 HIGHLY RANKED HEALTH RELATED ISSUES THAT SURFACED DURING THE LOCAL HEALTH ASSESSMENT PROCESS

1. Mental Health
2. Aging
3. Persons without Health Insurance
4. Wellness and Aging & Access to Environmentally Friendly Equitable Transportation
5. Vulnerable, Underserved, and/or Disproportionately Impacted Population

Give Us Your Thoughts!
Take the Community Health Survey Here



Closing Thoughts – Maintenance Matters



Exploring new approaches to solving old problems



Preserve, Restore, & Recreate



Filter & absorb floodwaters



More readily able to rebound after storm events



Protect human life and property and increase public awareness



Green Purchasing

Tracey Woods, Sustainable Jersey



Why Green Purchasing?

Green Purchasing is the coordinated purchasing of goods and services to minimize impacts on human health and the natural environment.

A simple first step is to purchase products made from recycled content that are themselves recyclable.

GREEN PURCHASING moves beyond recycled materials and takes into consideration:

- The raw materials, including energy and water; used to manufacture products
- The production process itself
- The packaging and distribution method
- The distance of transport and proximity of production



Benefits of Green Purchasing?

Protect the Environment

- Green products eliminate waste, reduce hazardous toxins in landfills and use efficient manufacturing processes

Save Money

- Reducing and reusing products means less purchasing and lower costs

Protect Human Health

- Green products eliminate exposure to corrosive or irritating materials containing toxic compounds that can contribute to serious health effects to humans and damage to the environment

Conserve Natural Resources

- Green products promote conservation of nonrenewable resources, protect water quality, conserve water, and support sustainable forestry practices

Reduce Greenhouse Gas Emissions

- Energy efficient products and production practices minimize greenhouse gas

Support Sustainable and Healthy Communities and Social Structures



Green Purchasing Actions

Municipal Program

Green Purchasing Policy (5-10 pts)

- The Green Purchasing Policy should outline standards and procedures for selecting products based on environmental criteria

Green Cleaning Products & Motorized Cleaning Equipment (5-15 pts)

- Must meet national certification standards and meet minimum % of purchase requirements
- Extensive list of cleaning supplies and motorized equipment like floor cleaners & vacuums

Recycled Copy Paper (5-15 pts)

- Copy paper must contain 30% Post Consumer Recycled Content

Green Maintenance Equipment and Materials (10 pts)

- Document purchases that demonstrate a commitment to the purchasing of green maintenance equipment and materials



Green Purchasing

Nationally Recognized Green Certification Programs

- Sustainable Jersey relies on national certification programs that use scientific research & technical guidance to certify products and services that meet rigorous standards.
- Actions focus on expanding the purchasing of products with both post consumer and pre-consumer recycled content will rely on the US.EPA [Comprehensive Procurement Guideline](#)





When “green” is not Green

Want to purchase
“green” copy
paper



- Best option to search vendor for 30% post consumer recycled content copier paper
- NOT company’s “green paper” designation
- One major office supply company has their own “green” designation and copy paper labeled sustainable may NOT be 30% PCRC



Additional Sustainable Jersey Green Purchasing Resources

Buy Electricity From A Renewable Source

procuring energy contracts for municipal facilities with enhanced renewable energy content

Energy Efficiency for Municipal Facilities

energy efficiency upgrades to facilities

Green Fleet Purchasing Policy

establishing a fleet electrification policy

Green Grounds & Maintenance Policy sustainable maintenance of municipal groundskeeping policy

Municipally Supported Community Solar

establishing Community Solar Automatic Enrollment Programs, action includes procurement guidance

Public Electric Vehicle Charging Infrastructure

procuring EV charging infrastructure

Purchasing Alternative Fuel Vehicles

adding alternative fuel vehicles to municipal fleets

Renewable Government Energy Aggregation

establishing energy aggregation programs for residents

Winter Best Practices to Reduce Road Salt Impacts

reducing harm during road salting



Green Purchasing Actions

School Program

GREEN CLEANING

Green Cleaning Policy & Plan (10 pts)

Green Cleaning Equipment (10 pts)

- Vacuums, bathroom cleaning machines and floor scrubbers/burnishers must meet national standards

Green Cleaning Supplies (10 pts)

- 100% certified green cleaning products in areas occupied by students and staff

Green Cleaning Training & Education Programs (10 pts)

GREEN PURCHASING

Green Purchasing Policy (10 pts)

- Action includes sample green purchasing policy

Recycled Paper Purchase (10 pts)

- At least 25% of copy paper purchased during school year must be 30% PCRC



Purchasing Resource Center

This tool is focused on purchasing key green technologies:

1. Electric vehicles (EVs)/Alternative Fuel Vehicles
2. Electric vehicle supply equipment (EVSE)

NEW! List of BABA Compliant EV Charger Purchasing Options.

[Bit.ly/PurchasingCenter](https://bit.ly/PurchasingCenter)



Sustainable Jersey Purchasing Resource Center
Electric Vehicle Charging Equipment - BETA VERSION

Home Page Reset Filters EV Charging FAQ/Glossary General Information

Charger Type Price Range Purchasing Co-op

Vendor	Charger Type	Purchasing Co-op/Contract	EVSE Details	Pricing	Spec Sheet, Quote	Installation Offered?	Warranty	Safety Features
Vendor name: Troller Electric Point of contact: Brad Denker Preferred contact method: brad@trollerelectric.com or (484) 546-9401	Charger type: Level 2 Charger speed: 80 amp, 19kW	Educational Services Commission of NJ (Formerly Middlesex Regional Educational Services Commission)	Manufacturer: Zerox powered by Noodin Model: AX80 WiFi	Equipment Cost: \$2,900 (MSRP) Please contact us for Discount Pricing.	LINK	Yes	Length of initial manufacturer's warranty: 2 Years Extended Warranty: Contact us for Pricing Warranty Covers: Charging cables, Connectors, Power modules (Parts Only). Warranty excludes: Vandalism, Acts of nature. Operations & Maintenance (Parts & Labor) Warranty is also available upon request. O&M Warranty covers: Parts & Labor Warranty excludes: Vandalism, Acts of nature.	Over-current protection Over Voltage Protection Under Voltage Protection Surge Protection Device Rated for outdoor installation
Vendor name: Troller Electric Point of contact: Brad Denker Preferred contact method: brad@trollerelectric.com or (484) 546-9401	Charger type: Level 2 Charger speed: 48 amp, 11kW	Educational Services Commission of NJ (Formerly Middlesex Regional Educational Services Commission)	Manufacturer: Zerox powered by Noodin Model: AX48 WiFi	Equipment Cost: \$1,990 (MSRP) Please contact us for Discount Pricing.	LINK	Yes	Length of initial manufacturer's warranty: 2 Years Extended Warranty: Contact us for Pricing Warranty Covers: Charging cables, Connectors, Power modules (Parts Only). Warranty excludes: Vandalism, Acts of nature. Operations & Maintenance (Parts & Labor) Warranty is also available upon request. O&M Warranty covers: Parts & Labor Warranty excludes: Vandalism, Acts of nature.	Over-current protection Over Voltage Protection Under Voltage Protection Surge Protection Device Rated for outdoor installation

1 - 100 / 148

Disclaimer: Sustainable Jersey has created the Purchasing Resource Center to serve as a guide for municipalities and schools in New Jersey who are pursuing green transportation technologies. The information provided in this resource should be verified by each user. It is important to note that Sustainable Jersey is not affiliated with any of the vendors listed on this resource, and does not sell any products or services. Sustainable Jersey is a non-profit organization that seeks to empower communities with the tools, training and financial incentives necessary to pursue critical sustainability initiatives. Learn more about [Sustainable Jersey](#).

Program Underwriters



Corporate Sponsors



SHOWCASE YOUR WORK!



SUCCESS STORIES CONTEST



Selected finalists will present
at the Sustainable Jersey Annual Luncheon



Win up to \$2000
awards funded by the PSEG Foundation

KEY DATES



MAY 20, 2026
Information Session
1:00pm-1:30pm



JUNE 22, 2026
Round 1
Submission Deadline



SEPTEMBER 14, 2026
Round 2
Semi-Finalist Deadline



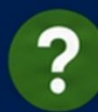
NOVEMBER 24, 2026
Winners announced at
Sustainable Jersey Annual Luncheon



SUSTAINABLE JERSEY PARTICIPATING MUNICIPALITIES ELIGIBLE



APPLY NOW: bit.ly/SJSuccessStoriesContest



QUESTIONS?

Contact Em Boxer, Sustainable Jersey Grants Program Assistant
at boxere@tcnj.edu or 609-771-3196.

2026 NEW JERSEY SUSTAINABILITY SUMMIT

Stay Connected With Us



www.sustainablejersey.com



[@Sustainable_Jersey](https://www.instagram.com/Sustainable_Jersey)



[@SJ_Program](https://twitter.com/SJ_Program) and [@SJ_Schools](https://twitter.com/SJ_Schools)



[@SustainableJersey](https://www.facebook.com/SustainableJersey)



[@sustainable-jersey](https://www.linkedin.com/company/sustainable-jersey)