

2026 NEW JERSEY

# SUSTAINABILITY SUMMIT



# Complete Streets: From Temporary to Transformational

May 15, 2026



*Who has a street in  
their community that  
feels unsafe today?*



# Agenda

Welcome

The Big Picture

What Success Looks Like

Lessons Learned

A Local Perspective

Q&A





# Panelists

James Sinclair, Research Project Manager, Voorhees Transportation Center,

Anya Saretzky, Program Director, Cross County Connection

Lisa Lee, Director Sustainability Programs, EZ Ride

Gabrielle Bennet-Meany, Belleville Green Coordinator, Former President and VP BOE

2026 NEW JERSEY  
**SUSTAINABILITY**  
**SUMMIT**



# The Big Picture: Why Demonstration Projects Matter

James Sinclair, Research Project Manager

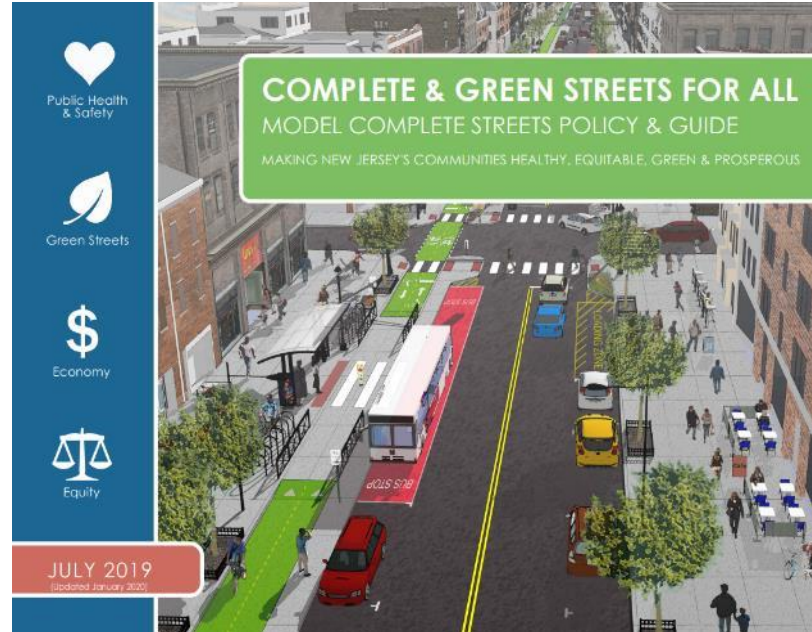


RUTGERS-NEW BRUNSWICK  
Edward J. Bloustein School  
of Planning and Public Policy

Alan M. Voorhees Transportation Center

# NJDOT Bike & Ped Resource Center

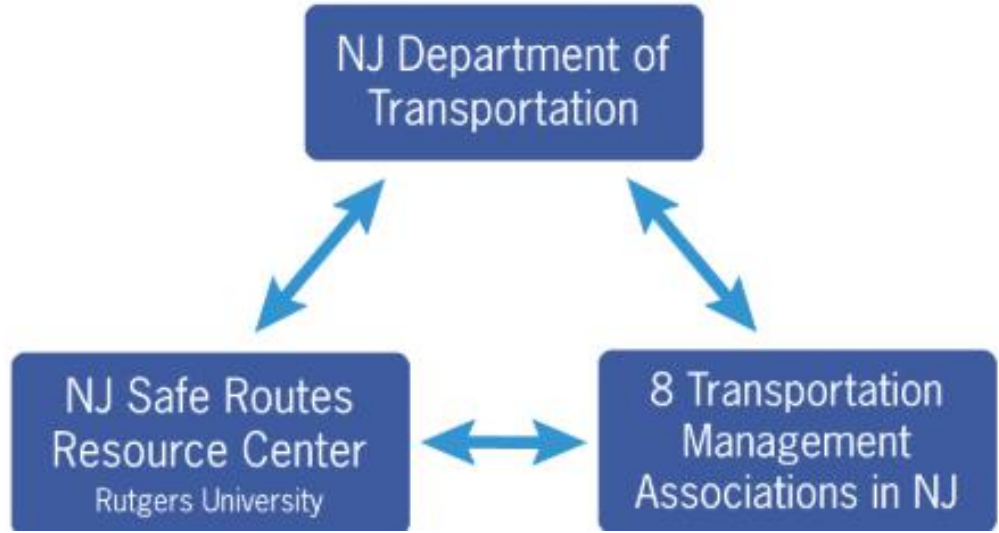
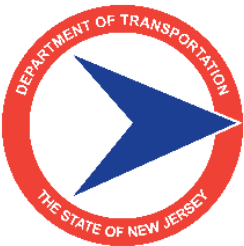
- Research
- Education
- Help Desk



**Other Reports**

- Bicycle Network Plan For Wards 3 and 4** (City of Plainfield, NJ)
- Central Avenue Walkable Community Workshop** (Seaside Heights Borough, NJ)
- State Street & Hamilton Avenue Complete Streets Conceptualization** (City of Passaic, NJ)
- Plainfield: Bicycle Network Plan For Wards 3 and 4 (2023)**  
The City of Plainfield, New Jersey, participated in the 2022-2023 North Jersey Transportation Planning Authority (NJTPA) Complete Streets Technical Assistance (CSTA) Program. This report identifies several recommendations [...]
- Seaside Heights: Central Avenue Walkable Community Workshop (2023)**  
Seaside Heights Borough, New Jersey, participated in the 2022-2023 North Jersey Transportation Planning Authority (NJTPA) Complete Streets Technical Assistance (CSTA) Program. This report identifies several recommendations to [...]
- Passaic: State Street & Hamilton Avenue Complete Streets Conceptualization (2023)**  
In 2022, the City of Passaic sought the expertise of the North Jersey Transportation Planning Authority (NJTPA) Complete Streets Technical Assistance (CSTA) Program to help reimagine and [...]
- Complete & Green Streets Policy** (Borough of Oakland, NJ)
- Complete & Green Streets Policy** (Borough of Dunellen, NJ)
- Vosseller & West Maple Avenue Walkable Community Workshop** (Borough of Bound Brook, NJ)
- Oakland: Complete & Green Streets Policy (2023)**  
The Borough of Oakland, New Jersey, participated in the 2022-2023 North Jersey Transportation Planning Authority (NJTPA) Complete Streets Technical Assistance (CSTA) Program. The NJTPA worked with the [...]
- Dunellen: Complete & Green Streets Policy (2023)**  
The Borough of Dunellen, New Jersey, participated in the 2022-2023 North Jersey Transportation Planning Authority (NJTPA) Complete Streets Technical Assistance (CSTA) Program. The NJTPA worked with the [...]
- Bound Brook: Vosseller & West Maple Avenue Walkable Community Workshop (2023)**  
The Borough of Bound Brook, New Jersey, participated in the 2022-2023 North Jersey Transportation Planning Authority (NJTPA) Complete Streets Technical Assistance (CSTA) Program. This report identifies several [...]

# NJDOT Safe Routes to School Program



- ◆ Research
- ◆ Education
- ◆ Help Desk





# Complete Streets Technical Assistance in NJ



**RUTGERS-NEW BRUNSWICK**  
**Edward J. Bloustein School**  
**of Planning and Public Policy**  
 Alan M. Voorhees Transportation Center

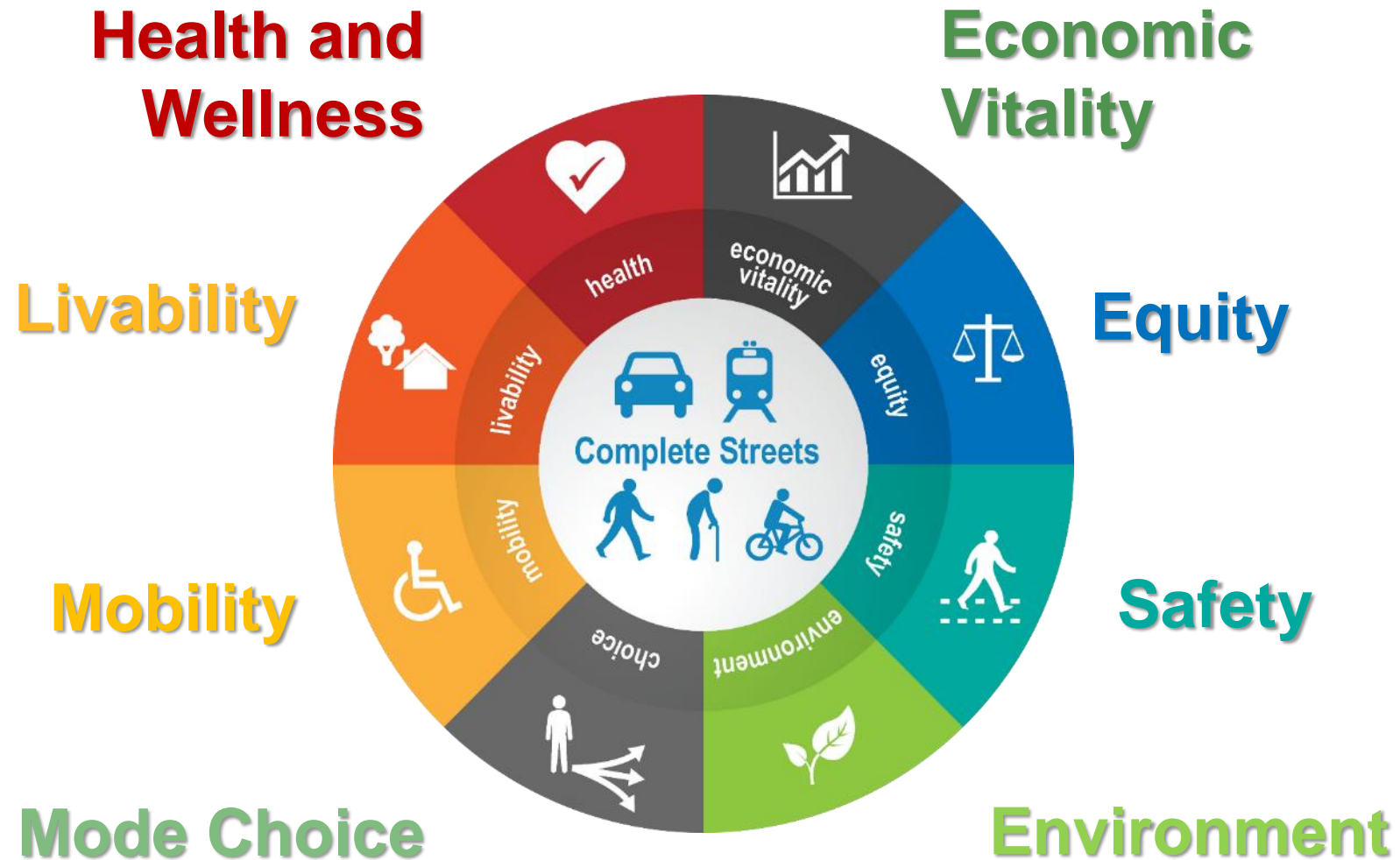


# What are Complete Streets?

1. **Complete Streets** are designed for everyone
2. Design of Complete Streets is **based on local context**
3. Address **quality of life, not just safety**
4. They balance the needs of ...
5. ... **ALL MODES, ALL USERS, and ALL ABILITIES ...**



# Benefits of Complete Streets



**How many crashes do  
you think take place  
annually in New  
Jersey?**



**There is an average of  
280,000 crashes in New  
Jersey each year.**



# Pedestrian and Bicyclist Fatalities as a Percentage of Total Traffic Fatalities

Year	New Jersey	
	Pedestrians	Bicyclists
2023	28%	4%
2024	34%	3%
2025	30%	3%

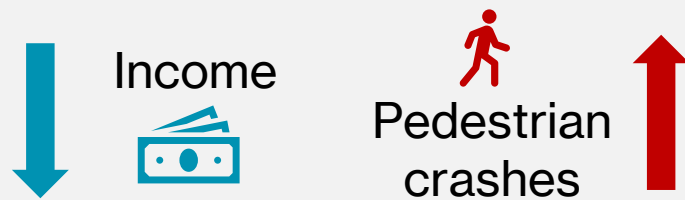
Nationwide in 2023, pedestrians comprised **18%** of all reported traffic fatalities.

NJ categorizes e-bikes and e-scooters as pedestrians. As of 2024, some e-bikes are categorized as “personal conveyance.”

Data sources: NHTSA Fatality Analysis Reporting System; New Jersey State Police - Statewide Fatal Crash Statistics.  
Data accessed March 16, 2026

# Who is most at risk?

## In New Jersey



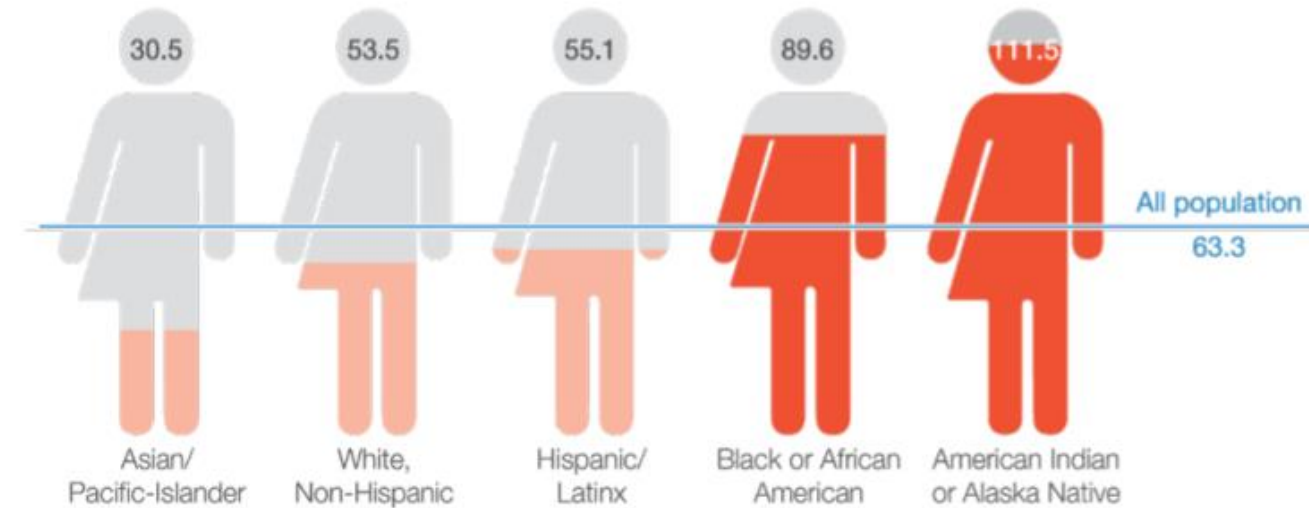
### People over 65

**16.6%** of the population

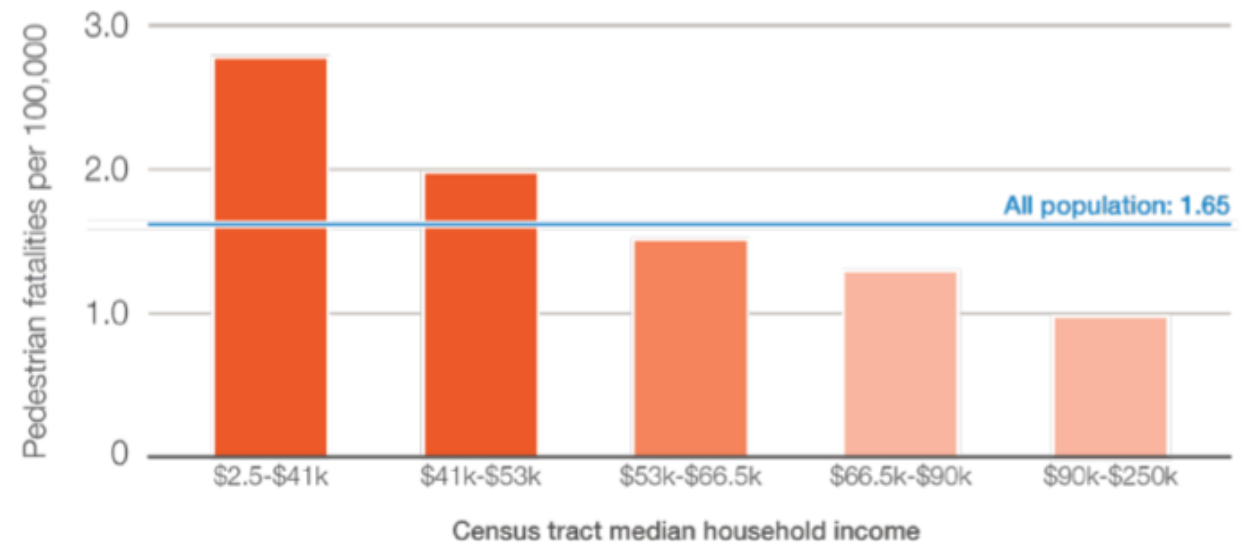
**31.4%** of pedestrian fatalities

Image source: Smart Growth America – Dangerous by Design 2021

## Pedestrian Safety Risk by Race (2010-19)

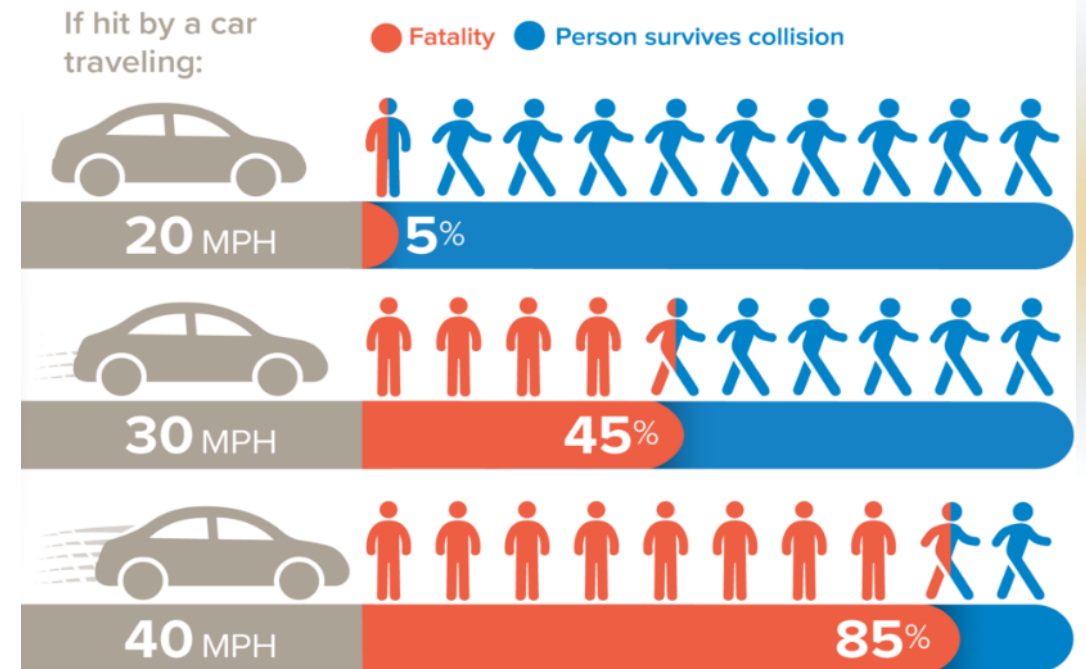
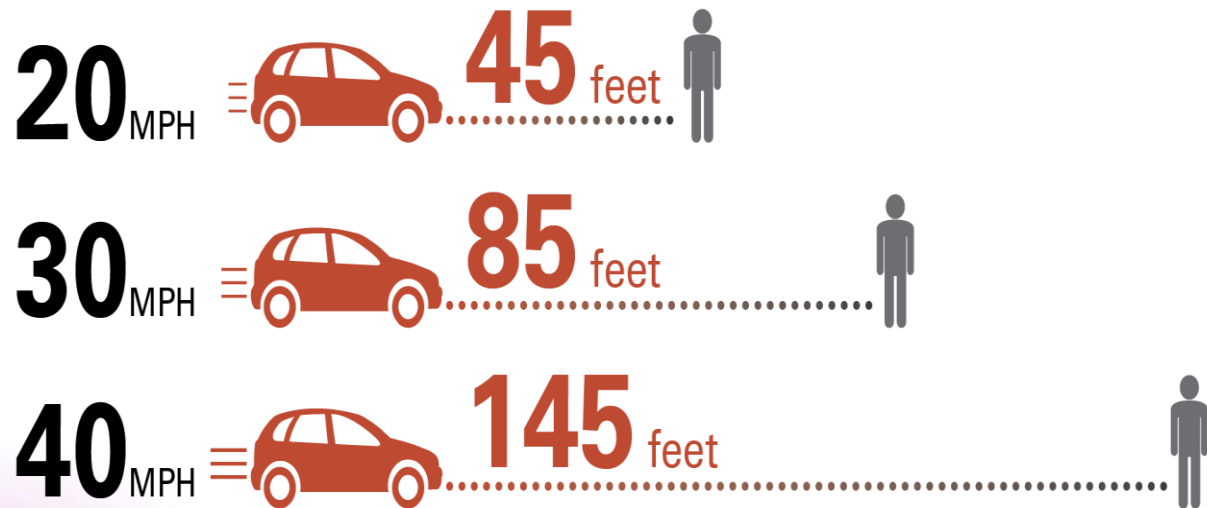


## Pedestrian Fatalities by Household Income (2010-19)



# Driving speed is the critical factor in crash severity & survival

## STOPPING DISTANCE FOR A VEHICLE TRAVELING AT...



# Driving speed & visibility

What a driver can see when traveling at

**10–15**  
MPH



**20–30**  
MPH



**30–40**  
MPH



**45+**  
MPH



# Bad Behavior

Why do people speed?

*Because wide roads make it seem safe for the driver to speed.*



35 SOUTH  
Seaside Park  
Island Beach  
←

35 NORTH  
Lavallette  
Point Pleasant  
↓

WEST TO  
37  
Toms River  
Lakehurst  
↓

SPEED  
LIMIT  
35

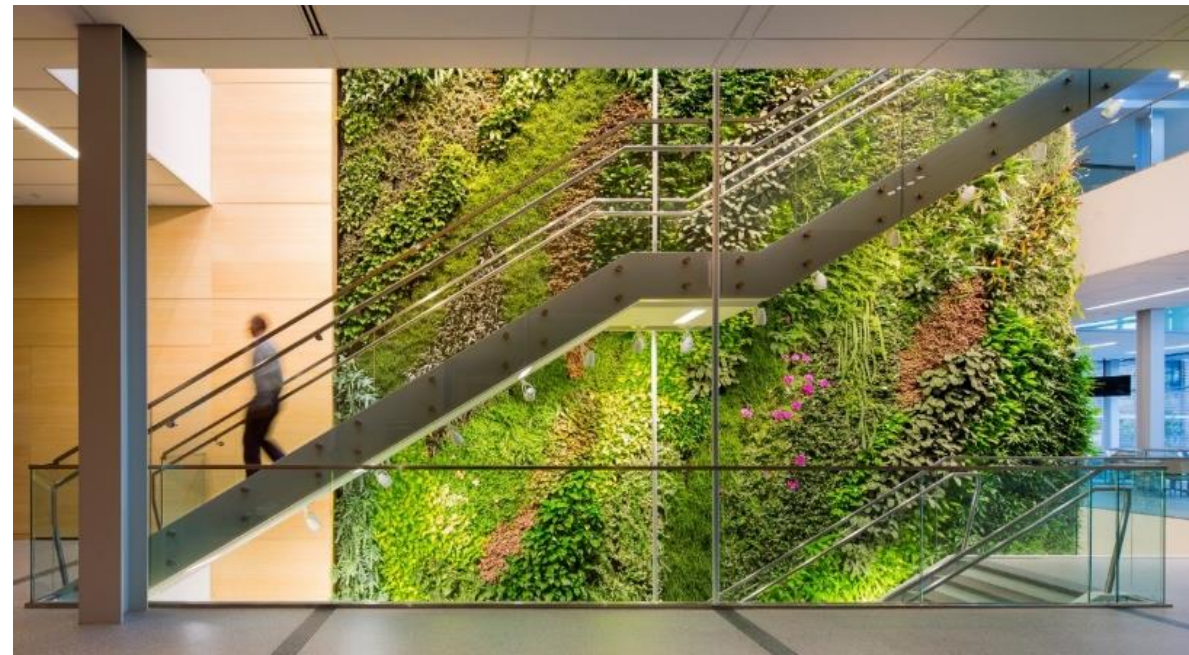
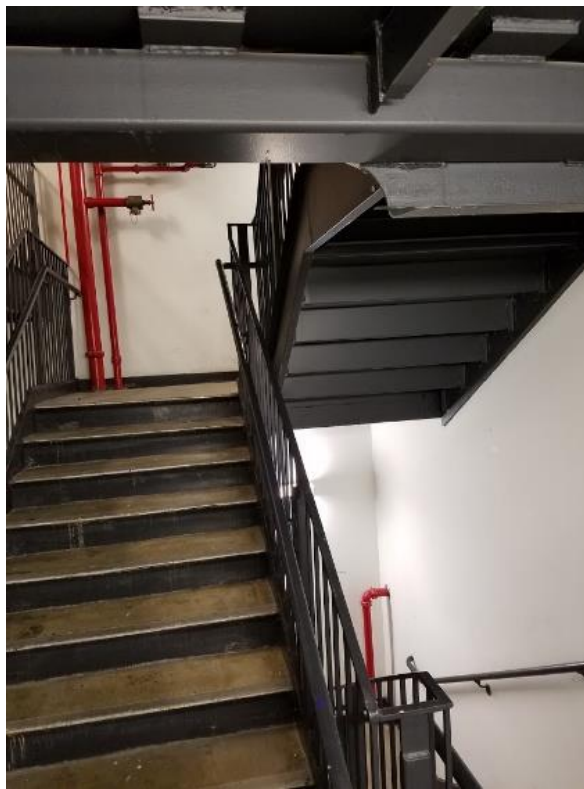


# Building a place you want

- Design affects what we do and how we do it  
(and how happy we are doing it)
- Build for driving...  
....you get driving
- Build for walking and biking...  
.....you get walking and biking



**Design  
affects  
behavior...  
everywhere!**



# Curb Extensions

- An extension of the curb (4-6ft) at intersection or midblock
- Benefits
  - Shortens crossing distance
  - Improves mutual visibility of pedestrians and motorists
  - Reduces vehicle speeds
- Costs
  - Paint and bollards, lower cost
  - Raised curb, moderate cost
  - Green infrastructure, higher cost



# Visibility of Pedestrian in Crosswalk



# Horizontal Speed Control: *Neckdowns / Chicanes*



# Other treatments...

- Medians
- Speed bumps
- Bicycle lanes
- Transit stops
- Traffic circles



# MPO Planning Assistance

---

**NJTPA Complete Streets  
Technical Assistance**

**DVRPC Transportation and  
Community Development  
Initiative**

**SJTPO Complete Streets  
Technical Assistance**



# SJTPO CSTA

- Up to \$15,000 in free direct technical assistance services
- No direct funding is provided
- Approximately 6-9 months in duration (February 2027-December 2027)
- Competitive Process
- One application per municipal local public agency



Source: NJTPA CSTA reports

# Central Avenue Redesign Plan Poised for 2024 Construction in Seaside Heights, Including Bike Lanes

by Daniel Nee October 6, 2023



The northernmost point of Central Avenue in Seaside Heights, N.J., Oct. 2023. (Photo: Shorebeat)

A plan that has spent years in its design stage will remake Central Avenue in Seaside Heights into a picturesque thoroughfare with bicycle lanes, trees, safety features for drivers, and a cohesive aesthetic look.

ADVERTISEMENT

HEADLINES TRENDING VIDEOS

UNCATEGORIZED  
**Talks to Bring Noted Developer's 'Beachfront Oasis' Hotel to Seaside Heights Progress**

POLICE, FIRE & COURTS  
**Island Police Chiefs Meet With N.J. Legislators on Bills to Address Boardwalk 'Chaos,' Crime**

GOVERNMENT  
**First Phase of Seaside Heights Boardwalk Replacement to Start As Soon As Summer Ends**

# Gopal, Houghtaling & Downey Announce \$275,000 Eatontown Greenway Grant

EATONTOWN, NJ—Senator Vin Gopal, Assemblyman Eric Houghtaling and Assemblywoman Joann Downey today announced that the Borough of Eatontown has received a \$275,000 grant from the New Jersey Department of Transportation (NJDOT) Local Aid Infrastructure Fund Program to create a walkable, undeveloped Eatontown Greenway from Wampum Park to Wolcott Park.

## Pallone Secures More than \$1.4 Million to Improve Main Street in Bradley Beach



# One Million Dollars in Grant Funding Awarded to Dunellen

December 22, 2023, 4:05 pm | in

Ocean County	Seaside Heights	Seaside Heights	Central Avenue Safety Improvements	\$824,000.00
Passaic County	Passaic	Passaic	Hamilton Avenue and State Street Improvements Project	\$454,000.00

# Thank you!



## Contact:

NJ Bicycle & Pedestrian Resource Center  
[njbikeped.org](http://njbikeped.org)

Telephone: (848) 932-3714

Email: [bikeped@ejb.rutgers.edu](mailto:bikeped@ejb.rutgers.edu)

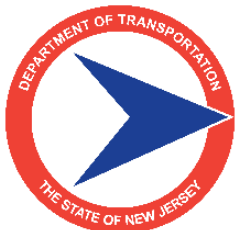


## Contact:

NJ Safe Routes Resource Center  
[saferoutesnj.org](http://saferoutesnj.org)

Telephone: (848) 932-7901

Email: [srts@ejb.rutgers.edu](mailto:srts@ejb.rutgers.edu)



**NJTPA**  
NORTH JERSEY  
TRANSPORTATION  
PLANNING AUTHORITY



**RUTGERS-NEW BRUNSWICK**

**Edward J. Bloustein School  
of Planning and Public Policy**

Alan M. Voorhees Transportation Center

2026 NEW JERSEY

# SUSTAINABILITY SUMMIT



# What Success Looks Like: Case Studies & Best Practices

Anya Saretzky, Program Director





# Cross County Connection Transportation Management Association

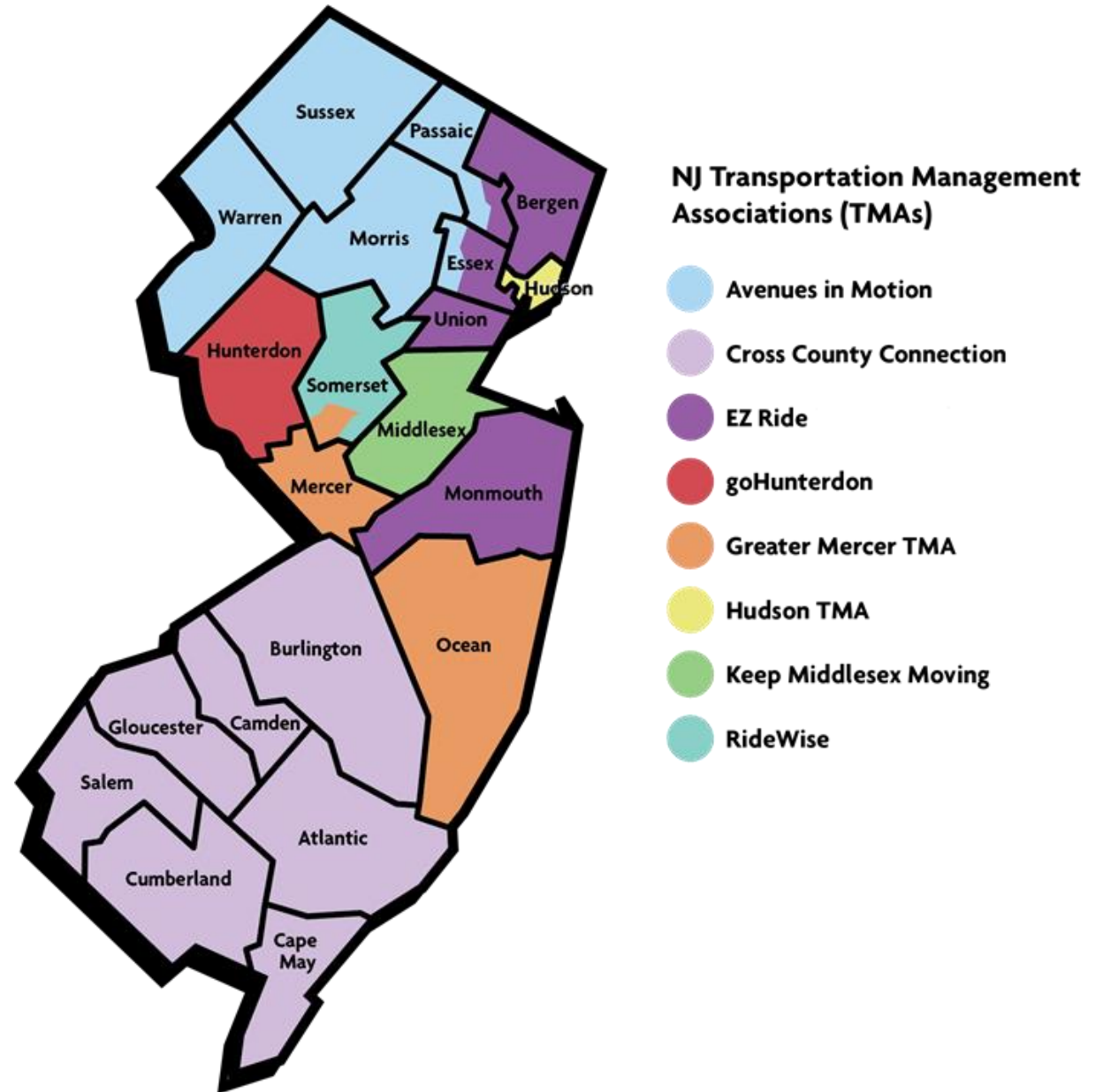
Complete Streets Demonstration Projects

# What is a TMA?

*Non-profit organizations that work with businesses, commuters, local governments, and state agencies to implement programs that reduce congestion and improve air quality.*

## Services

- Bicycle and pedestrian planning
- Education and awareness programs
- Sustainable Jersey assistance
- Shuttles
- Employer commute planning/programming
- Public transit trip planning & travel training
- Carpooling/vanpooling services
- Electric Vehicles



# Our Services



- Bicycle & Pedestrian Planning
  - Road Safety Audits
  - Complete Streets Policy
  - Temporary Demonstration Projects
- Safe Routes to School
  - School Travel Plans
  - Education and outreach
- EV Infrastructure Assistance
- Carpooling & Vanpooling Services
- Public Transit Travel Training
- Shuttle Planning Services
- Grant Assistance

# Complete Streets Demonstration Projects

- Short- or medium -term
- Low cost
- Flexible materials
- Opportunity for effective public input
- Education



# Steps

- ID a project area based on crash history, community concerns, etc.
- ID funding
- Determine length of demo
- Design the intervention(s)
- Collect pre/during speed data and bike/ped counts (*optional*)
- Gather materials
- Plan a safety/mode shift marketing campaign (*optional*)
- Install demo
- Collect feedback
- Uninstall demo
- Make implementation plan



# Evesham Township – Westcott Blvd. Traffic Calming Demonstration Project (Spring 2026)



# Crosswalk & Pedestrian Refuge Island

Wescott Road at Athletic Fields Entrance



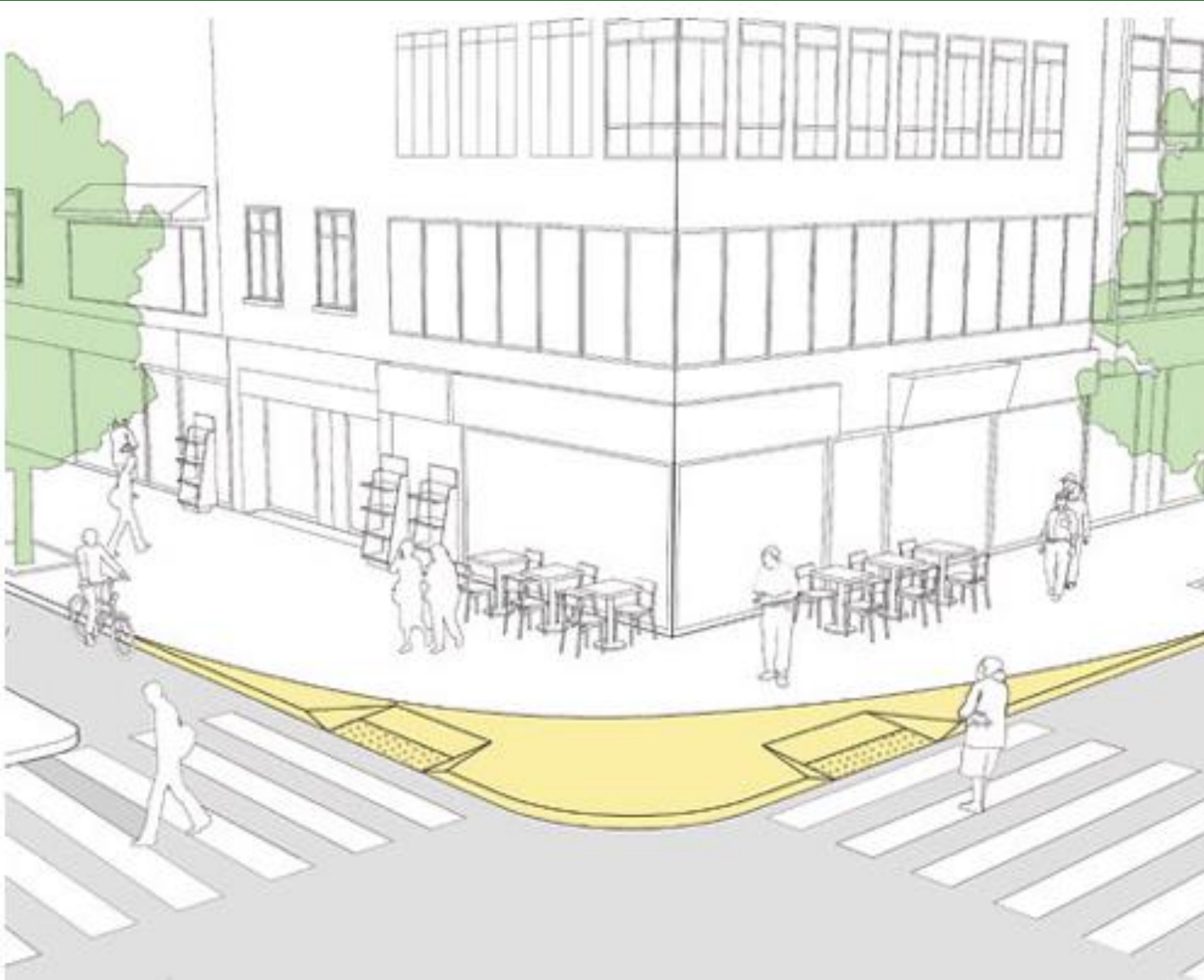
# Curb Extensions

Intersection of Wescott Road and Erindale Road



# Curb Radius Reduction

Intersection of Brick Road and Evans Road



# Pennsville Township – Riviera Drive

## Traffic Calming Demonstration Project (Fall 2025)



# Before

# &

# After



# Speed Data

	Mean Speed (mph) Base	Mean Speed (mph) Temp Demo	Change in Speed (mph)
<b>Location 1</b>	29.6	27.7	-1.9
<b>Location 2</b>	28.8	26.1	-2.7

	85th Percentile Speed (mph) Base	85th Percentile Speed (mph) Temp Demo	Change in Speed (mph)
<b>Location 1</b>	34	31	-3
<b>Location 2</b>	33	30	-3



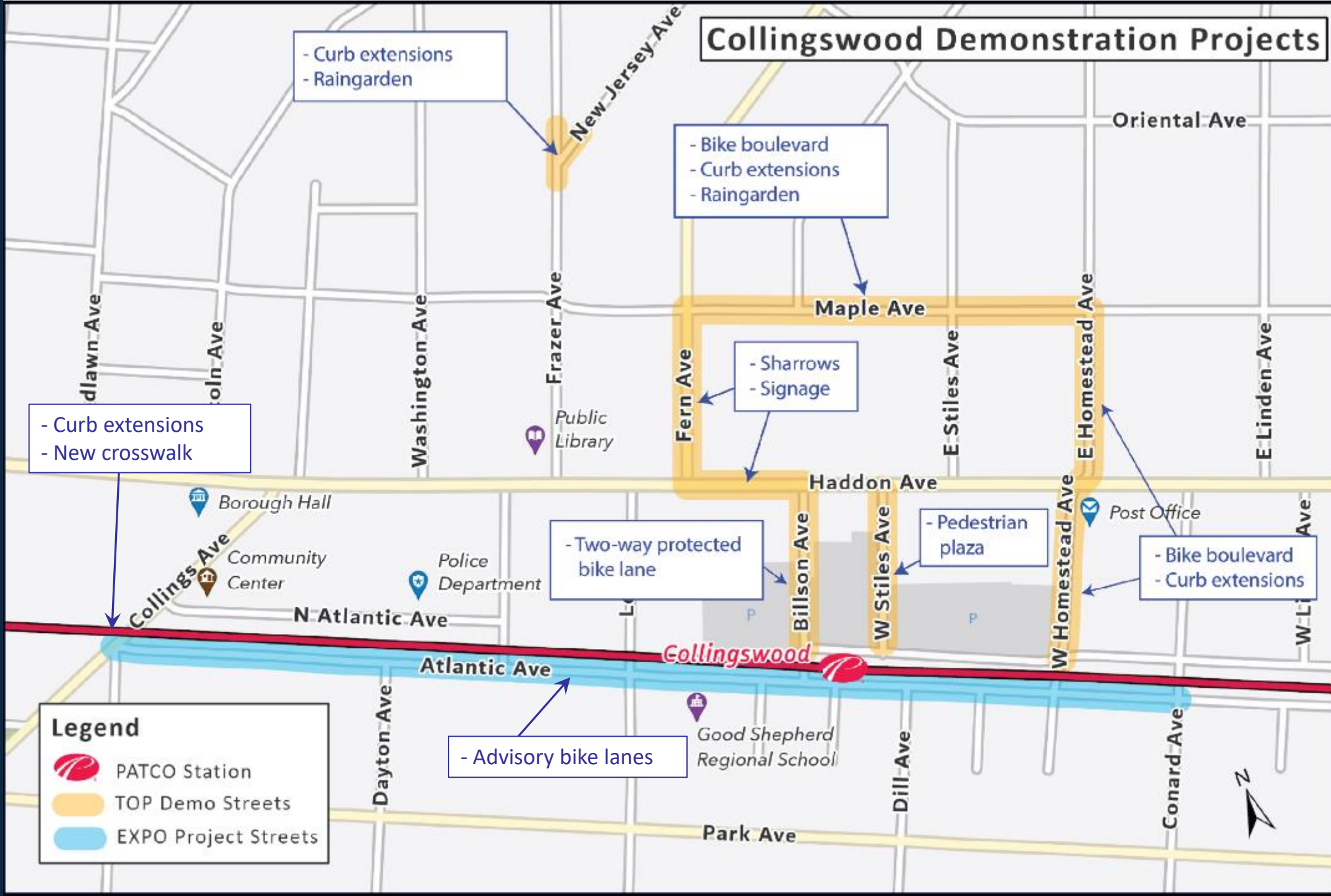
# Voorhees Township – Green Ridge Neighborhood Traffic Calming Demonstration Project (Fall 2023)



# Collingswood Complete Streets Lab 2022



# Collingswood Demonstration Projects



**Legend**

-  PATCO Station
-  TOP Demo Streets
-  EXPO Project Streets



# Maple Avenue Bike Boulevard



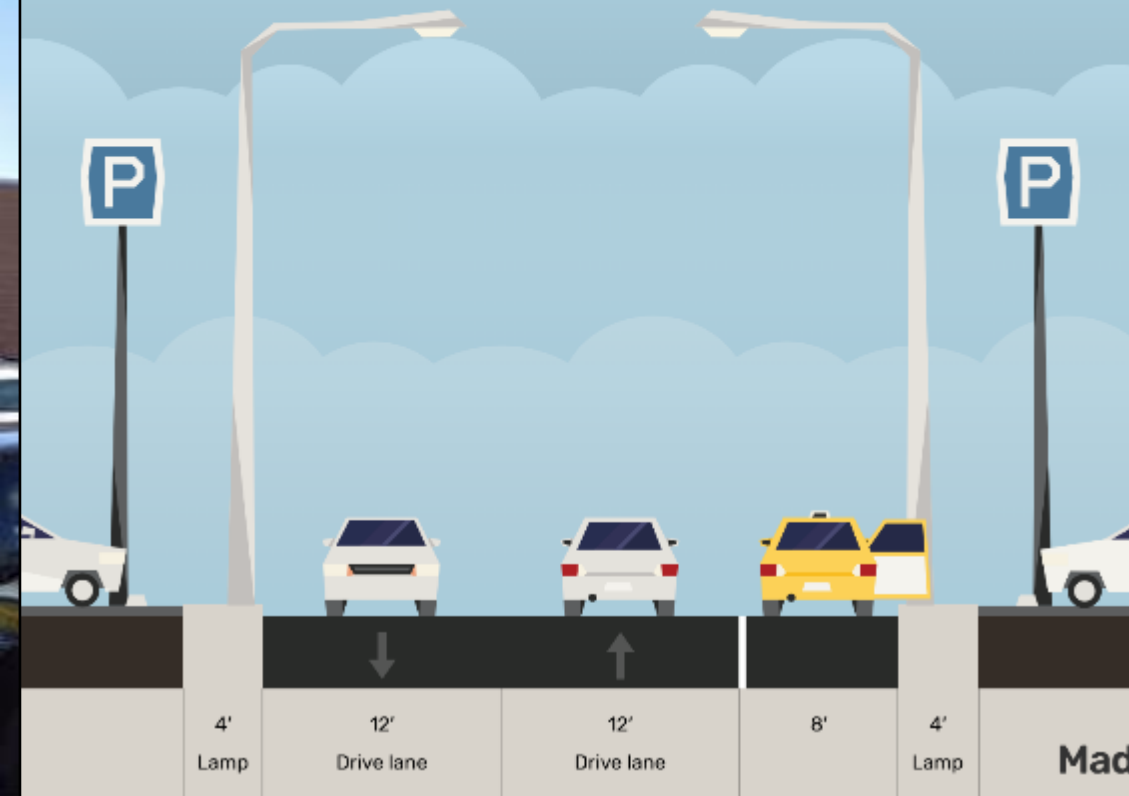
# “Raingardens”



# Billson Ave Protected Bike Lanes

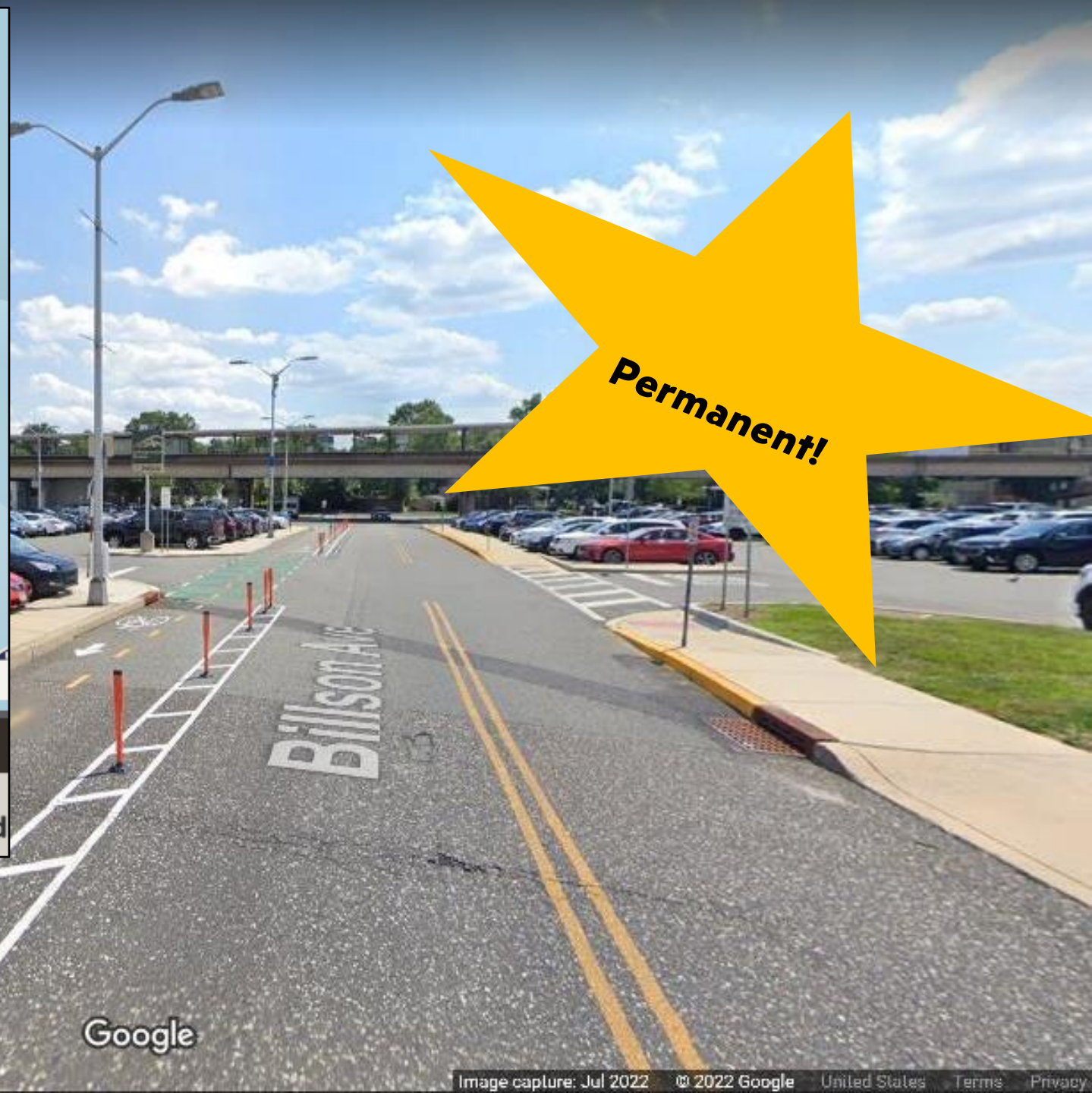
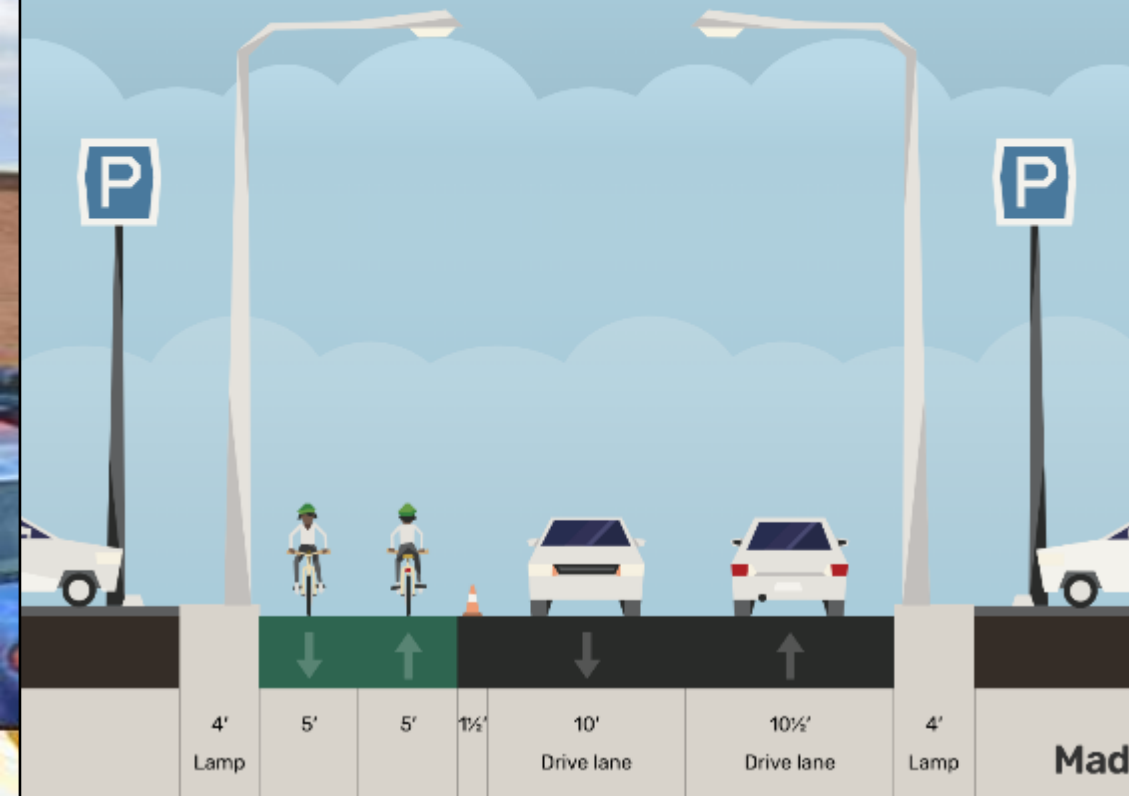


# Billson Ave before



Google

# Billson Ave plan



Google



**Demo  
AND  
Pilot ...**



**Permanent  
Coming  
Soon!**

# Education

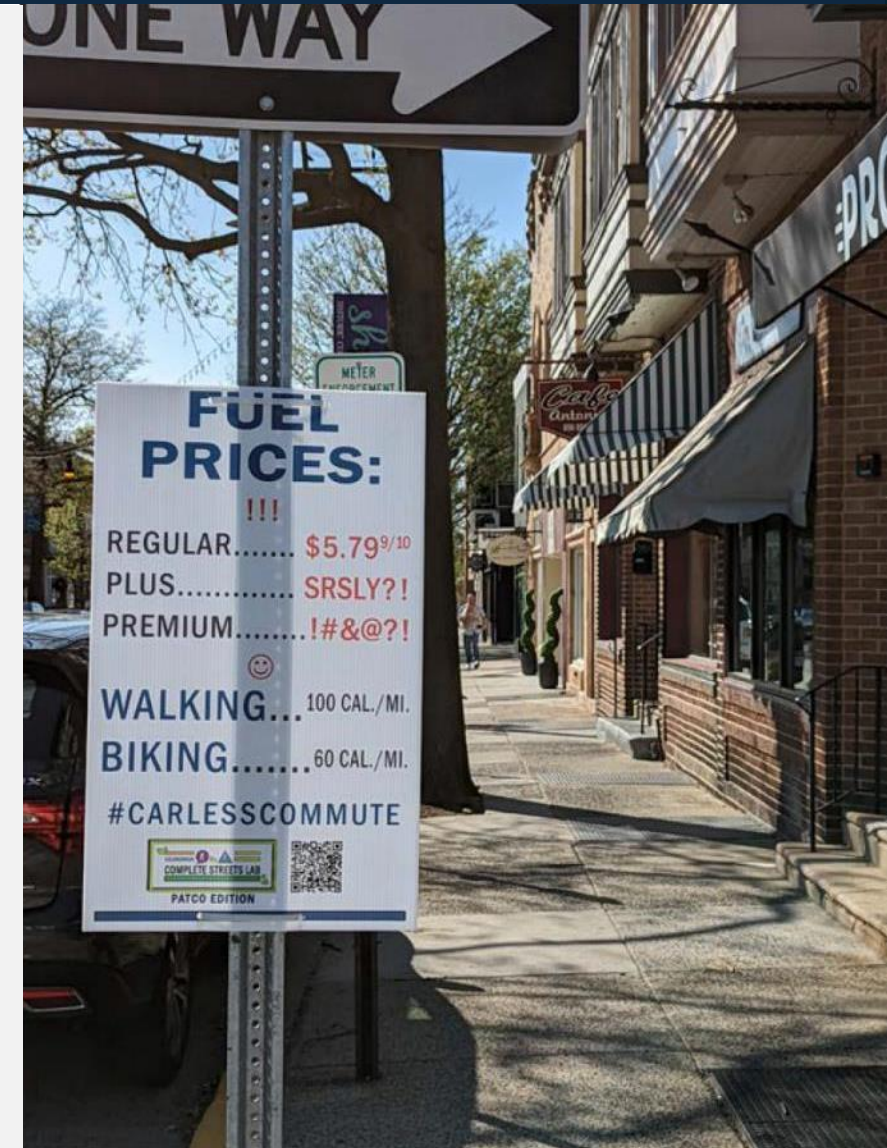


**FACT:**  
**REDUCING 10**  
**MILES OF DRIVING**  
**PER WEEK WOULD**  
**ELIMINATE 500**  
**POUNDS OF**  
**CO<sub>2</sub> EMISSIONS**  
**PER YEAR**

**#CARLESSCOMMUTE**



PATCO EDITION



## FUEL PRICES:

!!!  
REGULAR..... \$5.79<sup>9/10</sup>  
PLUS..... SRSLY?!  
PREMIUM..... !#&@?!  
😊  
WALKING... 100 CAL./MI.  
BIKING..... 60 CAL./MI.

#CARLESSCOMMUTE



PATCO EDITION





**IT IS A  
10 MINUTE WALK  
3 MINUTE BIKE  
RIDE TO PATCO**



SCAN HERE  
FOR QUICKEST  
ROUTE



PATCO EDITION

# Results

- 10% increase walking
- 27% increase biking
- 73% would walk and bike more if permanent
- 121,000+ social media impressions

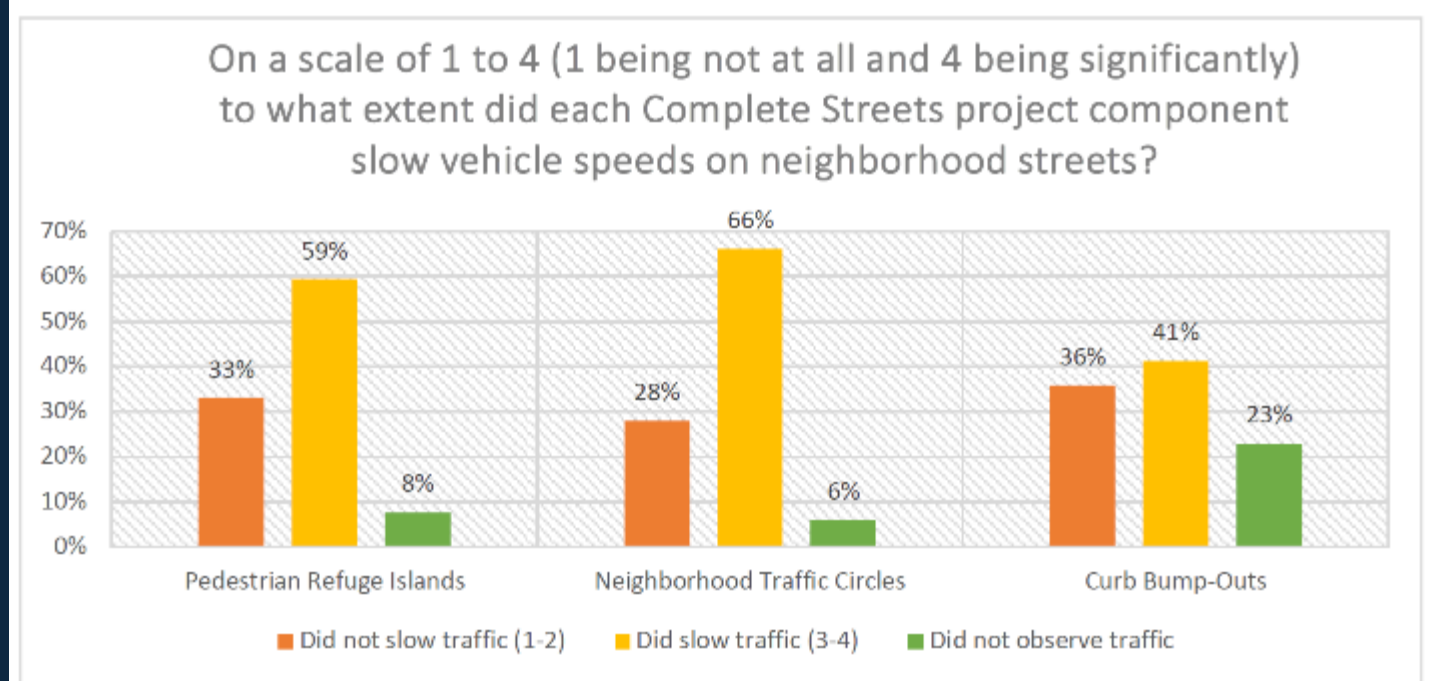


Figure 6: Effect on Vehicle Speeds

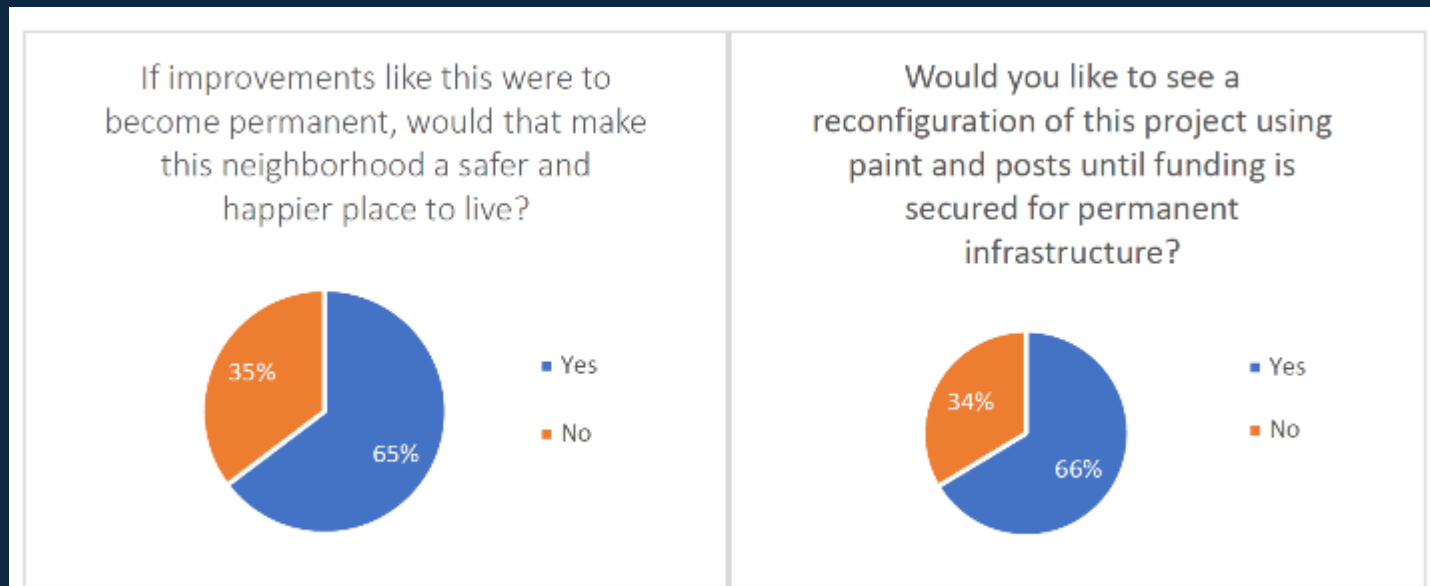
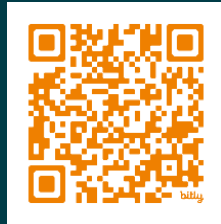


Figure 7: Safer and Happier Place to Live

Figure 8: Pilot Project

# Lessons Learned

- Assemble a strong team
  - Green Team, police, public works, TMA, volunteers, etc.
- Communicate with the public early and often
- Honor feedback.....
- ...But don't be dissuaded by the nay-sayers
- Review standards
  - MUTCD
  - AASHTO
  - NACTO
  - NJDOT Complete Streets Design Guide
- Measure! Measure! Measure!
- Engineer review
- Chalk it out



NJDOT  
Design Guide



# Complete Streets Demonstration Library



For more information on  
how to apply and how to request materials,  
visit: [sjtpto.org/demolibrary/](http://sjtpto.org/demolibrary/)

For North Jersey:  
[njtpa.org/  
demonstration-  
library](http://njtpa.org/demonstration-library)

For South  
Jersey:  
[sjtpto.org/  
demolibrary/](http://sjtpto.org/demolibrary/)

---

# Demo Funding Sources

- SJ Sustainable Communities Grant Program (ACE) - July 13
- Travel Demand Management Program (CCCTMA) - Sept. 18
- Complete Streets Technical Assistance (SJTPO) - coming soon
  - Complete and Green Streets for All Guidance
  - Bicycle Network Plan
  - Complete Streets Community Workshop Walk Audit
  - Temporary Demonstration Project
- Travel Options Program (DVRPC) - current round closed
- EXPO Experimental Pop-Ups Program (DVRPC) - rolling



---

# Permanent Implementation Funding Sources

- State (NJDOT)
  - Municipal Aid
  - Bikeways
  - Safe Streets to Transit
  - NJ Transportation Infrastructure Bank
- Federal
  - NJDOT Transportation Alternatives (TA) Set-aside Program
  - NJDOT Safe Routes to School (SRTS) Infrastructure Program
  - USDOT Safe Streets and Roads for All Grant Program
  - FHWA ATIIIP Active Transportation Infrastructure Investment Program (ATIIIP)
  - SJTPO/DVRPC Congestion Mitigation & Air Quality Improvement Program (CMAQ)

2026 NEW JERSEY

# SUSTAINABILITY SUMMIT



# Lessons Learned: Pitfalls to Avoid & Smart Strategies

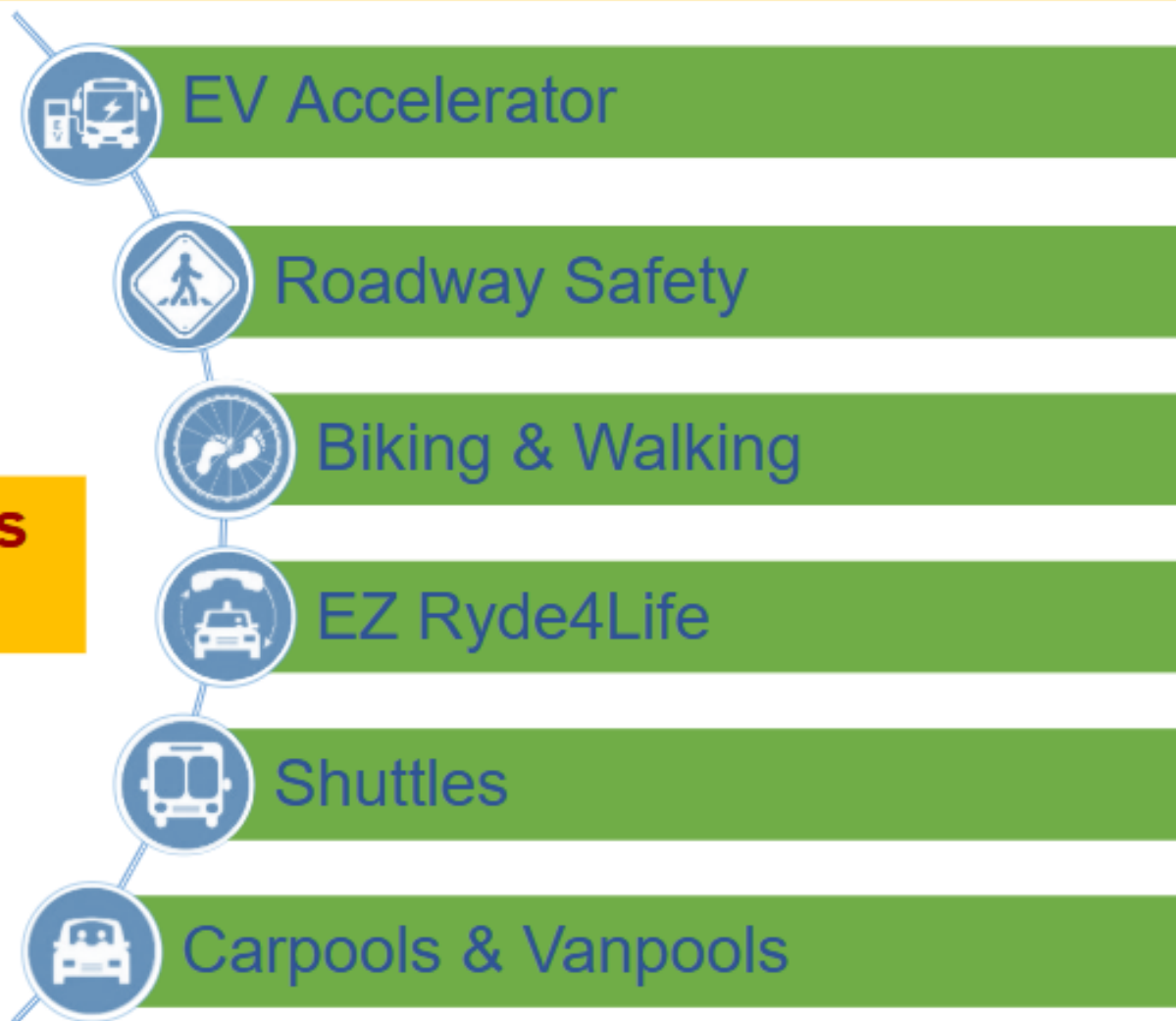
Lisa Lee, Director of Sustainability



# About EZ Ride



**Meeting Your Community's  
Mobility Needs**





# Common Challenges

- Proving success via performance metrics
- Funding constraints
- Equity & implementation gaps
- Misinformation >> Opposition from stakeholders
- Pushback from Maintenance & Emergency Response





# Mistakes Municipalities and School Districts Face



- Poor preparation and communication
  - Failure to define a clear vision and goals
  - Need for stakeholder buy-in: Council, BA, teachers, residents, DPW
- Underestimating the complexities of implementation
  - Scheduling (rain date, construction), approvals, metrics, maintenance
- Failing to secure funding for the project or underestimating cost
- Neglecting community impact – need to inform neighbors, transit, parking, noise, traffic



# How to Navigate Pushback and Logistical Barriers

- Secure road owners approval first – Local > County > State
- Survey residents before and after the project
  - The pre-survey results will show the need
- Arrange for Police to close roads & DPW to help
- Emphasize the project's goals
  - Improve pedestrian safety
  - Promote community engagement
  - Activate and make public spaces safer

**City of Passaic  
Asphalt Art Project Survey**

Mayor Hector C. Lora invites you to share your thoughts!  
We welcome your feedback on the new art and safety measures at Monroe St. & Columbia Ave.

**Project Features**

- Intersection Mural
- High Visibility Crosswalks
- Painted Curbs & Curb Extensions
- Reflective Delineators to prevent illegal parking

**Benefits**

- Reduced Vehicle Speed
- Shortened Crosswalks
- Protected Street Corners
- Civic Engagement
- Community Pride

Scan Our Survey!

**Partners & Organizations**



# Tips for Planning

- Metrics: prep and post-project
- Need engineer design approval
- Recruit photographer, videographer and drone
- Bloomberg Asphalt Art:  
<https://asphaltart.bloomberg.org/guide/>
- Tactical Urbanism:  
<https://tacticalurbanismguide.com/>
- Safety Study:  
<https://assets.bbhub.io/dotorg/sites/43/2022/04/Asphalt-Art-Safety-Study.pdf>
- Common Metrics:  
<https://asphaltart.bloomberg.org/common-metrics/>

Safety/Mobility Metric	Method	Before	After
Change in Vehicle Speed	Speed study		
Change in Traffic Count	Speed study		
Change in Driver Stop Compliance	Observations		
Car Traffic Volume	Speed study		
Foot Traffic Volume	Observations		
Change in Crashes	Police reports		
Change in Safety Perception	Survey		
Change in Visitor Mode share	Survey		
Change in Cyclists	Observations		
Change in e-scooters	Observations		



# Tips for Communications

- Inform the public of the project purpose
- Inform neighbors a week ahead of road closures
- Promo on town webpage, SM
- Emphasize project benefits
- If the road has transit stops, inform them early and set up a detour
- Set up a stand to explain the project and get feedback

**Township of West Orange and EZ Ride**  
**Pop-Up Bike Lane & Free Bike Skills Courses**  
May 1 - May 2, 11 am - 5 pm



**Join us at Redwood Elementary!**

EZ Ride and West Orange are creating a temporary bike lane on Woodland Avenue between Forest Ave. and Pleasant Valley Way (shown in green) that conforms to NJ guidelines on May 1-2 to make it safer for students to ride to school! Narrowing roads slows drivers and makes it safer for everyone. There will be a 1.2 mile route for the community to ride (shown in blue), free Safe Bike Skills sessions, and a Learn to Ride workshop. Come ride in the bike lane and experience safer biking! Parking is available in the Redwood School front lot.

**Bike Skills Requirements**

- Ride with a bike with proper tires
- Ride with a bike in good working order
- Helmets are required
- Riders must wear proper safety gear, including reflective clothing and reflective tape
- Parents must sign and submit waiver form before session
- Sessions limited to 12 participants

**\*\*First come first serve basis\*\***

**Saturday, May 1, 2021**

Bike Skills Session 1: 10:00-11:15 am	Learn to Ride Session: 10:00-11:15 am
Bike Skills Session 2: 1:00-2:15 pm	Bike Skills Session 4: 2:30-3:15 pm
Bike Skills Session 3: 3:00-4:15 pm	Bike Skills Session 5: 4:00-5:15 pm

**Sunday, May 2, 2021**

Register for a Free Bike Class: <http://bit.ly/ws/cxYQ>  
Volunteers Needed (Adults & Students 13+). Sign up at: <http://bit.ly/ws/cy9B>





# Tips for Project Execution

- Avoid spring, track the weather – set a rain date
- Get the community involved and use a sign in to get emails to send the survey afterwards
  - School students: offer community service hours
  - Green Team
  - Safety advocates
- Inspect road – don't put designs where cars drive or where water pools after rain
- Sweep/power wash road so paint adheres better
- Setup a supply station and coordinator, takeout trays
- Apply multiple coats of paint and sealer

**ezride Volunteer Paint Day**  
**Día de Pintura para Voluntarios**

Join Mayor Hector C. Lora, City of Passaic, and EZ Ride  
for a colorful community event  
Únete con Alcalde Hector C. Lora, la Ciudad de Passaic, y EZ Ride  
para un colorido evento comunitario

**APRIL 20th, 2024**  
**Columbia Avenue & Monroe Street**  
8am - 5pm

Rain date:  
April 27, 2024  
Día de lluvia:  
Abril 27, 2024

Únase a nosotros para un día de pintura voluntario lleno de diversión para hacer esta intersección hermosa, más segura y para apoyar a nuestra artista local, Angélica Otero Vargas. Música, bocadillos y agua estarán disponibles. Por favor regístrate abajo.

Join us for a fun-filled Volunteer Paint Day to make this intersection beautiful, safer and to support our local artist, Angelica Otero Vargas. Music, snacks, and water will be available. Please register below.

Please register so we can plan for snacks/paint supplies.  
Por favor regístrate para que podamos planificar para aperitivos / suministros de pintura.





# Thank you



Lisa Lee

EZ Ride

Director of  
Sustainability

[Llee@ezride.org](mailto:Llee@ezride.org)

201-939-4242 ext. 123



2026 NEW JERSEY  
**SUSTAINABILITY**  
**SUMMIT**



# From Idea to Implementation: A Local Perspective

Gabrielle Bennet-Meany, Green Coordinator and Former BOE President

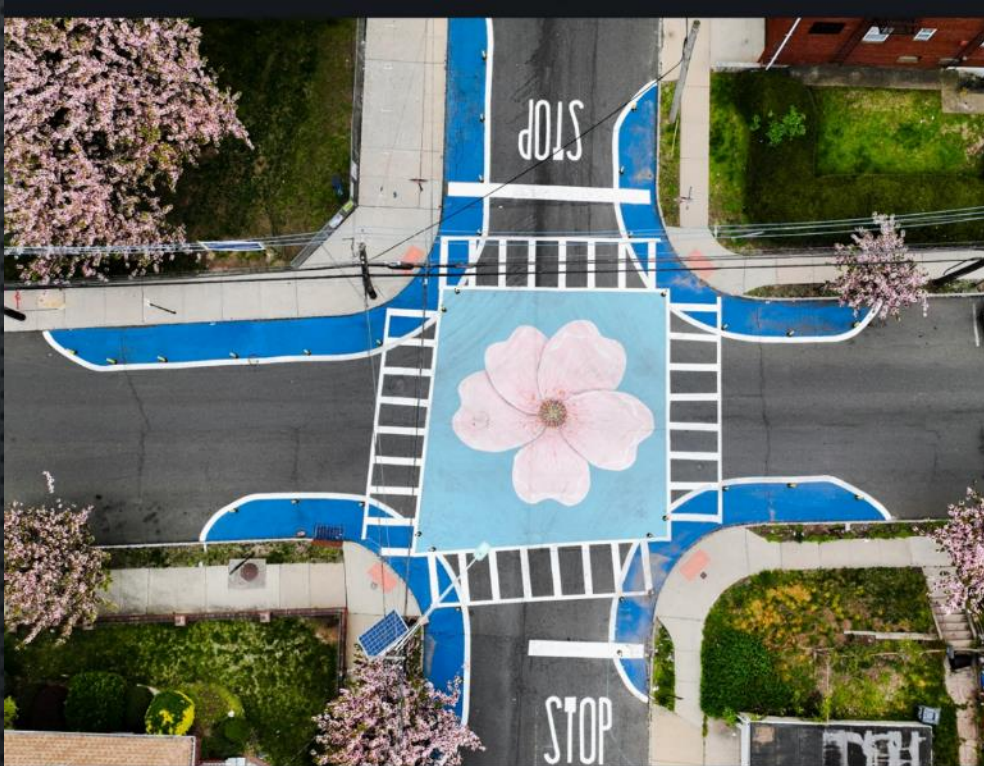


Township of Belleville  
*New Jersey*

# Township of Belleville, Essex County, NJ

## Safer Streets Projects

**April 2023**



**October 2024**



North Jersey Transportation Planning Authority's (NJTPA) Complete Streets Technical Assistance Program

Sustainable Jersey is collaborating with the Alan M. Voorhees Transportation Center (VTC) at Rutgers University to provide free technical assistance to municipalities to advance Complete Streets initiatives.

# Belleville Public Schools & Police Department Safe Routes to School Program

We have demonstrated our commitment to the program by meeting the following criteria for the **SRTS Gold award**:

- Having a SRTS Champion to support the program
- Having two Learn to Ride classes on April 22, 2023
- Having a Bike Rodeo on April 22, 2023
- Having a community ride on April 22, and June 3, 2023
- Participating in Green Fair on September 16, 2023
- Hosting a Learn to Ride on September 16, 2023
- Having two Walk to School with a Cop Days on May 23 and May 24, 2023
- Participated in walkability audit for BPS STP on December 21, 2023
- Passed a Complete Streets Policy
- Ongoing support from the Green Team



# Complete Streets

## Technical Assistance



Through North Jersey Transportation Planning Authority's (NJTPA) Complete Streets Technical Assistance Program, Sustainable Jersey is collaborating with the Alan M. Voorhees Transportation Center (VTC) at Rutgers University to provide free technical assistance to selected municipalities to advance a complete streets initiative. The program is made possible through NJTPA's federal funding from the U.S. Department of Transportation. No direct funding to municipalities is provided. Participants are selected through a competitive application process. Eligible applicants include municipal governments within the thirteen (13) counties that comprise the NJTPA region - Bergen, Essex, Hudson, Hunterdon, Middlesex, Monmouth, Morris, Ocean, Passaic, Somerset, Sussex, Union and Warren.

Complete streets are streets designed for all users, all modes of transportation and all ability levels. They balance the needs of drivers, pedestrians, bicyclists, transit riders, emergency responders and goods movement based on local context. To explain the benefits of complete streets in New Jersey, in 2020, we created [Streets for Everyone](#), a 3-minute public education video.

### Types of Technical Assistance

Since every municipality has different needs, the program provides technical assistance to help advance complete streets by documenting existing conditions, exploring opportunities for improvement and providing recommendations. Project options have included:

- **Bicycle Corridor or Network Plan:** To help identifying specific routes and road treatments to improve bicycling infrastructure.
- **Complete Streets Conceptual Rendering:** To prepare graphic renderings to help visualize potential improvements to streetscapes or public spaces.
- **Temporary Demonstration Project Guidance:** To provide guidance on the design and installation of pedestrian safety or bicycle infrastructure temporary safety measures.
- **Walkable Community Workshop:** A workshop and audit of up to a half-mile of street to identify potential pedestrian and bicycle improvements. Completed Project Reports
- **Complete and Green Streets for All Guidance:** Assistance in the development of, or update of an existing Complete Streets Policy to align with the 2020 NJDOT Complete and Green Streets for All Policy.
- **Crime Prevention through Environmental Design (CPTED) Safety Audit and Site Assessment:** A workshop and audit to assist a municipality in assessing and understanding potential physical improvements that could help prevent crime.

### Round 3

The application period for the 2022-2023 program closed on February 11, 2022. A project selection committee reviewed the applications and selected seven municipalities to receive technical assistance services as follows:

- Belleville Township, Essex County, Temporary Demonstration Project Guidance
- Bound Brook Borough, Somerset County, Walkable Community Workshop (WCW)
- Dunellen Borough, Middlesex County, Complete and Green Streets for All Policy
- Oakland Borough, Bergen County, Complete and Green Streets for All Policy
- Passaic City, Passaic County, Complete Streets Conceptual Renderings
- Plainfield City, Union County, Bicycle Corridor or Network Plan
- Seaside Heights Borough, Ocean County, Walkable Community Workshop (WCW)

## Partners -Township of Belleville, Belleville Public Schools and EZ Ride



Mayor, Deputy Mayor and Township Manager  
Superintendent of Belleville Public Schools and Business Administrator  
Belleville Police Department  
DPW and BOE Maintenance Department  
Green Team Coordinators

Lisa Lee and Erlea Maldonado, EZ Ride

---

CSTA Team: Keith Hamas (NJTPA), Leigh Ann Von Hagen (VTC), James Sinclair (VTC), Samuel Rosenthal (VTC) and Anne Heasley (SJ)



# What are issues the team observed and the factors that influence walking to school.



Busy Intersections

Faded Crosswalks or  
No Crosswalks

Roads Cracked or  
patched

Sidewalks cracked or  
upheaved

No "School Zone"  
signs present

Poor driver behavior  
Poor pedestrian behavior







Observations

# CROSSWALKS FOR A SAFER COMMUNITY

## Belleville Middle School Project

We'd like your feedback on the temporary mural and other improvements installed in March at the intersection of Holmes Street and High Street, adjacent to Belleville Middle School.

The purpose of this design is to improve travel safety and add art to the community.

If these improvements are successful, they can become permanent, and inspire similar installations at other intersections in Belleville.



### Demonstration Features

- Painted curb extensions
- Art mural at the intersection
- Sidewalk extensions in front of school
- Flexible posts marking the curb extensions

### Benefits

- Curb extensions increase visibility and shorten crosswalks to improve pedestrian safety
- Public art draws attention to the school zone, increasing driver awareness and school pride



We want to hear from you!

To complete a short survey, scan the QR Code or visit <http://go.rutgers.edu/Belleville>

The project is part of the NJTPA Complete Streets Technical Assistance Program, <https://www.njtpa.org/completestreets>

Survey

# CRUCES PEATONALES PARA UNA COMUNIDAD MÁS SEGURA

Nos gustaría conocer sus comentarios sobre el mural temporal y otras mejoras que se instalaron en marzo en la intersección de Holmes Street y High Street, junto a la Escuela Intermedia Belleville.

El propósito de este diseño es mejorar la seguridad vial y agregar arte a la comunidad.

Si estas mejoras tienen éxito, pueden volverse permanentes e inspirar instalaciones similares en otras intersecciones en Belleville.



### Características de la demostración

- Extensiones de acera pintadas en frente de la escuela
- Mural de arte en la intersección
- Postes flexibles que marcan las extensiones de la acera

### Beneficios

- Extensiones de acera aumentan la visibilidad y acortan los cruces peatonales para mejorar la seguridad de los peatones
- El arte público llama la atención sobre la zona escolar, aumentando la conciencia de los conductores y el orgullo escolar



¡Queremos oír tus pensamientos!

Para completar una breve encuesta, escanee el código QR o visite <http://go.rutgers.edu/Belleville>



Supplies:

- Paint
- Paint Brushes
- Rollers & Trays

- Extendable roller handles
- Traffic delineation bollards



Approximately 24 High School Art Club Students  
1 school day  
Street closed until next morning





Support and Benefits of the Project

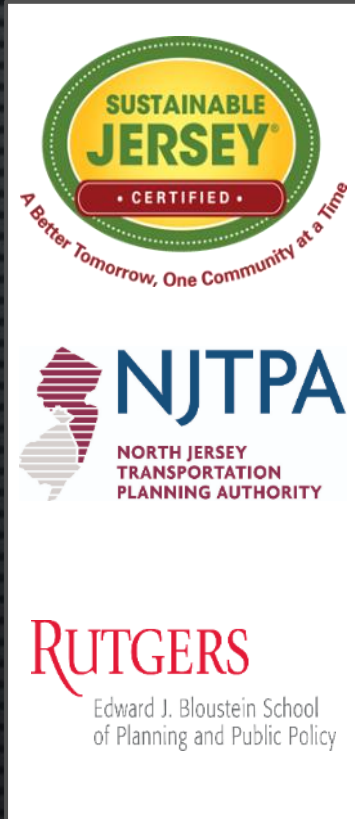


# Crosswalks for a Safer Community – The Belleville Middle School Project

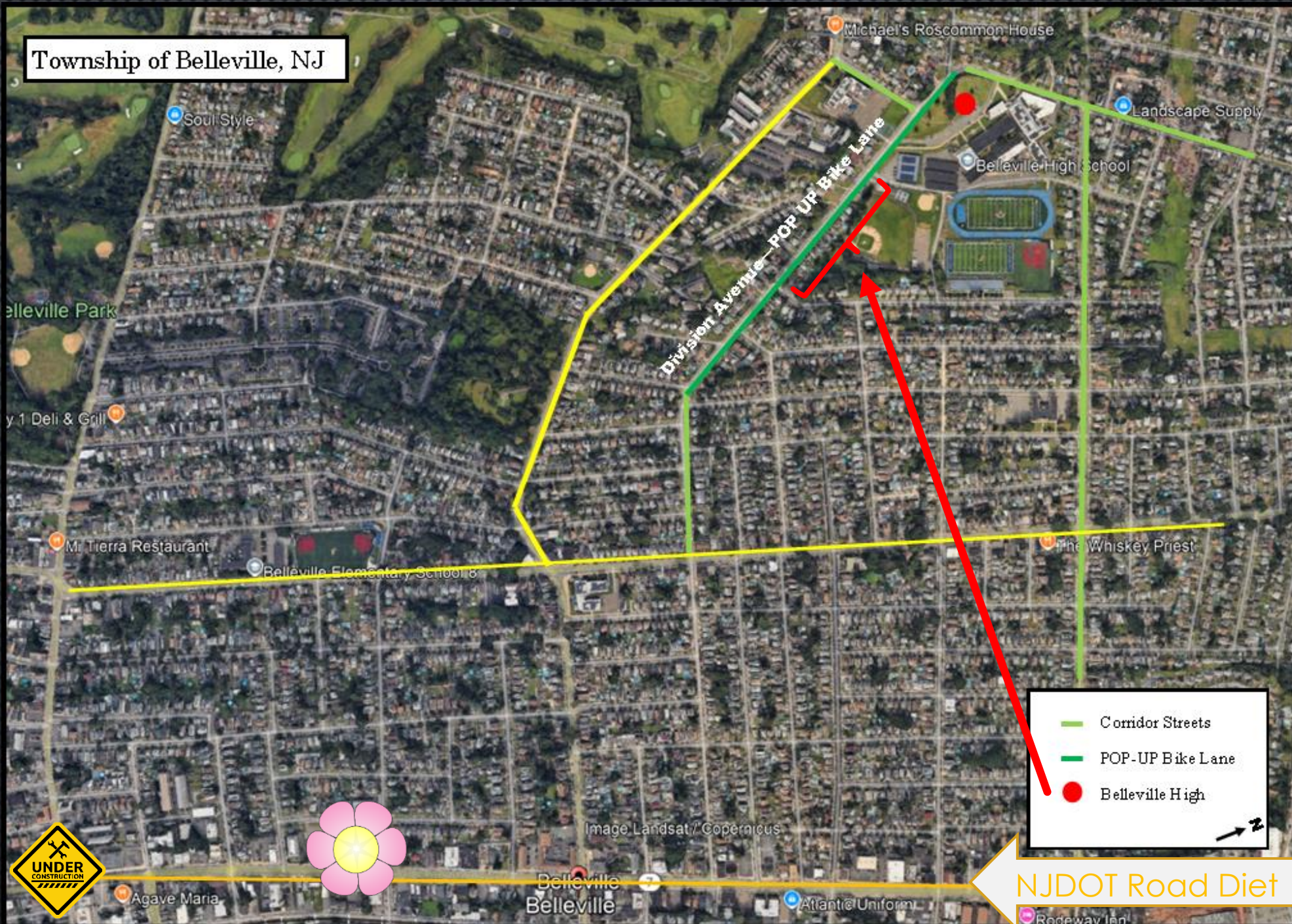


# Belleville Complete Streets Temporary Demonstration Project Area

## Belleville School District and Municipality



# Township of Belleville, NJ



County

State



- Corridor Streets
- POP-UP Bike Lane
- Belleville High

NJDOT Road Diet

**“Community areas are important for events because they bring people together, build relationships, and foster a sense of community pride!”**

High School grades 9-12

High School Sports

Summer Camp

Graduation

Fourth of July

Pumpkin Patch

Food Truck Festival

Summer Concerts

Farmers Market

Green Fair

Health and Wellness Fair

Multicultural Event

Holiday Events and Tree Lighting

and many many many

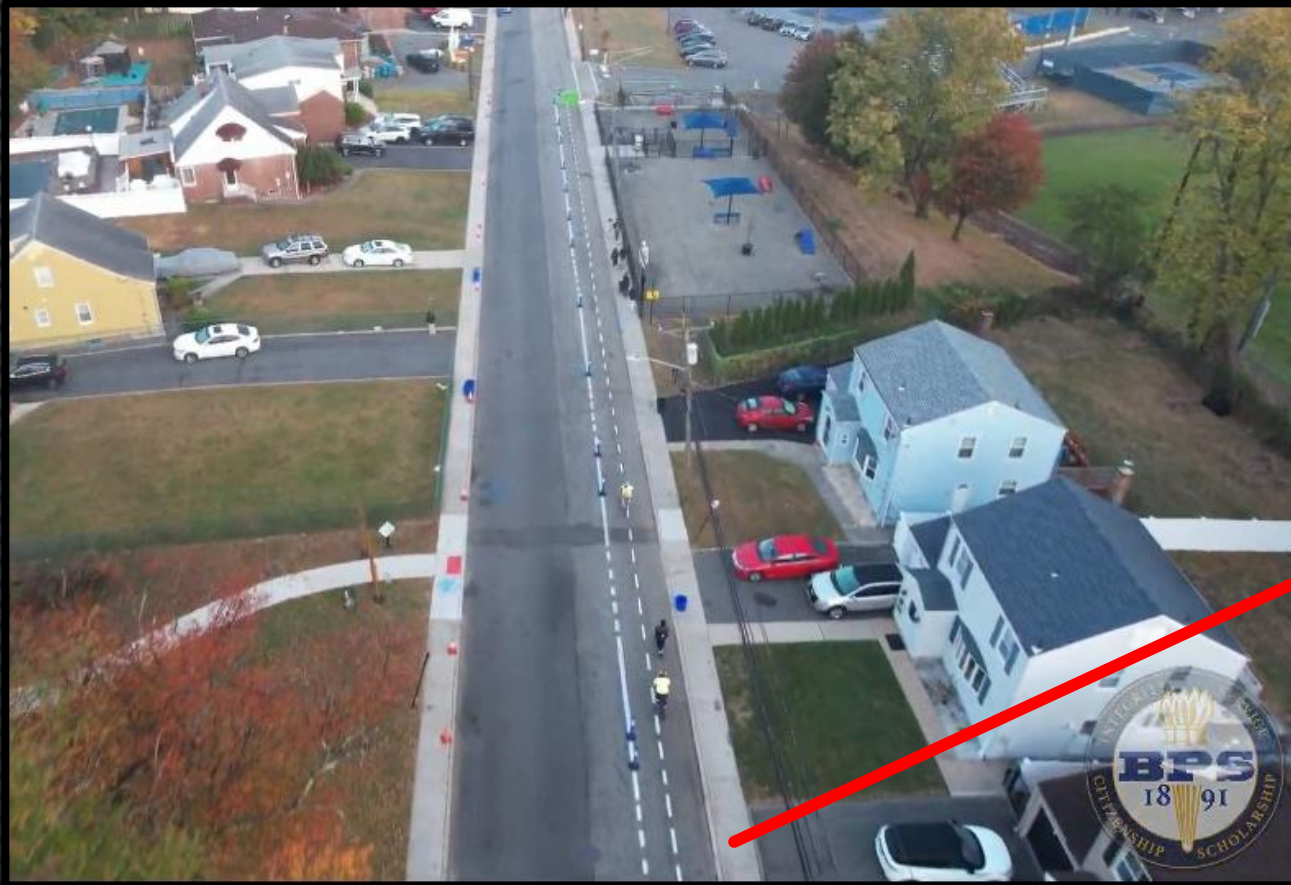
more...

**“Community Bike Ride!!!”**



# Township of Belleville, Essex County, NJ

## “Division Avenue – POP-UP Bike Lane Demonstration Project”



North Jersey Transportation Planning Authority's (NJTPA) Complete Streets Technical Assistance Program

Sustainable Jersey and the Alan M. Voorhees Transportation Center (VTC) at Rutgers University to provide free technical assistance to municipalities to advance Complete Streets initiatives.

## What's the Problem???

- Busy Two Way Street
- Faded crosswalks or no crosswalks
- Roads cracked or patched
- Sidewalks cracked or upheaved
- Narrow Sidewalks
- No "school zone" signs present
- Objects in the way
- Garbage in the way
- Overgrown Vegetation
- Poor driver behavior
- Poor pedestrian behavior

## What Are the Issues That Influence Walking or Biking?



The CSTA team visits the project site to observe ways that pedestrians, bicyclists, and motorists behave on the defined project street, the team will develop a profile of the area using local knowledge and existing data such as...

Crash data

Speed limits and measured driving speeds

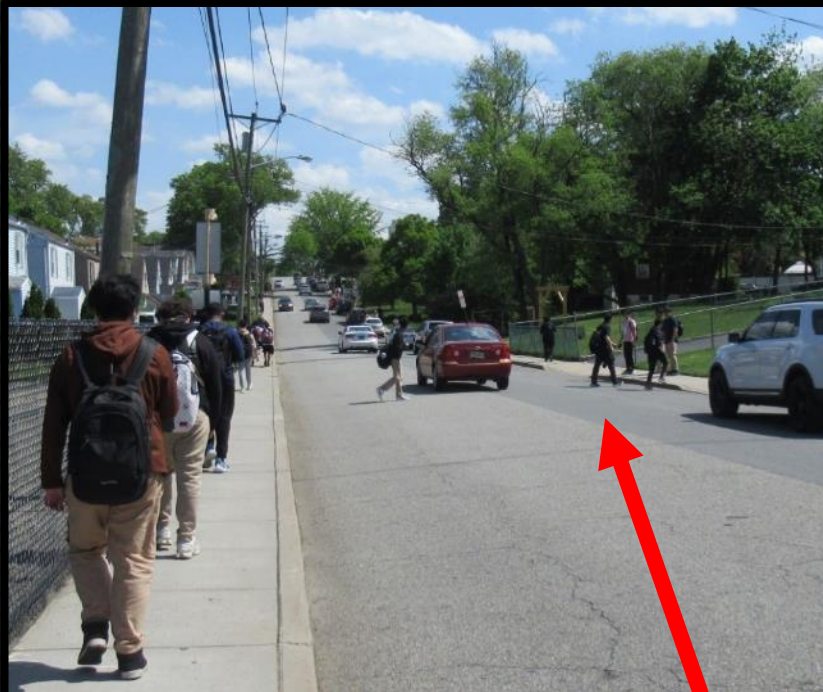
Traffic volumes

Conflict points

Belleville will assist the CSTA Team by providing previously collected data and studies, traffic and speed data, safe routes to school tallies, parking analysis and any other relevant data that can help inform the project team.

The team will take photos and measurements and meet with local representatives to discuss opportunities and challenges.

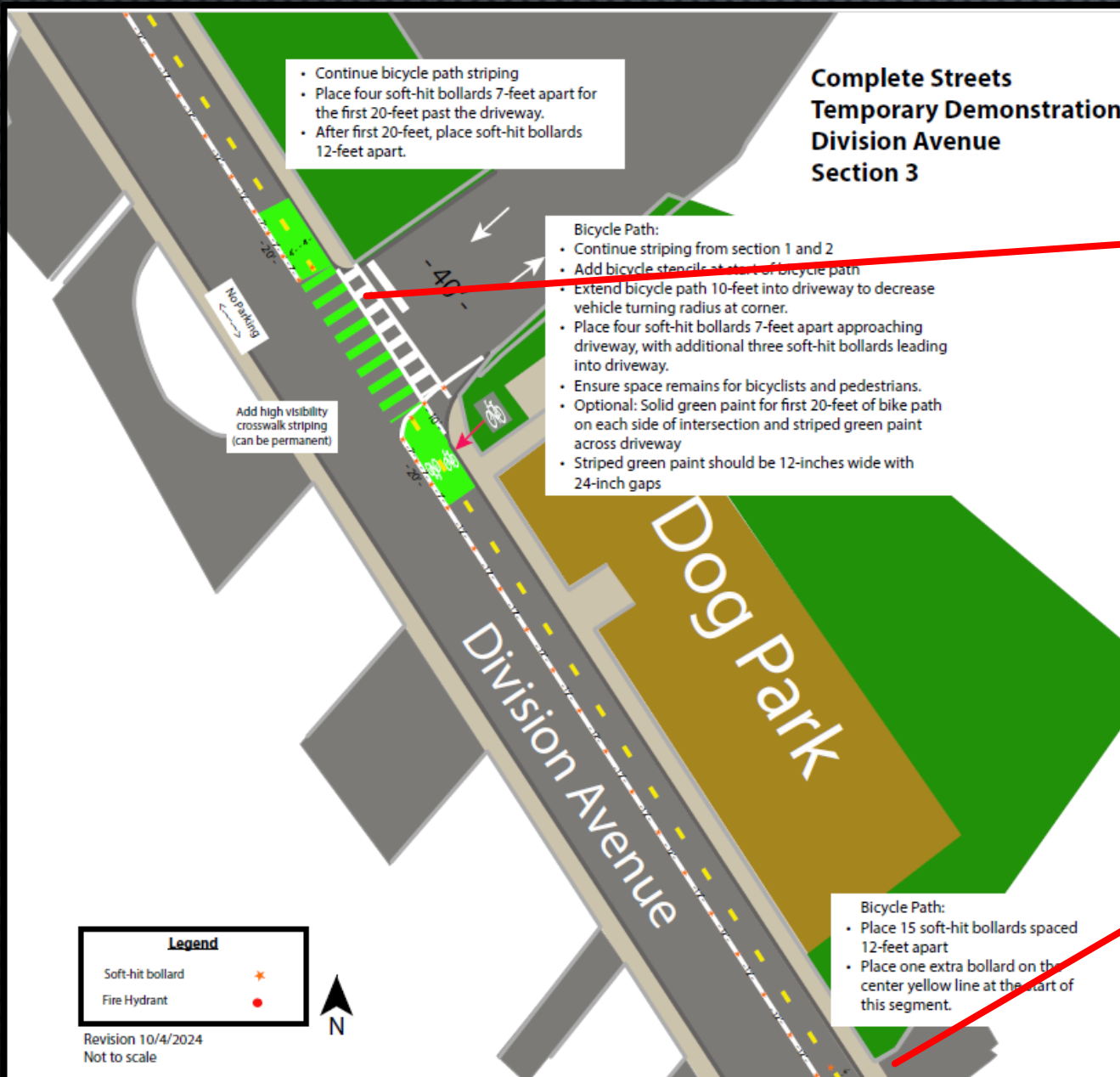
## Observations



Crossing in the middle of the street



Riding on the wrong side of the street



Concept and Design  
Bike Lane Standards  
Conditions and Demonstration

Demonstration projects are short-term, low-cost, temporary projects.

# DIVISION AVENUE BICYCLE PATH DEMONSTRATION

Starting October 24, 2024

Belleville wants your input on making Division Avenue safer!

Belleville Township is working on making it safer to walk and bicycle to Belleville High School. The Township will be showcasing a temporary bicycle path from October 24 to November 1 and wants to know what YOU think!

What is a Temporary Demonstration Project?

A Temporary Demonstration Project is a low-cost way to test out new street designs and get community input before investing in permanent changes. It allows residents and students to see and use the temporary infrastructure instead of relying only on concept images or descriptions.

What will Belleville be testing?

Belleville will be testing a two-way protected bicycle path between Nolton Street and Belleville High School along Division Avenue.

Protected bicycle paths provide a dedicated space for bicyclists to ride, away from motor vehicles and off sidewalks. Separating bicyclists and motor vehicles reduces conflicts that can arise due to the differences in their travel speeds. Bicycle paths have also been found to reduce motor vehicle speeds, increasing safety for all users. Pedestrians may also feel more comfortable with motor vehicle traffic placed further away from the sidewalk.

I live on Division Avenue. Will access to my home change?

Access in and out of your driveway will be maintained. A temporary no parking restriction will be in place during the demonstration period between Nolton Street and Belleville High School. Residents will be permitted to park overnight in the high school parking lot by the tennis courts.

How will the Township make the changes?

As part of this demonstration, temporary paint and signs will be added to delineate the two-way protected bike lane. In addition, plastic posts will be placed to help drivers understand the new traffic pattern.

How long will the demonstration be in place?

The changes will be in place from Thursday, October 24 to Friday, November 1.

How will success be measured?

The team's evaluation will include speed studies, direct observations, and feedback from residents. An online survey will be conducted once the changes are in place.

Why is this demonstration happening?

Belleville applied to the Complete Streets Technical Assistance program, a partnership of Rutgers-Voorhees Transportation Center, Sustainable Jersey, and the North Jersey Transportation Planning Authority (NJTPA), to develop a Bicycle Network Plan for the high school neighborhood. The Plan will identify ideas to improve roadway safety around the school and to encourage students and residents to walk and bicycle to the school campus, instead of driving. Shifting school trips away from motor vehicles can help reduce neighborhood congestion and increase quality of life for residents. The demonstration will help Belleville and the project team learn more about transportation needs in the school neighborhood.



# Belleville wants your input on making Division Avenue safer!

Posted Friday, October 25, 2024

## Temporary Bicycle Path

A two-way bicycle path, marked with temporary paint and movable plastic posts will be installed on the east side of Division Avenue, between Nolton Street and Belleville High School. Parking is currently permitted only on the west side of Division Avenue. During the demonstration, parking will be temporarily prohibited between Nolton Street and the high school. Residents are invited to use the high school parking lot by the tennis courts for overnight parking.



### Related Events

During the demonstration, EZ Ride Transportation Management Association, Belleville High School, and the Township of Belleville will be hosting a Bike to School Day event on October 30. In addition, a Safety Training class will be held at the high school on November 1 for students.

### Project Toolkit

Project materials are being provided by the NJTPA Complete Streets Demonstration Library. The NJTPA created the library to help communities interested in trying out bicycle lanes, corner "bump-outs," and other safety, placemaking, and traffic calming features. To learn more, visit [njtpa.org/demolibrary](https://njtpa.org/demolibrary).

### Public Input

Once the demonstration is in place, a questionnaire will be made available at <https://go.rutgers.edu/belleville-survey> or by using this QR code.



### Questions?

For questions about this project, contact Brian Banda, Township Manager, at 973-450-3407 and [bbanda@bellevillenj.org](mailto:bbanda@bellevillenj.org) or Matthew Paladino, Belleville School District, at 973-450-3500 and [matthew.paladino@bellevilleschools.org](mailto:matthew.paladino@bellevilleschools.org).



Township of Belleville  
New Jersey



Please take the Temporary Project Survey

For questions about this project, contact Brian Banda, Township Manager, at 973-450-3407 and [bbanda@bellevillenj.org](mailto:bbanda@bellevillenj.org) or Matthew Paladino, Belleville School District, at 973-450-3500 and [matthew.paladino@bellevilleschools.org](mailto:matthew.paladino@bellevilleschools.org).

[View Additional Info](#)

## Spanish

## DEMOSTRACIÓN DE CARRIL PARA BICICLETAS EN DIVISION AVENUE

A partir del 24 de octubre de 2024

¡Belleville quiere su opinión para hacer que Division Avenue sea un lugar más seguro!

El municipio de Belleville está trabajando para que sea más seguro caminar y andar en bicicleta hasta la escuela secundaria de Belleville. El municipio exhibirá una ciclovía temporal desde el 24 de octubre hasta el 1 de noviembre y quiere saber lo que USTED piensa!

¿Qué es un proyecto de demostración temporal?

Un proyecto de demostración temporal es una forma económica de probar nuevos diseños de calles y obtener la opinión de la comunidad antes de invertir en cambios permanentes. Permite a los residentes y estudiantes ver y utilizar la infraestructura temporal en lugar de depender únicamente de imágenes o descripciones conceptuales.

¿Qué estará probando Belleville?

Belleville pondrá a prueba un carril bici protegido de doble sentido entre Nolton Street y Belleville High School a lo largo de Division Avenue.

Los carriles bici protegidos brindan un espacio exclusivo para que los ciclistas viajen, lejos de los vehículos motorizados y fuera de las aceras. Separar a los ciclistas de los vehículos motorizados reduce los conflictos que pueden surgir debido a las diferencias en sus velocidades de desplazamiento. También se ha descubierto que los carriles para bicicletas reducen la velocidad de los vehículos motorizados, lo que aumenta la seguridad de todos los usuarios. Los peatones también pueden sentirse más cómodos con el tráfico de vehículos motorizados más alejado de la acera.

Vivo en Division Avenue. ¿Cambiará el acceso a mi casa?

Se mantendrá el acceso para entrar y salir de su entrada. Se aplicará una restricción temporal de estacionamiento durante el período de demostración entre Nolton Street y Belleville High School. Los residentes podrán estacionar durante la noche en el estacionamiento de la escuela secundaria junto a las canchas de tenis.

¿Cómo realizará el Municipio los cambios?

Como parte de esta demostración, se colocarán pinturas y señales temporales para delimitar el carril bici protegido de doble sentido. Además, se colocarán postes de plástico para ayudar a los conductores a comprender el nuevo patrón de tráfico.

¿Cuánto tiempo durará la demostración temporal?

Los cambios entrarán en vigor desde el jueves 24 de octubre hasta el viernes 1 de noviembre.

¿Cómo se evaluará el proyecto?

La evaluación del equipo incluirá estudios de velocidad, observaciones directas y comentarios de los residentes. Se realizará una encuesta en línea una vez que los cambios estén implementados.

¿Por qué se realiza esta demostración temporal?

Belleville solicitó al programa de Complete Streets Technical Assistance, una asociación del Centro de Transporte Rutgers-Voorhees, Sustainable Jersey y la Autoridad de Planificación del Transporte del Norte de Jersey (NJTPA), desarrollar un Plan de red de bicicletas para el vecindario de la escuela secundaria. El plan identificará ideas para mejorar la seguridad vial en los alrededores de la escuela y alentar a los estudiantes y residentes a caminar o ir en bicicleta al campus de la escuela, en lugar de conducir. Reducir los viajes en vehículos motorizados puede ayudar a reducir la congestión del vecindario y aumentar la calidad de vida de los residentes. La demostración ayudará a Belleville y al equipo del proyecto a aprender más sobre las necesidades de transporte en el vecindario escolar.



## English



### **NJTPA Complete Streets Demonstration Library:**

Material collection and catalog of the things you can borrow; but these things are also low cost.

### **Board of Education and Municipal Responsibilities:**

- Provide labors needed for installation.
- Coordinate with the police department to manage roadway closures, as needed, for installation.
- Coordinate involvement in installation



# Observations during the Demonstration Project!



**Belleville High School & EZ Ride  
Bike, E-Bike & E-Scooter Classes**

**Belleville High School, 100 Passaic Ave**

**Hone Your  
Bike & E-Scooter Skills**

Led by the EZ Ride Bike & Ped Team, Belleville High School students will learn and implement safe skills techniques to safely operate on the road.



**FRIDAY, NOVEMBER 1**  
1:00 PM - 2:30 PM

**Questions?**

**Lisa Lee**  
lee@ezride.org

**Caleb Rhodes**  
caleb.rhodes@bellevilleschools.org  
973-450-3500

Register & Sign Up  
using the QR Code or  
at [shorturl.at/42IJO](https://shorturl.at/42IJO)



**Schedule**

- 1:00 - 2:30 pm: Bike/E-Bike Safe Skills
- 1:00 - 2:30 pm: E-Scooter Safe Skills Class

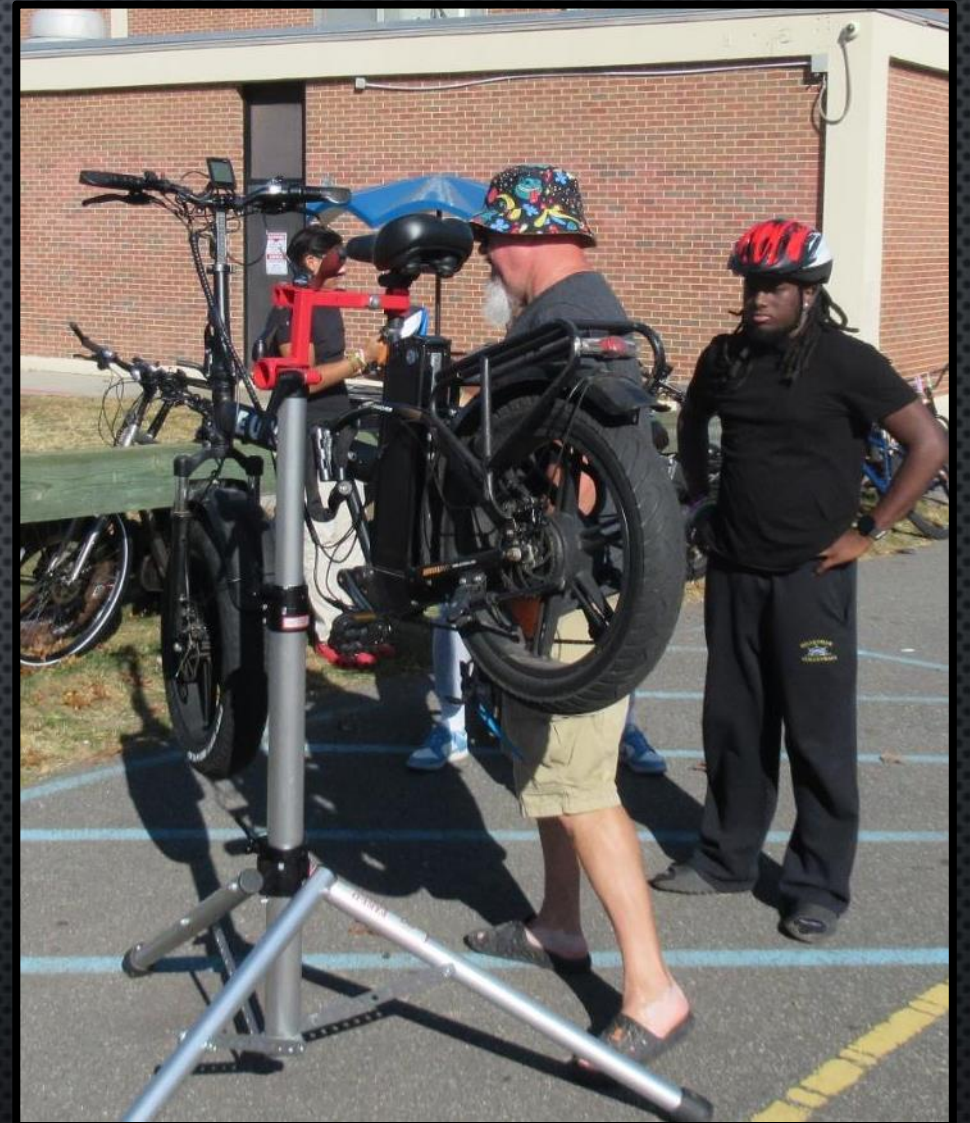
**E-Scooter Safe Skills Class:**  
Proper Helmet Fitting, Pre-Ride Safety Check  
Starting, Stopping, Scanning, Signals, Turning,  
Bike Handling & Safe Riding Tips

**Safe Bike/E-Bike Safe Skills Class:**  
Proper Helmet Fitting, Pre-Ride Safety Check  
Starting, Stopping, Scanning, Signals, Turning,  
Bike Handling & Safe Riding Tips

**Requirements**

- All: Inflate tires before class
- All students must wear a helmet & sneakers
- All students must bring a waiver signed by parent or guardian to participate.

## Borderline Bikes – Bill Quick



Borderline Bikes –  
Is a mobile fleet with convenience, safety and expertise whenever and wherever you are!

Free Helmets



Road Course

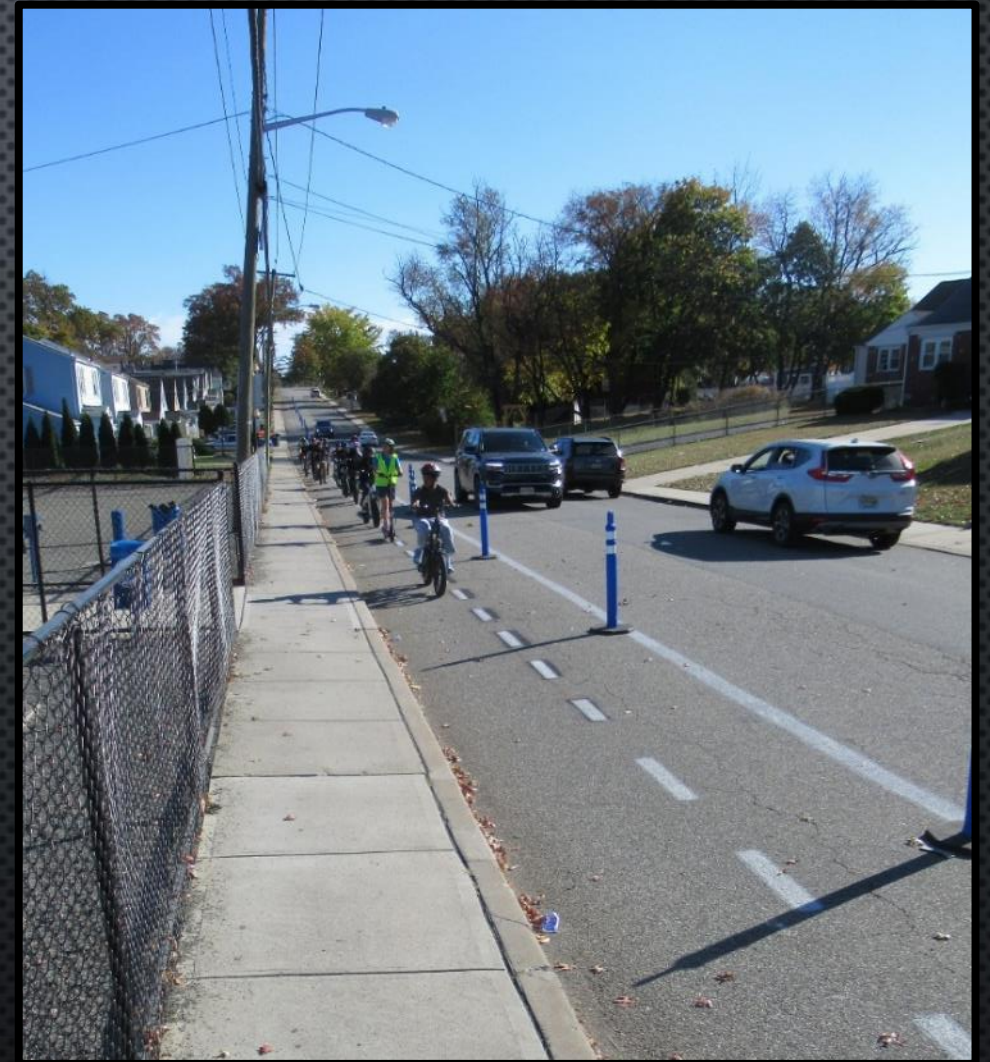


Safety Education



This event provided student engagement through a project that has real meaning.

## Testing the Bike Lane



# “POP-UP Bike Lane Project”



Thank You !



# Grants

NJTPA Together North Jersey – Vibrant Spaces (Local Technical Assistance) 2021  
Improvements to Washington Avenue Commercial District

NJ DOT– Safe Streets to Transit Grant Program 2022  
Silver Lake Light Rail Pedestrian Safety Improvements -\$290,000.0

NJ DOT– Safe Streets to Transit 2023  
Pedestrian Improvements to Franklin Street -\$446,000.00

NJ DOT- Safe Streets to Transit 2024  
Light Rail Pedestrian Improvements -\$187,000.00

★ US DOT- Safe Streets and Roads for All (SS4A) 2023  
Roadway Safety Action Plan -\$400,000.00

Sustainable Jersey – CSTA Program 2022  
Temporary Demonstration Project at MS Intersection -\$10,000.00

NJ DOT- Safe Routes to School Grant 2024  
Crosswalk Improvements for Public School Walking Routes -\$962,000.00

NJ DOT– Local Transportation Projects Fund Grant Program  
Improvements to Washington Avenue Streetscape -\$1,632,864.00





# 3 Steps to Get Started

1. Identify priority locations
2. Engage partners and community stakeholders
3. Leverage available resources and technical assistance
  - Transportation Planning Organizations (NJTPA, SJTPO, DVRPC)
  - Transportation Management Associations
  - Voorhees Transportation Center Resources
  - Sustainable Jersey Grants and Technical Assistance
  - Other State College and Universities in your region

*Planning ahead will help you be prepared to submit for competitive grants and technical assistance opportunities.*

# 2026 NEW JERSEY SUSTAINABILITY SUMMIT

## Stay Connected With Us



[www.sustainablejersey.com](http://www.sustainablejersey.com)



[@Sustainable\\_Jersey](https://www.instagram.com/Sustainable_Jersey)



[@SJ\\_Program](https://twitter.com/SJ_Program) and [@SJ\\_Schools](https://twitter.com/SJ_Schools)



[@SustainableJersey](https://www.facebook.com/SustainableJersey)



[@sustainable-jersey](https://www.linkedin.com/company/sustainable-jersey)