

2026 NEW JERSEY

SUSTAINABILITY SUMMIT



32K
ACTIONS COMPLETED

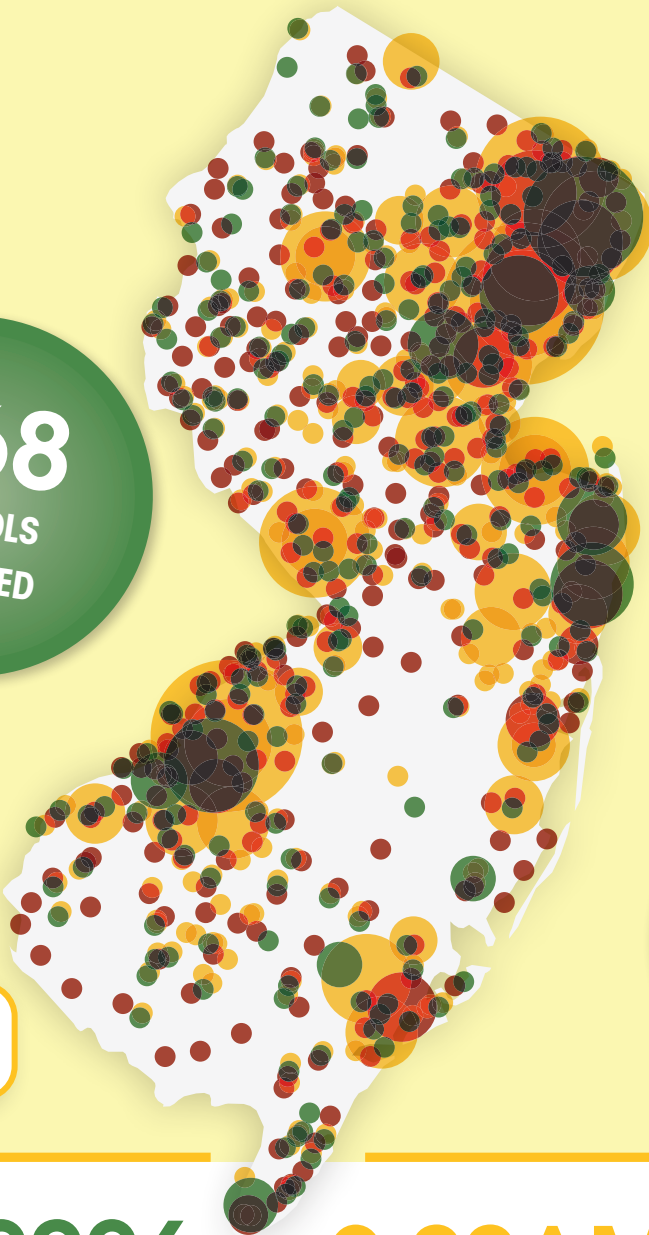
67%
OF PUBLIC SCHOOLS
PARTICIPATING

368
SCHOOLS
CERTIFIED

\$515,000
IN GRANTS
AWARDED

180
MUNICIPALITIES
CERTIFIED

83%
OF MUNICIPALITIES
PARTICIPATING



 Open WiFi Network:
Bell_Works_Events_WiFi

MAY 15, 2026 **9:00AM-4:00PM**
BELL WORKS, HOLMDEL, NEW JERSEY

EVENT SPACE

ELECTRIC LAWN EQUIPMT

Lawn outside Ballroom
from 10:00am-3:00pm

EV RIDE & DRIVE / ELECTRIC FLEET SHOWCASE

Outside Ballroom & down path.

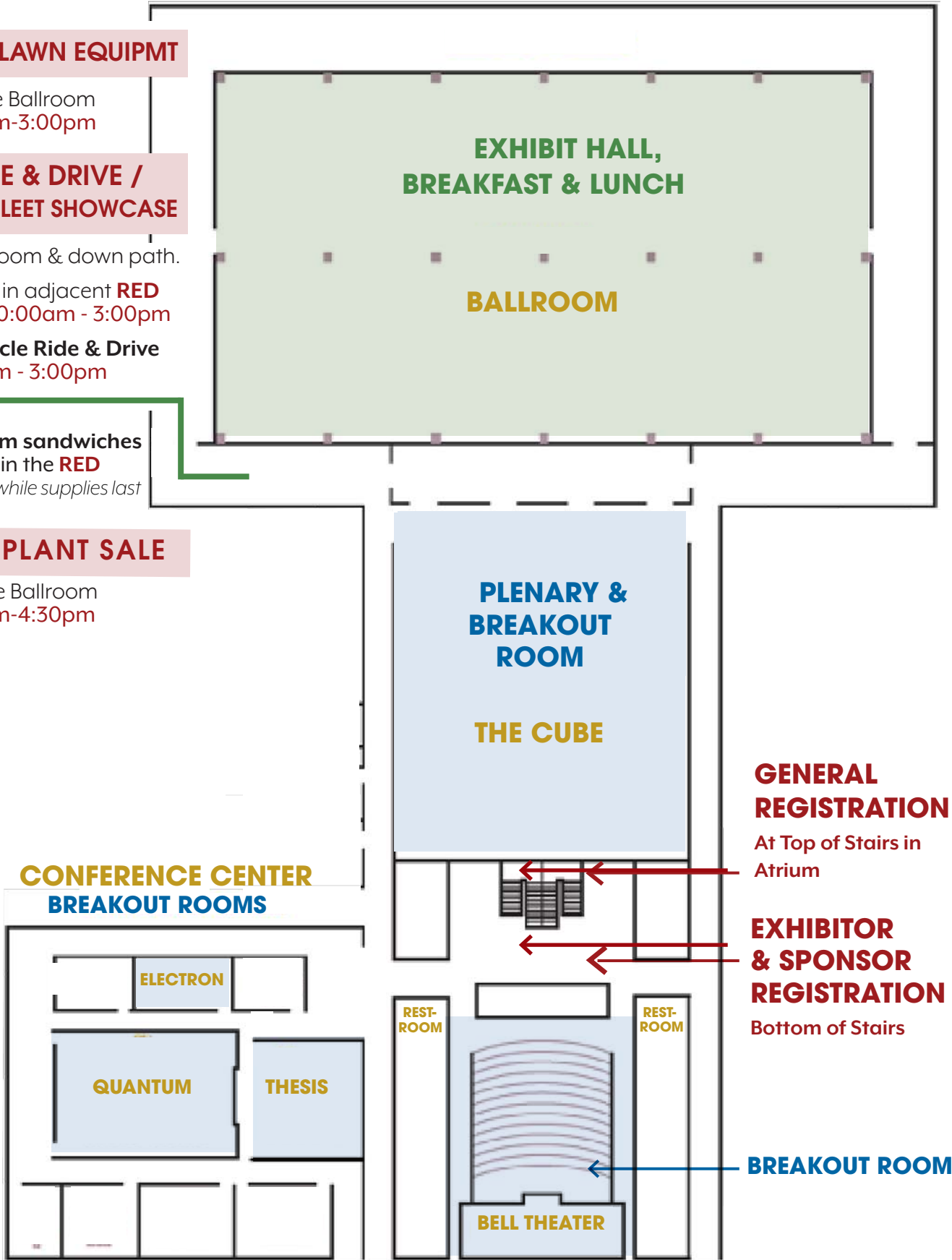
Showcase is in adjacent **RED**
parking lot: 10:00am - 3:00pm

Electric Vehicle Ride & Drive
from 10:00am - 3:00pm

Free ice cream sandwiches
during lunch in the **RED**
parking lot! **while supplies last*

NATIVE PLANT SALE

Lawn outside Ballroom
from 12:00pm-4:30pm



BREAKOUT ROOM

SUMMIT PROGRAM SCHEDULE

Registration & Networking <i>(Breakfast in Ballroom)</i> <i>*Program will begin promptly at 9:00am</i>	8:00 - 9:00
Plenary Session <i>(The Cube)</i> Caroline Ehrlich , Chair, Sustainable Jersey Board of Trustees & Woodbridge Twp. Randall Solomon , Executive Director, TCNJ Sustainability Inst. & Sustainable Jersey	9:00 - 9:50
Break	9:50 - 10:00
Sustainability Sessions 1 <i>(Bell Theater, Cube, Electron, Quantum, Thesis)</i>	10:00 - 11:10
Morning Break	11:10 - 11:30
Sustainability Sessions 2 <i>(Bell Theater, Cube, Electron, Quantum, Thesis)</i>	11:30 - 12:30
Lunch <i>(Ballroom)</i>	12:30 - 1:45
Sustainability Sessions 3 <i>(Bell Theater, Cube, Electron, Quantum, Thesis)</i>	1:45 - 2:45
Afternoon Break	2:45 - 3:00
Sustainability Sessions 4 <i>(Bell Theater, Cube, Electron, Quantum, Thesis)</i>	3:00 - 4:00
Announcement of Passport Prize Winner(s) <i>(Bell Theater)</i>	4:05
Post Summit Happy Hour <i>(Bar Bella, upstairs Atrium behind the stairs. Outdoor deck if weather permits.) *Cash bar</i>	4:15

PROGRAM BREAK OPPORTUNITIES:

Sustainability Exhibit! Exhibitors will present their sustainability solutions for you to bring back to your community. Get your passport stamped & earn a chance to win prizes!

EV Ride & Drive is Back! Visit the DEP **Drive Green Table (#1)** in the Exhibit Hall and sign up to take one of the hottest electric vehicles on the market for a spin around the Bell Works campus. R&D hours: **10:00am-3:00pm**.

Electric Fleet Showcase! Visit the medium- & heavy-duty electric fleet vehicles in the **Red Parking Lot**, just past the Drive Green tent, from **10:00am-3:00pm**. Hosted by our friends at NJ Electric Vehicle Assn & NJ Clean Cities Coalition.

Electric Lawn Equipment Demo! Greenworks will be demo'ing equipment on the lawn from **10:00am-3:00pm**.

NEW! Native Plant Sale! Tock up on your seasonal plants: perennials, grasses, shrubs, trees, & groundcovers will all be available for purchase. East Coast Natives will be on the lawn outside outside the Ballroom from **12:00-4:30pm**.

NEW! Free Ice Cream! Grab your complimentary ice cream sandwich **during lunch** at the Fleet Showcase in the **Red Lot**, courtesy of Jersey Freeze, while supplies last.

Do More with Every Dollar

for the Communities You Serve

Clean energy programs help **reduce** energy costs, **modernize** facilities, and **leverage efficiency** for local governments, schools, and nonprofits.



Connect with our experts to plan your next project!

866-NJSMART
cleanenergy.nj.gov



Discover energy efficiency incentives for your organization



New Construction and Gut Rehab



FREE
Local Government Energy Audit for Schools, Government, and Nonprofit Buildings



Solar Programs

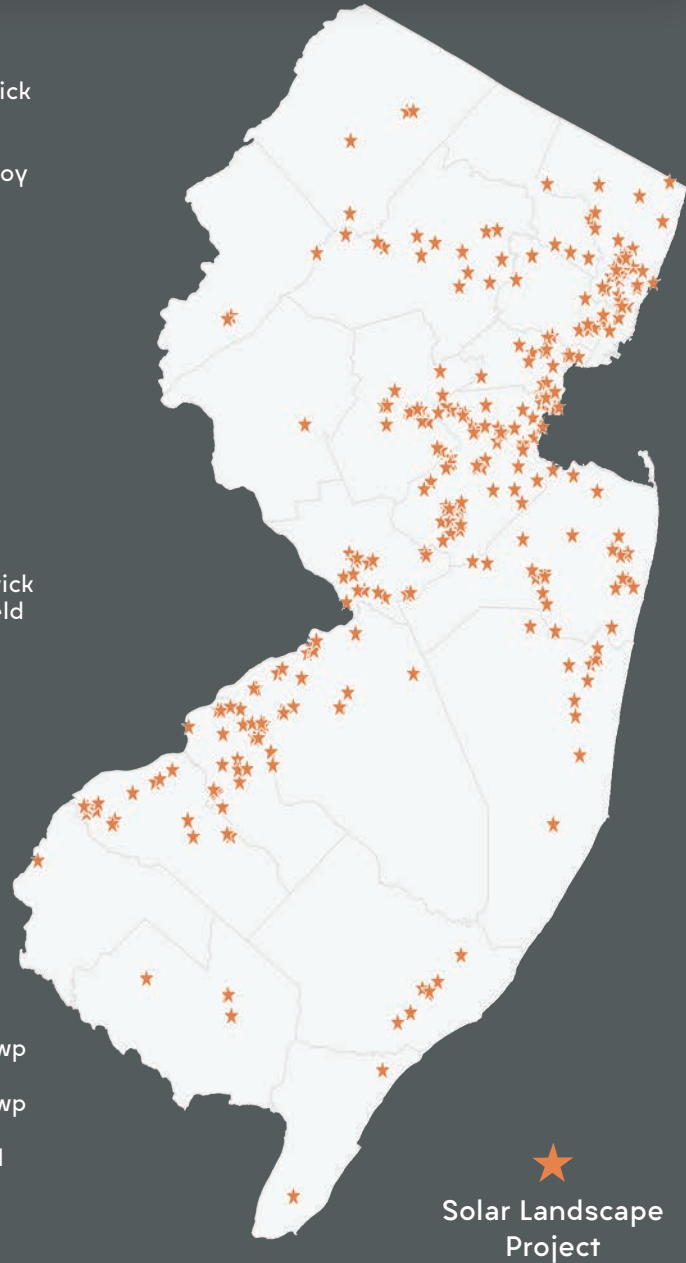


Electric Vehicle Programs

Community Solar: Reducing Energy Costs, Creating Jobs

PROJECTS IN:

- Aberdeen
- Absecon
- Avenel
- Barnegat
- Barrington
- Belleville
- Berkeley
- Blackwood
- Bogota
- Boonton
- Bordentown Twp
- Brick
- Bridgeton
- Bridgewater
- Burlington
- Carlstadt
- Camden
- Carteret
- Cherry Hill
- Clifton
- Cookstown
- Cranbury
- Cranford
- Dayton
- Delran
- Dover
- East Brunswick
- East Greenwich
- East Hanover
- East Rutherford
- East Windsor
- Eastampton
- Eatontown
- Edgewater
- Edgewater Park
- Edison
- Egg Harbor
- Elizabeth
- Elmwood Park
- Evesham
- Fair Lawn
- Fairfield Twp (Essex)
- Franklin Twp (Somerset)
- Franklin Twp (Warren)
- Freehold Twp
- Galloway
- Glassboro
- Gloucester
- Green Brook
- Hackettstown
- Hamilton
- Hanover
- Hardyston
- Hazlet
- Hillsborough
- Hillside
- Ho-Ho-Kus
- Howell
- Jackson
- Jamesburg
- Jersey City
- Kearny
- Kenilworth
- Lakewood
- Lawrence
- Ledgewood
- Linden
- Little Ferry
- Logan
- Lumberton
- Lyndhurst
- Manalapan
- Maple Shade
- Marmora
- Maywood
- Middle
- Middlesex
- Middletown
- Millville
- Monroe Twp (Middlesex)
- Montville
- Moonachie
- Moorestown
- Morris
- Mount Laurel
- Mount Olive
- Neptune
- Newark
- North Bergen
- North Brunswick
- Northvale
- Old Bridge
- Parsippany-Troy Hill
- Passaic
- Pennsauken
- Pennsville
- Perth Amboy
- Piscataway
- Port Reading
- Randolph
- Ridgefield
- Robbinsville
- Rockaway
- Sayreville
- Secaucus
- Somerset
- South Brunswick
- South Plainfield
- Spotswood
- Springfield
- Stratford
- Swedesboro
- Tenafly
- Teterboro
- Tinton Falls
- Toms River
- Totowa
- Trenton
- Union
- Voorhees
- Wall
- Wantage
- Warren
- Washington Twp (Gloucester)
- Washington Twp (Gloucester)
- West Deptford
- Westwood
- Wood-Ridge
- Woodbridge
- Woolwich




Find out how to bring the guaranteed cost savings of community solar to your residents. **No solar panels – just solar savings.**

For more information, email Jennifer Schneider at JSchneider@solarlandscape.com.

SOLARLANDSCAPE.COM/MUNI

Because things
may break, but
our resolve won't.

 NJready.com

Jersey
Ready™

 **PSEG**



WHAT IS NJSBA?

New Jersey School Boards Association, a federation of boards of education, has evolved over the last century-plus to deliver direct services, resources, and professional learning opportunities for school board members, their districts, and New Jersey's education community.

NJSBA has expanded its operations to include showcases of student achievement, savings through its cooperative pricing system, year-round professional learning, and strategic partnerships that directly benefit boards of education and the state's 1.4 million public school students.

Learn more at www.njsba.org



***NJSBA** is a proud supporter of Sustainable Jersey for Schools.*

In continued support of

Sustainable Jersey[®]

Progress starts with working together.

Energy efficiency is an impactful, more affordable way to help reduce energy usage and manage costs.

The New Jersey Natural Gas SAVEGREEN[®] energy-efficiency program is designed to help you and your community move toward a more sustainable, cleaner energy future.

Learn more at

www.savegreen.com

877-455-NJNG (6564)



New Jersey
Natural Gas

NEW JERSEY NATURAL GAS
SAVEGREEN[®]

SUPPORTING OUR NEIGHBORS SINCE 1887.

Northfield Bank is proud to support Sustainable Jersey.
We salute you for the work you do in our community!



Tri-State Energy Proudly Supports Sustainable Jersey

Exclusive Closed Network Utility Programs are Now Available and Fully Funded, Offering No-Bid Energy Upgrades for Schools and Municipalities.



One Partner. Coordinated Energy
Solutions for Every Facility.

- Municipal and School District specialists with proven experience in leveraging no-bid utility incentives to dramatically offset project costs.
- ESCNJ-awarded co-op vendor for Job Order Contracting (JOC) electrical services statewide. No-bid purchasing for members.
- DPMC classified with exclusive access to NJ Closed utility incentive programs.
- Mechanical, Electrical and Plumbing Design Engineering Services, Construction Services, Commissioning, and M&V Services.
- Turnkey energy solutions, fully managed from start to savings.
- Cut operational and overhead expenses while freeing up resources.
- Modernize outdated systems without straining your budget.
- 40 Years experience serving New Jersey.

Building A Stronger, Sustainable Community



Proud of our ongoing partnership with Sustainable Jersey to bring sustainable practices that strengthen our community.

CONSERVE[®]



**SOUTH JERSEY
GAS[®]**

southjerseygas.com/conserve



**ELIZABETH TOWN
GAS**

elizabethtowngas.com/conserve





The **New Jersey Education Association** is proud to partner with

Sustainable Jersey for Schools

to support projects that have a positive impact on New Jersey's students, staff, and public school communities.

Pictured above (top to bottom):

President **Steve Beatty**, Vice President **Petal Robertson**, & Secretary-Treasurer **Tina Dare**

SUSTAINABILITY SESSIONS: 10:00 - 11:10am

FULL SPEED AHEAD: WHAT'S NEW IN SUSTAINABLE JERSEY'S TRANSPORTATION SUITE **SJ, SJS • Thesis**

Whether you're building EV infrastructure, expanding active transportation options, or simply looking for a smoother route to certification, this session will take attendees on a ride through the newest and freshly upgraded transportation actions in the Sustainable Jersey program. We'll pop the hood on updated requirements, explore brand new resources, and highlight practical tools that can help your municipality reduce emissions, improve mobility, and drive meaningful change. We will also learn from municipalities & school districts about their own transportation experiences.

Jenny Ludmer, Sustainable Princeton; **Robin Heston-Murphy**, NJDEP Bureau of Mobile Services; **Vic DeLuca**, Maplewood Township Committee; **Victoria Bearden**, Sustainable Jersey Energy Team

CEUs: CRP, 1.0 Classroom; CMFO/CCFO, 1.0 Office Management and Ancillary Subjects; CTC, 1.0 General/Secondary; CPWM, 1.0 Management; RMC, 1.0 Professional Development; QPA, 1.0 Green Purchasing

NAVIGATING NEW JERSEY'S MS4 RULES: WHAT GREEN TEAMS NEED TO KNOW **SJ • Cube**

New Jersey's 2023 municipal MS4 stormwater permit marks a major shift toward measurable water quality improvements. This session will provide Green Teams with an overview of MS4 requirements and available resources to support compliance, including how Sustainable Jersey is updating actions to align with the new rules. Case studies featuring grant-funded compliance efforts, opportunities for technical assistance, and strategies for cross-municipal watershed collaboration will be shared. The session will also examine how stormwater utilities can help municipalities plan for and fund long-term watershed improvements.

Anne Heasley, Sustainable Jersey Policy & Planning Team; **Daniel Van Abs**, Planner; **Matthew Leconey**, Rutgers Cooperative Extension Water Resources Program; **Michael Pisauro, Esq.**, The Watershed Institute

CEUs: CRP, 1.0 Classroom; CMFO/CCFO, 1.0 Office Management and Ancillary Subjects; CTC, 1.0 General/Secondary; CPWM, 1.0 Management; RMC, 1.0 Professional Development; QPA, 1.0 Green Purchasing; 1.0 NJCCCC; 1.0 Public Health

SUSTAINABILITY HEROES: SUCCESSES WORTH SHARING **SJ, SJS • Quantum**

This lightning-round session will feature a panel of Sustainable Jersey's Sustainability Heroes—individuals driving meaningful change in communities across New Jersey. Representing municipalities and schools, the heroes will share the projects and actions that made a real difference, what worked, the challenges they encountered, and the strategies behind their success. Designed for peer-to-peer learning, this session will

leave attendees inspired and equipped with practical ideas they can adapt and put into action in their own communities:

Amanda J. Nesheiwat, Hudson County Improvement Authority; **Anna Evans**, Hainesport Township Committee; **Caroline Mann**, Clinton Township School District Green Team; **Kristy Ranieri**, Sustainable Jersey; **Ralph Cooper**, Upper Township Green Team; **Nancy Facey-Blackwood**, Red Bank Borough Council

CEUs: CRP, 1.0 Classroom; CEFM, 1.0; CMFO/CCFO, 1.0 Office Management and Ancillary Subjects; CTC, 1.0 General/Secondary; CPWM, 1.0 Management; RMC, 1.0 Professional Development; QPA, 1.0 Green Purchasing

UPDATES FROM STATE AGENCIES **SJ, SJS • Bell Theater**

New Jersey State Agency leaders will share their latest sustainability initiatives that impact municipalities and schools. Attendees will hear directly from decision-makers about emerging and ongoing approaches that state agencies are taking to promote sustainability, reduce our carbon footprint, conserve natural resources, and advance social equity. Panelists will discuss key programs, initiatives, and resources they have developed and implemented. Ask questions and gain valuable insights into the programs and resources available to support your sustainability efforts.

Jen Becker, NJEDA Dept. of Clean Energy; **Justin Kohley**, NJBPU; **Peg Hanna**, NJDEP Division of Climate Change Mitigation and Monitoring; **Michael Manzella**, NJ Dept. of Transportation; **Randall Solomon**, Sustainable Jersey; **Sarah Sterling**, NJ Dept. of Education Office of Climate Change Education

CEUs: CEFM, 1.0, CRP, 1.0 Classroom; CMFO/CCFO, 1.0 Office Management and Ancillary Subjects; CTC, 1.0 General/Secondary; CPWM, 1.0 Government; RMC, 1.0 Professional Development; QPA, 1.0 Green Purchasing; 1.0 NJCCCC; 1.0 Public Health

ASK THE TRANSPORTATION & SAFE ROUTES EXPERTS (DROP-IN COACHING SESSION) **SJ, SJS • Electron**

Do you have questions about making your community safer for walking and biking? Experts from the NJ Bicycle and Pedestrian Resource Center (BPRC) and the NJ Safe Routes to School (SRTS) program will be on hand to answer your questions about Sustainable Jersey's municipal and school transportation-related actions, technical resources to support better infrastructure for biking, walking, and rolling. They will also connect you to your Regional Safe Routes Coordinator and local Transportation Management Association to create safe, healthy, and equitable travel conditions for all ages and abilities.

Andrew Olsen, Alan M. Voorhees Transportation Center; **Sean Meehan**, Alan M. Voorhees Transportation Center

CEUs: CMFO/CCFO, 1.0 Office Management and Ancillary Subjects

SUSTAINABILITY SESSIONS: 11:30 – 12:30pm

BRAVE NEW WORLD: NAVIGATING THE AGE OF AI, MISINFORMATION & MEDIA OVERLOAD SJ, SJS • Bell Theater

This session will examine how artificial intelligence is reshaping the information landscape and influencing how individuals learn, engage, and make decisions. The discussion will explore informational literacy, algorithmic bias, misinformation, and the mental health implications of navigating an AI-driven society, with consideration of the evolving role of education within this context. Panelists will discuss how schools, libraries, community organizations, and public leaders can work together to strengthen critical thinking, promote equity, and support digital wellbeing in an increasingly complex and automated world.

Gilbert Gonzalez, NJ Dept. of Education Office of Innovation; **Meredith Broussard**, Arthur L. Carter Journalism Institute at NYU; **Detgen Greeff**, The Balance Project; **Randall Solomon**, Sustainable Jersey

CEUs: CRP, 1.0 Classroom; CMFO/CCFO, 1.0 IT; CTC, 1.0 IT; CPWM, 1.0 IT; RMC, 1.0 IT; QPA, 1.0 IT; 1.0 Public Health; 1.0 NJCCCC

ENERGY IN ACTION: PRACTICAL RESOURCES FOR MUNICIPAL AND SCHOOL FACILITIES SJ, SJS • Thesis

This session highlights the full suite of Sustainable Jersey energy resources for advancing energy efficiency, renewable energy implementation, and fleet electrification. The presentation will showcase practical tools and materials local governments can use immediately, including the Sustainable Jersey Purchasing Center, the New Jersey Community Solar Project Finder, and Sustainable Jersey's energy guidebooks. This session will also provide an overview of Sustainable Jersey's most important energy resource -- the energy technical assistance team. Learn how technical assistance can help fill capacity limits and provide expertise to keep energy projects moving forward.

Michael Burden, Fairfield Twp (Cumberland Co.); **Mylene Guimaraes**, Sustainable Jersey Energy Team; **Tracey Woods**, Sustainable Jersey Energy Team; **Victoria Bearden**, Sustainable Jersey Energy Team

CEUs: CRP, 1.0 Classroom; CMFO/CCFO, 1.0 Office Management and Ancillary Subjects; CTC, 1.0 General/Secondary; CPWM, 1.0 Government; RMC, 1.0 Professional Development; QPA, 1.0 Green Purchasing; CEFM, 1.0

FOOD WASTE REDUCTION STRATEGIES IN NEW JERSEY SCHOOLS SJS • Quantum

Learn from schools that are reducing food waste through practical approaches such as organic waste recycling, share tables, smarter lunchrooms, and incorporating local produce. Presenters will share implementation strategies, resources, partnerships, and challenges. Leave with concrete ideas to strengthen your own waste reduction efforts.

Kate Lemerich, Metuchen Public Schools; **Kelly Stone**, Long Branch Public Schools; **Rachel Johnson**, Aramark / New Brunswick School District; **Véronique Lambert**, Sustainable Jersey for Schools

CEUs: CRP, 1.0 Classroom; CMFO/CCFO, 1.0 Office Management and Ancillary Subjects; CTC, 1.0 General/Secondary; CPWM, 1.0 Management; RMC, 1.0 Professional Development; QPA, 1.0 Green Purchasing; CEFM, 1.0

FROM AWARENESS TO ACTION: BUILDING CLIMATE-READY COMMUNITIES SJ • Cube

Is your community prepared for the reality of climate change? Moving beyond simple awareness, this session provides a roadmap for action. Discover how to assess critical hazards—including flooding, extreme heat, and wildfires—and identify solutions that balance immediate adaptation with long-term sustainability. Hear directly from planners and municipalities who utilized Sustainable Jersey's Climate Vulnerability Assessment Technical Assistance grant. We will demonstrate a comprehensive methodology that not only fulfills the mandatory climate assessment for your Master Plan's Land Use Element but also positions your town for the Gold Star in Climate Readiness. Join us to learn how to make climate adaptation a foundational pillar of your community's vision.

Christopher Cosenza, AICP, PP, LRK Architects; **Lindsey Massih**, PP, AICP, Heyer, Gruel & Associates; **Nicholas Meurer**, J. Caldwell & Associates; **Sabrina Arauz**, Sustainable Jersey Operations Team; **Tanya Rohrbach**, Sustainable Jersey Policy & Planning Team

CEUs: CRP, 1.0 Classroom; CMFO/CCFO, 1.0 Office Management and Ancillary Subjects; CTC, 1.0 General/Secondary; CPWM, 1.0 Management; RMC, 1.0 Professional Development; QPA, 1.0 Office Admin./General Duties; 1.0 Public Health

ASK THE COMMUNITY ENERGY PLANNING (CEP) EXPERTS (DROP-IN COACHING SESSION) SJ • Electron

This drop-in coaching session pairs Sustainable Jersey's Energy Technical Assistance Team with CEPG Program Year 3 towns to help navigate planning requirements, complete workplan templates, and strategize on stakeholder engagement. Those involved in their town's Community Energy Planning Grant may drop in during this open session to ask questions and receive real time assistance as they move their plans forward.

Poornima Gupta, Sustainable Jersey Energy Team; **Tori Bearden**, Sustainable Jersey Energy Team

CEUs: CRP, 1.0 Classroom; CMFO/CCFO, 1.0 Office Management and Ancillary Subjects; CTC, 1.0 General/Secondary; CPWM, 1.0 Management; RMC, 1.0 Professional Development; QPA, 1.0 Green Purchasing

SJS = session has schools related content

SJ = session content relates to municipal certification program

SUSTAINABILITY SESSIONS: 1:45 - 2:45pm

LEARNING BEYOND WALLS: EXPANDING ACCESS TO NATURE, SEL, AND BELONGING **SJS** • **Cube**

This session highlights how New Jersey schools are leveraging nature-based experiences and outdoor classroom activities to increase student engagement and strengthen social-emotional learning. Participants will explore how authentic learning in green spaces can support diverse learners, including students in alternative programs, while fostering connection, regulation, and a sense of belonging. The session will also examine how these experiences help students see themselves reflected in environmental spaces and future career pathways, empowering them to be active participants in conservation and stewardship efforts that are more inclusive and representative of their communities.

Sarah Sterling, NJ Dept. of Education Office of Climate Change Education; **Tristian M. Cox, Ed.D.**, Plainfield Public Schools District
CEUs: CRP, 1.0 Classroom; QPA, 1.0 Office Admin./General Duties

PLUG INTO ENERGY FUNDING FOR MUNICIPALITIES & SCHOOLS **SJ, SJS** • **Electron**

There's no shortage of energy funding opportunities, but knowing where to start (and how to stack programs) can be the hardest part. Join us for a practical, example-driven session featuring updates from New Jersey Board of Public Utilities and New Jersey Economic Development Authority, plus insights from people who have recently delivered on funded projects that made a big impact. Walk away with funding strategies, ready-to-use resources, and a clearer path to powering your next energy initiative.

Christopher Barker, PSE&G; **Nathalie Roccatti**, TRC/NJ Clean Energy Program; **Sean Sonnemann**, NJEDA Department of Clean Energy

CEUs: CRP, 1.0 Classroom; CMFO/CCFO, 1.0 Budgeting; CTC, 1.0 General/Secondary; CPWM, 1.0 Management; RMC, 1.0 Finance; QPA, 1.0 Green Purchasing

ROOTED IN SUSTAINABILITY: HEALTHY LANDSCAPES AND SMART PURCHASING FOR MUNICIPALITIES **SJ** • **Thesis**

How "green" are your municipal operations? We'll explore the best resources for green purchasing and landscaping practices that support soil health, water conservation, non-toxic pest management, biodiverse and adaptive plant selection, and sustainable leaf and turf maintenance.

Rich Kerr, Evesham Township; **Thomas C. Flynn**, MPA, CFM, Woodbridge Township Division of Engineering; **Tracey Woods**, Sustainable Jersey Energy Team

CEUs: CRP, 1.0 Classroom; CMFO/CCFO, 1.0 Office Management and Ancillary Subjects; CPWM, 1.0 Technical; RMC, 1.0 Professional Development; QPA, 1.0 Green Purchasing

STATE LEGISLATION + LOCAL SUSTAINABILITY EFFORTS = COLLECTIVE IMPACT **SJ, SJS** • **Bell Theater**

The recent flurry of bills signed at the start of the year included several environmentally-focused laws, now in effect or soon-to-come. How do they impact your efforts on the ground? We will hear from experts on the roll out and local implementation efforts of the new Skip the Stuff Law (S3195), Invasive Species Management Act (S1029), and County Food Waste Recovery Plan Act (S2426).

Assemblywoman Alixon Collazos-Gill (LD27), Assembly Environment and Solid Waste Committee; **Alessia Eramo**, Morris County Municipal Utilities Authority; **Lois Kraus**, Beyond Plastics; **Mike Van Clef**, Friends of Hopewell Valley Open Space; **Randall Solomon**, Sustainable Jersey

CEUs: CRP, 1.0 Classroom; CMFO/CCFO, 1.0 Office Management and Ancillary Subjects; CTC, 1.0 General/Secondary; CPWM, 1.0 Government; RMC, 1.0 Professional Development; QPA, 1.0 Office Admin./General Duties; 1.0 Public Health; 1.0 NJCCC

ASK THE MUNICIPAL CLIMATE DATA EXPERTS (DROP-IN COACHING SESSION) **SJ** • **Quantum**

You've got questions? Our experts have the answers! If you are currently working to understand your community's climate change hazards, like the current & future impacts of flooding and heatwaves, or need to know what data and tools are available to help you assess your community's climate vulnerabilities, we will have municipal planners and GIS specialists on hand to answer your questions.

Daniel Gilkeson, Michael Baker International; **David Wangkyu Kim**, LRK Architects; **Thomas Hopper**, Princeton Hydro

CEUs: CRP, 1.0 Classroom; CMFO/CCFO, 1.0 Office Management and Ancillary Subjects; CPWM, 1.0 Management; RMC, 1.0 Professional Development; QPA, 1.0 Office Admin./General Duties

SJS = session has schools related content

SJ = session content relates to municipal certification program

Quantum and **Thesis** are smaller sized rooms with limited capacity. Refer to page 2 for a map of room locations.

SUSTAINABILITY SESSIONS: 3:00 - 4:00pm

COMPLETE STREETS: FROM TEMPORARY TO TRANSFORMATIONAL SJ, SJS • Thesis

Want to make streets safer without waiting years for a full redesign? Temporary Demonstration Projects offer an affordable way to test roadway safety ideas quickly and build community support. This session will highlight programs, partners, and resources that help municipalities and schools plan, install, and evaluate projects using real-world conditions—not just drawings and renderings.

Anya Saretzky, Cross County Connection Transportation Management Association; **Gabrielle Bennett-Meany**, Township of Belleville; **James Sinclair**, Alan M. Voorhees Transportation Center; **Lisa Lee**, MCRS, MPA, M.Div., EZ Ride
CEUs: CRP, 1.0 Classroom; CMFO/CCFO, 1.0 Office Management and Ancillary Subjects; CPWM, 1.0 Management; RMC, 1.0 Professional Development; QPA, 1.0 Office Admin/General Duties

FOOD WASTE MANAGEMENT: NEW STATE REQUIREMENTS & LOCAL PROGRAM SPOTLIGHTS SJ • Bell Theater

Food waste management is entering a new phase in New Jersey. Recently enacted legislation directs the New Jersey Department of Environmental Protection to develop a tiered regulatory framework for composting facilities and requires counties to incorporate food waste management into their waste management plans. This session will review what's known so far and feature local program spotlights on food waste collection programs, highlighting program design, partnerships, and lessons learned.

Amy Entin, NJDEP Bureau of Solid Waste Planning and Licensing; **Lorijean Moody**, Borough of Glen Ridge Council; **Sean Hamlin**, Village of Ridgewood
CEUs: CRP, 1.0 Classroom; 1.0 Public Health

SUSTAINABLE JERSEY BOOTCAMP: PRACTICAL HOW-TO'S FOR NEW MUNICIPALITIES & SCHOOLS SJ, SJS • Cube

Are you new to the Sustainable Jersey program? Is your community applying for a Sustainable Jersey grant for the first time? Is your green team revitalizing after a few years off? If the answer is yes to any of those questions, please join Sustainable Jersey and Sustainable Jersey for Schools staff for this session to learn about strategies, tips, and resources to help you make the most of what the program has to offer. There will be ample time to answer questions and opportunities for participants to share their experiences. Together, we will help you get your green team in shape for future certification and grant applications!

Em Boxer, Sustainable Jersey Grants Program; **JoAnna Contarino**, Sustainable Jersey for Schools; **Maureen Jones**, Sustainable Jersey Operations Team

CEUs: CRP, 1.0 Classroom; CMFO/CCFO, 1.0 Office Management and Ancillary Subjects; CTC, 1.0 General/Secondary; CPWM, 1.0 Management; RMC, 1.0 Professional Development; QPA, 1.0 Green Purchasing; CEFM, 1.0

WATT'S NEXT? EMERGING ENERGY PRACTICES SJ, SJS • Quantum

As New Jersey communities advance toward a cleaner, more resilient energy future, emerging technologies and practices are creating new opportunities to accelerate progress and sustain long-term success. This session will explore technologies on the horizon—from advanced energy storage to new clean energy financing tools. Join us to navigate the new energy landscape.

David Kois, PP, AICP Hillsborough Township; **Jesse Kolodin, Ph.D.**, NJBPU Division of Clean Energy; **Mike Winka**, MRW NRG Transition LLC; **Poornima Gupta**, Sustainable Jersey Energy Team

CEUs: CRP, 1.0 Classroom; CMFO/CCFO, 1.0 Office Management and Ancillary Subjects; CPWM, 1.0 Management; RMC, 1.0 Professional Development; QPA, 1.0 Office Admin/General Duties; CEFM, 1.0; 1.0 Public Health



SUSTAINABLE JERSEY ENERGY RESOURCES





EXPLORE OUTDOORS!

Outside the Ballroom,
a world awaits...

Lawn Equip Demo

Try out some electric lawn equipment
10am-3pm

Native Plant Sale

It's your chance to
take home some natives
12pm-4:30pm

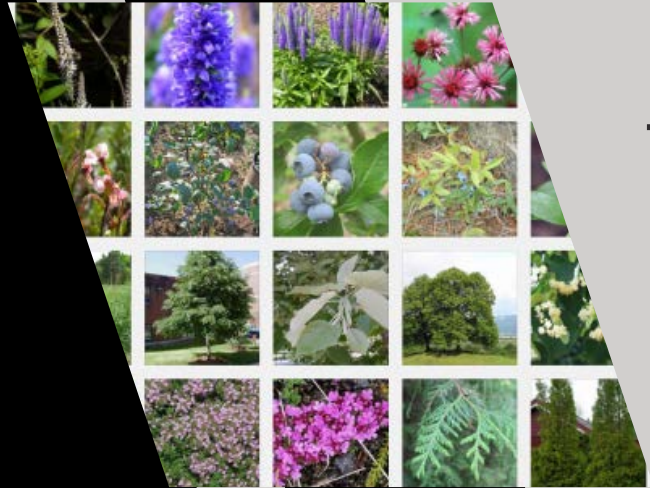
Fleet Showcase

Electric minibus, pick ups,
step vans, mobile & V2V
charging units & more
10am-3pm

Free ice cream
at the Showcase **during lunch!**
while supplies last

Ride & Drive

Test drive the hottest
EVs on the market
10am-3pm



ENVIRONMENTAL STEWARDSHIP COMES NATURALLY

As stewards of the earth's most precious natural resource, we know the importance of protecting our water supplies. In that regard, we're proud to support Sustainable Jersey. For watershed protection and wise water use tips, visit newjerseyamwater.com.



Scan to learn more about what we're doing to protect our source water supplies.



NEW JERSEY
AMERICAN WATER

WE KEEP LIFE FLOWING®

Why should municipalities care about community solar?

This NJ state benefit program uses a shared solar project located on warehouses, rather than on any individual rooftops. Customers in your community (including homeowners and renters) can subscribe to shares of the energy generated by the system and receive savings on their utility bill.

"The Township of Union has partnered with Dimension Energy to bring community solar to our residents, and the results have exceeded expectations. With over 400 households enrolled to date, our community is seeing a combined annual savings of more than \$240,000—all without the need for rooftop panels or upfront costs." - Carlos Sanchez, Union Township Economic Development Director



Reach out to learn how your community can take advantage
ekitterman@dimension-energy.com

Making clean energy work for everyone



Franklin Borough, New Jersey
4.34 MW
Serving 849 households
Average savings of \$250/yr



**ENGAGE YOUR RESIDENTS.
EMPOWER YOUR COMMUNITY.**

**DOWNLOAD
TODAY**



We'll lead you
to **savings**

Your preferred contractor for the Direct Install Closed Network with South Jersey Gas and Elizabethtown Gas

CMC Incentive Navigator helps NJ businesses cut the costs of energy efficiency upgrades by up to 50%+. We find the incentives, rebates, and utility financing so you get the savings without the hassle.

As a trade ally with NJ utilities, we guide you through the process to provide:



Up to 50%+ of total project costs with utility incentives



0% financing for qualifying project balances



No-cost, on-site energy assessments



End-to-end project management

See what your business qualifies for.

1-877-700-2620
njee@cmcenergy.com
cmcenergy.com/in-nj

Reworld™

**From all of us at Reworld,
we are excited to
celebrate sustainability
with community
champions who lead the
way toward a cleaner,
greener New Jersey.**

WWW.REWORLDWASTE.COM





Healthy meals grow
healthy kids!

Maschio's Food Services, Inc.
525 E. Main Street
Chester, NJ 07930
(973) 598-0005
info@maschiofood.com
www.maschiofood.com

FOLLOW US:
[@maschiofood](#)
f i X y in

To a brighter future

We appreciate the power of working together to build a stronger community for all.

Jersey Central
Power & Light
A FirstEnergy Company

FirstEnergy
Foundation

NJM Insurance
Group

AUTO. PROPERTY. BUSINESS.



WE SUPPORT THE COMMUNITIES WE
ARE PRIVILEGED TO SERVE.

NJM Insurance Group
is proud to support
Sustainable Jersey

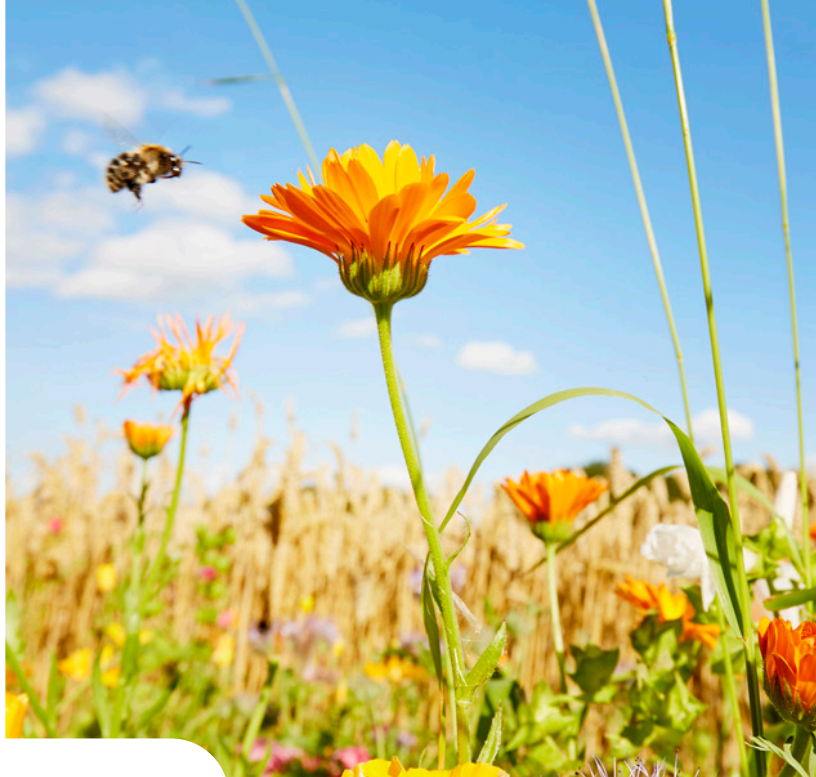
FOR A QUOTE, VISIT NJM.COM



We are proud to partner with **Sustainable Jersey** on municipal and community energy initiatives that support a better tomorrow, one community at a time.



Rockland Electric Company



Learn how to save more on energy-efficiency and building-decarbonization.

SHOWCASE YOUR WORK!



SUCCESS STORIES CONTEST

WHAT IS THE SUCCESS STORIES CONTEST?

The Sustainable Jersey Success Stories Contest highlights municipalities implementing impactful sustainability projects. Communities are invited to submit projects that demonstrate leadership, creativity, and impact, with selected finalists presenting at the Sustainable Jersey Annual Luncheon.

AWARDS

- 1st Place – \$2,000
- 2nd Place – \$1,000
- 3rd Place – \$500

NOTE: Municipalities may submit multiple projects for consideration, but only one project will be selected.

SHARE YOUR MUNICIPALITY'S SUCCESS STORY!

Submission Deadline:
June 22, 2026

Visit the website to learn more:
bit.ly/SJSuccessStoriesContest



- BUILDINGS
- ENERGY EFFICIENCY
- EDUCATION & WORKFORCE
- ENERGY GENERATION
- FOOD SYSTEMS & WASTE
- INDUSTRY
- RESILIENCE
- TRANSPORTATION



njonestopshop.org



FIND FUNDING FOR ECO-FRIENDLY PROJECTS

SUSTAINABILITY SUMMIT FUNDERS



2026 SUSTAINABILITY SUMMIT



THANK YOU TO ALL OF OUR
SUMMIT SUPPORTERS & SPONSORS



SUSTAINABILITY EXHIBIT DIRECTORY

Exhibitors in the Ballroom

GET YOUR PASSPORT STAMPED. WIN A PRIZE!

- Visit the tables with logos on this list to get your passport stamped. Don't forget about the outside vendors on the lawn & in the Fleet Showcase (Red Lot)!
- Drop your completed Passport off at **Help Desk by 3:30pm** to earn a chance at a prize.
- Prizes will be drawn at **4:05pm in the Bell Theater**. You must be present to win. Priority prize drawings for those completing both sides of the passport card.

- | | | | |
|--|--|---|--|
| <ul style="list-style-type: none"> 1. DEP Drive Green 2. Solar Landscape 3. Good Energy 4. EZ Ride 5. Bayshore Recycling 6. Hendrickson Fleet Solutions 7. Voorhees Transportation Center (Rutgers) 8. Rockland Electric 9. New Jersey American Water 10. New Jersey Natural Gas 11. Joule Assets 12. Dimension Energy 13. Mazza Recycling 14. Proton Group 15. Solar United Neighbors 16. EcoClean Guardians 17. New Jersey Prevention Network | <ul style="list-style-type: none"> 18. The Aubrey Group 19. Atlantic County Utilities Authority 20. Veolia Water New Jersey 21. Taurus Advisory Group 22. Kempower 23. Drop the Beet Farms 24. Fairgrown Farm 25. NJ Composting Council 26. Share My Meals 27. BE Equipment 28. NJ Clean Communities Council 29. Heliox, a Siemens Business 30. Stark Tech 31. Evergreen Energy 32. Evergreen Energy 33. Java's Compost 34. Solar Simplified 35. Ecotech Management 36. Reworld | <ul style="list-style-type: none"> 37. Pinelands Alliance 38. Clean Ocean Action 39. FoodCorps 40. Jersey Central Power & Light (JCP&L) 41. Brightcore Energy 42. Vanguard Building Solutions 43. Avenues in Motion 44. Beyond Plastics NJ 45. ANJEC 46. New Jersey LCV 47. Plan4HealthNJ 48. Table to Table 49. SJI Renewable Energy Ventures 50. Trane 51. TerraCycle 52. CPower 53. Bryan Electric 54. CMC Energy Services | <ul style="list-style-type: none"> 55. Elizabethtown Gas 56. South Jersey Gas 57. CM3 Building Solutions 58. Healthy Schools Now 59. DEP Bureau of Sustainability 60. Maschio's Food Services 61. USGBC Center for Green Schools 62. New Jersey Clean Energy Program 63. Sustainable Jersey 64. Sustainable Jersey for Schools 65. PSE&G 66. Tri-State Energy 67. Floor Cycle by the Flooring Foundation Corp. 68. NJM Insurance Group 69. HYDR8 (located in front lobby) |
|--|--|---|--|