

# Revealing the Hidden Impacts of Health

**Managing the Local Actions That  
Determine Health Outcomes**

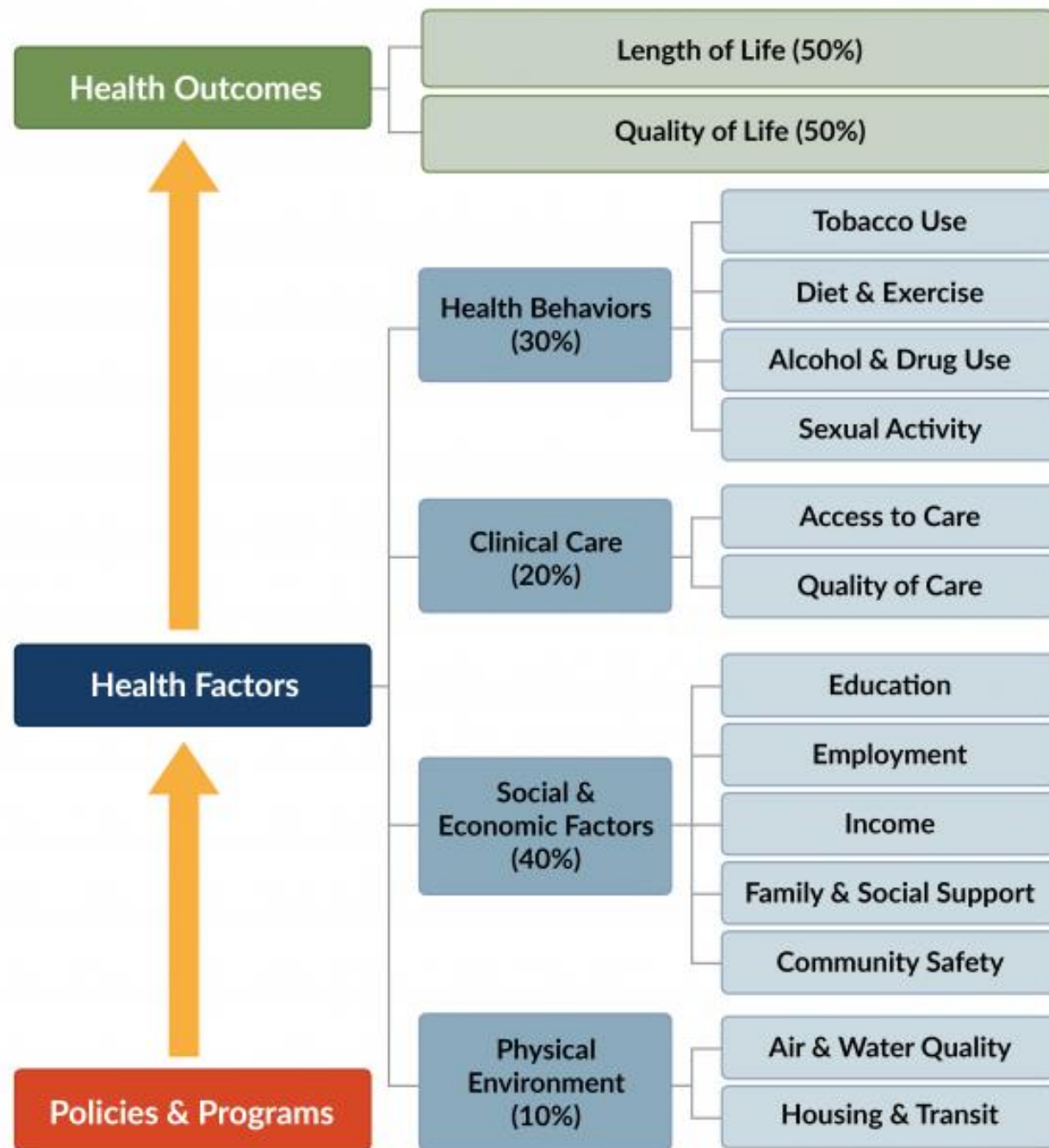
“(We need to) stop thinking of health as something we get at the doctor’s office but instead as something that starts in our families, in our schools and workplaces, in our playgrounds and parks, and in the air we breathe and the water we drink. The more you see the problem of health this way, the more opportunities you have to improve it. Scientists have found that the conditions in which we live and work have an enormous impact on our health, long before we ever see a doctor.”

—Robert Wood Johnson Foundation

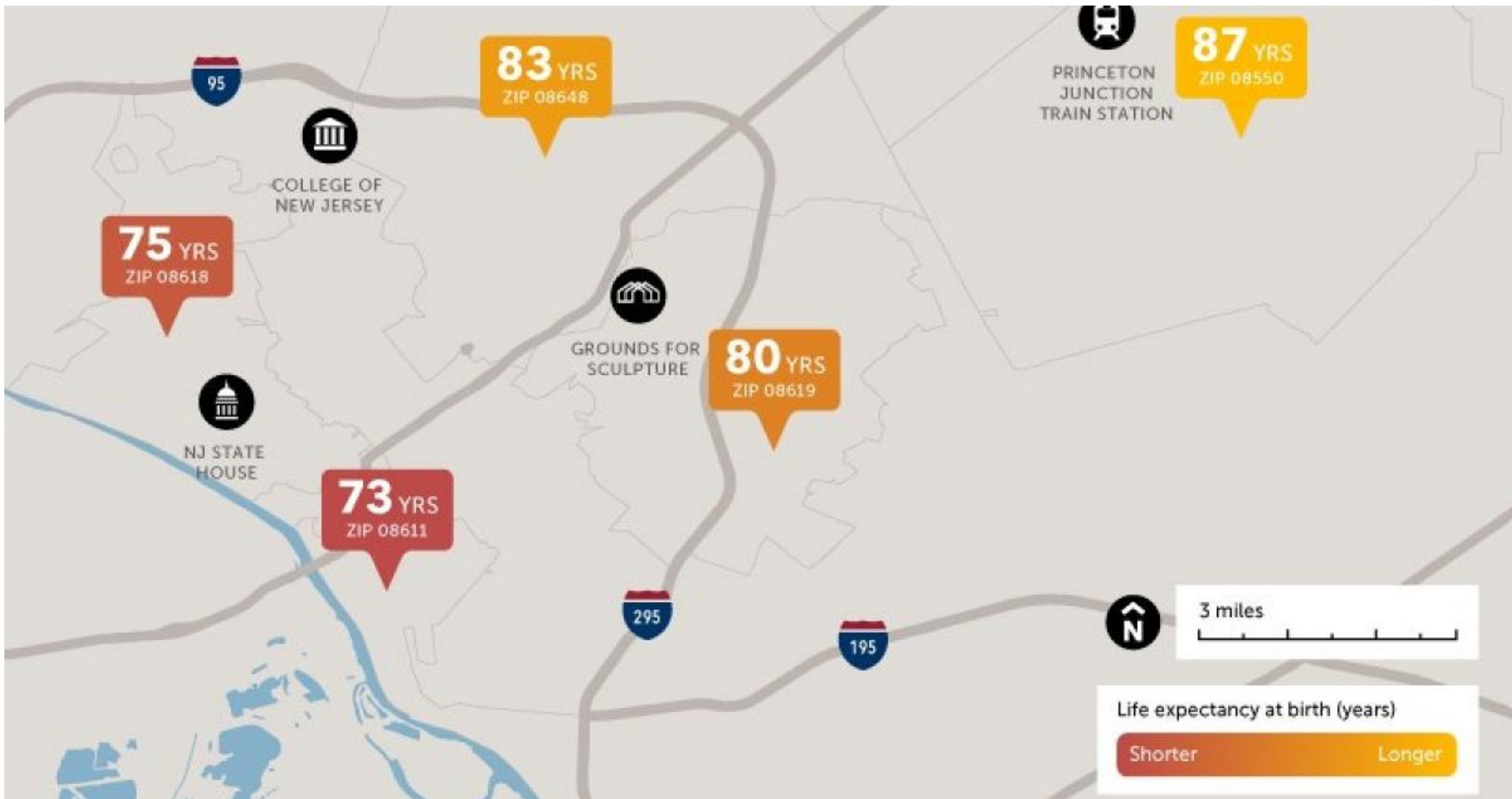


Transforming the conditions in which people are  
**BORN, GROW, LIVE, WORK and AGE**  
for optimal health, mental health & well-being.









# SJ Local Health Assessment

## 1g. Environmental Quality Indicators:

	Municipal Level	County/Regional/State Level for comparison purposes
# of known contaminated sites ( <a href="#">NJ Flood Mapper Municipal Snapshot</a> )		
# of EPA Superfund sites ( <a href="#">NJ Flood Mapper Municipal Snapshot</a> )		
% of population living in a Census tract identified as “Overburdened Community” by the NJDEP? <a href="https://www.nj.gov/dep/ej/communities.html">https://www.nj.gov/dep/ej/communities.html</a>		

*\*Add rows as necessary. Your municipality may have municipal level data on other environmental quality indicators such as level of particulate matter in the air, level of contaminants in community water supplies, and other air/water quality issues, etc.*

## 1h. Individual Wellness Indicators:

	Municipal Level	County/Regional/State Level for comparison purposes
# of health & wellness events open to the public and taken place within past year (hosted by municipality or community organization)		
# of hospitals within 5-10 miles from municipal border ( <a href="#">NJHA map</a> )		
# of parks and open green spaces		
# of public spaces where people can gather safely and freely		
Most recent rates of crime (murder, rape, robbery, assault, burglary, larceny, auto theft, etc.) (NJ State Police <a href="#">Uniform Crime Reports</a> )		
Most recent # of incidences of domestic violence (NJ State Police		

## 1d. Housing Indicators:

	Municipal Level	County/Regional/State Level for comparison purposes
Unhoused individuals (% of total population) <a href="https://monarchhousing.org/nj-counts">monarchhousing.org/nj-counts</a>		
Sheltered unhoused individuals (% of total population) <a href="https://monarchhousing.org/nj-counts">monarchhousing.org/nj-counts</a>		
Renter occupied housing (% of total households) ( <a href="https://censusreporter.org">census reporter.org</a> )		
Mobile homes (% of total households) ( <a href="#">NJ Flood Mapper Municipal Snapshot</a> )		
Housing vacancy rate ( <a href="https://censusreporter.org">censusreporter.org</a> )		
Age of housing stock - Reflects the number of housing units built in the municipality prior to 1978, which pose the risk of exposure to lead paint. ( <a href="#">U.S. Census Quickfacts</a> )		

*\*Add rows as necessary. Your municipality may have municipal level data on other indicators related to safe and accessible housing.*

## 1e. Transportation Indicators:

	Municipal Level	County/Regional/State Level for comparison purposes
# of public transit options (bus lines, train or light rail stops)		
% of municipal vehicle fleet using alternative fuel		
Households lacking private vehicles (% of households) ( <a href="#">NJ Flood Mapper Municipal Snapshot</a> , tool to locate transportation disadvantaged people		

# Sustainable Jersey Summit Sponsors and Partners

## Corporate Sponsors

### Platinum



**PSEG**



**New Jersey  
Natural Gas**



**SOUTH JERSEY  
GAS**



**ELIZABETHTOWN  
GAS**

### Gold

**amazon**

**solar**  
landscape

### Silver

**NJM** Insurance  
Group



**Atlantic  
Health System**

**FirstEnergy**  
Foundation



**NEW JERSEY  
AMERICAN WATER**

**BAYSHORE**  
Family of Companies

# Sustainable Jersey for Schools Summit Sponsors and Partners

## Corporate Sponsors

### Platinum



### Gold





# SUSTAINABILITY SUMMIT

