

On the Frontlines of Climate Change:

What Municipalities Can Do

June 24, 2022

Agenda

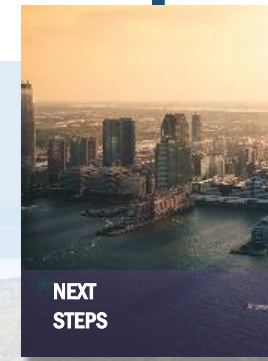
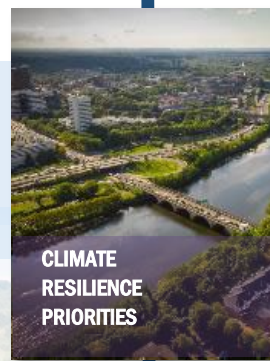
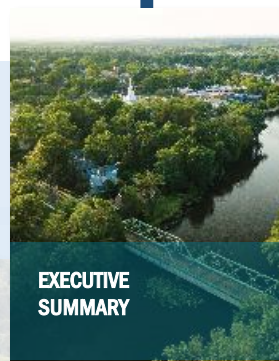
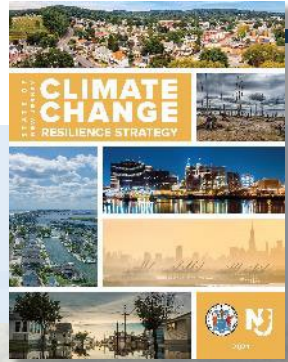
1. Welcome
2. Policy Framework
3. Emerging Approaches
4. Existing Resources
5. Questions and Answers



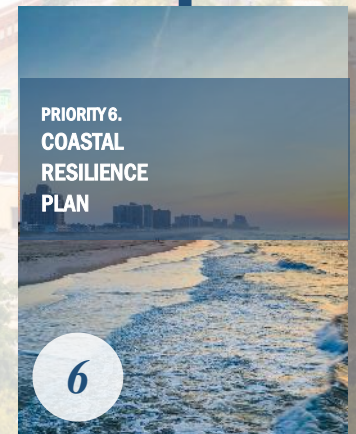
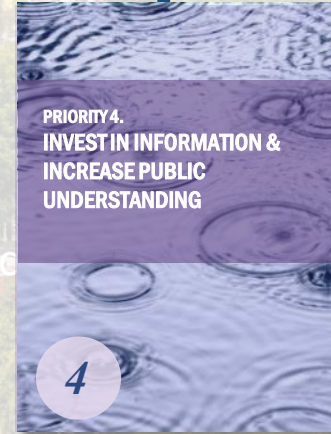
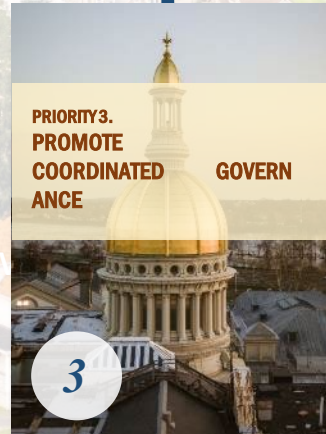
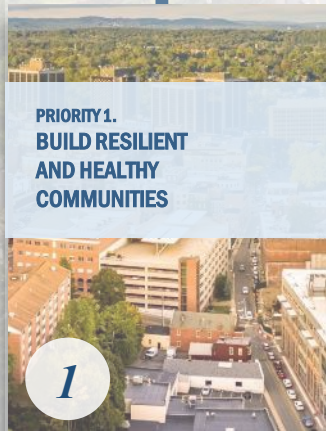


Meghan Leavey, PP/AICP/GISP
Resilient NJ Program Coordinator
Climate Resilience Planning
NJ Dept. of Environmental Protection





CLIMATE RESILIENCE PRIORITIES



**Build
Resilient
and Healthy
Communities**



**Strengthen
the Resilience
of New Jersey's
Ecosystems**



**Promote
Coordinated
Governance**



**Invest in
Information &
Increase Public
Understanding**



**Promote
Climate-Informed
Investments &
Innovative Financing**



**Coastal
Resilience
Plan**

COORDINATED RESILIENCE ACTION

State Agency Action

- *Implement the Statewide Climate Resilience Strategy*
- *Active and engaged Interagency Council on Climate Resilience*

DEP Policy Areas

- *DEP Climate Action Plan*
- *Leverage and link regulatory, planning, and acquisition programs*

Community Guidance and Assistance

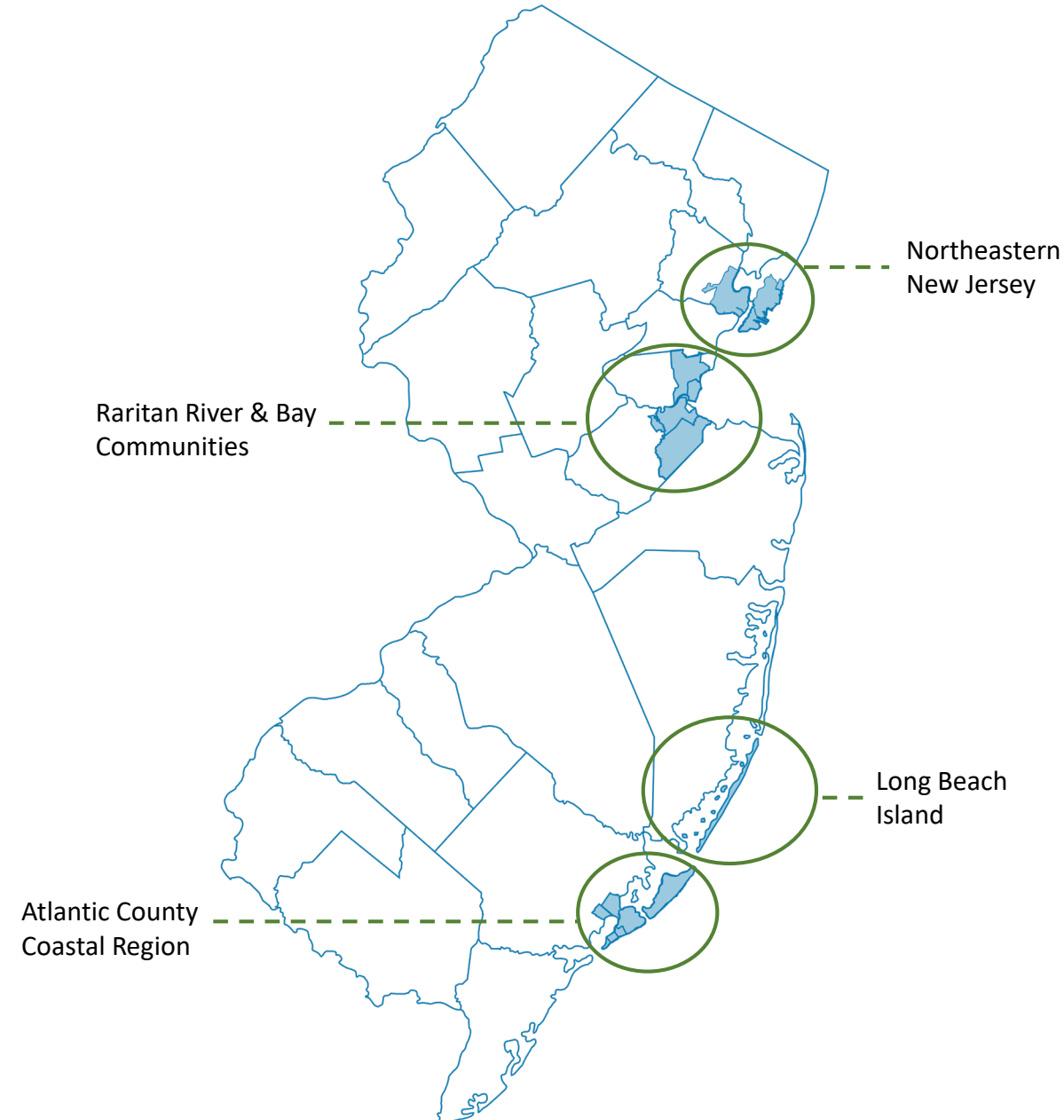
- *Comprehensive guidance, mapping, training*
- *Technical assistance program*



RESILIENT

- **Northeastern New Jersey:** Jersey City, Newark, Hoboken & Bayonne
- **Long Beach Island:** Long Beach Township, Beach Haven, Ship Bottom, Surf City, Harvey Cedars, & Barnegat Light
- **Raritan River & Bay Communities:** Woodbridge, Perth Amboy, Sayreville, Old Bridge, Carteret, & South Amboy
- **Atlantic County Coastal Region:** Ventnor, Margate, Longport, Atlantic City, Brigantine, Pleasantville, & Northfield

<https://resilient.nj.gov>



RESILIENT NJ



*Providing Science
and Data*



*Supporting
Engagement*

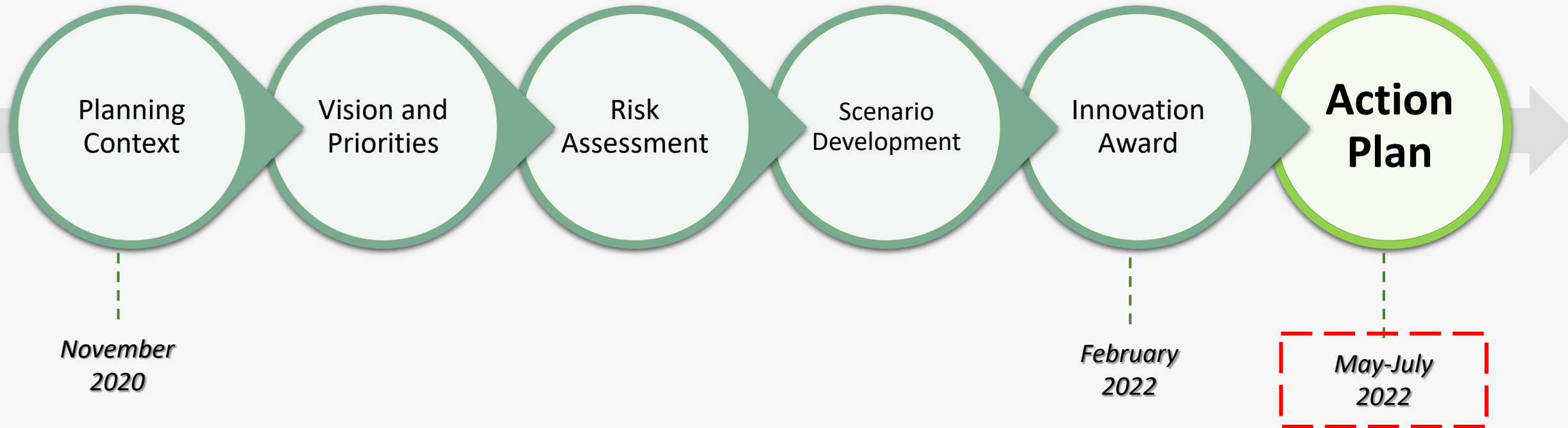


*Assessing
Vulnerability*



*Identifying
Solutions*

REGIONAL PLANNING PROCESS



MUNICIPAL ASSISTANCE PROGRAM

- Direct resilience planning assistance to individual municipalities in the coastal zone for development of a local climate resilience strategy and/or climate change-related hazard vulnerability assessment
- Inaugural funding award: \$400,000 across five municipalities:
 - Ocean Township (Ocean County)
 - Salem
 - Stafford Township
 - Trenton
 - Upper Township

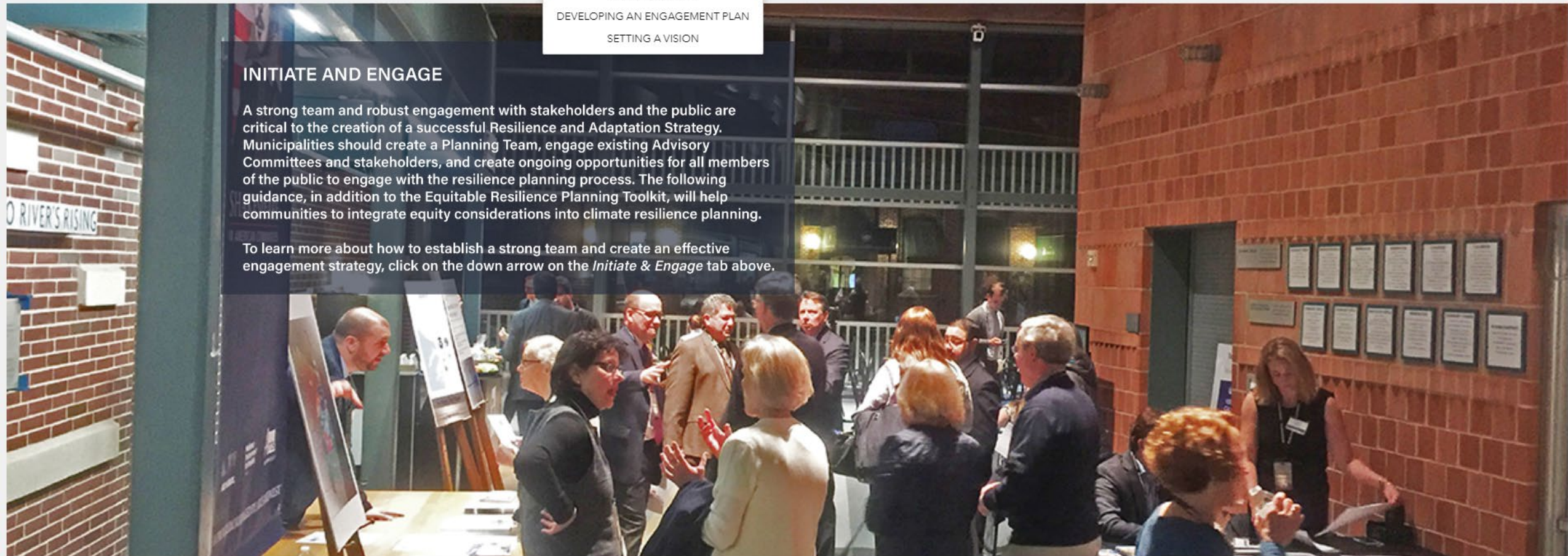
RESILIENT NJ: LOCAL PLANNING FOR CLIMATE CHANGE TOOLKIT

[BUILD THE TEAM](#)[DEVELOPING AN ENGAGEMENT PLAN](#)[SETTING A VISION](#)

INITIATE AND ENGAGE

A strong team and robust engagement with stakeholders and the public are critical to the creation of a successful Resilience and Adaptation Strategy. Municipalities should create a Planning Team, engage existing Advisory Committees and stakeholders, and create ongoing opportunities for all members of the public to engage with the resilience planning process. The following guidance, in addition to the Equitable Resilience Planning Toolkit, will help communities to integrate equity considerations into climate resilience planning.

To learn more about how to establish a strong team and create an effective engagement strategy, click on the down arrow on the *Initiate & Engage* tab above.



STORYMAP – TAB 2: INITIATE AND ENGAGE



RESILIENT N

OVERVIEW 1. INITIATE & ENGAGE 2. UNDERSTAND YOUR VULNERABILITY 3. DEVELOP A STRATEGY

INITIATE AND ENGAGE > DEVELOPING AN ENGAGEMENT PLAN

THE ENGAGEMENT PLAN BUILD A STRONG COMMUNICATION PLAN CREATE INCLUSIVE AND EQUITABLE ENGAGEMENT

CREATE INCLUSIVE AND EQUITABLE ENGAGEMENT

Communities should strive for demographically representative engagement that reflects the community or region where planning is occurring. This may entail special efforts to reach out and engage groups that traditionally have not participated in such work, status, age, education levels, mobility limitations or other disabilities, or cultural and ethnic differences. A Planning Team should continually self-evaluate how it has engaged the community, and socially vulnerable people specifically, to keep the process on track. It is also crucial that a Planning Team and community representatives conduct thoughtful evaluation of implementation efforts and impacts once projects are implemented on the ground.

CONSIDER THE FOLLOWING FOR MAINTAINING INCLUSIVITY:

Strive for demographically representative engagement that reflects the community or region where planning is occurring. This may entail special efforts to reach out and engage groups that traditionally have not participated in such work, for reasons like geography, economic status, age, education levels, mobility limitations or other disabilities, or cultural and ethnic differences.

COMMUNITY CHAMPION PARTICIPATION

Community champions and trusted agents (local leaders, community representatives, community-based organizations etc.) should be constantly engaged throughout the planning process and, when appropriate, representation for socially vulnerable populations. If unable to attend all engagements, these community champions could be notified of key project/planning milestones and consulted for feedback regarding equitable engagement, resilience strategy development and/or future implementation.

BARRIERS TO AND OPPORTUNITIES FOR SOCIALLY VULNERABLE POPULATIONS

What factors could make attending or participating in planning meetings/events more difficult or impossible for socially vulnerable populations? Asking questions to identify and mitigate potential barriers to participation in resilience planning for socially vulnerable populations. Try to also consider how resilience planning opportunities for socially vulnerable populations to share their knowledge/expertise, lead and empower other community members, and to showcase and celebrate their contributions.

COLLABORATIVE ACTION AND DECISION-MAKING

Strive for highly participatory and collaborative engagements with socially vulnerable populations. Create spaces and opportunities for socially vulnerable populations to engage in hands-on activities relevant to the resilience planning engagements. Asset mapping and visioning are just two types of engagement sessions that could be used instead of direct lecturing about a community's vulnerability or presenting data and information simply through slideshow presentations. Get creative to make resilience planning accessible to socially vulnerable populations so that they are much more likely to stay engaged throughout the planning process.

WORKSHEETS, TEMPLATES, AND OTHER RESOURCES

- Equitable Community Resilience Evaluation Toolkit
- A Seat at the Table Online Training

Open house with demographically representative engagement



CREATE ROBUST AND EQUITABLE ENGAGEMENT

- ☐ Building a Team
 - ☐ Planning Team, Advisory Committees, Stakeholders, and Public
 - ☐ Identifying Stakeholders
 - ☐ Representation and Inclusion
- ☐ Building An Engagement Strategy
 - ☐ Focus on Equity and Inclusion
 - ☐ Templates and Examples
- ☐ Setting the Vision
 - ☐ Visioning is Important
 - ☐ Gathering Community Input
 - ☐ Create a Vision with Climate Change



Environmental Justice

- NJDEP Office of Climate Resilience Planning
 - Partnering with Rutgers to develop guidance for municipal environmental justice action plans
 - Working together to make sure the guidance fits into other state planning efforts like the climate-change related hazard vulnerability assessment
- NJ State EJ Efforts
 - Public comment period is open for EJ law draft rules. Four public hearings are scheduled.
 - New GIS-based tool – **EJMAP**
 - Intended to provide the public with a visual representation of:
 - Location of OBCs throughout the State; and
 - Presence of environmental and public health stressors in each OBC; and
 - Stressors in each OBC compare on a State and County basis, both individually and cumulatively.



Amendments to the Municipal Land Use Law

“...analyze current and future threats to, and vulnerabilities of, the municipality associated with climate change-related natural hazards, including, but not limited to increased temperatures, drought, flooding, hurricanes, and sea-level rise”

“...rely on the most recent natural hazard projections and best available science provided by the New Jersey Department of Environmental Protection.”

*Effective immediately, municipalities are required to incorporate a **climate change-related hazard vulnerability assessment** into any Master Plan Land Use Element adopted after the signing.*

CLIMATE RESILIENCE PLANNING: MUNICIPAL PLANNING & TECHNICAL ASSISTANCE PROGRAMS

Resilient NJ Regional Planning Projects

- Northeastern NJ
- Long Beach Island
- Raritan River & Bay Communities
- Atlantic County Coastal Region

Resilient NJ Municipal Assistance Program

- Incentivizes resilience planning and implementation for individual municipalities

Resilience Accelerator

- FEMA/NJ partnership providing technical assistance and subject matter expertise to jump-start community projects and long-term resilience initiatives

Online Toolkits

- Resilient NJ Local Planning for Climate Change Toolkit
- A Seat at the Table: Training for Whole-Community Resilience Planning

Blue Acres 3.0

- Resilience program, not just disaster response program
- Proactive, community-wide planning

Resilient NJ: Resilience Guidance & Assistance Program



Resilience GAP – *“Fill the Resilience GAP”*

- Facilitated by NJDEP and FEMA
- Design, develop, and deliver a comprehensive package of guidance, tools, and trainings for municipal governments to incorporate climate resilience into their regulatory program
- Technical assistance program for municipalities
- Coordinate, organize, and direct NGOs and academic institutions in this effort

Develop uniform
guidance and
criteria for
municipal resilience
planning

Guidance should be:

- Consistent with the most accurate, up-to-date climate science
- Consistent with NJ rules and regulations
- Easily accessible and developed with the intention of building capacity

RESILIENCE GAP: OBJECTIVES

- ✓ Develop resilience planning guidance
- ✓ Enhance NJADAPT to support the use of Resilience GAP
- ✓ Update Sustainable Jersey actions
- ✓ Develop municipal resilience database
- ✓ Develop and host trainings
- ✓ Municipal planning and technical support

Regional Greenhouse Gas Initiative

- RRGi Strategic Funding Plan
 - Vote on Climate Change Solutions in:
 - Transportation
 - Residential, Commercial, Industrial Buildings
 - Energy Grid
 - Organic Waste Reduction
 - Forests & Wetlands
 - Participate by July 11
- <https://nj.gov/rggi/ideas.html#vote-now>

HAVE A SAY ON CLIMATE CHANGE

Vote on your priorities for reducing greenhouse gases
and fight climate change in New Jersey!




SCAN THIS CODE
TO VOTE NOW



NJEDA
ECONOMIC DEVELOPMENT AUTHORITY



    @newjerseydep  @nj.dep



Contact

Meghan Leavey, PP, AICP, GISP

Resilient NJ Program Coordinator | Bureau of Climate Resilience Planning
meghan.leavey@dep.nj.gov

On the Front Lines of Climate Change: What Municipalities Can Do

Tanya Rohrbach
2022 Sustainability Summit
June 24, 2022





NEW JERSEY FUTURE



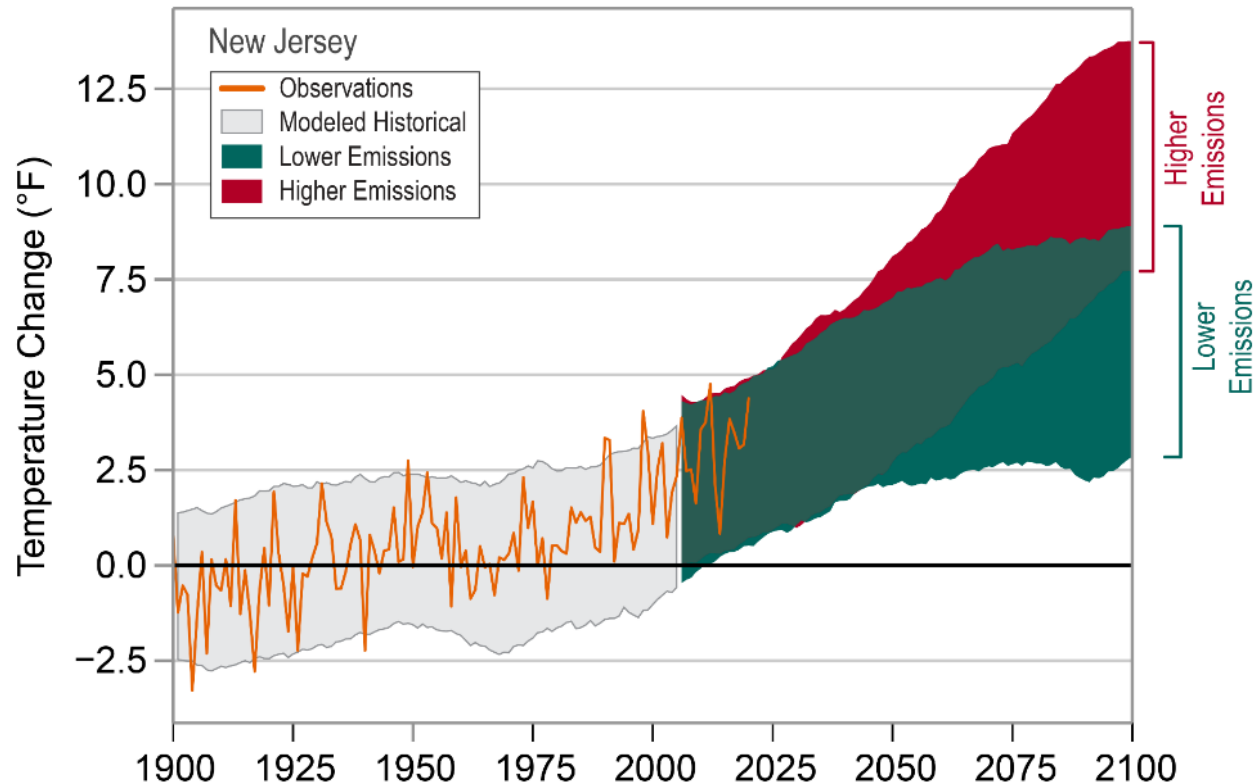
Vulnerability

- **Exposure** - The extent people, places, or systems are touched by or in contact with or disturbed by a hazard.
- **Sensitivity** - The extent that they can experience harm from that exposure
- **Adaptive Capacity** - The extent people or systems can respond to and learn from disturbances to mitigate the causes and the impacts of climate-related hazards



Adaptive Capacity

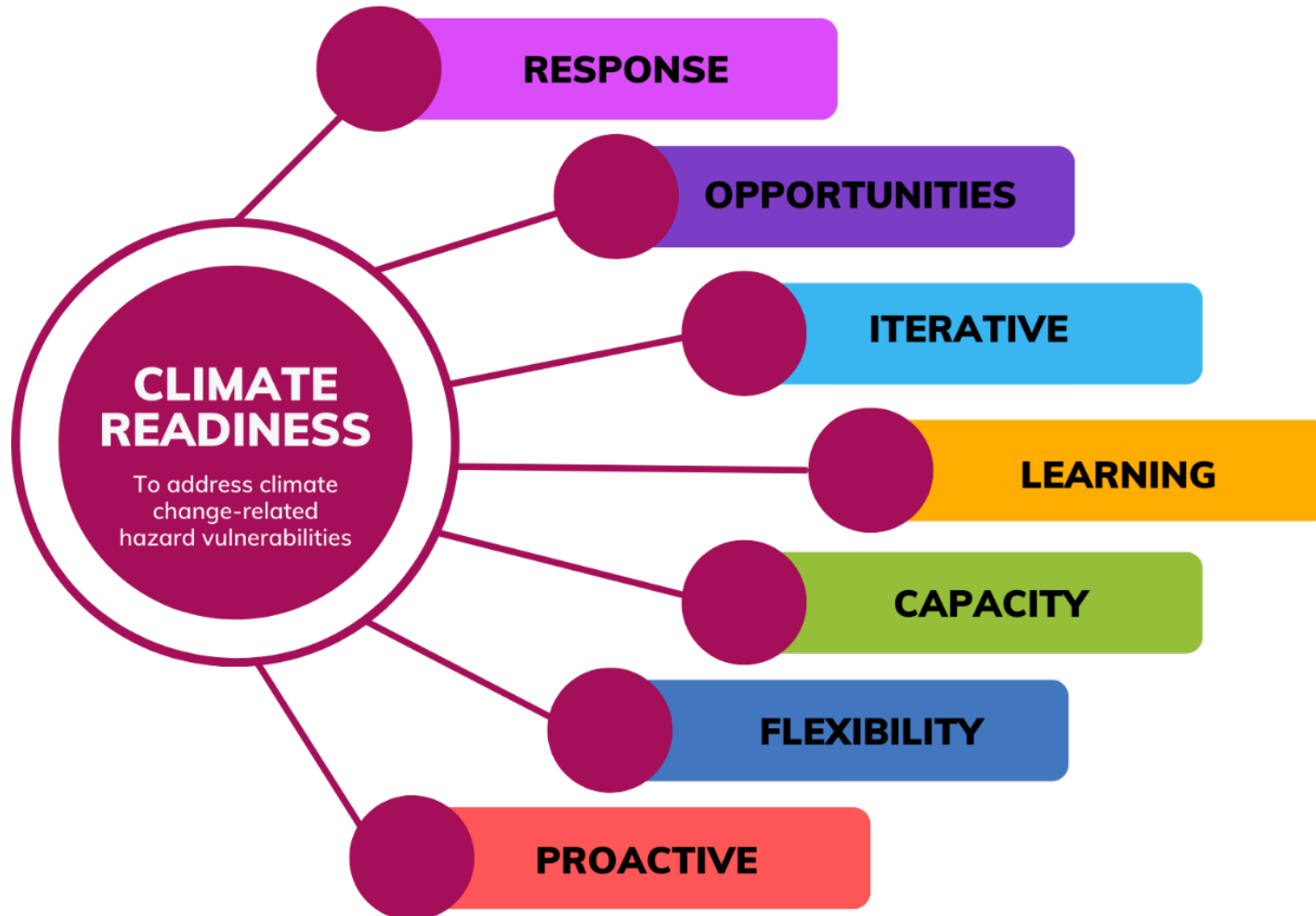
Observed and Projected Temperature Change



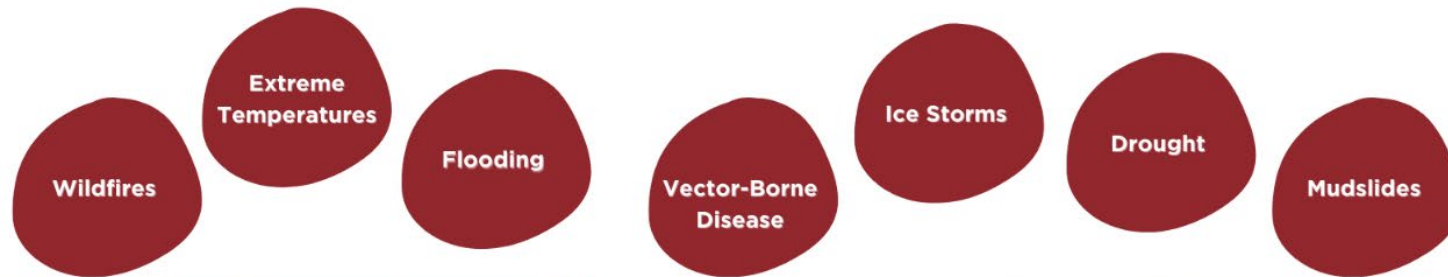
From: NOAA State Climate Summary for New Jersey, 2022.

Adaptive Capacity - The ability to address vulnerabilities through an ongoing, iterative process of learning, building capacity, and adapting.

Climate Readiness



Systems Approach



NATURAL



BUILT



ECONOMIC



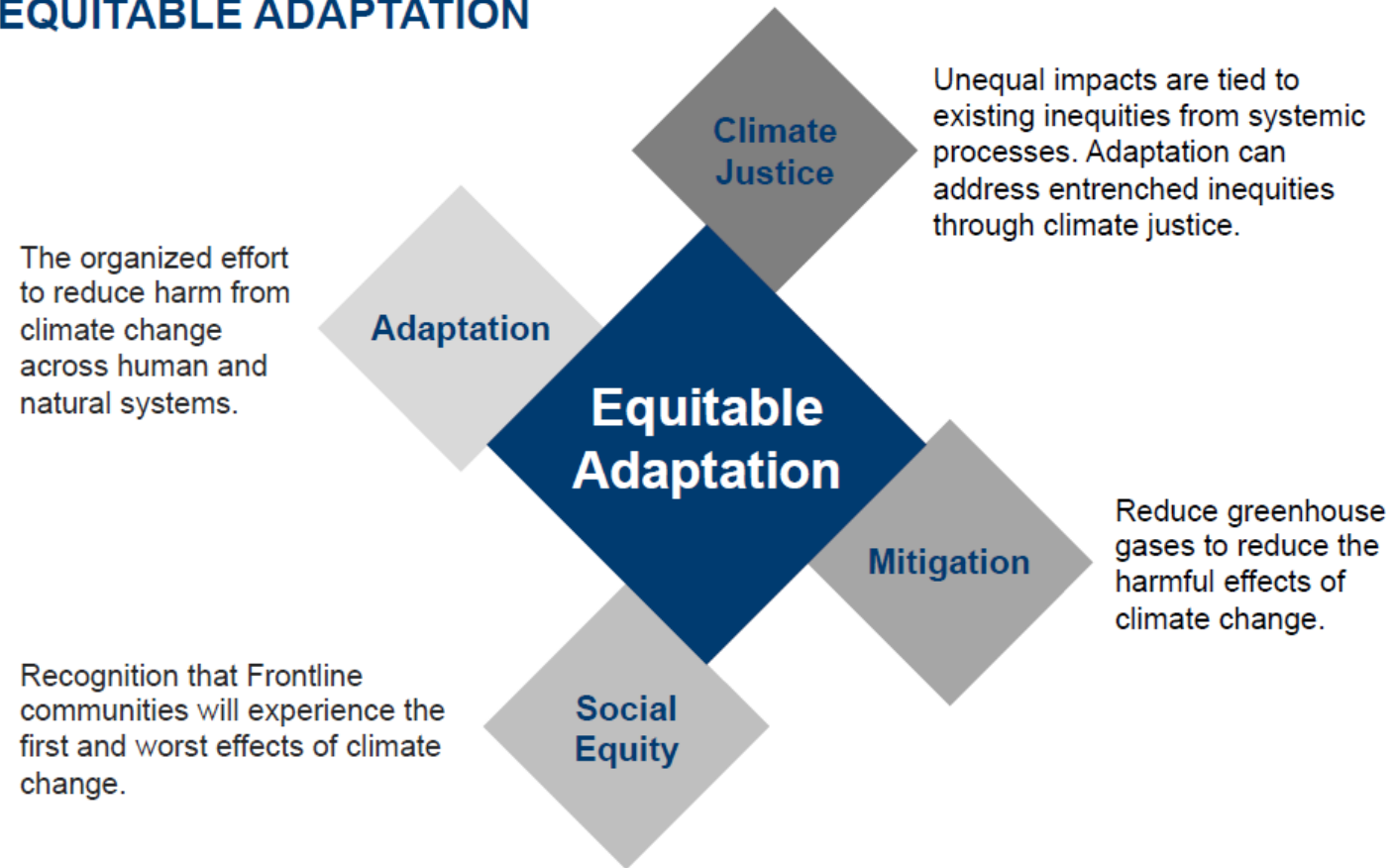
SOCIAL



GOVERNANCE

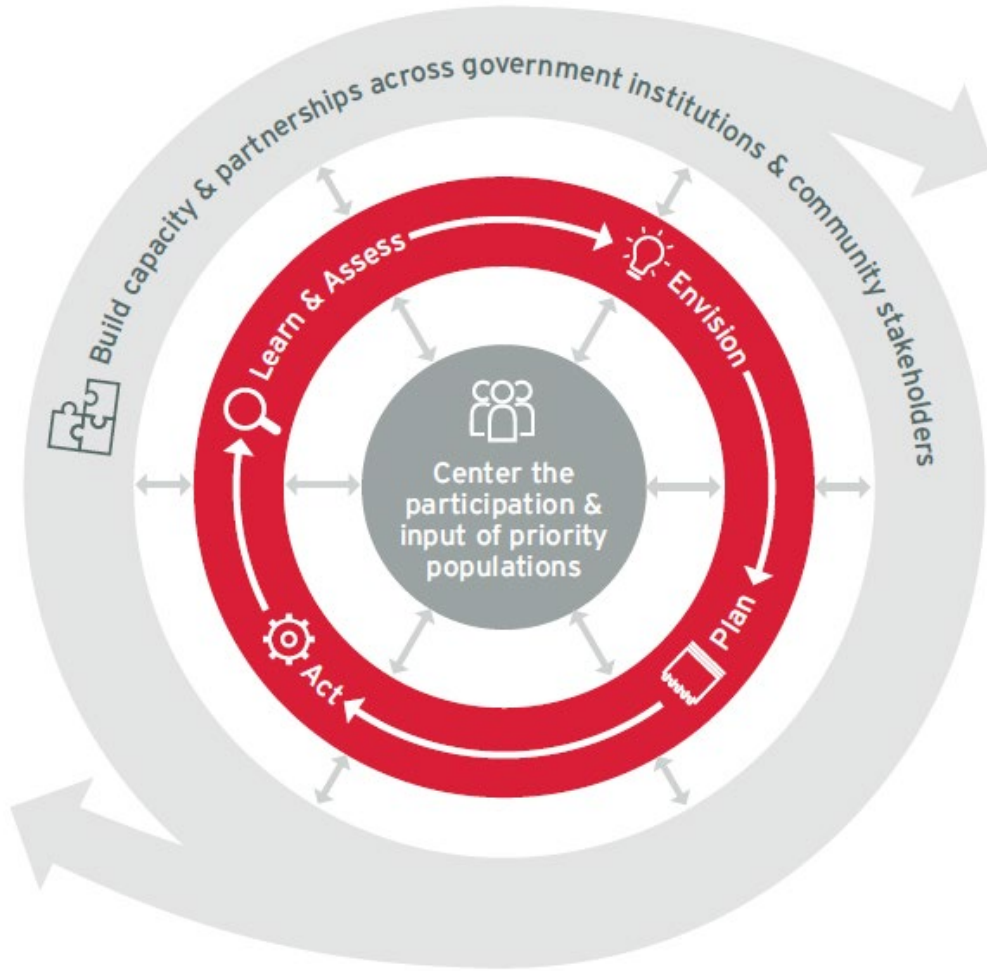
Equitable And Just Solutions Are The Only Option

EQUITABLE ADAPTATION



From: San Diego Regional Climate Collaborative at the University of San Diego, (February 2022). *An Equity-First Approach to Climate Adaptation*.

Equity Throughout and Community-Driven



- From the very beginning, and through all phases of the planning process, center participation of community members.
- Individuals and populations are already implementing strategies that we can learn from.
- Opportunity to address existing disparities.

Relationship To The MLUL

- Guide appropriate land use or development.
- Provide for the general safety and welfare of the community.
- Update all elements of the master plan, and all plans, to reflect the vulnerability assessment and align with the climate action plan.
- Institutionalize a climate readiness and sustainability framework overall and in master plan statements.

THANK YOU!

Tanya Rohrbach

Community Planning Manager

New Jersey Future

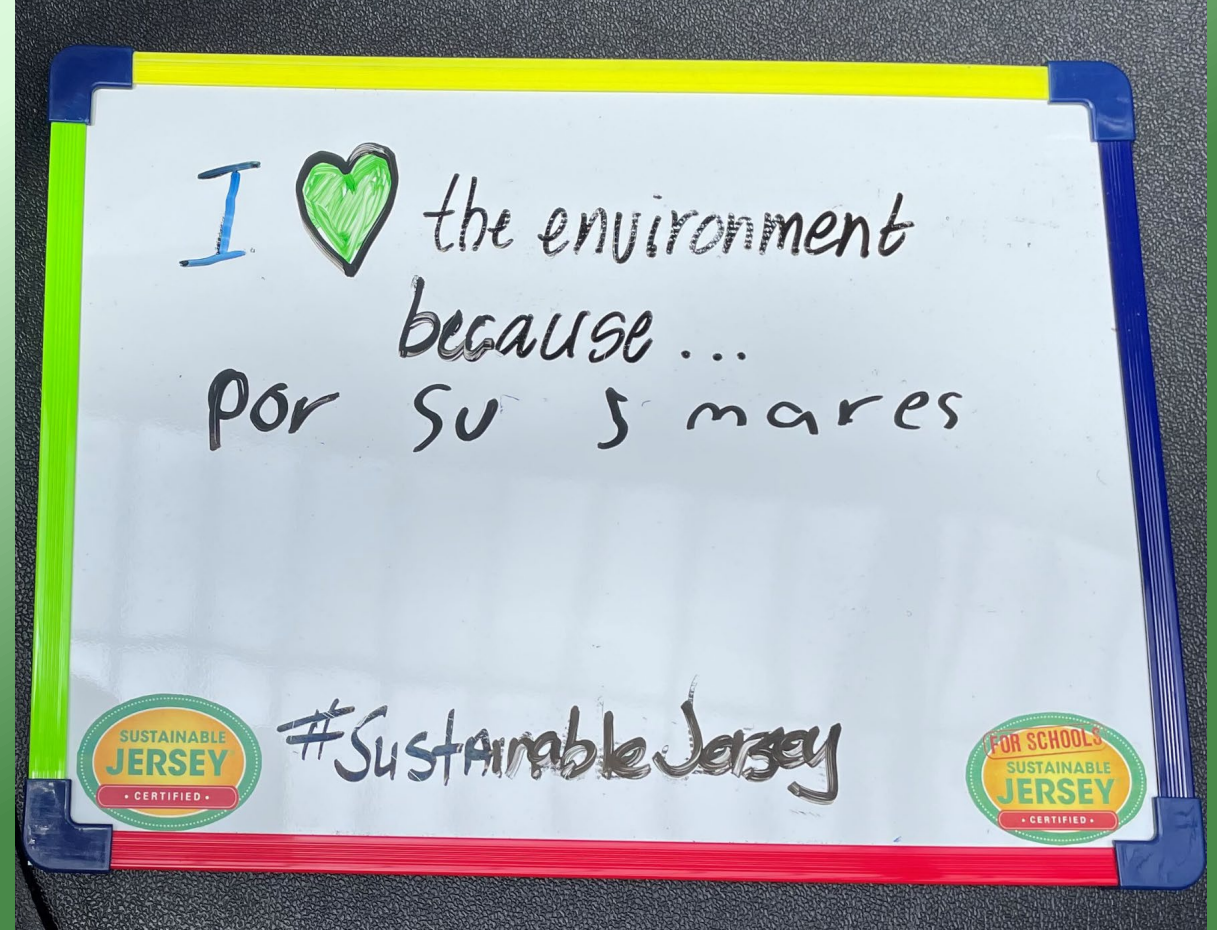
trohrbach@njfuture.org



SUSTAINABILITY SUMMIT



What municipalities can do!



7 year-old respondent
NJDEP Earth Day 50th Celebration – April 2022

SUSTAINABILITY SUMMIT



Master Plan

- Official Map
- Land Use Regulations
- Development Policies – e.g. Open Space Plan
- Capital Improvement Plan

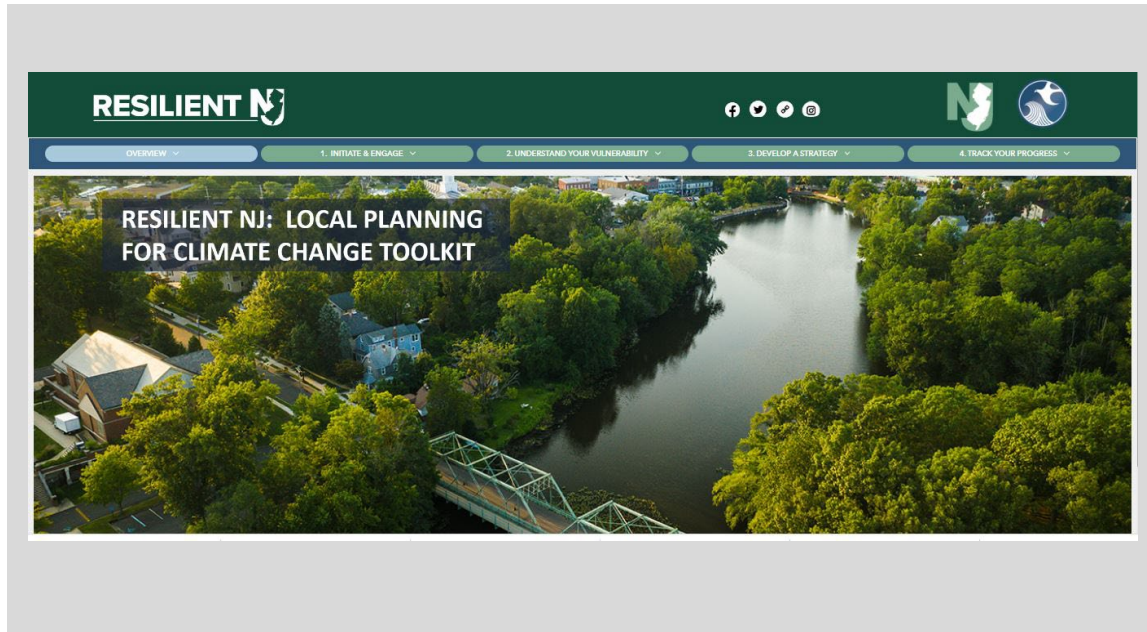
Other Plans

- Hazard Mitigation Plans
- Redevelopment Plans
- GHG Reduction – Community Energy Plans

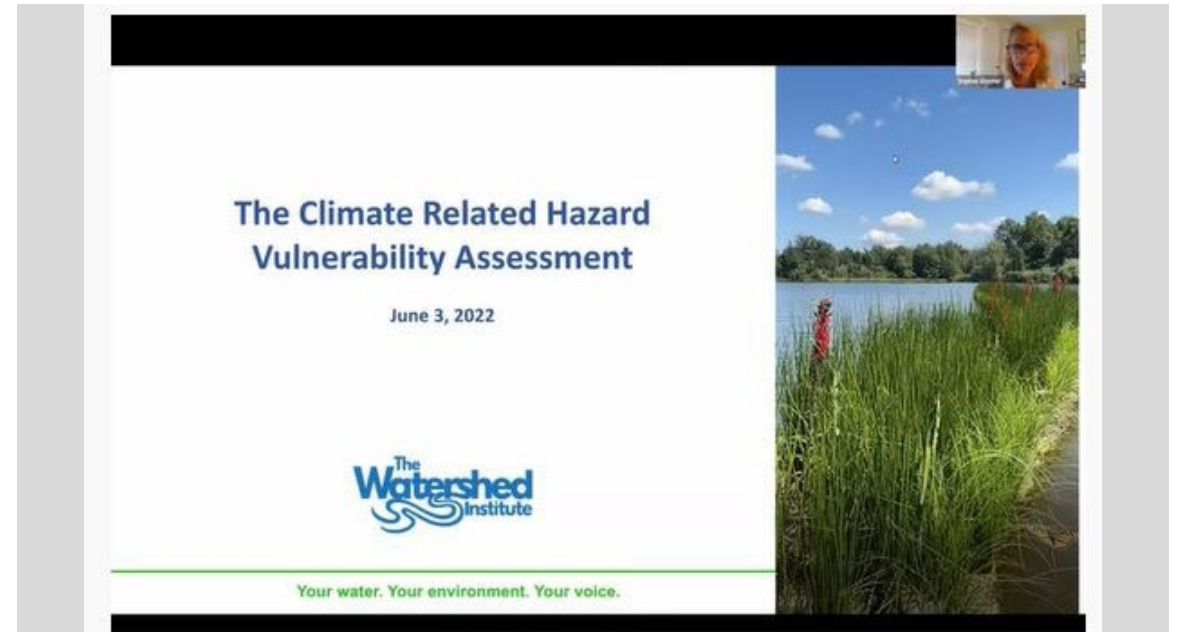


3 year-old respondent
NJDEP Earth Day 50th Celebration – April 2022

Tools and Strategies



- [Resilient NJ: Local Planning for Climate Change Toolkit](#) (NJDEP)



- [Technical Friday June 3, 2022 webinar – YouTube](#) (Watershed Institute)

Tools and Strategies

Office of Planning Advocacy
Department of State, Business Action Center

May 2022

Municipal Climate Resilience Planning Guide

INSIDE THIS ISSUE:

1. Introduction
2. Complying with the MLUL
 - a. What the law requires
 - b. Local Planning for Climate Change Toolkit
3. Conducting a Vulnerability Assessment
 - a. Steps to determine vulnerability
4. Develop a Resiliency Strategy

Intro

This planning guide was developed to assist New Jersey municipalities in complying with recent amendments to the Municipal Land Use Law (MLUL) for creating a climate change hazard vulnerability assessment, policy statement and resilience strategies to manage climate-related risks. Where indicated, the guide expands upon the MLUL requirements outlined herein, by providing best practices towards the development of a robust climate resiliency strategy. It includes both information and links to the New Jersey Department of Environmental Protection's (DEP) Local Planning for Climate



- [Municipal Climate Resilience Planning Guide](#) (OPA)

Local Options/Local Actions

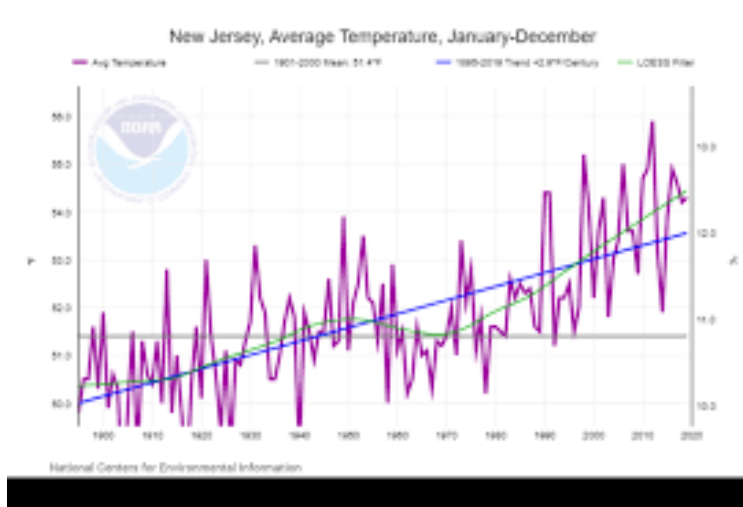
Resilience Strategies Case Studies

PREPARED FOR THE NEW JERSEY DEPARTMENT OF ENVIRONMENTAL PROTECTION



- [Local Options/Local Actions](#) (NJF)

Understanding Vulnerability



- [Heat Island Assessment Action](#) (SJ)



- [Build Out Analysis Action](#) (SJ)



- [Community Equity and Diversity Profile Action](#) (SJ)

Adaptation: Reduce Impervious Cover



- [Green Infrastructure Planning Action](#)
(SJ)



- [Green Infrastructure Implementation Action](#)
(SJ)

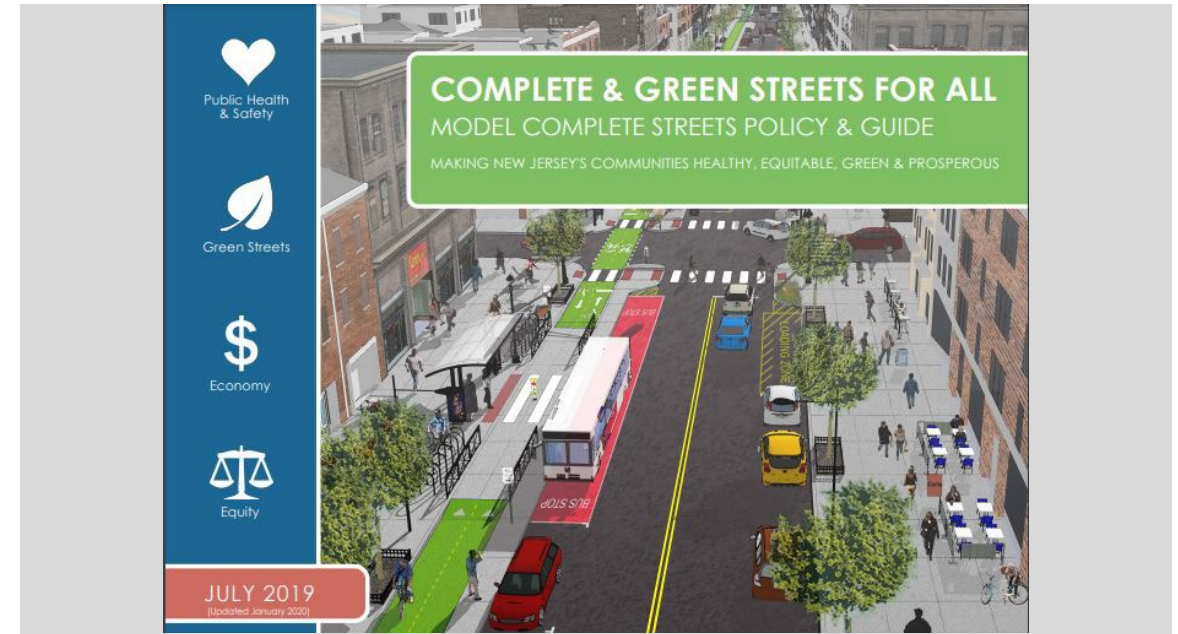
Adaptation: Reduce Impervious Cover

Want to Get Ahead of Flooding? Use NJF's New Tool, the Enhanced Model Stormwater Ordinance

February 9th, 2021 by Andrew Tabas

[Recommend 10](#) [Tweet](#) [Share](#)

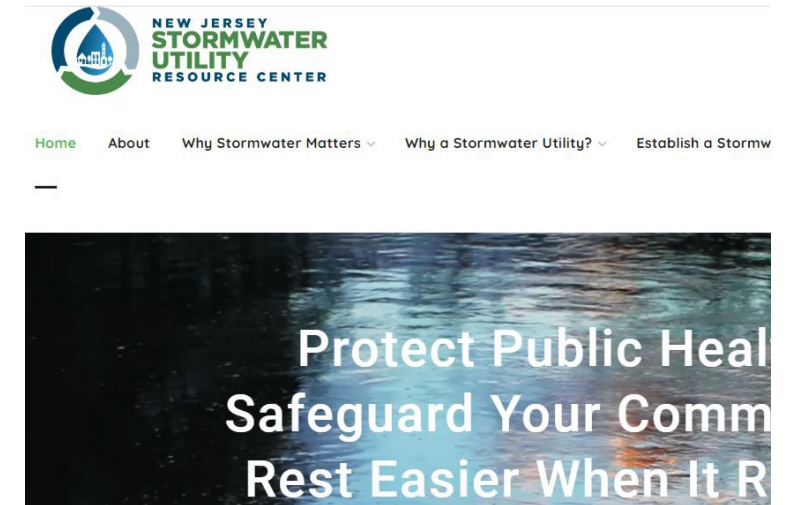
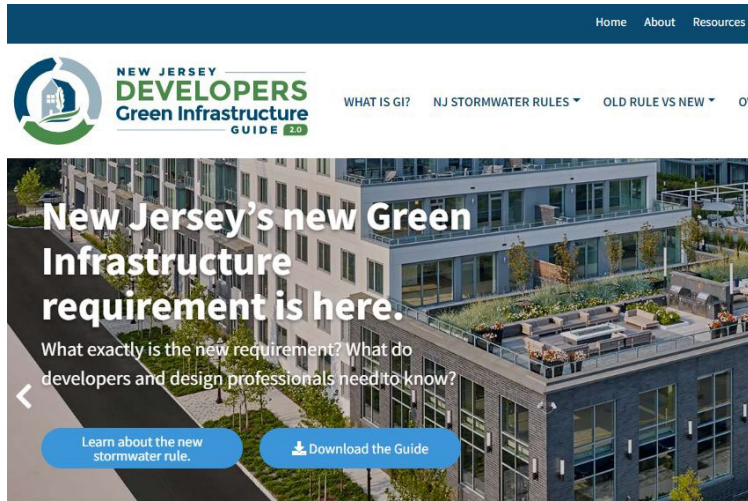
Stormy days ahead call for strong municipal stormwater ordinances. Climate change is bringing increased rainfall and flooding to New Jersey which, if ignored, will damage property, threaten public health, and pollute waterways. Municipal governments' responses to this challenge will define the quality of life in their towns for generations. Fortunately, municipalities have a strong device to promote responsible and resilient development: stormwater ordinances. The stormwater ordinance is key to implementing public and private green infrastructure, a group of practices that mimic the natural water cycle to capture rainwater where it falls. Municipal leaders should use New Jersey Future's new tool to update their town's stormwater ordinance as soon as possible to increase green infrastructure and reduce flood risk.



- [Enhanced Stormwater Management Control Ordinance Action](#) (SJ)

- [Complete and Green Streets for All Policy Action](#) (SJ)

Additional Stormwater Resources



- [New Jersey Developers Green Infrastructure Guide](#) (NJF)

- [New Jersey Green Infrastructure Municipal Toolkit](#) (NJF)

- [New Jersey Stormwater Utility Resource Center](#) (NJF)

Preparedness



- [Extreme Temperature Event Plan Action](#) (SJ)

A screenshot of the State of New Jersey Office of Emergency Management (OEM) website. The header includes the OEM logo, the state name, and contact information. A navigation bar lists various sections like Home, About Us, Plan & Prepare, etc. The main content area is titled 'Access & Functional Needs' and features a section for 'Emergency Management Resources For Individuals with Access/Functional Needs and the Organizations Which Serve Them'. This section lists resources such as the 'Register Ready' registry and a brochure available in multiple languages (English, Spanish, Arabic, Chinese).

- [Vulnerable Population Identification for Emergencies Action](#) (SJ)



NEXT STEPS

Sustainable Jersey Summit Sponsors and Partners

Corporate Sponsors

Platinum



PSEG



**New Jersey
Natural Gas**



**SOUTH JERSEY
GAS**



**ELIZABETH TOWN
GAS**

Gold



Silver



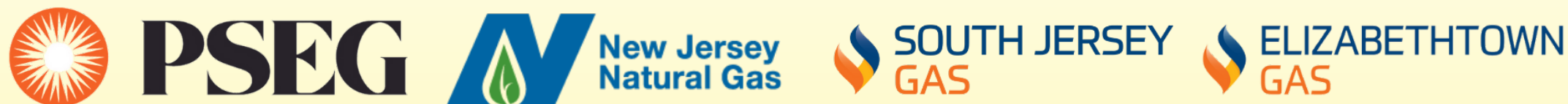
**Atlantic
Health System**



Sustainable Jersey for Schools Summit Sponsors and Partners

Corporate Sponsors

Platinum



Gold



Thank You

Session slides will be available on sustainablejersey.com by 6/30.

SUSTAINABILITY SUMMIT

