

2021 NEW JERSEY

SUSTAINABILITY SUMMIT



Get the Lead Out!

May 17, 2021



Announcements



- June 6 – municipal certification deadline
- June 21 – school certification deadline
- FREE technical assistance for one community to develop a Water Story (sustainablejersey.com/grants)
 - Tues, 5/18, 1pm – Enhance Community Water Resources Through Water Gold
- \$75,000 in grants for resiliency & environmental stewardship projects in Atlantic City Electric territory (sustainablejersey.com/grants)

PROGRAM UNDERWRITERS



The Geraldine R.
DODGE



IMAGINE A BETTER NEW JERSEY



SUMMIT SPONSORS





Speakers



Elyse Pivnick, Isles

Kelvin Boddy, Housing & Community

Development Network of NJ

Julia Taylor, Trenton Health Team

Chris Hellwig, Hamilton Township

Jael Davis, Lead-Free NJ

Melanie McDermott, Sustainable Jersey

NEW Sustainable NJ Actions Lead Poisoning Prevention

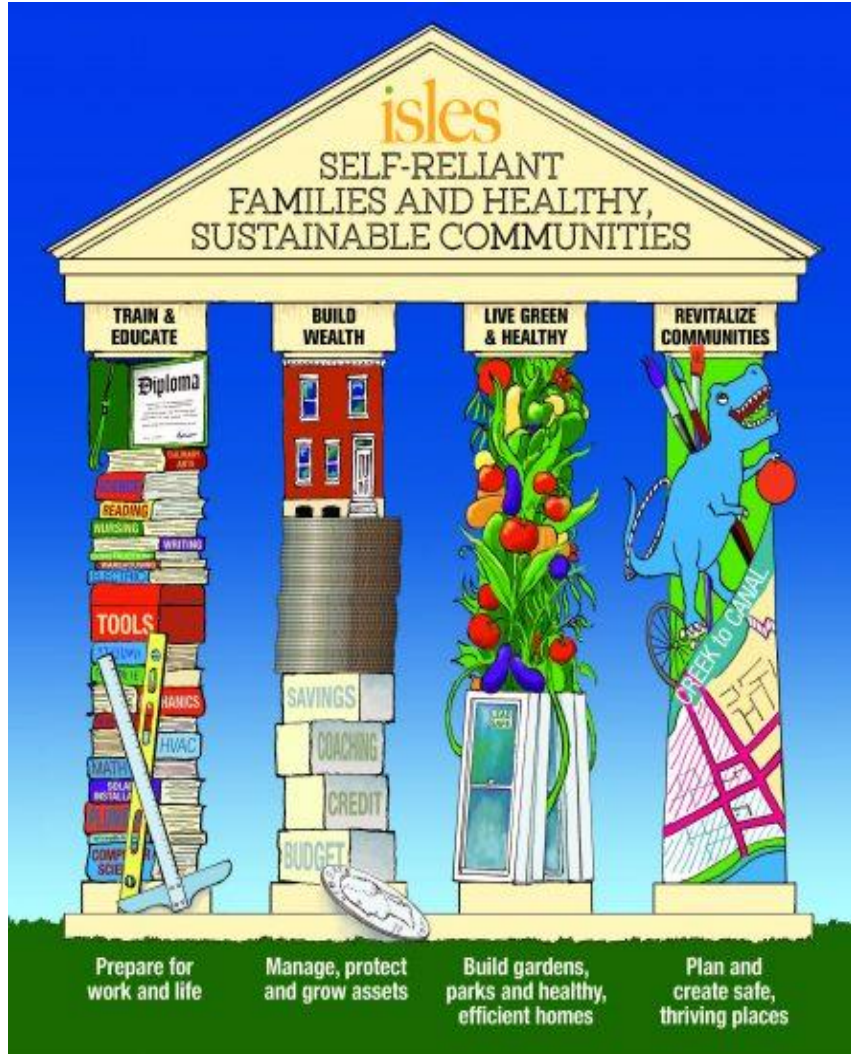
Sustainable New Jersey

May 17, 2021

Elyse Pivnick, MCP, Isles, Inc.



Isles Mission



Founded in 1981, Isles, Inc. is a community development and environmental organization based in Trenton, New Jersey.

With a mission to foster self-reliant families and healthy, sustainable communities, we design and develop effective services that support this mission and share what we learn with others who can make a difference.

NYT Quote of the Day

“If you were going to put something in a population to keep them down for generations to come, it would be lead.”

(NYT January 30, 2016)

Dr. Mona Hanna-Attisha, of Flint MI, who has studied lead poisoning and the effects of lead exposure, for which there is no cure.



isles
Self-Reliant Communities

Lead, Race and Inequality

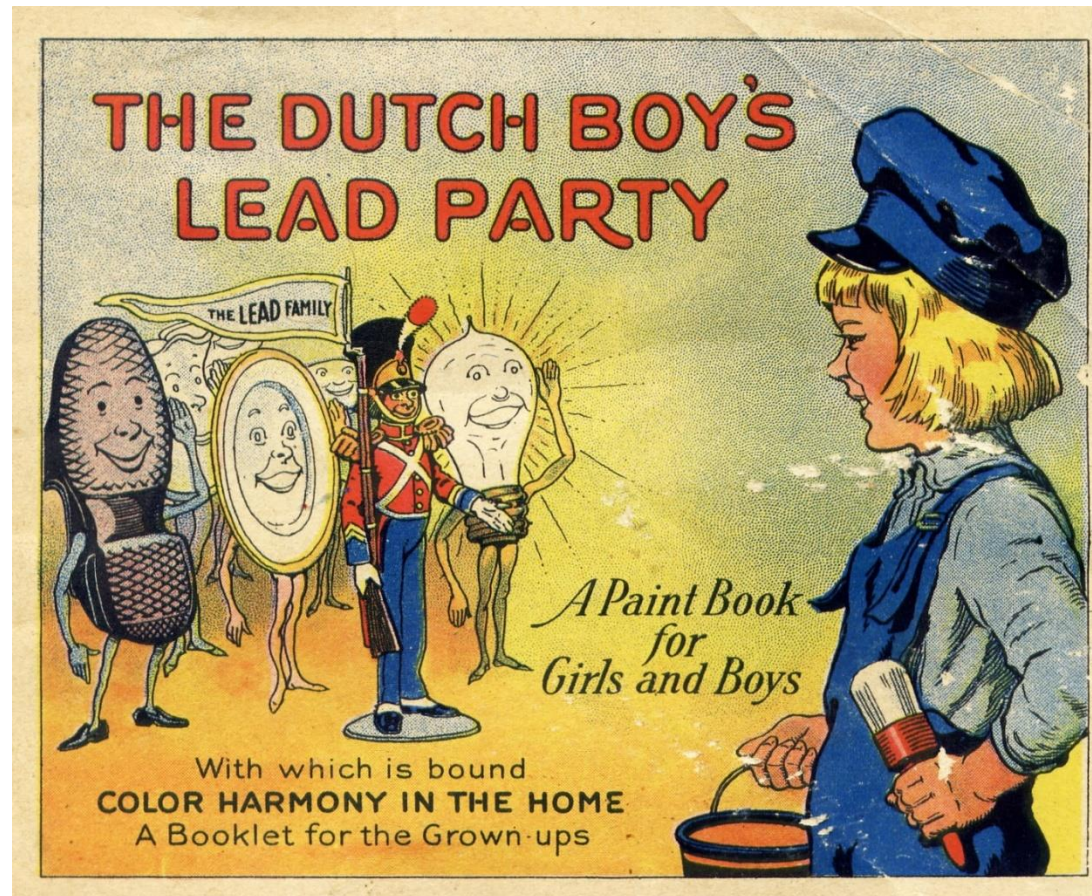
Lead toxicity ...is a pathway through which racial inequality literally gets into the body.

Dr. Robert Sampson, Harvard Researcher. 2016
https://scholar.harvard.edu/files/alixwinter/files/sampson_winter_2016.pdf



isles
Self-Reliant Communities

Legacy of Lead Paint



Robs a child of their potential in life

Dangers of Lead Exposure

- Lead poisoning remains the **#1 environmental threat** to the health of America's children, as well as a health risk for people of all ages.
- Lead is so toxic that it is unsafe at any level.



Toxic



Lead Exposure is Cumulative

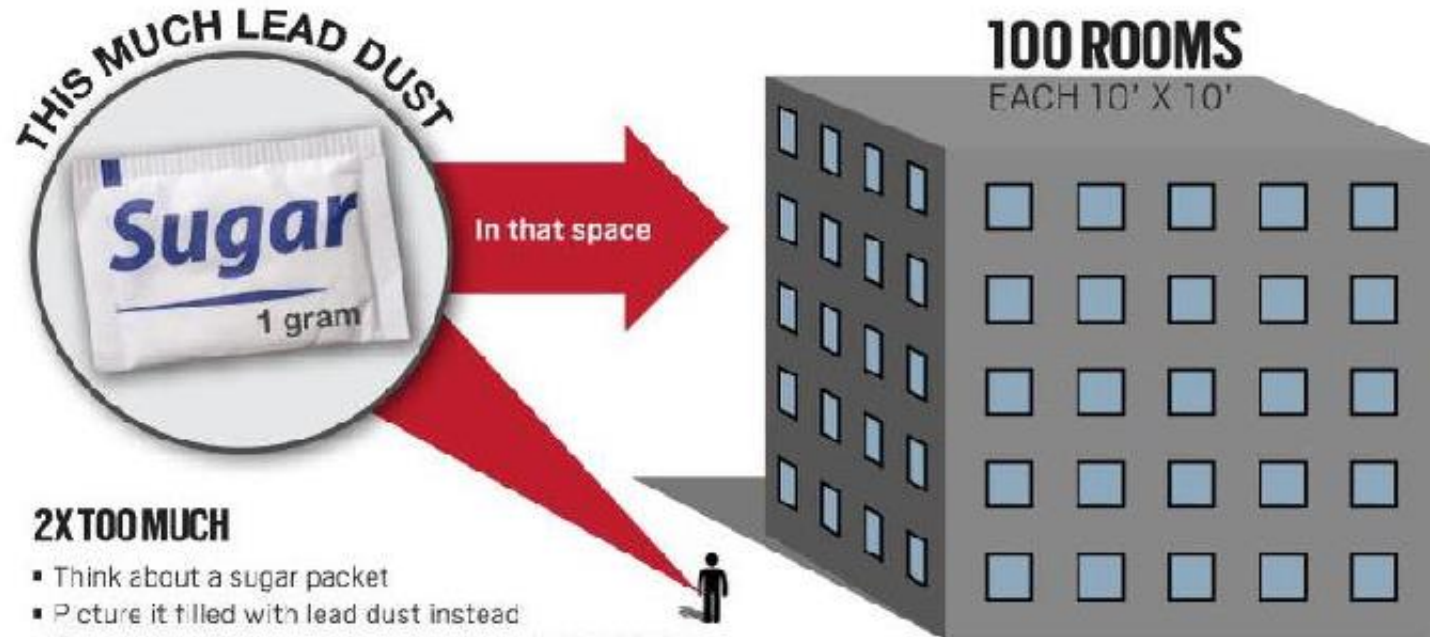
It typically comes from these main sources



How Much Lead Dust?

HOW MUCH LEAD IS DANGEROUS?

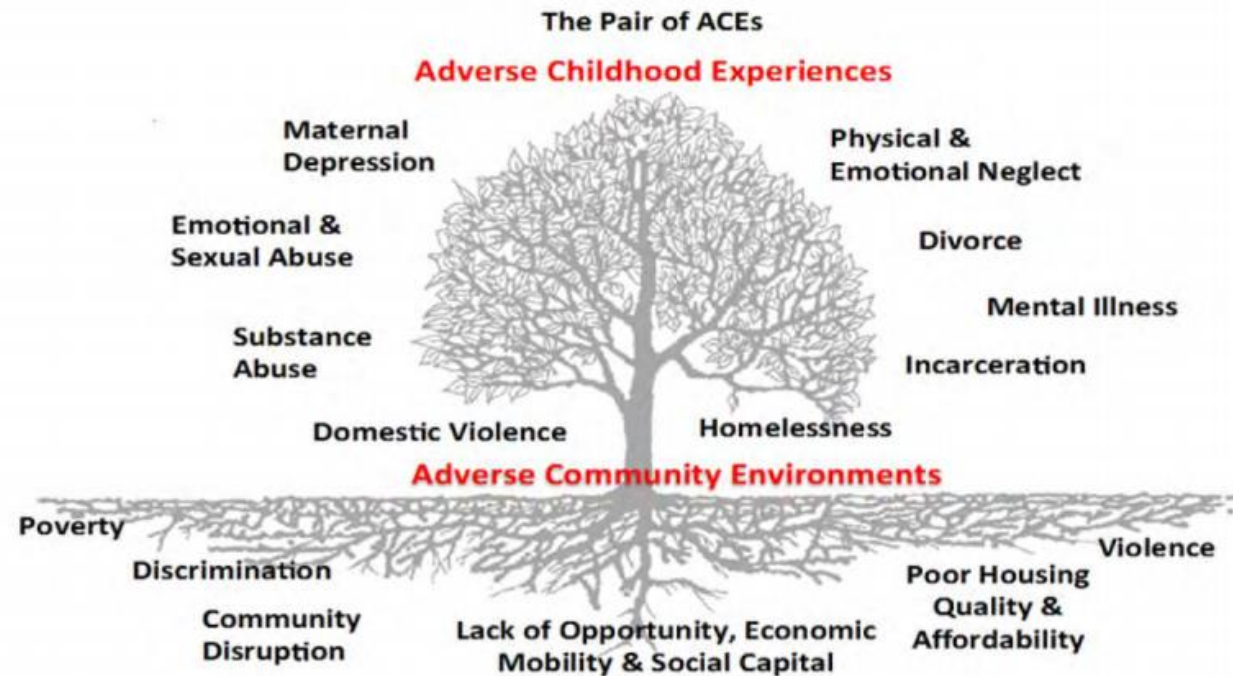
Even low levels of lead exposure can damage the nervous system, and high levels of exposure can lead to coma or death. The Centers for Disease Control and Prevention say there is no safe blood lead level in children. Paint containing lead can deteriorate or chip, leaving traces of lead dust at dangerous levels.



2X TOO MUCH

- Think about a sugar packet
- Picture it filled with lead dust instead
- Spread that little packet equally through 100 10x10 rooms
- That amount of lead dust in each room would still be two times higher than the federal hazard level.

Adverse Childhood Experiences Adverse Community Environments Social Determinants of Health



Ellis, W., Dietz, W. (2017) A New Framework for Addressing Adverse Childhood and Community Experiences: The Building Community Resilience (BCR) Model. *Academic Pediatrics*. 17 (2017) pp. S86-S93. DOI information: 10.1016/j.acap.2016.12.011

Important to Know

- About 80% of NJ housing was built before 1978—the year lead was removed from new house paint
- In 2019, about 4,000 children in New Jersey had lead level of 5 or greater for the first time
- About 225,000 young kids in New Jersey have been poisoned by lead since 2000.
- Elevated BLL: Nationally, 36% of inner-city black children vs 4% for suburban white children
- Forgotten in child development and education reform- **My Brothers Keeper**



Lead Poisoning & School Performance

- Compromised long-term memory---for example, a student can't recall multiplication tables from one day to next
- Reduced auditory processing makes it difficult, for example, to hear the difference between "s" and "f" impeding the ability to read
- Inability to control behavior
- Inability to learn no matter how hard a child tries
- Disruption in classrooms by children frustrated by their failure to learn make it difficult for *other* children to learn.
- Lower test scores for individuals and entire school districts that have a disproportionate number of children with lead poisoning
- Disproportionate number of low-income males incarcerated, unemployed and aimless



School Suspensions, Juvenile Detention and Lead Poisoning

- Children with higher exposure to lead are **more likely to misbehave** in school and do worse academically.
- Children with EBL **7X more likely to be suspended** from school
- Suspended children were also **10X more likely to end up in juvenile detention**.
- Relationship between lead and suspensions was much stronger for kids who received free lunches suggesting its **interconnection with poverty**

Currie and Aizer, 2017



Sources of Lead Exposure: Paint/Dust



Lead Connection to Housing Paint, Water, Soil, Toys, Cultural



shutterstock.com + 153406115



isles
Self-Reliant Communities

Sustainable NJ Can Help Prevent Lead Poisoning

NEW ACTION ENCOURAGES HOUSING CODE ENFORCEMENT



This checklist was developed for the National Center for Healthy Housing (NCHH) as a tool for healthy housing. A healthy home is one that is maintained, and rehabilitated in a manner to good occupant health.

A healthy home, occupants should keep it clean, well-ventilated, free from contaminants, well-maintained, and thermally controlled.

Good home maintenance can act to reduce allergens, prevent illness, and prevent accidental injuries. This checklist provides basic guidelines; items may need to be checked more often depending on local conditions and manufacturer recommendations.

Developed by Terry Brennan and Ellen Tohn, technical advisors to NCHH. Revised by NCHH staff, May 2018.

	Spring	Fall	Annual	As Needed	Pro Needed?
EXTERIOR					
Screened away from house	●				
Cracks, sagging, falling, choking, or sharp-	●	●			
Fence is intact	●	●			
Leaks, rodents, bats, roaches, or	●	●			
Gas leaks and hoses	●	●			
Check for drainage	●	●			
Downspouts	●	●			

	Spring	Fall	Annual	As Needed	Pro Needed?
INDOOR CRAWLSPACE					
Moisture, mold, or musty odor	●	●			

	Spring	Fall	Annual	As Needed	Pro Needed?
EXTERIOR ROOF, WALLS, AND WINDOWS					
Ensure that the shingles are in good condition	●				
Inspect the chimney, valley, plumbing vent, and skylight flashing for damage or leaks	●				
Inspect the chimney and clean if needed		●			
Ensure that gutters discharge water away from building	●				
Inspect the attic vents		●			
Inspect attic for signs of roof leaks	●				
Inspect for icicles and ice dams				●	
Look for peeling paint	●				
Look for signs of leaks where deck attaches to house	●				
Check below windows and doors that the flashing is intact	●				
Remove and replace any cracked or broken glass		●			
Look for signs of leaks at window and	●				

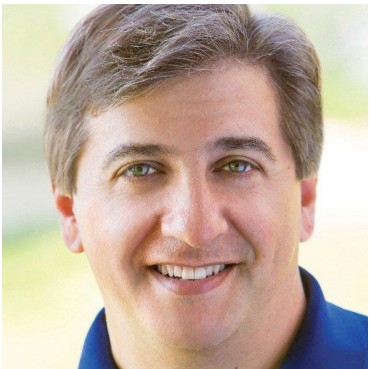
- HEALTHY HOMES TRAINING FOR HOUSING AND HEALTH INSPECTORS
- Empower them to inspect whenever they are in a home
- Leave behind a healthy homes checklist



Create a Culture of Lead Poisoning Prevention in All City Operations

Even better?

HEALTHY HOMES TRAINING FOR MAYORS, COUNCIL MEMBERS,
SCHOOL SUPERINTENDENTS, SCHOOL BOARDS, CHILD STUDY TEAMS,
COMMUNITY HEALTH WORKERS, FAITH AND CIVIC LEADERS, NJ
ELECTED OFFICIALS, and more.



isles
Self-Reliant Communities



CREATE A LEAD AND HEALTHY HOMES ADVISORY COMMITTEE

Improve coordination of lead and healthy homes efforts: Code enforcement, CHWs, data, Section 8, Medicaid, education, legislation, energy efficiency

Call to Action: EQUITY

All children should proceed through life unburdened by lead.

Support new Sustainable NJ actions.



Contact Us

Elyse Pivnick: Senior Director of Environmental Health

(609) 341-4723, epivnick@isles.org

Find Us Online



www.isles.org and www.isles.org/lppp



@islesinc



facebook.com/islesinc





Trenton Health Team

Sustainable Jersey, May 2021



Where We Started

Background

- Declining public health indicators in Trenton
- Lack of primary care access & lack of collaboration between providers
- Closure of an Acute-care Hospital (Capital Health – Mercer Campus)

Katz Report 2006

- Create an integrated health care structure
- Provide specialty care through improved funding and access
- Develop consumer engagement strategies and plan
- Establish health database & information system linking Trenton providers
- Expand primary care access
- Improve public health indicators

Four Founding Partners





NJ Regional Health Hubs

Mandatory Activities

- Operate a Regional HIE/Data Analytics Platform
- Convene community stakeholders, at least quarterly
- Serve state departments as a strategic planning partner

Additional Activities

- Plan and execute population and patient-level interventions
- Operate a community resource inventory
- Perform a health needs assessment for the region
- Other quality improvement activities
- Screening protocols on Social Determinants of Health
- Care management and coordination
- Report annually on the health goals and needs of the region

ASSEMBLY, No. 5977

STATE OF NEW JERSEY

218th LEGISLATURE

INTRODUCED NOVEMBER 18, 2019

Sponsored by:

Assemblyman LOUIS D. GREENWALD

District 6 (Burlington and Camden)

Assemblywoman JOANN DOWNEY

District 11 (Monmouth)

Assemblywoman VALERIE VAINIERI HUTTLE

District 37 (Bergen)

Senator JOSEPH F. VITALE

District 19 (Middlesex)

Senator TROY SINGLETON

District 7 (Burlington)

SYNOPSIS

Provides for establishment of Regional Health Hub Program as replacement to Accountable Care Organization Demonstration Project, and designates existing accountable care organizations and look-alike organizations as Regional Health Hubs.



A Vision for Healthy Trenton

Healthy Environment – where people want to live, work, worship, learn, & play

Growing Economy – employment opportunities, stable businesses, increased median income, equalized opportunity, and a growing middle class

Public Spaces – clean, green, accessible, and inviting, with an active developed waterfront

A Strong, Vibrant, Proud Community – leveraging history and location

Effective Education – youth development pipeline, rising graduation rates, supporting better jobs, and greater community engagement

Healthy Food – in restaurants and schools, leveraging urban agriculture

Improved Safety – safe streets and public spaces enabling community interaction; reductions in gangs and gun violence

Quality Healthcare – people-centered, integrated, and accessible



THT's Strategies

The Trenton Health Team (THT) is an innovative multi-sector partnership dedicated to the health and well-being of the greater Trenton community.

1. Convene diverse partners in Trenton to improve health, well-being, and health equity.

- Actively collaborate with partners locally and nationally
- Align clinical and social service efforts to maximize effectiveness and efficiency
- Maintain a systems approach
- Grow the capacity of THT and partners
- Involve and be accountable to residents

2. Analyze and share data to improve clinical care, public health, and well-being

3. Enact direct interventions with priority populations to fill gaps in care and services

- Include piloting and prototyping of novel interventions

4. Define and communicate our value to stakeholders to ensure long-term sustainability

- Include clinicians, Health Information Exchange (HIE) users, funders, policymakers, residents, and partner-organizations in target audiences

5. Advocate for policies that improve health and well-being and are supported by the community

THT Data Work (a few examples)

- All done with strict data sharing agreements and adherence to HIPPA, FERPA, and/or other requirements!
- Developed internal data analytics capacity to support deeper understanding of community priorities
- Community Health Needs & Assets Assessment (CHNAA with hospitals, GMPHP, and local stakeholders; CNA with HJAHC)
- Food systems research/food pantry network analysis with Mercer Street Friends and Trenton Food Stakeholders
- Partnering with the Trenton Board of Education to identify health/healthy homes-related causes of chronic absenteeism and link families with interventions
- Using HIE data to identify the prevalence of certain health conditions among the population covered in the HIE - lead poisoning, asthma, diabetes

Better Data Sharing

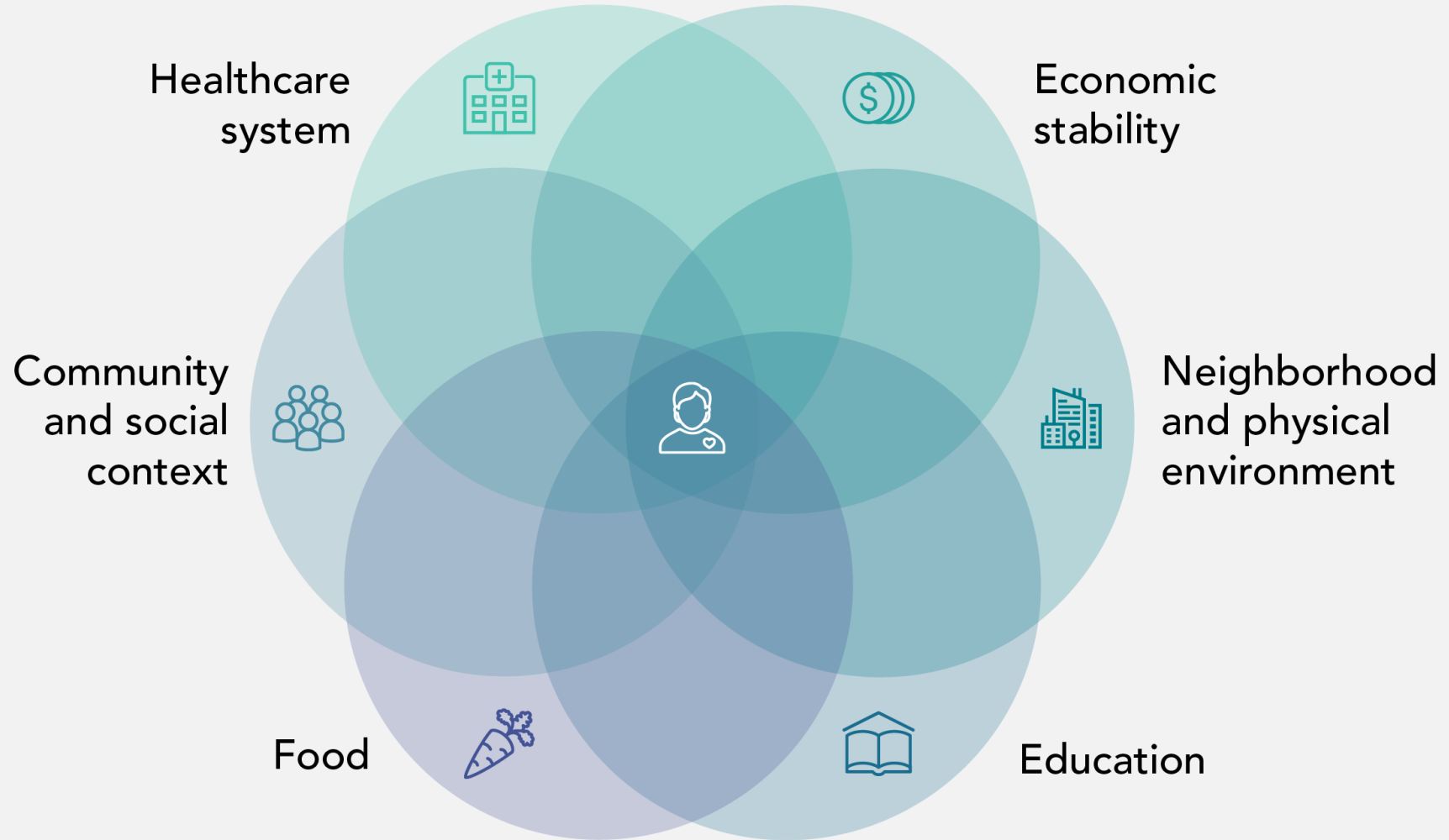
- New Sustainable Jersey action in development to encourage better cross-departmental municipal data sharing and more open data for public use
- Look beyond municipalities to support better data sharing - state agencies, etc.
- Focus on linking information by property to understand which properties and which landlords enable or hinder healthy, safe housing...operationalize an investigative mindset!
- LeadTrax - example of how changes regarding information collected and protected at the state level could support municipal data sharing and stronger healthy homes protections
- Identify and solve data-sharing barriers to enable proactive interventions
- No one-size fits all answers, but the more we try the more we'll learn!
- This is an equity issue!

GET THE LEAD OUT!

Municipal Health Perspective

Christopher Hellwig, MPH MCHES
Health Officer
Township of Hamilton Division of Health

SOCIAL DETERMINANTS OF HEALTH



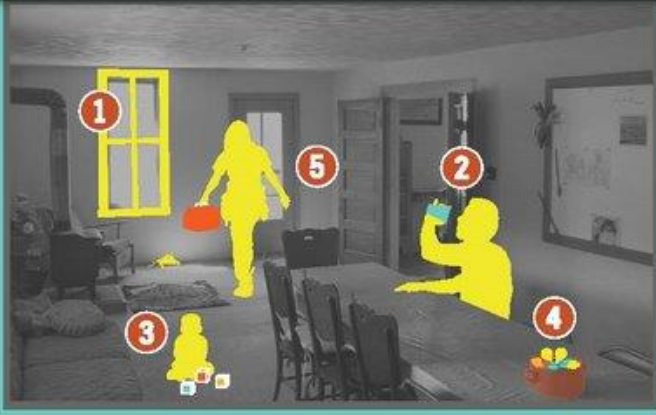
ENVIRONMENTAL JUSTICE

- EPA: Environmental justice is the fair treatment and meaningful involvement of all people regardless of race, color, national origin, or income, with respect to the development, implementation, and enforcement of environmental laws, regulations, and policies.
- Lead doesn't discriminate but its effects are uneven.
 - Those with the most lead burden tend to be lower income, people of color, and recent immigrants.
- Municipalities/LHDs are on the front lines to make a difference



SOURCES OF LEAD

Lead can be found throughout a child's environment.



Lead-based paint is the main source of EBLs in NJ, but there are plenty of other sources.



1 Homes built before 1978 (when lead-based paints were banned) probably contain lead-based paint.



When the paint peels and cracks, it makes lead dust. Children can be poisoned when they swallow or breathe in lead dust.



3 Lead can be found in some products such as toys and toy jewelry.



4 Lead is sometimes in candies imported from other countries or traditional home remedies.



2 Certain water pipes may contain lead.



5 Certain jobs and hobbies involve working with lead-based products, like stain glass work, and may cause parents to bring lead into the home.

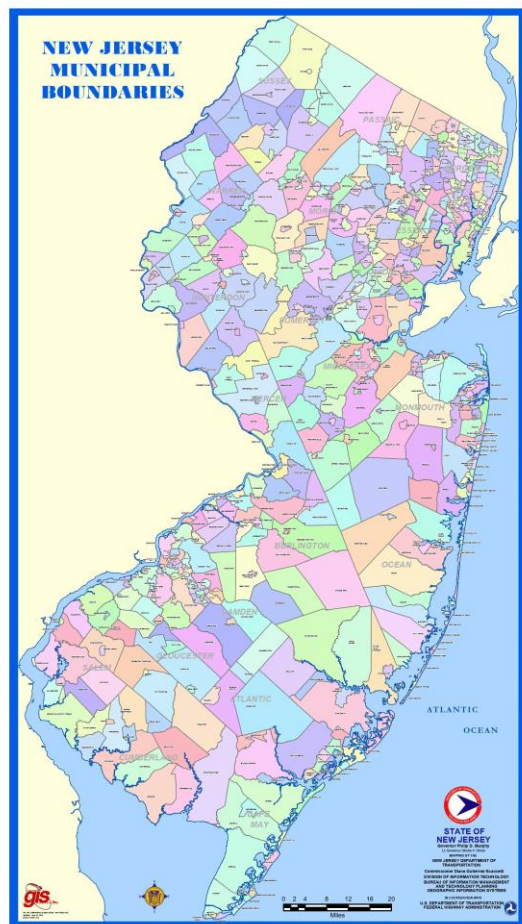
EFFECTS OF LEAD

No safe level of lead exposure in children has been identified.

- Exposure to lead can seriously harm a child's health and cause :
 - Damage to the brain and nervous system
 - Slowed growth and development
 - Learning and behavior problems
 - Hearing and speech problems
- Which can cause:
 - Lower IQ
 - Decreased ability to pay attention
 - Underperformance in school

The good news is childhood lead poisoning is 100% preventable

PUBLIC HEALTH IN NEW JERSEY



- 104 Local Health Depts. (LHDs) serving 565 municipalities
- Every municipality in NJ has a Local Board of Health
 - Usually the town council unless otherwise specified
- Local Boards of Health/Local Health Departments are responsible for:
 - Emergency response and disaster resiliency
 - Communicable disease investigation and outbreak response
 - Environmental health inspections and investigations
 - Chronic disease prevention and health promotion
- Directory of LHDs
 - <https://nj.gov/health/lh/documents/LocalHealthDirectory.pdf>

ROLE OF THE LHD

- Authority given under
 - NJAC 8:51 – Childhood Elevated Blood Lead Levels
 - NJAC 8:51A – Screening of Children for Elevated Blood Lead Levels
- 3 main areas of LHD involvement:
 - Blood lead level screening of children under the age of 6
 - Nursing case management of children with EBLLs
 - Environmental interventions

SCREENING

- Per NJAC 8:51A...
 - All children at ages 12 and 24 months should be screened for lead
 - Additionally, all children aged 6 months to 72 months should have a risk assessment performed to determine lead exposure risk:
 - Whether the child resides in, or frequently visits, a house built before 1960 in which the paint is peeling, chipping, or otherwise deteriorated, or where renovation work has recently been performed that involved the removal or disturbance of paint
 - Whether the child resides with an adult who is engaged in an occupation or hobby where lead or material containing lead is used
- Healthcare facilities serving children under 6 or LHDs may perform screening

NURSING CASE MANAGEMENT

- The LHD initiates nursing case management when a child has a confirmed BLL of $5\mu\text{g/dL}$
 - The Public Health Nurse...
 - Conducts a home visit
 - Provides education and counseling
 - Coordinates care with the child's PCP
 - Screens siblings or other household children
 - If required, completes Lead Hazard Assessment Questionnaire with Lead Inspector
 - Coordinates relocation, if needed
 - Assists with referrals
 - Continues to case manage the child until discharge

ENVIRONMENTAL INTERVENTIONS

- The LHD initiates an environmental intervention when a child has a confirmed BLL of $10\mu\text{g}/\text{dL}$ or greater; or when the child has two confirmed BLLs of $5\text{-}9\mu\text{g}/\text{dL}$ between 1-4 months apart.
- Environmental interventions are performed by a Lead Inspector/Risk Assessor
 - Onsite visual inspection of the residence
 - Use of a lead paint analyzer (XRF) or consumer products analyzer to identify potential sources of lead or lead dust
 - Education
 - Coordinates lead remediation/abatement with property owner and contractors
- Also helps identify other potentially hazardous conditions

GET VACCINATED!



- We can't do it without *you!*
- All 3 approved COVID-19 vaccines are:
 - ✓ Safe
 - ✓ Effective
 - ✓ Available
- All residents aged 12-years and older are encourage to get vaccinated
- Visit www.Covid19.nj.gov/vaccine to find a shot near you

QUESTIONS?

Christopher Hellwig

Township of Hamilton Division of Health

chellwig@hamiltonnj.com

Office: 609-890-3824

Lead in the Home: The Facts



- ▶ Homes built before 1978 in New Jersey could contain lead-based paint, posing significant health risks for young children, pregnant women, and seniors.
- ▶ Landlords must disclose the presence of lead paint in home built before 1978 and renters must receive a federally-approved pamphlet on lead poison prevention.
- ▶ Houses built in 1977 or earlier can still contain copious amounts of lead paint, leading to childhood lead poisoning.
- ▶ There are 4,800 new cases of childhood lead poisoning in New Jersey annually.
- ▶ There is no safe level of lead exposure, which has the potential to cause slower growth in children, lower IQs, and behavioral problems.

Making an Immediate Impact



- ▶ **Requiring Lead Paint Inspections at tenant turnover and property sale, A1372/S1147 (Ruiz, Holley, Wimberly, Benson, Mukherji)**
 - ▶ Requires lead paint inspections prior to home purchases and tenant turnover;
 - ▶ Establishes educational programs about lead paint poisoning and the Network will devote considerable efforts to getting this bill passed into law.
 - ▶ *Passed Senate Economic Growth Committee; Awaiting hearing in Senate Budget and Appropriations Committee*

Making an Immediate Impact



- ▶ **Requiring municipalities to conduct lead paint inspections in one- and two-family rental homes**, A1233/S1282 (Schaer, Turner, Holley, Wimberly, Mukherji)
 - ▶ Requires towns to inspect every single-family and two-family rental dwelling located within the municipality for lead-based paint hazards at least once every five years,
 - ▶ Municipalities would charge a fee for the inspection;
 - ▶ Town would also impose an additional \$20 fee per unit for the Lead Hazard Control Assistance Fund.
 - ▶ *Awaiting hearings in the Assembly Housing Committee and the Senate Community and Urban Affairs Committee*

- ▶ Call your representative and tell them that children should not serve as lead detectors and to urge the passing of S1147 and S1282.
- ▶ These bills will be a priority at our Legislative Day event on June 2nd!

LEAD-FREE



Lead-Free NJ



Courtesy of Newark Water Coalition





Our Purpose

To ensure that New Jersey's children are free from lead poisoning and that our environment is lead-safe by advocating for changes to state and local policy. The collaborative seeks to eliminate racial and economic inequities by focusing on legacy lead hazards in low-income communities and/or communities of color while also creating the conditions for children to be free from lead poisoning statewide.

Our Goals

- *Holistic Lead Remediation*
- *Policy Change*
- *Empowered Communities*

Community Hubs

Grassroots organizations that are collaborative members with a specific community focus. They coordinate efforts, strategize on solutions, educate the community, advocate for lead policy change locally, etc. within their specific municipalities or regions.

- *Trenton (East Trenton Collaborative)*
- *Newark (Homes for All Newark)*
- *Paterson (Habitat for Humanity)*

Sign up today!

<https://forms.gle/4Ug9cz4GC7Ar3R1c7>



Facebook: @LeadFreeNewJersey

Twitter & Instagram: @LeadFree_NJ



Jael Davis

Program Manager

jdavis@njfuture.org

Anthony Diaz

Community Outreach Coordinator

adiaz@njfuture.org

Backbone Staff Contact Information



Sustainable Jersey & Lead



*What can municipalities (& schools) do to
'get the lead' out of our communities?*

*Melanie McDermott
Senior Researcher
Sustainable Jersey*



Existing Lead Reduction Actions



1. Remove Lead from Drinking Water
2. Private Well Testing
3. Tobacco-Free Community
4. Lead Outreach and Education Programs



Forthcoming Lead actions



1. Comprehensive Lead Strategy
2. Lead and Housing Hazard Data-Sharing Action
3. Healthy Homes Training and Inspections Action
4. Lead Screening Campaign
 - to increase % of children who have had mandated **blood lead** level screening tests



Lead in Context



- This new suite of actions to reduce the toxic burden of lead is part of Sustainable Jersey's commitment to advancing **social equity**.
- Sustainable communities are healthy communities: forthcoming **Gold Star Standard in Health**.
- **Healthy homes** are integral to healthy communities.



More Sustainability Summit events to come!



- List of Summit events with registration - bit.ly/NJVirtualSustSummit
- *Want a Healthier Community? Go for the Gold!*
Summit session, Thursday, 1:00-2:15 pm
- Recordings of Summit events – *will be posted by 5/28.* www.sustainablejersey.com > **Resources** > **Presentations** > **Sustainability Summit**



Questions?



If you have remaining questions, or would like more information, please contact us at:

mcdermom@tcnj.edu

info@sustainablejersey.com