

The Link Between Health Equity & Climate Change

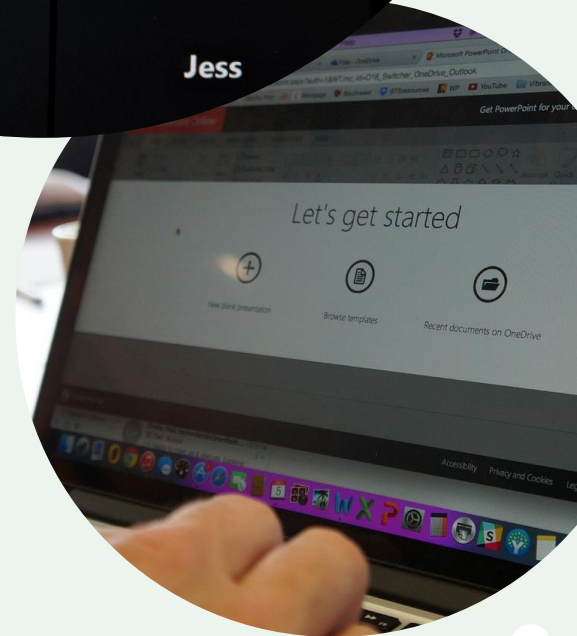
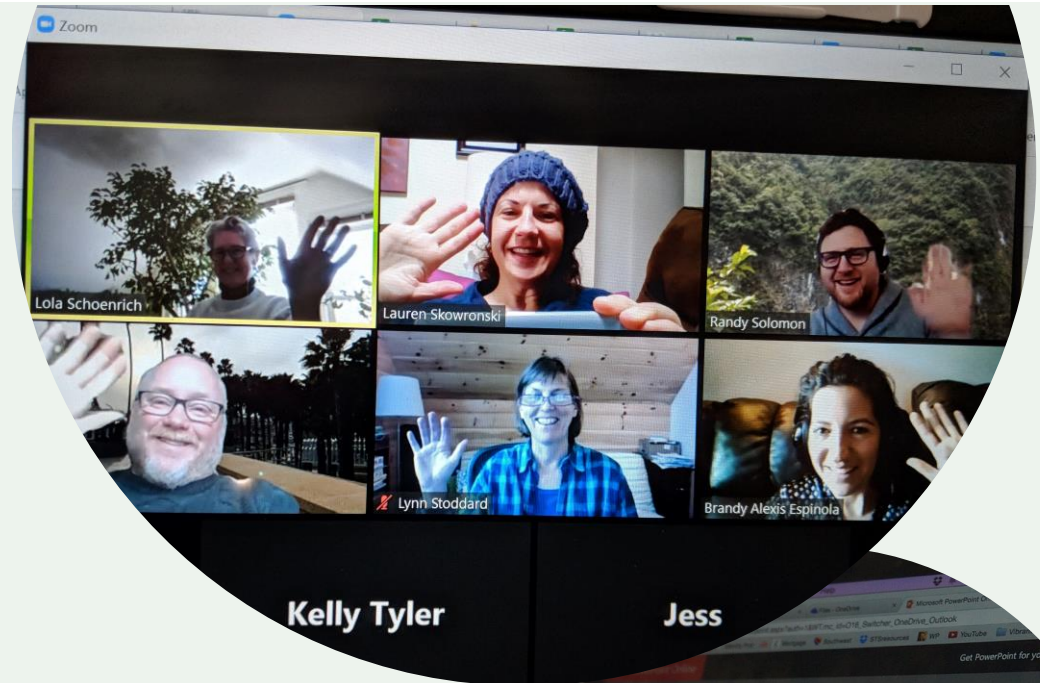
Jeanne Herb, Executive Director
Environmental Analysis & Communications Group,
Rutgers Bloustein School of Planning & Public
Policy

Announcements

More info on each initiative can be found in the rotating images at sustainablejersey.com



- **Certification Timeline Changes**
 - **Municipal** – Samantha, info@sustainablejersey.com
 - **Schools** – Veronique, lambertv@tcnj.edu
- **Energy Toolkits & Energy Efficiency Outreach Trainings** -
Nancy, quirkn@tcnj.edu
- **Free Municipal Tech Coaching** – Lauren, skowronl@tcnj.edu
- **Census Response** – Samantha, info@sustainablejersey.com



The Link Between Health Equity & Climate Change

Jeanne Herb, Executive Director
Environmental Analysis & Communications Group,
Rutgers Bloustein School of Planning & Public
Policy



The Link Between Climate Change and Health Inequities
Sustainable Jersey Virtual Sustainability Summit

May 5, 2020

Jeanne Herb

Bloustein School of Planning & Public Policy
New Jersey Climate Change Resource Center
New Jersey Climate Change Alliance

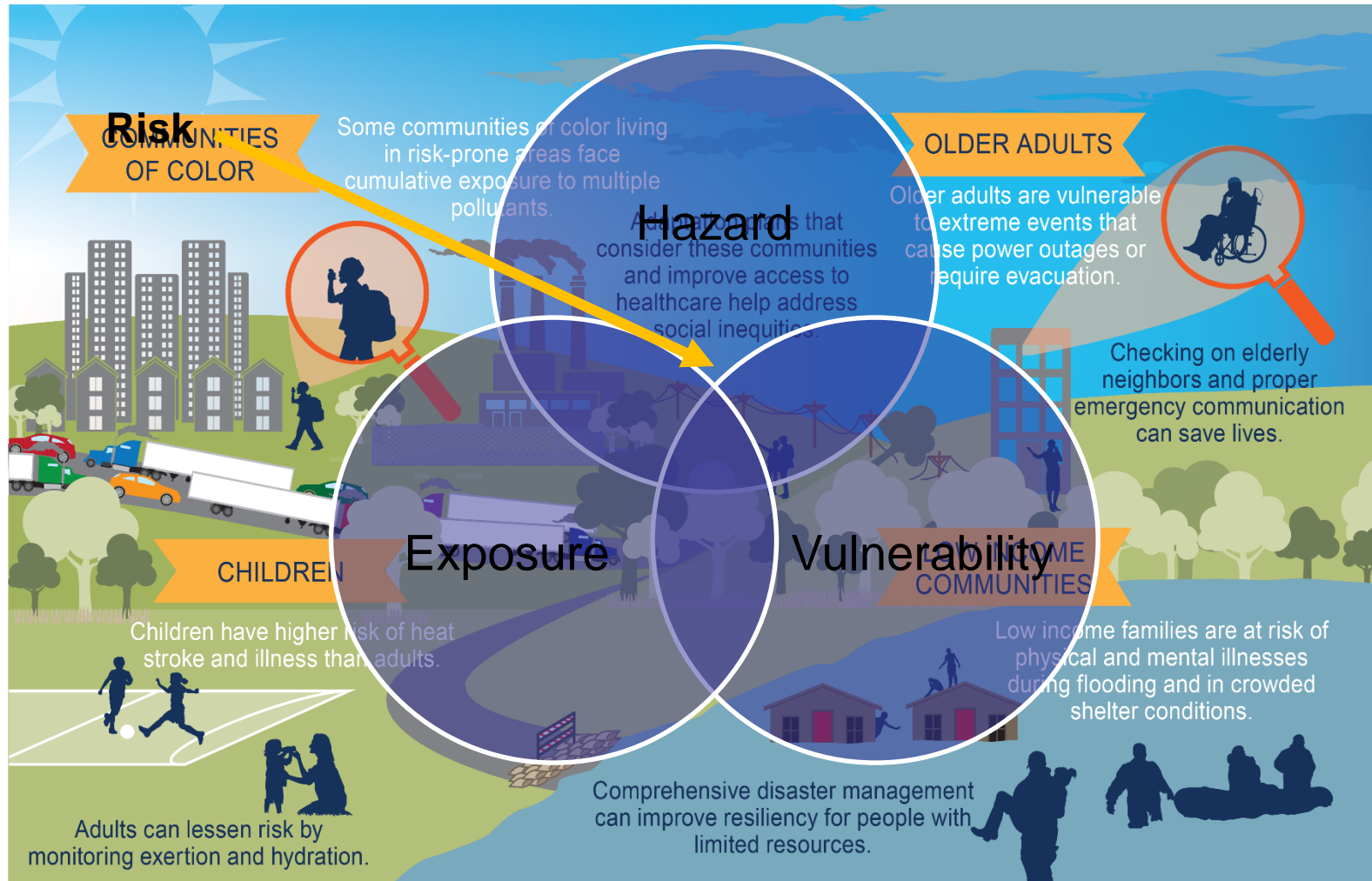
Climate Change Affects the Health of All Americans



FOURTH NATIONAL CLIMATE ASSESSMENT

CHAPTER 14: HUMAN HEALTH

Exposure and Resilience Varies Across Populations and Communities

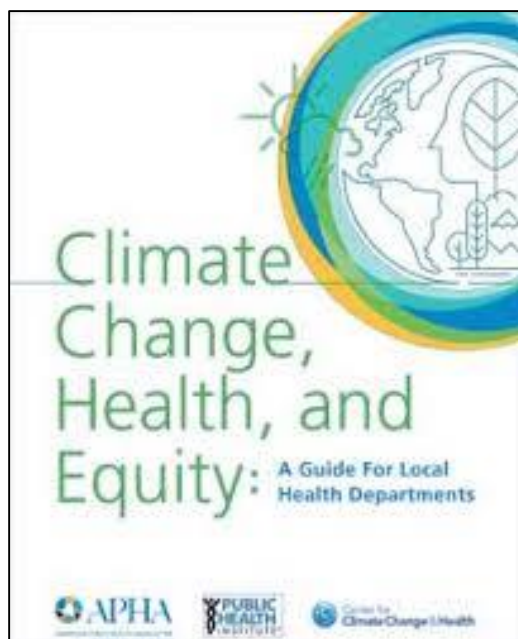


“Health equity means that everyone has a fair and just opportunity to be as healthy as possible. This requires removing obstacles to health such as poverty, discrimination, and their consequences, including powerlessness and lack of access to good jobs with fair pay, quality education and housing, safe environments, and health care.”

Braveman et.al. 2017



“Climate change & health inequities are inextricably linked”



- *Climate Change disproportionately affects the health of low-income communities & communities of color.*
- *Climate change & health inequities share the same root causes.*
- *Addressing climate change and health inequities requires transformational change in our systems and communities.*

Climate Change: An Exacerbator of Root Causes of Health Inequities

NATION & WORLD Posted September 13 | Updated September 14

Deaths of 8 nursing home patients raise concerns about Florida's elderly

The home had no air conditioning because of Hurricane Irma, but it is across the street from an air-conditioned hospital.

BY TIM REYNOLDS AND TERRY SPENCER ASSOCIATED PRESS

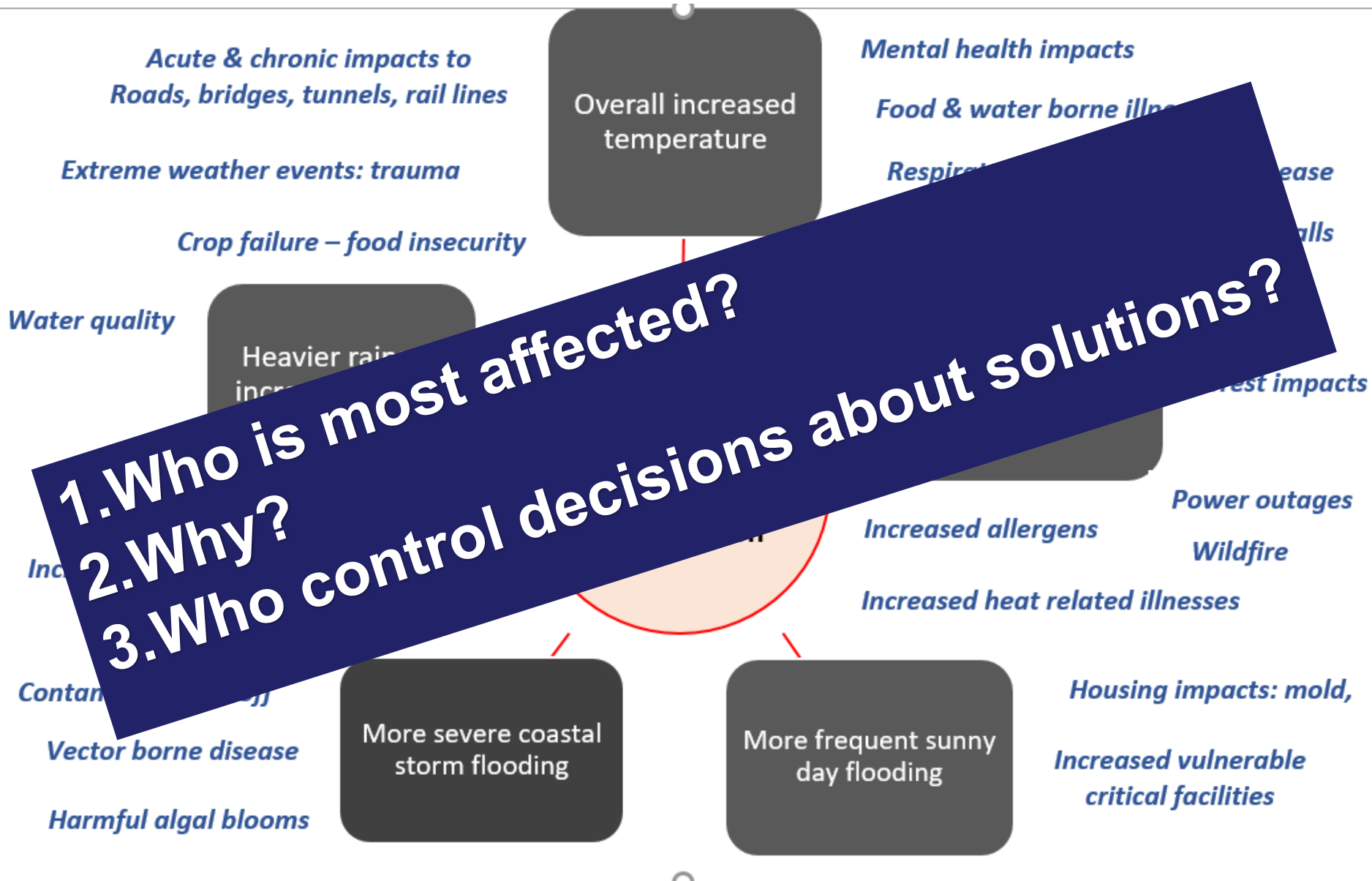
Follow: [f](#) [t](#) [v](#) [p](#) [i](#) [g](#)



Key Message 2: Most Vulnerable at Most Risk

Climate change will, absent other changes, amplify some of the existing health threats the nation now faces. Certain people and communities are especially vulnerable, including children, the elderly, the sick, the poor, and some communities of color.





What we heard in New Jersey:

1. Underlying societal inequities are the biggest hurdle to achieving resilience. *Fix the underlying problems!*
2. Populations most affected by climate change lack a “seat at the table.” *Build a bigger table!*
3. Socially vulnerable populations & service providers perceive that resources are inequitably distributed. *Earmark dollars and pre-authorize to trusted sources!*
4. Government has a role to play but not the only role. *Create community led partnerships!*
5. Inclusion is not enough. *Assess equity impact!*

Intersecting climate change and health equity goals generates synergistic outcomes that create a society that is not only *healthier*, more *resilient* and environmentally *sustainable*, but a society that is *just*, in which opportunity is available to all, and risks are equitably shared.

https://njadapt.rutgers.edu/images/June_24_summary_3.pdf

The good news!



Photo credit: Newsweek

Strategies to intersect climate change efforts & health equity goals

1. Redefine **Resilience**;
2. Recognize that the process of **whole community resilience planning** is an opportunity to increase overall community resilience by addressing underlying social, economic and physical challenges (sdoh) faced by socially vulnerable populations;
3. Integrate health equity into the climate planning process:
 - “**Add seats to the table**” for socially vulnerable populations that are traditionally underrepresented in civic processes. Focus on equity, diversity, inclusion.
 - Recognize that expanding participatory processes is not enough: **Assess impact** of resilience actions on socially vulnerable populations.

1. Redefine Resilience

Coastal resilience means building the **ability of a community to "bounce back"** after hazardous events such as hurricanes, coastal storms, and flooding – rather than simply reacting to impacts.

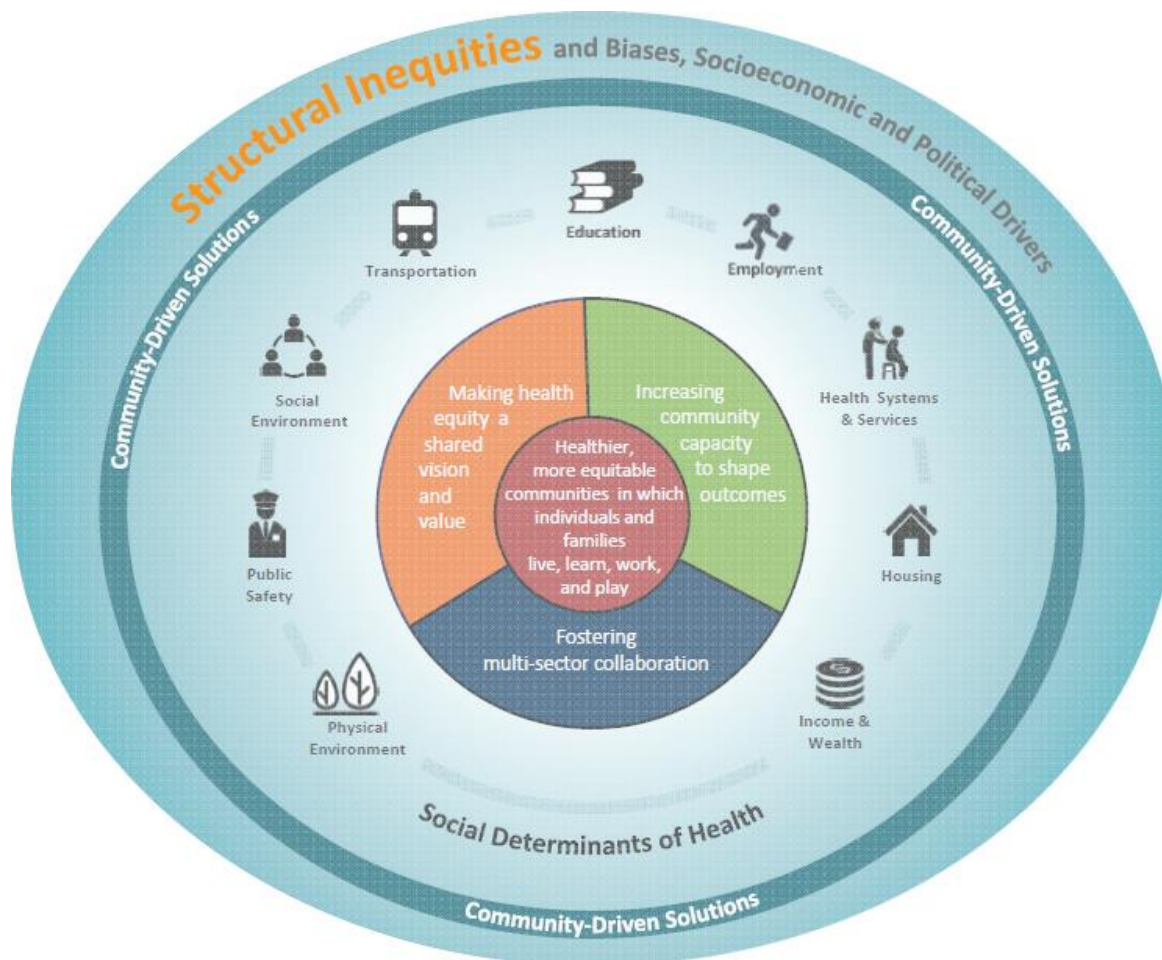
NOAA

If you want people to bounce back from a storm, make sure they have the resources they need to live a happy and healthy life now and then they can take care of themselves if there's a storm event!



“Bouncing **forward**” to improved conditions where all people live in communities that are healthier, greener, cleaner, more equitable and more prosperous....and more resilient.

2. Whole community climate resilience planning – A tremendous opportunity to address social, economic and physical challenges faced by socially vulnerable populations



3. Integrate health equity into climate planning





“Climate change is a public health emergency: The health and well-being—and possibly the very survival—of the communities we serve is in danger, as witnessed by the increased occurrence of disastrous wildfires and extreme weather events.”

Georges C. Benjamin, MD Executive Director American Public Health Association



jherb@ejb.rutgers.edu
848-932-2725

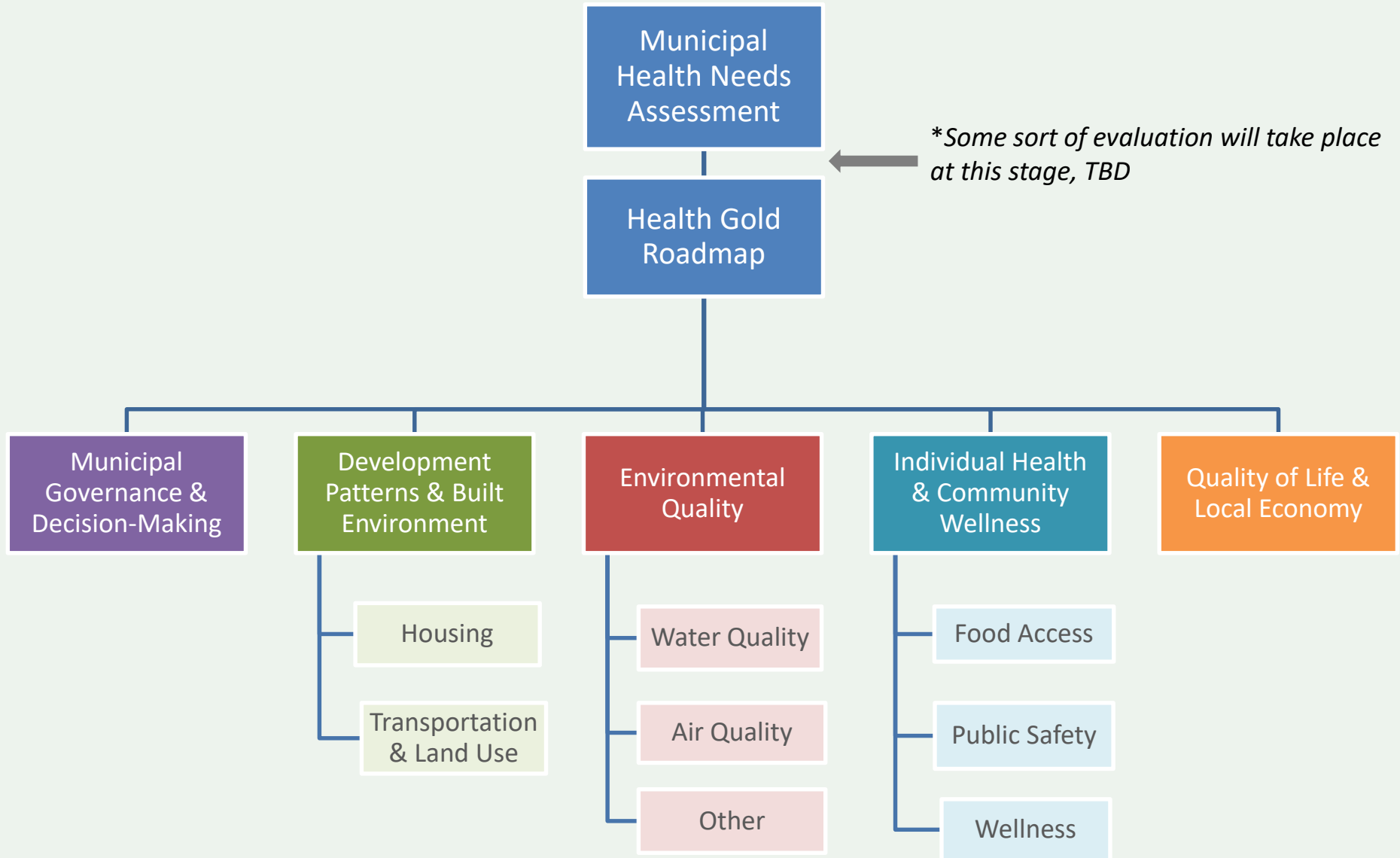


Gold Star Standards

- ✓ Build a Culture of Health
- ✓ Address “upstream” determinants
- ✓ Address health inequity



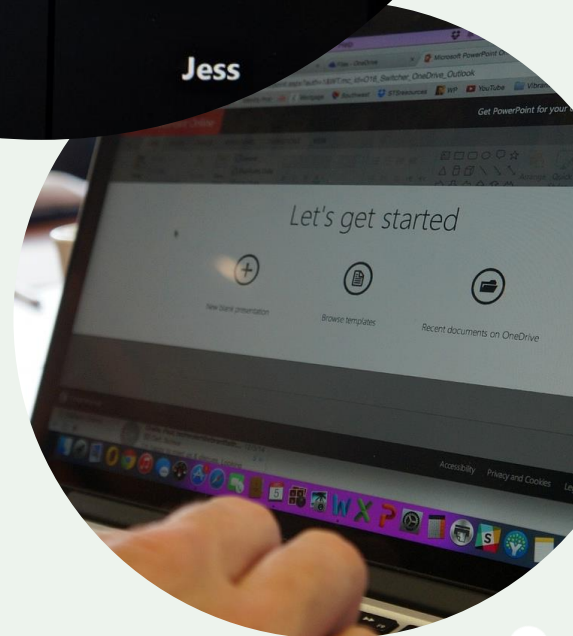
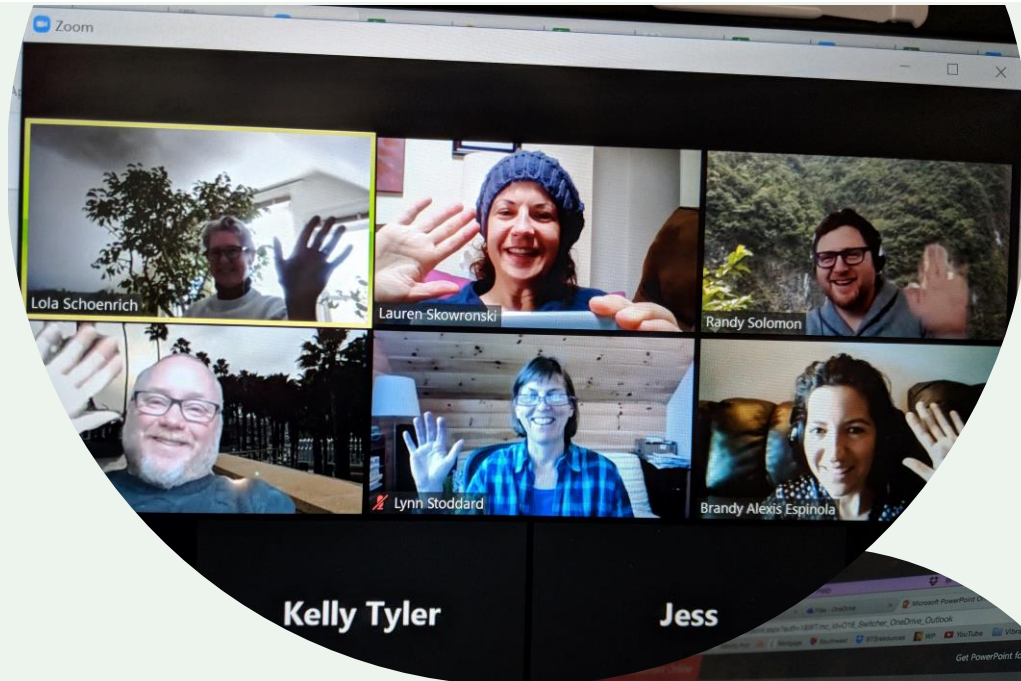
Framework of the Gold Star Standard in Health





Q&A

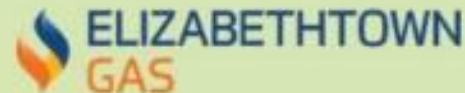
The Link Between Health Equity & Climate Change



PROGRAM UNDERWRITERS



SUMMIT SPONSORS



More Virtual Sustainability Summit events to come!

List of VSS events & to register -
bit.ly/NJVirtualSustSummit

Recordings of VSS events –
**www.sustainablejersey.com >
Resources > Presentations >
Sustainability Summit**



@SJ_Program | #NJSustainabilitySummit

Register

Protecting Drinking
Friday, April 24, 11:00

Register

Asbury Park Dinner
Monday, April 27, 4:00

Register