



Sustainable Jersey New Actions & Initiatives

November 20, 2024

A Framework for Action

- Coordinates priorities, resources, and policy among public and private state and local actors
- Develops **tools, resources, and guidance** to make progress
- Provides access to **grants and technical assistance**
- **Recognizes** accomplishments





SUSTAINABLE JERSEY

COLLECTIVE IMPACT



91%

OF NJ POPULATION
LIVES IN A
**REGISTERED
OR CERTIFIED
COMMUNITY**



83%

OF MUNICIPALITIES
PARTICIPATING

67%

of NJ public school districts
registered with Sustainable
Jersey for Schools



208

**MUNICIPALITIES
CERTIFIED**

68

SILVER
CERTIFIED

140

BRONZE
CERTIFIED



375

**SCHOOLS
CERTIFIED**

68

SILVER
CERTIFIED

307

BRONZE
CERTIFIED

27,927



**SUSTAINABILITY ACTIONS
COMPLETED** by both municipalities and schools

**\$8.1
MILLION**



IN GRANTS FOR MUNICIPALITIES,
SCHOOLS & SCHOOL DISTRICTS



SUSTAINABLE JERSEY GRANTS PROGRAM



**\$20k*, \$10k, & \$2k
Municipal and School
Sustainability Grants
Currently Available!**



PSEG

FOUNDATION

***Municipalities only**



ELIGIBILITY

Technical Assistance

- Energy
 - Community Energy Planning
 - Energy Efficiency Upgrades to Facilities
 - Residential and Business Outreach
 - Renewable Energy
 - Electric Vehicles
- Water
- Complete Streets
- Equity
- Healthy Communities

173

Municipalities

120

Schools

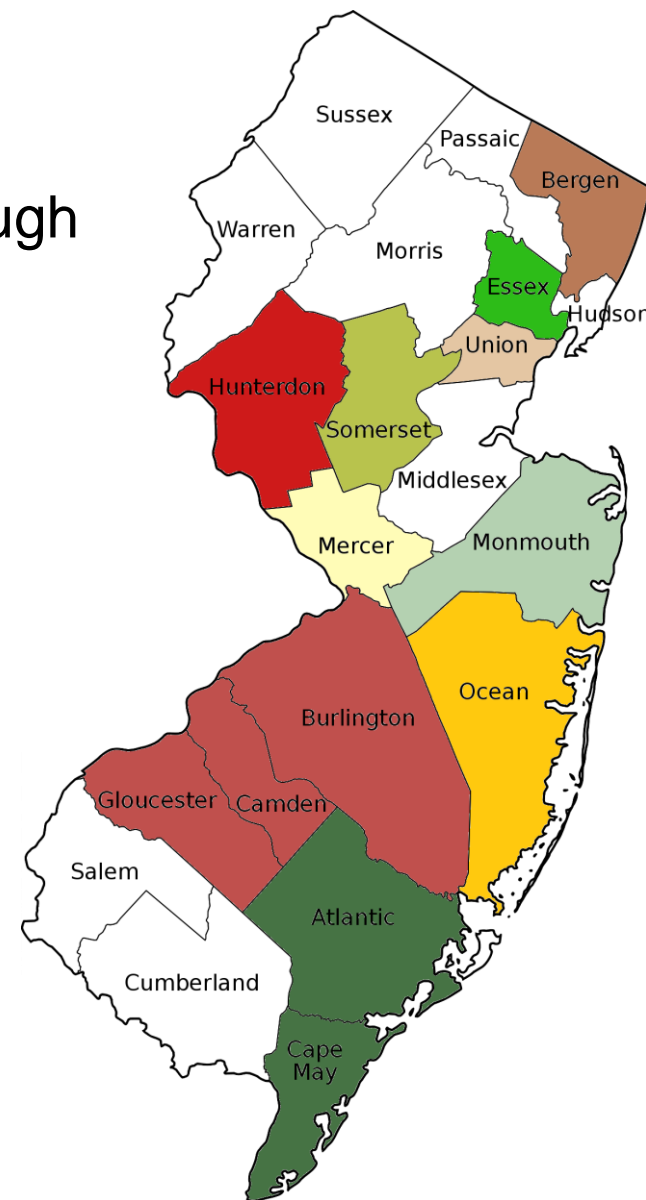
Regional Hubs

Ten hubs around the state to help green teams build capacity through training, best practices resources and networking. Learn more

sustainablejersey.com/get-involved/

Benefits

- Peer mentoring
- Project collaboration
- Online communication platform
- Network of Leaders
- Quarterly Events
- Help Peers Get Certified
- Technical assistance & administrative support from SJ





STUDENT CLIMATE CHALLENGE

- Students in grades 6 – 12
- Teams of 2 – 12 students
- Complete a School or Community Project Addressing the Human Causes or Environmental Impacts of Climate Change
- Produce a Digital Story Video
- Submissions Due April 9

For more information visit

<http://bit.ly/NJStudentClimateChallenge>



School finalists awarded grants ranging from \$2,500 to \$500



Policy & Planning

Tanya Rohrbach
Program Manager



Major Initiatives

1. Climate Change Planning
2. Complete & Green Streets





Climate Change Planning



Master Plan Requirement

- NJ Municipal Land Use Law amended in 2021
- Requires a “Climate Change-Related Hazard Vulnerability Assessment” (CCRHVA) in the Land Use Plan Element of the Master Plan.
- 7 provisions in the law.



RESILIENT 

Did you know NJ law now requires towns to include an assessment of climate vulnerabilities in the municipal master plan?

Get expert help to identify climate hazards and strengthen your community's resilience.

CLIMATE VULNERABILITY ASSESSMENT
TECHNICAL ASSISTANCE PROGRAM

SCAN ME





Technical Assistance Grant

- Through the NJ Department of Environmental Protection Resilient NJ Program, Sustainable Jersey is providing technical assistance for municipalities to complete or update a **Climate Change-Related Hazard Vulnerability Assessment (CCRHVA)**.
- Participants are selected through a competitive application process. Eligible applicants include any municipal government in New Jersey that has not previously received funded support through NJDEP's Resilient NJ program.



RESILIENT NJ



CLIMATE VULNERABILITY ASSESSMENT

TECHNICAL ASSISTANCE PROGRAM

Application Deadline: December 20, 2024



BUILT
SYSTEM



NATURAL
SYSTEM



SOCIAL
SYSTEM



ECONOMIC
SYSTEM



GOVERNANCE
SYSTEM

SCAN ME

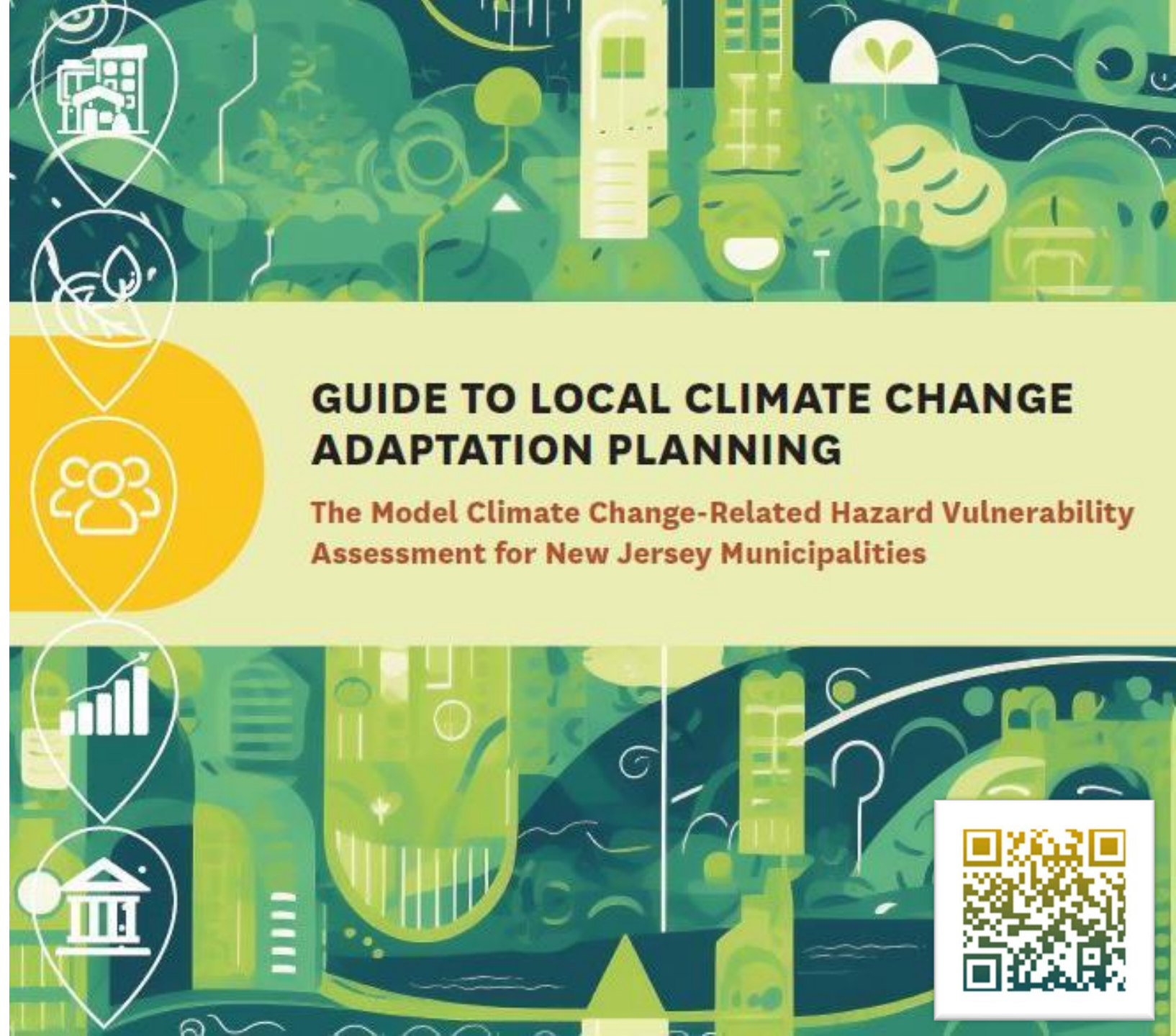




New Action

Comprehensive Climate Change-Related Hazard Vulnerability Assessment

- Points are earned by completing action components as part of the municipal process to complete a CCRHVA that meets the requirements of N.J.S.A. 40:55D-28.
- To accomplish a comprehensive CCRHVA, it is expected that the Guide to Local Climate Change Adaptation Planning will be utilized while completing this action.





Webinar

- Describes the methodology and process for completing a Climate Change-Related Hazard Vulnerability Assessment.
- Outlines the requirements of the Action (Comprehensive CCRHVA)
- Walks through Action components and a template for completing a “compliant” CCRHVA, meeting law provisions.
- Explains Vulnerability, Exposure, Sensitivity, and Adaptive Capacity in the context of climate change.



WEBINAR: December 3, 2024

12:00-1:00 pm

Climate Change-Related
Hazard Vulnerability Assessment



SCAN ME



BUILT
SYSTEM



NATURAL
SYSTEM



SOCIAL
SYSTEM



ECONOMIC
SYSTEM

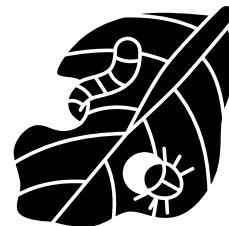
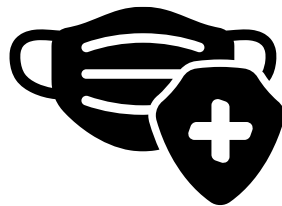
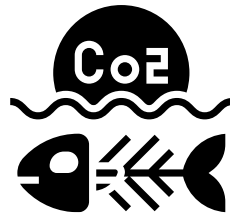
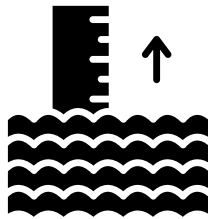
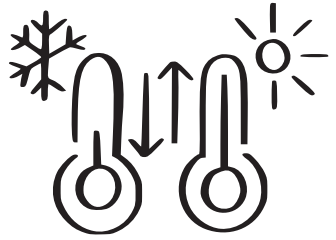
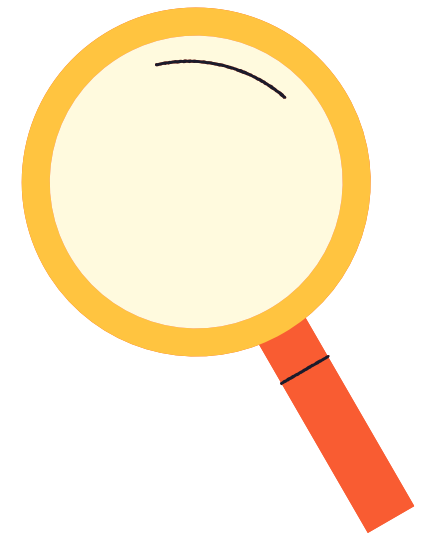


GOVERNANCE
SYSTEM

CLIMATE VULNERABILITY ASSESSMENT

TECHNICAL ASSISTANCE PROGRAM

A CCRHVA is an analysis of climate hazard impact...




Climate Hazards

- Extreme Temperature
- Drought
- Flooding
- Severe Weather
- Saltwater Intrusion
- Ocean Acidification
- Landslides
- Wildfire
- Disease
- Pests





Across all the systems that support the municipality

SYSTEM	 BUILT SYSTEM	 NATURAL SYSTEM	 SOCIAL SYSTEM	 ECONOMIC SYSTEM	 GOVERNANCE SYSTEM
FEATURE	<ul style="list-style-type: none">• Facilities & Infrastructure• Housing Stock & Businesses	<ul style="list-style-type: none">• Natural Lands Resources• Water Source Resources• Air Quality	<ul style="list-style-type: none">• People	<ul style="list-style-type: none">• Sustainable Economic Development• Working Lands• Outdoor Recreation	<ul style="list-style-type: none">• Equitable Land Use• Community Engagement• Jurisdictional Plans & Accountability

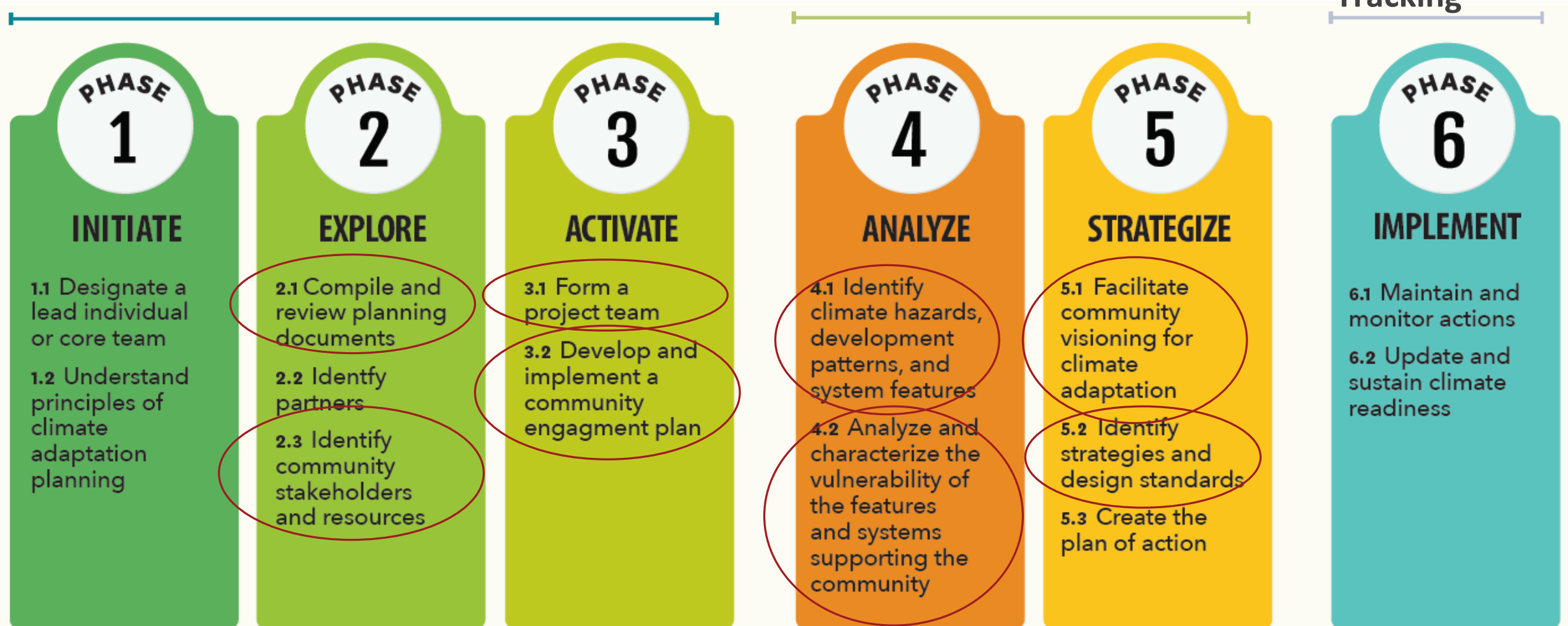


Inside the Guide:

Gearing up and Scoping

Analyzing and Prioritizing

Maintaining and Tracking





Coming Soon: Gold Star in Climate Readiness

Built System



- Create a Green Development Checklist
- Complete & Green Streets for All Policy
- Green Infrastructure Planning
- Green Infrastructure Implementation

Natural System



- Open Space Plan
- Anti-Idling Education & Enforcement Program
- Community Forestry Management Plan and NJUCF Accreditation
- Water Conservation Education

Social System



- Community Equity and Diversity Profile
- Heat Island Assessment and Mitigation Plan

Economic System



- GreenJobs / Economic Development
- Farmland Preservation Plans

Governance System



- Emergency Response - Emergency Communication Planning, Extreme Temperature Event Plan, Ready Set GO! Fire Company, Firewise Community, and Community Wildfire Protection Plans
- Water Ordinances - Enhanced Stormwater Management Control, Water Conservation
- Natural Resource Protection Ordinances- Environmental Assessment, Habitat Conservation and Tree Protection Ordinance

Comprehensive Climate Change-Related Hazard Vulnerability Assessment +



Climate Readiness Program

- ☐ **FREE TECHNICAL ASSISTANCE:** Municipal Climate Vulnerability Assessment
- ☐ **NEW ACTION** in the certification program: Comprehensive Climate Change-Related Hazard Vulnerability Assessment
- ☐ **BEST PRACTICE RESOURCE:** Guide to Local Climate Change Adaptation Planning



LEARN MORE on our program web page

Located in the NJ Highlands region?

Additional support and funding available specifically for Highlands municipalities

- ✓ Guidance for incorporating provisions of Highlands Regional Master Plan (RMP) into municipal climate change planning.
- ✓ Staff Liaison Support
- ✓ Grant funding



Download
Highlands
Guidance

SUSTAINABILITY AND CLIMATE ADAPTATION PLANNING: an Integrated Guide for Highlands Region Municipalities



More Information

Sarah Friend, Environmental Scientist
sarah.friend@highlands.nj.gov





Complete & Green Streets for All



Complete Streets Technical Assistance

Provides guidance to municipalities to advance a Complete Streets initiative

- Competitive application process
- 24 studies completed to-date; 5 in process



Implementation Examples

Municipality	Amount	Source	Project
Cranbury	-	Municipal	Bikeway installed during repaving
Dunellen	-	Municipal	Bikeway installed during repaving
Eatontown	\$275,000	NJDOT	Greenway
Manville	\$48,000	RAISE	RR grade crossings study
Passaic City	\$454,000	Transportation Alternatives	Streetscaping and bikeway construction
Seaside Heights	\$824,000	Transportation Alternatives	Streetscaping and bikeway construction
West Orange	\$780,000	Transportation Alternatives	Pedestrian crossing construction

Announcing:

- Two upcoming inaugural events for municipalities located in:
 - Salem,
 - Cumberland,
 - Cape May and
 - Atlantic counties



New Opportunity

FREE COMPLETE STREETS OUTREACH AND TECHNICAL ASSISTANCE PROGRAM

A new program for municipalities located in the South Jersey Transportation Planning Organization region of Salem, Cumberland, Cape May and Atlantic Counties to provide:

- ✓ A new grant opportunity to receive free technical assistance, with an informational webinar on **December 5, 2024**.
- ✓ Free training on Complete Streets, covering policies, implementation, and funding, on **December 9, 2024**.



SCAN ME

LEARN MORE, REGISTER
FOR FREE TRAINING
& INFORMATIONAL
WEBINAR



South Jersey
Transportation
Planning Organization



RUTGERS-NEW BRUNSWICK
Edward J. Bloustein School
of Planning and Public Policy
Alas M. Voorhees Transportation Center



Launching in 2025!

- **Demonstration Materials Lending Library**

To support communities in the SJTPO region to undertake temporary demonstration projects to explore Complete Streets initiatives, CCCTMA will create and support a lending library of materials.



South Jersey
Transportation
Planning Organization





New Energy Resources

Tracey Woods
Energy Program



Major Initiatives

1. Updates to NJ Community Solar Program Resources
2. Support for the IRS's Direct Pay Program
3. Community Energy Planning Grants
4. Coming Soon: Purchasing Resource Center





Community Solar Resources

New Community Solar Resources

Updates to Community Solar resources to reflect changes in the New Jersey Community Solar Program. Changes include:

- Guidance for the new municipal automatic enrollment program
- Certification action update -- points for municipality's that create automatic enrollment projects

Not familiar with Community Solar? Check out the New Jersey Community Solar Project Finder at Sustainablejersey.com/communitysolar

What is the Municipal Automatic Enrollment Project?

Coming in 2025 municipalities to form automatic enrollment community solar projects for low- and moderate-income residents

- Residents will see discount on electric bill, there will not be a separate bill for the subscription fee.
- Residents selected for inclusion in the project can opt-out for free.
- Municipalities can work with solar developers to secure solar capacity for their residents.
- The solar panels DOES NOT need to be located in the municipality to provide generation capacity for the project.



Direct Pay Resources

Bringing the benefits of Direct (Elective) Pay Tax Credits Under Inflation Reduction Act (IRA)

- Allows tax-exempt and governmental entities to receive payment equal to tax credits for qualifying clean energy projects
- Not a competitive grant or a loan program
- Currently authorized for 10 years

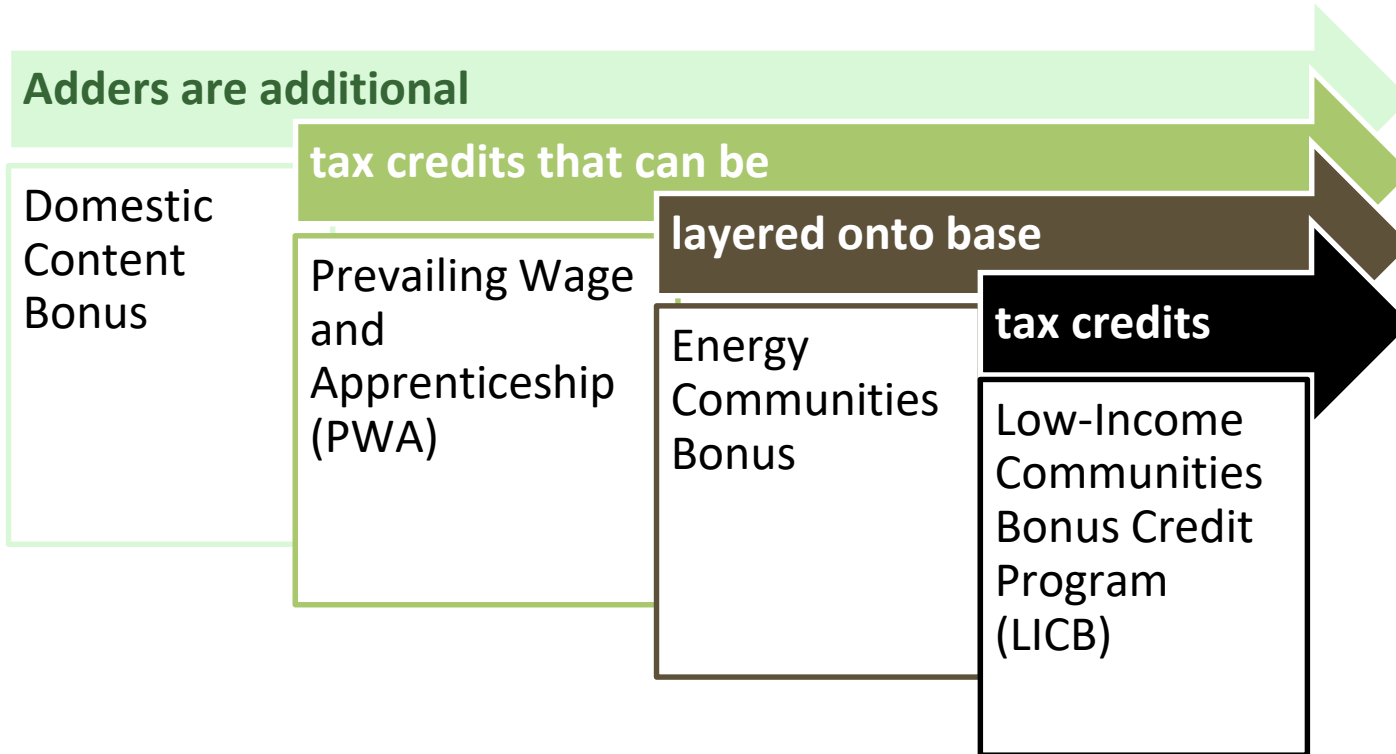
Disclaimer: These slides give a general overview of some Inflation Reduction Act tax provisions and are for informational purposes only. They are not meant to be tax guidance.

Direct Pay Eligible Projects

Eligible Projects	Eligible Projects	Base Tax Credits
EVs and EV Charging Equipment	Replace existing municipal vehicle fleet with new electric vehicles and associated charging infrastructure	<ul style="list-style-type: none">• Up to \$7,500 per light vehicle• Up to \$40,000 per larger vehicle• Up to 30% for eligible EV charging equipment (non-urban and low-income)
Investment Tax Credit (Most municipal and school renewable energy projects fall into this category)	solar, geothermal, small wind, energy storage, fuel cells, biogas, microgrid controllers, and combined heat and power properties	Typically 30% of costs
Production Tax Credit	wind, biomass, geothermal, solar, small irrigation, landfill and trash, hydropower, marine and hydrokinetic energy	Varies by project type

Full list of Direct Pay eligible tax credits at [irs.gov/pub/irs-pdf/p5817g.pdf](https://www.irs.gov/pub/irs-pdf/p5817g.pdf)

Direct Pay Addders



Example

Eligible project cost \$100,000

Base Incentive – 30% - \$30,000

Adders:

Domestic Content bonus - \$10,000

Low-Income Communities
Bonus Credit Program - \$10,000

Cost to Entity \$50,000

Using Direct Pay with Other Incentives

Direct Pay can be used in combination with other funding sources as long as total incentive does not exceed total project cost.

Example

Lightweight EV	\$24,000
NJ BPU Clean Fleet Grant	- \$4,000
Direct Pay Tax Credit	- \$7,500
Total cost to entity	\$12,500

Sustainable Jersey Energy Technical Assistance can help identify funding to use in combination with Direct Pay.

To request a technical assistance consultation, paste the following link to your browser and access the signup form

bit.ly/SJEnergyTARquestForm

Planning for Direct Pay

- Direct Pay will be available for at least ten years
- Entities typically must be sole owner of project
- Plan with Direct Pay in mind, consider rethinking:
 - Solar/renewables – Power Purchase Agreements (PPAs) and other leasing models
 - EVs – vehicle leasing
 - EV Charging – partnerships

**Right: Runnemedede
EV charging station**



**Below: Oradell EV
charging station**



Direct Pay: Filing Deadlines

General Rule

Filing deadline: 4.5 months after the end of the tax year your project was completed

Filing Options

Option # 1:
Calendar Year
Jan 23 - Dec 23

Option # 2:
Fiscal/Tax Year
July 23 - June 24

Filing Deadline

May 15

Nov 15

Six-month extended deadline
for some first-time filers,
including most municipalities
and school districts, for
projects completed in
2023/FY24

May 15, 2025

- ❑ File tax forms with IRS
- ❑ Entities need to pre-register to get IDs for each project, e.g. 10 EVs = 10 ID numbers
- ❑ It may take more than a month after registration to receive project IDs

Register:

<https://www.irs.gov/credits-deductions/register-for-elective-payment-or-transfer-of-credits>



Community Energy Planning

NJBPU Community Energy Planning Grants

Community energy planning is the process by which communities collaboratively select emissions-reducing initiatives that help fulfill the goals of state's Energy Master Plan.

In 2024, two planning grant award levels:

- All New Jersey municipalities are eligible for \$10,000 grant
- Overburdened Municipalities are eligible for \$25,000 grant

Sustainable Jersey has resources and technical assistance to support community energy planning.

2024 Application closed.

NJCleanEnergy.com/CEP

Community Energy Plan Implementation Grant

In 2024, Municipalities that have completed community energy plans or equivalent plans are eligible to receive **up to \$250,000** to implement projects identified in their community energy plans.

Community Energy Planning Resources



Community Energy Plan Resources

Community energy plans are short-range plans created by municipalities to identify energy initiatives to increase clean energy production, reduce energy use, and cut greenhouse gas emissions across an entire community.

New Jersey Board of Public Utilities created a [Community Energy Plan Grant \(CEPG\) program](#) to help New Jersey municipalities in developing a community energy plan. Sustainable Jersey has an array of resources to support the creation of community energy plans.

Community Energy Plan Resources

[Community Energy Planning Guide with RFP Template for Energy Consultants](#)

This document provides an overview of the community energy planning process. The document also includes guidance and a template RFP for using consultants for community energy planning.

Community Energy Plan Workplan Template

Workbook for selecting and prioritizing energy initiatives.

This document is available in two formats:

Writeable PDF - [click here](#)

Google sheet - [click here](#)

[Guide for Sustainable Energy Communities](#)

Case studies, best practices, and descriptions of energy initiatives

[Model Community Energy Plan](#)

Sample CEP for the fictional town of Gotham, NJ

For a Microsoft Word version, click [here](#)

Creating a CEP: Resources and Technical Assistance Webinar, 2021

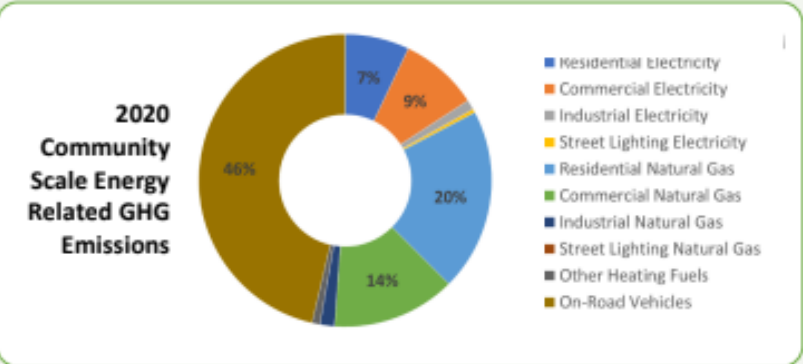
Slideshow presentation, click [here](#)



Sustainable Jersey Data Center

[Sustainable Jersey Data Center](#)

Comprehensive municipal data and interactive maps for all New Jersey municipalities, including transportation, energy usage, residential, and other data.



Above is a community GHG emissions by sector chart created by compiling data from electric and natural gas utilities, and transportation planning authorities. Visit the data center to download this chart and additional data for your community.

Grants and Free Technical Assistance

Visit the Sustainable Jersey [Community Energy Planning webpage](#) to learn about current funding opportunities.

Your municipality is eligible for free technical assistance to develop applications and create a community energy plan. Contact info@sustainablejersey.com to learn about available technical assistance.

Need help? Email info@sustainablejersey.com.

Strategy 1: Reduce Energy Consumption and Emissions from the Transportation Sector

- 1.1 Adopt Supportive Zoning and Regulations for EV Infrastructure
- 1.2 Train First Responders on EVs and EVSE
- 1.3 Train Non-Emergency Staff on EVs and EVSE
- 1.4 Purchase Alternative Fuel Vehicles
- 1.5 Improve Municipal Fleet Efficiency
- 1.6 Install Public EV Charging Infrastructure
- 1.7 Encourage Non-Municipal Fleets to Improve Efficiency
- 1.8 Encourage Workplace EV Charging Infrastructure
- 1.9 Community EV Outreach

Strategy 2: Accelerate Deployment of Renewable Energy and Distributed Energy Resources

- 2.1 Adopt Supportive Zoning and Permitting for Private Solar
- 2.2 Post Solar Permitting Checklist
- 2.3 Adopt Zoning and Permitting for Community Solar
- 2.4 Train First Responders on Solar
- 2.5 Train Non-Emergency Staff on Solar
- 2.6 Install On-Site Municipal Renewable Generation
- 2.7 Buy Renewable Energy for Municipal Facilities
- 2.8 Offer a Solar Employee Benefit Program
- 2.9 Institute a Community-wide Solar Purchasing Program
- 2.10 Implement Renewable Government Energy Aggregation (R-GEA)
- 2.11 Support Community Solar as Project Ambassador
- 2.12 Support Community Solar as Outreach Coordinator
- 2.13 Host a Community Solar Project on Municipal Property

Strategy 3: Maximize Energy Efficiency and Conservation and Reduce Peak Demand

- 3.1 Upgrade Energy Efficiency in Municipal Facilities
- 3.2 Residential Energy Efficiency Outreach Campaign
- 3.3 Commercial Energy Efficiency Outreach Campaign
- 3.4 Conduct Energy Efficiency Outreach to Large Energy Users

CEP Potential Initiatives

Strategy 4: Reduce Energy Consumption and Emissions from the Building Sector

- 4.1 Construct New Municipal Buildings as Model Green Buildings
- 4.2 Encourage Benchmarking and Commissioning for Existing Buildings
- 4.3 Require Developers to Complete Green Development Checklist
- 4.4 Conduct Outreach Targeting New Construction in the Community

Strategy 6: Support Community Energy Planning and Action with an Emphasis on Encouraging and Supporting Participation by Low- and Moderate-Income and Environmental Justice Communities

- 6.1 Make Community Energy Planning Inclusive
- 6.2 Conduct Energy Efficiency Outreach to Low- and Moderate-Income Residents
- 6.3 Support Shared Mobility Programs
- 6.4 Support Low- and Moderate-Income Community Solar Subscriptions
- 6.5 Conduct Energy Efficiency Outreach to Community-Serving Institutions

Strategy 7: Expand the Clean Energy Innovation Economy

- 7.1 Adopt Energy Storage Policies
- 7.2 Install an Energy Storage System
- 7.3 Develop Local Microgrid
- 7.4 Develop/Participate in a District Energy System

What can technical assistance look like?

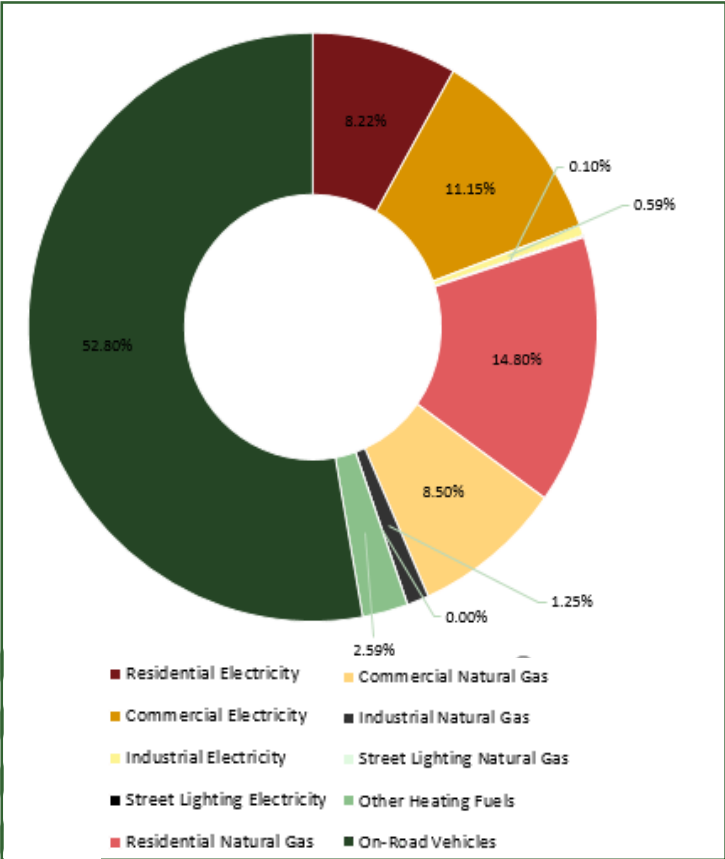
Data
Presentation



Resource
Investigation



Workplan
Template



New Jersey Board of Public Utilities Community Energy Plan Grant Program

The New Jersey Board of Public Utilities has announced a new round of **Community Energy Plan Grants (CEPG)** for all New Jersey municipalities. Community energy planning is the process by which communities collaboratively select emissions-reducing initiatives that help fulfill the goals of the **Sustainable Jersey** Energy Master Plan.

Sustainable Jersey has a wide range of programs to help communities complete this process, including:

- All New Jersey municipalities
- Overburdened municipalities
- \$25,000 grant

Completing a Community Energy Plan is a key step in the Sustainable Jersey process.

There are two grant award levels:

- All New Jersey municipalities
- Overburdened municipalities

Community Energy Plan Grants

A	B	C	D	E	F	G	H	I	J
1.1 Adopt Supportive Zoning and Regulations for EV Infrastructure									
2									
3									
4	Status in CEP:	Initiative Summary: Pass NJCA's Model Statewide Municipal EV Ordinance specifying electric vehicle charging stations (EVSE) as a permitted accessory use, establishing the permitting process for charging stations, and requiring Make-Ready and EVSE parking in new multifamily developments and parking lots. Modify the model ordinance standards for safety, signage, etc. as needed.							
5	Initiative included in:								
6	Current Status:	Measures of Success: (modify to suit your community) • "Reasonable Standards" language modified and finalized • Ordinance passed • Make-Ready and EV charging parking minimums posted on the municipal website				Resources: • NJCA's Model Statewide Ordinance • US DOE's Blueprint for EV Charging Infrastructure for the Community • Sustainable Jersey's Make Your Town Electric Vehicle Friendly action			
7									
8	Potential Stakeholders:	Initiative	Planned Initiative	Anticipated Initiative	Anticipated Funding	Obstacles	Next steps: (specific and tangible):		



Purchasing Resource Center

Sustainable Jersey Purchasing Resource Center

This **upcoming tool** will assist you in purchasing key green technologies:

1. Electric vehicles (EVs)
2. Electric vehicle supply equipment (EVSE)
3. Fleet telematics
4. Idle reduction technology

The Center will include offerings from vendors/companies in these spaces so you can ***drive sustainability forward with ease.***

Follow us to stay informed on this resource and more!





Sustainable Jersey Purchasing Resource Center

Helping you drive sustainability forward with ease!



About the Sustainable Jersey Purchasing Resource Center

Introducing the Sustainable Jersey Purchasing Resource Center! We're thrilled to unveil this dynamic online hub designed specifically for school districts and municipalities to access sustainable equipment and services. Dive into a wealth of purchasing resources, key features of the Purchasing Resource Center:

- Cooperative Purchasing and Purchasing Contract listings are made easy to find
- Quote documents for budgeting and purchasing are included for items not on purchasing cooperatives

In the pilot phase, we are focusing on electric vehicles and charging infrastructure. This initiative simplifies your procurement process, slashes costs, and empowers you to make a profound environmental impact.

Disclaimer: All offerings seen in this resource are coming directly from the vendors. We strongly encourage you to connect with the vendors to ensure the validity of the offerings and to involve your purchasing staff in this essential process.

What are you shopping for?

TRANSPORTATION

- [Alternative Fuel Vehicles](#)
- [EV Charging Equipment](#)
- [Fueling/Charging Equipment](#)
- [Idle Reduction Technology](#)
- [Telematics](#)
- [Fleet Inventory Tools](#)

GROUNDS MAINTENANCE

- [Landscaping Equipment](#)

FUTURE OPTIONS

Follow us to stay informed! IG: [Sustainable_Jersey](#) | Twitter: [@SJ_Program](#) and [@SJ_Schools](#) | FB: [@SustainableJersey](#) | LinkedIn: [sustainable-jersey](#)



The Sustainable Jersey Purchasing Resource Center was made possible through funding from the New Jersey Board of Public Utilities.

ABOUT THE NEW JERSEY BOARD OF PUBLIC UTILITIES (NJBPUI)

The New Jersey Board of Public Utilities ("NJBPUI" or "Board") is the state agency with authority to oversee the regulated utilities, which provide critical services such as natural gas, electricity, water, telecommunications, and cable television. The law requires the Board to ensure safe, adequate, and proper utility services at reasonable rates for customers in New Jersey.

ABOUT THE NEW JERSEY CLEAN ENERGY PROGRAM (NJCEP)

NJCEP, established on January 22, 2003, in accordance with the Electric Discount and Energy Competition Act (EDECA), provides financial and other incentives to the State's residential customers, businesses and schools that install high-efficiency or renewable energy technologies, thereby reducing energy usage, lowering customers' energy bills and reducing environmental impacts. The program is authorized and overseen by the New Jersey Board of Public Utilities (NJBPUI).

ABOUT SUSTAINABLE JERSEY

Sustainable Jersey is a certification program for municipalities in New Jersey. Launched in 2009, Sustainable Jersey is a nonprofit, nonpartisan organization that supports community efforts to reduce waste, cut greenhouse gas emissions, and improve environmental equity. It provides tools, training and financial incentives to support and reward communities as they pursue sustainability programs. Sustainable Jersey is one hundred percent voluntary and each town can choose whether it wants to get certified and the actions it wants to do in order to achieve enough points to get certified.



Sustainable Jersey Purchasing Resource Center Alternative Fuel Vehicles

Filter by Co-op/Contract

Filter by Fuel Type

Filter by Manufacturer

Filter by Vehicle Type

Filter by Price Range

[Return to Purchasing Resource Center Home Page](#) [Reset Filters](#) [FAQ Page and Glossary](#)

Vehicle Information	Vendor Information	Co-op/Contract	Vehicle Class	URL for Spec Sheet (for Co-op) OR Quote	Vehicle Price	Direct Pay Eligible	Delivered within three months?	Customization	Offer Expiration
Manufacturer: McLaren's Mobile Model: The Legendary Ride Year: 2024 Color: Yellow Range: 250 miles	Vendor Name: Swarley's Electric Motors Point of Contact: Marshall Eriksen Preferred Contact Method: marshall@swarleys.com	Educational Services Commission of NJ (Formerly Middlesex Regional Educational Services Commission)	Class 1 2	swarleyselectric.com/mclarens	Vehicle price: \$50,000 Destination price: \$1,800 Total purchase price: \$51,800	Yes	No	Wraps	Feb 24, 2025
Manufacturer: Gilmore Auto Model: Stars Hollow Cruiser Year: 2024 Color: Lorelai's Lavender Range: 200 miles	Vendor Name: Stars Hollow Vehicles Point of Contact: Luke Daines Preferred Contact Method: luke@shvehicles.com	Educational Services Commission of NJ (Formerly Middlesex Regional Educational Services Commission)	Class 1 2	starshollowvehicles.com/rorys	Vehicle price: \$35,000 Destination price: \$1,200 Total purchase price: \$36,200	Yes	Yes	N/A	Jan 20, 2025
Manufacturer: Ford Model: Interceptor Year: 2024 Color: White Range: 250 miles	Tracy's Ford Tracy Woods woodst@tcnj.edu	Morris County Cooperative Pricing Council	Class 1 2	www.blahblahblah.pdf	Vehicle price: \$5 Destination price: \$1 Total purchase price: \$6	Yes	Yes	police lights	Dec 31, 2024

1 - 3 / 3

Disclaimer: Sustainable Jersey has created the Purchasing Resource Center to serve as a guide for municipalities and schools in New Jersey who are pursuing green transportation technologies. The information provided in this resource should be verified by each user. It is important to note that Sustainable Jersey is not affiliated with any of the vendors listed on this resource, and does not sell any products or services. Sustainable Jersey is a non-profit organization that seeks to empower communities with the tools, training and financial incentives necessary to pursue critical sustainability initiatives. Learn more about [Sustainable Jersey](#).

Adding Products to this Database

If you are a vendor for an eligible product and would like to add your offering to this database, please email info@sustainablejersey.com and instructions will be sent to you.



**Sustainable Jersey has
provided technical
assistance to nearly 100
municipalities and
school districts**

**Some of the content covered in the
technical assistance program:**

- Applying for State and utility energy efficiency incentives
- Energy tracking and management
- Assistance with fleet electrification and renewable energy planning
- Other sustainability planning

By the way, if you are interested in getting free energy technical assistance for your school district or municipality email **info@sustainablejersey.com** to learn about current technical assistance options.



And More...

Lauren Skowronski, Assistant Director
Melanie McDermott, Senior Researcher
Samantha McGraw, Senior Department Administrator

Working Towards a Healthier New Jersey

- **Technical Assistance** to help plan local health assessments and develop action plans to improve community health; go for Health Gold!
- **5 Gold Stars in Health** (Chatham Borough, Hillsborough, Maplewood, Princeton & Woodbridge)

Town-Wide Gas Leaf Blower Restrictions

- **Support Efforts**

- Landscaper registry (5 pts)
- Public education campaign (5 pts)
- Equipment migration (5-10 pts)
- Incentivize electrification (10 pts)

- **Adopt a Ban & Promote**

- Seasonal (10 pts)
- Full Year (25 pts)



Farmers Markets

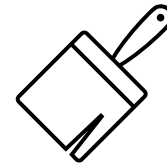
- ✓ **Adding** clarity on how you can *meaningfully* support an existing market
- ✓ **Adding** options for getting food where it's needed
 - Farm stands / pop ups
 - Mobile markets



Lead Reduction Action Updates

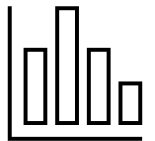
Passage of Lead Safe Certification law, P.L.2021, c.182. 5 (mandates regular lead inspections of rental properties) calls for action updates:

Comprehensive Lead Strategy



- Data/risk-based comprehensive strategy for lead exposure prevention

Lead and Housing Hazards Data-sharing




- Interdepartmental (housing, health) data on lead hazards in buildings
- Report ***property-linked*** data in accessible database or spreadsheet

Lead Reduction Action Updates

- Lead Education & Outreach Programs
- Lead Blood Screening Campaign
 - Increase % children w/blood lead level screening tests
- Healthy Homes Inspection & Training
 - Training on environmental home health hazards
 - Integrate lead & healthy homes inspections
 - Voluntary healthy home evaluations or testing

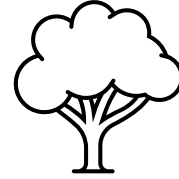


Lead Reduction Action Updates

- Removing Lead in Drinking Water 
 - Free/reduced-cost voluntary *tap water* testing program
 - ordinance requiring lead testing or remediation of drinking water before ownership or tenancy change
- *Activities municipalities undertake to implement the Lead Service Line Replacement Act (P.L.2021, Ch. 183) are not eligible for points.*

Upcoming Updates

- Tree Protection and Replacement Ordinance



- Standards beyond compliance w/ DEP Model Ordinance to meet new MS4 stormwater permitting requirements
 - - System for permitting, inspection, fee or replacement

- Municipal Communications Strategy



- Inventory municipal communication channels & gaps
- Identify marginalized groups, barriers & how to eliminate
- Identify resources & develop action plan

Other Action Updates

<u>Category</u>	<u>Action</u>	<u>Points</u>	<u>Status</u>
Community Partnership & Outreach	Green Team	10 to 15	Updated
Land Use & Transportation	<i>Build-Out Analysis</i>	<i>10</i>	<i>Retires 12/31/24</i>
	Community Design for All Ages	5 to 25	Updated
	<i>Green Building & Environmental Sustainability Element</i>	<i>10</i>	<i>Retires 12/31/24</i>

Stay up to date by visiting the Program Updates page: sustainablejersey.com/actions/program-updates

Other Action Updates

<u>Category</u>	<u>Action</u>	<u>Points</u>	<u>Status</u>
Operations & Maintenance	Recycled Office & Restroom Paper Supplies	10	New 2025
	Recycled Parks & Recreation, Transportation & Road Materials	10	
Waste Management	Litter Prevention Education & Compliance	15 to 20	New 2025

Category Changes

Emergency Management & Resiliency category **renamed to *Emergency Management***

Heat Island Assessment & Mitigation Plan **moved to *Land Use & Transportation category***

Stay up to date by visiting the Program Updates page: sustainablejersey.com/actions/program-updates

Municipal Waste Actions

General

- ***Prescription Drug Safety & Disposal****
- Recycling & Waste Reduction Education & Compliance
- Litter Prevention Education & Compliance
New 2025

Recycling

- Commercial & Institutional
- ***Community Paper Shredding Day****
- Construction & Demolition Waste
- Food Waste
- Household Hazardous Waste
- ***Non-Mandated Materials****
- ***Recycling Depot****

Reduction

- Backyard Composting Program
- Grass – Cut It & Leave It
- Materials Reuse Program
- Pay-As-You-Throw Program
- Reusable Bag Education Program
- Waste Audit of Municipal or School Buildings

**** Most popular actions***

Non-Mandated Materials

5 to 60 Points

- Recycling initiatives that target materials **not designated as mandatory recyclable items** as per state law, or the applicable county recycling plan.
- Collected locally on regular basis through curbside pick-up or drop-off at the municipal recycling depot.
- Options for Points: Bulky rigid plastics, carpet and foam padding, shrink wrap, plastics listed #3-7, ceiling tiles, textiles, cooking oil, other items (up to two items)



Polystyrene collection in Monroe, Middlesex County

Materials Reuse

10 Points

- Opportunity to bring together residents looking to discard unnecessary/unwanted items with those looking for used items in good condition.
- Programs must be ongoing
- Examples include:
 - Online yard sale platforms run by municipality, free markets, regularly occurring yard sales, book swap programs

Next Session: Strategies for Reducing Waste and Building Sustainable Communities
10:45am – 12:00pm, Room 420

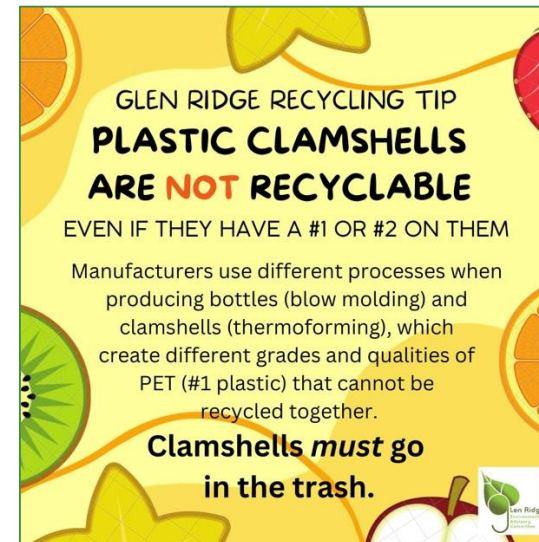


Summit Free Market

Recycling & Waste Reduction Education & Compliance

- Develop and implement a comprehensive Recycling and Waste Reduction Education and Compliance Strategy, enact municipal recycling ordinance that incorporates compliance measures, conduct regular inspections and perform education & outreach.
- Develop accepted materials flyer – visual depiction of what can/cannot be recycled.
- Educate about both recycling and waste reduction.

15 to 20 Points



Glen Ridge Borough

Glen Ridge is Green

RECYCLING GUIDE

Single Stream Recycling

 **ALL CARDBOARD, BOXBOARD & CHIPBOARDS**
 **ALL PAPER & PAPER PRODUCTS**
 **ALL CLEAR, BROWN & GREEN GLASS**

 **ALL TIN, ALUMINUM & STEEL**
 **#1, #2, #5 PLASTIC BOTTLES, JUGS & CONTAINERS**

 **SCAN TO VIEW CALENDAR**

What You Need To Know

- WEEKLY PICK UP, VARIES BY NEIGHBORHOOD
- PLACE AT CURB NIGHT BEFORE TO ENSURE COLLECTION
- CONTAINERS MUST BE FREE OF DEBRIS & FOOD CONTAMINATION

 **PLASTIC BAGS**
 **PLASTIC LIDS OR CAPS**
 **WAX CARDBOARD**
 **BATTERIES**

 **CLAMSHELL OR PRODUCE CONTAINERS**
 **FROZEN FOOD BOXES**
 **SOILED PAPER, NAPKINS OR PIZZA BOXES**
 **STYROFOAM**

Glen Ridge Accepted Materials Flyer

Monthly Recycling

 **CLEAN, WHITE EPS (EXPANDED POLYSTYRENE) (AKA STYROFOAM)**
 **ELECTRONICS**
DISPOSAL OF ELECTRONICS IN REGULAR GARBAGE OR RECYCLING IS AGAINST THE LAW.

 **RECHARGEABLE BATTERIES**
NICKEL CADMIUM (Ni-Cd)

- LITHIUM ION (Li-Ion)
- NICKEL METAL HYDRIDE (Ni-MH)
- SMALL SEALED LEAD ACID (SSLA/Pb)
- NICKEL ZINC (Ni-Zn)

What You Need To Know

- DROP-OFF 2ND SATURDAY OF THE MONTH
- PUBLIC WORKS MAINTENANCE YARD (122 CARTERET STREET)
- 9:00AM-1:00PM

 **FreeCycle Day**
FIRST WEDNESDAY OF EVERY MONTH
REGISTRATION IS REQUIRED
GLENRIDGENJ.ORG/FREECYCLE.HTM

 **Bulk Waste**
FIRST THURSDAY OF EVERY MONTH
VISIT WEBSITE FOR BULK DO'S & DON'TS
GLENRIDGENJ.ORG/BULKWASTE.HTM

Other Stuff

VISIT GOGLENRIDGEGREEN.ORG/HOW-DO-I-GET-RID-OF-1 OR SCAN

 **SCRAP METAL**
 **ITEMS WITH FREON (LARGE HOUSEHOLD APPLIANCES)**
 **COMPACT FLUORESCENT LIGHT BULBS**
 **HAZARDOUS MATERIALS (GASOLINE, ETC)**
 **SOFT PLASTICS (PLASTIC BAG, PLASTIC WRAPPING, ETC.)**

 **CLAMSHELL OR PRODUCE CONTAINERS**
 **FROZEN FOOD BOXES**
 **SOILED PAPER, NAPKINS OR PIZZA BOXES**
 **STYROFOAM**

GlenRidgeNJ.org GoGlenRidgeGreen.org

For Full Information, Do's & Don'ts, Drop Off Locations, Pickup Dates, or to download a Digital Version of this guide.

FUNDING PROVIDED BY: SUSTAINABLE JERSEY

Borough of Glen Ridge, New Jersey
Published by Erik DeLine • December 1, 2022 •

Join Glen Ridge Environmental Advisory Committee and the Newark Green Team to learn more about where our waste goes and ways to reduce, reuse and recycle to improve our communities, save money, and protect clean water and air.

Monday, December 5, 2022
7:00pm - 8:00pm

Registration: <https://us02web.zoom.us/j/8tZEr.../success...>

Sponsored by Sustainable Jersey.

WHERE DOES YOUR WASTE GO?

VIRTUAL WEBINAR

DEC. 5, 7:00PM

JOIN THE GLEN RIDGE ENVIRONMENTAL ADVISORY COMMITTEE AND THE NEWARK GREEN TEAM TO LEARN MORE ABOUT WHERE OUR WASTE GOES AND WAYS TO REDUCE, REUSE, REFUSE AND RECYCLE TO IMPROVE OUR COMMUNITIES, SAVE MONEY, AND PROTECT CLEAN WATER AND AIR.

REGISTER: <https://us02web.zoom.us/j/8tZEr.../success...>

Green TEAM Sustainable JERSEY

Glen Ridge "Where Does Your Waste Go?" Virtual Webinar Promotion

Food Waste

10 Points

- Active food waste recycling program – pilot programs qualify if less than 2 years old.
- Describe how program started, sources of food waste, how food waste is collected, collection schedule, and identify food waste recycling market.
- Provide education & outreach to the community.



Food waste drop off site



Acceptable materials

- Bread, cereals, grains & all other baked goods
- Coffee grounds & filters, tea bags
- Fruit & veg trimmings
- House plant trimmings
- Packaged food waste & produce stickers
- Plate waste & all other food waste



Unacceptable materials

- Black plastic bags or liners
- Glass & metal
- Loose recyclable plastics & rubber
- Milk
- Pet waste
- Recyclable cardboard & paper
- Separated fats, greases & oil



Collecting and depositing food waste in plastic bags is acceptable





Residential Composting



You drop it off or We pick it up

<h4>1 Sign up!</h4> <p>Register for FREE compost drop off by taking the "what can you compost" quiz at www.hobokennj.gov/compost.</p>	<h4>1 Sign up!</h4> <p>Register for weekly (\$39/mo) or bi-weekly (\$24/mo) pickup from Community Compost Company at www.communitycompostco.com/.</p>
<h4>2 Collect</h4> <p>Collect food scraps and paper products in any airtight container or paper bag. <i>Pro Tip:</i> store it in the freezer!</p>	<h4>2 Schedule Pickup</h4> <p>Community Compost Company emails you to schedule your weekly or bi-weekly pickup day/location, and drops off an empty bucket.</p>
<h4>3 Drop off</h4> <p>The City will email you a combination to open the green compost bin. Drop off your food scraps at one of the FREE drop off sites:</p> <ul style="list-style-type: none">• City Hall 94 Washington St• Church Square Park 400 Garden St• Elysian Park 1100 Hudson St• 7th & Jackson Plaza 600 Seventh St <p>Please <u>only</u> drop food scraps in the green bin!</p>	<h4>3 Full Bucket</h4> <p>Place your bucket filled with food scraps at your doorstep on your pickup day.</p>
<p>Composting diverts waste from the landfill, reduces greenhouse gas emissions, and saves taxpayers money.</p>	<h4>4 Empty Bucket</h4> <p>Community Compost Company picks up your full bucket and drops off a clean, empty bucket.</p>
	<h4>5 Get soil!</h4> <p>Twice per year, Community Compost Company drops off finished compost (soil) with your clean, empty bucket.</p>

www.hobokennj.gov/compost

2025 Certification Cycle



	FIRST ROUND	SECOND ROUND	THIRD ROUND
Submission Deadline	Feb. 23	May 16	July 31
Return Date	Early-April	Mid-June	Late-Sep.

- Municipalities can submit for the first time in any round, but it is recommended to submit in the first two rounds to receive feedback to help achieve certification.
- Informational webinar December 10 at 12:00pm

More information & webinar registration:
sustainablejersey.com/certification/2025-certification-cycle



Tinton Falls achieves bronze certification in 2023 and receives the Rookie of the Year Award

Green Team Resources

1. What is a Green Team?
 - a. Information about forming your green team & sample docs.
2. Working on Certification
 - a. Master Action Tracking Spreadsheet
 - b. Application User Guide
 - c. Certification-specific webinar recordings & presentations
 - d. **Crossing the Finish Line Webinar**
– identifies actions to consider including in your application.

sustainablejersey.com/resources/green-team-resources/working-on-certification/

The screenshot shows the Sustainable Jersey website. The header features the Sustainable Jersey logo (a green circle with 'SUSTAINABLE JERSEY' and 'A Better Tomorrow, One Community at a Time') and navigation links: Certification, Actions, Grants, Events, Resources (circled in red), and Get Involved. A left sidebar contains a menu with 'Data Center', 'Publications', 'Green Team Resources' (checked and highlighted with a red box), 'Presentations', and 'Funding Database'. Under 'Green Team Resources', there are links for 'What is a Green Team?', 'Working on Certification', 'Green Team 2.0', and 'Promoting Your Green Team'. The main content area is titled 'Green Team Resources' and contains four cards: 'Creating a Green Team' (Learn what you need to know when establishing a green team. Read More), 'Green Team 2.0' (Learn how you can take your established green team to the next level. Read More), 'Working on Certification' (View resources to help green teams achieve certification. Read More), and 'Green Team Promotion' (Read helpful tips on how to promote the work of your team. Read More).

Webinar Recordings

- Webinars on different action topics available to view at your convenience.
- Presentations from other conferences available as well under the general Presentations page.

sustainablejersey.com/resources/presentations/webinars/

The screenshot shows the Sustainable Jersey website. At the top left is the logo with the text "SUSTAINABLE JERSEY", "CERTIFIED", and "A Better Tomorrow, One Community at a Time". The top navigation bar includes "Certification", "Actions", "Grants", "Events", "Resources" (circled in red), and "Get Involved". A left sidebar menu lists "Data Center", "Publications", "Green Team Resources", "Presentations" (highlighted with a red box), and "Funding Database". Under "Presentations" are links for "Sustainability Summit", "NJLM Conference", "Trainings", and "Webinars". Below the sidebar is a "New Jersey Community Solar Project Finder" section. The main content area is titled "Webinar Recordings & Presentations" and contains a paragraph about webinar recordings, a "Category Navigation" section with two columns of links, and two featured webinar sections: "New Resources for Arts & Creative Culture Actions Webinar" (December 2021) and "Creating Creative Communities" (May 2020). A bottom sidebar titled "Navigate to:" lists various category links.

Sustainable Jersey
A Better Tomorrow, One Community at a Time

Certification Actions Grants Events **Resources** Get Involved

> Data Center

> Publications

> Green Team Resources

✓ **Presentations**

- Sustainability Summit
- NJLM Conference
- Trainings
- Webinars**

> Funding Database

New Jersey Community Solar Project Finder

Webinar Recordings & Presentations

To further assist you in the certification process, we have provided links to previous webinar recordings and presentations that supply information relevant to all aspects of our program. If you were unable to attend one of our online presentations, this is a great opportunity to learn about what you missed. Webinars are listed by action category.

Category Navigation

- Arts & Culture
- Brownfields
- Certification & Recertification
- Community Partnership & Outreach
- Emergency Management & Resiliency
- Energy
- Grants Program
- Green Design
- Health & Wellness
- Land Use & Transportation
- Local Economies
- Natural Resources
- Public Information & Engagement
- Waste Management

Arts & Culture

New Resources for Arts & Creative Culture Actions Webinar

December 2021

- [View Recording](#)
- [Download Presentation](#)

Creating Creative Communities

May 2020

- [View Recording](#)
- [Download Presentation](#)

The Art of Sustainability - Creative Placemaking and Your Community

Navigate to:

- Arts & Culture
- Brownfields
- Certification & Recertification
- Community Partnership & Outreach
- Emergency Management & Resiliency

Participants Map Search

Use the [Participating Municipalities & Approved Actions](https://sustainablejersey.com/certification/search-participating-municipalities-approved-actions) (*sustainablejersey.com/certification/search-participating-municipalities-approved-actions*) page to find examples of documentation from certified towns and connect with municipal green teams

Search by action

By Certified Action

Arts & Creative Culture

☒ Establish a Creative Team

☐ Creative Assets Inventory

☐ Creative Placemaking Plan

☐ Municipal Commitments to Support Arts and Creative Culture

☐ Utilizing Your Creative Assets

View certified towns approved for that action

MUNICIPALITY	COUNTY	CERTIFICATION
Asbury Park City	Monmouth	SILVER
Atlantic Highlands Boro	Monmouth	BRONZE
Belleville Twp	Essex	BRONZE
Bogota Boro	Bergen	BRONZE
Bordentown City	Burlington	SILVER
Bradley Beach Boro	Monmouth	BRONZE
Brigantine City	Atlantic	BRONZE
Cape May City	Cape May	SILVER
Chatham Boro	Morris	SILVER

View certification report for example documentation



Bordentown City
Certification Level: Silver
Certified On: October 28, 2022
Total Points: 615
Certification Report: [View Report](#)
Applicant Profile: [View Profile](#)

Sustainable Jersey Technical Assistance

COMPLETE STREETS TECHNICAL ASSISTANCE

Municipalities in Salem, Cumberland, Cape May and Atlantic County are eligible to apply for free technical services to advance a Complete Streets initiative.

Register for a technical assistance informational webinar on **December 5 from noon to 1:00pm** to learn how to: identify a project in your community; what's involved in the application; as well as how New Jersey municipalities have used guidance from a similar program to secure funding to create lasting change.

Register for a free interactive in-person workshop on **December 9 from 10:00am-3:00pm** in South Jersey on **Implementing Complete Streets at the Local Level**.

CLIMATE VULNERABILITY ASSESSMENT TECHNICAL ASSISTANCE

Municipalities in New Jersey are eligible to apply for technical assistance to complete a Climate Change-Related Hazard Vulnerability Assessment (CCRHVA).

Register for an informational webinar on **December 3, from noon to 1:00 pm**, to learn how municipalities can fulfill this mandate, gain points in the Sustainable Jersey Certification Program, and enhance local climate resilience.

SUSTAINABLE JERSEY ENERGY TECHNICAL ASSISTANCE

Energy Technical Assistance includes:

- Establish energy tracking system for facility energy use
- Identify and apply for NJCEP and/or utility incentives for facility upgrades

Energy TA funded by:

- NJ Board of Public Utilities
- Investor-owned utilities:
 - Elizabethtown Gas
 - New Jersey Natural Gas
 - PSE&G
 - South Jersey Gas

LEARN MORE

For more information and to apply for technical assistance visit:

<https://bit.ly/SJgrants>



We are here to support you!

- Stay updated on grants, technical assistance, events and program updates by **joining our mailing list**
- **Schedule a certification consultation** with staff by emailing us at info@sustainablejersey.com
- **Questions?** Visit our website sustainablejersey.com or contact us at info@sustainablejersey.com or 609-771-2938
- Visit us at **Booth 103** during the NJLM Conference



Scan QR Code to
join our mailing list

Save the Date! 2025 New Jersey Sustainability Summit

Friday, May 9, 2025, 9:00am – 4:00pm (registration opens 8:00am)

Bell Works, Holmdel, NJ

Sustainable Jersey Sessions - New Jersey League of Municipalities

FOOD WASTE RIPE FOR CHANGE

Tuesday, 11/19, 2:00pm – 3:15pm, Room 421

BUILD BETTER STREETS: LOCAL PERSPECTIVES TO ENHANCE MOBILITY AND SAFETY

Tuesday, 11/19, 3:45pm – 5:00pm, Room 420

SUSTAINABLE JERSEY NEW ACTIONS AND INITIATIVES

Wednesday, 11/20, 9:00am – 10:15am, Room 421

STRATEGIES FOR REDUCING WASTE AND BUILDING SUSTAINABLE COMMUNITIES

Wednesday, 11/20, 10:45am – 12:00pm, Room 420

INTEGRATING ELECTRIC VEHICLES INTO THE MUNICIPAL FLEET

Wednesday, 11/20, 10:45am – 12:00pm, Room 421

COMMUNITY SOLAR/MAKE YOUR TOWN SOLAR FRIENDLY

Wednesday, 11/20, 2:00pm – 3:15pm, Room 420

BOOSTING BENEFITS OF YOUR MUNICIPAL TREE CANOPY

Wednesday, 11/20, 3:45pm – 5:00pm, Room 421

POWER OF A PLAN: NAVIGATING COMMUNITY ENERGY PLANNING INITIATIVES

Thursday, 11/21 9:00am – 10:15am, Room 421

STORMWATER MANAGEMENT: THE NEW MS4 FRONTIER

Thursday, 11/21 10:45am – 12:00pm, Room 420

Slides for all our sessions will be posted on our website

<https://www.sustainablejersey.com/resources/presentations/njlm-conference/>

Sustainable Jersey Underwriters and Sponsors

Program Underwriters



Corporate Sponsors

