



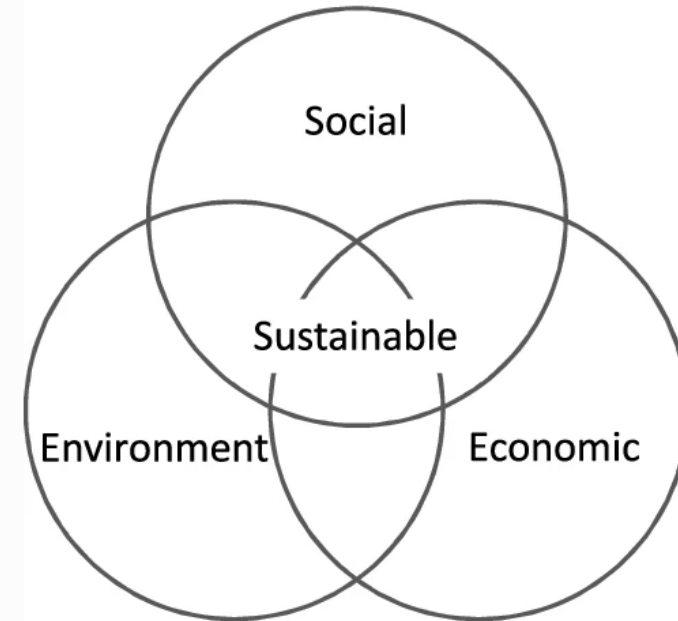
Sustainable Jersey Program Update

New Jersey League of Municipalities

November 16, 2022

What is Sustainability?

Sustainability is most often defined as meeting the needs of the present without compromising the ability of future generations to meet theirs. It has three main pillars: social, economic, and environmental.



The Way Forward

Build the movement



Build local capacity



**Everyone is included and
benefits**



**Share the movement beyond
our borders**



A Framework for Action

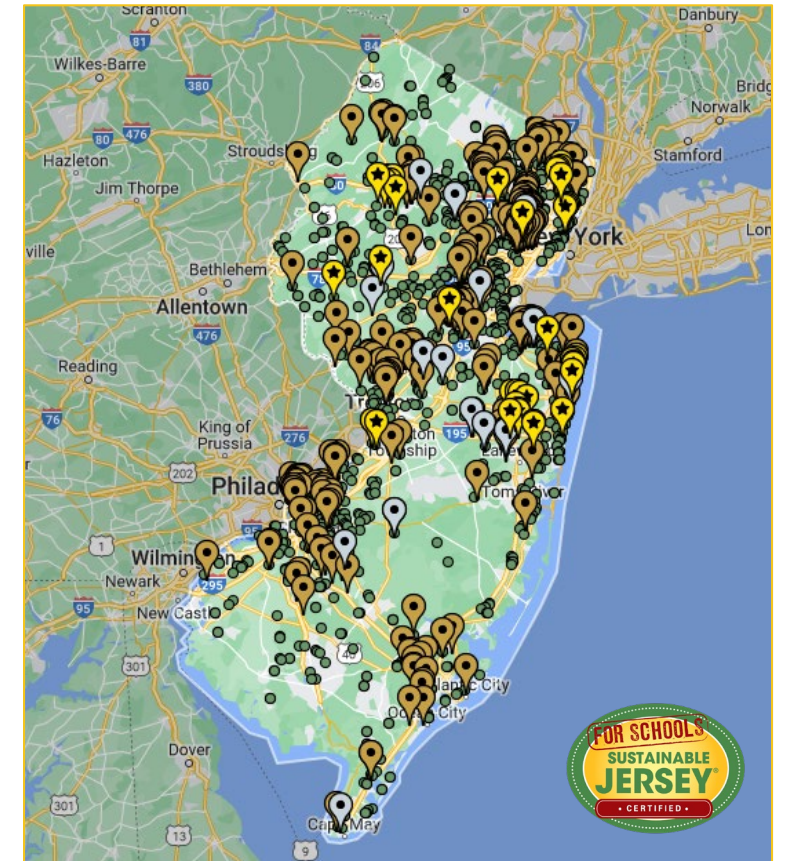
- Coordinates priorities, resources, and policy among public and private state and local actors
- Develops **tools**, **resources**, and **guidance** to make progress
- Provides access to **grants** and **assistance**
- **Recognizes** accomplishments

Statistics

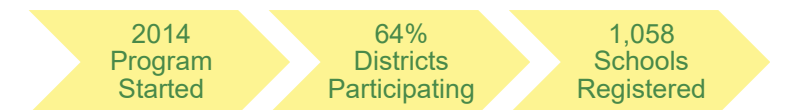
23,467
Actions
Implemented



Sustainable Jersey



Sustainable Jersey for Schools





Water Gold

Launched in May 2021

- Woodbridge Township - 2021
- Readington Township - 2022



Sustainable Jersey's Water Goal:

New Jersey's water system provides an adequate and affordable supply of clean and safe drinking water for everyone, while also safeguarding water sources to ensure sufficient quality and supply to support healthy ecosystems and biodiversity.

Source: The New Jersey Sustainable State of the State Report, 2015, Sustainable Jersey



Health Gold

- Launched July 2021
- 2 Gold Stars in Health awarded in 2022!

 Princeton

 Woodbridge



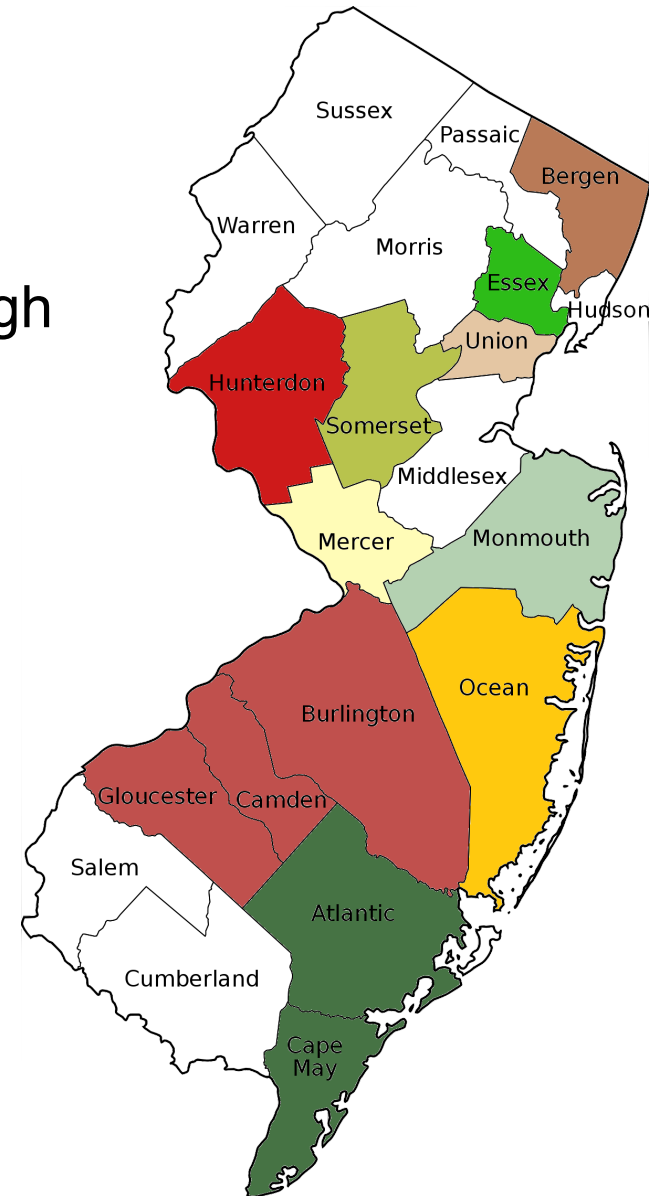


Regional Hubs

Ten hubs around the state to help green teams build capacity through training, best practices resources and networking. Learn more sustainablejersey.com/get-involved/

Benefits

- Peer mentoring
- Project collaboration
- Online communication platform
- Network of Leaders
- Quarterly Events
- Help Peers Get Certified
- Technical assistance & administrative support from SJ



2023 Certification Cycle & Action Support



2023 Certification Cycle



	FIRST ROUND	SECOND ROUND	THIRD ROUND
Submission Deadline	Feb. 26	May 12	July 27
Return Date	Early-April	Mid-June	Mid-Sep.

- Municipalities can submit for the first time in any round, but it is recommended to submit in the first two rounds to receive feedback to help achieve certification.
- **Expiring Municipalities:** Municipalities certified as part of the 2020 certification cycle that feel this change would impact their 2023 recertification efforts, can request a one-year extension on their certification.
- Informational webinar December 13 at 12:00pm

More information & webinar registration:
sustainablejersey.com/2023-certification-cycle



Actions & Resources



↑ BACK TO TOP

EXPAND ALL



COLLAPSE ALL



Animals in the Community



Arts & Creative Culture



Brownfields



Community Partnership & Outreach



Diversity & Equity



Emergency Management & Resiliency



Energy



Food



Green Design



Health & Wellness



New Actions Implemented in 2022

Category	Action
Diversity & Equity	Community Equity & Diversity Profile
Energy	Energy Assistance Outreach Electric Vehicle Community Outreach
Food	Promoting Safe Food Donation for Food Security
Land Use & Transportation	Community Design for All Ages

2022 Action Updates

Category	Action
Natural Resources	Water Conservation Ordinance
Energy	Energy Efficiency for Municipal Facilities Municipal Onsite Solar System Renewable Government Energy Aggregation Fleet Inventory Make Your Town Electric Vehicle Friendly
Waste Reduction	Reusable Bag Education Program

Actions to be Retired at the end of 2022

Category	Action
Animals in the Community	Companion Animal Pledge Companion Animal Management Plan Enhanced Licensing Compliance Pledge Supporting NJ Wildlife Action Plan
Emergency Management & Resiliency	Climate Adaptation: Flooding Risk Coastal Vulnerability Assessment
Land Use & Transportation	Historic Preservation Master Plan Element
Sustainability & Climate Planning	Community Carbon Footprint Community Visioning

New Actions in Early 2023

Category	Action
Emergency Management & Resiliency	Heat Island Assessment & Mitigation Plan
Operations & Maintenance	Green Grounds Maintenance Policy & Implementation Green Purchasing Policy Green Cleaning Products & Motorized Cleaning Equipment Recycled Copy Paper Recycled Office & Restroom Paper Supplies Recycled Recreation & Transportation Equipment & Materials
Sustainability & Climate Planning	Community Sustainability Plan



Additional Action-related Initiatives

- Community Energy Plan to replace Climate Action Plan
- Wind Ordinance Action update
- Solar Friendly action update
- Commercial Property- Assessed Clean Energy/ C-PACE (*possible*)

Technical Assistance



Technical Assistance Overview

- Health
- Water
- Energy
- Equity
- Complete Streets





Complete Streets Technical Assistance

- 9 communities in 2019
- 8 communities in 2020
- 7 communities in 2022
- <https://www.sustainablejersey.com/grants/complete-streets-technical-assistance/>



Bernards Avenue
Walkable Community Workshop

Borough of Bernardsville, Somerset County, NJ

2019



Pedestrian Safety
Demonstration Project

Borough of Red Bank, Monmouth County, NJ

2019



Bicycle Network Plan

Cranbury Township, Middlesex County, NJ

January 2021



Washington Street, Main Street, and Franklin Avenue
Walkable Community Workshop

Township of West Orange, Essex County, NJ

2020

Sustainable Communities Partnership Program



PSEG Institute
for Sustainability
Studies

**Montclair
State
University**

- Partnership with the PSEG Institute for Sustainability Studies (PSEG ISS) at Montclair State University (MSU).
- Upper-level students commit to approximately 80 - 100 hours of time in the February - April 2023 timeframe to make progress on the action under the guidance of their instructor and an assigned municipal contact.
- Informational webinar to be scheduled in mid-December. Information will be posted on our website and in our bi-weekly Update.

Grants






Photo Credit: Manfred Saul



SUSTAINABLE JERSEY GRANTS PROGRAM



CYCLE SPONSOR	PROJECT TYPE	ELIGIBLE APPLICANTS	GRANT AMOUNTS	CYCLE LAUNCHED	FUNDING TO DATE
 <p>atlantic city electricSM AN EXELON COMPANY</p>	Env. Stew. and Resiliency	Munis in ACE Territory	\$2k, \$5k & \$10k	Late April	\$225,000
 <p>GARDINIER ENVIRONMENTAL FUND</p>	Energy	Public Schools & Munis	\$10k and Larger	TBD	\$1,120,000
 <p>PSEG Foundation</p>	General Sustainability	Public Schools Munis	\$2k & \$10k \$2k, \$10k & \$20k	Mid-Oct Mid-Nov	\$3,100,000



SUSTAINABLE JERSEY

GRANTS PROGRAM



PSEG

Foundation

New Funding Cycle Announced!

- \$200,000 is available to New Jersey municipalities participating in the Sustainable Jersey program
 - \$2k, \$10k and \$20k grants for sustainability projects and green team support

Informational Webinar

1-2pm on Thursday, **December 8, 2022**

Application Deadline

By 11:59pm on Friday, **February 10, 2023**

Award Notifications

By **early April 2023** with an event in **early May 2023**

Performance Period

10k Grants:
18 months
2k Grants:
12 months

Learn More & Apply





Energy

Nancy Quirk
Senior Program Manager



Municipal Energy Actions

	Energy Efficiency	Renewable Energy	Alternative Fuel Vehicles
Municipal Operations	<ul style="list-style-type: none"> • Energy Efficiency for Municipal Facilities • Energy Tracking and Management 	<ul style="list-style-type: none"> • On-Site Geothermal • On-Site Solar +10 pt storage/resilience NEW + 5 pt solar thermal • On-Site Wind • Buy Renewable Energy 	<ul style="list-style-type: none"> • Fleet Inventory • Purchase Alternative Fuel Vehicles • Meet Green Fleet Targets
Community Energy Use	<ul style="list-style-type: none"> • NEW Energy Assistance Outreach • Commercial Energy Efficiency Outreach • Residential Energy Efficiency Outreach 	<ul style="list-style-type: none"> • Make Your Town Solar Friendly • Municipally Supported Community Solar • Solar Outreach • Renewable Government Energy Aggregation (R-GEA) 	<ul style="list-style-type: none"> • Make Your Town Electric Vehicle (EV) Friendly • Public EV Chargers • NEW Electric Vehicle Community Outreach

Energy Assistance Outreach Action

10 points

- Energy assistance resources outreach campaign
 - LIHEAP, Payment Assistance for Gas and Electric (PAGE), etc.
- Meet with local community organizations serving low- and moderate-income residents to:
 - Collaborate on outreach campaign
 - Share energy efficiency incentives available to community organizations

Additional 10 points

- New Jersey Comfort Partners Program outreach campaign
 - Coordinate with Comfort Partners Utility Working Group
 - Resource - Sustainable Jersey Comfort Partners Outreach Toolkit



Volunteer briefed on Comfort Partners talking points at Newark's Lincoln Park Jazz Festival.

EV Community Outreach Action

For 10 points

- Select two audience types to target
 - Residents
 - Commercial fleets
 - Commercial properties
 - Multifamily
 - Workplaces
 - Auto dealerships
- For each selected audience, complete two “Outreach Tasks”
 - Materials - informational webpage, social media posts, brochure, video
 - Events - webinar, in-person training, tabling



Maywood's June 2021
EV awareness event

For additional 5 points

- 2-3 Letters of Certification from target audience members verifying that they are installing EVSE, purchasing an EV, or training staff in EV sales (dealerships)

On-Site Solar Action

- Additional 5 pt for solar thermal system
 - Can reduce water heating costs by 80%
 - More affordable than solar PV
- Can be used in:
 - City Hall
 - Fire Stations
 - Rec Centers
 - Senior Center
 - Homeless Shelters
- “Lead by Example”
 - Multifamily housing
 - Commercial properties



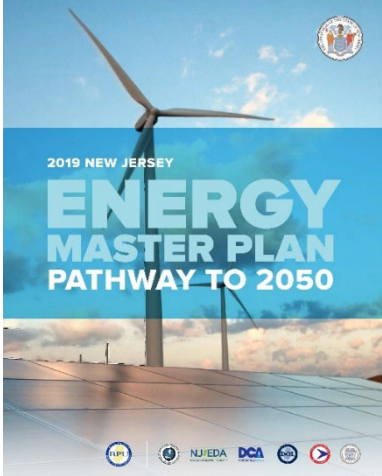
Manchester, NJ solar thermal installation



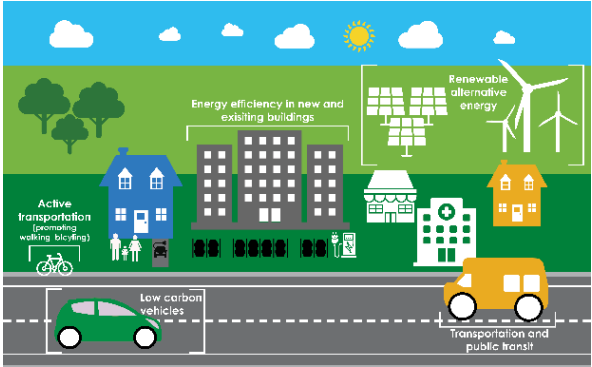
www.ci.minneapolis.mn.us/sustainability/buildings-energy/sustainable-energy/sustainability_firestation1

Solar thermal installation on historic fire house in Minneapolis

Community Energy Planning



Gold Star Standard in Energy



Community Energy Plans

Why do a community energy plan?

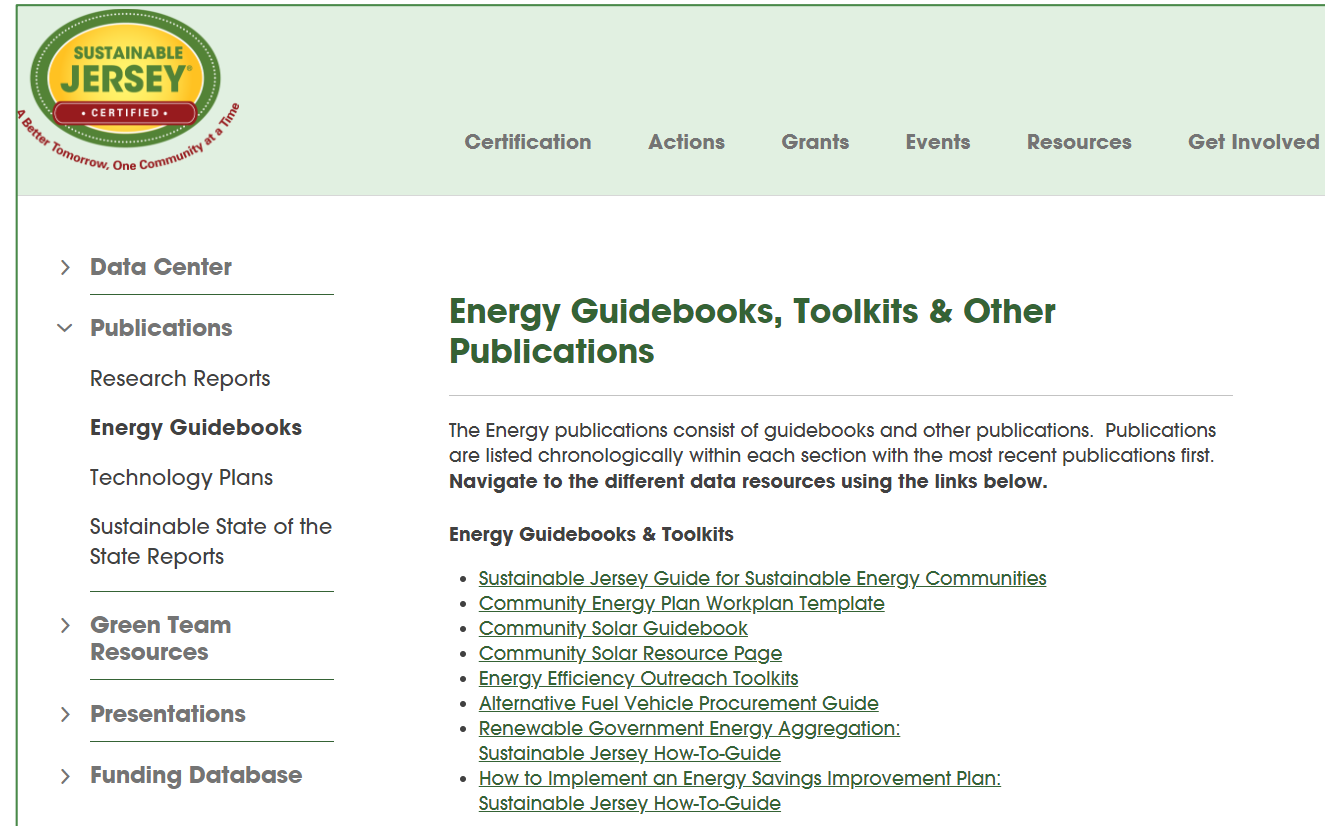
- Improve quality of life
 - Lower utility costs
 - Reduce transportation emissions
 - Create local jobs
- Create a Sustainable Energy Community





Resources for Community Energy Planning

- Sustainable Jersey Data Center
- Sustainable Energy Communities Guide
- Community Energy Plan Workplan Template
- Community Energy Plan Guide



The screenshot shows the Sustainable Jersey website's resources page. At the top left is the Sustainable Jersey Certified logo. A navigation bar contains links for Certification, Actions, Grants, Events, Resources, and Get Involved. A left sidebar menu lists: Data Center, Publications (with a dropdown arrow), Green Team Resources, Presentations, and Funding Database. The main content area is titled "Energy Guidebooks, Toolkits & Other Publications". Below the title, it states: "The Energy publications consist of guidebooks and other publications. Publications are listed chronologically within each section with the most recent publications first. **Navigate to the different data resources using the links below.**" Under the heading "Energy Guidebooks & Toolkits", there is a list of links: Sustainable Jersey Guide for Sustainable Energy Communities, Community Energy Plan Workplan Template, Community Solar Guidebook, Community Solar Resource Page, Energy Efficiency Outreach Toolkits, Alternative Fuel Vehicle Procurement Guide, Renewable Government Energy Aggregation: Sustainable Jersey How-To-Guide, and How to Implement an Energy Savings Improvement Plan: Sustainable Jersey How-To-Guide.

sustainablejersey.com/resources/publications/energy-guidebooks/



sustainablejersey.com/resources/data-center/

Certification

Actions

Grants

Events

Resources

Get It

∨ Data Center

Sustainable Jersey
Data Resources

State Data Resources

> Publications

> Green Team
Resources

> Presentations

> Funding Database

Sustainable Jersey Data Resources

The following resources are data files and interactive maps that Sustainable Jersey processes and prepares. **Navigate to the different data resources using the links below.**

Municipal Data

- [Community Profile Data by Municipality](#)
- [Aggregated Community-Scale Utility Energy Data](#)
- [Vehicle Miles Traveled \(VMT\)/On-Road Vehicle GHG Emissions Data](#)
- [Community-Scale Greenhouse Gas \(GHG\) Emissions Data](#)
- [Electric Vehicle \(EV\) Ownership Data](#)
- [Solar Installation Data](#)
- [Energy Efficiency Program Participation \(2008-2021\)](#)
- [NJCEP Local Government Projects 2008-2021](#)

Community-Scale Greenhouse Gas (GHG) Emissions - Metric Ton Carbon Dioxide Equivalent (MTCO2e) June 2022

Data Acronyms: CWC - Combined with Commercial NDA - No Data Available

Highlighted Data: Data + CWC Data + NDA

* Further information on Notes Sheets

Municipality	County	Year	Residential Electricity	Commercial Electricity	Industrial Electricity	Street Lighting Electricity	Residential Natural Gas	Commercial Natural Gas	Industrial Natural Gas	Street Lighting Natural Gas	Other Heating Fuels	On-Road Vehicles	Total MTCO2e
Aberdeen township	Monmouth	2015	21,189	11,212	558	274	28,223	6,850	CWC	NDA	1,516	49,605	119,427
Absecon city	Atlantic	2015	16,368	19,364	NDA	168	8,840	18,884	NDA	NDA	1,247	164,679	229,551
Alexandria township	Hunterdon	2015	8,587	2,181	7	9	NDA	NDA	NDA	NDA	10,782	19,086	40,652
Allamuchy township	Warren	2015	7,507	2,488	318	59	7,584	262	NDA	NDA	2,955	18,071	39,244
Allendale borough	Bergen	2015	10,265	10,624	NDA	NDA	19,302	6,786	210	NDA	764	27,772	75,725
Allenhurst borough	Monmouth	2015	1,784	1,972	7	33	3,038	465	CWC	NDA	111	1,488	8,898
Allentown borough	Monmouth	2015	2,467	1,939	83	78	3,099	1,412	34	NDA	728	4,314	14,155
Alloway township	Salem	2015	4,661	1,214	NDA	27	944	NDA	NDA	NDA	9,975	9,783	26,604
Alpha borough	Warren	2015	3,004	6,187	749	18	1,971	1,338	NDA	NDA	2,827	10,647	26,741
Alpine borough	Bergen	2015	7,594	NDA	NDA	NDA	12,648	779	NDA	NDA	75	6,379	27,474
Andover borough	Sussex	2015	1,115	962	26	14							
Andover township	Sussex	2015	9,698	4,870	324	19							
Asbury Park city	Monmouth	2015	12,881	21,040	1,107	47							
Atlantic City city	Atlantic	2015	32,046	291,291	14	2,6							
Atlantic Highlands boro	Monmouth	2015	6,909	4,039	42	11							
Audubon borough	Camden	2015	10,740	8,843	41	14							
Audubon Park borough	Camden	2015	NDA	NDA	NDA	1							
Avalon borough	Cape May	2015	16,437	5,773	NDA	13							
Avon-by-the-Sea boroug	Monmouth	2015	3,306	1,203	53	33							
Barnegat Light borough	Ocean	2015	NDA	NDA	NDA	ND							
Barnegat township	Ocean	2015	35,803	10,821	173	40							
Barrington borough	Camden	2015	8,433	7,434	77	15							
Bass River township	Burlington	2015	2,412	1,297	1,817	23							
Bay Head borough	Ocean	2015	3,372	1,212	2,040	8							
Bayonne city	Hudson	2015	52,156	58,008	11,571	1,6							
Beach Haven borough	Ocean	2015	19,804	6,017	11	10							
Beachwood borough	Ocean	2015	13,805	2,553	81	51							
Bedminster township	Somerset	2015	12,868	30,782	174	19							
Belleville township	Essex	2015	30,925	27,496	1,913	73							

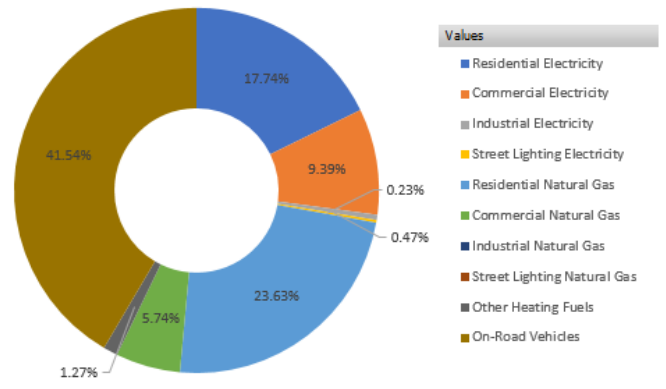
Municipality	Aberdeen township, Monmouth County
2015 MTCO2e by sector	
Residential Electricity	21,189
Commercial Electricity	11,212
Industrial Electricity	558
Street Lighting Electricity	274
Residential Natural Gas	28,223
Commercial Natural Gas	6,850
Industrial Natural Gas	0
Street Lighting Natural Gas	0
Other Heating Fuels	1,516
On-Road Vehicles	49,605

--- Select municipality here

Municipality: Aberdeen township, Monmouth County

Residential... Commer... Industri... Street... Residential... Commerci... Industrial... Street... Other... On...

Overall 2015 GHG Emissions MT CO2e (By Sector and Energy Type)





Nancy Quirk

Senior Energy Program Manager

quirkn@tcnj.edu

609.771.2902

Technical Assistance for Energy Initiatives

- Review current energy use
 - Utility billing data
 - Energy tracking
- Apply for utility and NJCEP incentives
- Fleet Inventory and Analysis/EV Adoption
- Submit for SJ certification points
- Community Energy Planning



SJ-PSE&G Partnership Program



Three tracks

- Technical Assistance (TA)
- Residential Energy Efficiency Outreach Campaign
- Commercial Energy Efficiency Outreach Campaign

Customized Outreach tools

- Video
- Outreach campaign website
- PSE&G giveaways

- Robust TA and implementation support for upgrading municipal buildings
- Technical and financial support for community outreach campaigns
- Sustainable Jersey points

[Sign up today at Booth # 103](#)

New Jersey Community Solar Project Finder

- Allows customers to search by zip code for projects serving their municipality
- Allows subscriber organizations to list and update community solar projects
- Provides overview and FAQs of community solar

Anticipated Launch in January 2023!

New Jersey Community Solar Project Finder

Enter your zip code to see a list of community solar projects that are available in your municipality.


Some zip codes may not overlap perfectly with municipal boundaries. Community solar project sign-ups are by municipality, please check the chart to verify your eligibility.

Community solar subscribers can only subscribe to a project located in their electric utility service territory.


Enter your zip code to see projects serving your community

Not sure what some of the terms included in the chart below mean? See the [glossary of common community solar terms](#).

Project Name Subscriber Organization Developer Project Description	Link to Project Website	Date Project Operational	Eligibility Requirements	Estimated Percent Customer Savings*	Subscription Contract Terms	Electric Utility Service Territory	Municipalities Served by Project
Emerald City Solar Subscriber Organization: Subscibex LLC	Click here for more information and sign up.	projected to be operational 02/25/2023	Credit check required? NO Automated payment required (credit/debit card)? YES	All customers 20% LMI customers 25%	Subscription contract length: 1 year Deposit or subscription fee: None	Atlantic City Electric	Emerald City, West Emerald City



New Jersey Community Solar Project Finder




Enter your zip code to see a list of community solar projects that are available to residents in your zip code.

Find Community Solar Projects Near You
Community Solar FAQ and Glossary

What is Community Solar?

Community solar is for anyone who wants to benefit from solar energy generation without installing panels directly on their roofs. This is an ideal opportunity for renters, homeowners with shaded roofs, or anyone else that is unable to install their own solar array on their property to participate and benefit from the generation of renewable energy.

A community solar project is a solar array whose energy generation is financially divided among multiple participating subscribers. As a subscriber, you will receive a financial credit on your utility bill for the portion of power generated by the array on your behalf. Separately, you will be responsible for paying a subscription fee to the community solar project. Community solar projects are designed so that your utility bill credit is larger than the subscription fee, meaning that you save money!





Resiliency

Anne Heasley
Program Manager





Climate Adaptation and Resilience

Pursuant 2021 amendment to New Jersey's Municipal Land Use Law, Sustainable Jersey:

- Retired two actions in 2022
 - Climate Adaptation: Flood Risk
 - Coastal Vulnerability Assessment
- Updated 10 actions with new climate-focused resources
- Released new interim climate resilience planning guidance titled “Sustainability and Resiliency”
- Working closely with partners to develop more comprehensive local climate resilience planning guidance
- Developing Gold Star in Resilience

Sustainability and Resiliency: Guidance on Creating Climate-Ready Communities



PREFACE

This guide presents 10 strategies that municipalities can implement to foster climate-resilient communities. These strategies are Sustainable Jersey “actions” that score points in the [municipal certification program](#). These actions make sense to implement now - and will still be relevant in the future as a new, more comprehensive climate resilience framework is being developed by the New Jersey Department of Environmental Protection. This guide goes beyond the traditional reactive mindset in emergency management and encourages municipalities to prepare for the worst of climate change impacts and adapt as seen necessary by the community as a whole.

Sustainable Jersey has numerous Emergency Management & Resiliency actions to help municipalities prepare for and respond to climate change. They address a variety of climate hazards, including sea level rise, increased precipitation, and extreme heat. These impacts damage infrastructure, overwhelm utility systems, and disrupt vital ecological and agricultural processes, which, as they progress in severity, will only increasingly impact New Jerseyans' everyday lives. Thus, communities are turning to these actions - now more than ever - as climate change progresses in the Garden State and around the world.

Municipalities stand at the forefront of climate change adaptation. New Jersey's Home Rule Act (1917) grants municipal governments authority to enact ordinances and regulations to promote and improve environmental public health. Municipalities are in charge of land use practices, stormwater management, and energy. They also possess the ability to address social inequality and create mechanisms that foster equitable and resilient communities.

CLIMATE CHANGE POLICY ENVIRONMENT IN NEW JERSEY

In 2020, Governor Phil Murphy signed Executive Order No. 100 asking the New Jersey Department of Environmental Protection (NJDEP) to begin a regulatory reform effort to help reduce greenhouse gas and other climate pollutant emissions while making the natural and built environments more resilient to the impacts of climate change.

On February 4, 2021, Governor Murphy signed into law PL. 2021, c6, amending the [Municipal Land Use Law](#), to require municipalities to incorporate a climate change-related hazard vulnerability assessment into any Master Plan Land Use Element. These assessments will need to analyze current and future threats associated with climate change-related natural hazards, including increased temperatures, drought, flooding, hurricanes and sea-level rise.



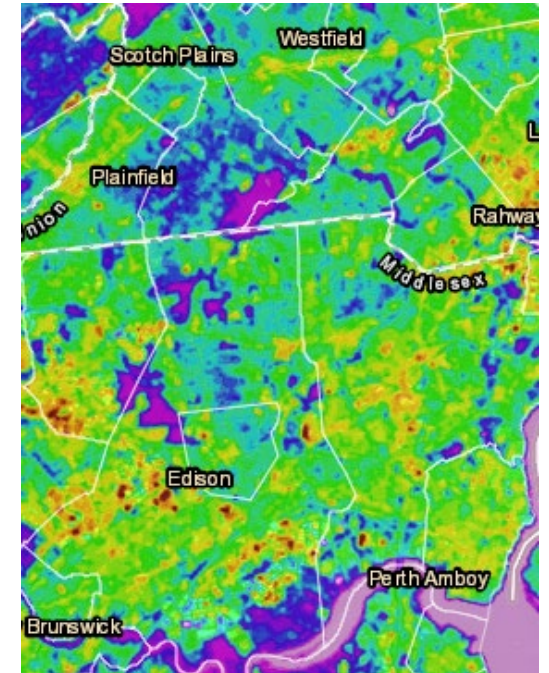
Climate Adaptation and Resilience

Heat Island Assessment and Mitigation Plan updates

- Update Sustainable Jersey Heat Map with July 2022 ortho-imagery
- Tiered point system - allows a municipality to still obtain 10 points the previously received for doing assessment and mitigation plan:
 - Tier 1: Complete Assessment
 - Tier 2: Mitigation Plan
 - Tier 3: Implement one strategy from action plan, extra points if it relates to vulnerable population
- New climate change-focused resources



5 to 20 Points





Equity

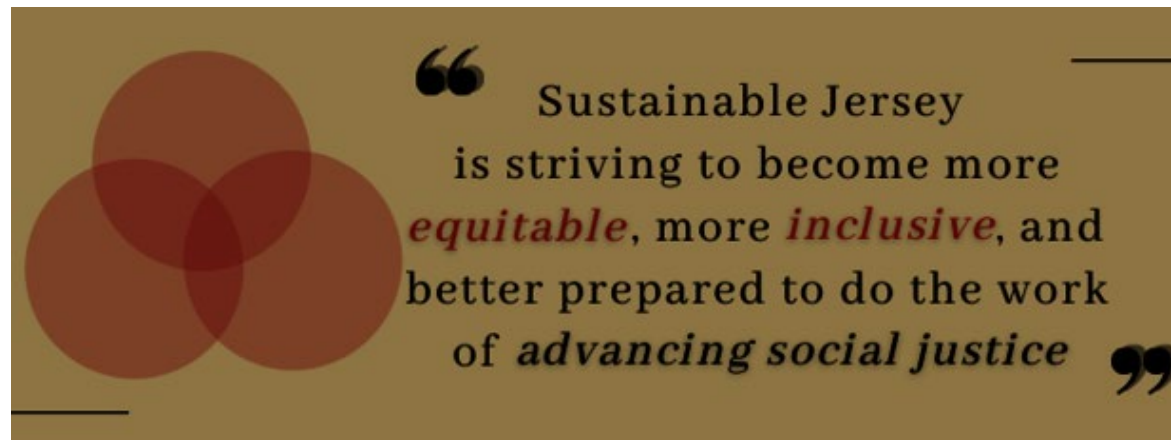
Melanie McDermott
Senior Researcher





Sustainable Jersey's Commitments to Advance Equity:

- Increase diversity among Board, staff & volunteers
- Develop actions to advance social equity & inclusion
- Provide training & support to municipalities to advance equity





New: Community Equity Profile

1. Describe diversity of community with demographic data;
2. Describe neighborhood diversity with maps;
3. Identify vulnerable social groups;
4. Identify communications barriers, preferences & networks;
5. Report findings to municipal government.

Action under development: **Municipal Action to Advance Equity**



FREE TECHNICAL ASSISTANCE FOR ADVANCING EQUITY IN YOUR MUNICIPALITY



APPLICATION DEADLINE: NOV. 11, 2022

bit.ly/2022EquityTA



■ One selected pilot municipality

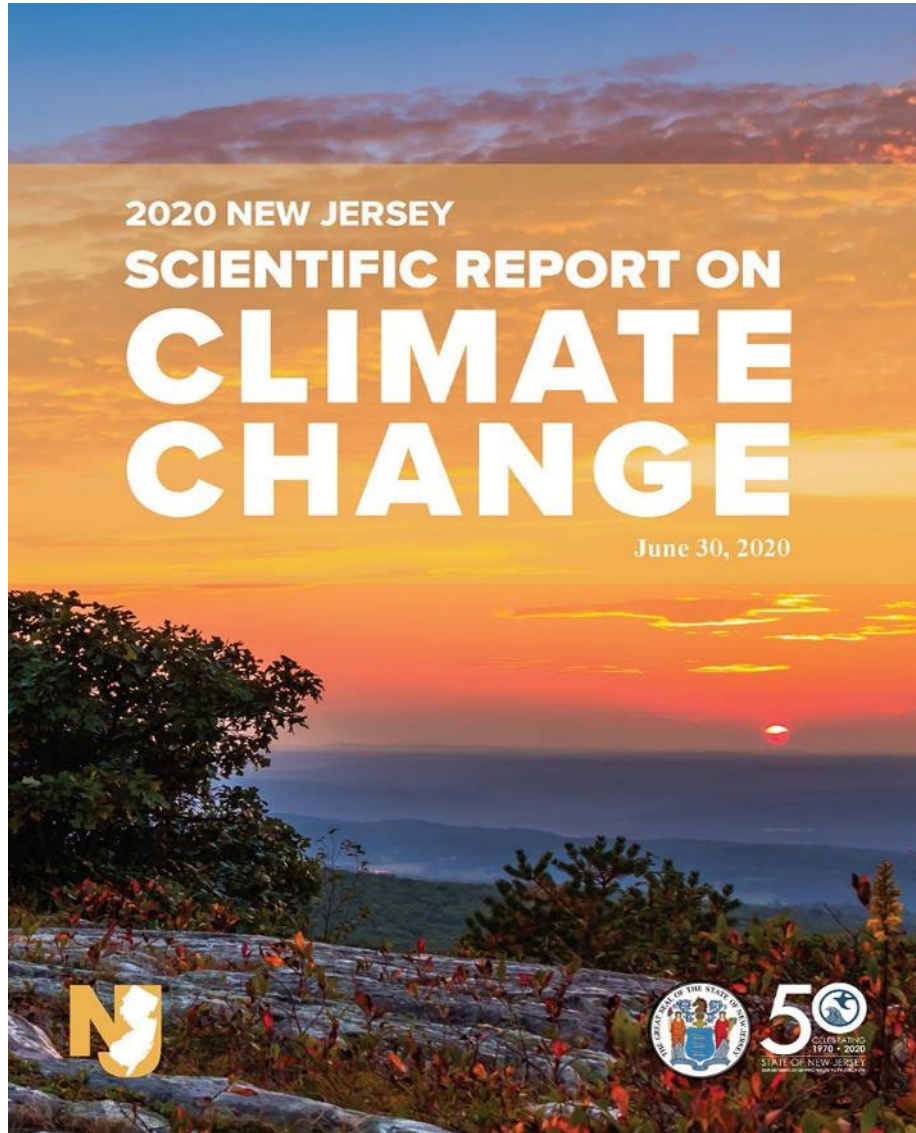
- Professional coach & Sustainable Jersey staff assist with:
 - Training
 - Equity profile action
 - Action or initiative using equity best practices to address local priorities



Municipal and School Collaborations

Renee Haider
Deputy Director

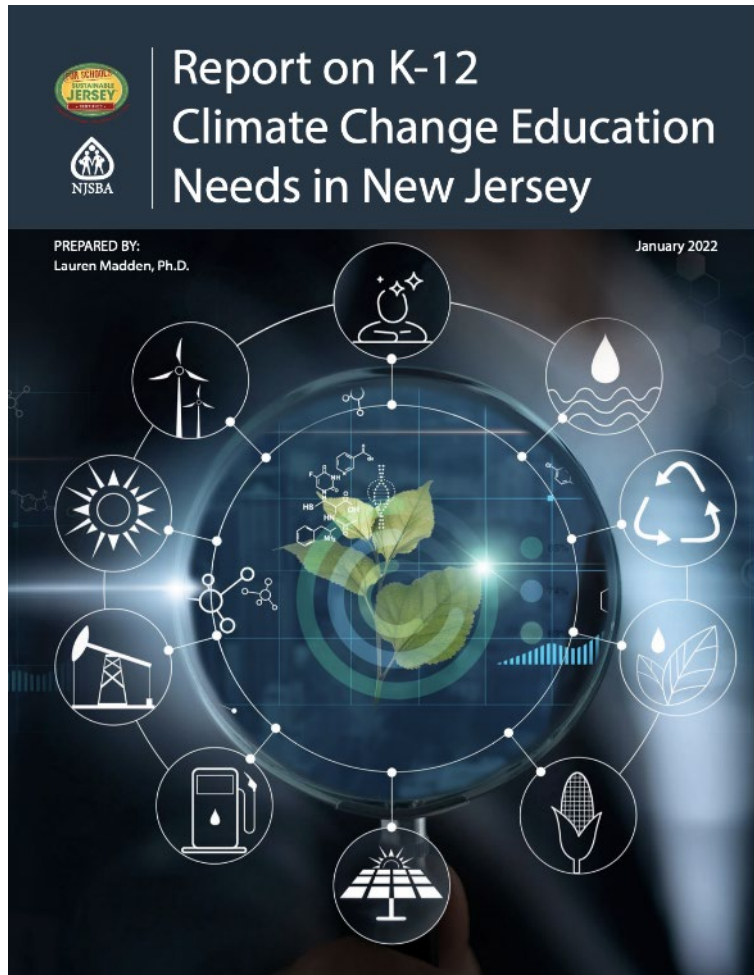




“If just 16% of high school students in middle- and high-income countries were educated about climate change, there would be a tremendous reduction of carbon emissions (nearly 20 gigatons) by 2050. Through education, not simply about climate change itself, but the “green skills” and habits of mind needed to address the effects of climate change, more sustainable future becomes possible.”

Kwauk and Wintrop (2021)

Community-Based Climate Change Education Critical



- Center climate change education and experiences on what is happening locally.
- New Jersey-specific effects of climate change and the local actions are more likely to make a lasting impact on students and motivate communities to commit to solution-building.

Collaborators



- Municipal Boards & Commissions
- Non-Profits
- State Agencies (DEP, DOT, BPU)
- Colleges & Universities
- Residents & Businesses



Cooperative Extension

RCE County Office Operating Status »



STUDENT CLIMATE CHALLENGE

- Students in grades 6 – 12
- Teams of 2 – 12 students
- Complete a School or Community Project Addressing the Human Causes or Environmental Impacts of Climate Change
- Produce a Digital Story Video



School finalists awarded grants ranging from \$2,500 to \$500



STUDENT CLIMATE CHALLENGE

Timeline

- Teacher Registration Open Now
- March 31 –Submissions are Due
- Early May – Finalists Announced
- Early June – Awards Ceremony hosted by First Lady Tammy Murphy



The Drumthwacket Foundation



Tree-Planting Grants for Schools, Colleges, and Universities



NJ Department of Environmental Protection partnering with Sustainable Jersey to provide grants to public schools (K-12), colleges & universities for planting trees (planning & implementation)

Beneficial outcomes:

- Provide shade and habitat on school grounds
- Combat climate change
- Serve as a teaching tool and positive example





Upcoming events



SJ-PSE&G Energy Efficiency Program: Information Session for Municipalities

December 7, 1:00pm – 2:30pm

2023 Sustainable Jersey Grants Cycle Funded by the PSEG Foundation Webinar

December 8, 1:00pm – 2:00pm

2023 Certification Webinar

December 13, 12:00pm – 1:30pm

Save the Date! 2023 New Jersey Sustainability Summit

May 5, 9:00am – 4:00pm



Sustainable Jersey NJLM Sessions

Wednesday 11/16

Community Energy Planning

10:45 AM – 12:00 PM, ROOM 421

Set a Sustainable Path Towards Improving Your Community's Health

2:00 PM – 3:15 PM, ROOM 420

Funding Electric Vehicle Initiatives

3:45 PM – 5:00 PM, ROOM 421

Thursday 11/17

Food Waste & Recovery: State & Local Progress

9:00 AM – 10:15 AM, ROOM 420

Funding & Technical Assistance for Brownfields Redevelopment

10:45 AM – 12:00 PM, ROOM 421

Climate Ready Communities

2:00 PM – 3:15 PM, ROOM 420



Thank You!

- Stay updated on grants, technical assistance, events and program updates by joining our mailing list
- Questions? Visit our website sustainablejersey.com or contact us at info@sustainablejersey.com or 609-771-2938



Scan QR Code to
sign up for our
mailing list

Sustainable Jersey Underwriters and Sponsors

Program Underwriters



Grant Program Underwriters



Corporate Sponsors



The logo is centered on a green background with decorative circular patterns in the corners. It features a yellow oval with a green dotted border. Inside the oval, the text "SUSTAINABLE JERSEY" is written in green, with "SUSTAINABLE" in a smaller font above "JERSEY". A red pill-shaped banner at the bottom of the oval contains the word "CERTIFIED" in white, flanked by two white dots.

**SUSTAINABLE
JERSEY[®]**

• CERTIFIED •