



Sustainable Jersey Session #7

State Plan & Sustainable Jersey - Good Planning Together





Overview of Sustainable Jersey

- Free sustainability certification program for New Jersey municipalities

- **Our vision:** achieve a sustainable New Jersey, one community at a time

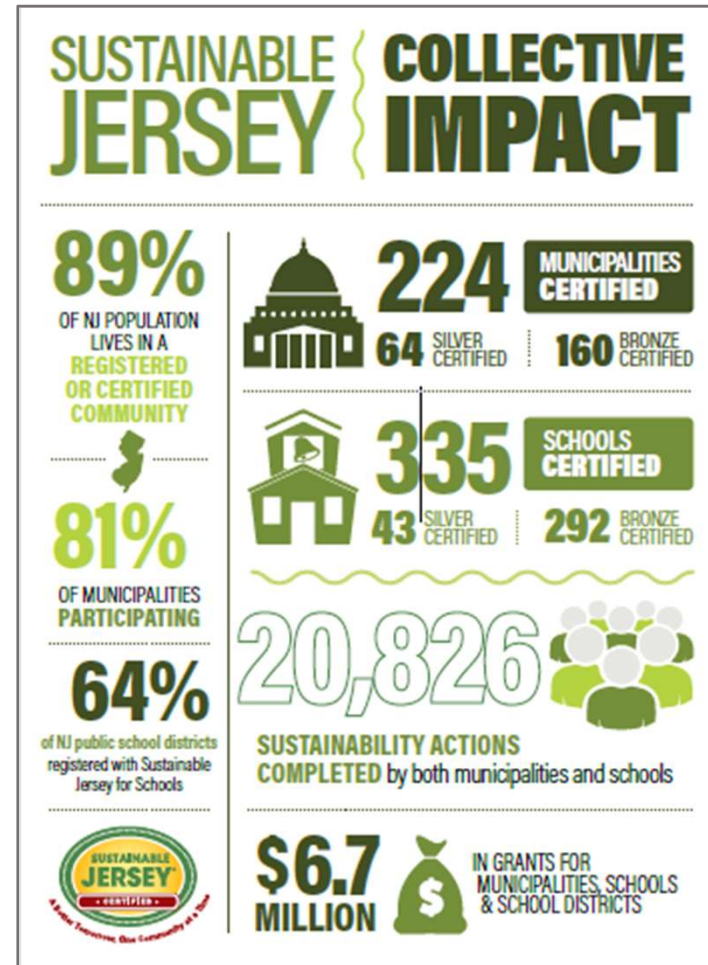
- **Our mission:** empower New Jersey communities to build a better world for future generations with the tools, training and financial incentives necessary to pursue critical sustainability initiatives





A Framework for Action

- Coordinates priorities, resources, and policy among public and private state and local actors
- Develops **tools, resources,** and **guidance** to make progress
- Provides access to **grants** and **assistance**
- **Recognizes** accomplishments





Program Participants



Municipal Program

463 Participating

- 81% of NJ municipalities
- 210 Certified
 - 151 Bronze
 - 59 Silver
 - 1 Energy Gold Star (Woodbridge)



Sustainable Jersey Actions



- Action purpose and points
- Why is it important?
- Who should be involved?
- How long will it take and what will it cost?
- What to do and how to do it?
- What to submit
- Spotlights
- Resources





Good Planning

Animals in the Community	▼
Arts & Creative Culture	▼
Brownfields	▼
Community Partnership & Outreach	▼
Diversity & Equity	▼
Emergency Management & Resiliency	▼
Energy	▼
Food	▼
Green Design	▼
Health & Wellness	▼
Innovative Projects	▼
Land Use & Transportation	▼
Local Economies	▼
Natural Resources	▼
Operations & Maintenance	▼
Public Information & Engagement	▼
Sustainability & Climate Planning	▼
Waste Management	▼

Actions to consider:

- Community Partnership & Outreach
 - Create a Green Team
- Land Use & Transportation
 - Historic Preservation Element; Sustainable Land Use Pledge; Green Development Checklist; Enhanced Stormwater Management Control Ordinance
- Natural Resources
 - Open Space Plan; Environmental Assessment Ordinance; Site Plan Review



Municipal Dashboard

> **Action Development**

Priority & Prerequisite Actions

2021 Certification Cycle

∨ **Gold Star Standards**

Energy Gold

Health Gold

Water Gold

Program Updates

Search Participating Municipalities & Approved Actions

Resources

Gold Star Standards

All certified municipalities are eligible to earn Gold Star recognition for reaching high levels of achievement in key dimensions of sustainability. Gold Star Standards establish the specific actions and levels of performance that support what we need to achieve as individual communities and as a state, as defined in the [2015 Sustainable State of the State Report](#). The award of a Gold Star indicates that a municipality is making an effective, fair and timely contribution to the collective achievement of our sustainability goals.



Gold Stars are awarded for individual dimensions. Gold Star Standards in [Energy](#), [Health](#) and [Water](#).

↑ BACK TO TOP EXPAND ALL COLLAPSE ALL 	
Energy	<p><u>Community-Wide Emissions</u></p> <p>▲ Required</p>
Health	<p><u>Municipal Operations</u></p> <p>▲ Required</p>
Water	



Emergency Management & Resilience



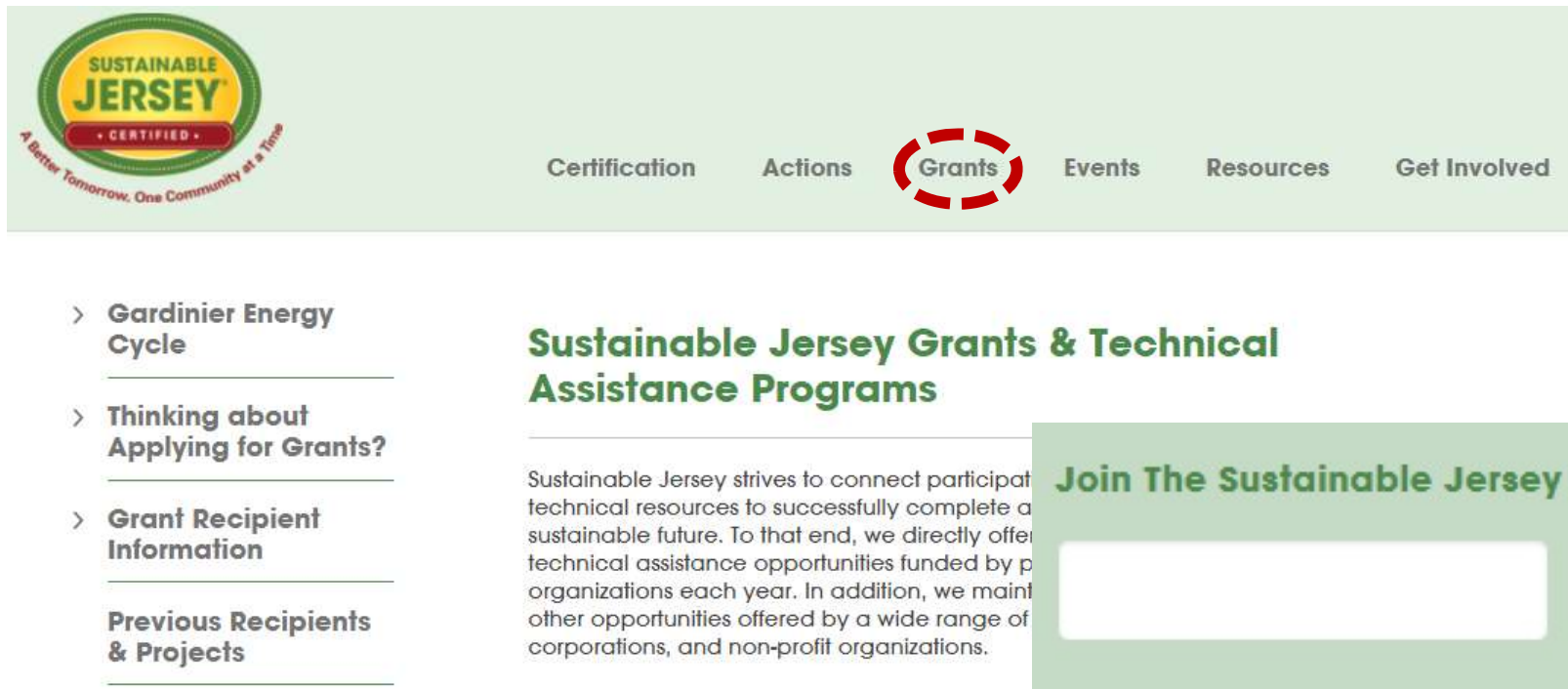
- **Coastal Vulnerability Assessment (CVA)**
- **Climate Adaption: Flood Risk**
- **Heat Island Assessment**
- **Extreme Temperature Event Plan and**
- **Vulnerable Populations Identification for Emergencies**

Thursday, Sept. 2: Highway 440 flooded in Jersey City of New Jersey as hundreds of cars stuck in water as Hurricane Ida left behind flash floods east coast.
Tayfun Coskun/Anadolu Agency via Getty Images

Sustainable Jersey Grants Program



- View available opportunities via the Grants tab on our websites and sign up for our newsletters to stay informed bit.ly/SJgrants



The screenshot shows the Sustainable Jersey website's navigation menu with "Grants" highlighted. Below the menu, there are four main sections: "Gardinier Energy Cycle", "Thinking about Applying for Grants?", "Grant Recipient Information", and "Previous Recipients & Projects". The "Sustainable Jersey Grants & Technical Assistance Programs" section is expanded, showing a paragraph about the program's goals and a "Join The Sustainable Jersey Mailing List" form with a "Join" button.

Sustainable Jersey Grants & Technical Assistance Programs

Sustainable Jersey strives to connect participants with technical resources to successfully complete a sustainable future. To that end, we directly offer technical assistance opportunities funded by partner organizations each year. In addition, we maintain other opportunities offered by a wide range of corporations, and non-profit organizations.

Join The Sustainable Jersey Mailing List

Join

Sustainable Jersey Grants Program



**2022 Cycle: Announced on
Tuesday!**

- 20k, 10k, and 2k grants available
- Can be used for any Sustainable Jersey action-related project
- Funding Dispersed in early May

Sustainable Jersey Grants Program



An Exelon Company

Sustainable
Communities Grant
Program



ENVIRONMENTAL
DEFENSE FUND®

Finding the ways that work

EDF Climate
Corps Program



NJTPA

Complete Streets
Technical Assistance
Program



Complete Streets Technical Assistance Program - Round 3

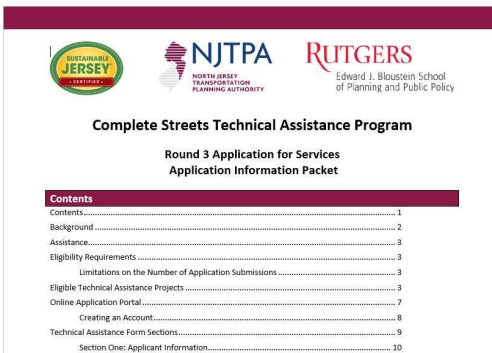
APPLICATIONS AVAILABLE: DECEMBER 6, 2021

APPLICATIONS DUE: FEBRUARY 11, 2022

Two Webinars:



Project Types Webinar
Thursday, December 9, 2021
noon - 1:00pm



Application Process Webinar
Wednesday, December 15, 2021
noon – 1:00pm



State Planning Commission/ Office of Planning Advocacy

Department of State

Tahesha Way, Secretary

NJ Business Action Center

Melanie Willoughby, Executive Director

NJ Office of Planning Advocacy

Donna Rendeiro, Executive Director

Meghan E. Wren, AICP

Area Planner

Meghan.Wren@sos.nj.gov

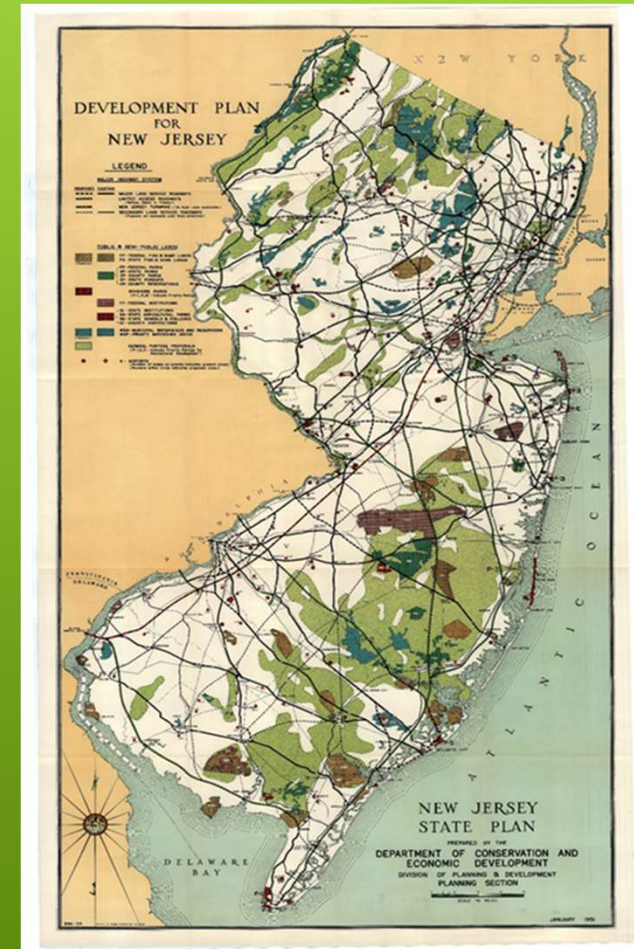
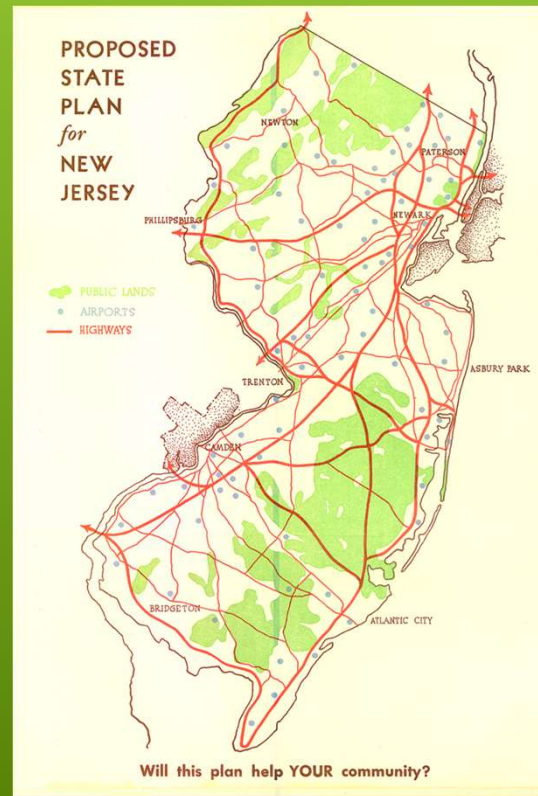
609.381.7452



NJBAC
New Jersey Business Action Center

Foundations of Planning in New Jersey

NJ has a long history of state planning – the first NJ State Plan dates back to 1934.

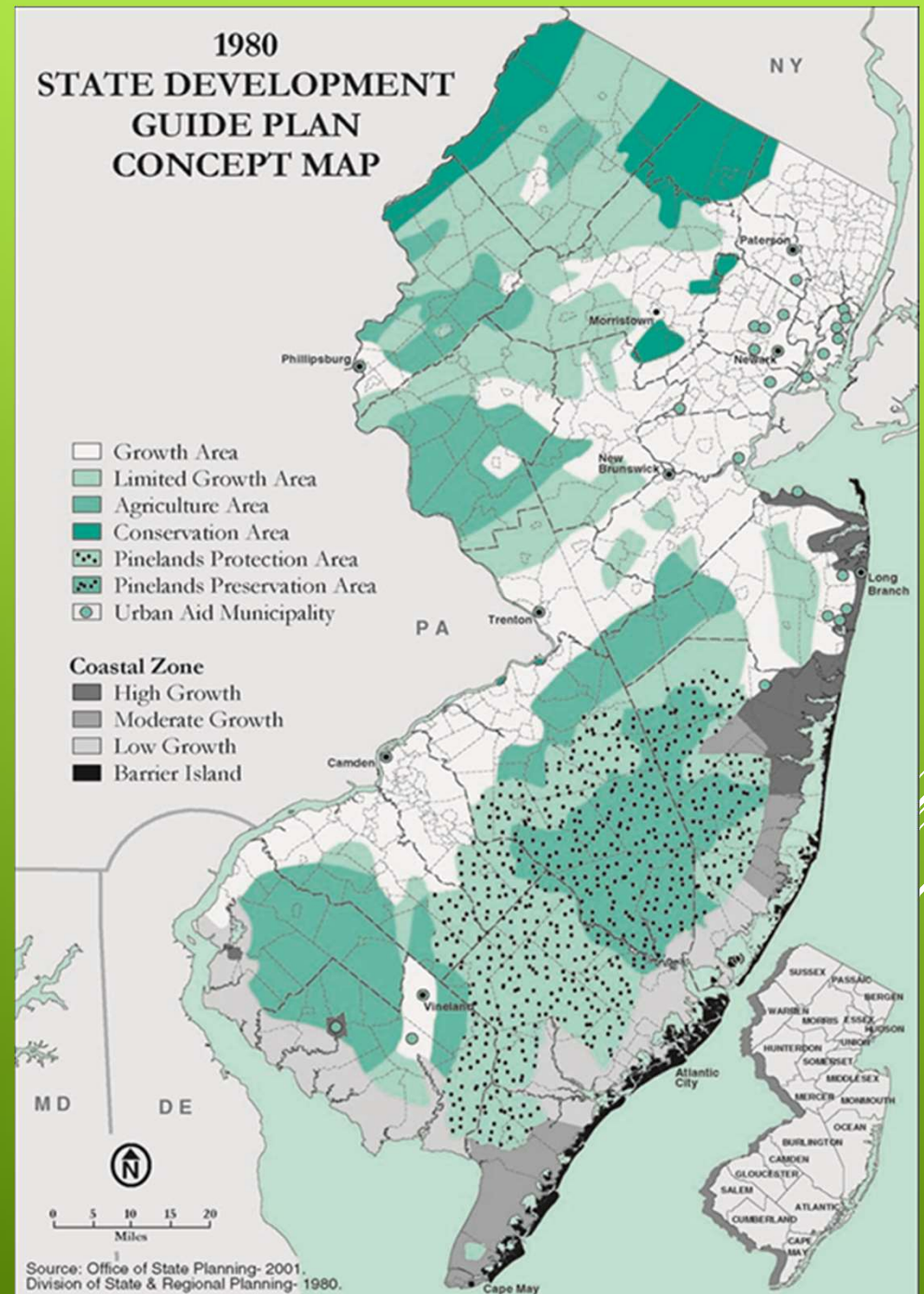


The State Planning Act

In 1985, in response to the Mount Laurel II ruling, NJ enacted the *State Planning Act (SPA)* (N.J.S.A. 52:18A-196).

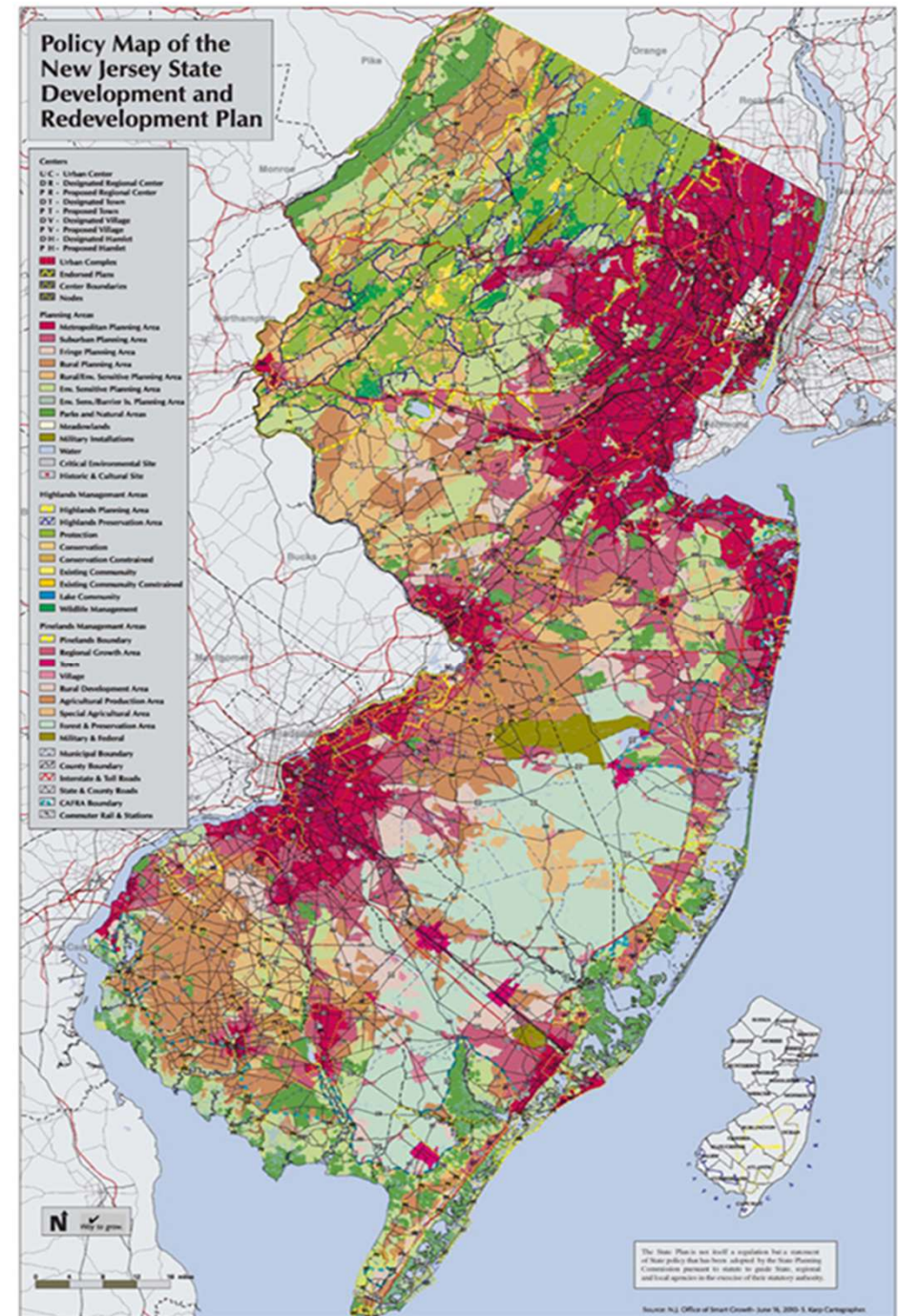
Along with the Fair Share Housing Act, the SPA was meant to strengthen the 1980 State Development Guide Plan with a more comprehensive State Plan, or State Development & Redevelopment Plan (SDRP)

“designed for use as a tool for assessing suitable locations for infrastructure, housing, economic growth and conservation.



State Planning Act (SPA)

- Guided preparation of a State Plan the State Development and Redevelopment Plan (SDRP), first one adopted in 1992;
- Created a collaborative process for adopting the Plan known as – “Cross Acceptance”; and
- Called for greater coordination among state agencies, local and regional governments to ensure “sound and integrated” planning.
- Established the State Planning Commission (SPC) and an Office of State Planning to provide staff support to the SPC.



The State Planning Act also established the State Planning Commission (SPC)

The SPC's primary function is to prepare, adopt, maintain, and update the State Plan, among other specific functions found at NJSA 52: 18A-199.

17 member board including:

- 6 public members
- 4 representatives from municipal and county government
- State Treasurer (now Secretary of State)
- 4 other cabinet members appointed by the Governor
- 2 members of the executive branch also appointed by the Governor

The Plan Implementation Committee (PIC) is the SPC's working sub-committee. The SPC and the PIC meet monthly.

State Planning Commission

Public Members

- Thomas Wright, *Chair*, President & CEO of Regional Plan Association
- Edward J. McKenna, Jr., *Vice Chair, Principal*, McKenna, Dupont, Stone & Washburne
- Elizabeth Terenik, PP, AICP, Atlantic City Development Corporation
- Stephen Santola, *Executive Vice President/General Counsel*, Woodmont Properties/Woodmont Industrial Properties
- *Additional Representative Pending Appointment*
- *Additional Representative Pending Appointment*

County/Local Government Representatives

- Bruce Harris, Chatham Borough
- Shanel Y. Robinson, County Commissioner Director, Somerset County
- *Additional Representative Pending Appointment*
- *Additional Representative Pending Appointment*

State Agencies

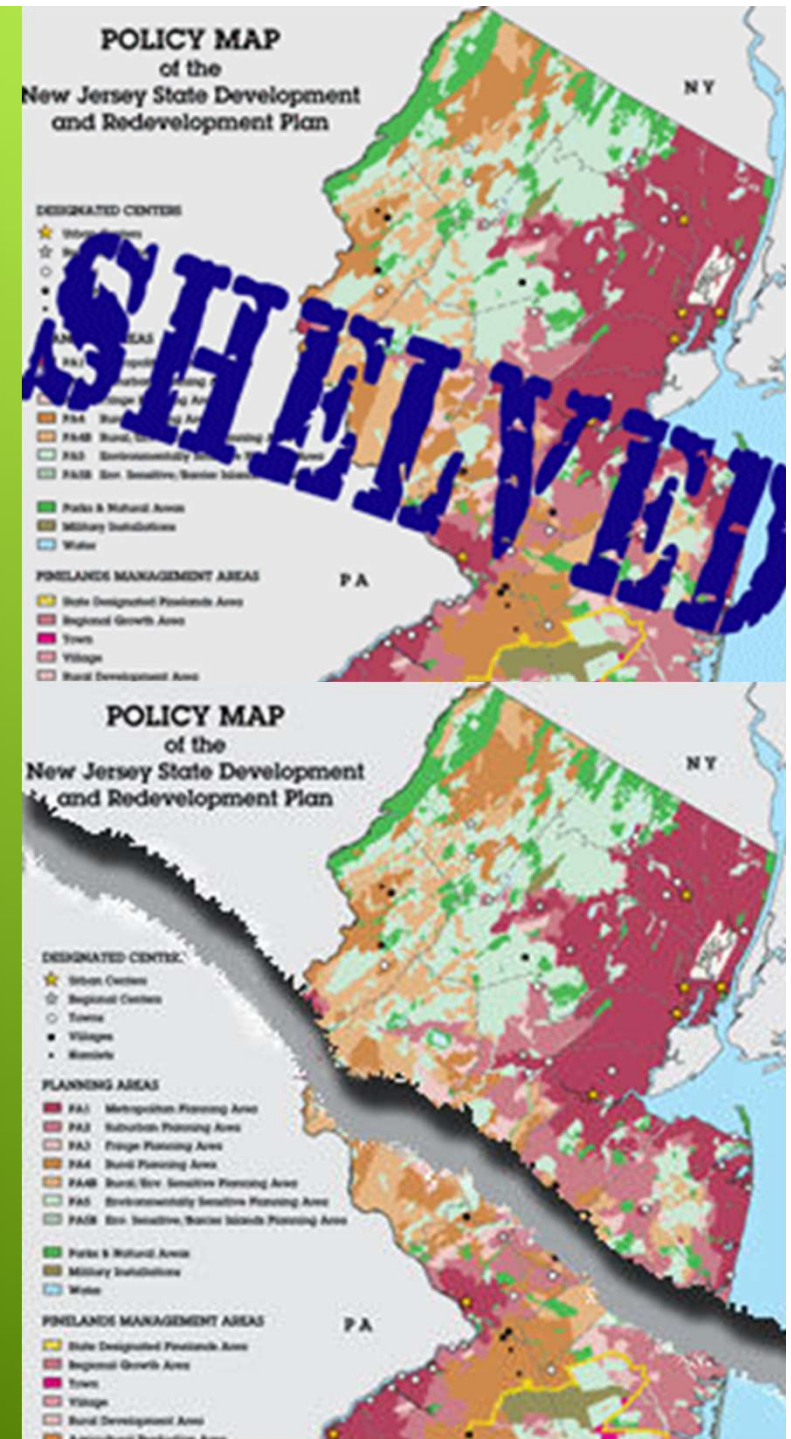
- Joseph Fiordaliso, President, Board of Public Utilities
- Diane Scaccetti Gutierrez, Commissioner, NJ Department of Transportation
- Shawn M. LaTourette, Commissioner, NJ Department of Environmental Protection
- Sheila Oliver, Lieutenant Governor, Commissioner, NJ Department of Community Affairs
- Tahesha Way, Secretary of State, NJ Department of State

Executive Branch Representatives

- Danielle Esser, Director of Governance and Strategic Initiatives, Economic Development Authority
- Douglas H. Fisher, Secretary of Agriculture, NJ Department of Agriculture

The State Plan

- The State Plan was last amended and re-adopted in 2001.
- The 2001 State Plan establishes a broad policy framework of how anticipated growth can best be accommodated in a more sustainable manner necessary for maintaining and revitalizing livable communities in the nation's most densely populated state.
- The SPC initiated, in 2003, a State Plan update; and after a prolonged cross-acceptance process, released a "Draft Final State Plan" in January 2007 that was not adopted.
- The SPC released, in 2011, an updated State Plan labeled State Strategic Plan, which was slightly modified and again released in 2012, but never adopted.
- As such, the 2001 State Plan remains in effect.



The 2001 State Plan

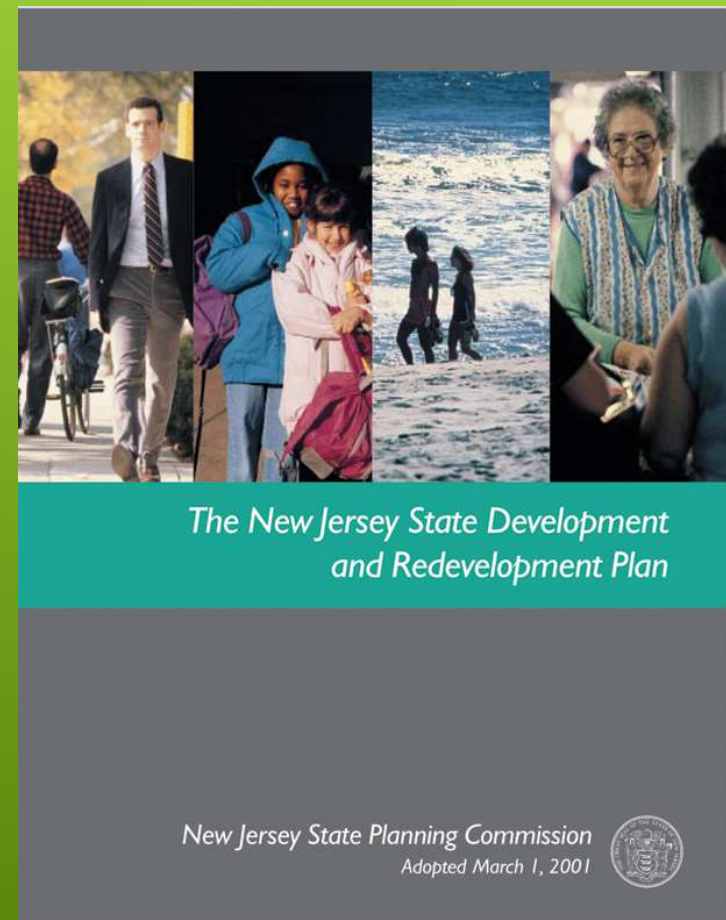
Maps a path to sustainable development and redevelopment in New Jersey; focusing growth into compact, mixed-use communities that offer an array of housing, shopping and employment options; and provide opportunities for the use of transit, bicycle and pedestrian travel while protecting key community assets.

Inspires – with a bold vision for the future and provides the policy directives to attain this vision;

Leads – by identifying the path and the tools;

Balances – with fair and equitable distribution of costs and the benefits of growth for all;

Coordinates - state and local planning by providing a single text for guiding growth and conservation decisions



State Planning Goals

Eight State Planning Goals are based directly on the mandates in the SPA. The General Plan Strategy provides a framework for coordinating public and private actions to guide future growth into compact, ecologically designed forms of development and redevelopment and to protect the Environs, consistent with the Statewide Policies and the State Plan Policy Map.

State Planning Goals

General Plan Strategy: Achieve all the State Planning Goals by coordinating public and private actions to guide future growth into compact, ecologically designed forms of development and redevelopment and to protect the Environs, consistent with the Statewide Policies and the State Plan Policy Map.

The following Goals are derived from the State Planning Act:

Goal #1: Revitalize the State's Cities and Towns

Goal #2: Conserve the State's Natural Resources and Systems

Goal #3: Promote Beneficial Economic Growth, Development and Renewal for All Residents of New Jersey

Goal #4: Protect the Environment, Prevent and Clean Up Pollution

Goal #5: Provide Adequate Public Facilities and Services at a Reasonable Cost

Goal #6: Provide Adequate Housing at a Reasonable Cost

Goal #7: Preserve and Enhance Areas with Historic, Cultural, Scenic, Open Space and Recreational Value

Goal #8: Ensure Sound and Integrated Planning and Implementation Statewide

• Goal #1:

▪ Goal #2:

▪ Goal #3:

▪ Goal #4:

▪ Goal #5:

▪ Goal #6:

▪ Goal #7:

▪ Goal #8: Ensure Sound and Integrated Planning and Implementation Statewide

The State Plan Policy Map

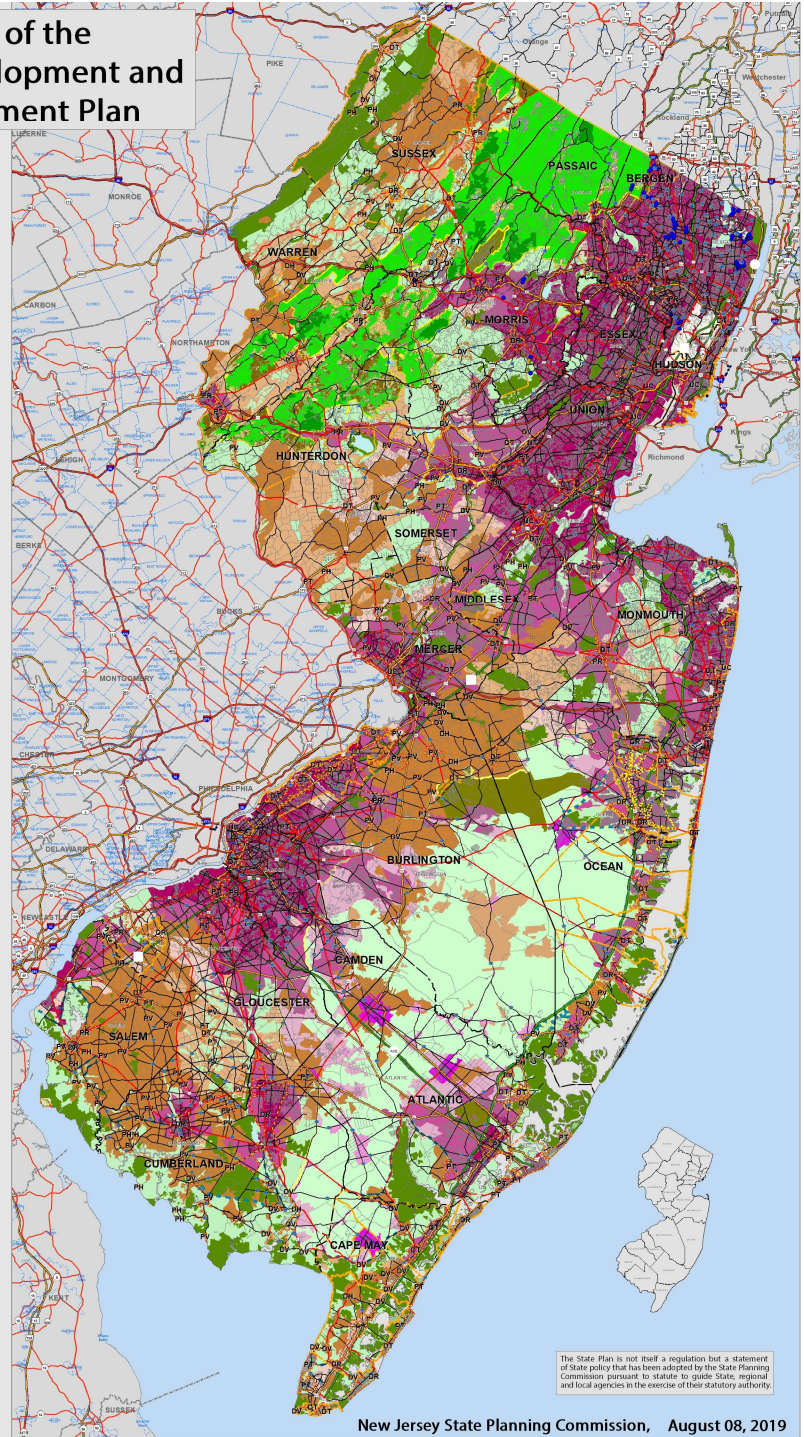
The State Plan Policy Map (SPPM) provides a spatial framework for articulating and implementing statewide goals, strategies and policies.

[LINK TO ONLINE LOCATOR MAP](#)

Policy Map of the State Development and Redevelopment Plan

- UC- Urban Center
- DR- Designated Regional Center
- PR- Proposed Regional Center
- DT- Designated Town
- PT- Proposed Town
- DV- Designated Village
- PV- Proposed Village
- DH- Designated Hamlet
- PH- Proposed Hamlet

- Identified Centers
- Historic and Cultural Site
- Endorsed Plans
- Centers
- Cores
- Nodes
- Urban Complex
- Critical Environmental Site
- Historic and Cultural Site
- Metropolitan Planning Area
- Suburban Planning Area
- Fringe Planning Area
- Rural Planning Area
- Rural/Env. Sensitive Pl. Area
- Env. Sensitive Planning Area
- Env. Sens./Barrier Isl. Pl. Area
- Parks & Natural Areas
- Hackensack Meadowslands
- Water
- Military Installations
- Pinelands Boundary
- Pinelands Regional Growth
- Pinelands Town
- Pinelands Village
- Pinelands Rural Dev. Area
- Pinelands Ag. Prod. Area
- Pinelands Special Ag. Area
- Pinelands Forest & Pres. Area
- Pinelands Military & Federal
- CAFRA Boundary
- Highlands Preservation Area
- Highlands Planning Area
- Conservation Env. Copnst. Subzone
- Conservation Zone
- Existing Community Env. Const. Subz.
- Existing Community Zone
- Lake Community Subzone
- Protection Zone
- Wildlife Protection Zone
- County Boundary
- Authority Routes
- US Routes
- Interstate Routes
- State Routes
- County Routes
- Comm Rail Stations
- Ferry Terminals



STATE OF NEW JERSEY
DEPARTMENT OF STATE
New Jersey Executive Order 100 (2007)

The State Plan is not itself a regulation but a statement of State policy that has been adopted by the State Planning Commission pursuant to statute to guide State, regional and local agencies in the exercise of their statutory authority.

The State Plan has 5 Primary Planning Areas:

Metropolitan Planning Area (PA1) Provide for much of the state's future redevelopment; accommodate public water and sewer; revitalize cities and towns; promote growth in compact forms; stabilize older suburbs; and protect the character of existing stable communities.

Suburban Planning Areas (PA2) Provide for much of the state's future development; promote growth in Centers; accommodate public water and sewer; protect existing stable communities; protect natural resources; redesign and avert sprawl; and revitalize cities and towns.

Fringe Planning Area (PA3) Protect the Environs; revitalize cities and towns; protect the character of existing stable communities; and provide a buffer between more developed Metropolitan and Suburban Planning Areas and less developed Rural and Environmentally Sensitive Planning Areas.

Rural Planning Area (PA4) and **Rural/Environmentally Sensitive Planning Area (PA4B)** Maintain the Environs as large contiguous areas; promote a viable agricultural industry; and protect the character of existing stable communities.

Environmentally Sensitive Planning Area (PA5) and **Environmentally Sensitive/Barrier Islands Planning Area (PA5B)** Protect environmental resources; accommodate growth in Centers; and protect the character of existing stable communities.

Centers

are central places where growth and redevelopment should be attracted and are the key organizing principle for development and redevelopment in the state.

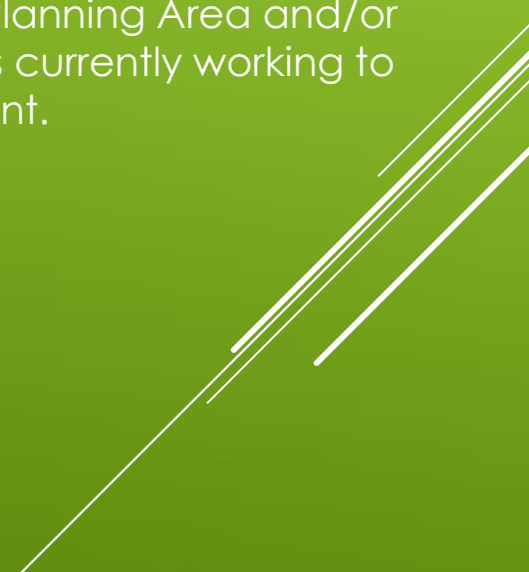
- **Urban** - Generally the largest Centers, offering the most diverse mix of industry, commerce, services, residences and cultural facilities.
- **Regional** - A compact mix of residential, commercial and public uses, serving a large surrounding area and developed at an intensity that makes public transportation feasible.
- **Town** - Traditional Centers of commerce or government throughout New Jersey, with diverse residential neighborhoods served by a mixed-use core offering locally oriented goods and services.
- **Village** - Primarily residential places that offer a small core with limited public facilities, consumer services and community activities.
- **Hamlet** - Small-scale compact residential settlements organized around a community focal point, such as a house of worship, luncheonette, small park or a civic building.
- **Nodes** - Areas of specialized and concentrated commercial, manufacturing, heavy industrial, transportation, and/or utilities.

State-Level Implementation

The State Plan engages full participation and cooperation of state agencies through:

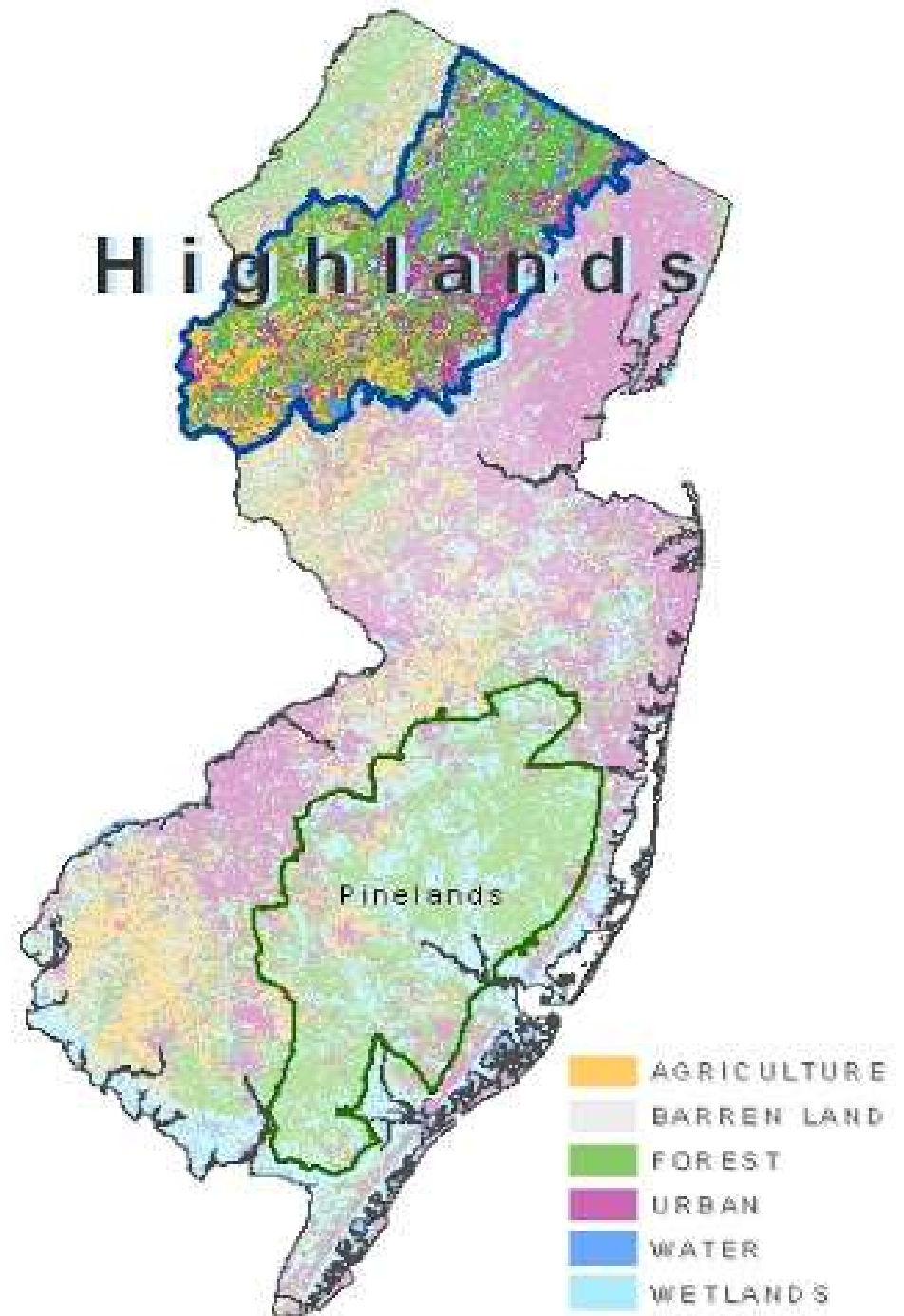
- Participation in the development of the Plan;
- Participation on the SPC;
- Development of consistent agency plans;
- Consistency of state agency investment decisions;
- Development of regulations that are guided by the provisions of the Plan.
- Executive orders direct State departments to implement the Plan.

Since re-adoption in 2001, rule changes, tools and programs have linked funds and other approvals to the SDRP, while many state grant and loan programs, prioritize funding based on “Smart Growth Areas” which are derived from Planning Area and/or Center designation concepts. The Office of Planning Advocacy is currently working to identify additional benefits as further incentive for Plan Endorsement.



Regional and Local Implementation

- SPC works in close coordination with NJDEP which has jurisdiction in areas subject to the Coastal Area Facility Review Act (CAFRA).
- SPC coordinates with the state's regional planning entities including the Highlands Council, Sports & Exposition Authority and Pinelands Commission;
- The MLUL requires municipal master plans to include a specific policy statement indicating consistency with the SDRP.



Plan Endorsement (PE)

- The 2001 State Plan created a comprehensive process where a municipal or regional entity can obtain recognition from the SPC that its land use plans and ordinances are consistent with the State Plan.


Plan Endorsement

Process Outline

Listed below are the 10 steps for the Plan Endorsement process.

No.	Action (& Responsible Party)	
	Step 1: Prepetition (State & Municipality)	
	Step 2: Plan Endorsement Advisory Committee (Municipality)	
	Step 3: Municipal Self Assessment (MSA) (Municipality)	
	Step 4: Opportunities & Constraints Assessment (State)	<i>45 days total for this step</i>
	Step 5: Community Visioning (Municipality)	
	Step 6: Consistency Review** (State)	90 days min, 135 days max
	Step 7: Action Plan Authorization & Completion (State)	
	Step 8: Recommendation Report & Plan Implementation Agreement (PIA) (State & Municipality)	
	Step 9: State Planning Commission Endorsement (State)	
	Step 10: Monitoring & Benefits (State & Municipality)	

EXECUTIVE ORDERS (EO) RESILIENCY & EQUITY

- ▶ EO 89 Recently, Executive Order 89 established a Statewide Climate Change Resilience Strategy. The SPC shall incorporate climate change considerations as a mandatory element for Plan Endorsement.
 - ▶ EO 23
 - ▶ New MLUL requirement for Climate Change Vulnerability Assessment with new Master Plan
- 

What's next?

- OPA is currently working with 94 municipalities with a total of 99 Centers expiring on January 11, 2022 (180 days after the revocation of Executive Order 103, per SPC resolution 2020-07).
- OPA is working closely with the NJDEP to incorporate climate resiliency planning into the PE process as directed by Executive Order 89.
- Rule changes are required to integrate EO 89 with Plan Endorsement and allow for other updates – including guidelines or endorsement renewals.
- SPC take larger role in statewide land use policies?
- State Plan Update?

For more information contact:

Office of Planning Advocacy


609-292-7156 (office)

<https://nj.gov/state/planning/index.shtml>

NJ DOS - NJ Office of Planning
Advocacy - State Plan

BACKGROUND

SUSTAINABLE JERSEY SYNERGY

- ▶ **Many shared goals with SDRP**
 - ▶ **Certification system with 150 potential actions**
 - ▶ **Additional benefits to municipalities**
 - ▶ **Looking for efficiencies to encourage and support municipal progress toward sustainable communities – Smart Growth**
- 

State Plan/Sustainable Jersey

PE TOWNS as of 2-11-2021	PE Status	Green Team (Registration Date)	Bronze Certified Date (Points)	Silver Certified Date (points)	# of certs (3 yr cert)	Gold Star (Type/Date)
Avalon	W	10/26/2018				
City of Asbury Park	P	3/4/2009		10/18/2019 (375)	3	
Borough of Atlantic Highlands	W	3/13/2009	12/17/2018 (165)		3	
Avalon	?	3/25/2009	10/4/2017 (160)		3	
Township of Bedminster	W	8/17/2009	Expired 10/12/2015		3	
Borough of Bernardsville	W	4/20/2009	10/17/2019 (160)		3	
City of Beverly Township	W	3/24/2009				
Bloomington Borough	W	3/10/2009				
Borough of Bound Brook	P	7/15/2015				
Township of Brick	W	4/28/2009		11/7/2019 (365)	3	
City of Burlington	W	10/19/2010				
Burlington Township	W	3/24/2009	10/30/2019 (175)		3	
Cape May Point Borough	P	3/3/2009	12/16/2020 (220)		2	
Township of Chesterfield	?	7/12/2011	11/1/2019 (155)		3	
Cinnaminson Township	W					
Commercial Township	W	4/19/2012	1/26/2021 (150)		3	
Delran Township	W	4/13/2013	10/30/190 (160)		3	
Delanco Township	W	2/8/2016				
Borough of Dover	P					
Edgewater Park	W	3/3/2009				
Elmer	?	5/13/2009				
Borough of English town	P	4/22/2009				
Borough of Far Hills	P	10/26/2009				
Borough of Flemington	W	4/13/2009	Expired 10/4/2014		2	
Township of Florence	W	4/15/2009				
Township of Franklin (Somerset)	?	3/10/2009		10/30/2019 (460)	3	
Township of Freehold	W	5/26/2009				
Galloway Township	W	3/24/2009		10/23/2019 (415)	3	
Gloucester City	W	3/26/2009	11/4/2019 (160)		1	
Borough of Haledon	?	5/6/2009				
Holmdel	W	4/23/2009	10/26/2018 (155)		2	
Borough of Hopatcong	P	9/1/2010	12/16/2020 (280)		3	
Township of Hope	?	6/10/2009	10/18/2019 (165)		3	
Borough of Hopewell (Mercer)	?	3/2/2009				
Township of Lawrence (Cumb)	?					
Township of Little Egg Harbor	W	6/16/2014	12/20/2017		2	
Borough of Manasquan	?	4/2/2012				
Manchester Township	O&C	4/13/2009	11/4/2009 (170)		3	
Borough of Manville	W	3/28/2014	10/19/2018 (175)		1	
Maurice River Township	W	7/15/2010	Expired 10/30/2015			
Middle Township	exp 2021	4/6/2009	10/9/2017 (165)		3	
Township of Millstone	A	5/6/2009				
Borough of Milltown	?	4/3/2009	1/26/2021 (165)		1	
City Millville	W	3/17/2009				
Town of Morristown	O&C	5/20/2009				
Borough of Mount Arlington	?	3/9/2009	12/6/2020		3	
Neptune Township	?	4/13/2009	10/10/2018 (150)		1	
Borough of Netcong	P	3/6/2009				

▶ We looked at municipalities that were going through the Plan Endorsement process and cross referenced them with Sustainable Jersey certified towns.

▶ We found lots of opportunities for efficiencies of actions for the municipalities.

NJ State Plan/Sustainable Jersey Crosswalk



Updated 3/5/2021

N=NO Y=Yes O=Optional C=Conditional

Sustainable Jersey Action	OPA Required?			Status	Pts	Comments/Questions
	PE	EO	Action Plan, MOU or PIA			
Create Green Team (MANDATORY for SJ)	O	N		Can be used for public engagement for PE, in MSA template now. Can it be a PE requirement? It would create accountability to the PIA?	10	Can serve as MSA advisory committee; OPA encourages making the Green Team the MSA Advisory committee = win/win.
Natural Resource Inventory (PRIORITY)	Y	N	PIA	Required where applicable for PE	10	Can't be older than 10 yrs for SJ; what does DEP req? OK to follow SJ standards?
Sustainable Land Use Pledge (PRIORITY)	Y	N	MOU	Statement of sustainability required for PE. Should get a municipality SJ points? Is SJ action specific enough for PE expectations?	10	OPA: PE could more specifically require the SJ pledge; SJ: Could PE pledge last longer than 3 yrs before expiring if secured in a non-certification year?
Build-Out Analysis	Y	N		OPA does during O&C, could earn SJ points; esp if Muni posts it online, incorporates it in planning and it informs zoning.	10	not required for entire town by SJ for pts.
Adopt a Complete Streets Policy (Pre-Requirement for Institute Complete Streets)	Y	N	MOU if not in place	must be in place for PE but SJ has tiered system for different policies	10 30	3 tiers - Good, better, best OPA: must req 'new' DOT Policy (res or ord.) Will DOT require?
Water Conservation Ordinance (SJ PRIORITY)	Y	N	AP	DEP requires for PE	20	SJ model ordinance is a little stricter - is it OK with DEP to use for PE?
Open Space Plans	Y	N	MOU or PIA	Required	10	SJ reqs - Green Acres format, added to Master Plan and w/in 10 yr. OK with DEP?
Environmental Assessment Ordinance	Y or O	N	MOU or PIA	DEP requires for PE? Or recommends?	10	OPA: PE or PIA? Can Dep provide guidance to SJ? ANJEC now has payroll. Must have all SADC elements Does OPA ask the muni if they are meeting to implement? Would SJ tier the action to give pts for participation in county plan SJ's action is being updated in near future... Health in all policies approach. OPA engaged in process. DEP guidance? Revisit when SJ's new action is adopted?
Farmland Preservation Plans	C	N	PIA	Required if applicable, could be in PIA if non-existent. Most counties have it - it may need tweaking to be SJ point-worthy.	10	
Environmental Justice in Planning & Zoning	Y	23	PIA	EJ Action Plan required for PE - see PE Guidelines	10	
Habitat Conservation Ordinance	Y	N	PIA	Conditional - Added to new PE Guidelines	10	
Tree Protection Ordinance	Y	N		Conditional - PIA Checklist?	10	PE Guidance p 23 says 'recommended' not required; p 33 says 'conditional': "depending on applicability and circumstances" Is SJ ordinance acceptable & when is it required?
Brownfields Inventory & Prioritization	C	N	PIA if not MSA	OPA's requires the inventory for PE - Conditional for Urban Centers and Urban Coordinating Councils (UCC) but potentially should be for all.	10, 15	OPA unclear in MSA requirements for prioritization, though inventory is required for Urban - Is this required? Perhaps it should be. Jean H can help...
Resiliency Action Required by EO 89						
Climate Adaptation: Flooding Risk (PRIORITY)	C	89	PIA	Resiliency Awaiting DEP guidance	20	Perhaps NJOPA use SJ's until DEP sets guidelines?
Coastal Vulnerability Assessment	C	89	PIA	Coastal Vulnerability Assessment required (conditional to coastal communities) prior to PE	20	Check when doing MSA review - use SJ guidelines until DEP has guidance? Incorporate Lifelines from BRIC? FEMA/Rutgers/DEP tech assistance
Extreme Temperature Event Plan	C	89	PIA	Recommended for PE	10	Clarify recommended or required for PE. PE Guidelines p23 say recommended...Pg 56 says "Subsequent to PE, as part of PIA, develop Local Resilience Strategy". Perhaps use SJ until DEP adopts details?
Heat Island Assessment *NEW*	C	89	PIA	Recommended p 23; Conditional (Required where applicable) EO 89	10	Clarify recommended or required for PE. Guidelines p23 say recommended...Perhaps use SJ until DEP adopts?
Community Wildfire Protection Plans	C	89	PIA	Conditional - Required where applicable	10	Use SJ criteria? Standards for when to require?
Vulnerable Populations Identification for Emergencies	Y	89	PIA	MSA template mentions it as part of Local Resiliency Strategy, PE Guidelines should specify its inclusion.	10	PE Guidelines p24 suggests recommended - is it required? Narrative of PE Guidelines mentions Local Resiliency Strategy but not specifically vulnerable populations - needs to be added, yes?
Community Asset Mapping	Y	89		PE Guidelines p24 suggest its recommended; p 56 imply required. Most will have this in HMP for municipal assets.	10	SJ is not just municipal assets (new BRIC process include Lifelines) Can PE require to meet SJ standards?
GHG Reduction/Climate Adaptation - required by EO 89 in new PE Guidelines						
Municipal Carbon Footprint (PRIORITY)	Y	89	PIA (1-2 yrs)	In new PE Guidelines p 24 - 'recommended'; p 36 - 'absolute requirement'	10	Municipal Operations Standard: Demonstrate reductions in GHG emissions from municipal operations and facilities at an average annual rate of 3.6% per year for 3 years (i.e., a rate amounting to 10.8% over 3 years or less). Does this work for DEP? Recommended or required?
On-Site Solar System	O	89	PIA (1-2 yrs)	In new PE Guidelines, must do 1 of 5	10	
Geothermal system	O	89	PIA (1-2 yrs)	In new PE Guidelines, must do 1 of 5	10	
Buy Electricity from a Renewable Source	O	89	PIA (1-2 yrs)	In new PE Guidelines, must do 1 of 5	10	
Community-Led Solar Initiatives	O	89	PIA (1-2 yrs)	In new PE Guidelines, must do 1 of 5	10 15	
Renewable Government Energy Aggregation	O	89	PIA (1-2 yrs)	In new PE Guidelines, must do 1 of 5	5-30	
Fleet Inventory (PRIORITY)	Y	89	PIA 1 yr	In New PE Guidelines, must do	10	
Purchase Alternative Fuel Vehicles	Y	89	PIA 1-4 yr	Must do per new PE Guidelines 1-4 yrs	5-15	
Energy Efficiency for Municipal Facilities (PRIORITY)	Y	89	PIA 2 yr	In new PE Guidelines, mandatory. Includes free LGEA audit through BPU	5 to 50	LGEA done for free through BPU
Energy Tracking & Management (PRIORITY)	Y	89	PIA 1 yr	In new PE Guidelines, mandatory	10 to 20	
Public Electric Vehicle Charging Infrastructure	Y	89	PIA (1-2 yrs)	In new PE Guidelines, mandatory	15	

Make Your Town Electric Vehicle Friendly	Y	89	PIA (1-2 yrs)	In new PE Guidelines, mandatory to do 3 of 5	15	
Make Your Town Solar & Wind Friendly	Y	89	PIA 1 yr	In new PE Guidelines, mandatory	15-30	
Optional						
Effective Parking Management	Y	N	PIA if not	Optional. DOT requires in circulation element but this goes beyond?	10	Check with DOT
Transit-Oriented Development Supportive Zoning	Y/C	N	could be PIA	Conditional we encourage and recognize... add to PIA checklist - where applicable	10	Check with DOT
Climate Action Plan (CAP)	O	89	Could be PIA if not req	Not yet specified as EO 89 standards. May as well follow SJ standards. Perhaps OPA can provide a template/framework for this for communities to fill in the gaps.	10	DEP Standards will clarify
Online Municipal Public Service Systems	P	N	PIA if not done	Would be nice - PIA Checklist? Extra credit?	10	
Brownfields Reuse Planning	N	N		Extra Credit? This would be great, if applicable, Could be in MOU or PIA. Perhaps on checklist of possible PIA items?	5 to 15	
Brownfields Marketing	N	N		Extra Credit? This would be great, if applicable, Could be in MOU or PIA. Perhaps on checklist of possible PIA items?	10	
Emergency Communications Planning	N			PIA? MSA?	15	
Community Visioning	Y	N		Required for PE unless waived due to recent visioning activity - either way they should have done it... Can it be point worthy for SJ?	10	SJ Could revise action to give credit for OPA style Land Use visioning - SJ's action is part of a tiered action culminating in the Sustainable Action Plan and is specifically focused on sustainability actions.
Vision Statement and Goals	Y	N			10	Can SJ let it stand with less documentation? Maybe tiered system with points available for PE Visioning?
(Community Sustainability Plan) Indicators and Targets	Y	N	PIA?	This sounds much like a PIA (Plan Implementation Agreement) should earn a municipality these points? Does OPA need to tweak anything? As per EO 89 it will have resiliency and climate action...	10	Could SJ award points for a town developing and implementing a PIA?
Habitat Conservation Ordinance	Y	N		Conditional PIA Checklist?	10	
Enhanced Stormwater Management Control Ordinance *NEW*	Y	N	MOU if not done	Check if standards are same	5-30	PE prob only req DEP req under MS4 SJ more than state model_ord. 4 tiers, the more water & more mgt of water to wq standards, the more points
Bicycle and/or Pedestrian Plan	Y	N	PIA if not done	PE requires circulation element to include Bile/Ped but SJ action is more extensive. If a municipality has earned this action, they shouldn't need to rewrite their masterplan to include it; if they have a complete circulation element in their Master Plan or do one for PE, should it get them any SJ credit? (maybe 5 pts?)	10	Adopt as circ elem in MP is SJ guidance good for DOT's standards? & can OPA approve as part of biennial review for SJ?
Easement Inventory and Outreach <i>(Pre-Requirement for Easement Inspections and Evaluations)</i>	Y?	N		Identify standards - is RDSI enough? PIA Checklist?	10	
Easement Inspections and Evaluations	O	N		PIA Checklist? (SADC or CO administered)		
Digitizing Public Information	N	N		Add to MSA template an/or PIA checklist? EJ?	10	
Historic Preservation Element	C	N		Conditional Could be in PIA if applicable	5 to 10	10 chapters and more required - its hard! longterm but not now...
Bicycle and Pedestrian Audit	O	N	PIA if not done	This is preparatory for plan - report could be used to initiate planning or pilot project but	5, 10	gradients of pts available for some assessment
Anti-Idling Education & Enforcement Program	O	89?		We should require this - it's the law - MOU or PIA?	10	Not really planning -- implementation but incorporate it in PE? PIA?
Diversity on Boards & Commissions (PRIORITY)	O	23	PIA?	Equity is important in PE, but how is it assessed? this could be added to the MSA.	10	OPA play a larger role here? Do the surveys as part of PE?
Commercial Energy Efficiency Outreach	O	89			10 to 20	Replaces Direct Install Outreach Campaign to Local Business Community and Achieving Target Increase in Local Business Participation actions
Residential Energy Efficiency Outreach	O	89			10-20	Replaces the Home Performance with ENERGY STAR Municipal Program & Outreach actions

<u>Sustainable Jersey Action</u>	<u>OPA Required?</u>		<u>Status</u>	<u>Pts</u>	<u>Comments/Questions</u>
	<u>PE</u>	<u>PIA</u>			
Create Green Team (MANDATORY for SJ)	O		Can be used for public engagement for PE, in MSA template now. Can it be a PE requirement? It would create accountability to the PIA?	10	Can serve as MSA advisory committee; OPA encourages making the Green Team the MSA Advisory committee = win/win.
Natural Resource Inventory (PRIORITY)	Y	PIA	Required for PE	10	Can't be older than 10 yrs for SJ; what does DEP req? OK to follow SJ standards?
Sustainable Land Use Pledge (PRIORITY)	y	MOU	Statement of sustainability required for PE. Should get a municipality SJ points? Is SJ action specific enough for PE expectations?	10	OPA: PE could more specifically require the SJ pledge; SJ: Could PE pledge last longer than 3 yrs before expiring if secured in a non-certification year?
Build-Out Analysis	Y		OPA does during O&C, could earn SJ points; esp if Municipality posts it online, incorporates it in planning and it informs zoning.	10	Not required for entire town by SJ for pts



State of New Jersey
 DEPARTMENT OF STATE
 NEW JERSEY STATE PLANNING COMMISSION
 P.O. BOX 820
 TRENTON, NEW JERSEY 08625-0820

PHILIP D. MURPHY
Governor

THOMAS K. WRIGHT
Chairman

SHEILA Y. OLIVER
LT. GOVERNOR

DONNA A. RENDEIRO
Executive Director/Secretary

Resolution No. 2021-07
 Page 1 of 2

Date: March 3, 2021
 Patron: Thomas Wright

RESOLUTION

**APPROVAL AND ADOPTION OF A PARTNERSHIP AMONG THE OFFICE OF PLANNING ADVOCACY,
 THE STATE PLANNING COMMISSION, AND SUSTAINABLE JERSEY**

RESOLUTION

**APPROVAL AND ADOPTION OF A PARTNERSHIP AMONG THE OFFICE OF PLANNING ADVOCACY,
 THE STATE PLANNING COMMISSION, AND SUSTAINABLE JERSEY**

and efficient planning and development review data, tools and procedures;" and

WHEREAS, the Sustainable Jersey Program, a non-profit 501(c)(3) partnership organized in The College of New Jersey, is a network of municipalities, schools and school districts working collectively to bring about a sustainable New Jersey, whose mission is to empower New Jersey communities to build a better world

WHEREAS, staffs of both the Office of Planning Advocacy (OPA) and Sustainable Jersey (SJ) have identified similarities in both programs related to land use sustainability goals and objectives and have identified efficiencies that can be had by municipalities that are involved in both the Plan Endorsement and SJ certification process by coordinating programmatic requirements; and,

- ▶ NJ Office of Planning Advocacy and Sustainable Jersey have complementary missions in that both support municipalities in creating sustainable and resilient communities with the greatest equity and efficiency.
- ▶ “A key goal behind this comparison is to minimize duplication of efforts by municipalities as they work on sustainability and provide them with unified guidance to support their undertaking additional meaningful actions.”

SPC/SJ SYNERGY PARTNERSHIP

SPC Resolution

- ▶ **Crosswalk**
 - ▶ **Municipality list**
 - ▶ **Recommended Task List**
- 
- A decorative graphic consisting of several parallel white lines of varying lengths, slanted upwards from left to right, located in the bottom right corner of the slide.

CAN YOUR MUNICIPALITY BENEFIT FROM OUR PARTNERSHIP?

- ▶ Bronze or Silver Certification?
- ▶ Extra points on grant applications?
- ▶ Support for projects in smart growth areas/Centers/PA 1/2, Endorsed Municipalities?

LET US HELP!

RONALD SIMONE

BSBA, MPA

CITY ADMINISTRATOR



Sustainable Jersey Bronze Certified and
4 Year Tree City USA Community
Accredited CFMP/Vegetation Mgt. Plan
MSA Submitted – Islandwide Center Designation



North Wildwood, NJ

The City of North Wildwood is a barrier island community within Cape May County, NJ devoted to providing efficient, dependable, transparent and responsive municipal services to the residents, visitors and property owners of the community while offering the lowest average property taxes of any shore town in the State of New Jersey. By practicing sound and responsible fiscal management, the City of North Wildwood is able and dedicated to investing in local shore protection efforts, major infrastructure, parks improvements, and resiliency and sustainability projects that strengthen our City to protect critical facilities/infrastructure, real properties and life against the effects of sea-level-rise/climate change.

Biggest Challenge

- Climate Change/Sea-Level-Rise
 - Erosion
 - Tidal Flooding
 - Accelerated depreciation of infrastructure
 - Bulkheads
 - Storm-sewer system

Tidal Flooding



Erosion





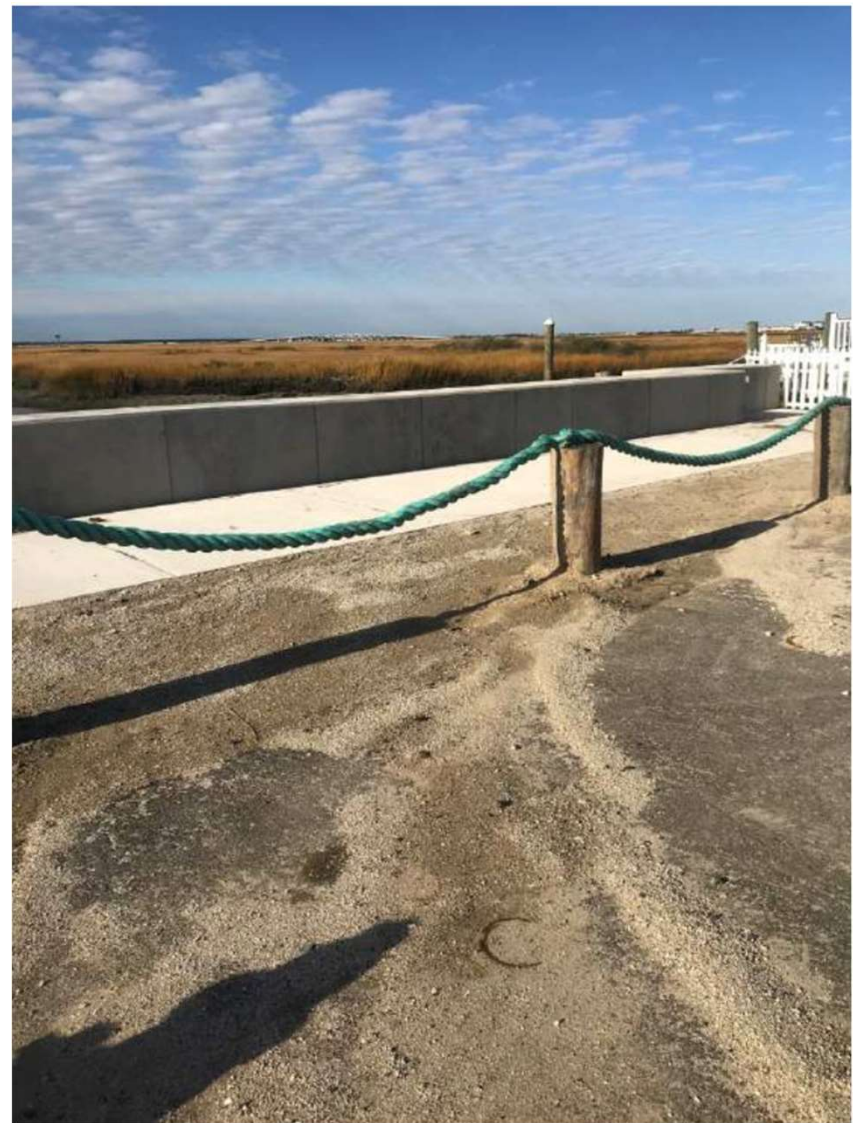
Coastal Resiliency Efforts

- Annual Sand-Back-Pass Project
- Bulkhead Redevelopment
- Storm-sewer Reconstruction
- Pump-stations
- Adoption of Higher Regulatory Standards

Sand Back Pass



Bulkheads





Green Team's Community Partnerships

- Beach Beautification Brigade
- Cigarette Butt Recycling Program
- (Free) Employee Farmers Market
- Monofilament Fishing-line Recycling
- NWShovels Program

Beach Clean up Stations

Various Beach Cleanup Stations at Surf Ave, 7th Ave, 15th Ave, and 22nd Ave



Monthly Beach Cleanups

Your Beach Needs Your Help!



Join the North Wildwood Beach Beautification Brigade!!!

Monthly Beach Sweeps meet at 9:00 AM

North Wildwood – 1st & Surf Ave Pavilion

Wildwood – Douglass Pavilion

January 9 th , 2021	February 13 th , 2021	March 13 th , 2021
April 17 th , 2021 (with Clean Ocean Action)	May 8 th , 2021	June 12 th , 2021
July 10 th , 2021	August 14 th , 2021	September 11 th , 2021
October 23 rd , 2021 (with Clean Ocean Action)	November 13 th , 2021	December 11 th , 2021

Contact us at NWWBeachBrigade@gmail.com or join our Facebook group North Wildwood Beach Beautification Brigade for shareable events and more info!



Cigarette Butt Recycling

- Funded by a PSEG Sustainable Jersey Grant and through a partnership w/ Terracycle, North Wildwood recycles cigarette butts at every beach and boardwalk entrance. Last year, North Wildwood recycled 26.4 lbs of cigarettes, which equates to 26,400 cigarettes.



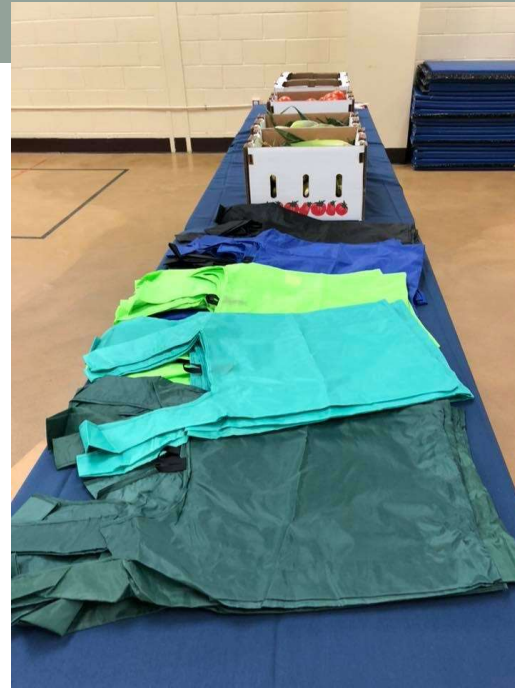


NWShovels Program



(Free) Employee Farmers Market

- Funded by the Atlantic County Joint Insurance Fund and through a partnership w/ LeGates Local Farmers Market, the City provides free farm fresh vegetables for employees four (4) times a year.



Surfrider Foundation Partnership





Community Partnerships

- Cost very little to nothing
- Engage the residents of your community
- Promote and inspire sustainability
- Improves your community and local ecosystem

Commercial Township, Cumberland County

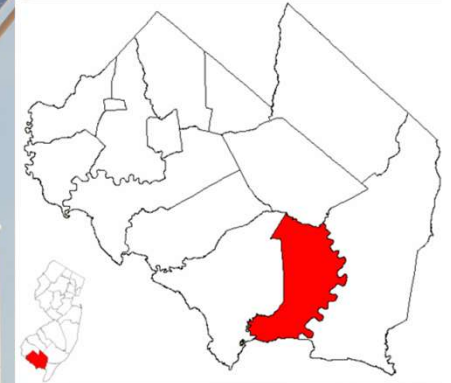


1768

COURT

→

- SJ Bronze Certified January 2021
- Initiated Plan Endorsement Process with Prepetition Meeting March 2020



Sustainable Jersey Supporters & Sponsors

Program Underwriters



Grants Program



Corporate Sponsors

PLATINUM



GOLD



SILVER

