



# Resources to Support Local Sustainability Initiatives



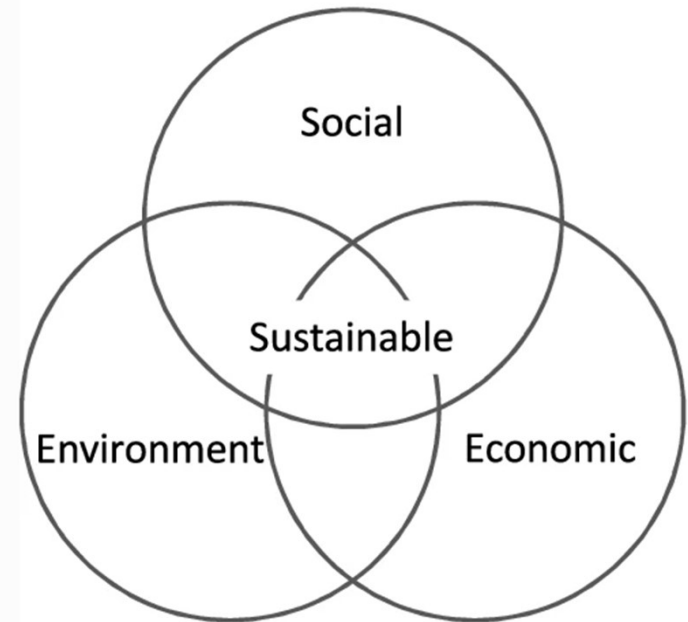
Facebook: [SustainableJersey](#) | Twitter: [@SJ\\_Program](#), [@SJ\\_Schools](#) | Insta: [sustainable\\_jersey](#) | LinkedIn: [sustainable-jersey](#)



# What is Sustainability?

---

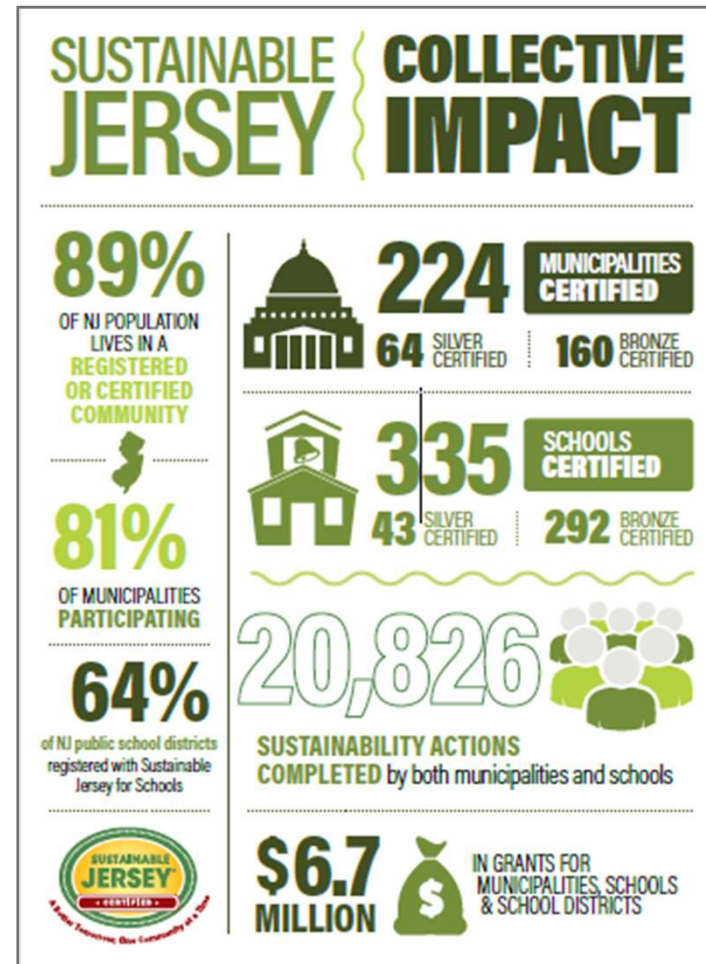
**Sustainability** is most often defined as meeting the needs of the present without compromising the ability of future generations to meet theirs. It has three main pillars: social, economic, and environmental.





# A Framework for Action

- Coordinates priorities, resources, and policy among public and private state and local actors
- Develops **tools, resources,** and **guidance** to make progress
- Provides access to **grants** and **assistance**
- **Recognizes** accomplishments





# 2020 Sustainable Jersey Annual Report

RIISING TO THE CHALLENGE

GUIDING ACTION • EMPOWERING CHANGE • SHAPING OUR FUTURE



# The Way Forward

---

Build the movement

Build local capacity

Everyone is included and  
benefits

Share the movement beyond  
our borders



# Strategic Initiatives

---

---

Equity

---

Energy and Climate Change

---

Resilience

---

Water

---

Complete Streets

---

Public Health



*Sustainable Jersey is striving to become more equitable, more inclusive, and better prepared to do the work of advancing social justice while supporting municipalities and schools in New Jersey to do the same. In doing so, Sustainable Jersey commits to take anti-racist action and to oppose oppression in all forms.*



# Current Steps

---

- Policy adopted to apply equity screen to new actions
- Developing new actions: *Capacity-building to Eliminate Implicit Bias; Municipal Equity Assessment*
- Funding proposals to support equity coaches
- Energy TA promotes energy efficiency assistance to low & moderate-income municipalities
- Energy TA tracks participation by municipal demographics (race, income, etc.)





# Building Local Capacity

---



ACTIONS AND  
RESOURCES



TRAINING



TECHNICAL  
ASSISTANCE



GRANTS



# Energy and Climate Change

Nancy Quirk

Energy Program Manager





# Municipal Energy Actions

	Energy Efficiency	Renewable Energy	Alternative Fuel Vehicles
<b>Municipal Operations</b>	<ul style="list-style-type: none"> <li>• Energy Efficiency for Municipal Facilities</li> <li>• Energy Tracking and Management</li> </ul>	<ul style="list-style-type: none"> <li>• On-Site Geothermal System</li> <li>• On-Site Solar System +10 pt storage/resilience + 5 pt solar thermal</li> <li>• On-Site Wind System</li> <li>• Buy Renewable Energy</li> </ul>	<ul style="list-style-type: none"> <li>• Fleet Inventory</li> <li>• Purchase Alternative Fuel Vehicles</li> <li>• Meet Green Fleet Targets</li> </ul>
<b>Community Energy Use</b>	<ul style="list-style-type: none"> <li>• Energy Assistance Outreach</li> <li>• Commercial Energy Efficiency Outreach</li> <li>• Residential Energy Efficiency Outreach</li> </ul>	<ul style="list-style-type: none"> <li>• Make Your Town Solar Friendly</li> <li>• Municipally Supported Community Solar</li> <li>• Community-Led Solar Initiatives</li> <li>• Renewable Government Energy Aggregation (R-GEA)</li> </ul>	<ul style="list-style-type: none"> <li>• Make Your Town Electric Vehicle (EV) Friendly</li> <li>• Public EV Chargers</li> <li>• Electric Vehicle Outreach</li> </ul>



# Gold Star Standard in Energy

## Municipal Operations

### Municipal Buildings

- Energy efficiency
- Operations / equipment
- Green building policy

### Municipal Fleet

- Fleet electrification
- Route optimization
- Telematics

### GHG reductions

- 3.6% annually
- 10.8% over 3 years

## Community Actions (two from each category)

### Energy Efficiency

- Energy Assistance Outreach
- Commercial Energy Efficiency Outreach
- Residential Energy Efficiency Outreach

### Renewable Energy

- Make Your Town Solar Friendly
- Municipally Supported Community Solar
- Community-Led Solar Initiatives

### Transportation

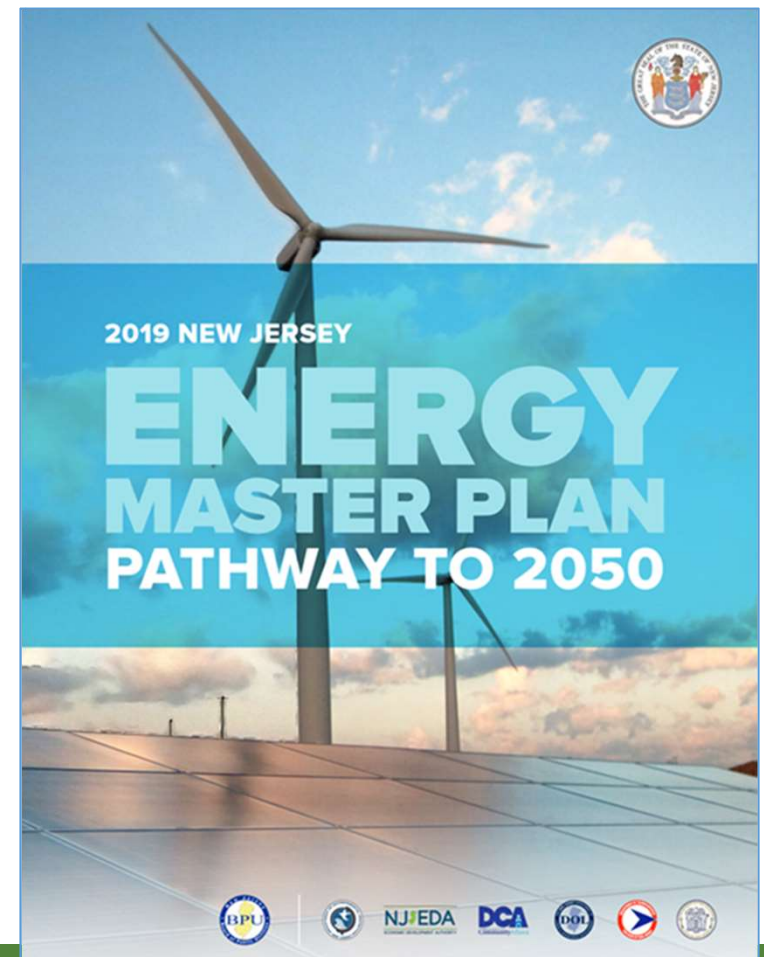
- Make Your Town Electric Vehicle Friendly
- Public Electric Vehicle Chargers
- Electric Vehicle Outreach



# Our Energy Future

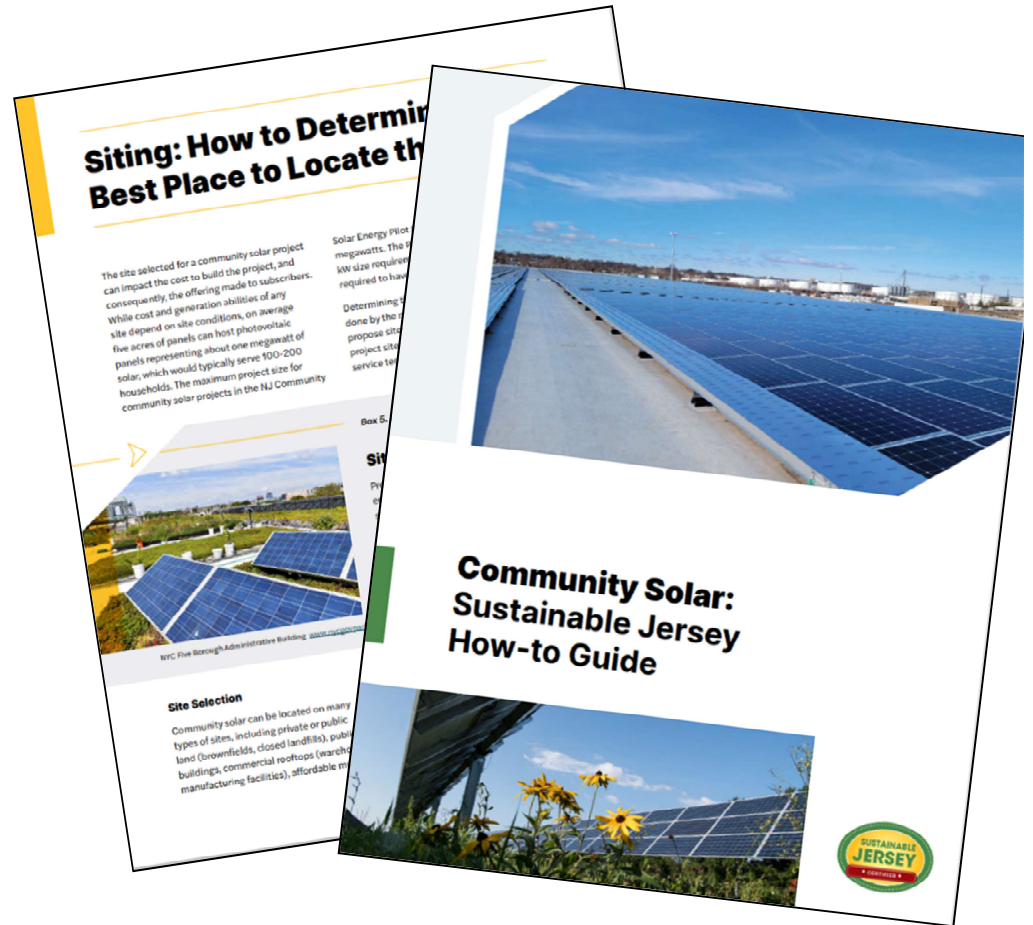
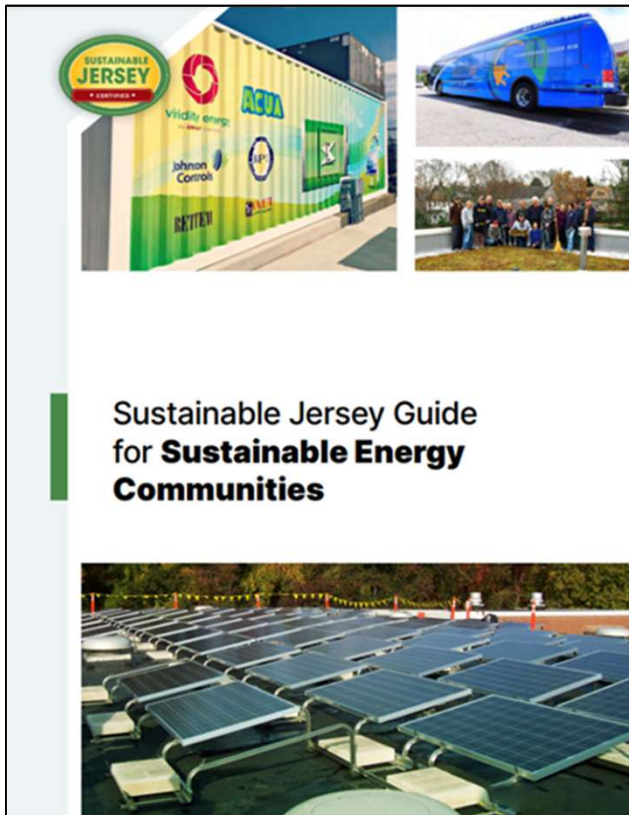
## Municipal roles in meeting state energy goals

- NJ Energy Master Plan
  - Reduce emissions
    - Transportation
    - Buildings
  - Maximize energy efficiency
  - Increase renewable energy
  - Expand participation in clean energy economy





# Energy Resources



Sustainable Jersey's [Community Solar Resource Page](#)



# SolSmart



- Points-based national certification program
- Solar planning, zoning, permitting, and outreach
- SolSmart Silver counts for Make Your Town Solar Friendly Action

**[solsmart.org](http://solsmart.org)**

## Get started with SolSmart!

### *Solar Statement* to include

- Commitment to SolSmart certification
- Past solar achievement
- Solar goals
- Commitment to track solar metrics in your community

Image from [www.solsmart.org](http://www.solsmart.org).





# Online Solar Permitting Tool

---



- Developed by National Renewable Energy Laboratory (NREL)
- Free for municipalities
- Automated plan review, code compliance check
- Online fee payment
- Can reduce permitting time by 5-10 days

**[solarapp.nrel.gov/](https://solarapp.nrel.gov/)**



Image from NREL. [solarapp.nrel.gov](https://solarapp.nrel.gov)

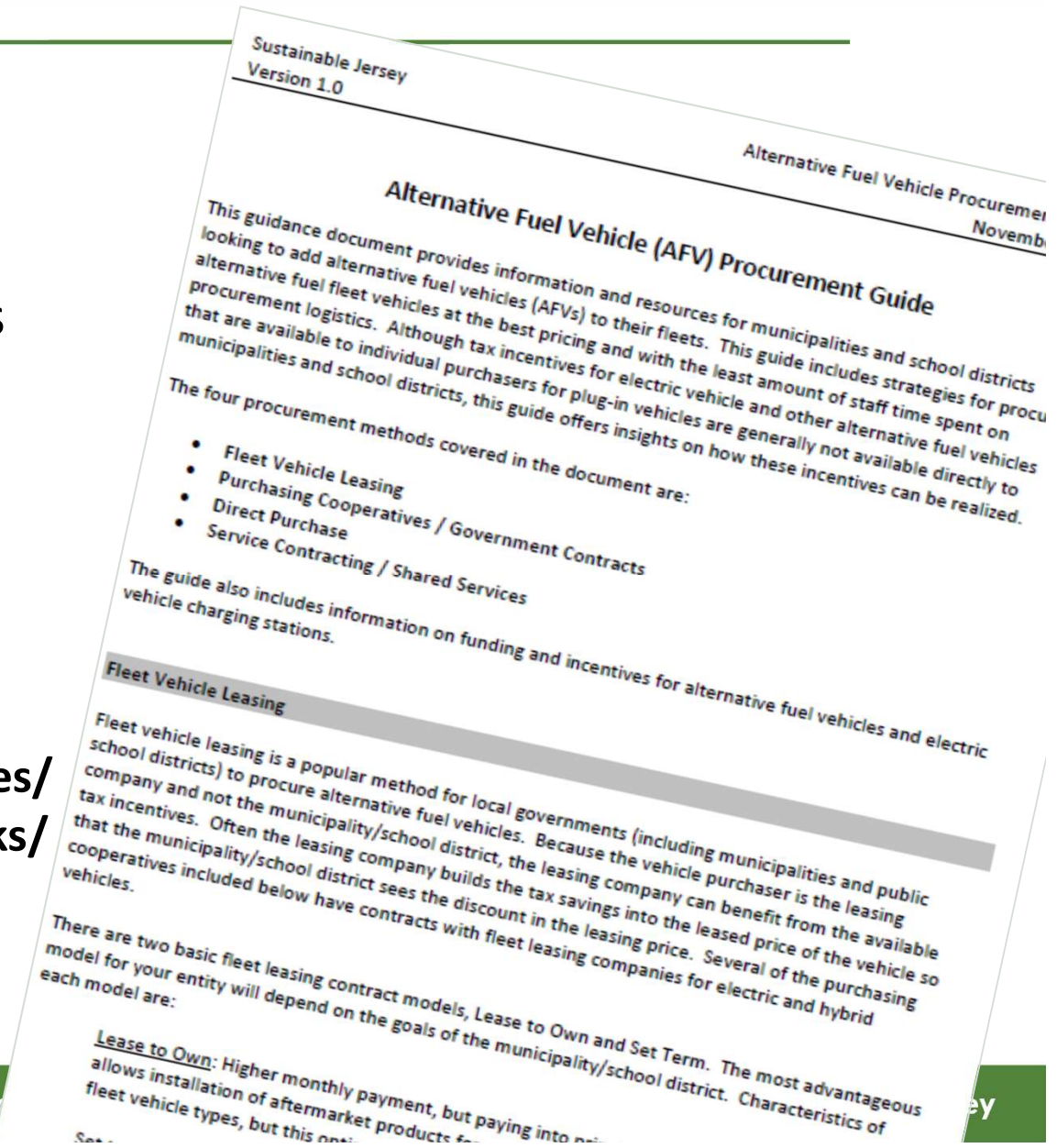




# EV Procurement Guide

- Fleet Leasing
- Purchasing Cooperatives
- Government Contracts
- Direct Purchase Options
- Service Contracts

[sustainablejersey.com/resources/publications/energy-guidebooks/](https://sustainablejersey.com/resources/publications/energy-guidebooks/)





# \*New Action\*

## Electric Vehicle Outreach

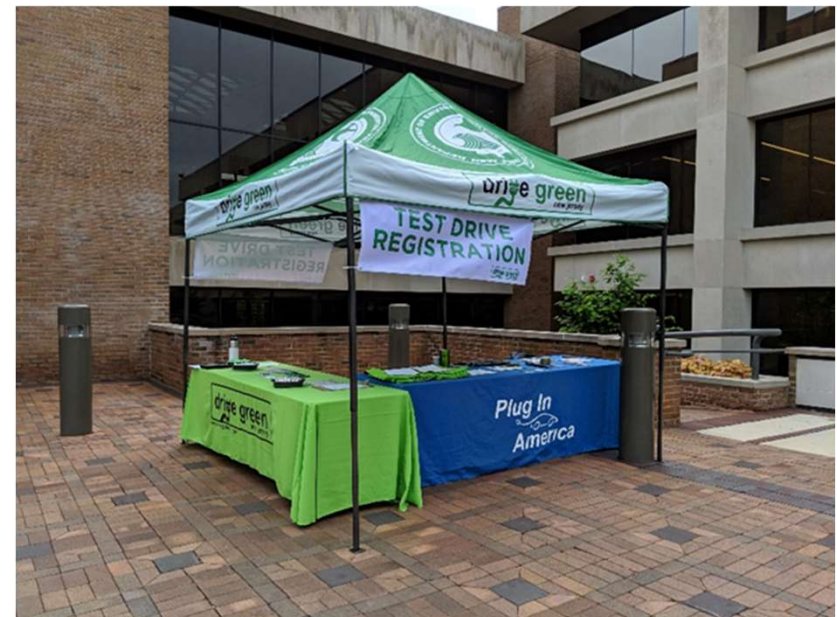
---

### Select two audience types

- Residential
- Commercial
- Multifamily
- Commercial fleets
- Workplaces
- Auto dealerships

### Complete two outreach activities

- Webpage on green team or municipal website
- Brochure, flyer, newsletter
- Award recognizing businesses for EV/EVSE accomplishments
- “Ride and drive” event





# Action Update: Make Your Town EV Friendly

- Adopt Statewide EV Ordinance
- Update land use code
- First responder training

## Statewide EV Ordinance

[www.nj.gov/dca/dlps/home/  
modelEVordinance.shtml](http://www.nj.gov/dca/dlps/home/modelEVordinance.shtml)

Facebook: SustainableJersey | Twitter: @SJ\_Pr

AN ORDINANCE  
AUTHORIZING AND ENCOURAGING  
ELECTRIC VEHICLE  
SUPPLY/SERVICE EQUIPMENT (EVSE) & MAKE-READY PARKING SPACES

*[Note: Pursuant to P.L. 2021, c.171, all sections of this model ordinance become effective in each municipality upon its publication on the Department of Community Affairs' Internet website. Municipalities may make changes to the reasonable standards in the model ordinance as noted below through the normal ordinance amendment process. However, municipalities may not make changes to the legislatively mandated requirements in Sections C., D., and E.]*

This Ordinance sets forth procedures for the installation of Electric Vehicle Supply/Service Equipment (EVSE) and Make-Ready parking spaces and establishes associated regulations and other standards within the **{name of municipality}** of **{name of county}**.

WHEREAS, supporting the transition to electric vehicles contributes to **{name of municipality}** and **{name of county}**'s commitment to sustainability and is in the best interest of public welfare; and

WHEREAS, installation of EVSE and Make-Ready parking spaces encourages electric vehicle adoption; and

WHEREAS, the **{name of municipality}** encourages increased installation of EVSE and Make Ready parking spaces; and

WHEREAS, adoption of this ordinance supports the State of New Jersey's goals to reduce air pollutants and greenhouse gas emissions from the transportation sector as outlined and supported by various programs related to NJ's 2019 Energy Master Plan, Global Warming Response Act (P.L.2007, c.112 (C.26:2C-37 et al.)), and EV Law (P.L. 2019, c. 362); and

WHEREAS, P.L. 2021, c.171, which Governor Murphy signed into law on July 9, 2021, requires that EVSE and Make-Ready parking spaces be designated as...

or use districts and establish...



# \*New Action\* Energy Assistance Outreach

- Outreach about energy efficiency and bill payment assistance programs
- Partner with local community organizations
- Encourage local food bank, health clinic, social service agencies to take advantage of energy efficiency programs
- Comfort Partners outreach campaign



Press Room | Library | FAQs

HOME RESIDENTIAL COMMERCIAL, INDUSTRIAL AND LOCAL GOVERNMENT

COMMERCIAL, INDUSTRIAL & LOCAL GOVERNMENT

PROGRAMS

- EXISTING BUILDINGS ENERGY EFFICIENCY
  - BENCHMARKING
  - LARGE ENERGY USERS PROGRAM
  - LOCAL GOVERNMENT ENERGY AUDIT
  - UTILITY PROGRAMS
- NEW CONSTRUCTION EFFICIENCY
  - SINGLE MEASURE: SMARTSTART NEW CONSTRUCTION
  - MULTI MEASURE: CUSTOMER TAILORED
  - COMPREHENSIVE: PAY FOR PERFORMANCE
- DISTRIBUTED ENERGY RESOURCES
  - COMBINED HEAT AND POWER - FUEL CELL
  - DER MICROGRID FEASIBILITY STUDIES
- OTHER/SPECIALIZED

Home » Commercial & Industrial

### Local Governments, Schools and Non-Profits

**Note: Select energy efficiency programs for existing buildings are transitioning to the utility companies**  
To learn more about this transition and for utility contact information, please visit this page.

NJCEP Pay for Performance (P4P) for existing buildings and NJCEP Direct Install will no longer accept applications starting July 1, 2021. All eligible applications accepted before that time will continue with NJCEP until final payment.

PSE&G customers who purchased electric or natural gas energy efficiency equipment prior to June 1, 2021 may be eligible for SmartStart Buildings (SSB) and/or Customer Tailored Energy Efficiency Program (CTEEP) rebates. For non-PSE&G customers, equipment purchased prior to July 1, 2021, may be eligible for SSB and CTEEP rebates.

**njcleanenergy.com**

(CTEEP), and Pay for Performance (P4P) programs will remain available for new construction projects and major gut renovation projects only beginning on July 1, 2021.



# Energy Technical Assistance

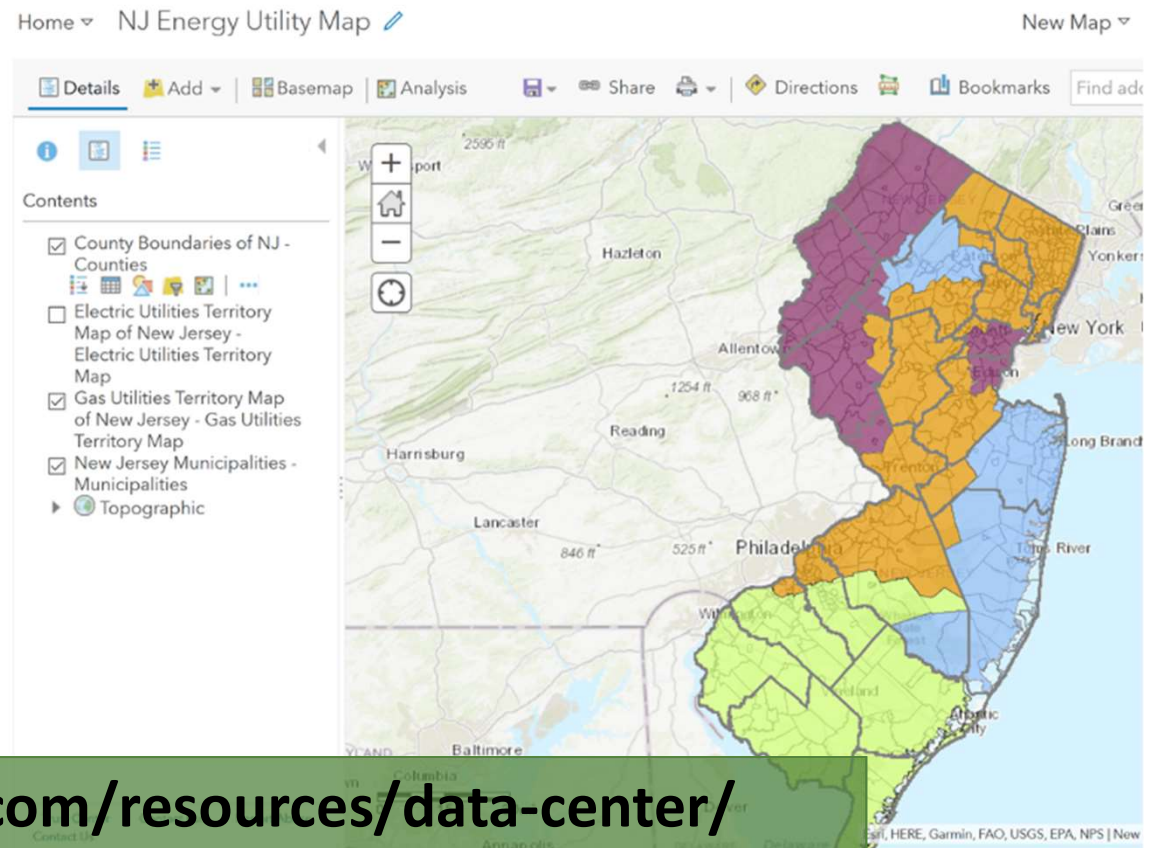
- Assistance for Energy Tracking and Management
- Apply for New Jersey Clean Energy Program and utility incentives
- Create Fleet Inventory and Fleet Transition Plan
- Environmental Defense Fund Fellows





# Sustainable Jersey Data Center

- Utility Energy Data by Municipality
- Transportation Data
- GHG Emissions
- NJCEP Data
- Maps
  - Urban Heat Island
  - Utility Service Territories



[sustainablejersey.com/resources/data-center/](https://sustainablejersey.com/resources/data-center/)



# Utility Energy Data by Municipality

## 2015-2019 Utility Energy Data by Municipality

Utility Acronyms: ACE - Atlantic City Electric ETG - Elizabethtown Gas

JCPL - Jersey Central Power & Electric MEU - Municipal Electric Utility

Data Acronyms: CWC - Combined with Commercial NDA - No Data Available NDR - No Data Reported

\* Further information found at the end of the table

Municipality	County	Year	Utility	Electric (kWhrs)				Natural Gas (Therms)		
				Residential	Commercial	Industrial	Street Lighting	Utility	Residential	Commercial
Alexandria township	Hunterdon	2015	JCPL	23,711,407	6,022,846	20,240	24,588	ETG	NDR	NDR
Alexandria township	Hunterdon	2018	JCPL	24,194,813	5,109,776	28,640	24,588	ETG	NDR	NDR
Alexandria township	Hunterdon	2019	JCPL	23,397,455	5,104,664	13,400	24,588	ETG	NDR	NDR
Allamuchy township	Warren	2015	JCPL	20,730,321	6,870,813	877,761	163,374	ETG	1,423,922	49,181
Allamuchy township	Warren	2016	JCPL	NDA	NDA	NDA	NDA	ETG	1,453,969	50,358
Allamuchy township	Warren	2017	JCPL	NDA	NDA	NDA	NDA	ETG	1,573,053	56,360
Allamuchy township	Warren	2018	JCPL	19,826,158	6,130,264	868,667	166,544	ETG	1,814,281	65,013
Allamuchy township	Warren	2019	JCPL	19,427,553	6,216,614	906,539	170,969	ETG	1,736,972	70,243
Allendale borough	Bergen	2015	RECO/PSEG	28,346,006	29,338,256	NDR	NDR	PSEG	3,623,971	1,274,183
Allendale borough	Bergen	2016	RECO/PSEG	28,068,829	31,480,444	NDR	NDR	PSEG	3,225,860	1,137,864
Allendale borough	Bergen	2017	RECO/PSEG	26,736,094	31,173,292	NDR	NDR	PSEG	3,387,689	1,127,450
Allendale borough	Bergen	2018	RECO/PSEG	28,070,368	30,061,589	NDR	112,628	PSEG	3,704,200	1,316,375
Allendale borough	Bergen	2019	RECO/PSEG	26,663,680	28,432,955	NDR	112,436	PSEG	3,597,916	1,269,140
Allenhurst borough	Monmouth	2015	JCPL	4,924,969	5,445,009	20,020	91,599	NJNG	570,346	87,375
Allenhurst borough	Monmouth	2016	JCPL	NDA	NDA	NDA	NDA	NJNG	452,328	75,905
Allenhurst borough	Monmouth	2017	JCPL	NDA	NDA	NDA	NDA	NJNG	485,390	79,122
Allenhurst borough	Monmouth	2018	JCPL	5,074,239	2,700,924	17,463	83,479	NJNG	559,396	83,440
Allenhurst borough	Monmouth	2019	JCPL	4,903,906	2,527,909	17,688	91,068	NJNG	509,360	83,036

2015-2019 Working Dataset



# Upcoming Energy Events

---

## NJLM sessions

- **Making the Most of Solar in NJ**
  - Wednesday, 11/17
  - 1:30 pm – 2:45 pm
  - Room 421
- **Municipal Fleet Electrification**
  - Thursday, 11/18
  - 10:45 am – Noon
  - Room 421

## Sustainable Jersey Webinars

- **Community Energy Plan Grants: A Primer**
  - December 1, 2021, 1:00pm – 2:30pm
- **Make Your Town EV Friendly: New Statewide Model EV Ordinance, New Sustainable Jersey Actions, New Funding**
  - December 7, 2021, 1:00pm – 2:30pm
- **Creating a Community Energy Plan: Resources and Technical Assistance**
  - January 12, 2022, 1:00pm – 2:30pm
- **Funding for Transitioning Fleets to EVs**
  - January 26, 2022, 1:00pm – 2:30pm





# Resilience, Water and Complete Streets

Anne Healy

Program Manager Policy and Planning





# Resilience



Thursday, Sept. 2: A group of Navy recruiters in Philadelphia help clear debris from the house of Ashley Thomas which was destroyed by a tornado in Mullica Hill, New Jersey.  
Branden Eastwood/AFP via Getty Images



# Resilience



- **Coastal Vulnerability Assessment (CVA)**
- **Climate Adaption: Flood Risk**
- **Heat Island Assessment**
- **Extreme Temperature Event Plan and**
- **Vulnerable Populations Identification for Emergencies**

Thursday, Sept. 2: Highway 440 flooded in Jersey City of New Jersey as hundreds of cars stuck in water as Hurricane Ida left behind flash floods east coast.  
Tayfun Coskun/Anadolu Agency via Getty Images



# Resilience

---



DURING FLOOD - Sept. 2, 2021: Overview of flooded homes along Huff Avenue and Railyard in Marville, N.J.  
Satellite image ©2021 Maxar Technologies



# Resilience

---

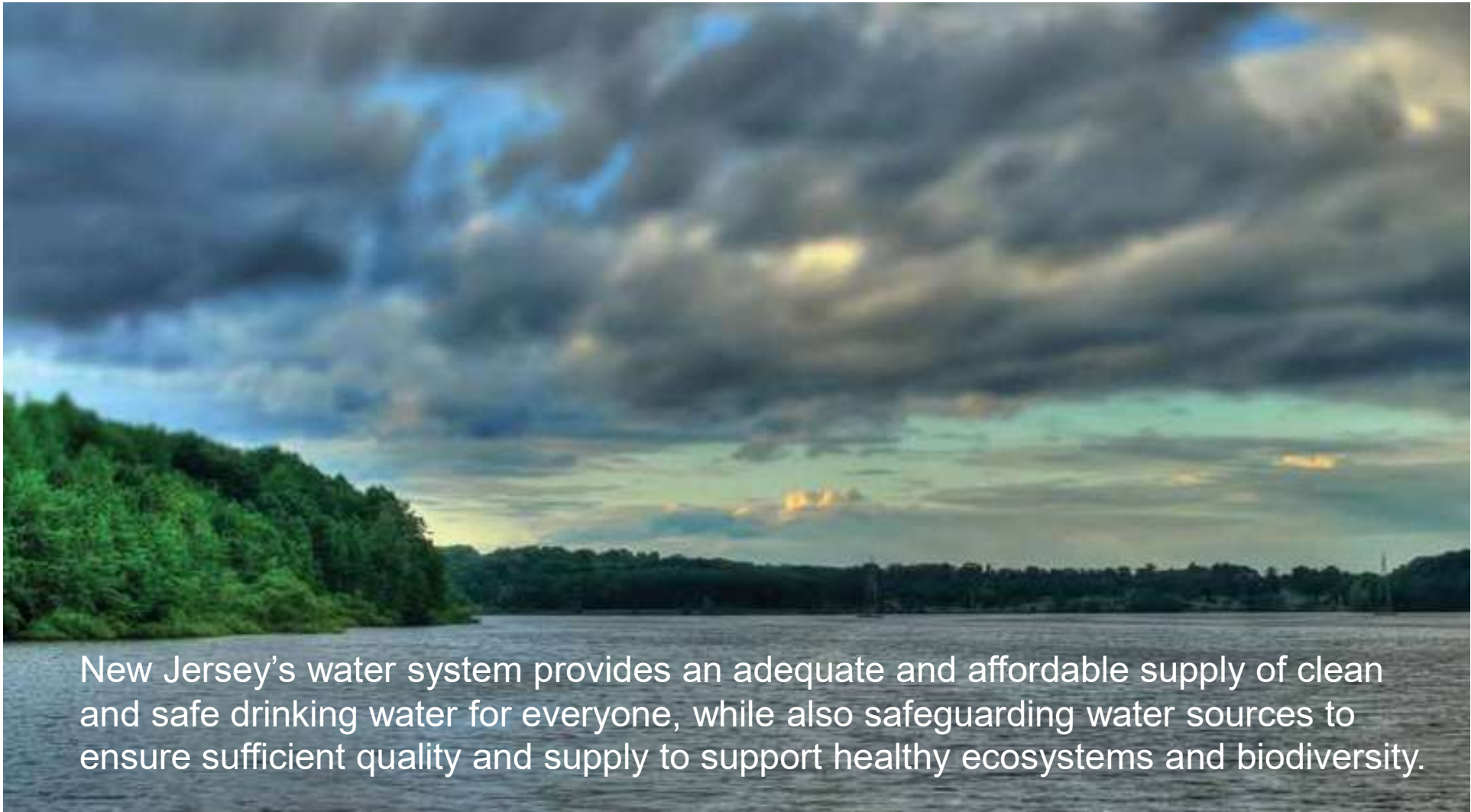


BEFORE FLOOD - July 14, 2020: Overview of homes along Huff Avenue and Raiyard in Manville, N.J.  
Satellite image ©2021 Maxar Technologies



# Water Goal

---



New Jersey's water system provides an adequate and affordable supply of clean and safe drinking water for everyone, while also safeguarding water sources to ensure sufficient quality and supply to support healthy ecosystems and biodiversity.

- Municipal Dashboard**

---

- > **Action Development**

---

- Priority & Prerequisite Actions**

---

- 2021 Certification Cycle**

---

- Energy Gold
    - Health Gold
    - Water Gold

---

- Program Updates**

---

- Search Participating Municipalities & Approved Actions**

---

- Resources**

**Gold Star Standards**

All certified municipalities are eligible to earn Gold Star recognition for reaching high levels of achievement in key dimensions of sustainability. Gold Star Standards establish the specific actions and levels of performance that support what we need to achieve as individual communities and as a state, as defined in the [2015 Sustainable State of the State Report](#). The award of a Gold Star indicates that a municipality is making an effective, fair and timely contribution to the collective achievement of our sustainability goals.



Gold Stars are awarded for individual dimensions of sustainability. Currently there are Gold Star Standards in [Energy](#), [Health](#) and [Water](#).

↑ BACK TO TOP	EXPAND ALL ↓	COLLAPSE ALL ↑
Energy	↓	
Health	↓	
Water	↓	

# Gold Star Standard in Water

Completing specific actions will help a municipality earn the gold star in water!

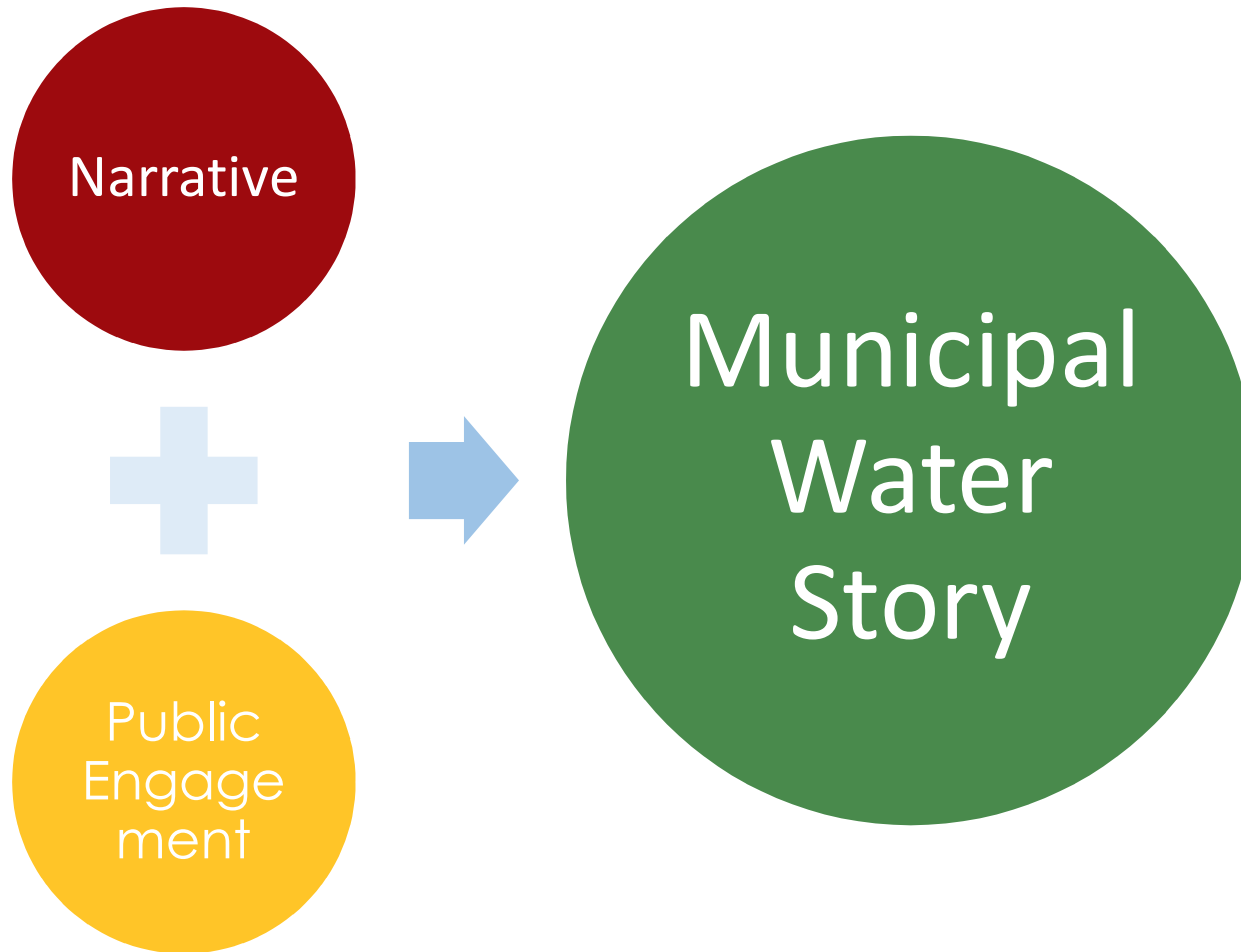
Learn more about Water Gold here:

[bit.ly/SJWaterGold](https://bit.ly/SJWaterGold)



# Municipal Water Story

---







# Enhanced Stormwater Management Control Ordinance

Tier	Action	Points
1	Low impact techniques	5
2	Applicability; Retention and definition of Major Development	15
3	2 additional enhancements	25
4	4 additional enhancements	35





# Open Space Plan – Access to Water

## Open Space Plans

10 Points

### Why is it Important?

Who should lead and be involved with this action?

Timeframe

Project Costs and Resource Needs

What to do and how to do it ("How to")

What to submit to earn points for this action

Resubmission Requirements

Approved Action Expiration Date

Updated April 2021

The goal of this action is municipal Recreation Plan and its adoption local Master Plan. An Open Space as the Open Space Plan, OSP) shd Jersey Department of Environmen The Green Acres guidelines requir municipal OSRP if a town wishes to Incentive Program for enhanced c establishes open space goals and of existing and potential open spc well as conservation objectives ar provides a framework and directio for preservation, improvement and

In addition to addressing the 10 c [Green Acres Program – Open Space and Recreation Plan Guidelines](#), the OSPR needs to be completed or updated and adopted as part of the local Master Plan within the last 10 years.

### **Why is it Important?**



Visitors to Cooper's Point Waterfront Park take in the view of the Delaware River, the iconic Benjamin Franklin Bridge and the Philadelphia skyline. ©2020/2021 by Cooper's Point Waterfront Park



# Drinking Water Actions

↑ BACK TO TOP	EXPAND ALL	COLLAPSE ALL
<b>Health &amp; Wellness</b>		
<u>Anti-Idling Education &amp; Enforcement Program</u>		
10 Points		
<u>Building Healthier Communities</u>		
5 Points		
* THIS ACTION HAS VARIABLE POINTS: 5, 10, 15, 20, 25 * COMPETITIVE FUNDING AVAILABLE		
<u>Health in All Policies Professional Development</u>		
10 Points		
<u>Private Well Outreach and Testing</u>		
10 Points		
* THIS ACTION HAS VARIABLE POINTS: 10, 15, 20, 25		
<u>Removing Lead in Drinking Water</u>		
10 Points		
* THIS ACTION HAS VARIABLE POINTS: 10, 30, 40		
<u>Safe Routes to School</u>		
10 Points		




# Green Infrastructure Planning and Implementation Actions

Rutgers | School of Environmental and Biological Sciences Search Rutgers

RUTGERS New Jersey Agricultural Experiment Station

**Water Resources Program**

- HOME PAGE
- About the Program
- Staff
- Projects & Programs
- Recent Presentations
- Water Pages
- Fact Sheets
- E-learning Tools
- Useful Links



Our green infrastructure initiative in urban centers practices before it enters the combined sewer system

RUTGERS New Jersey Agricultural Experiment Station

**Water Resources Program**

- HOME PAGE
- About the Program
- Staff
- Projects & Programs
- Recent Presentations
- Water Pages
- Fact Sheets
- E-learning Tools
- Useful Links

## ABOUT US

Rutgers Cooperative Extension  
Water Resources Program

G.H. Cook Campus  
14 College Farm Road  
New Brunswick, NJ 08901

www.water.rutgers.edu

- HOME PAGE
- About the Program
- Staff
- Projects & Programs
- Recent Presentations
- Water Pages
- Fact Sheets
- E-learning Tools
- Useful Links

## Projects & Programs

<b>Agricultural Watershed Planning &amp; Implementation</b>	<b>Municipal/Community Training</b>
<b>Green Infrastructure Program</b>	<b>Rain Gardens &amp; Rain Barrels</b>
<b>Keep the Rain from the Drain ~ Impervious Cover Reduction Program</b>	<b>Watershed Planning &amp; Implementation</b>
<b>Municipal Stormwater Management</b>	

### Agricultural Watershed Planning & Implementation

- Watershed Restoration & Protection Plan for Assiscunk Creek, Burlington County, NJ
- Biofilter Wetland at Harrow Run, Water Quality Evaluation of Pollutant Removal Efficiency from a Tailwater Recovery System
- Watershed Restoration Plan for the Upper Cohansey River Watershed
- Upper Cohansey River Watershed Agricultural Mini-Grant Program
- Watershed Restoration Plan for the Upper Salem River Watershed
- Upper Salem River Watershed Agricultural Mini-Grant Program

- HOME PAGE
- About the Program
- Staff
- Projects & Programs
- Recent Presentations
- Water Pages
- Fact Sheets
- E-learning Tools
- Useful Links

### Green Infrastructure Program

[Top of Page](#)

http://www.water.rutgers.edu/Projects/Projects.htm



Connect With Us





# Gold Star Standard in Water



**Complete Four Pre-requisite Actions:** Two required Actions: Water Story and Environmental Resource Inventory as well as selection of a “high impact” and an additional action.

**Prepare Navigational Path:** as part of the Water Story action, in which municipality identifies water issues and corresponding actions to advance improvements in water in the years ahead.

**Water Gold Star Certification:** Apply on the Gold Star portion of the website – four completed actions; navigational path and reviewed during standard municipal certification cycle, if approved gold star awarded for 3 years.



# Municipal Water Story



FROM THE FOLKS AT TRICITYNEWS

SERVING ASBURY PARK • ALLENHURST • INTERLAKEN • LOCH ARBOUR • OCEAN GROVE • WANAMASSA



Concerns about drinking water quality
Areas of repetitive flooding after heavy rain
Concerns about water supply
Urban flooding and pollution due to combined sewer overflow
Impaired surface water quality
Equity Issues related to public access to water

## ASBURY PARK

### ASBURY GETS HELP TO WRITE ITS "WATER STORY"

Like 29  
Tweet

NEW JERSEY AMERICAN WATER PROVIDING GRANT FOR TECHNICAL ASSISTANCE FOR RESILIENCY AND SUSTAINABILITY

By Asbury Park Sun

Sustainable Jersey today announced that the City of Asbury Park was selected to receive technical assistance, funded by New Jersey American Water, to complete a new Sustainable Jersey Action: Municipal Water Story.

"At New Jersey American Water, we work to protect the viability, integrity and resiliency of water supplies and water and wastewater infrastructure in our service areas that are vulnerable to droughts, floods and extreme weather events," said Mark McDonough, president of New Jersey American Water. "This work will

ADVERTISE WITH US

SUGGEST A STORY





~~Adopt a Complete Streets Policy~~  
~~Institute Complete Streets~~

**NEW & IMPROVED**

**Complete and Green Streets for All Policy**  
**Bicycle and/or Pedestrian Improvement Projects**

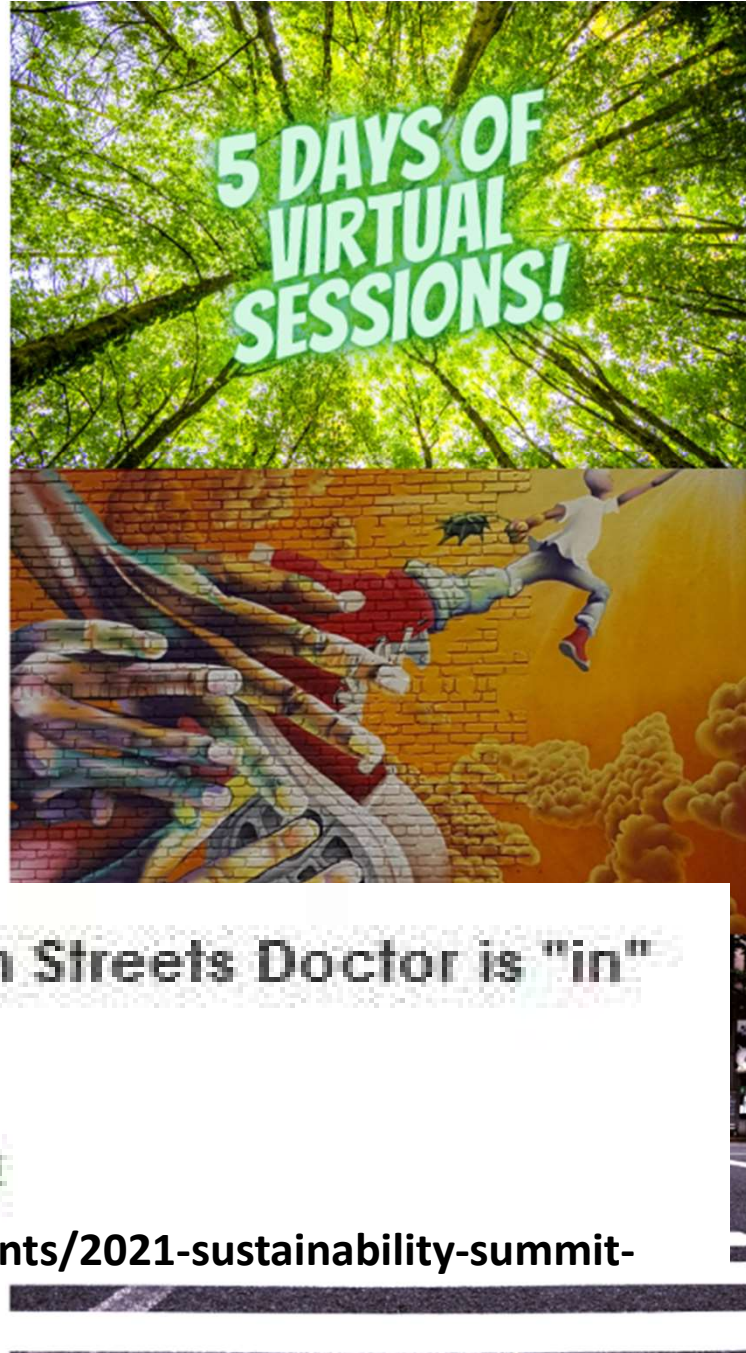
2021 NEW JERSEY

SUSTAINABILITY  
SUMMIT



MAY 17 - 21, 2021

# NEW JERSEY SUSTAINABILITY SUMMIT



The Complete & Green Streets Doctor is "in"

- [View Recording](#)
- [Download Presentation](#)

<https://www.sustainablejersey.com/events/2021-sustainability-summit-recordings/>





# Complete Streets Technical Assistance

<p><b>Bicycle Network Plan</b> Cranbury Township, Middlesex County, NJ January 2013</p>	<p><b>Naaman Williams Memorial Park Crime Prevention Through Environmental Design Audit and Site Assessment</b> Township of Franklin, Somerset County, NJ 2018</p>	<p><b>Bicycle Network Plan</b> Borough of Garwood, Union County, NJ 2018</p>	<p><b>Bicycle Network Plan</b> Borough of Manville, Somerset County, NJ 2018</p>
<p><b>Cranbury: Bicycle Network Plan (2020)</b></p>	<p><b>Franklin: Naaman Williams Memorial Park CPTED Safety Audit and Site Assessment (2020)</b></p>	<p><b>Garwood Bicycle Network Plan (2020)</b></p>	<p><b>Manville Bicycle Network Plan (2020)</b></p>
<p><b>Main Street Walkable Community Workshop</b> Borough of Bradley Beach, Monmouth County, NJ 2018</p>	<p><b>High Street to Madison Avenue Walkable Community Workshop</b> Borough of Dunellen, Middlesex County, NJ 2018</p>	<p><b>Prospect Avenue and Beech Street Walkable Community Workshop</b> City of Hackensack, Bergen County, NJ 2018</p>	<p><b>Washington Street, Main Street, and Franklin Avenue Walkable Community Workshop</b> Township of West Orange, Essex County, NJ 2018</p>
<p><b>Bradley Beach: Main Street Walkable Community Workshop (2020)</b></p>	<p><b>Dunellen: High Street to Madison Avenue Walkable Community Workshop (2020)</b></p>	<p><b>Hackensack: Prospect Avenue and Beech Street Walkable Community Workshop (2020)</b></p>	<p><b>West Orange: Washington St., Main St., &amp; Franklin Ave. Walkable Community Workshop (2020)</b></p>
<p><b>Bicycle Route Alternatives Between Overpeck County Park and the George Washington Bridge</b> Prepared for the Borough of Edison, Bergen County, NJ 2019</p>	<p><b>Complete Streets Conceptualization Report for Post Office Plaza</b> Township of Cranford, Union County, NJ 2019</p>	<p><b>Greenway Plan</b> Borough of Eatontown, Monmouth County, NJ 2019</p>	<p><b>Pedestrian Safety Demonstration Project</b> Borough of Middletown, Middlesex County, NJ 2019</p>
<p><b>Bicycle Route Alternatives Between Overpeck County Park and the GWB (2019)</b></p>	<p><b>Cranford Complete Streets Conceptualization Report for Post Office Plaza (2019)</b></p>	<p><b>Eatontown Greenway Plan (2019)</b></p>	<p><b>Middletown Pedestrian Safety Demonstration Project (2019)</b></p>





# Walkable Community Workshop

Dunellen  
2020

High Street to Madison Avenue  
Walkable Community Workshop  
Borough of Dunellen, Middlesex County, NJ  
2020





<https://www.sustainablejersey.com/grants/free-complete-streets-technical-assistance-services/>



# Coming Soon!



## Coming Soon! Apply for Free Complete Streets Technical Assistance Services

**COMPLETE STREETS** help improve safety for people walking and biking. They create better places to live, work, play and do business. They balance the needs of drivers, pedestrians, bicyclists, transit riders, emergency responders, and goods movement based on the local context.

Beginning December 6<sup>th</sup>, northern NJ municipalities located in Bergen, Essex, Hudson, Hunterdon, Middlesex, Monmouth, Morris, Ocean, Passaic, Somerset, Union and Warren counties can apply to receive free technical assistance services for one of the following project types to advance complete streets:

- **Bicycle Corridor or Network Plan:** To help identifying specific routes and road treatments to improve bicycling infrastructure.
- **Complete and Green Streets for All Policy:** To develop or update a Complete Streets Policy to align with the 2020 NJDOT Complete and Green Streets for All Policy.
- **Complete Streets Conceptual Rendering:** To prepare graphic renderings to help visualize potential improvements to streetscapes or public spaces.
- **Temporary Demonstration Project Guidance:** To provide guidance on the design and installation of one pedestrian safety or bicycle infrastructure temporary safety measure.
- **Walkable Community Workshop:** To conduct a workshop and audit of up to a half-mile of street to identify potential pedestrian and bicycle improvements.

Two webinars will help municipalities identify potential projects and apply to this technical assistance program offered by the North Jersey Transportation Planning Authority.

A project types webinar will be held on Thursday, December 9, 2021 from noon - 1:00pm. Join the webinar to learn more about the types of projects that can be completed through this program.

REGISTER: <https://bit.ly/3BPuN9x>

An application process webinar will be held on Wednesday, December 15, 2021 from noon - 1:00pm. Join the webinar to learn more about the program and how you can apply.

REGISTER: <https://bit.ly/3AQoJWo>

APPLICATIONS WILL BE AVAILABLE DECEMBER 6, 2021 AND ARE DUE FEBRUARY 11, 2022

MORE INFORMATION: <http://bit.ly/CompleteStreetsTA>





# Round 3 Complete Streets Technical Assistance Program

APPLICATIONS AVAILABLE: DECEMBER 6, 2021

APPLICATIONS DUE: FEBRUARY 11, 2022

## Two Webinars:



Project Types Webinar  
**Thursday, December 9, 2021**  
noon - 1:00pm



Contents	
Contents	1
Background	2
Access	3
Eligibility Requirements	3
Limitations on the Number of Application Submissions	3
Eligible Technical Assistance Projects	3
Online Application Portal	7
Creating an Account	8
Technical Assistance Form Sections	9
Section One: Applicant Information	10

Application Process Webinar  
**Wednesday, December 15, 2021**  
noon – 1:00pm





# Public Health

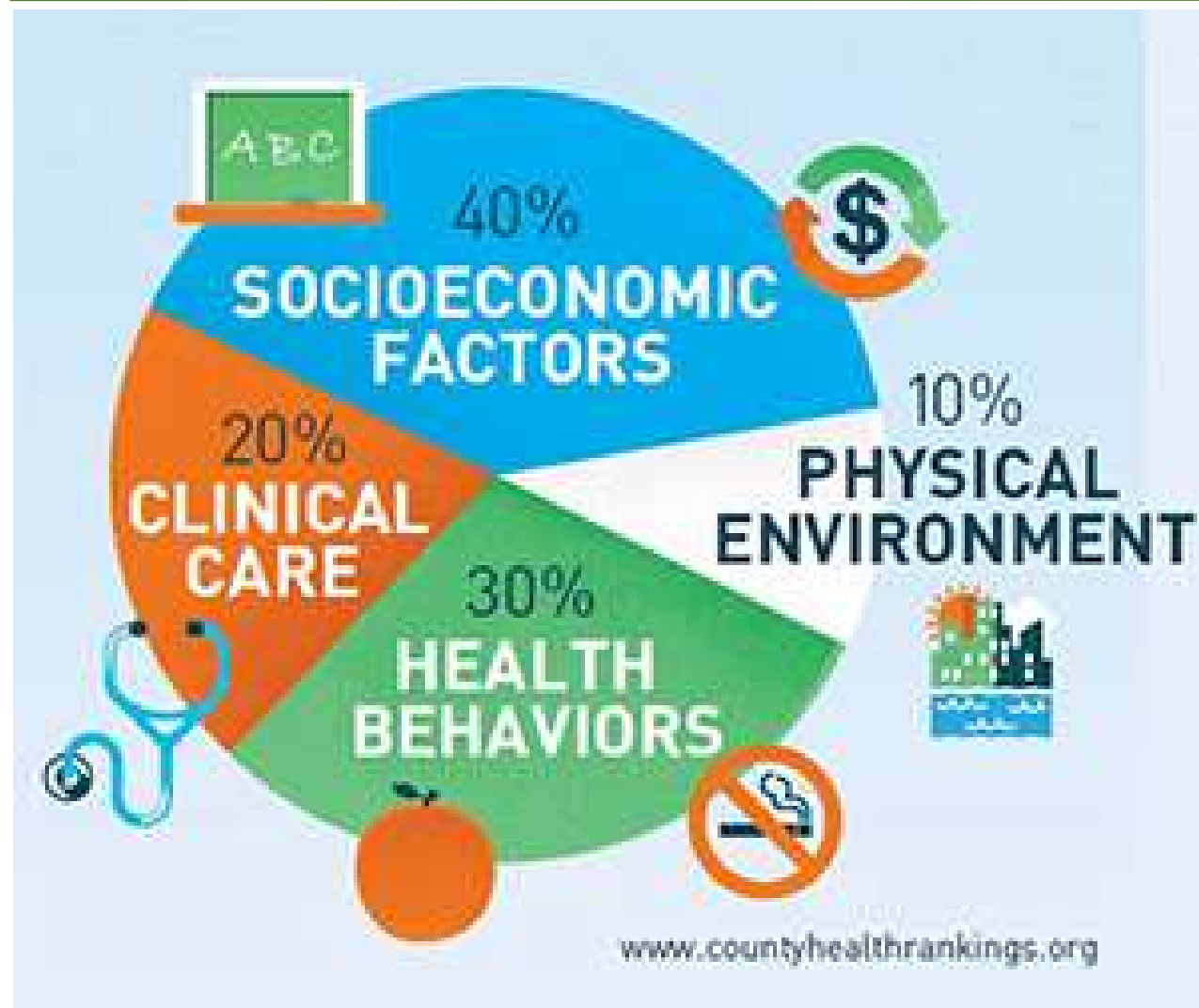
Lauren Skowronski

Program Director for Community Engagement





# “Upstream” Determinants of Health





# ★ Steps to Achieve Gold Star in Health

---

## STEP 1

Assess Community  
Health Needs  
& Create Plan

Complete LOCAL HEALTH  
ASSESSMENT & ACTION PLAN



# ★ Steps to Achieve Gold Star in Health

## STEP 2

Implement Strategies

\*Non-required actions must be drawn from at least 3 Health Gold categories

\*Non-Sustainable Jersey actions may also be submitted as "Innovative Projects" for consideration.

### TWO REQUIRED ACTIONS:

- 1) Best Practices for Local Boards of Health
- 2) Integrating Health in Municipal Decision-Making



At least **TWO 'HIGH IMPACT' ACTIONS**



At least **TWO ADDITIONAL ACTIONS**



# Building a Culture of Health

---



Integrating Health into  
Municipal Decision Making



Best Practices for  
Local Boards of Health



# Health: Food



Community Food Pantry/Bank  
and Soup Kitchen



Expanded Supplemental Food Programs



# Health: **Wellness**

---



Tobacco-Free Community



# Health: **Lead**

---



Healthy Homes Inspection & Training *(up to 30 pts)*



Lead & Housing Hazard Data-Sharing *(10 pts)*



Comprehensive Lead Strategy *(10 pts)*



Lead Education & Outreach Programs\* *(up to 15 pts)*



Lead Blood Screening Campaign *(up to 20 pts)*



**A Municipal Guide  
to a Lead-Safe Community**



Sustainablejersey.com  
=> Resources =>  
Publications



# Other Health Resources

---

## Technical Assistance

**WHAT:** completion of the Local Health Assessment & Action Plan

**WHO:** Pilot: 1 community

**WHEN:** Application launch: post New Year 2022

## Health Gold Webinar Series

Deep dive into new actions & HG framework

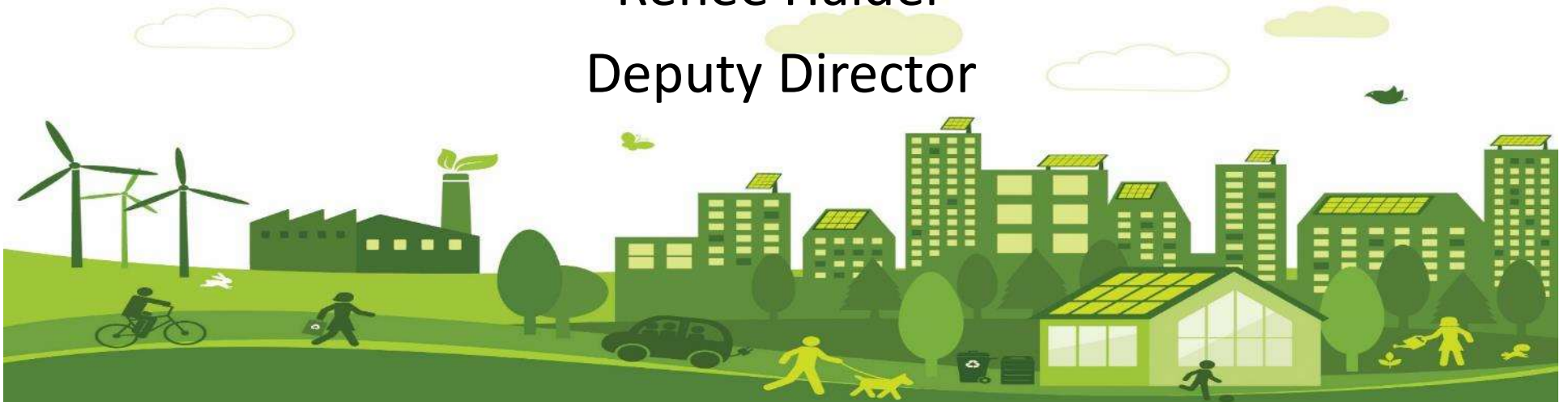
[sustainablejersey.com](https://sustainablejersey.com) > Resources > Presentations > Webinars





# Participating Communities Support

Renee Haider  
Deputy Director





# General Program Questions

---

- How to Register
- Certification Process
- Access to Application
- Updating Contact
- Action Related Questions
- Resource that can Help



**Samantha McGraw**



**Maureen Jones**

**info@sustainablejersey.com**

**609-771-2938**



## Search by:

- Status
- Action
- Gold Star
- County

## View:

- Contact
- Documentation

## Search Participating Municipalities & Approved Actions

Find green team contacts and learn how certified communities successfully completed Sustainable Jersey actions by using the search features below. You can filter by **certification status**, **action**, and **county**. For additional information about searching the map click [here](#).

460 Total Registered    224 Currently Certified    11,735 Actions Approved    1 Gold Star Awarded

MAP VIEW    LIST VIEW

### Filter This Map

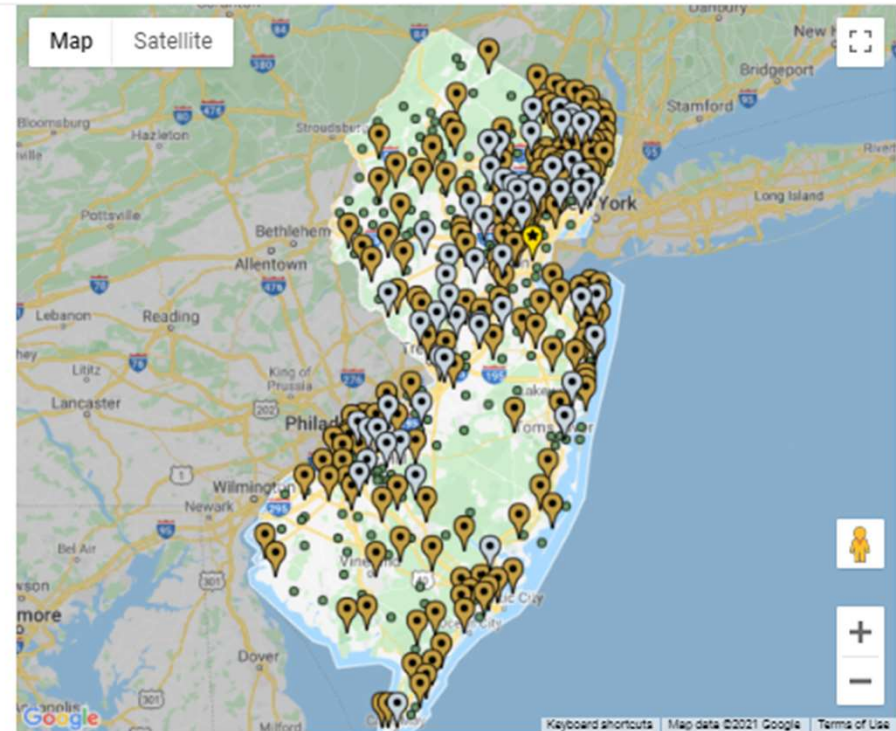
#### By Status

- Registered
- Bronze Certified
- Silver Certified
- Gold Stars Awarded
- Any Certified
- Any

Filter    Reset

#### By Certified Action

- [Animals in the Community](#)
- [Arts & Creative Culture](#)
- [Brownfields](#)
- [Community Partnership & Outreach](#)
- [Diversity & Equity](#)
- [Emergency Management & Resiliency](#)
- [Energy](#)
- [Food](#)
- [Green Design](#)
- [Health & Wellness](#)



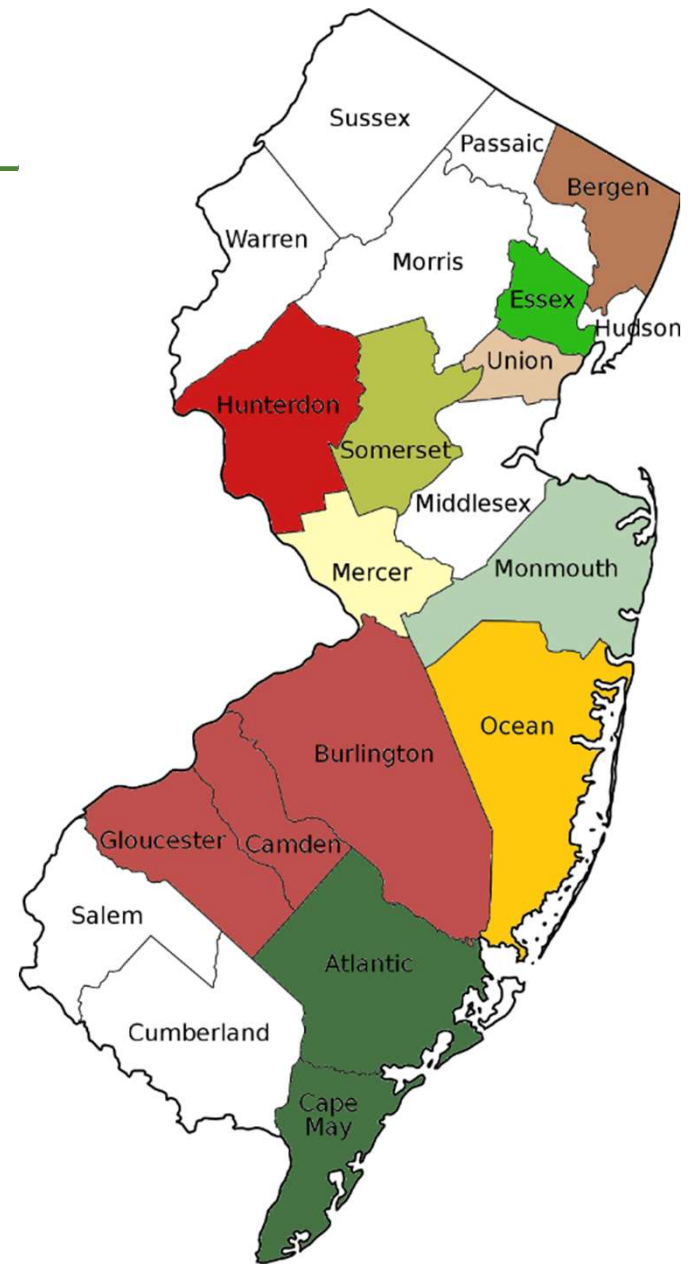
### Search Features

Use the **Filter** function to search for green team contacts and documentation submitted by certified municipalities for approved actions.



# Regional Hubs

- Atlantic-Cape May Hub
- Bergen Sustainability Hub
- Sustainable Essex Alliance
- Hunterdon Sustainability Team
- Monmouth County Hub
- Ocean County Hub
- Somerset Green Leadership Hub
- Tri-County Sustainability Alliance (Burlington/Camden/Gloucester)
- Union County Hub





# Regional Hubs

- Peer-to-peer networking
- Capacity building through collaboration
- Expert training and public events
- Statewide network of sustainability leaders





# Some Regional Hub Activities

---

- County-wide **energy efficiency outreach** campaigns (Mercer, Bergen)
- **Mentor matching** program for new and struggling green teams (Tri-County)
- County-wide **single-use plastics & polystyrene reduction** campaigns (Bergen, Atlantic-Cape May)
- Creation of new **Mullica River Watershed** (A-CM)
- Multi-town recycling education, stormwater management efforts, film screenings, Buy Fresh/Buy Local campaigns
- Cross hub collaborative public events



# Sustainable Jersey Grants Program



- Funding to support municipal and school sustainability projects
- Grants range from \$2,000 to \$50,000
- 2021 and 2022 cycles funded by:



An Exelon Company





# Grant Opportunities

---

## Annual Grant Cycles for Municipalities

Sponsor	Funding Announced	Application Deadline	Applicants Notified	Funding Dispersed
PSEG	Mid-November	Mid-February	early April	early May
ACE	Mid-April	Late June	Late August	Late September
Gardinier	Late August	Early November	Mid-January	Late January

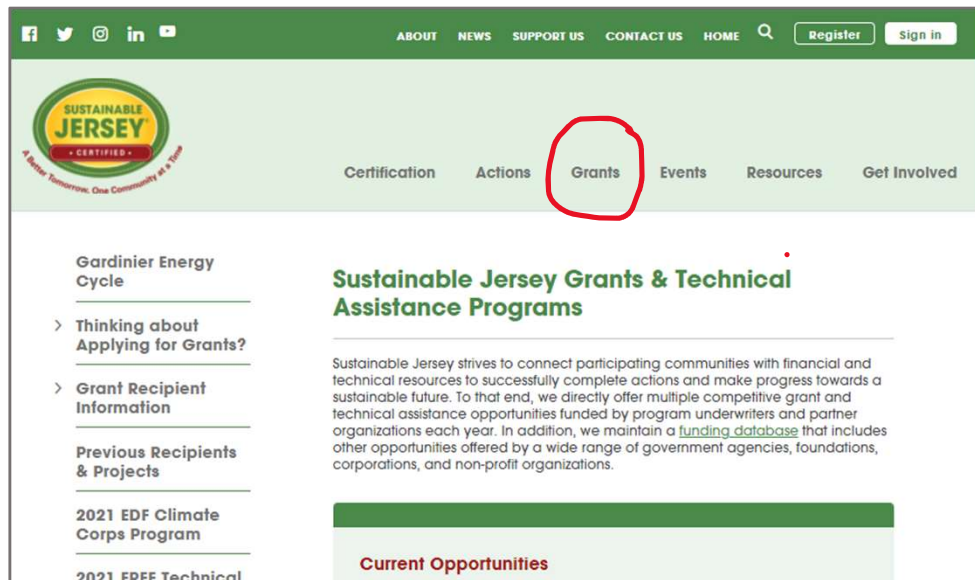
**\$6.7 million in grants**  
to municipalities and schools since 2009!

*\* Funding cycles are subject to change and an official announcement will be made when funding cycles become available*

# Sustainable Jersey Grants Program



- View available opportunities on our websites



[bit.ly/SJgrants](https://bit.ly/SJgrants)

- Sign up for our newsletters to stay informed .

Join The Sustainable Jersey Mailing List



# Just Announced

---

**2022 Cycle: Available Now!**  
**Apps Due February 11, 2022**

- \$200,000 in grants
- 20k, 10k, and 2k grants
- Action-related project
- General green team support (2k only)



**PSEG**  
*Foundation*



# Don't Miss Out

---

- Nearly 60% of Sustainable Jersey participating municipalities have received at least 1 grant
- The chances of being awarded a grant are good compared to most competitive grant opportunities
- Our new updated grants portal has streamlined the process
- At least 50% of the grant funds are designated for certified municipalities
- Unsuccessful in the past? Request a debrief for tips on how to improve your applications



# Grant Writing Tips

- Think outside the box
- Consider high need areas and marginalized populations
- Personalization – Why is this needed your community
- Community Engagement



Photo Credit: Manfred Saul





# Questions

---

- Visit **[bit.ly/MunicipalPSEGGGrants](https://bit.ly/MunicipalPSEGGGrants)** to learn more
- Register for the Informational Webinar 12/13
- Visit us at booth 103



*Questions about the grants program?*

**Kaitlyn Vollmer**

Grants Program Coordinator

[grants@sustainablejersey.com](mailto:grants@sustainablejersey.com)

609-771-3189



# Upcoming NJLM Sessions

---

- **Building Healthier Communities Through Municipal Action**  
Wednesday, 11/17, 10:45 am – Noon, Room 420
- **Making the Most of Solar in New Jersey**  
Wednesday, 11/17, 1:30 pm – 2:45 pm, Room 421
- **Municipal Action for Lead-Safe and Healthy Homes**  
Wednesday, 11/17, 3:30 pm – 4:45 pm, Room 420
- **State Plan & Sustainable Jersey - Good Planning Together**  
Thursday, 11/18, 9:00 am – 10:15 am, Room 420
- **Municipal Fleet Electrification**  
Thursday, 11/18 10:45 am – Noon, Room 421
- **Reducing Food Insecurity in Your Municipality**  
Thursday, 11/18 1:30 pm – 2:45 pm, Room 420



# Questions?



# Sustainable Jersey Supporters & Sponsors

## Program Underwriters



## Grants Program



## Corporate Sponsors

PLATINUM



GOLD



SILVER

