

2015 NEW JERSEY SUSTAINABILITY SUMMIT

JUNE 10, 2015
8:30 AM-4:00 PM

TCNJ 2000 PENNINGTON ROAD
EWING, NJ 08618

Where Is New Jersey Headed?

Most people see the benefits of having clean air, fresh water, alternative energy options, waterways filled with fish, garbage in its proper place, parks and open space and a healthy place to work, live and go to school. The big question is how do we achieve this as a state? With over 400 municipalities and 275 schools and districts participating in Sustainable Jersey, now is the time to ask big questions.

Sustainable Jersey has been engaged in a collaborative process to create a vision and track our progress in terms of practical goals with indicators that describe observable outcomes at the state level. Indicators help us recognize milestones on the road to sustainability: taking their readings provides a report card on performance. Building on the 2013 Sustainability Summit at Duke Farms and the feedback received, the objectives of the 2015 New Jersey Sustainability Summit are to:



- Establish a vision for the movement by releasing our Sustainable State of the State Report
- Share resources and strategies that can be implemented in municipalities and schools today
- Discuss new things that Sustainable Jersey can do to support progress

Participants will come away with a clear sense of the state of the movement, new ideas about what can be done to make progress, an expanded network of fellow practitioners, and the inspiration to go back and continue to drive change one municipality or school at a time.

A very special thanks to all of our sponsors who helped make this event possible.



SustainableJersey.com



PLENARY SPEAKERS

KEYNOTE SPEAKER SHELLEY POTICHA



As U.S. Director of the Department of Housing and Urban Development's Office of Sustainable Housing and Communities, Shelly Poticha had the difficult task of setting a vision for sustainability that

was flexible enough to guide federal action while respecting community differences. Former executive director of the Congress for the New Urbanism, a co-founder of LEED for Neighborhood Design, and currently head of Natural Resources Defense Council's Urban Solutions Program, Ms. Poticha will discuss the challenge of coordinating state and federal action in support of local sustainability and how to track progress.

SUSTAINABLE STATE OF THE STATE REPORT DR. MELANIE MCDERMOTT



Melanie McDermott is Senior Researcher for Sustainable Jersey. She is a former Associate Director of the Rutgers Climate and Society Initiative, and holds a PhD in Environmental Science,

Policy and Management from University of California at Berkeley. Dr. McDermott will present the results of Sustainable Jersey's two year initiative to define a vision for sustainability that can support and guide community action.

16 CONCURRENT SESSIONS

Discuss the Sustainable State of the State Report, share perspectives on Sustainable Jersey and dig deeper into the dimensions of sustainability. Experts and industry professionals will lead each session and review current challenges and lead a discussion that includes the audience on strategies for making progress. Choose two afternoon sessions from the wide range of offerings listed below. [Click here](#) for detailed session description.

Round 1

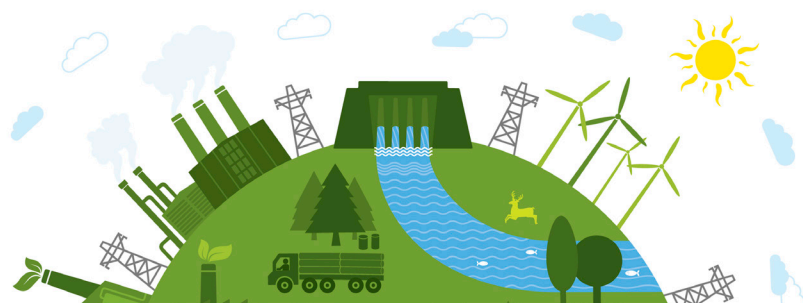
- Building a Culture of Health One Community at a Time
- Changing the Way Buildings and Communities are Designed, Built, and Operated
- Ecological Integrity: Risks and Responses
- How Arts and Creative Culture Contribute to Community Vibrancy and Economic Vitality
- Tools for a Sustainable Democracy
- Water for Our Future, Legacies from the Past
- Sustainable Jersey for Schools Listening Session
- Sustainable State of the State Feedback Session

Round 2

- Education: Sustainability, Skills and Enrichment
- Fostering Thriving and Sustainable Local Economies
- Getting to the Gold Standard in Materials Management after 28 Years of Mandatory Recycling
- Ready, Set, Adapt!
- Strategies and Tools to Support Efficient Development
- Transitioning to a More Sustainable Energy Framework
- Sustainable Jersey Municipal Program Listening Session
- Sustainable State of the State Feedback Session

NETWORKING

Network with others committed to fostering a sustainable New Jersey. The registration fee covers the cost of continental breakfast, lunch, and a late afternoon ice cream social.



REGISTRATION

Cost of Attendance:

\$35: State, county, municipal, non-profit or green team volunteers

\$75: All other attendees

[Register online](#) today!