



“Healthy, Green and Complete Streets for All”

2017 New Jersey League of Municipalities Conference
Thursday, November 16, 2017

Mayor Gayle Brill Mittler, Moderator

"Healthy, Green and Complete Streets for All"

Colin Driver, Director of Economic Development
Borough of Somerville

Ronda Urkowitz, PP, AICP, Program Director
Cross County Connection

Leigh Ann Von Hagen, Senior Research Manager
Alan M. Voorhees Transportation Center at Rutgers

Elise Bremer-Nei, Bicycle and Pedestrian Program Coordinator
New Jersey Department of Transportation

Kandyce Perry, Planning and Policy Associate
New Jersey Future



HIGHLAND PARK

NJ NEW JERSEY'S FIRST GREEN COMMUNITY



- Middlesex County, next to Rutgers University
- 1.9 square miles
- Diverse (30 languages spoken)
- Over 14,000 residents
- 4 Public Schools
- Walking town – Rt. 27 is Main St.
- NJ's First Green Community





Our Successes:

- Primary, Elementary Schools AND Borough - Gold NJ SRTS Recognition Program Recipients
- All public schools - Bronze certified with Sustainable Jersey for Schools
- Borough - Silver certified with Sustainable Jersey
- 2015 Complete Streets Excellence Award





More Successes:

- 2013 Complete Streets Policy
- Completed all active transportation actions for Sustainable Jersey & Sustainable Jersey for Schools
- First bikeability audit
- Borough & School District awarded 2014 & 2016 DOT SRTS infrastructure grants
- Partner with Rutgers Bike Share
- Active Safe Walking and Cycling Committee (SWACC)





Our Complete Streets:

Major renovations to Rt. 27:

- Street trees
- Rain gardens
- Corner living rooms (at intersections)
- Benches
- Plantings
- Lighting
- Sharrows



Rain garden



Corner living rooms



Trees
Plantings



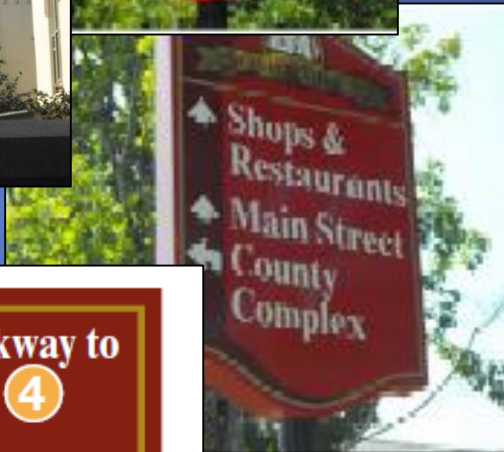
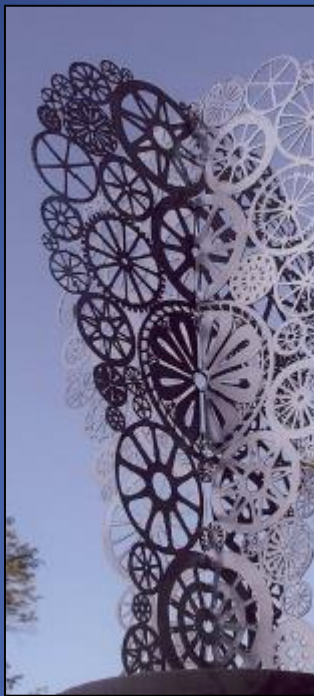
Sharrows

Somerville

Complete Streets

2017





The Borough of Somerville

- County Seat of Somerset County
- 2.2 square miles in area
- Population 12,400 +/-
- 3 public schools
- 2 parochial schools

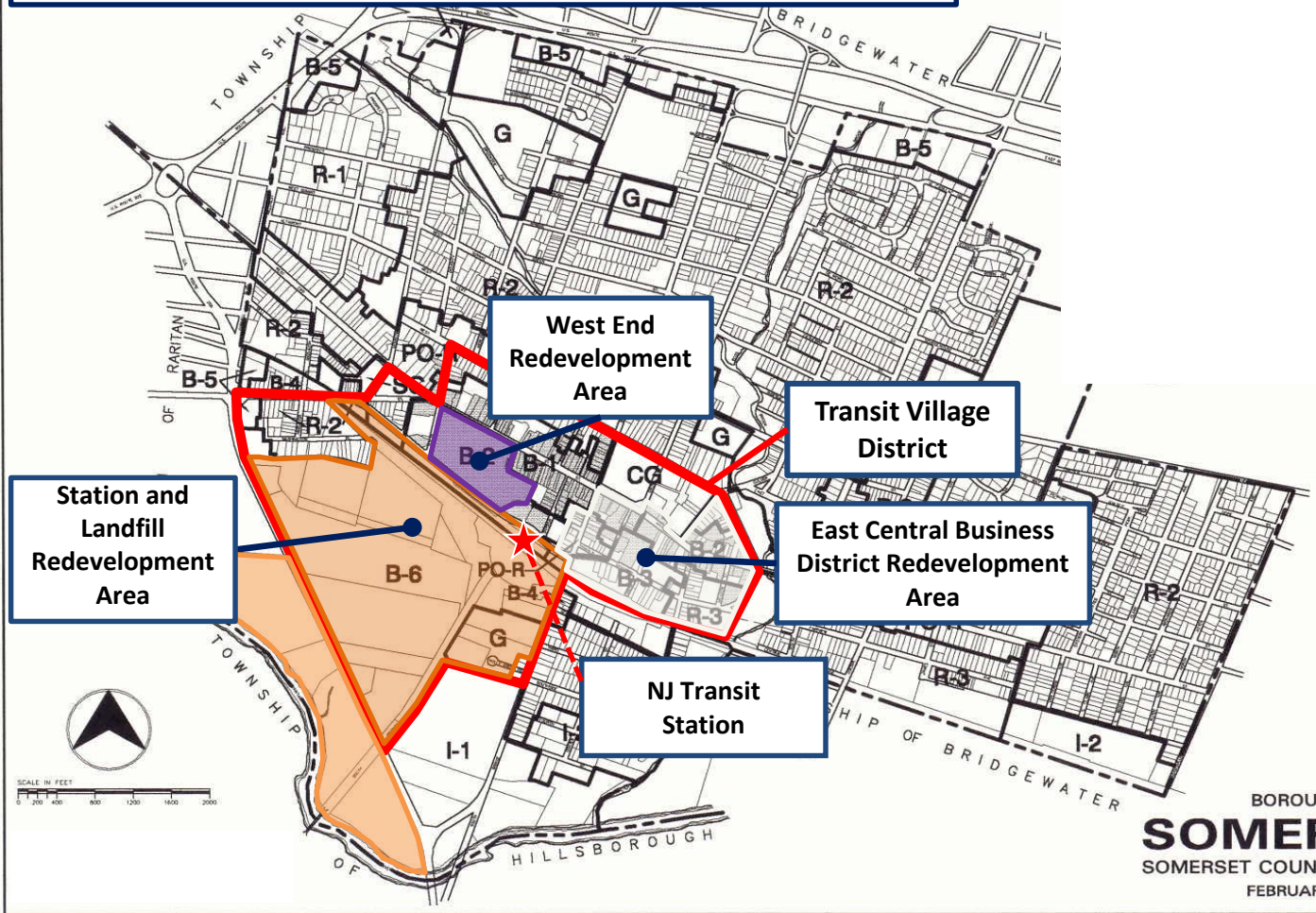
More Urban than Suburban

- Aggressive redevelopment – 3 redevelopments areas on Main Street
- Very busy Main Street
- Main Street (Downtown) is a destination
- Main Street is State Route 28

- Borough is on the NJT Raritan Valley Line – Station one block from Main
- Borough Downtown core Area is a designated Transit Village



Three RD Areas within Downtown Core & TV Boundary



BOROUGH OF
SOMERVILLE
SOMERSET COUNTY, NEW JERSEY
FEBRUARY, 2001



Borough Concerns

- Pedestrian Safety & Mobility
- Access to and from Downtown Core
- Access to new areas
- Vehicle Speed
- Parking
- Transit Access
- Bicycle Safety
- Traffic Flow in and around Core



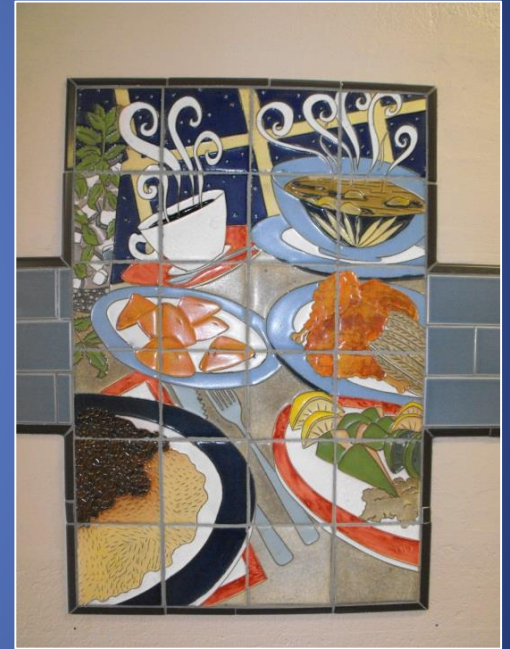
Transit



Transit



Transit



Making It All Work

- Planning
- Zoning
- Development

- Master Plan
- Redevelopment Plans
- Redevelopment Agreements

- Partnerships
- Cooperation
- Implementation
- Context



Complete Streets

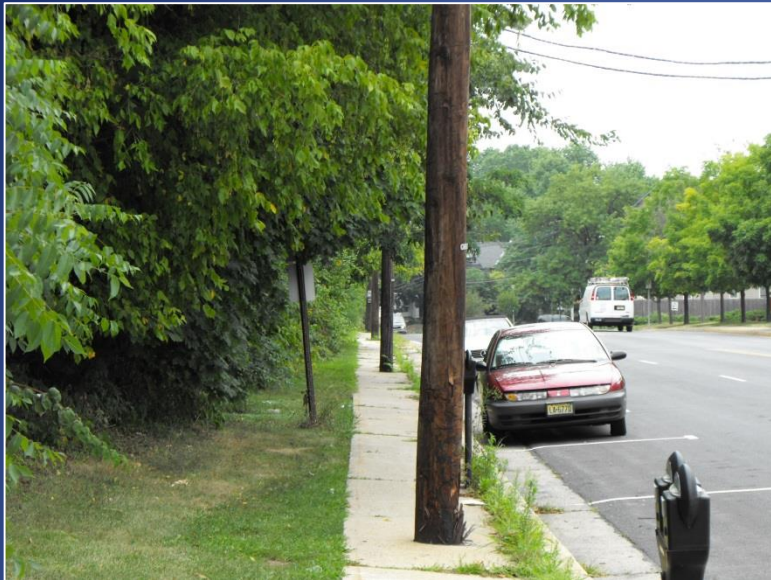
- The Borough Formed a Complete Streets Committee as part of the Sustainable Jersey “Green Team” program
- Follow the Sustainable Communities check list
- Formalized the Practices and policies in place
- Gives greater confidence when applying for grants that they will be reviewed favorably



Veterans Memorial Drive



Veterans Memorial Drive



Veterans Memorial Drive



Division Street



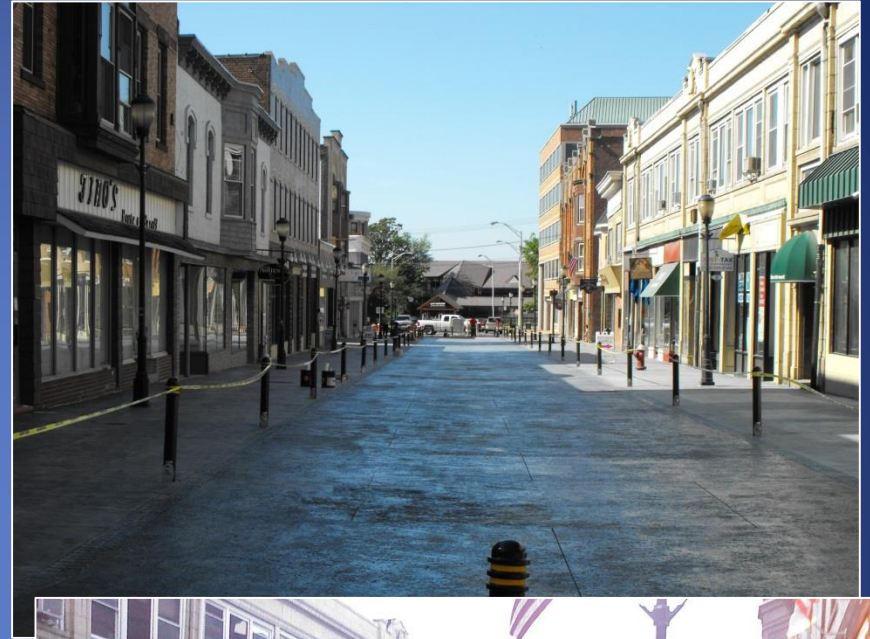
		Somerset County ENGINEERING DEPARTMENT		CONCEPT PLAN FOR SOMERVILLE TRANSIT VILLAGE 100'	
		DIVISION STREET LOCATED BETWEEN SOUTH STREET AND MAIN STREET (SR 26)		BOROUGH OF SOMERVILLE	
		SOMERVILLE MICHAEL J. AMOROSA PROFESSIONAL ENGINEER		NEW JERSEY BOROUGH ENGINEER N.J. LIC. No. 28912	
NO.	DATE	REVISION		DATE	



Division Street - 2009



Division Street - Today



Division Street - Today



Division Street



Main Street



Main Street



Main Street – Street Fair



Main Street – Friday Night Cruizers



Main Street – Jazz Fest



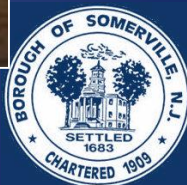
The Old



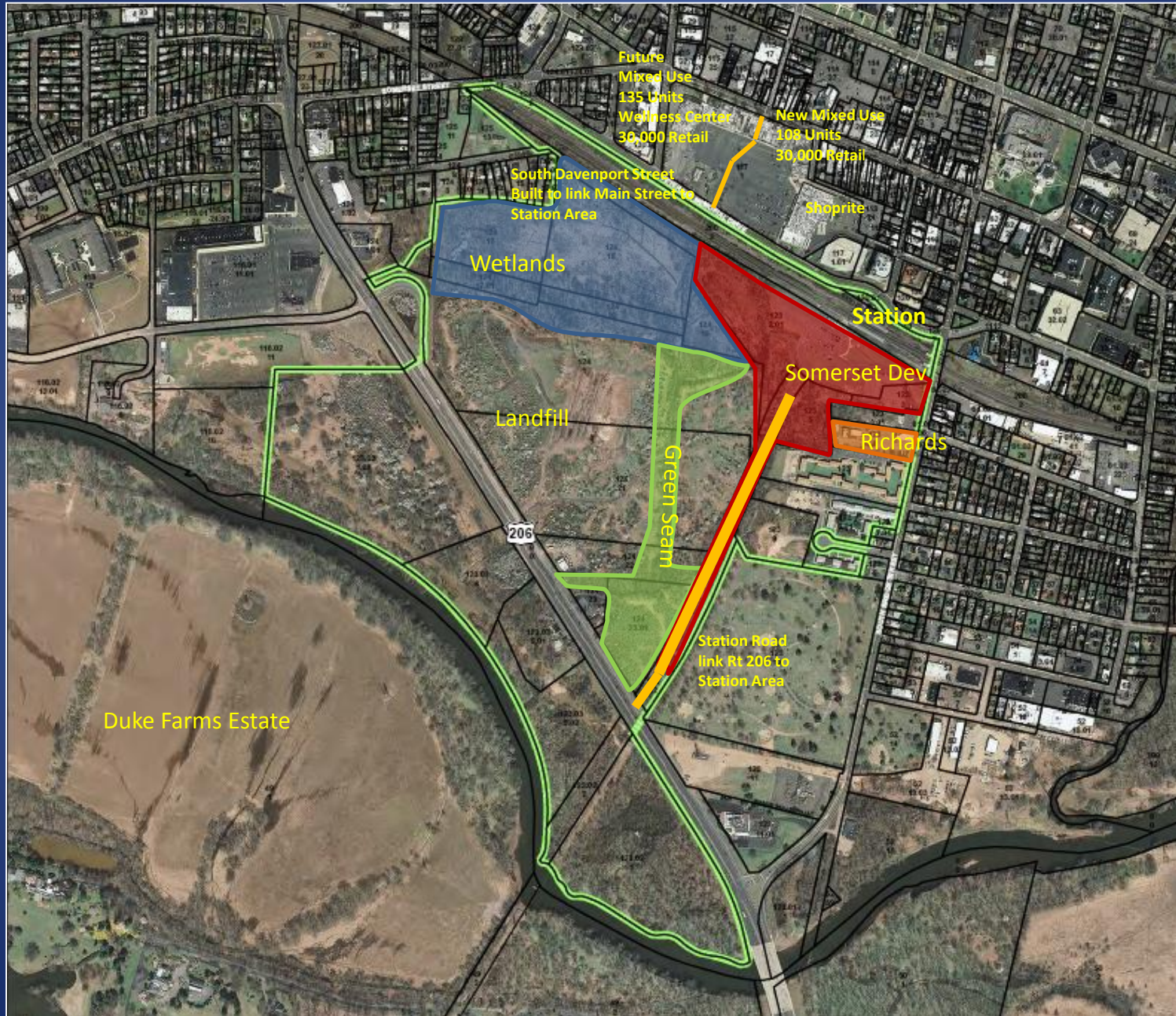
The New



Destinations



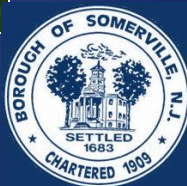
Landfill Redevelopment Area Elements



Future Circulation Plan



Around Town



Bikes and More Bikes



Somerville

It's A Sustainable Place



COMPLETE STREETS



Complete Streets: How to Adopt & Implement a Great Policy

*New Jersey State League of
Municipalities Conference*

November 16, 2017

*Ronda R. Urkowitz, P.P., AICP
Program Director
Cross County Connection TMA*



**CROSS
COUNTY
CONNECTION**

TRANSPORTATION MANAGEMENT ASSOCIATION

www.driveless.com
856-596-8228



COMPLETE STREETS



VOORHEES TOWNSHIP

- 🚲 Suburban community in Camden County
- 🚲 Population: 33,000
- 🚲 12 sq. mi.
- 🚲 Sustainable Jersey Certified Silver
- 🚲 25 points Complete Streets
 - 🚲 10 points policy
 - 🚲 10 points institutionalize
 - 🚲 5 points implementation project



**CROSS
COUNTY
CONNECTION**

TRANSPORTATION MANAGEMENT ASSOCIATION

www.driveless.com
856-596-8228



COMPLETE STREETS



MOTIVATORS TO ENGAGE DECISION MAKERS

Why Do It?

- 🚲 Safety Issues
- 🚲 Healthy Communities
- 🚲 Inclusiveness
- 🚲 Sustainable Jersey Certification
- 🚲 Avoid expensive retrofits
- 🚲 Economic development
- 🚲 Emissions reductions
- 🚲 Mitigate school bus costs
- 🚲 Grant applications
- 🚲 **It's the right thing to do**



**CROSS
COUNTY
CONNECTION**

TRANSPORTATION MANAGEMENT ASSOCIATION

www.driveless.com
856-596-8228



COMPLETE STREETS



FORM COMPLETE STREETS TECHNICAL ADVISORY COMMITTEE

Don't Go It Alone

- 🚲 Township Administrator /Manager
- 🚲 Elected official
- 🚲 Police Dept.
- 🚲 Engineering & Planning Depts.
- 🚲 Public Works Dept.
- 🚲 Engineering & planning consultants
- 🚲 Others (health/recreation)



Professional staff member should be lead

- 🚲 Liaison with governing body
- 🚲 Coordinate with all departments



**CROSS
COUNTY
CONNECTION**

TRANSPORTATION MANAGEMENT ASSOCIATION

www.driveless.com
856-596-8228



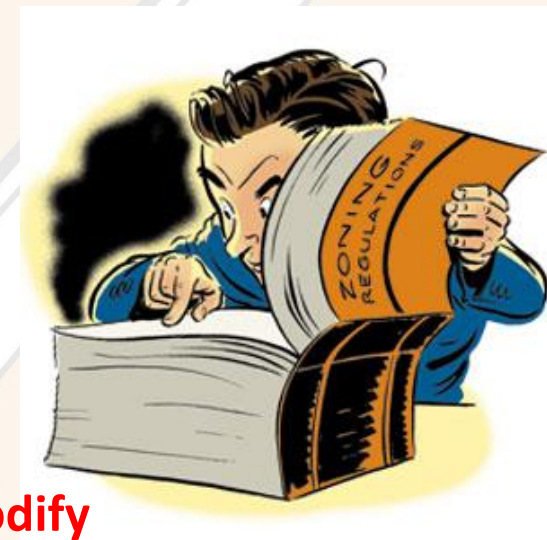
COMPLETE STREETS



STEPS TOWARD POLICY ADOPTION & IMPLEMENTATION

Review Planning/Technical Documents

- 🚲 Ordinances
- 🚲 Master Plan
- 🚲 Environmental plans
- 🚲 Open Space plans
- 🚲 Engineering studies
- 🚲 Others



As documents are updated, modify to comply with Complete Streets language, even if policy has not yet been adopted



COMPLETE STREETS



HEALTH LANGUAGE REQUIREMENT

Health Related Actions Already in Place

- 🚲 Smoke free/tobacco free policy all public buildings & outdoor space
- 🚲 Community parks pesticide free
- 🚲 Schools participate in SRTS program
- 🚲 Municipal vehicles refrain from idling
- 🚲 Existing bike/walking paths
- 🚲 Recreational facilities
- 🚲 Others



**CROSS
COUNTY
CONNECTION**

TRANSPORTATION MANAGEMENT ASSOCIATION

www.driveless.com
856-596-8228







COMPLETE STREETS

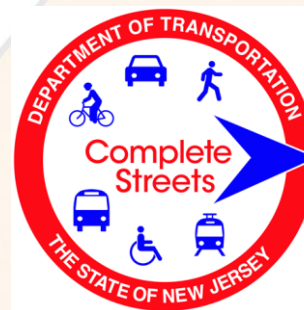


DEVELOP INTERNAL REVIEW PROCEDURES

Adopt a Project Review Checklist

-  NJDOT checklist good model to start with. Customize to meet needs.
-  Project manager completes
-  Technical Advisory Committee members review
-  Establish review timeline

Items to be Addressed	Checklist Consideration	YES	NO	N/A	Required Description
Existing Bicycle, Pedestrian and Transit Accommodations	Are there accommodations for bicyclists, pedestrians (including ADA compliance) and transit users included on or crossing the current facility? Examples include (but are not limited to): Sidewalks, public seating, bike racks, and transit shelters	<input type="checkbox"/>	<input type="checkbox"/>	<input type="checkbox"/>	



COMPLETE STREETS



HAVE THE ANSWERS

Anticipate questions/stumbling blocks

- 🚲 How will review process work?
- 🚲 What are the review guidelines requirements?
- 🚲 Who responsible for review?
- 🚲 What is review timeline?
- 🚲 Will review process delay approvals?



**CROSS
COUNTY
CONNECTION**

TRANSPORTATION MANAGEMENT ASSOCIATION

www.driveless.com
856-596-8228



COMPLETE STREETS




HOLISTIC APPROACH to TRANSPORTATION NETWORK

Voorhees has 5-Year Road Plan

Engineer has ranked every road in terms of:

-  **Walkability**
-  **Bikeability**
-  **ADA Compliance**
-  **Signage**

Coordinate with County

-  When County road improvements planned, consider sidewalks, bike lanes, signage, transit...

Avoid Expensive Retrofits



**CROSS
COUNTY
CONNECTION**

TRANSPORTATION MANAGEMENT ASSOCIATION

www.driveless.com
856-596-8228



COMPLETE STREETS



EASY IMPLEMENTATION PROJECTS

Resurfacing Project: Laurel Oak Rd

- Connects county road with neighborhood
- Passes high school where existing off road bike path starts
- Safety concerns—wide road, blind curve, student drivers, bicyclists

Results

- Bike Lanes
- Crosswalks
- Signage
- Speed Bumps

Outcomes

- Reduced speeds
- Dedicated travel lane for bicyclists
- Better visibility of pedestrians and bicyclists
- Improved motorist awareness



Avoid Expensive Retrofits



**CROSS
COUNTY
CONNECTION**

TRANSPORTATION MANAGEMENT ASSOCIATION

www.driveless.com
856-596-8228



COMPLETE STREETS



LEVERAGE COMPETITIVE FUNDING

FORM PARTNERSHIPS

- 🚲 Municipal & County partnerships
- 🚲 Partner with neighboring municipalities
- 🚲 Develop relationships between local government & community groups (ex: Green Teams, bike advocates, environmental groups ...)
- 🚲 Shift improvement costs to developers



COMPLETE STREETS



LOCAL RESOURCES

No Need to Reinvent the Wheel!

- 🚲 TMAs (a TMA covers every county)
TMACouncil.org
- 🚲 Sustainable Jersey
SustainableJersey.com
- 🚲 NJ Bicycle and Pedestrian Resource Center
NJBikePed.org
- 🚲 Planning & Engineering professionals
- 🚲 Review complete streets policies of similar towns



NJ BICYCLE & PEDESTRIAN RESOURCE CENTER
Educate. Encourage. Empower.











COMPLETE STREETS

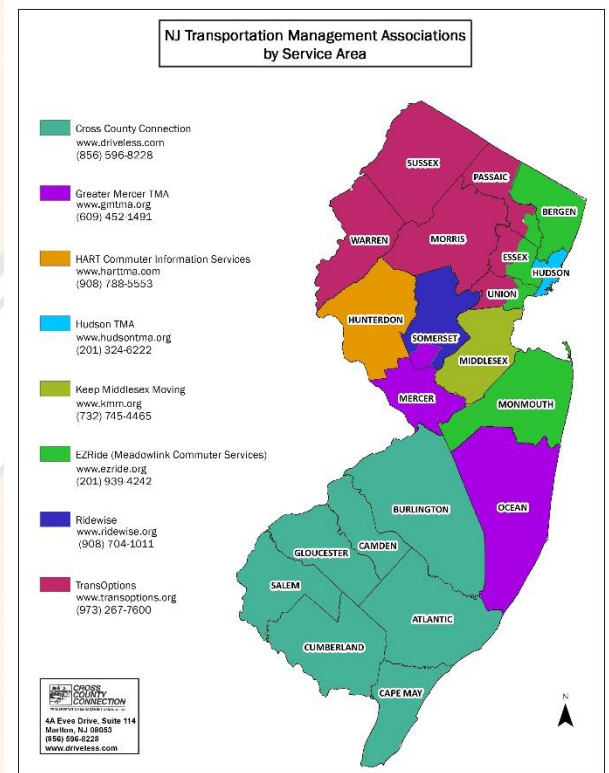


Transportation Management Associations

TMA Technical Assistance:

-  Bike/ped planning
-  Transit assistance
-  Shuttle services
-  SRTS assistance
-  Sustainable Jersey assistance
-  Grant writing assistance
-  Liaison with state, local, county & regional entities
-  Facilitate dialogue

TMACouncil.org



COMPLETE STREETS



**ADVICE FROM THOSE
WITH POLICIES**

DON'T BE AFRAID TO DO IT!

Chances are your town is already practicing some complete streets practices. You just need to formalize existing actions.



**CROSS
COUNTY
CONNECTION**

TRANSPORTATION MANAGEMENT ASSOCIATION

www.driveless.com
856-596-8228



COMPLETE STREETS



Thank you!

Ronda R. Urkowitz, P.P., AICP

Program Director

Cross County Connection TMA

4A Eves Drive, Suite 114

Marlton, NJ 08053

856-596-8228

Urkowitz@driveless.com



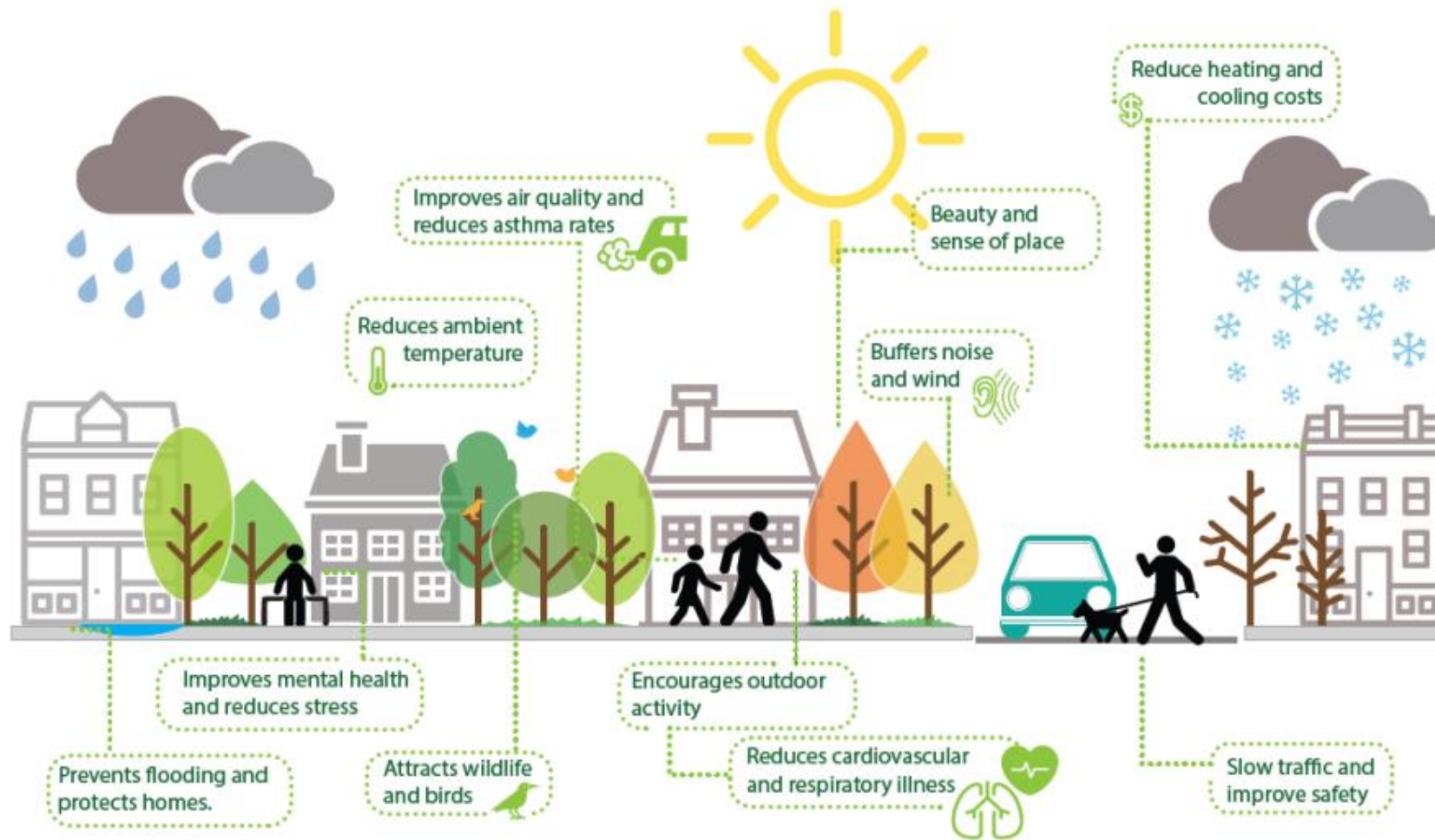
**CROSS
COUNTY
CONNECTION**

TRANSPORTATION MANAGEMENT ASSOCIATION

www.driveless.com

856-596-8228





COMPLETE STREETS: SAFE, HEALTHY AND GREEN STREETS FOR ALL



What are Complete Streets?

- ❖ Complete Streets are streets for everyone, no matter who they are or how they travel.

Complete Streets Policies

- ❖ Ensure that the entire right-of-way is planned, designed, constructed, operated, and maintained to provide safe access for all users.

Development of Social Capital and Community networking



Clinton, NJ



South Orange, NJ



Edward J. Bloustein School of Planning and Public Policy





Sustainable Jersey & Complete Streets

- ❖ Municipalities applying for certification or recertification in 2017 and beyond will must apply under the **new actions** for points related to Complete Streets.
- ❖ Adopt Complete Streets – 10 points
 - New Health Language
- ❖ Institute Complete Streets - 10 points
 - Implementation project –5 point bonus

<p>Viable transportation for vulnerable & transit reliant communities</p>	
<p>Netcong, NJ</p>	<p>Dover, NJ</p>
<p>Connections to trails & parks</p>	<p>Access to transit</p>
<p>Sussex Branch Trail, NJ</p>	<p>Hoboken, NJ</p>



Edward J. Bloustein School of Planning and Public Policy



www.saferoutesnj.org



Hoboken, NJ



Chesterfield, NJ



Madison, NJ



New Brunswick, NJ



Garfield, NJ

SUSTAINABLE JERSEY ACTION

Adopt a Complete Streets Policy - 10 points



Adopt a Complete Streets Policy – Requirements

- ❖ The governing body must adopt a complete streets policy by resolution or ordinance.
- ❖ The resolution must reflect **all** of the items listed below to earn **10 points**:
 1. State an intent to plan, design, build & maintain all roads to meet the needs of all users.
 2. Specify that “all users” include pedestrians, bicyclists, transit & motorists of all ages & abilities.
 3. Commit to create a comprehensive, integrated, connected multi-modal transportation network within the community.
 4. Recognize the need for flexibility in that all streets are different; user needs must be balanced & fit into the context of the community.
 5. Apply to both new & retrofitted projects.



Adopt a Complete Streets Policy – Resolution Requirements (continued)

6. Include the following **8 statements** which acknowledge the potential benefits of complete streets:
“Whereas, complete streets have the potential for improving physical & mental health either directly or indirectly in the following ways:
 - 1) Incorporating physical activity into our daily lives by increasing pedestrian activity & bicycle use
 - 2) Reducing rates of several chronic diseases related to increases in physical activity from walking & bicycling. Key impacted diseases include diabetes, heart disease, depression, & cancer
 - 3) Reducing rates of injury & death from decreased traffic crashes & improved safety for all users
 - 4) Reducing rates of asthma & other respiratory issues due to improved air quality through emissions reductions & vegetative air filtration



Adopt a Complete Streets Policy – Resolution Requirements (continued)

6. Include the following language which acknowledge the potential benefits of complete streets (cont.):
 - 5) Multiplying health & wellness benefits resulting from improved access to necessary amenities for vulnerable populations
 - 6) Reducing risk of illnesses related to water-borne pathogens from improved storm water infiltration
 - 7) Increasing the sense of social connectivity & sense of community belonging
 - 8) Improving aesthetics through decorative & functional vegetation
7. The implementation section of the policy must articulate the intent of the community to consider public health during planning & design program phases.



Quick tips - Adopt a Complete Streets Policy

- ❖ Submit documentation that your policy was distributed to all municipal departments.
- ❖ Must include health language.
- ❖ Create a Complete Streets workgroup that includes public health professional(s).
- ❖ If the policy is more than 3 years old, be sure to update and re-adopt with new language using the Sustainable Jersey action.
- ❖ Sample policies can be found on the NJ Bicycle and Pedestrian Resource Center website (njbikeped.org), however **not all policies listed meet SJ requirements.**



Quick tips - Maintenance

- ❖ Points will not be awarded if maintenance is excluded
 - ❖ Snow/Leaf Removal
 - ❖ Resurfacing
 - ❖ Accommodations during construction

- ❖ **NEW MODEL POLICY**





Madison, NJ



Haddonfield, NJ



South Orange, NJ



New Providence, NJ



Hoboken, NJ

SUSTAINABLE JERSEY ACTION

Institute Complete Streets - 10 Points



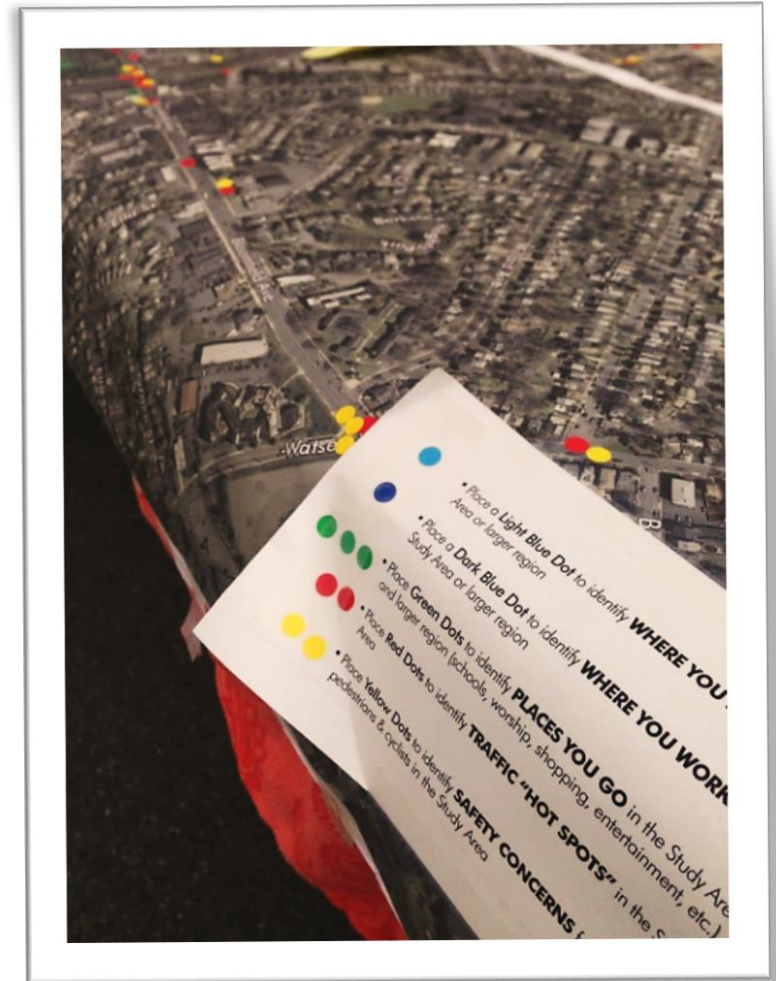
Institute Complete Streets Action

- ❖ New in 2016
- ❖ Adopt a Complete Streets action is a pre-requisite.
***but can be submitted at the same time.



Institute Complete Streets - Requirements

1. Build Your Complete Streets Team
 - Include public health professional(s)
2. Establish Internal Review Procedures
 - Adopt checklists to be used to ensure projects adhere to the Complete Streets policy





Institute Complete Streets - Requirements

(continued)

3. Attend training

- ❖ Training should be provided to elected officials, municipal employees, including engineers, public works employees, public health professionals, & planning & zoning officials
- ❖ Possible activities include webinars, conferences, & workshops (internal or by outside experts)

4. Inventory & review of planning & design documents

- ❖ Conduct an audit of guidance documents to ensure consistency with the Complete Streets policy





Institute Complete Streets – Additional Points

Implement a Complete Streets Project – **optional for an additional 5 points**

- ❖ A narrative description along with pictures of the project explaining how it advances the Complete Streets policy.
- ❖ Eligible projects must have been completed within 3 years prior to the submission of the action.



Edward J. Bloustein School
of Planning and Public Policy



www.saferoutesnj.org



Quick tips - Institute Complete Streets

- ❖ Municipal staff and/or consultants must be involved in the planning and implementation of the Complete Streets policy.
- ❖ Provide at least the minimum requirements for the checklists. NJDOT checklists meet requirements.



RUTGERS

Edward J. Bloustein School
of Planning and Public Policy



Tutorials



SUSTAINABLE JERSEY ACTIONS MAKING COMMUNITIES WALKABLE AND BIKEABLE

Action Tutorials are now available online!

Tutorials providing guidance on how to achieve points by implementing actions under the Sustainable Jersey program to make communities more walkable and bikeable are now available online.

Implementing some of these actions also meets requirements toward certification in the NJ Safe Routes to School Recognition Program.

For more information, please visit:
saferoutesnj.org/SustainableJerseyActions



ADOPT A COMPLETE
STREETS POLICY

INSTITUTE
COMPLETE STREETS

BICYCLE AND
PEDESTRIAN PLAN
AND AUDIT

SAFE ROUTES
TO SCHOOL

ANTI-IDLING
ENFORCEMENT
PLAN



Contact us at
srts@ejb.rutgers.edu
842-932-7901



SUSTAINABLE JERSEY FOR SCHOOLS ACTIONS ENCOURAGING SCHOOLS TO GO GREEN & CONSERVE RESOURCES

Action Tutorials are now available online!

Schools that want to go green and conserve resources can achieve points under the Sustainable Jersey for Schools program by encouraging students to walk and bike instead of driving. Tutorials on these actions are available online to provide guidance on how to implement the actions.

Implementing some of these actions also meets requirements toward certification in the NJ Safe Routes to School Recognition Program.

For more information, please visit:
saferoutesnj.org/SustainableJerseyActions



SAFE ROUTES TO
SCHOOL DISTRICT
POLICY

PEDESTRIAN AND
BICYCLE SAFETY
AND PROMOTION
INITIATIVES

SCHOOL TRAVEL
PLAN FOR
WALKING AND
BIKING

ANTI - IDLING
EDUCATION AND
ENFORCEMENT



Contact us at
srts@ejb.rutgers.edu
or
848-932-7901

saferoutesnj.org/SustainableJerseyActions



Funding Opportunities

NJ Department of Transportation Grants for Active Transportation:
saferoutesnj.org/funding

Federal Funding:

1. Safe Routes to School grants:

- Infrastructure improvements within 2 miles of K-8 school(s)
- Examples include sidewalks, bike facilities, traffic calming, etc.

2. Transportation Alternatives Program (TAP):

- Community-based, local level, non-traditional surface transportation projects
- Examples include design/construction of on and off road pedestrian and bike trails, conversion of abandoned RR for trails for bikes pedestrians, streetscaping etc.



Edward J. Bloustein School
of Planning and Public Policy



www.saferoutesnj.org



Funding Opportunities

NJDOT Grants for Active Transportation: saferoutesnj.org/funding

State Funding:

1. **Municipal Aid** – latest NJDOT press release stated additional points given to municipalities with Complete Streets
2. **Transit Village**
3. **Bikeways**
4. **Safe Streets to Transit**

Other NJDOT Programs:

Bike/Pedestrian Planning Assistance – on-call consultants can assist with projects including bike and pedestrian circulation studies, pedestrian safety assessments, bikeway plans, etc.



Edward J. Bloustein School
of Planning and Public Policy



www.saferoutesnj.org



Funding Opportunities

Sustainable Jersey: SustainableJersey.com/grants-resources

- Small grants program for municipalities and schools
- Capacity building and large grants available
- Funds can be used to complete active transportation actions
- Tips for applying:
 - “Sell the project” – What is the problem? Goal? How does it fit in the big picture?
 - Implementation – Be thorough
 - Include representatives from major stakeholders
 - Quality vs Quantity



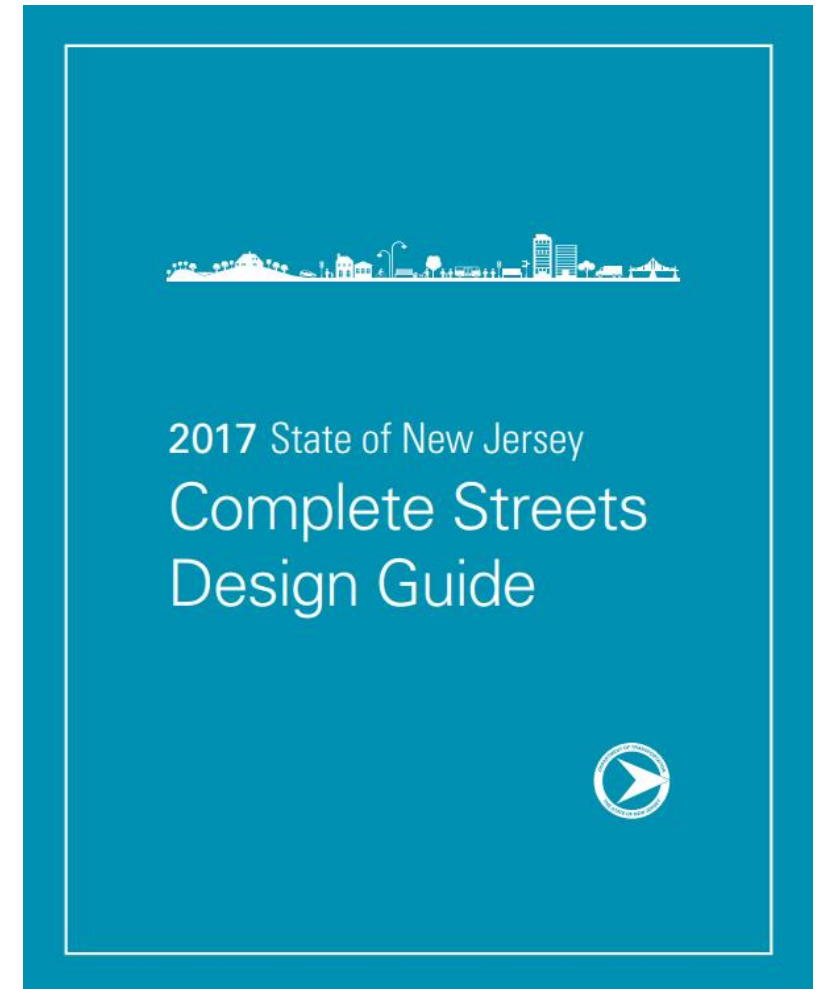


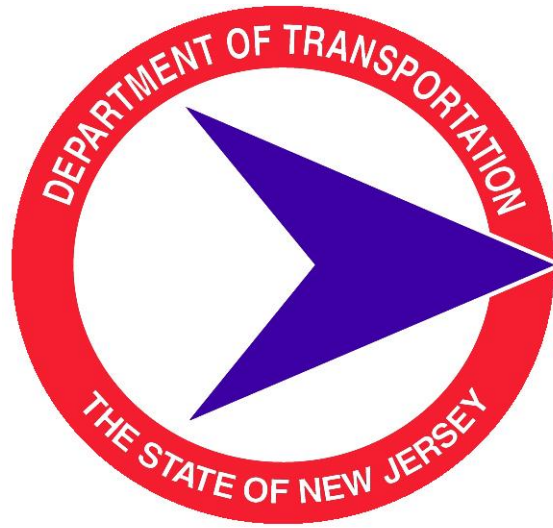
Implementation

NJDOT Resources

1. New Jersey Complete Streets Design Guide
2. Making Complete Streets A Reality: A Guide to Policy Development
3. A Guide to Creating a Complete Streets Implementation Plan

<http://www.state.nj.us/transportation/eng/completestreets/resources.shtm>





saferoutesnj.org
njbikeped.org

NJ Department of Transportation

Office of Bicycle and Pedestrian Programs

Elise Bremer-Nei, AICP, PP

Bicycle and Pedestrian Coordinator
elise.bremer-nei@dot.nj.gov
609-530-2765

NJ Safe Routes to School Resource Center

Rutgers University – Voorhees Transportation Center

Sustainable Jersey & Sustainable Jersey for Schools Help Desk

Leigh Ann Von Hagen, AICP, PP
lavh@ejb.rutgers.edu
848-932-2854

Trish Sanchez
trish.Sanchez@ejb.Rutgers.edu
848-932-2376



Edward J. Bloustein School
of Planning and Public Policy



www.saferoutesnj.org



GREEN and Complete Streets:

The Power of Green Stormwater Infrastructure in Street Design

New Jersey League of Municipalities Conference

Thursday, November 16, 2017



Kandyce Perry,
New Jersey Future





NEW JERSEY



FUTURE



**SMART GROWTH RESEARCH, POLICY,
ADVOCACY, AND ASSISTANCE**

New Jersey Future's Focus on Water

JERSEY WATER WORKS

A collaborative effort working to transform New Jersey's inadequate water infrastructure through sustainable, cost-effective solutions that provide communities with clean water and waterways; healthier, safer neighborhoods; local jobs; flood and climate resilience; and economic growth.

MAINSTREAMING GREEN INFRASTRUCTURE

A program to make green infrastructure the first choice for stormwater management in New Jersey.



Pilot Towns



Developers



Demonstration
Projects



State
Agencies



A street for cars



A street for people

An aerial photograph of a city street scene. On the left is a tall brick apartment building. In the foreground, there's a paved area with yellow chairs and tables, and a path with 'PED TO YIELD' markings. A red semi-transparent overlay covers the middle of the image, containing white text. In the background, there are trees and a suspension bridge (the Manhattan Bridge).

A street for cars,
people, and water

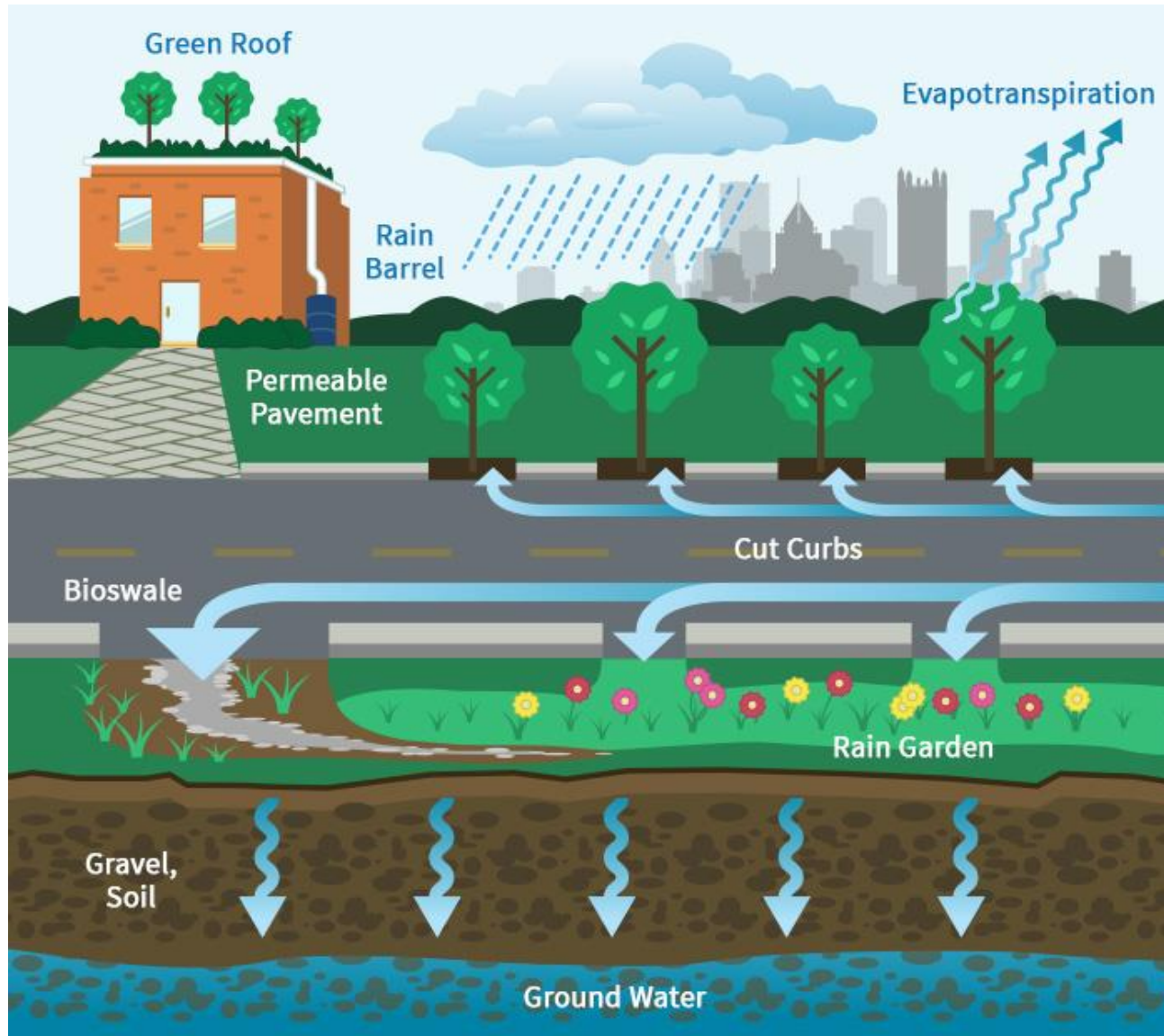
What is a Green Street?

A green street is a stormwater management approach that incorporates vegetation (perennials, shrubs, trees), soil, and engineered systems (e.g., permeable pavements) to slow, filter, and cleanse stormwater runoff from impervious surfaces (e.g., streets, sidewalks). Green streets are designed to capture rainwater at its source, where rain falls. Whereas, a traditional street is designed to direct stormwater runoff from impervious surfaces into storm sewer systems (gutters, drains, pipes) that discharge directly into surface waters, rivers, and streams.

Source: EPA



Wait...What is green infrastructure?

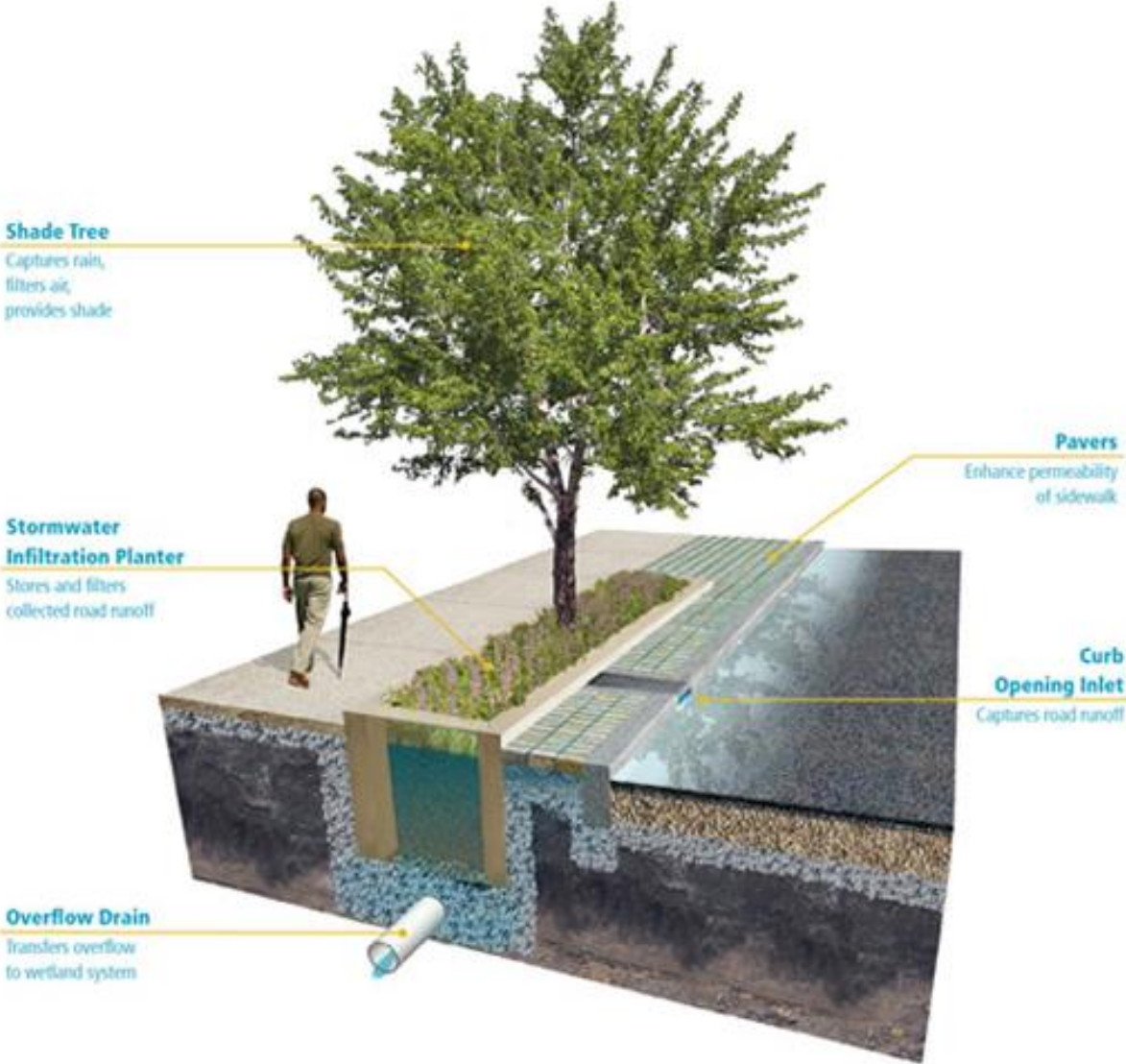


An approach to managing stormwater by either enabling it to infiltrate into the ground where it falls or by capturing it for later reuse.

Green Street Practices:

- Stormwater tree trenches
- Curb bump outs
- Permeable Pavement

How does it work?



Source: Philadelphia Water Department

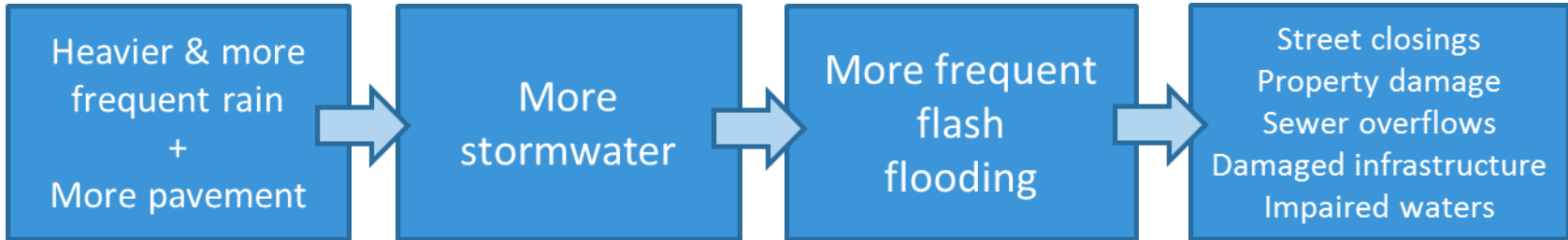


Anatomy of a Green Street

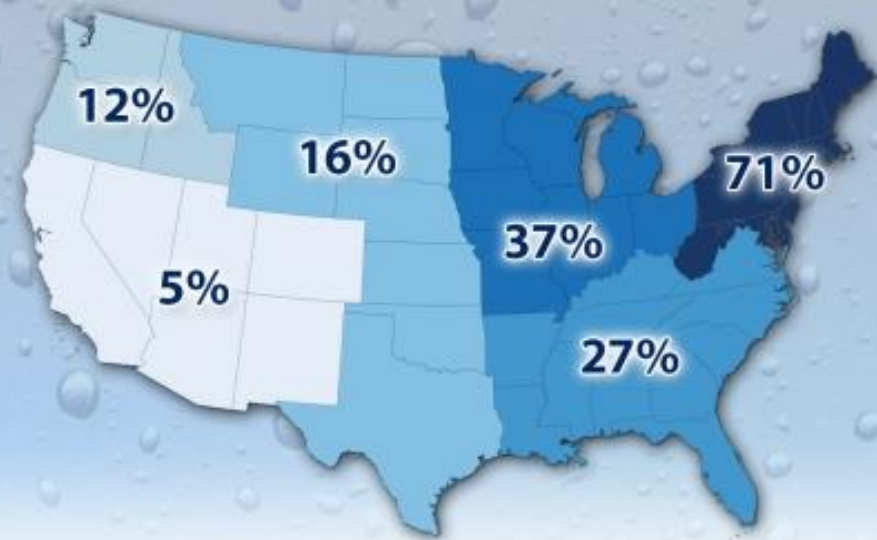


Source: EPA

A growing problem...



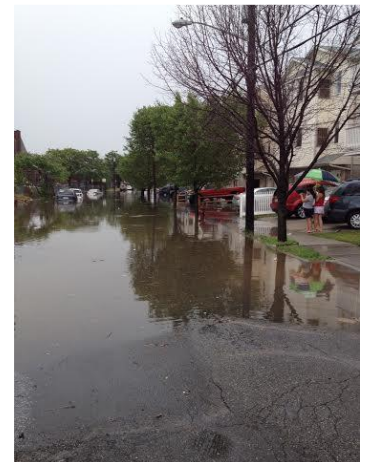
Heavy Downpours Increasing



Percent increase from 1958 to 2012 in the amount of precipitation falling in very heavy events.
Very Heavy Precipitation is defined as the heaviest 1% of all daily events from 1958-2012.

Source: Kenneth Kunkel, Cooperative Institute for Climate and Satellites, North Carolina State University and NOAA NCDC

CLIMATE  CENTRAL





Stormwater never travels alone.

Source: USEPA

Why should streets be green?



Economy: Construction cost savings, Energy costs savings, maintenance costs, higher property values, jobs creator



Environment: Improved water quality and groundwater quantity, cleaner air



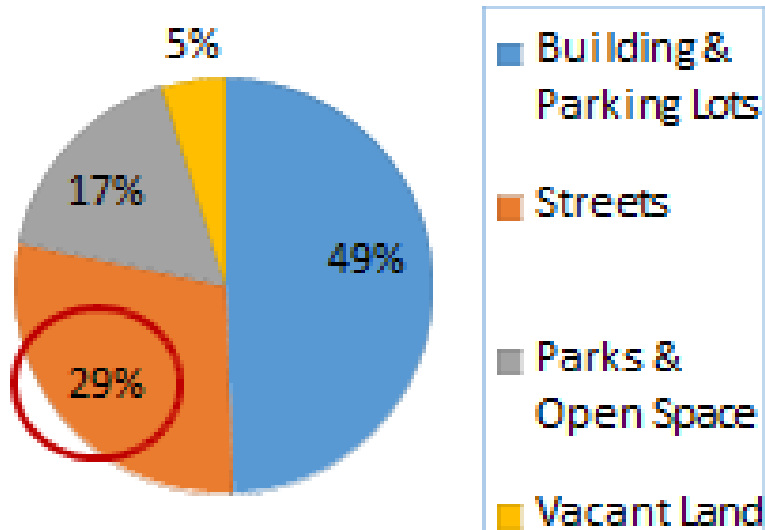
Society: Public health benefits, safer neighborhoods, slower and safer streets



Streets =
large
percentage
of a
municipality's
impervious
cover

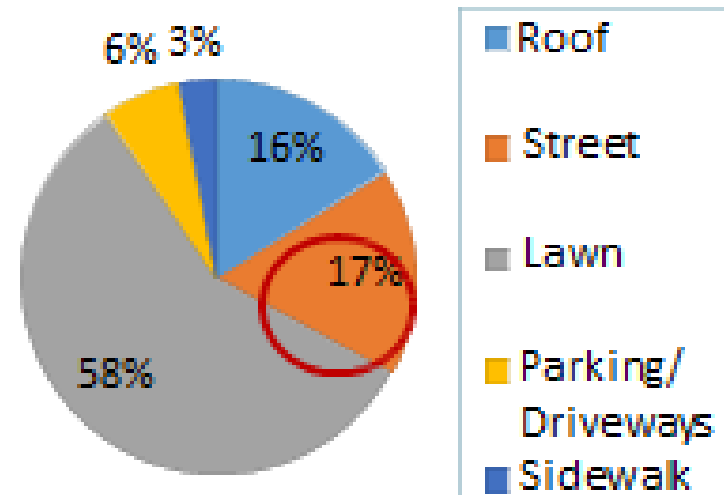
Why Green Streets?

Land Area by Use in New York City



Source: Urban Impact Lab

Land Area by Use for a Residential Development in Olympia, WA



All Transportation Surface = 26%

(PlaNYC Sustainable Stormwater Management Plan, 2008) (Impervious Surface Reduction Study, Olympia, WA, 1995)

Identifying Green Street Opportunities

- New Streets
- Street retrofits
- Municipal capital plans





GREEN
Streets
in
New Jersey



NEW
K-12 CITYWIDE
SCHOOL FAIR
SAT. JAN 30 | 11AM-4PM
BB&T PAVILION
(Formerly Superfund Bank Center)
CamdenEnrollment.org
856-536-3999

098007

BROADWAY
MILITARY

Broadway Triangle, Camden City



Broadway Triangle, Camden City

Credit: Camden County Municipal Utilities Authority



Westfield Ave., Camden City

Credit: Camden County Municipal Utilities Authority



Westfield Ave., Camden City



Westfield Ave., Camden City



Millburn, NJ



Washington Street in Hoboken

Takeaways

- GI is a powerful tool with big benefits. If you dismiss it, you might be opting for higher-cost alternatives.
- No need to reinvent the wheel, but GI is different. Requires a team approach and sharp attention to detail in design, construction and maintenance.
- Think outside the curb. Talk to local DPW and engineers. Is there a problem green infrastructure can help solve?
- You have expensive assets to protect. Green infrastructure can help.
- Leverage the private sector to build GI in exchange for incentives.
- Complete Streets = Green Streets

Resources

- [EPA: Learn about Green Streets](#)
- [WERF's Green Streets Basics and Design](#)
- [A Conceptual Guide to Effective Green Street Design Solutions: Green Streets \(PDF\)](#)
- [Managing Wet Weather with Green Infrastructure - Municipal Handbook - Green Streets \(PDF\)](#)
- [The City of Portland Oregon: A Green Street Overview](#)
- [National Association of City Transportation Officials, Urban Street Stormwater Guide](#)
- [City of Philadelphia Green Streets Design Manual](#)

Thank You!

Kandyce Perry
Planning & Policy Associate
kperry@njfuture.org
609-393-0008 ext. 108

New Jersey Future
16 W. Lafayette St.
Trenton, NJ 08608
609-393-0008

<http://www.njfuture.org>

<http://www.njfuture.org/mainstreaminggi>

