

Continuing Education Units | CEU's

To verify your attendance at this session **Scan in** at the **BEGINNING** and **Scan out** at the **END**

For your **PRINTED CERTIFICATE OF ATTENDANCE**, follow the directions found in the “CEU Procedures” section of the printed Conference Program Book



Other questions, please consult the *League Staff at the Information Booth on Level 2*

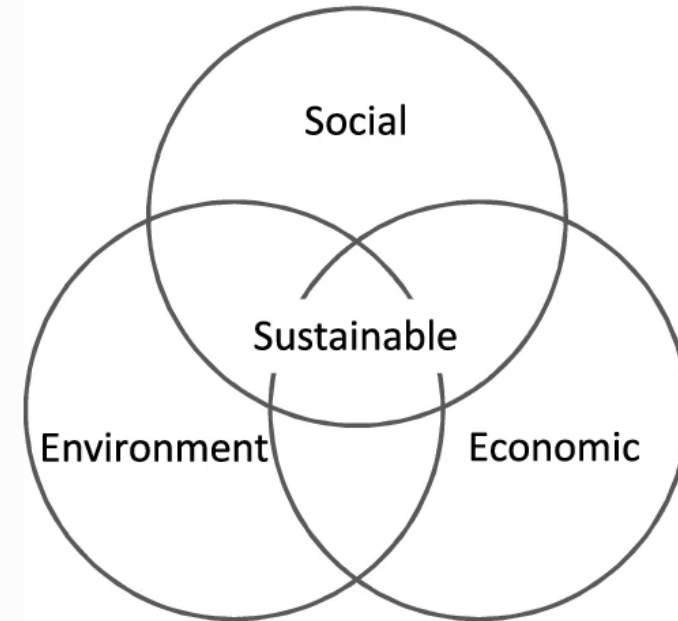


Sustainable Jersey Update: New Actions & Initiatives

2023 NJLM Conference
November 15, 2023

What is Sustainability?

Sustainability is most often defined as meeting the needs of the present without compromising the ability of future generations to meet theirs. It has three main pillars: social, economic, and environmental.





A Framework for Action

- Coordinates priorities, resources, and policy among public and private state and local actors
- Develops **tools, resources, and guidance** to make progress
- Provides access to **grants and technical assistance**
- **Recognizes** accomplishments

Statistics

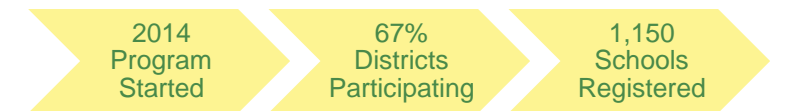
25,569
Actions
Implemented



Sustainable Jersey



Sustainable Jersey for Schools



\$7.6
MILLION



IN GRANTS FOR MUNICIPALITIES,
SCHOOLS & SCHOOL DISTRICTS



SUSTAINABLE JERSEY GRANTS PROGRAM



PSEG
Foundation

New Funding Cycle Announced!

- \$200,000 in grants are available to New Jersey municipalities participating in the Sustainable Jersey program
- \$2k, \$10k and \$20k grants for sustainability projects and green team support

Informational Webinar

1-2:30pm on
Thursday,
**December 7,
2023**

Application Deadline

By 11:59pm
on Friday,
**February 9,
2024**

Award Notifications

By mid April
2024 with an
event in mid
May 2024

Performance Period

10k Grants:
18 months
2k Grants:
12 months

Learn More & Apply





NEW JERSEY

STUDENT CLIMATE CHALLENGE

FREE OPPORTUNITY AVAILABLE TO NEW JERSEY PUBLIC SCHOOL STUDENTS IN GRADES 6 TO 12

TEACHER REGISTRATION OPENS

OCTOBER 10

Teacher registers student team who will complete a school or community project that addresses a cause or impact of climate change



STUDENT ENTRIES DUE

APRIL 10

Teams create a digital story video about the project and submits it by April 10, 2024



AWARDS CEREMONY

EARLY JUNE

Winners are recognized at an Awards Ceremony hosted by First Lady Tammy Murphy and receive grants to advance their climate education initiatives ranging from \$3,500 to \$500

bit.ly/NJStudentClimateChallenge

Technical Assistance

- Energy
 - Community Energy Planning
 - Energy Efficiency Upgrades to Facilities
 - Residential and Business Outreach
 - Renewable Energy
 - Electric Vehicles
- Water
- Complete Streets
- Equity
- Healthy Communities

102 Projects



Regional Hubs

Lauren Skowronski
Assistant Director

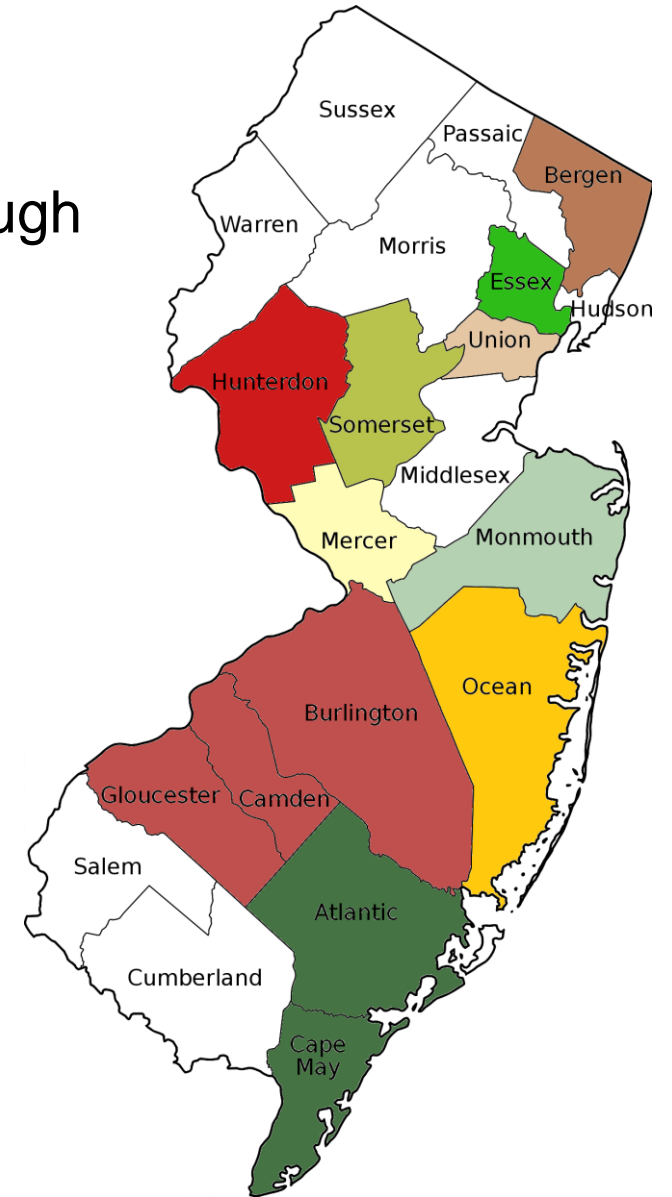


Regional Hubs

Ten hubs around the state to help green teams build capacity through training, best practices resources and networking. Learn more sustainablejersey.com/get-involved/

Benefits

- Peer mentoring
- Project collaboration
- Online communication platform
- Network of Leaders
- Quarterly Events
- Help Peers Get Certified
- Technical assistance & administrative support from SJ



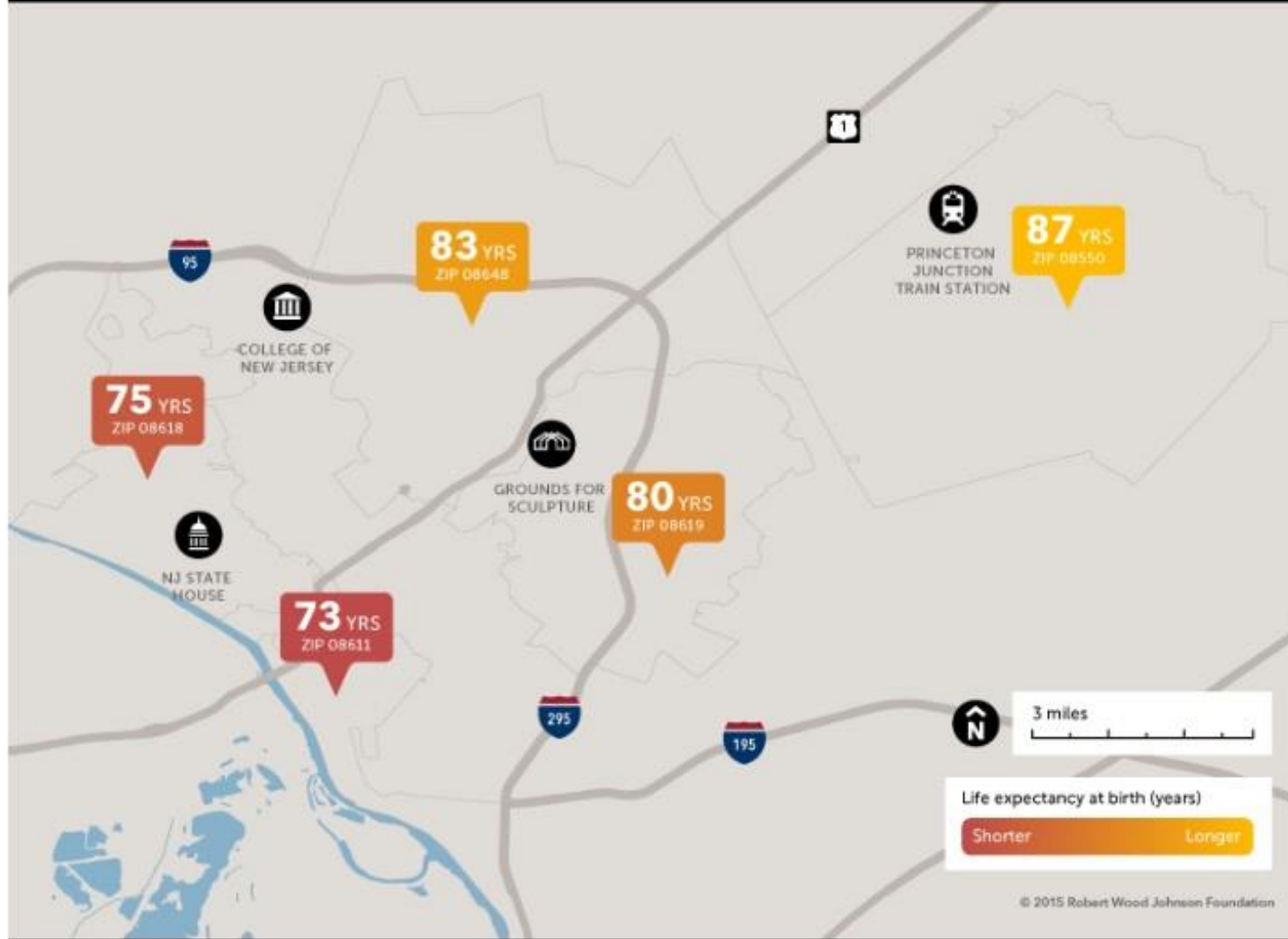


Public Health

Lauren Skowronski
Assistant Director



Short Distances to Large Gaps in Health



DIVERSITY & EQUITY

Diversity on Boards & Commissions*

Environmental Justice in Planning & Zoning

Lead Education & Outreach Programs

EMERGENCY MANAGEMENT AND RESILIENCY

Climate Adaptation: Flooding Risk*

Coastal Vulnerability Assessment

Extreme Temperature Event Plan

Heat Island Assessment

Community Wildfire Protection

Firewise Community

Ready Set GO! Fire Comp

Wildfire Safety Council

Emergency Communications Planning

Vulnerable Populations Identification for Emergencies

HEALTH & WELLNESS

Anti-Idling Education & Enforcement Program

Building Healthier Communities

HIA Professional Development

Lead in Drinking Water

Private Well Testing

Safe Routes to School

Smoke-Free and Tobacco-Free Public Places

PUBLIC INFORMATION & ENGAGEMENT

Municipal Communications Strategy

Improve Public Engagement in Municipal Government

Improve Public Engagement in Planning and Zoning

Online Municipal Public Service Systems

INNOVATIVE COMMUNITY PROJECTS

Innovative Community Projects (up to 3)

LAND USE & TRANSPORTATION

Sustainable Land Use Pledge*

Build-Out Analysis

Bicycle and/or Pedestrian Audit

Bicycle and/or Pedestrian Plan

Adopt a Complete Streets Policy

Institute Complete Streets

Effective Parking Management

Green Infrastructure Planning

Green Infrastructure Implementation

Enhanced Stormwater Management Control Ordinance

Green Building & Environmental Sustainability Element

Historic Preservation Element

Smart Workplaces

Transit Oriented Development Supportive Zoning

ENERGY

Energy Efficiency for Municipal Facilities

Energy Tracking & Management*

Buy Electricity from a Renewable Source

Energy System

Energy System

Energy System

Energy Aggregation

Energy Efficiency Outreach

Residential Energy Efficiency Outreach

Make Your Town Solar Friendly

Community-Led Solar Initiatives

Wind Ordinance

Fleet Inventory*

Meet Target for Green Fleets

Purchase Alternative Fuel Vehicles

Public Electric Vehicle Charging Infrastructure

Make Your Town Electric Vehicle Friendly

FOOD

Farmland Preservation Plans

Community Garden

Buy Fresh Buy Local® Programs

Farmers Markets

LOCAL ECONOMIES

Green Business Recognition Program*

Green Jobs/Economic Development

ARTS & CREATIVE CULTURE

Establish a Creative Team

Creative Assets Inventory

Creative Placemaking Plan

Municipal Commitments to Support Arts and Creative Culture

Utilizing Your Creative Assets



Health Gold Munis Developing Solutions

- Equitable access to reliable transportation
- Mental health
- Pedestrian safety & mobility
- Language barriers
- Vaping



Community Forestry Equity

Melanie McDermott
Senior Researcher





TREES FOR SCHOOLS

TREE-PLANTING GRANTS FOR NEW JERSEY
PUBLIC SCHOOLS, COLLEGES, AND UNIVERSITIES



THE COLLEGE OF NEW JERSEY
SUSTAINABILITY INSTITUTE

- Funded by the NJDEP, Sustainable Jersey/TCNJ has awarded **\$4.5 million** in grants to support tree planting projects at **34** NJ public schools, colleges and universities
- Municipalities are playing important roles:
 - Shade Tree Commissions & DPWs provide technical assistance
 - Trees are planted on municipal property (parks, streets) used by students

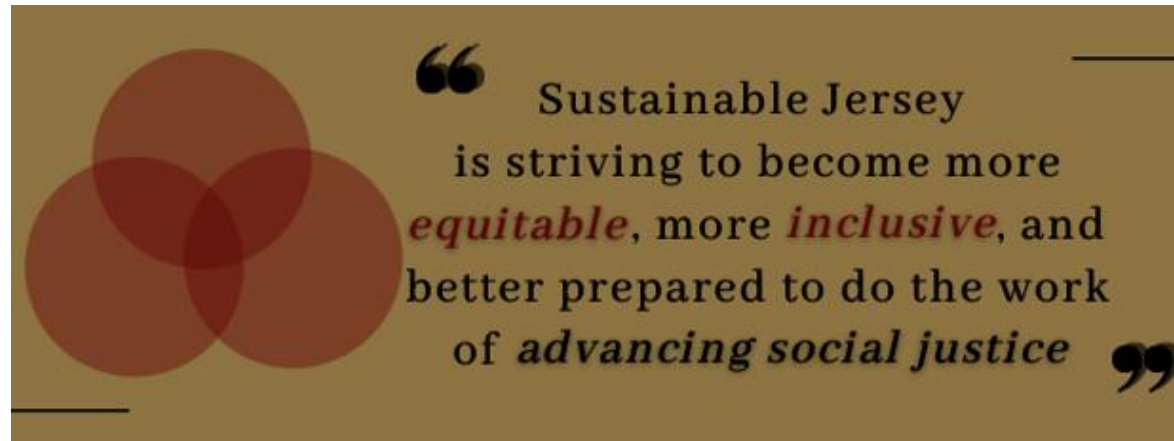
Tree Stewardship Actions

For up to 135 points:

- Community Forestry Management Plan and NJUCF Accreditation (≤ 20 points)
 - Tree Hazard Inventory (10 points)
 - Tree Maintenance Programs (10 points)
 - Tree Planting Programs (10 points)
- Tree Protection Ordinance (10 points)
- Heat Island Assessment & Mitigation Plan (≤ 20 points)
- 4 wildfire protection actions (≤ 45 points)

Sustainable Jersey Equity Commitments:

- Increase diversity among Board, staff & volunteers
- Provide training & support to municipalities to advance equity
- Develop actions to advance social equity & inclusion



Actions to Integrate Equity

- Technical Assistance and Equity Coaching pilot
- Dunellen completing Community Equity and Diversity Profile
 - Describe community diversity with demographic data
 - Describe neighborhood-level diversity with maps
 - Identify social groups: vulnerable and/or with communication needs
 - Identify communications barriers and networks
- *Applying* profile results to develop an equitable Municipal Communications Strategy



Policy & Planning

Anne Heasley
Program Manager



Major Initiatives

1. Sustainable Water Management
2. Climate Change Planning
3. Complete Streets





Local action for sustainable water management



New & Updated Actions Released!

Winter Best Practices to Reduce Road Salt Impacts *added*
& Municipal Water Story *updated*

Learn more on the Program Updates page
<https://www.sustainablejersey.com/actions/program-updates/>





Winter Best Practices to Reduce Road Salt Impacts action

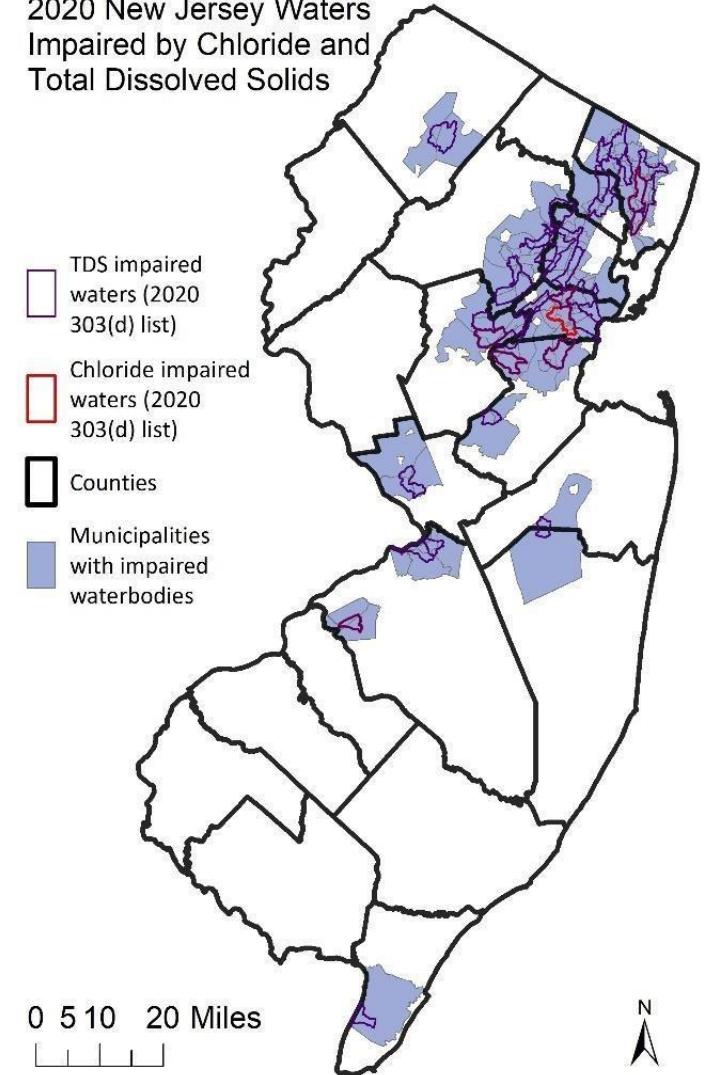
Webinar - online

Tuesday, December 12, 2023

12:00pm to 1:00pm

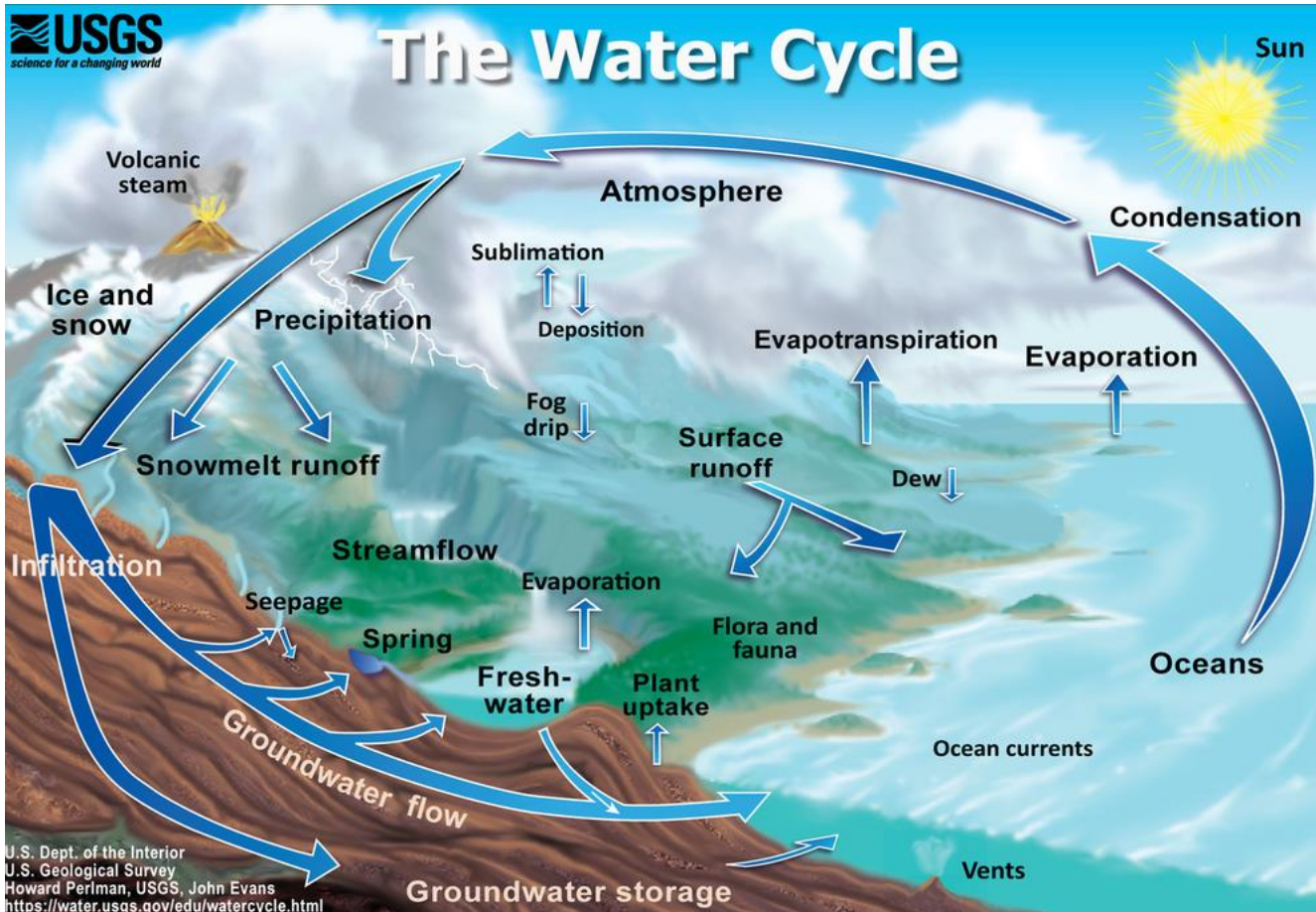
Register: sustainablejersey.com/nc/events/

2020 New Jersey Waters Impaired by Chloride and Total Dissolved Solids





Municipal Water Story



The Woodbridge Water Story

WoodbridgeTV
9,39K subscribers

Subscribe

Like Share ...





Private Well Outreach & Testing

What is gross alpha radioactivity in water?

Gross alpha is a measure of radioactivity in drinking water. In South Jersey, radium is the element that causes this radioactivity. Radium is a naturally occurring contaminant. The Kirkwood-Cohansey Aquifer, which provides drinking water to many counties in South Jersey for both public and private well water sources, contains elevated concentrations of radium.

Radium is odorless, colorless and tasteless. Testing is the only way to determine if it is present. A gross alpha test > 5 pCi/L indicates high radium in South Jersey drinking water.

Adverse Health Effects

Chronic exposure to unsafe levels of radium can cause:

- Anemia
- Bone, breast, liver and sinus cancer
- Cataracts
- Fractured teeth



Testing your water

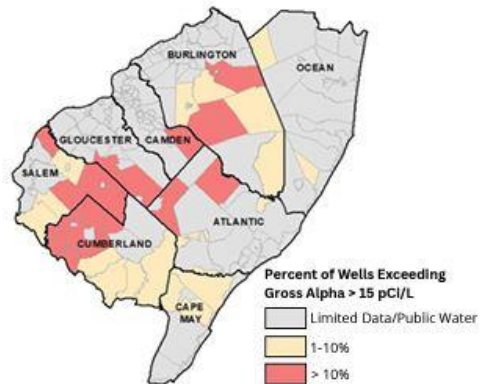
Well owners should have their well water sampled and tested for gross alpha by a NJ certified laboratory. A list of certified labs is available here:

<https://bit.ly/PWTALabs>



Private Well Communities Vulnerable to Radium in Drinking Water

Many wells in South Jersey are vulnerable to radium. Data available from the New Jersey Private Well Testing Act (PwTA) identifies municipalities with a high percentage of private wells with exceedances for gross alpha radioactivity**.



Municipalities with a percentage > 10% (red) include:

Atlantic County: Buena Vista, Folsom Borough, Mullica
Burlington County: Pemberton, Shamong, Tabernacle
Camden County: Waterford
Cumberland County: Deerfield, Fairfield, Greenwich, Hopewell, Stow Creek, Upper Deerfield
Gloucester County: Elk, Franklin
Salem County: Alloway, Oldmans, Pittsgrove, Upper Pittsgrove

** Available data from the PwTA defines an exceedance as a gross alpha result > 15 pCi/L. A larger number of wells are at risk of exceeding > 5 pCi/L and are not shown on this map.

Reducing Radioactivity in your Drinking Water

Water Treatment:

A water softener or reverse osmosis can reduce radioactivity in your drinking water. A water softener is a filter that exchanges sodium for hard water minerals including magnesium and calcium and other positively charged ions (cations) such as radium. A **water softener is a cost-effective (\$800 - \$1,500) option for the average home. You may consider installing a water softener as a protective measure.**

A point-of-use (POU) reverse osmosis system is another effective treatment option, however it only treats one tap in the home (usually the kitchen sink) and exposure may continue from other taps. Whole house versions are available but are expensive.

Maintenance is necessary:

For water softeners, monitor salt levels in the brine tank and for reverse osmosis, change filters in accordance with manufacturer's instructions. It may be beneficial to consult with a water treatment professional to determine the most suitable water treatment for your home

Financial Assistance:

The NJ Housing & Mortgage Finance Agency offers a Potable Water Loan Program that can be utilized by individual homeowners to assist with water treatment financing. More information on the Potable Water Loan Program is available here:

nj.gov/dca/hmfa/consumers/homeowners/



Environmental and Occupational Health Surveillance Program

Private Well Outreach Project:
nj.gov/health/ceohs/environmental-occupational/private-well-outreach/

Phone: (609) 826-4984



Enhanced Stormwater Management



ABOUT
US

PROTECTING
WATER

PROFESSIONAL
RESOURCES

PLAN YOUR
VISIT

PROGRAMS

ANNUAL
EVENTS

PLAN AN
EVENT



Enhanced Stormwater Management Model Ordinance

The Watershed Institute Releases Enhanced

<https://thewatershed.org/the-watershed-institute-releases-enhanced-stormwater-management-model-ordinance/>

ENHANCED MODEL STORMWATER ORDINANCE FOR MUNICIPALITIES

Municipalities in New Jersey are required to adopt a Municipal Stormwater Control ordinance reflecting various amendments made in the Stormwater Management Rule (N.J.A.C. 7:8) by the New Jersey Department of Environmental Protection (NJDEP). To assist municipalities in adopting stormwater ordinances, New Jersey Future developed this Enhanced Model Ordinance. It is based on [Appendix D: Model Stormwater Control Ordinance for Municipalities of the NJ Stormwater Best Management Practices Manual](#) provided by NJDEP, and includes modifications beyond the minimum to provide for improved water quality, more widespread implementation of green infrastructure, and greater protection of water resources. This sample ordinance is provided for information purposes only. It is important that amended rules are carefully reviewed before any portion of this draft ordinance is adopted. This ordinance is intended to apply to major and minor developments not pre-empted by the Residential Site Improvement Standards at N.J.A.C. 5:12.

Stormwater management aims to minimize pollution caused by stormwater in order to restore, enhance, and maintain the integrity of waters of the state. Federal, as well as state, water pollution laws permit municipalities to undertake additional actions including ordinances with standards stronger than the statewide minimum requirements N.J.A.C. 7:8-1.5(i). A municipality may choose stronger or additional measures, beyond the minimum standards and expectations set forth in N.J.A.C. 7:8, to improve local water quality, mitigate flood risk, and/or address other environmental or community needs.

New Jersey Future (NJF) recognizes the stormwater challenges faced by municipalities within the state, including water pollution and flooding. The [2016 New Jersey Integrated Water Quality Assessment](#)

<https://gitoolkit.njfuture.org>



Enhanced Stormwater Management

The screenshot shows a webpage with a blue navigation bar containing links for "Home", "Underlying Science", "Lessons from Tropical Storm Ida", "Engagement Sessions", and "New Jersey's Flood Indicator Tool". The main content area features a photograph of a flooded residential street with a white house in the background. Overlaid on the left is a circular logo for the "INLAND FLOOD PROTECTION RULE" with "NJDEP" in the center. The text "Inland Flood Protection Rule" is centered over the photo. At the bottom, a grey box contains the text: "The Inland Flood Protection rule has been adopted, effective July 17, 2023."

Webinar - online

Tuesday, February 6, 2024

12:00pm to 1:00pm

Register:
sustainablejersey.com/nc/events/

Sustainable Jersey Sessions - New Jersey League of Municipalities

GET BETTER BUY-IN WITH EQUITABLE COMMUNITY ENGAGEMENT STRATEGIES

Tuesday, 11/14, 2:00pm – 3:15pm, Room 420

COMMUNITY ENERGY PLANNING: LESSONS LEARNED & LOOKING AHEAD

Tuesday, 11/14, 3:45pm – 5:00pm, Room 421

SUSTAINABLE JERSEY PROGRAM UPDATE

Wednesday, 11/15, 9:00am – 10:15am, Room 420

WHAT'S NEW IN ENERGY EFFICIENCY OUTREACH CAMPAIGNS

Wednesday, 11/15, 10:45am – 12:00pm, Room 421

INVESTING IN ACTIVE TRANSPORTATION: TEST IDEAS, FIND FUNDING

Wednesday, 11/15, 2:00pm – 3:15pm, Room 420

THINK OUTSIDE THE BIN: NON-MANDATED RECYCLING INITIATIVES

Wednesday, 11/15, 2:00pm – 3:15pm, Room 421

POWER SURGE: SPARKING SUCCESS FOR ELECTRIC VEHICLES

Wednesday, 11/15, 3:45pm – 5:00pm, Room 421

PLANNING FOR LOCAL RESPONSES TO CLIMATE CHANGE

Thursday, 11/16 9:00am – 10:15am, Room 420

TREE STEWARDSHIP IMPROVES COMMUNITY RESILIENCE

Thursday, 11/16 10:45am – 12:00pm, Room 421

STORMWATER MANAGEMENT: MAP, MONITOR AND MAINTAIN

Thursday, 11/16 2:00pm – 3:15pm, Room 420



Local action to plan and implement climate change adaptation

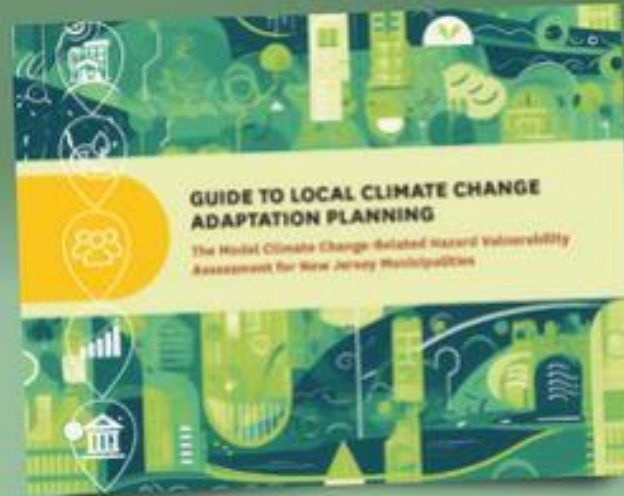


Authoritative Guide for Municipalities

**Municipal Leaders are on the Frontlines
of Climate Change Adaptation**

**NOW
AVAILABLE**

Download the New Guide



Are you ready to take the first crucial step toward protecting and strengthening your community?

Authoritative Guide for Municipalities

Hazards include:



Are you working with your community and planning professionals to consistently address the risks and impacts?

Impacts affect:



Authoritative Guide for Municipalities

Municipal master plans are now required by legislation to include a CCRHVA. This guide will help your town meet all the requirements of the law, while launching a process to build long-term adaptive capacity and resilience.



Sustainable Jersey Sessions - New Jersey League of Municipalities

GET BETTER BUY-IN WITH EQUITABLE COMMUNITY ENGAGEMENT STRATEGIES

Tuesday, 11/14, 2:00pm – 3:15pm, Room 420

COMMUNITY ENERGY PLANNING: LESSONS LEARNED & LOOKING AHEAD

Tuesday, 11/14, 3:45pm – 5:00pm, Room 421

SUSTAINABLE JERSEY PROGRAM UPDATE

Wednesday, 11/15, 9:00am – 10:15am, Room 420

WHAT'S NEW IN ENERGY EFFICIENCY OUTREACH CAMPAIGNS

Wednesday, 11/15, 10:45am – 12:00pm, Room 421

INVESTING IN ACTIVE TRANSPORTATION: TEST IDEAS, FIND FUNDING

Wednesday, 11/15, 2:00pm – 3:15pm, Room 420

THINK OUTSIDE THE BIN: NON-MANDATED RECYCLING INITIATIVES

Wednesday, 11/15, 2:00pm – 3:15pm, Room 421

POWER SURGE: SPARKING SUCCESS FOR ELECTRIC VEHICLES

Wednesday, 11/15, 3:45pm – 5:00pm, Room 421

PLANNING FOR LOCAL RESPONSES TO CLIMATE CHANGE

Thursday, 11/16 9:00am – 10:15am, Room 420

TREE STEWARDSHIP IMPROVES COMMUNITY RESILIENCE

Thursday, 11/16 10:45am – 12:00pm, Room 421

STORMWATER MANAGEMENT: MAP, MONITOR AND MAINTAIN

Thursday, 11/16 2:00pm – 3:15pm, Room 420



Local action to improve roads for biking and walking



Complete Streets Technical Assistance

Provides technical assistance to municipalities to advance a Complete Streets initiative.

- Competitive application process
- Partnership of NJTPA, Sustainable Jersey, and Voorhees Transportation Center at Rutgers
- 24 studies completed to-date



Complete Streets Technical Assistance



Belleville Temporary Demonstration



Oakland Policy



Westfield Walkable Community Workshop



Implementation Examples

Municipality	Amount	Source	Project
Cranbury	-	Municipal	Bikeway installed during repaving
Dunellen	-	Municipal	Bikeway installed during repaving
Eatontown	\$275,000	NJDOT	Greenway
Manville	\$48,000	RAISE	RR grade crossings study
Passaic City	\$454,000	Transportation Alternatives	Streetscaping and bikeway construction
Seaside Heights	\$824,000	Transportation Alternatives	Streetscaping and bikeway construction
West Orange	\$780,000	Transportation Alternatives	Pedestrian crossing construction

Application Timeline



Application period opens **December 5:**
<http://bit.ly/CompleteStreetsTA>



Sustainable Jersey Sessions - New Jersey League of Municipalities

GET BETTER BUY-IN WITH EQUITABLE COMMUNITY ENGAGEMENT STRATEGIES

Tuesday, 11/14, 2:00pm – 3:15pm, Room 420

COMMUNITY ENERGY PLANNING: LESSONS LEARNED & LOOKING AHEAD

Tuesday, 11/14, 3:45pm – 5:00pm, Room 421

SUSTAINABLE JERSEY PROGRAM UPDATE

Wednesday, 11/15, 9:00am – 10:15am, Room 420

WHAT'S NEW IN ENERGY EFFICIENCY OUTREACH CAMPAIGNS

Wednesday, 11/15, 10:45am – 12:00pm, Room 421

INVESTING IN ACTIVE TRANSPORTATION: TEST IDEAS, FIND FUNDING

Wednesday, 11/15, 2:00pm – 3:15pm, Room 420

THINK OUTSIDE THE BIN: NON-MANDATED RECYCLING INITIATIVES

Wednesday, 11/15, 2:00pm – 3:15pm, Room 421

POWER SURGE: SPARKING SUCCESS FOR ELECTRIC VEHICLES

Wednesday, 11/15, 3:45pm – 5:00pm, Room 421

PLANNING FOR LOCAL RESPONSES TO CLIMATE CHANGE

Thursday, 11/16 9:00am – 10:15am, Room 420

TREE STEWARDSHIP IMPROVES COMMUNITY RESILIENCE

Thursday, 11/16 10:45am – 12:00pm, Room 421

STORMWATER MANAGEMENT: MAP, MONITOR AND MAINTAIN

Thursday, 11/16 2:00pm – 3:15pm, Room 420



Energy

Nancy Quirk
Senior Program Manager



Municipal Energy Actions

	Energy Efficiency	Renewable Energy	Alternative Fuel Vehicles
Municipal Operations	<ul style="list-style-type: none"> • Energy Efficiency for Municipal Facilities • Energy Tracking and Management 	<ul style="list-style-type: none"> • On-Site Geothermal • On-Site Solar +10 pt storage/resilience + 5 pt solar thermal • On-Site Wind • Buy Renewable Energy 	<ul style="list-style-type: none"> • Fleet Inventory • Purchase Alternative Fuel Vehicles • Meet Green Fleet Targets
Community Energy Use	<ul style="list-style-type: none"> • Energy Assistance Outreach • Commercial Energy Efficiency Outreach • Residential Energy Efficiency Outreach • Community Energy Plan / Climate Action Plan 	<ul style="list-style-type: none"> • Make Your Town Solar Friendly • Municipally Supported Community Solar • Solar Outreach • Renewable Government Energy Aggregation (R-GEA) 	<ul style="list-style-type: none"> • Make Your Town Electric Vehicle (EV) Friendly • Public EV Chargers • Electric Vehicle Outreach

Residential Energy Efficiency Outreach

For 10 points:

- Outreach plan developed with utility
 - Comfort Partners Program
 - Home Weatherization for Income Qualified Customers
 - Home Performance with ENERGY STAR® (HPwES)
- Outreach requirements
 - Energy Efficiency page on municipal or green team website
 - List of HPwES Contractors

For additional 10 points:

- Pre-selected HPwES Assessment(s)
 - Municipality selects HPwES contractor(s) for outreach campaign via RFP
- Information on municipal website includes selected HPwES contractor(s)
- Letter from municipality includes selected HPwES contractor(s)
 - Letter recommends that residents solicit three price quotes for upgrades

Commercial Energy Efficiency Outreach

For 10 points:

- Outreach plan developed with utility
 - Small Business Direct Install
- Outreach requirements
 - Energy Efficiency page on municipal or green team website
 - Letter from municipality to local businesses

For additional 10 points:

- Pre-selected Direct Install contractor(s)
 - Municipality selects DI contractor(s) via RFP to feature in outreach campaign
- Information on municipal website to include selected DI contractor(s)
- Letter from municipality includes selected DI contractor(s)

Energy Assistance Outreach

10 points

- Energy assistance resources outreach campaign
 - LIHEAP, Payment Assistance for Gas and Electric (PAGE), etc.
- Meet with local community organizations serving low- and moderate-income residents to:
 - Collaborate on outreach campaign
 - Assist community organizations with energy efficiency incentive programs

Additional 10 points

- New Jersey Comfort Partners Program outreach campaign
 - Coordinate with Comfort Partners Utility Working Group
 - Sustainable Jersey Comfort Partners Outreach Toolkit



Volunteer briefed on Comfort Partners talking points at Newark's Lincoln Park Jazz Festival.

EE Outreach Campaign Ideas!

Sustainable Jersey — PSE&G
Energy Efficiency Partnership Program
Support Energy Efficiency In Our Communities!

Montclair
MAYOR OF MONTCLAIR, N.J. (2017-2021)

Montclair Residential Energy Efficiency Outreach Campaign

Our Campaign and Residential Energy Efficiency Program

Montclair's outreach campaign, in collaboration with Sustainable Jersey and PSE&G, aims to empower residents to make their homes more energy-efficient. Through PSE&G's complimentary or cost-effective programs, the campaign provides essential resources and guidance, allowing renters and homeowners to implement sustainable practices and reduce their energy consumption effectively.

To participate, click on the button below:

GET STARTED

Montclair Green Team President
Contact: [Lisa Johnson](#)



Mayors Promoting the Campaign

Make Your Town Solar Friendly Action

Updated

- SolSmart Silver = automatic 15 points
- SolSmart certified munis requested to submit:
 - Supportive Solar Ordinance
 - Online Permitting Requirements Checklist
- For 30 points, all municipalities must submit:
 - Supportive Solar Ordinance
 - Adopted Permitting Fee Ordinance
 - Online Permitting Requirements Checklist
 - Solar Training for First Responders



New Jersey Community Solar Project Finder

- Large solar installation with multiple subscribers
- Provides benefits of solar to those not able to install solar
- Customers search by zipcode for projects serving their municipality
- Subscriber organizations list and update community solar projects
- FAQs on community solar

Some zip codes may not overlap perfectly with municipal boundaries. Community solar project sign-ups are by municipality, please check the chart to verify your eligibility.


Community solar subscribers can only subscribe to a project located in their electric utility service territory.

Enter your zip code to see projects serving your community


Enter a value

Not sure what some of the terms included in the chart below mean? See the [glossary of common community solar terms](#).

Project Name Subscriber Organization Developer Project Description	Link to Project Website	Date Project Operational	Eligibility Requirements	Estimated Percent Customer Savings*	Subscription Contract Terms	Electric Utility Service Territory	Municipalities Served by Project
Emerald City Solar Subscriber Organization: Subscibex LLC Project Developer: Solar Builder, Inc. Project Description: 3.3 MW Solar array on Sesame Street	Click here for more information and sign up.	projected to be operational 02/25/2023	Credit check required? NO Automated payment required	All customers 20% LMI customers 25%	Subscription contract length: 1 year Deposit or subscription fee: None	Atlantic City Electric	Emerald City, West Emerald City
Good Guys Solar for All Subscriber Organization: Subscibex LLC Project Developer: Solar Builder, Inc. Project Description: 2.3 MW Solar array on Emerald City Brownfield Site	Click here for more information and sign up.	operational since 1/1/2023					
Gotham Solar Project Subscriber Organization: Find Customer, LLC Project Developer: Solar Builder, Inc. Project Description: 2.3 MW solar array on a rooftop in Gotham	Click here for more information and sign up.	operational since 7/1/2022					
Mayberry Solar for All Subscriber Organization: Subscibex LLC Project Developer: Solar Builder, Inc.	Click here for more information and sign up.	projected to be operational 02/25/2023					



New Jersey Community Solar Project Finder



Enter your zip code to see a list of community solar projects that are available to residents in your zip code.


[Find Community Solar Projects Near You](#)

[Community Solar FAQ and Glossary](#)

What is Community Solar?

Community solar is for anyone who wants to benefit from solar energy generation without installing panels directly on their roofs. This is an ideal opportunity for renters, homeowners with shaded roofs, or anyone else that is unable to install their own solar array on their property to participate and benefit from the generation of renewable energy.

A community solar project is a solar array whose energy generation is financially divided among multiple participating subscribers. As a subscriber, you will receive a financial credit on your utility bill for the portion of power generated by the array on your behalf. Separately, you will be responsible for paying a subscription fee to the community solar project. Community solar projects are designed so that your utility bill credit is larger than the subscription fee, meaning that you save money!

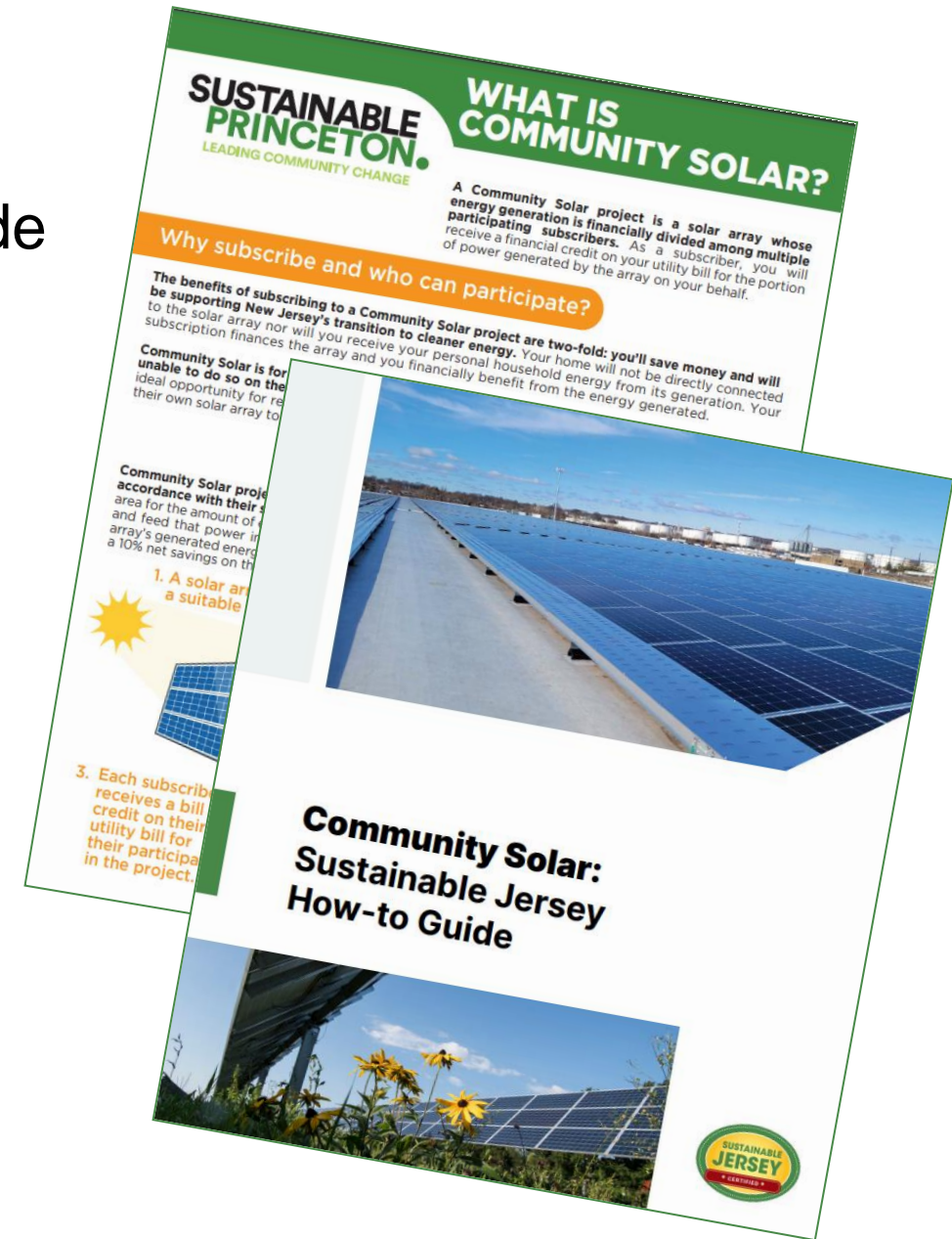


SustainableJersey.com/communitysolar

Community Solar Resources

- Sustainable Jersey Community Solar How-To Guide
- Municipally Supported Community Solar Action
- Sustainable Princeton
 - Community Solar Factsheet
 - Subscriber Tip Sheet

All resources can be found at sustainablejersey.com/fileadmin/media/Actions_and_Certification/Actions/Energy/Community_Solar_Resources.pdf

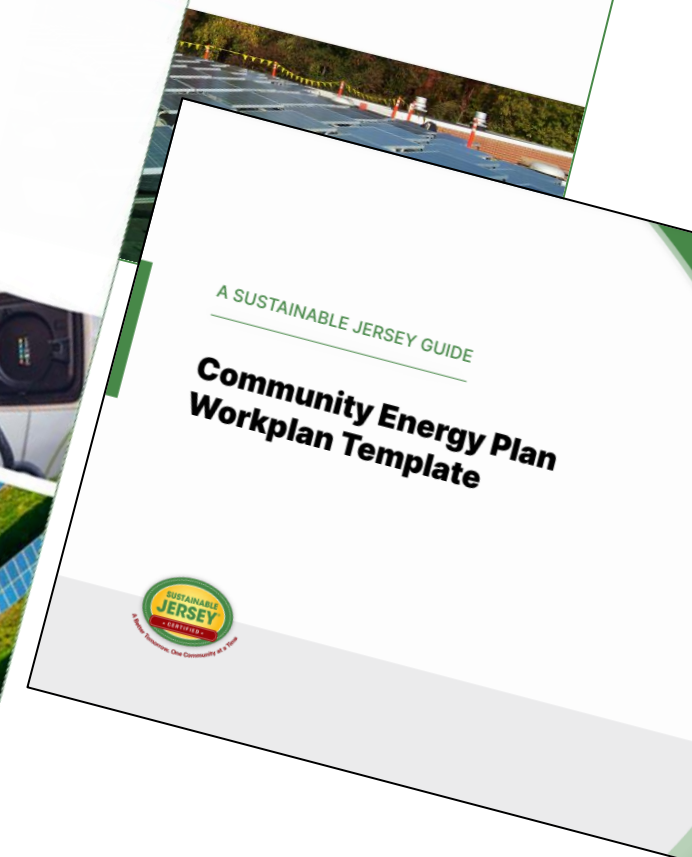
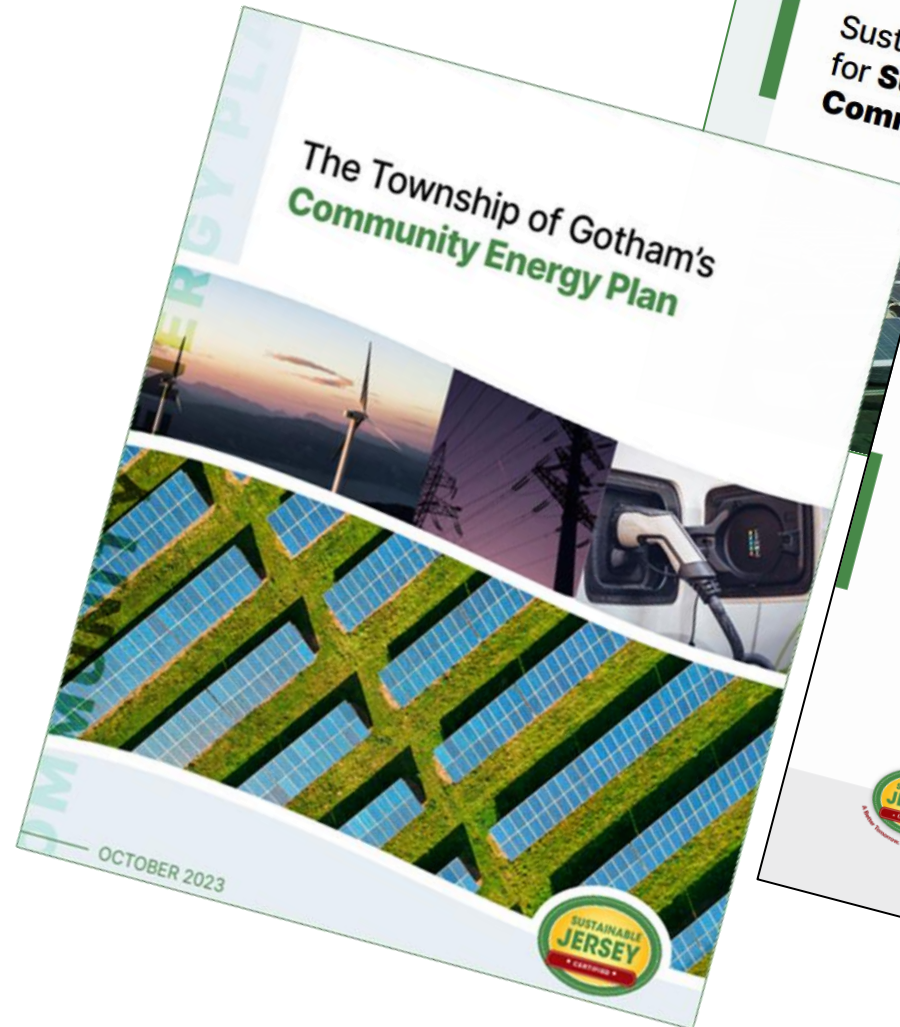


Community Energy Plan Action

- 10 points: Community Energy Plan (CEP)

OR

- 15 points: Climate Action Plan (CAP)
- Encourages planning that is
 - Energy-focused
 - Focused on high-impact initiatives
 - Strategic about community engagement
 - Easily implemented
- Must use Workplan Template
- CAP requires additional elements



Next Steps: Community Energy Plan Grants



STATE OF NEW JERSEY
Board of Public Utilities
44 South Clinton Avenue, 1st Floor
Post Office Box 350
Trenton, New Jersey 08625-0350
www.nj.gov/bpu

AGENDA FOR BOARD MEETING
The meeting will be held on
Friday, November 17, 2023 – 10:00 a.m.

F. Docket No. QO23090714 – In the Matter of New Jersey Clean Energy Program Fiscal Year 2024 Community Energy Plan Grant Program; and

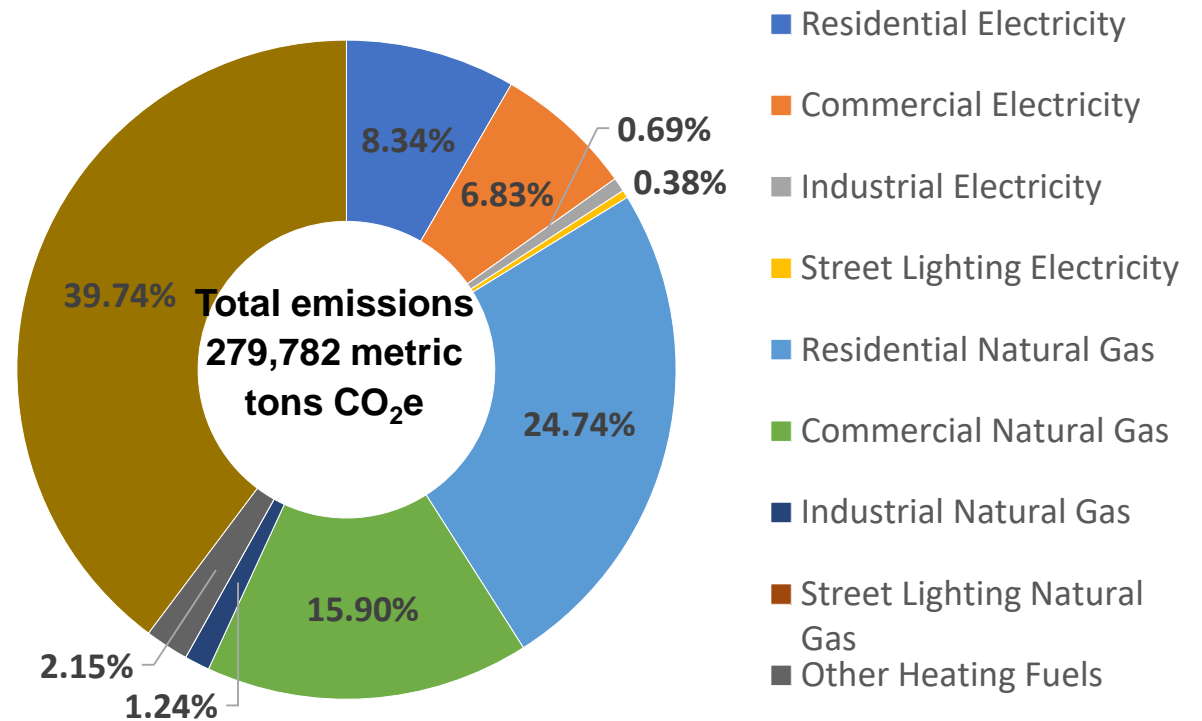
Docket No. QO23100729 – In the Matter of New Jersey Clean Energy Program Fiscal Year 2024 Community Energy Plan Implementation Grant Program.

The Board will consider the opening of the Community Energy Plan Grant Program for Fiscal Year 2024. The Board will also consider the establishment of the Community Energy Plan Implementation Grant Program for Fiscal Year 2024.

Community Carbon Footprint Action - Retired

Data available on
Sustainable Jersey Data Center

2020 Community-Scale Energy-Related GHG
Emissions
by Sector and Energy Type (MT CO₂e)



sustainablejersey.com/resources/data-center/



Sustainable Jersey Energy Technical Assistance

www.sustainablejersey.com/grants

Energy Technical Assistance includes:

- Assistance identifying and applying for state/utility incentives for facility upgrades
- Assistance setting up an energy tracking system for facility energy use

Energy Technical Assistance funded by:

- Board of Public Utilities
- Investor-owned utilities:
 - Elizabethtown Gas
 - New Jersey Natural Gas
 - PSE&G
 - South Jersey Gas

Technical Assistance in Action



Case study: Jersey City Public Schools

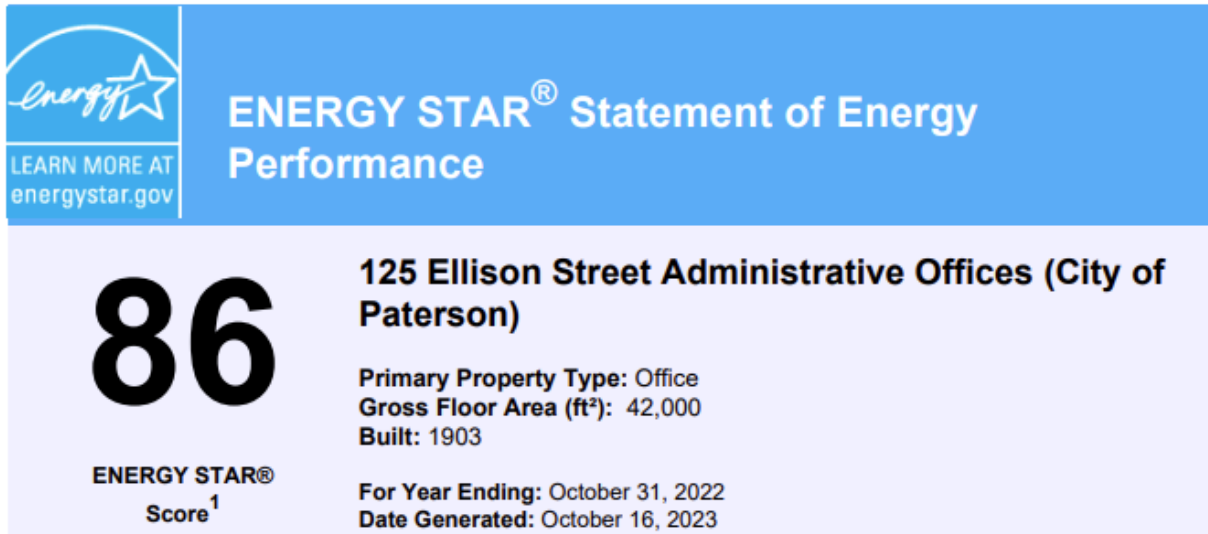
Sustainable Jersey Energy Technical Assistance Team:

- Organized energy data and set and updated energy tracking system
- Helped school district complete the energy usage reduction calculations needed to get points in *Energy Efficiency for School Facilities* action

Building Name	Building area in square feet	Baseline Energy Usage Data (before work was completed) Use actual billing data. [Enter year for baseline data]				Estimated Savings Identified in LGEA or Direct Install Assessment [Enter year for estimated energy savings]					EUI after Energy Upgrades	% Change in EUI in Building	Savings (Allocate % percentage based on the area of...)
		Enter grid purchased electricity (kWh) in this column	Enter natural gas (therms) in this column	Enter oil (gallons) in this column	Total kBtu per month	Enter potential electricity savings from ECMs (kWh/yr)	Enter potential natural gas savings from ECMs (therms/yr)	Enter potential oil savings from ECMs (gallons/yr)	Enter potential on-site generated electricity savings from ECMs (kWh/yr)	Total kBtu per month after energy upgrades			
Abraham Lincoln High School & Freshman Academy	272932	975234.8	127093		30,227,265	10.0	794,620	9590		20,985,591	76.8	-30.8%	-8.6%
Academy Middle School	64884	940039.4	0		30,359,824	96.3	238,380	0		7,932,840	19.9	-29.2%	-1.6%
Alexander D. Sullivan School (PS #30)	93129	395789.2	2224.2	3597591	568,414,537	5,459.3	45,190	90		507,820,794	5,453.9	-0.1%	-0.0%
Alfred E. Zampella School (PS #27)	94611	1207767.2			12,942,424	136.8	194,326	0		30,361,695	195.9	-15.2%	-1.4%
Anthony J. Iriarte School (PS #31)	12620	132240	15668.2		2,440,803	74.0	45,882	0		2,317,944	63.2	-17.7%	-0.7%
Chaplin Charles J. Waters School (PS #24)	18240	609843.6	439.6	441544.3	625,041,469	5,286.2	305,243	490		621,621,624	5,259.0	-0.5%	-0.6%
Charles E. Trehart School (PS #8)	96396	475181	2741.2	3912713.8	553,460,400	3,271.1	260,660	1900		550,551,462	3,253.9	-0.6%	-0.6%
Christa McAuliffe School (PS #23)	126761	1527617.2			16,373,160	163.8	195,356	0		14,271,194	126.8	-22.9%	-1.6%
Conelia F. Bradford School (PS #16)	49804	272400	27904.1		5,949,352	94.8	44,854	3320		5,693,900	91.4	-14.2%	-0.9%
Danforth Early Childhood Center	78396	538826	80.8	2615827.9	368,985,976	4,679.0	73,429	290		368,304,200	4,659.8	-0.2%	-0.2%
Dr. Charles P. DeLuco School (PS #29)	120439	390019	7480.2	4454778	620,976,686	4,974.9	190,599	4760		620,862,264	4,969.2	-0.3%	-0.4%
Dr. Mary Angelos School (PS #20)	908900	3520763.6	28900.4		13,927,856	53.4	209,896	960		11,709,662	19.1	-16.8%	-1.7%
Dr. Michael Conti School (PS #5)	148049	678891	62862.5		13,989,195	94.0	254,236	430		12,386,674	75.9	-19.3%	-2.9%
Dr. Paul Pralalder School (PS #33)	20807	952066.2	14817.3		3,385,483	104.1	50,634	480		2,451,247	86.6	-16.6%	-0.5%
Dr. Ronald McNear Academic High School	132321	1223592.2	47243.1		19,202,240	145.1	495,586	694		14,675,467	100.9	-23.0%	-3.9%
Enal L. Nolan Middle School (PS #40)	132483	612092.9	95342.3		12,475,631	94.2	314,447	660		9,036,459	68.2	-27.6%	-3.74%
Frank R. Connell Elementary School (PS #3)	117939	1395713.9	8826		15,777,176	133.8	439,234	480		10,778,395	93.9	-29.8%	-3.60%
Frank R. Connell Middle School (PS #4)	186278	1977837.9	5198.2		25,579,291	160.7	705,220	2800		30,488,971	166.4	-29.4%	-5.1%
Franklin L. Williams Middle School (PS #7)	163956	188894.7	94630.8		29,420,337	181.3	468,739	130		21,430,596	130.7	-19.0%	-3.8%
Fred V. Martin Center of the Arts (PS #41)	140487	1135267.1	14445.8	5987033.5	852,329,427	6,067.8	471,226	5480		846,703,882	6,027.8	-0.7%	-0.9%
Gladys Carlton Navers School	68100	904893.5	6.3	2967793.5	381,442,640	5,441.8	14,495	290		381,328,456	5,439.5	0.0%	0.0%
Glenn D. Cunningham Early Childhood Center	12300	18902.3	7923.2		2,905,400	74.0	15,927	40		1,944,250	62.4	-28.6%	-0.2%
James J. Ferris High School & Ferris Junior Academy	120940	377701.5	2379.9	3858725.4	518,800,520	4,273.2	192,362	460		518,608,520	4,257.4	-0.4%	-0.6%
Jersey City Board of Education (Central Office)	377122	2247998.1	142007		39,085,695	103.8	869,695	960		28,676,809	76.0	-26.6%	-8.20%
Jersey City Regional Day School	248980	445263.2			47,426,735	192.2	1,009,095	742		28,546,767	149.1	-22.9%	-5.9%
Joseph H. Brensingher School (PS #17)	30557	448226.4			6,914,270	97.4	2,200,189	0		2,433,331	71.9	-54.3%	-1.70%
Joseph V. Valeriano School (PS #16)	95384	1440827.9	95397.8		21,956,528	138.8	490,890	440		16,142,806	104.9	-24.4%	-3.9%
Julia A. Barnes School (PS #12)	148882	64005.9		2843271.3	363,483,227	2,408.9	236,078	580		360,648,654	2,422.4	-0.7%	-0.8%
Liberty High School	66376	224532.6	30721.8		6,632,675	65.2	39,997	20		6,536,338	64.4	-7.4%	-0.6%
Mahatma Gandhi Elementary School (PS #23)	32336	923247.1	153.5	1013099.4	142,995,508	4,289.7	26,520	70		142,838,541	4,281.4	-0.2%	-0.0%
Martin Luther King Jr. School (PS #11)	94453	884728.4	4565	4102683.2	595,216,794	3,650.0	344,068	870		591,623,778	3,583.2	-0.6%	-0.9%
Nicholas Copernicus School (PS #25)	106284	784741.9	37277.8		11,564,481	101.8	213,598	0		9,272,890	87.1	-13.0%	-1.4%
Oliver Culbreth Jr. School (PS #14)	132880	1062824	70.6	2049493.1	298,976,739	746.1	296,239	890		295,290,485	2,222.6	-1.0%	-0.14%
Patricia M. Noonan Elementary School (PS #26)	98026	263054.3	42633.7		7,460,620	76.1	87,594	1660		6,347,601	64.7	-14.9%	-1.90%
President Barack Obama School (PS #34)	123200	914187.8	36578.1		16,145,620	122.6	242,825	2950		12,142,860	96.5	-19.2%	-2.1%
PS #23 Annex Early Childhood Development Center	12375	78939	4241.3		1,295,580	104.7	29,882	30		979,508	79.1	-24.5%	-0.3%
PS #23 Annex Macarthur/D'Arco School	59480	17266.9	8094.8		3,740,419	64.0	29,882	30		2,423,259	59.5	-8.5%	-0.6%
PS #23 Annex Macarthur/D'Arco School	139534	328193.3	126.5	5449982.8	746,878,019	5,669.4	84,954	100		746,448,892	5,659.1	-0.1%	-0.1%
Reliance Institute (Zero Tolerance)	63489	128963.5		0	1,478,972.2	3,280.4	46,929	220		207,745,606	46,929	0.0%	-0.0%
Riv. Dr. Ernest F. Webb School (PS #22)	95714	961791.6	72374.8		13,682,545	87.1	194,320	4090		11,798,809	71.1	-18.3%	-2.94%
William M. Young Jr. School (PS #9)	127950	100064			23,749,096	124.4	62,186	20		19,277,644	101.9	-21.1%	-4.2%
William L. Dickinson High School	356000	1687579	8862.7	11294348	1,690,358,291	4,495.4	720,297	2020		1,592,850,026	4,474.3	-0.5%	-0.17%

Images: Sustainable Jersey meeting with JCPS sustainability working group; energy use reductions spreadsheet

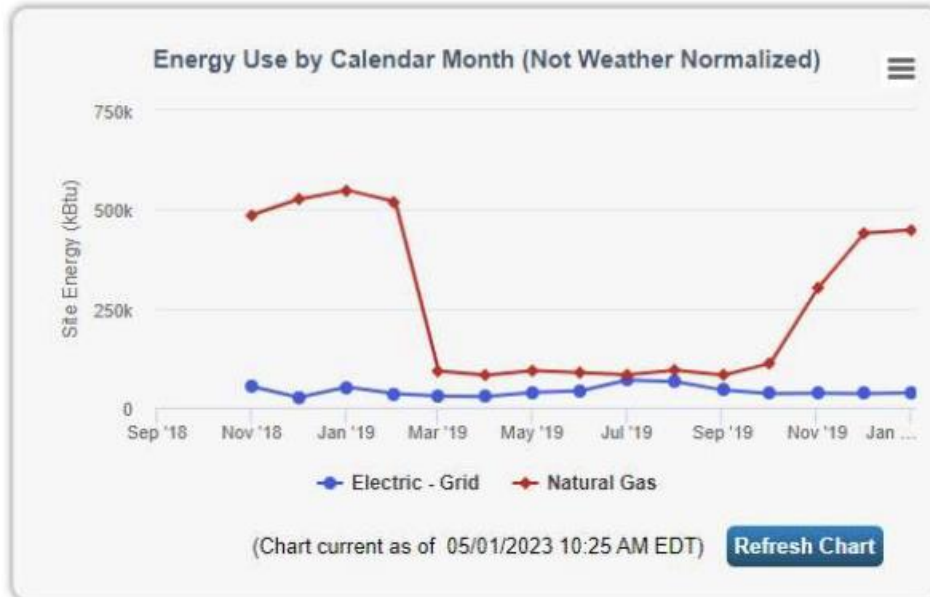
Technical Assistance in Action



1. The ENERGY STAR score is a 1-100 assessment of a building's energy efficiency relative to other buildings of similar size, climate and business activity.

Property & Contact Information	
Property Address	125 Ellison Street Administrative Office (City of Paterson) 125 Ellison Street Passaic, New Jersey 07505
Property ID:	3919082

Energy Consumption and Energy	
Site EUI	64 kBtu/ft ²
Annual Energy by	Electric - Grid (kBtu)
	Natural Gas (kBtu)
Source EUI	90.6 kBtu/ft ²



Case study: City of Paterson

Sustainable Jersey Energy Technical Assistance Team:

- Organized energy data
- Supported application to NJCEP Local Government Energy Audit
- ENERGYSTAR Portfolio Manager
- Action points
 - Energy Tracking and Management
 - Energy Efficiency for Facilities

Images: Benchmarking / energy usage reports from Paterson's ESPM account

Certification Program Updates

Samantha McGraw
Senior Department Administrator



2024 Certification Cycle

	FIRST ROUND	SECOND ROUND	THIRD ROUND
Submission Deadline	Feb. 25	May 10	July 31
Return Date	Early-April	Mid-June	Late-Sep.

- Municipalities can submit for the first time in any round, but it is recommended to submit in the first two rounds to receive feedback to help achieve certification.
- Informational webinar December 13 at 12:00pm

More information & webinar registration:
sustainablejersey.com/2024-certification-cycle





New, Updated & Retiring Actions



↑ BACK TO TOP	EXPAND ALL	COLLAPSE ALL	↕
Arts & Creative Culture			▼
Brownfields			▼
Community Partnership & Outreach			▼
Diversity & Equity			▼
Emergency Management & Resiliency			▼
Energy			▼
Food			▼
Green Design			▼
Health & Wellness			▼
Innovative Projects			▼

New, Updated & Retiring Actions

<u>Category</u>	<u>Action</u>	<u>Points</u>	<u>Status</u>
Animals in the Community	<i>Animals in the Community Education</i>	10	<i>Retires 12/31/23</i>
Community Partnership & Outreach	Green Fair <i>“Green” Your Green Fair</i>	10 to 15 10	Updated <i>Retires 12/31/23</i>
Emergency Management & Resiliency	Heat Island Assessment & Mitigation Plan	5 to 20	Updated
Energy	Energy Assistance Outreach Residential Energy Efficiency Outreach Commercial Energy Efficiency Outreach	10 to 20	Re-Launching 2024
Natural Resources	Municipal Water Story Winter Best Practices to Reduce Road Salt Impacts	20 to 25 5 to 15	Updated New

Stay up to date by visiting the Program Updates page: sustainablejersey.com/actions/program-updates

New, Updated & Retiring Actions

<u>Category</u>	<u>Action</u>	<u>Points</u>	<u>Status</u>
Operations & Maintenance	Green Purchasing Policy	5 to 10	New
	<i>Adopt a Green Purchasing Policy by Ordinance/Resolution</i>	<i>5 to 10</i>	<i>Retires 12/31/23</i>
	Green Cleaning Products & Motorized Cleaning Equipment (<i>formerly Green Cleaning Products</i>)	5 to 15	Updated
	Recycled Copy Paper (<i>formerly Recycled Paper</i>)	5 to 15	Updated
	<i>Efficient Landscape Design</i>	<i>10</i>	<i>Retires 12/31/23</i>
	<i>Integrated Pest Management</i>	<i>10</i>	<i>Retires 12/31/23</i>
Sustainability & Climate Planning	<i>Minimize Water Consumption</i>	<i>10</i>	<i>Retires 12/31/23</i>
	Community Energy Plan & Climate Action Plan	10 to 15	New 2024
	Community Sustainability Plan	10 to 25	New
	<i>Vision Statement & Goals</i>	<i>5</i>	<i>Retires 12/31/23</i>
	<i>Indicators & Targets</i>	<i>10</i>	<i>Retires 12/31/23</i>
	<i>Action Plans</i>	<i>10</i>	<i>Retires 12/31/23</i>

Stay up to date by visiting the Program Updates page: sustainablejersey.com/actions/program-updates

Participants Map Search

Use the [Participating Municipalities & Approved Actions](https://sustainablejersey.com/certification/search-participating-municipalities-approved-actions) (*sustainablejersey.com/certification/search-participating-municipalities-approved-actions*) page to find examples of documentation from certified towns and connect with municipal green teams

Search by action

By Certified Action

Animals in the Community

- Animals in the Community Education
- Companion Animal Management Pledge
- Companion Animal Management Plan
- Enhanced Licensing Compliance
- Pledge Supporting NJ Wildlife Action Plan
- Wildlife Interaction Plan

View certified towns approved for that action

MUNICIPALITY	COUNTY	CERTIFICATION
Bernardsville Boro	Somerset	BRONZE
Cape May City	Cape May	SILVER
Chesterfield Twp	Burlington	BRONZE
East Brunswick Twp	Middlesex	SILVER
Hillsborough Twp	Somerset	SILVER
Oradell Boro	Bergen	SILVER
Princeton	Mercer	SILVER
Readington Twp	Hunterdon	SILVER
Sea Bright Boro	Monmouth	BRONZE

View certification report for example documentation

Chesterfield Twp
Certification Level: Bronze
Certified On: October 18, 2021
Total Points: 155
Certification Report: [View Report](#)
Applicant Profile: [View Profile](#)

Sustainable Jersey Sessions - New Jersey League of Municipalities

GET BETTER BUY-IN WITH EQUITABLE COMMUNITY ENGAGEMENT STRATEGIES

Tuesday, 11/14, 2:00pm – 3:15pm, Room 420

COMMUNITY ENERGY PLANNING: LESSONS LEARNED & LOOKING AHEAD

Tuesday, 11/14, 3:45pm – 5:00pm, Room 421

SUSTAINABLE JERSEY PROGRAM UPDATE

Wednesday, 11/15, 9:00am – 10:15am, Room 420

WHAT'S NEW IN ENERGY EFFICIENCY OUTREACH CAMPAIGNS

Wednesday, 11/15, 10:45am – 12:00pm, Room 421

INVESTING IN ACTIVE TRANSPORTATION: TEST IDEAS, FIND FUNDING

Wednesday, 11/15, 2:00pm – 3:15pm, Room 420

THINK OUTSIDE THE BIN: NON-MANDATED RECYCLING INITIATIVES

Wednesday, 11/15, 2:00pm – 3:15pm, Room 421

POWER SURGE: SPARKING SUCCESS FOR ELECTRIC VEHICLES

Wednesday, 11/15, 3:45pm – 5:00pm, Room 421

PLANNING FOR LOCAL RESPONSES TO CLIMATE CHANGE

Thursday, 11/16 9:00am – 10:15am, Room 420

TREE STEWARDSHIP IMPROVES COMMUNITY RESILIENCE

Thursday, 11/16 10:45am – 12:00pm, Room 421

STORMWATER MANAGEMENT: MAP, MONITOR AND MAINTAIN

Thursday, 11/16 2:00pm – 3:15pm, Room 420

Presentations will be posted on our website: [Resources/Presentations/NJLM Conference by 12/1](#)

Sustainable Jersey Technical Assistance

COMPLETE STREETS TECHNICAL ASSISTANCE

Municipalities within the NJTPA region are eligible to apply to receive free technical services to advance a complete street initiative. Register for this webinar on **December 5 from noon to 1:00pm** to learn how 24 New Jersey communities have used this program to address their local issues and how to identify and apply for a project in your community.



LEARN MORE

For more information and to apply for technical assistance visit:

<https://bit.ly/SJgrants>

SUSTAINABLE JERSEY ENERGY TECHNICAL ASSISTANCE

- **Energy Technical Assistance includes:**
 - Identify and apply for NJCEP and/or utility incentives for facility upgrades
- Establish energy tracking system for facility energy use

Energy TA funded by:

- NJ Board of Public Utilities
- Investor-owned utilities:
 - Elizabethtown Gas
 - New Jersey Natural Gas
 - PSE&G
 - South Jersey Gas

We are here to support you!



- Visit us at Booth 103
- Check out our website
- Schedule a consultation with staff





Thank You!

- Stay updated on grants, technical assistance, events and program updates by joining our mailing list
- Questions? Visit our website sustainablejersey.com or contact us at info@sustainablejersey.com or 609-771-2938



Scan QR Code to
sign up for our
mailing list

Sustainable Jersey Underwriters and Sponsors

Program Underwriters



Corporate Sponsors

